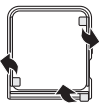
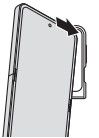


A



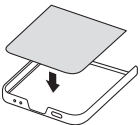
B



C



D

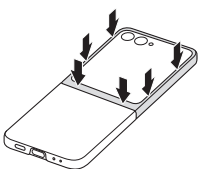


E

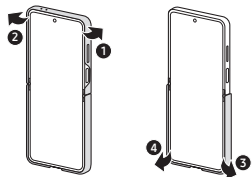


Printed in Korea  
A01318 Rev.1.0  
GLOBAL Type 04/2024

F



G



English

Copyright © 2024 Samsung Electronics Co., Ltd.  
Copyright © 2024 Samsung Electronics America, Inc.  
Samsung and Samsung Galaxy are trademarks of Samsung Electronics Co., Ltd. Other company names and marks are the property of their respective owners.

- Remove foreign materials, such as dust and oils, from the mobile device before attaching the product. If you do not, the product may not stay attached properly.
- Remove the release paper from the non-slip pad of the product's inside. (A)
- Attach the upper right corner of the top part of the product first. (B)
- Remove the release paper from the supplied card. (C)
- Attach the supplied card in the bottom part of the product. Install it with the patterned side facing out. (D)
- Attach the lower right corner of the bottom part of the product first. (E)
- If the product becomes crooked after it is attached, detach it and then attach it again.
- Keep pressing down on the product with sufficient power to attach it firmly. The non-slip pad's adhesive force becomes stronger over time. It is recommended to avoid using the mobile device for some time to let the non-slip pad stick tightly to the mobile device. (F)

- Remove the corners of the top and bottom parts first to detach the product. (G)
- When the product is attached to your mobile device, the Wireless power sharing feature and Wireless charging may not work properly. It is recommended to remove the product before using these features.
- Detach the product to use the OTG (On-The-Go) adapter.
- Depending on the card installed in the product, you can check the different cover screens on your mobile device. After attaching the product, open Settings and tap Cover screen on your mobile device to change the settings of the cover screen.
- The cover screen features will operate after NFC authentication.
- NFC authentication may not work when mobile device management (MDM) policies are applied or when the product is on metal materials.
- The LED feature of the supplied card uses the mobile device's battery. You can turn this feature on or off in Settings on your mobile device.
- Your product contains magnets. Keep it away from credit cards, implanted medical devices, and other devices that may be affected by magnets. In the case of medical devices, keep your product more than 15 cm apart. Stop using your product if you suspect any interference with your medical device and consult your physician or your medical device manufacturer.
- Visit [www.samsung.com](http://www.samsung.com) to access the product information. This content may not be available depending on the region.
- Your consumer rights are governed by the law of the country in which you purchased the product. Please contact your service provider for more information.

#### Cautions

Use caution to avoid damaging this product.

- Do not expose the product to humidity, solvents or high temperatures. Doing so may stain, wrinkle, discolour or distort it.
- If there is debris on the product's attachment surface, wipe the surface clean before using the product.
- Avoid placing the product in hot or humid environments. If the product is exposed to direct sunlight, its colour or form may change.
- Be careful not to scratch the product with sharp objects such as nails.
- When using this product, some customers may experience allergic reactions, such as itching, eczema, or swelling. If you experience any of these symptoms, stop using the product and consult a physician.

#### Correct disposal



This marking on the product, accessories or literature and without the bar on batteries indicates that the product, battery and its electronic accessories (such as charger, headset, USB cable) should not be disposed of with other household waste.  
Samsung, PO Box 12987, Dublin. IE or Yateley, GU46 6GG. UK

#### Correct disposal (India Only)



This marking on the product, accessories or literature indicates that the product and its electronic accessories (such as charger, headset, and USB cable) should not be disposed of with other household waste at the end of their working life. To prevent possible harm to the environment or the human health from uncontrolled waste disposal, please separate these items from other types of waste and recycle them responsibly to promote the sustainable reuse of material resources.  
For more information on safe disposal and recycling visit our website. [www.samsung.com/in/support](http://www.samsung.com/in/support) or contact our Helpline numbers-  
1800 40 SAMSUNG (1800 40 7267864)  
1800 5 SAMSUNG (1800 5 7267864)  
This product is India RoHS compliant.

### Acknowledging Special Precautions and FCC/ Industry Canada Notice

#### Cautions

Any changes or modifications to your device not expressly approved by Samsung could void your warranty for this equipment, and void your authority to operate this equipment. Only use approved batteries, antennas, and chargers. The use of any unauthorized accessories may be dangerous and void the phone warranty if said accessories cause damage or a defect to the phone.

Although your phone is quite sturdy, it is a complex piece of equipment and can be broken. Avoid dropping, hitting, bending, or sitting on it.

#### Information to User

This equipment has been tested and found to comply with the limits of a Class B digital device. These limits are designed to provide reasonable protection against harmful interference in a residential installation. This equipment generates, uses, and can radiate radio frequency energy and, if not installed and used in accordance with the instructions, may cause harmful interference to radio communications. However, there is no guarantee that interference will not occur in a particular installation; if this equipment does cause harmful interference to radio or television reception, which can be determined by turning the equipment off and on, the user is encouraged to try to correct the interference by one or more of the following measures:

- Reorient/relocate the receiving antenna.
- Increase the separation between the equipment and receiver.
- Connect the equipment into an outlet on a circuit different from that to which the receiver is connected.
- Consult the dealer or an experienced radio/TV technician for help.

#### FCC/ IC Notice

This device complies with FCC & Industry Canada licence exempt RSS standard(s). Operation is subject to the following two conditions: (1) This device may not cause interference. (2) This device must accept any interference, including interference that may cause undesired operation of the device.