





Size:60.8\*95mm,PVC材质, 覆亚膜, 可移动贴纸, 撕下不能留有胶印, 彩色印刷, 刀模线不印刷

**WARNING!**

**Risk of Fire - No User Serviceable Parts.**

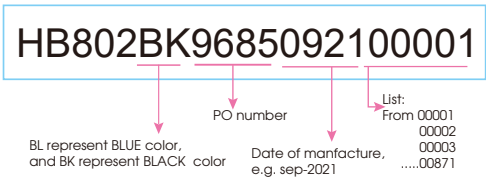


**To reduce the risk of injury, user must read instruction manual.**

- Always wear proper protective equivalent, such as helmets. Helmets should fit properly with the chin strap in place, so that it provides protection for your entire head.
- Do not ride vehicle after consuming drugs or alcohol.
- Do not ride without proper training and guidance.
- Accelerate gradually. Never lunge or tilt forward suddenly during operation.
- Avoid obstacles and slippery surfaces that could result in a loss of balance or traction and cause a fall.
- Do not attempt to accelerate when you hear the beep warning for speeding.
- Do not start on rocky, slippery, sandy, gravelly, sloped or wet surfaces.
- Do not carry passengers. Do not perform stunts, tricks, or turn sharply.
- Riders should be at least 15 years old and 5 feet tall.
- Maximum weight load is 220 lbs (100kg).
- Maximum speed of the hoverboard is up to 11.3km/h (7mph).
- You must comply with all applicable local, state, and federal laws when operating this device.
- Do not leave unattended while charging. Do not charge for more than 6 hours. Allow to cool before charging.
- Use only the supplied battery pack with this hoverboard. (36V, 4.0Ah).
- Use only with specified charger as shown in instruction manual.

**FAILURE TO FOLLOW THE ABOVE INSTRUCTIONS AND OTHER MISUSE CAN RESULT IN DEATH OR SERIOUS INJURY OR DAMAGE TO THE PRODUCT. USE AT YOUR OWN RISK.**


黑色款  
材质：不干胶贴纸。黑白印刷, 过哑胶  
Size: 64x10mm, 一式两份  
准备多2%的备品, 即854+854\*2%=871




材质：不干胶贴纸, 彩色印刷, 过哑胶  
Size: 64 mm X 58 mm

**HB802-1**  
**VELOCITY**

Electronic Self Balancing Hoverboard  
Charger Input: AC 100-240V 50/60Hz 1.5A Max  
Charger Output: DC 42V 1A  
Built-in rechargeable battery: 36V 4.0Ah  
Max speed: 7 mph (11.3 km/h)  
Maximum load: 220 lbs. (100 kg)  
Minimum load: 44 lbs. (20 kg)

FCC ID: 2APO6OTTO802B  
Batch no: AA009685 0921

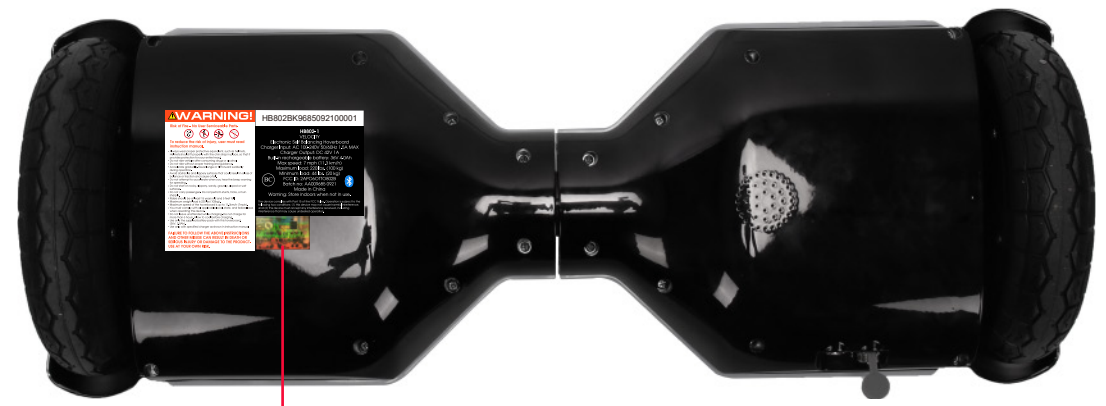


Made in China

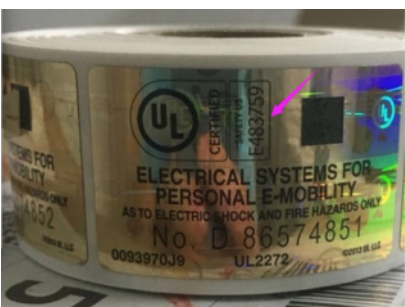
Warning: Store indoors when not in use.

The device complies with Part 15 of the FCC Rules. Operation is subject to the following two conditions: (1) this device may not cause harmful interference, and (2) this device must accept any interference received, including interference that may cause undesired operation.

BOTTOM SIDE



Size:45\*27mm  
OTTO UL标：E483759



Laser stickers