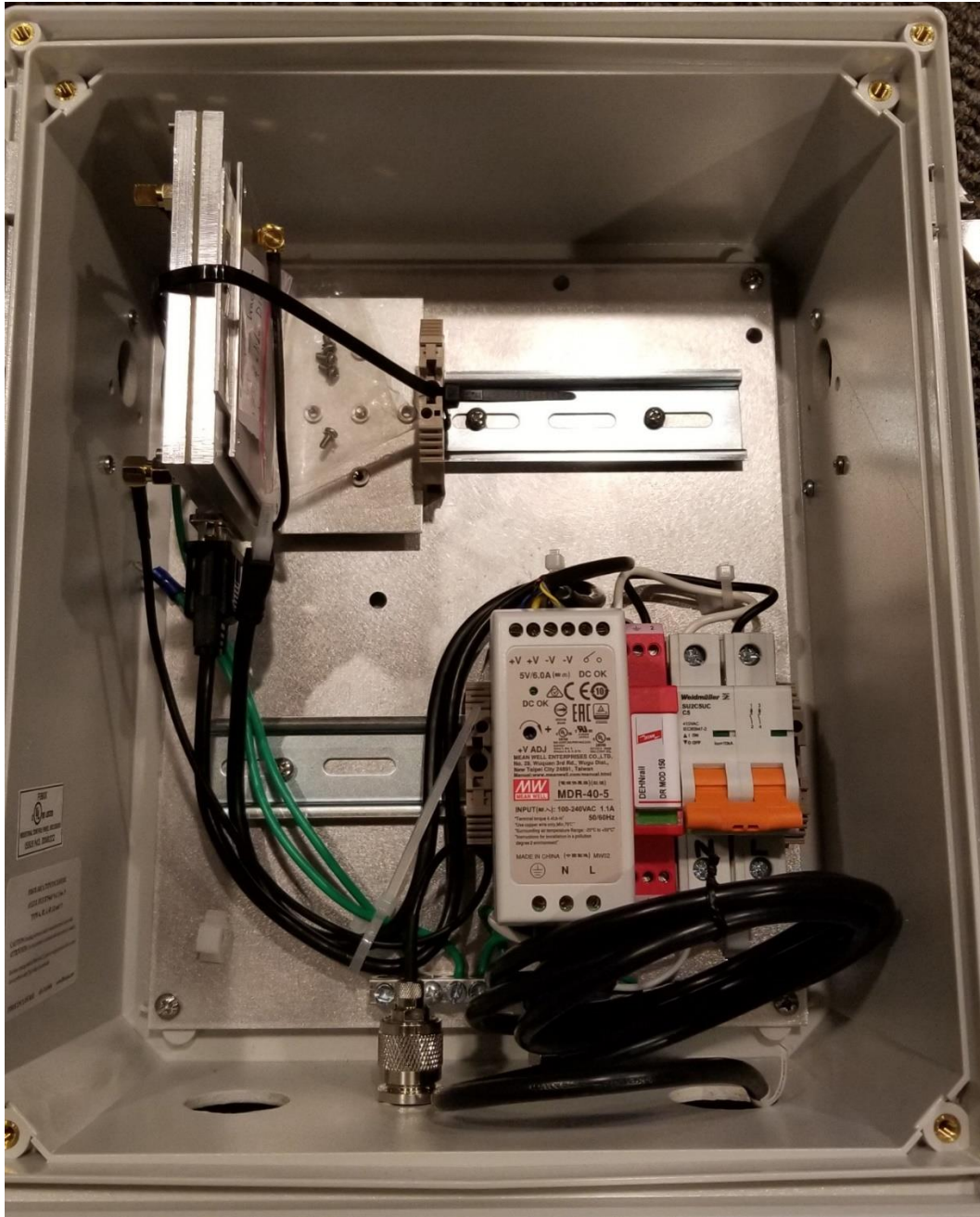


EUT enclosure with **900 MHz** Radio Card and Data Housing with **FCC Module** (lid open)

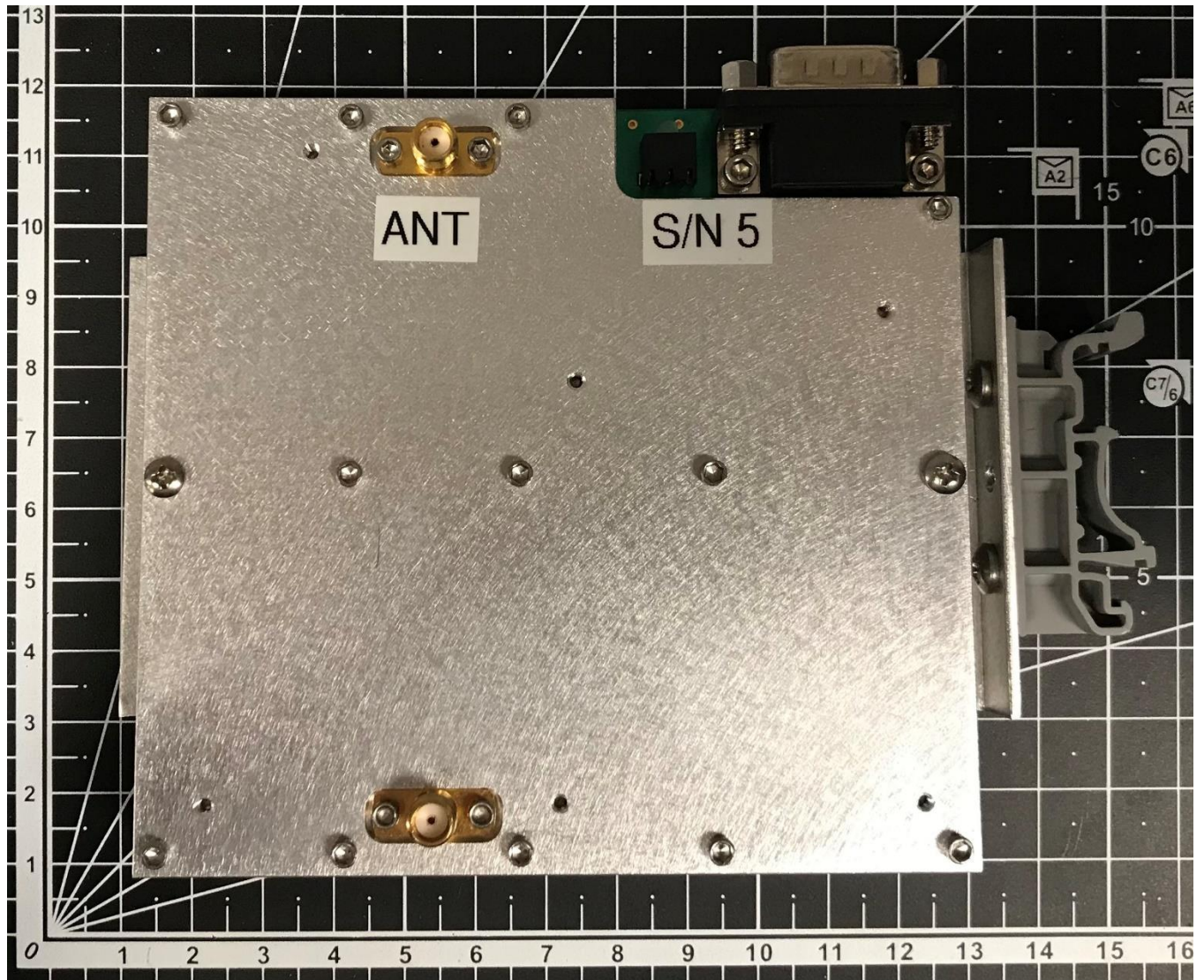


## EUT enclosure with only 900 MHz Radio Card





900 MHz Radio Card – Top View

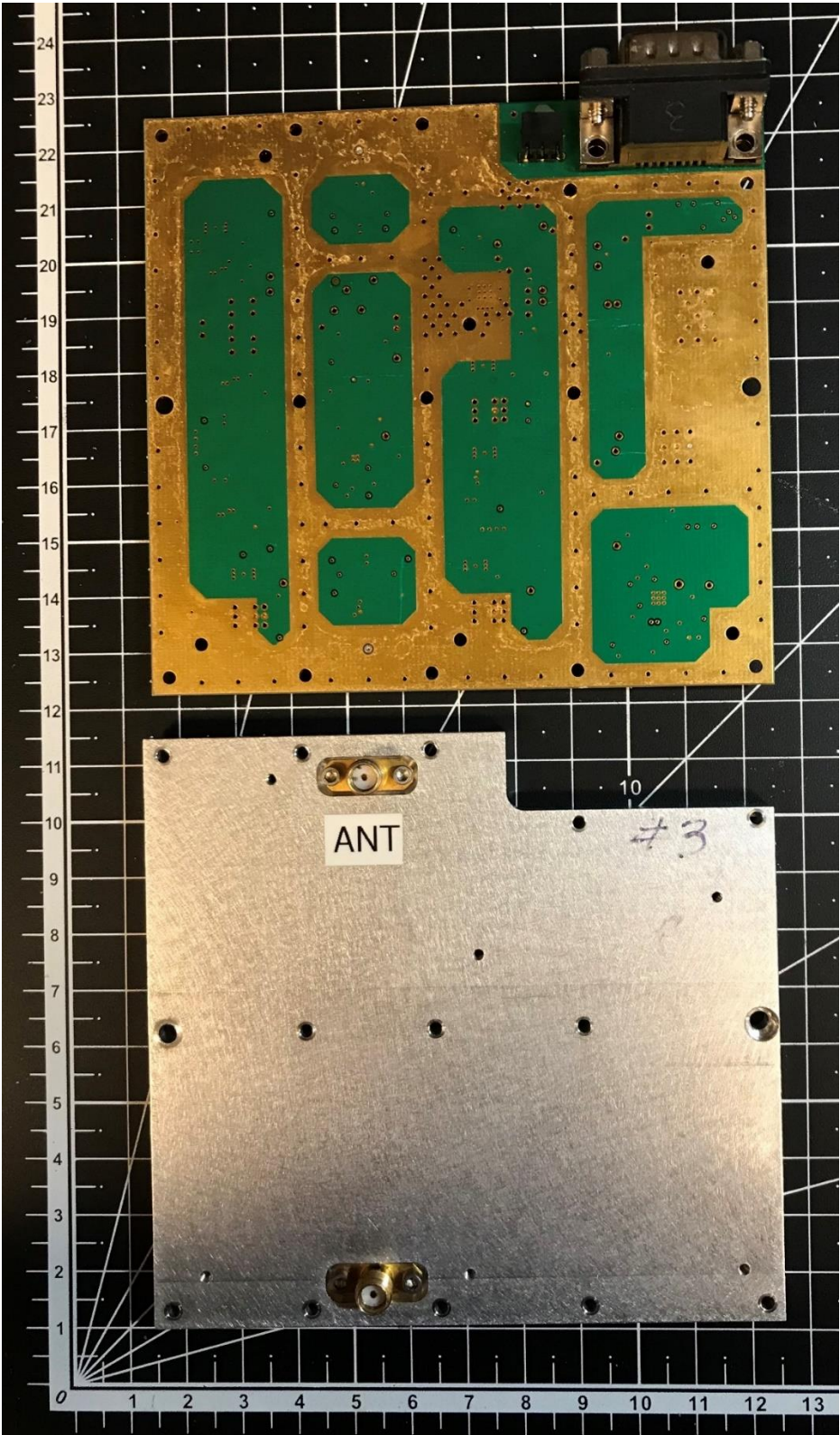


**900 MHz Radio Card – Bottom View**

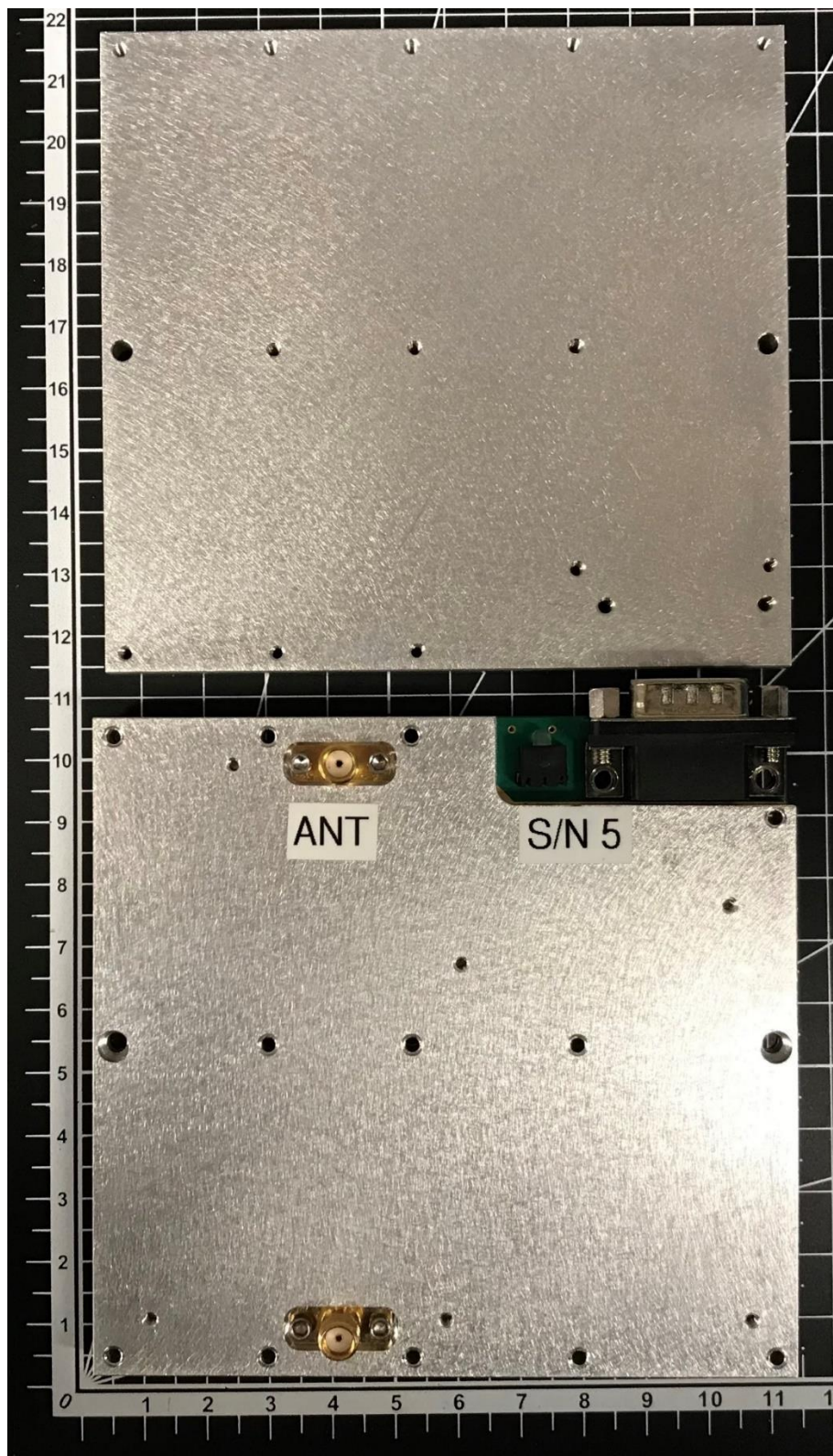




900 MHz Radio Card – Dust Cover Internal

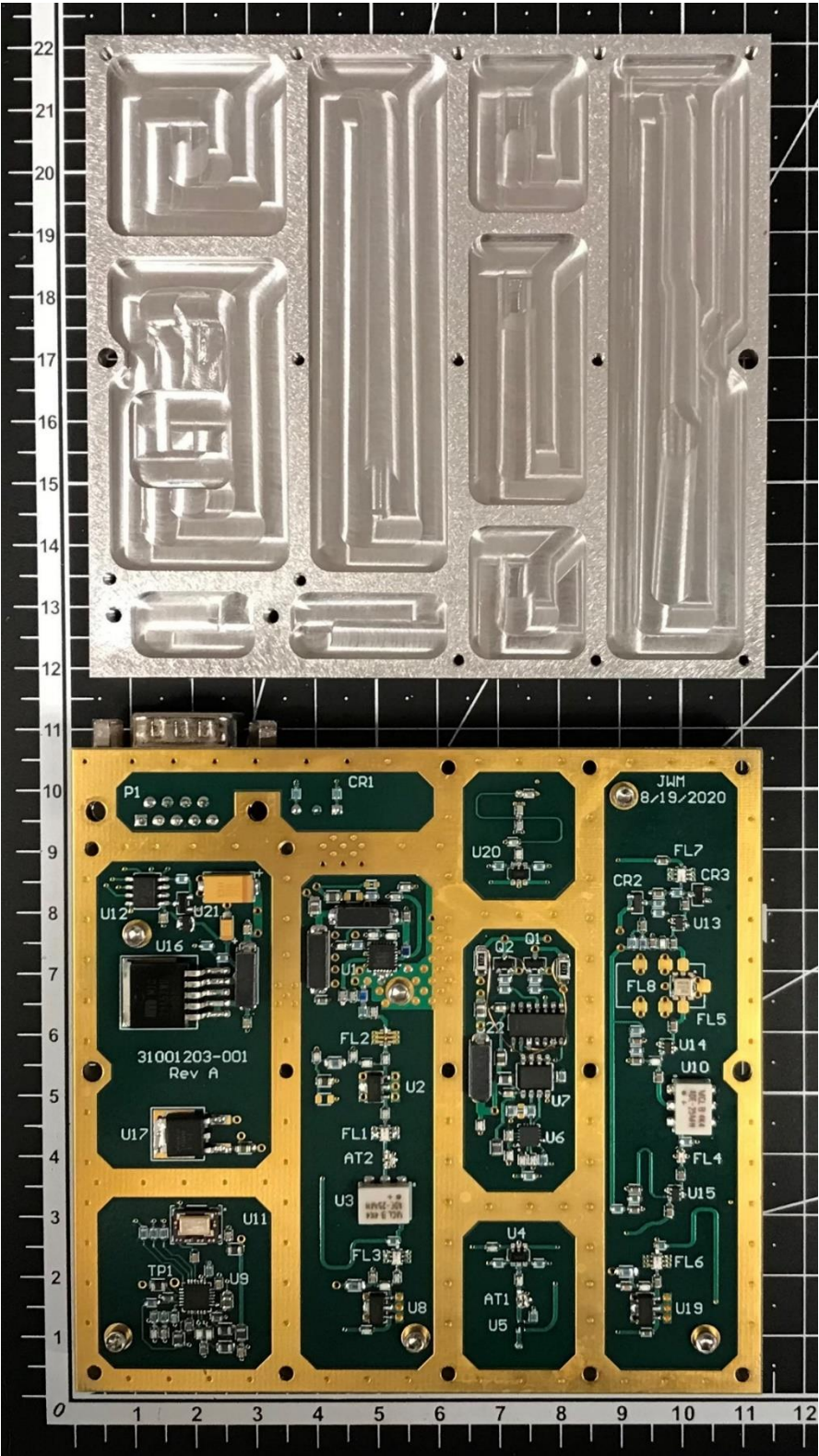


# 900 MHz Radio Card – Dust Cover External

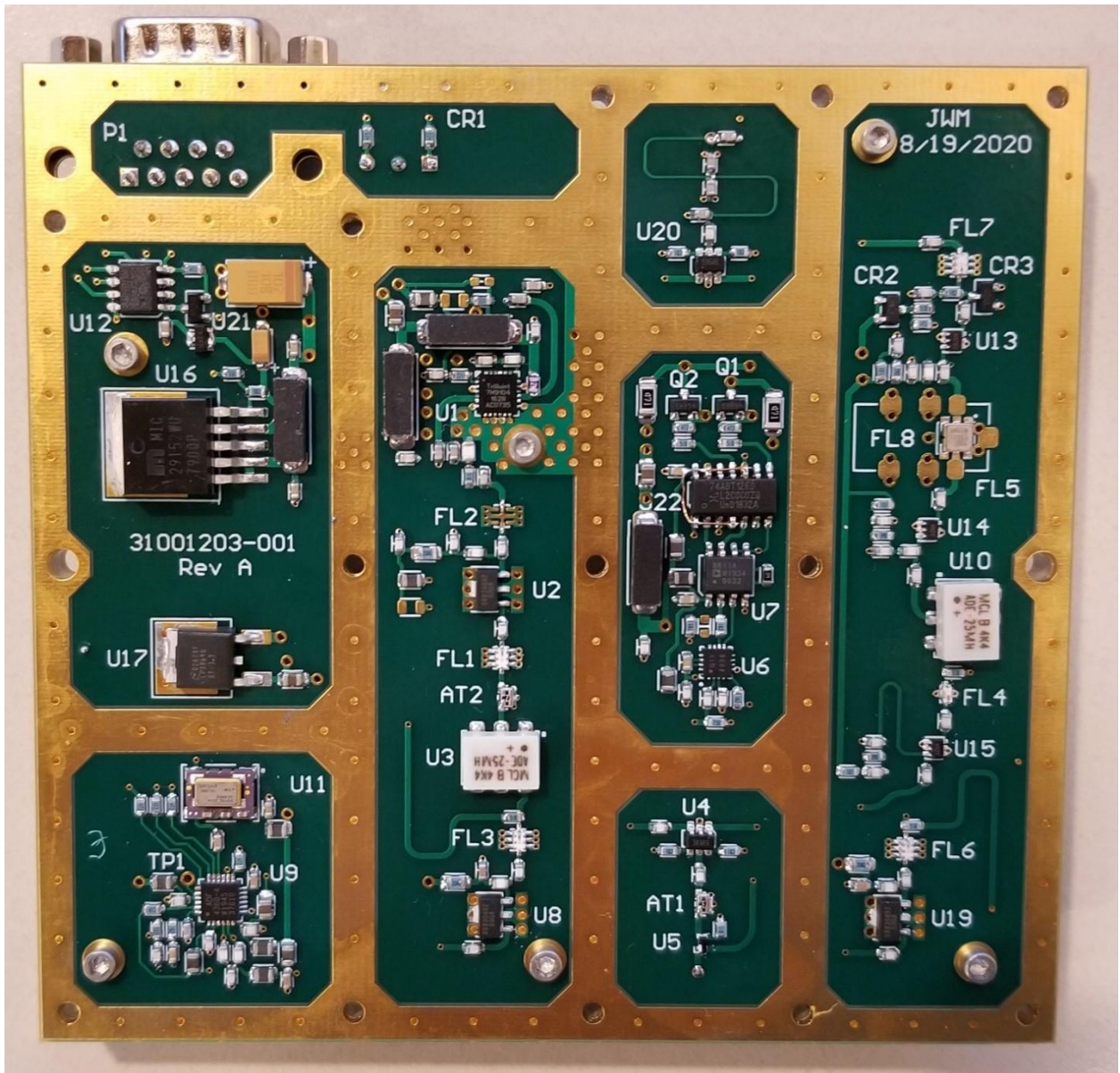




900 MHz Radio Card – Circuit View



900 MHz Radio Card – Circuit View, Close-up





**Data Housing –View 1 (FCC Module Inside)**

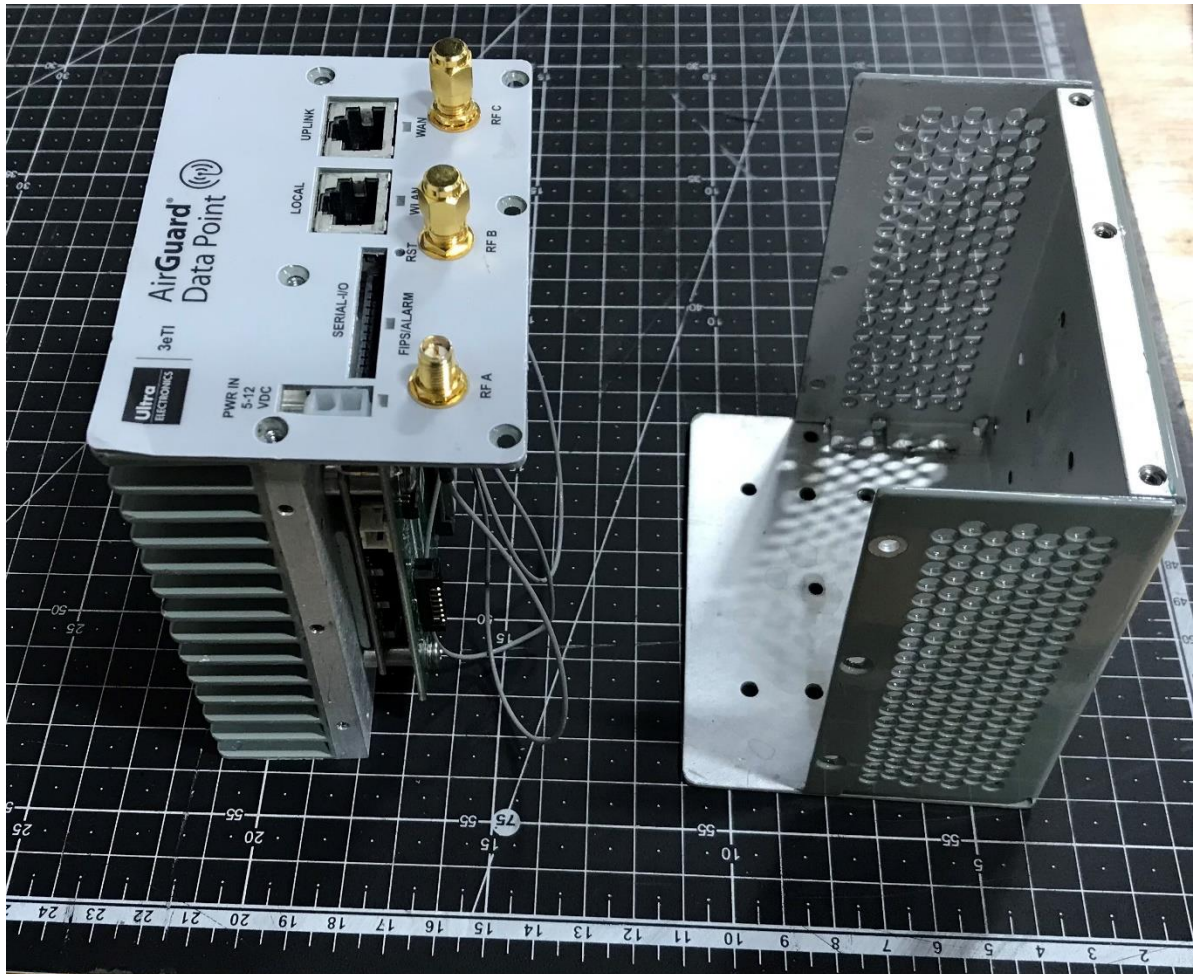


**Data Housing –View 2 (FCC Module Inside)**

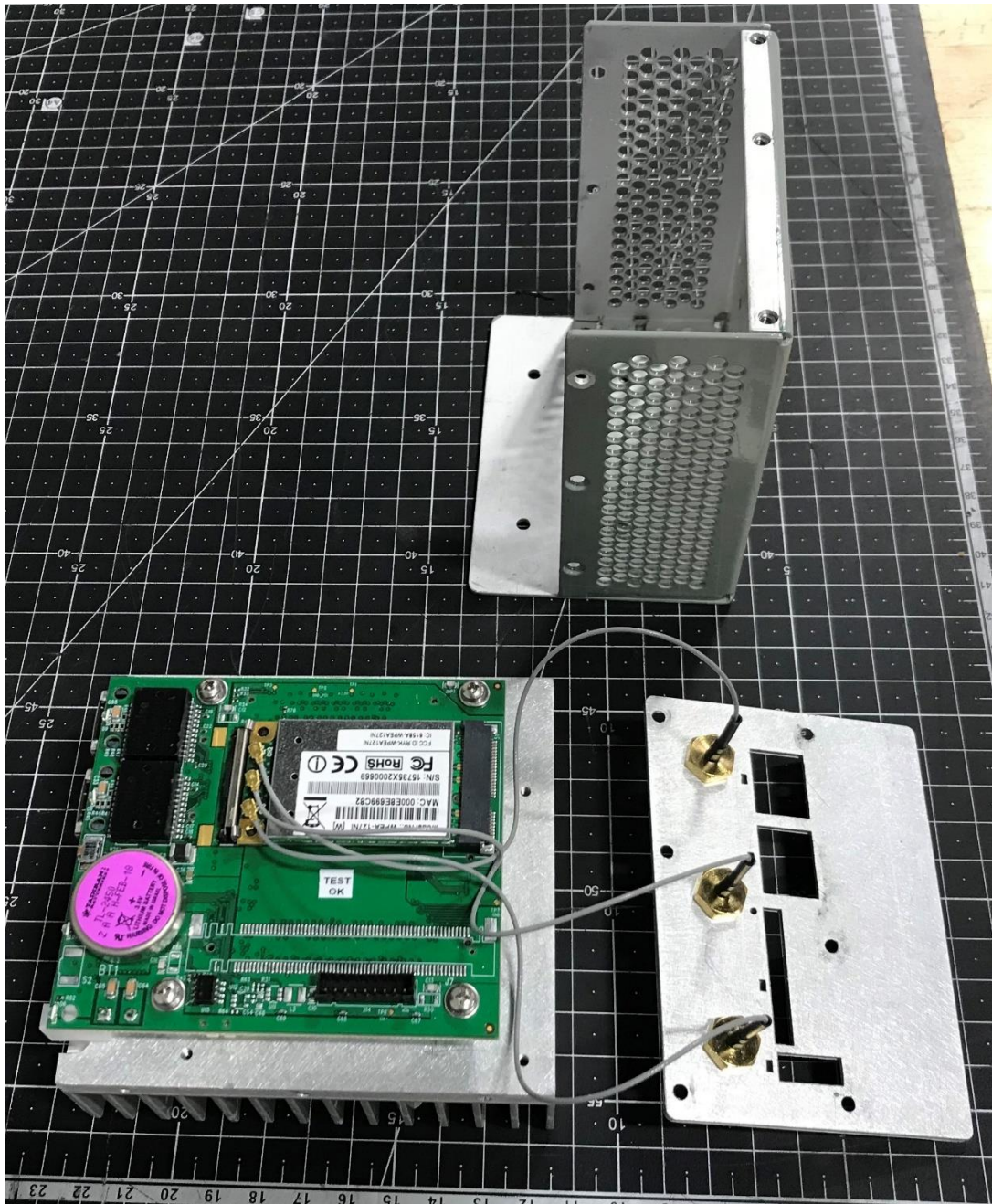




Data Housing Open – View 1

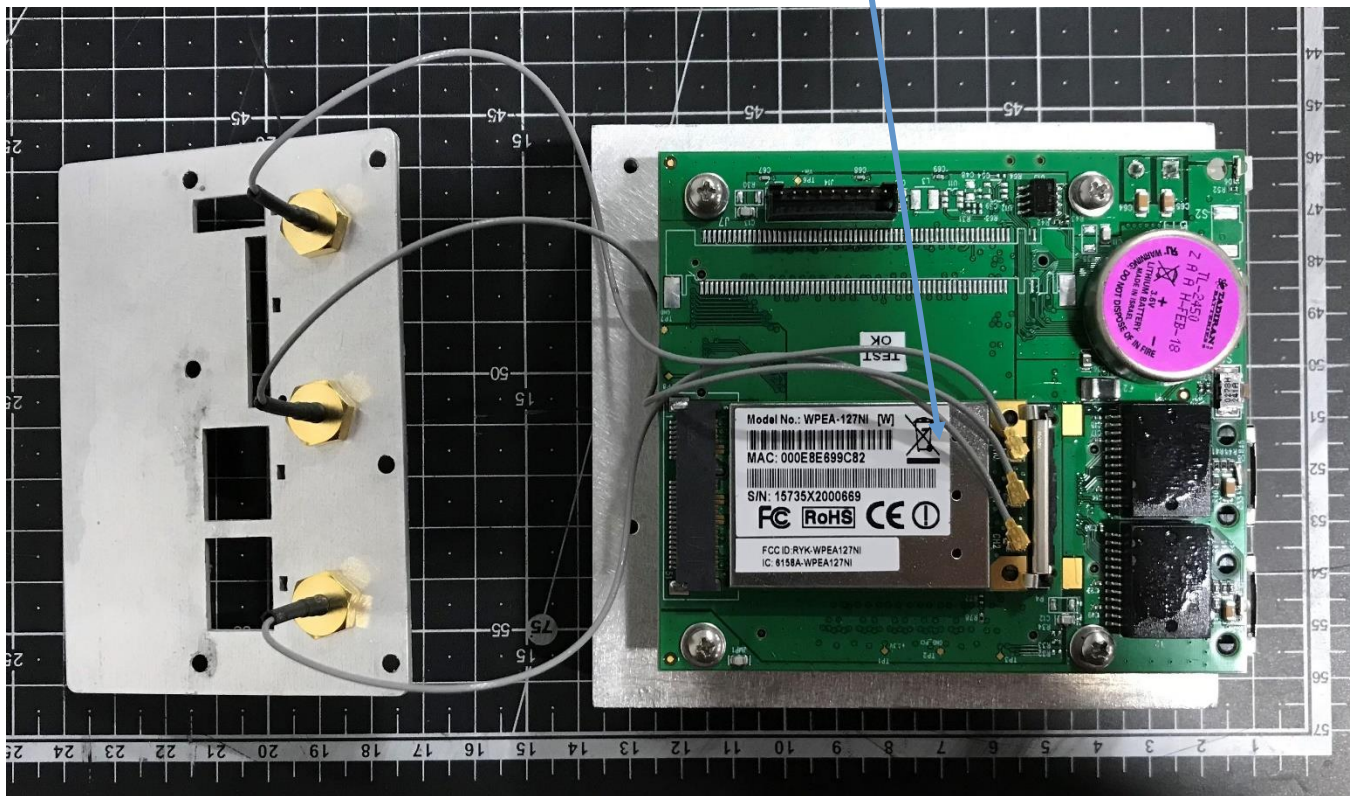


## Data Housing Open – View 2

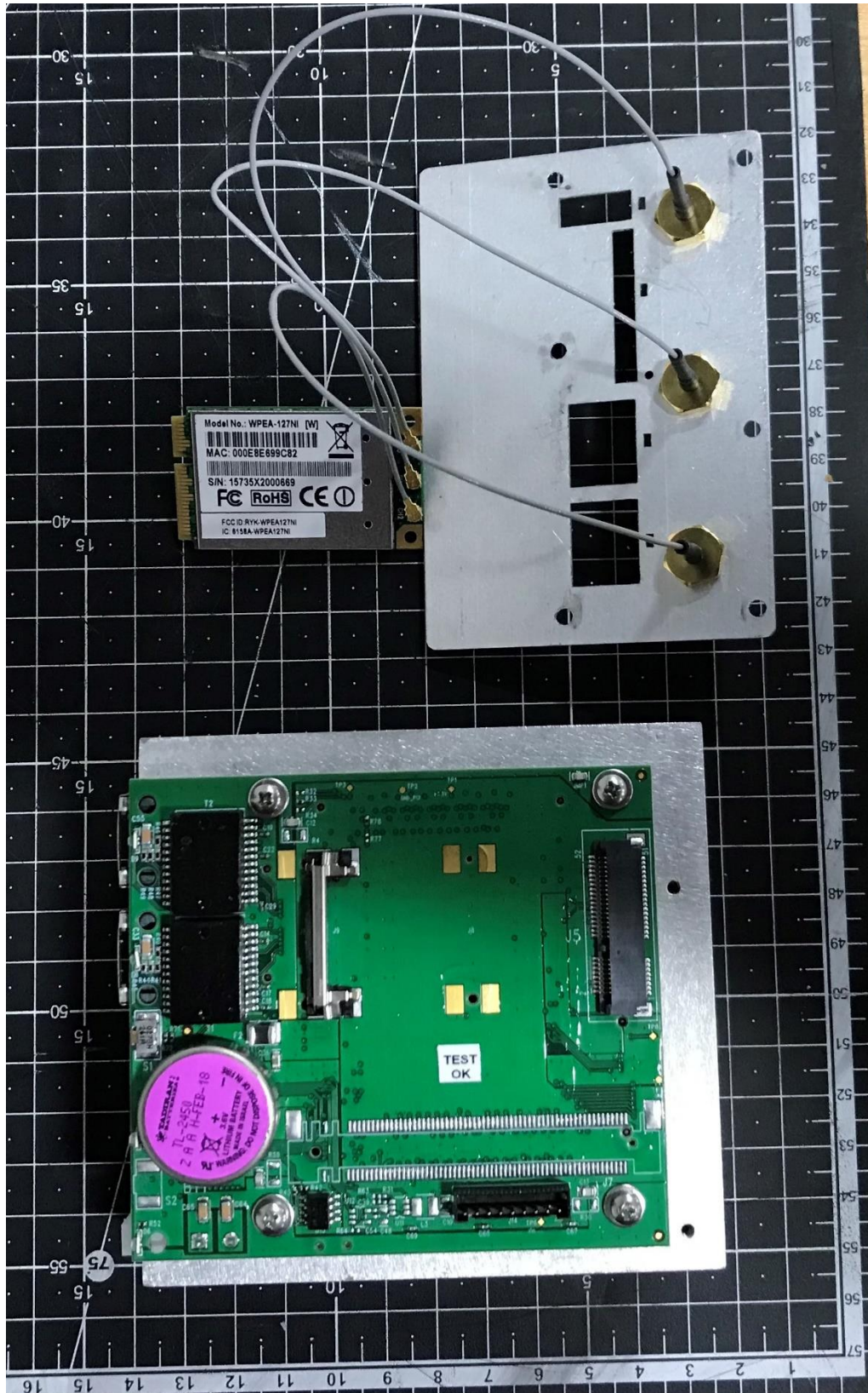




### Data Housing Open – View 3 (FCC Module)

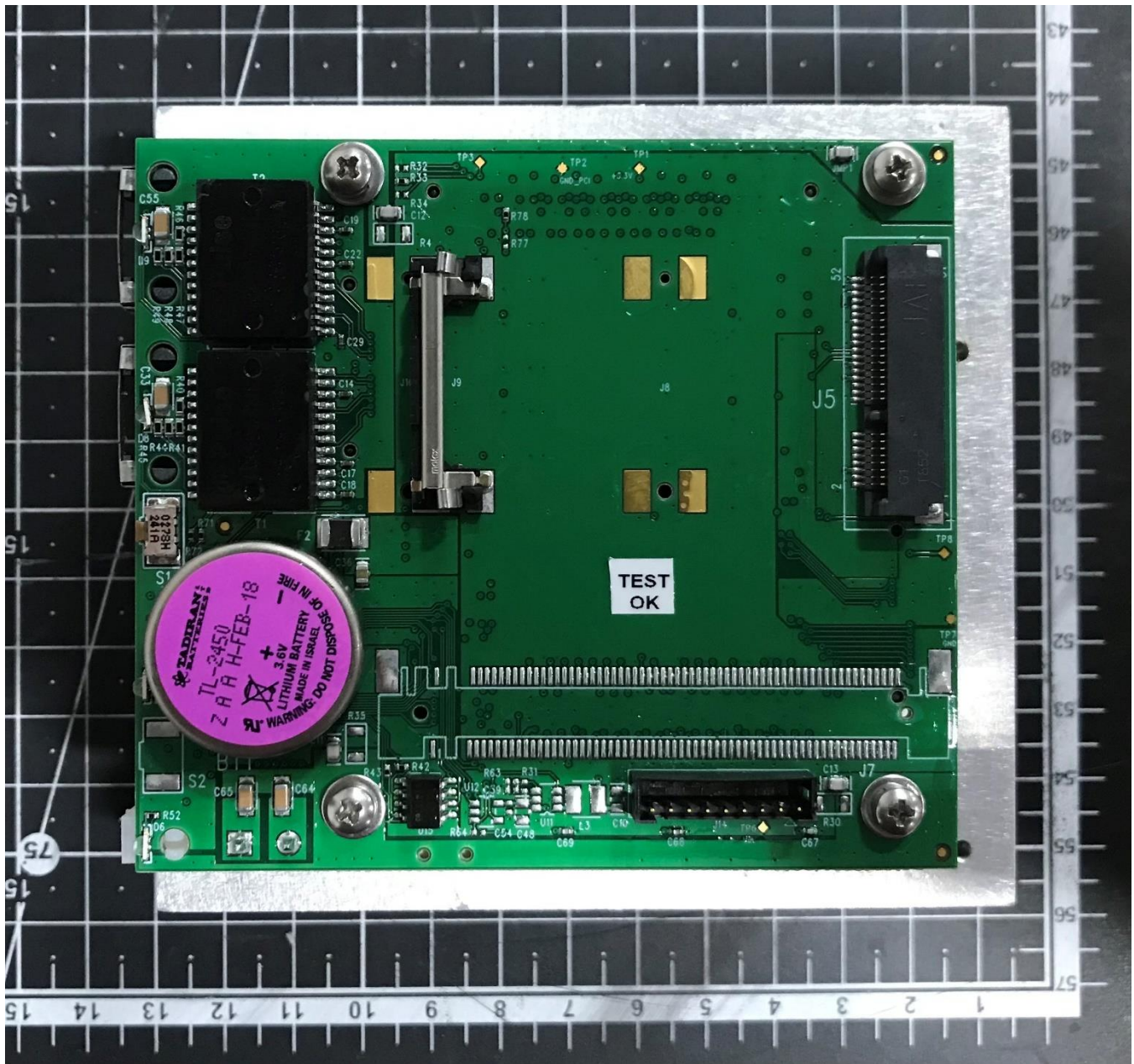


## Data Housing Open – View 4

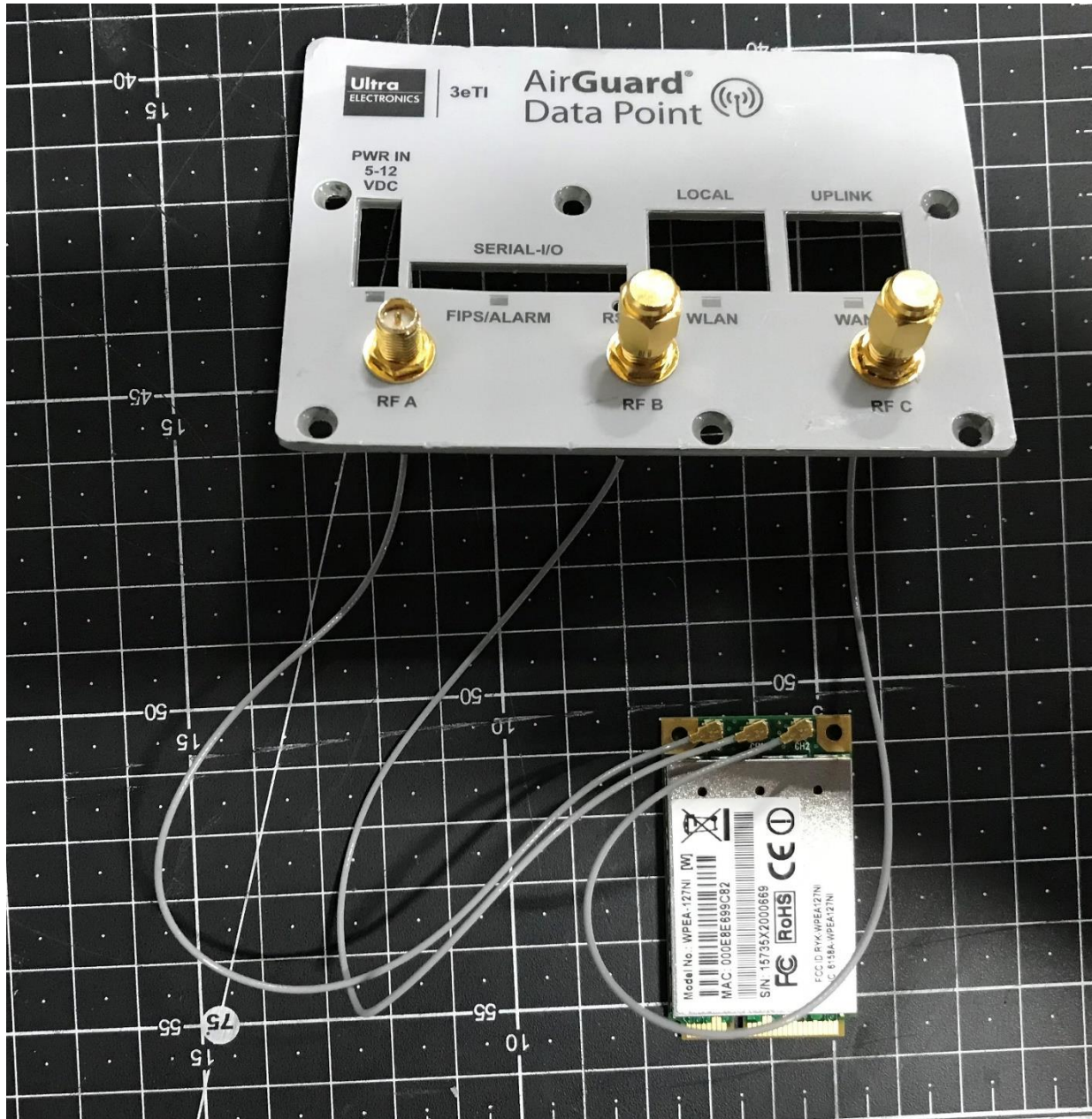




Data Housing Open – View 5 (FCC Module Removed)

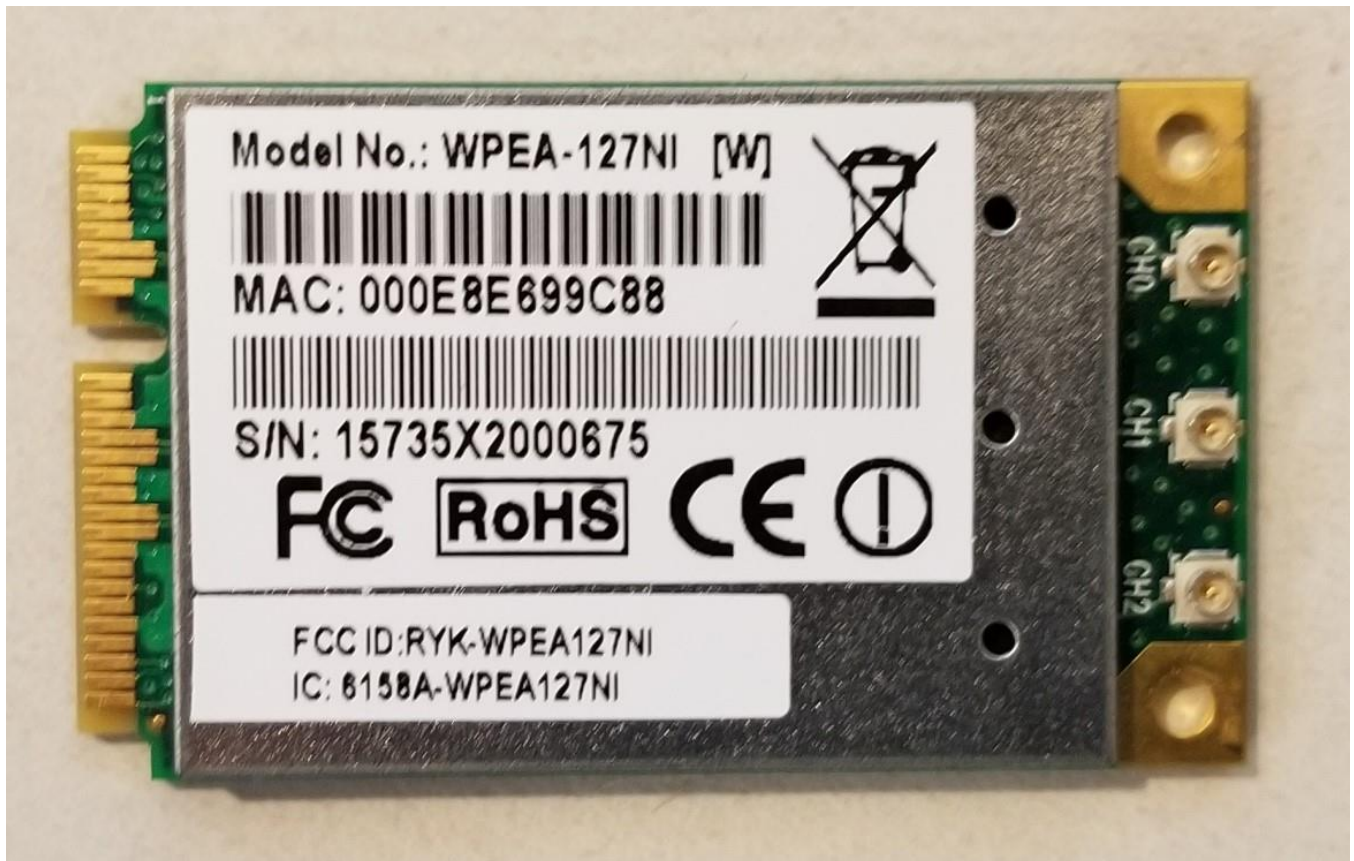


## Data Housing Face Plate with Attached FCC Module





**Certified FCC Module – Top View**



Certified FCC Module – Top View, Internal





**Certified FCC Module – Bottom View, Internal**

