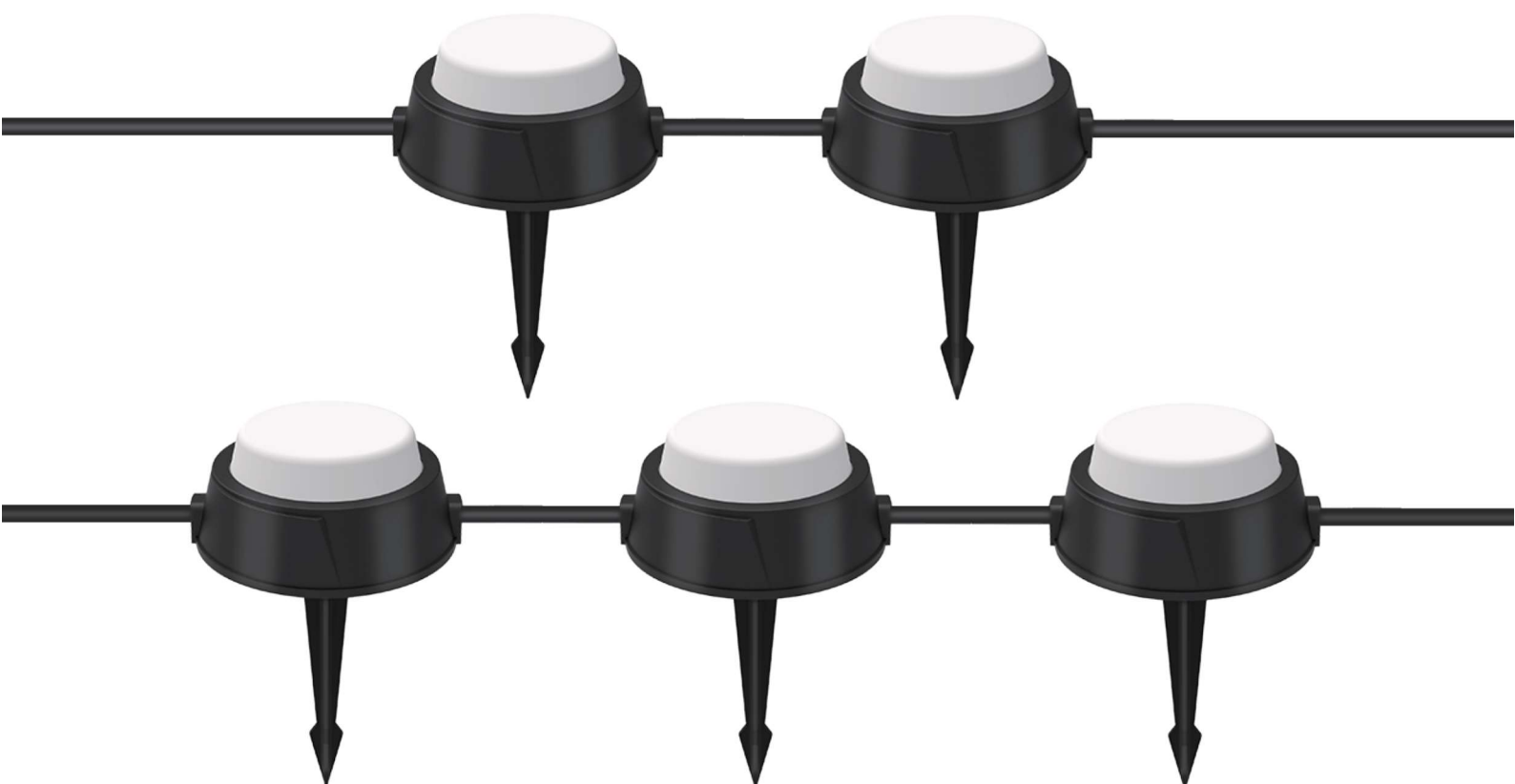


**Model:C6601-A**



Download Free APP:



Smart Life



Download on the  
App Store



GET IT ON  
Google Play



Thank you for choosing the C6601-A. In order to optimize the user experience, please read this manual carefully before operation, and keep this manual properly for future use.

## **Warning:**

1. This product is not a toy. To avoid fire, burns, personal injury or electric shock, please install out of the reach of children.
2. In order to ensure the normal operation of the lamp, please use the voltage indicated on the package.
3. Please do not modify the lamps during the warranty period.
4. Do not install near gas or electric heaters, fires, candles or any dangerous objects.
5. Before installation, please check whether the lamps and various parts are in good condition.
6. Be sure to cut off the power before installation.
7. Do not expose the lamp to corrosive conditions.
8. If the power cord is damaged, please cut off the power immediately and stop using it.

## **Technical Specification:**

Connection method: 2.4G Wifi&Bluetooth

Control method: APP/Voice/Button

Adapter input voltage:100-240VAC

Adapter output voltage: 24VDC/1A

Rated working voltage: DC24V

Rated power: 22W

Lamp color: RGBW

Color temperature: 2200K

Control method: TTL

Memory function: yes

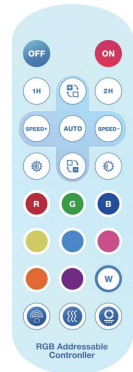
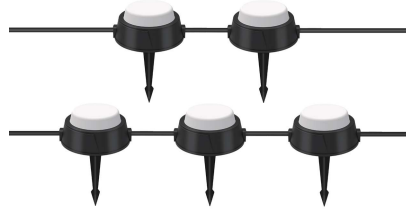
Working temperature: -20°C~+40°C

Protection class of lamps and  
controllers:IP67

Work with Amazon Alexa and Google  
Assistant.

## Packlist:


1. C015 controller
2. Light post(15 pixels)
3. RF remote control
4. Ground plug x 15
5. Waterproof power supply 24V/1A wall plug horizontal American standard UL (IP44)
6. Copy of the manual x 1



## Manual of Controller:



## Button Instruction:

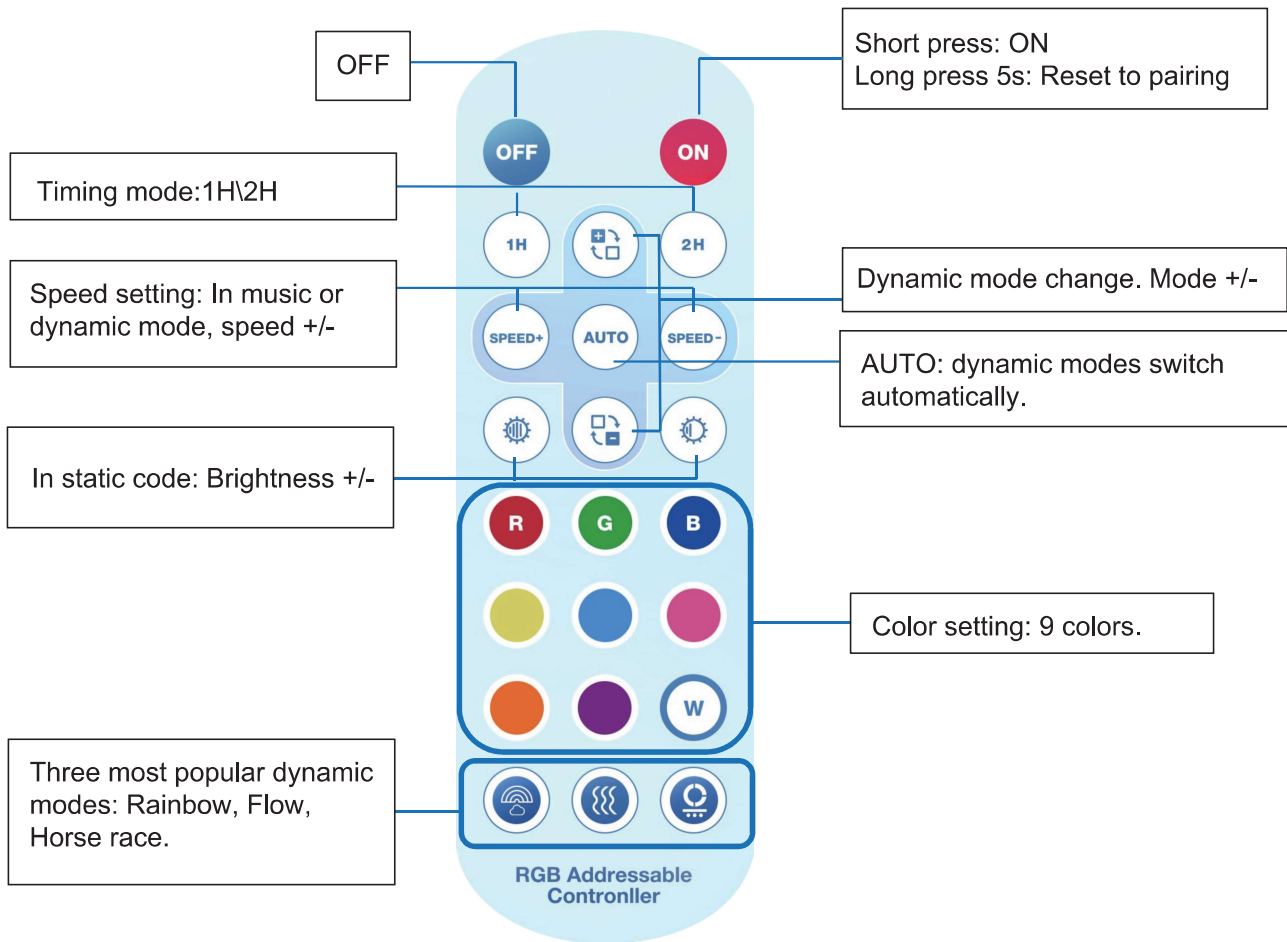
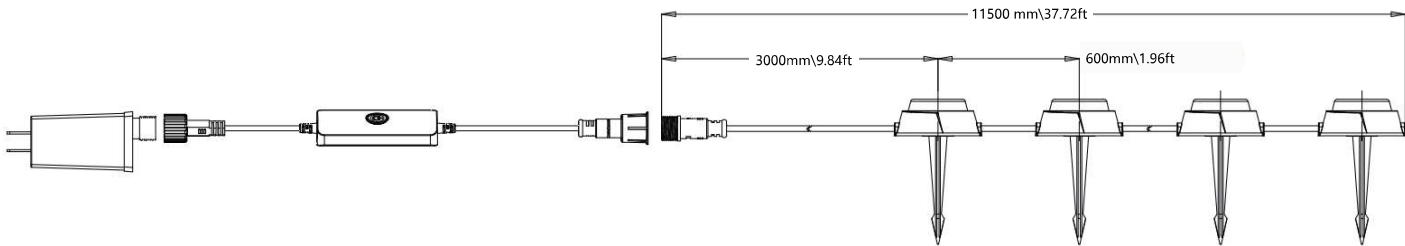
Switch : Short press is ON/OFF. When the device is on, long press in 5 seconds is reset to pairing mode. Light will blink in white.

## Technical parameter:

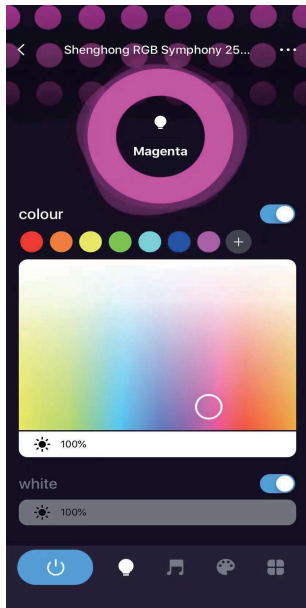
Working temperature: -20°C~+40°C

Size: 100mmx40mmx20mm (excluding wires)

Product wiring diagram:

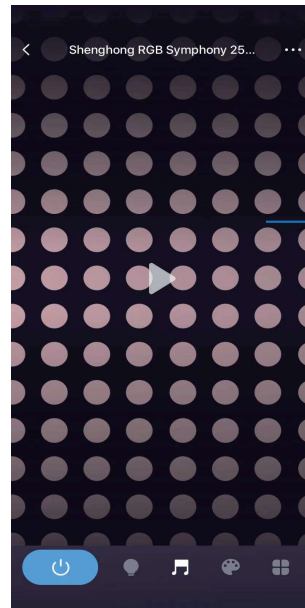


## APP Intelligent operation introduction:

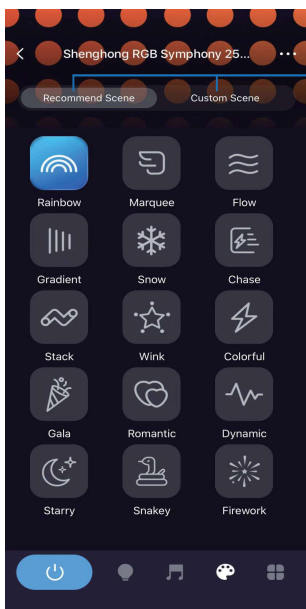


Color adjustment  
Tap + to add selected color, long press color dot to delete.

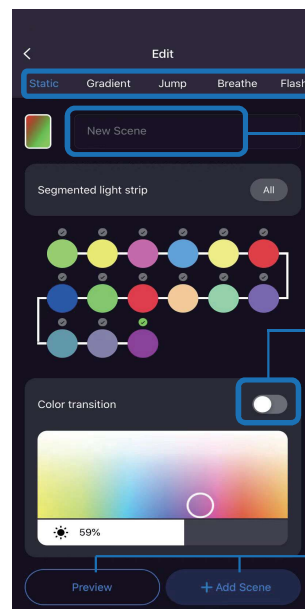
Warm white brightness adjustment



phone music mode:  
Switch freely according to your own mobile music



Dynamic mode  
Recommend scene included 15 popular modes.  
Custom Scene support DIY static color of each segment and dynamic modes.

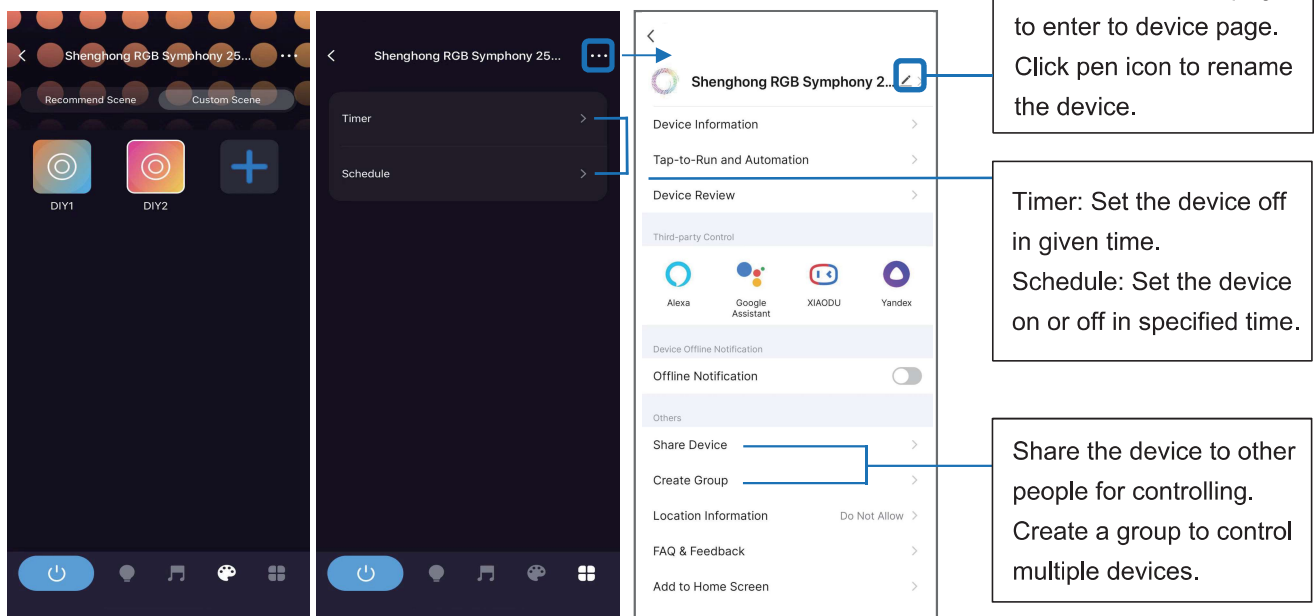


Supporting Static, Gradient, Jump, Breathe, Flashing Rainbow and Stream modes DIY.

Set name for DIY mode to reserve.

On is to open transition effect for segment.

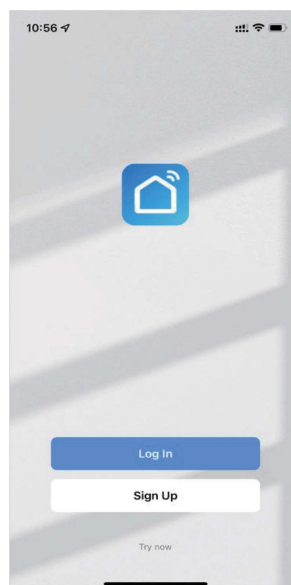
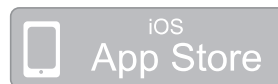
Preview to review the DIY mode.  
Add the scene to custom scene.



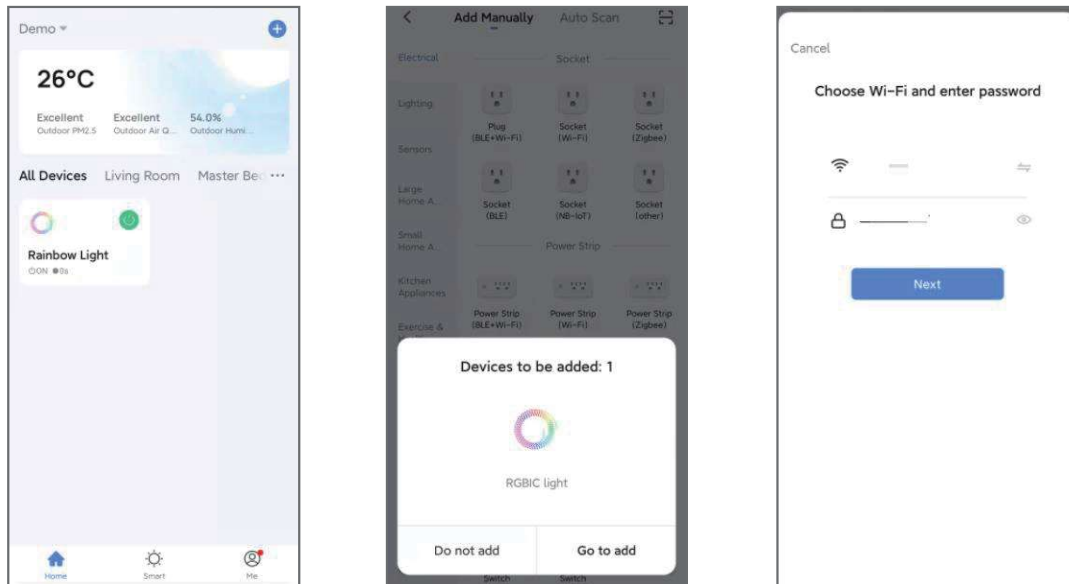
## Pairing Instruction:

APP Download. Search the **Smart Life** from Google Play or App Store. You can also scan the QR code from below.

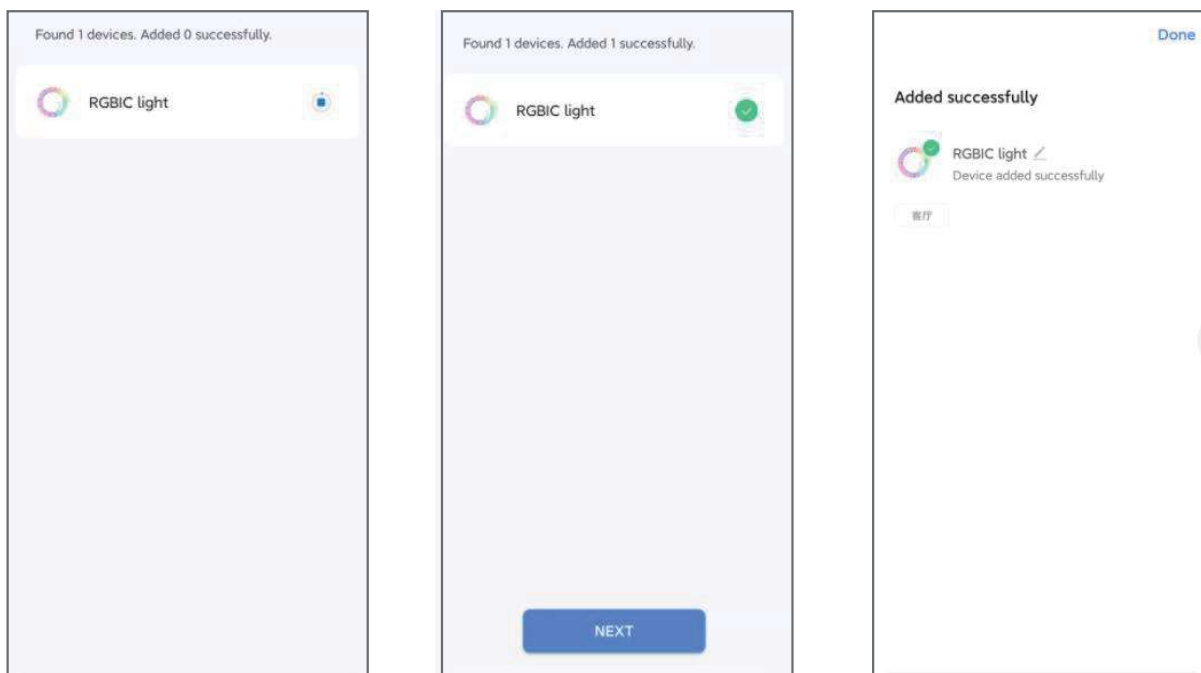
1. Download the APP and **Log In** with existing account or **Sign Up** the new account.



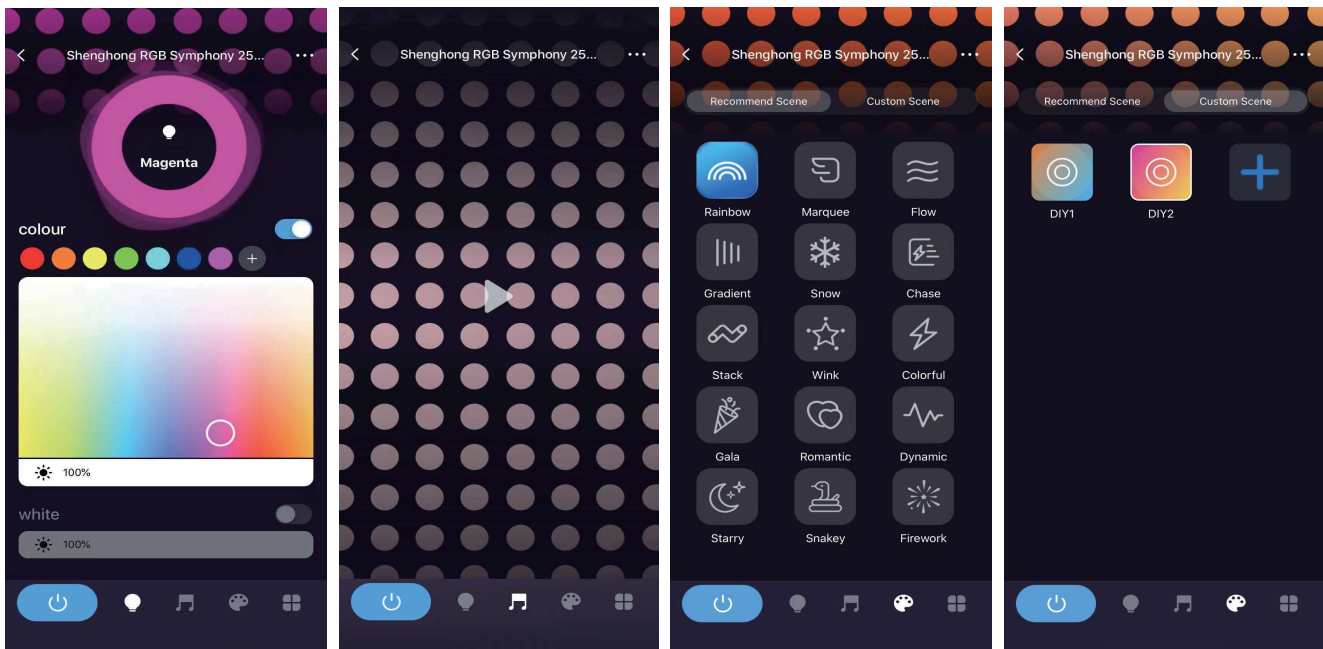
2. Power on the device, confirm the device is blinking rapidly in white. Turn on the Bluetooth and Wi-Fi of phone. Please make sure the phone is connecting the **2.4GHz** Wi-Fi router.
3. Tap **Add Device** or the plus icon (+) in the top-right corner on the **Home** page to go to the device adding page.



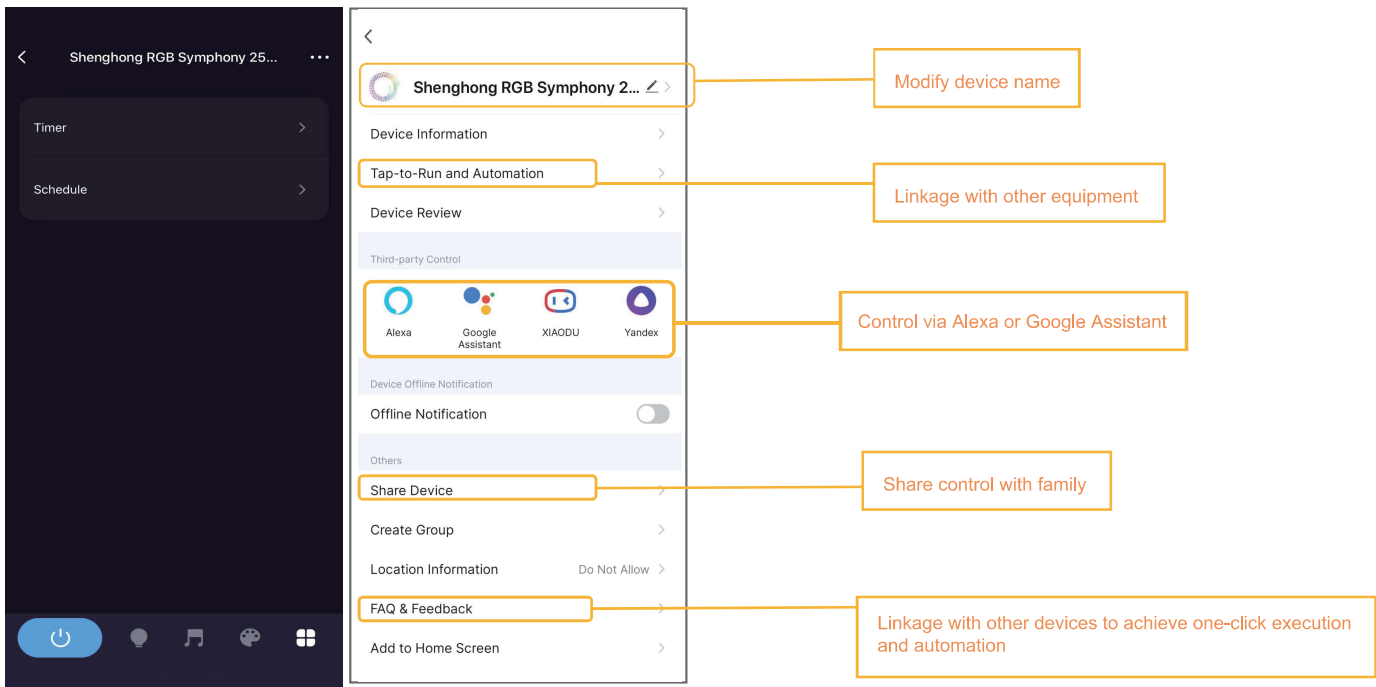
4. Enter the Wi-Fi password and click Next. Make sure the Wi-Fi is 2.4GHz not the 5GHz. Because the Wi-Fi chip is 2.4GHz. Wait about twenty seconds and the device will be added completely.



5.Then the device can be found in home page. Now you can play it with your imagination.



6.Click the edit icon in the upper right corner to show more gameplay.





## **Step for Bluetooth control:**

**Note:** The Bluetooth control is for the device that disconnected from router.

1. Open the Bluetooth and use the Bluetooth for pairing.
2. Make sure the router is power off and close the phone Wi-Fi. Keep the 4G/5G internet and Bluetooth open. Wait about 3-5 mins.
3. After that, the device can be controlled by Bluetooth. Even though the 4G/5G network of phone is off.

## **Common problems and solutions**

1. Unable to connect to your Wi-Fi network.

Please make sure to enter the correct Wi-Fi password during use. Wi-Fi settings. Check your internet connection for problems. If the Wi-Fi signal is too weak, please reset your wireless router and try again.

2. The installer is not working properly.

(1) Then close all applications running in the background and reopen the Smart Life APP.

(2) Uninstall and reinstall the Smart Life app and repeat.

3. The smart light strip is not responding.

(1) Check whether the smart string light is turned off. If yes, turn them on and wait until the smart light strip reconnects to The wireless network works automatically.

(2) Check if there is any problem with your internet connection. If necessary, reset the wireless router and try again.

## **Guarantee:**

1. During the warranty period, we provide services including refunds or free replacement for those who use the device for its intended purpose.

2. This warranty does not include:

(1) Malfunction or damage caused by improper use, repair or modification.

(2) Failure or damage due to falling.

(3) Failure or damage caused by fire, earthquake, flood, lightning and other natural disasters.

(4) Malfunction or damage when used other than for its intended purpose.

(5) Failure or damage caused by third-party products.

(6) Failure or damage to the product caused by human factors.

## **FCC Warning:**

This device complies with part 15 of the FCC Rules. Operation is subject to the following two conditions:

- (1) This device may not cause harmful interference
- (2) this device must accept any interference received, including interference that may cause undesired operation.

**Note:** This equipment has been tested and found to comply with the limits for a Class B digital device, pursuant to part 15 of the FCC Rules. These limits are designed to provide reasonable protection against harmful interference in a residential installation. This equipment generates, uses and can radiate radio frequency energy and, if not installed and used in accordance with the instructions, may cause harmful interference to radio communications. However, there is no guarantee that interference will not occur in a particular installation. If this equipment does cause harmful interference to radio or television reception, which can be determined by turning the equipment off and on, the user is encouraged to try to correct the interference by one or more of the following.

## **Measures:**

- Reorient or relocate the receiving antenna.
- Increase the separation between the equipment and receiver.
- Connect the equipment into an outlet on a circuit different from that to which the receiver is connected.
- Consult the dealer or an experienced radio/TV technician for help.

**Note:** The Grantee is not responsible for any changes or modifications not expressly approved by the party responsible for compliance. such modifications could void the user's authority to operate the equipment.

The device has been evaluated to meet general RF exposure requirement. To maintain compliance with FCC's RF exposure guidelines, the distance must be at least 20 cm between the radiator and your body, and fully supported by the operating and installation configurations of the transmitter and its antenna(s).

**MADE IN CHINA**