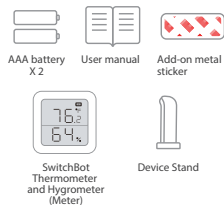


SwitchBot Thermometer and Hygrometer

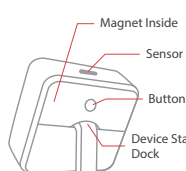
User Manual



In The Box



Device Instructions



How To Install

- 1 Install two AAA batteries into the battery box.
- 2 For non-iron surfaces, stick the add-on metal sticker to the surface. Then place Meter on the metal sticker.

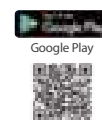
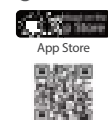
Metal Side



Sticker Side



- 3 Get the SwitchBot app.



www.switch-bot.com

Setup and Troubleshooting: support.switch-bot.com
Support Email: support@wondertechlabs.com

SwitchBot

- 4 Create a SwitchBot account and sign in from the app's Profile page. Then add Meter to your account. Learn more at, support.switch-bot.com/hc/en-us/articles/360038241053



Change the Temperature Unit

Press the button on the back of Meter once to change the temperature unit on the physical display. Learn more at, support.switch-bot.com/hc/en-us/articles/360038241073

support.switch-bot.com/hc/en-us/articles/360038241073



Reset the Device

Long press the button on the back of Meter for 15 seconds. Learn more at, support.switch-bot.com/hc/en-us/articles/360037754854

support.switch-bot.com/hc/en-us/articles/360037754854



Setting Alert

You could set up temperature /humidity alert with Meter and it will send notifications to your phone via Bluetooth.

* If you are using an Android phone, a SwitchBot Hub Plus/Mini is required to use this feature. Learn more at, support.switch-bot.com/hc/en-us/articles/360038241413

support.switch-bot.com/hc/en-us/articles/360038241413



Remote Access

If you have a SwitchBot Hub Plus/Mini (sold separately), you could monitor Meter remotely and history data will be synced to SwitchBot server via the Hub device. * Enable Cloud Service first while using with a Hub Plus/Mini. Learn more at, support.switch-bot.com/hc/en-us/articles/360038241053

support.switch-bot.com/hc/en-us/articles/360038241053



Scene

If you have a SwitchBot Hub Plus/Mini (sold separately), you could create automations or scenes with Meter. You could turn on/off SwitchBot devices and home appliances triggered by temperature/humidity thresholds. Learn more at, support.switch-bot.com/hc/en-us/articles/360037756654

support.switch-bot.com/hc/en-us/articles/360037756654



Voice Control

If you have a SwitchBot Hub Plus/Mini (sold separately), you could get current temperature or humidity using voice commands with Alexa, Google Assistant, Siri, or more. * Enable Cloud Service first before using voice control services. support.switch-bot.com/hc/en-us/articles/360038241993

• How to connect to Amazon Alexa

support.switch-bot.com/hc/en-us/articles/360038241993



• How to connect to Google Home

support.switch-bot.com/hc/en-us/articles/360037755234



• How to connect to HomePod/Siri

support.switch-bot.com/hc/en-us/articles/360038242593



Work with IFTTT

If you have a SwitchBot Hub Plus/Mini (sold separately), You could turn on/off SwitchBot devices and home appliances triggered by temperature/humidity thresholds using IFTTT. You could also use other smart routines such as sun rise and sun set time to control your appliances. support.switch-bot.com/hc/en-us/articles/360039457314

support.switch-bot.com/hc/en-us/articles/360039457314



History Data

On Meter's History page, you could review temperature and humidity data in interactive graphs. Tap a point on the graph to see data at a specific moment. Learn more at, support.switch-bot.com/hc/en-us/articles/360060298693

support.switch-bot.com/hc/en-us/articles/360060298693



Export the Data

On Meter's History page, tap Export Data below the graphs to save data as a .csv file. * Turn off Cloud Service on Meter's Settings page first for more up-to-date data. support.switch-bot.com/hc/en-us/articles/360037754674

support.switch-bot.com/hc/en-us/articles/360037754674



Specification

Model Number	SwitchBot MeterTH S1
Size	55mm x 55mm x 24mm / 2.17" x 2.17" x 0.94"
Weight	69g / 2.43oz (with batteries)
Power & Battery Life	AAA x 2, typically 1 year
Resolution	0.1°C/0.1°F, 1%RH
Measure Range	-20°C~80°C (-4.0°F~176.0°F) 0~99%RH
Temperature Accuracy (Typical)	(-20°C~0°C/-4°F~32°F): ±0.4°C/±0.7°F (0°C~65°C/32°F~149°F): ±0.2°C/±0.4°F (65°C~80°C/149°F~176°F): ±0.3°C/±0.5°F
Humidity Accuracy (Typical)	10%~90%RH: ±2% 0%~10% 90%~99%RH: ±4%

Return and Refund Policy

SwitchBot Meter has one year warranty (start from the purchasing day). The situation below do not fit the Return and Refund Policy

- Intended damage or abuse.
- Inappropriate storage (drop down or soaking in water).
- User modify or repair.
- Using loss.
- Force majeure damage (Natural disasters).

FAQ

Q: The Meter shows nothing.
A: Please change the batteries.

Q: The alert doesn't work.
A: Please place the Meter in the Bluetooth range from your phone.

Q: The history data doesn't show up.
A: Please place the Meter in the Bluetooth range from your phone.

If you have any concern or problem when using our products, please kindly send feedback from the Profile > Feedback page in the SwitchBot app.

CE Warning

Manufacturer's Name: Woan Technology (Shenzhen) Co., Ltd. This product is a fixed location. To comply with RF exposure requirements, a minimum separation distance of 20cm must be maintained between the user's body and the device, including the antenna. Use only the supplied

or an approved antenna. This device in compliance with the essential requirements and other relevant provisions of Directive 2014/53/EU. All essential radio test suites have been carried out.
1. CAUTION : RISK OF EXPLOSION IF BATTERY IS REPLACED BY AN INCORRECT TYPE. DIS-

POSE OF USED BATTERIES ACCORDING TO THE INSTRUCTIONS
2. The device complies with RF specifications when the device used at 20cm from your body

FCC Warning

This device complies with part 15 of the FCC Rules. Operation is subject to the following two conditions: (1) This device may not cause harmful interference, and (2) this device must accept any interference received, including interference that may cause undesired operation. Any

Changes or modifications not expressly approved by the party responsible for compliance could void the user's authority to operate the equipment. This equipment has been tested and found to comply with the limits for a Class B digital device, pursuant to part

15 of the FCC Rules. These limits are designed to provide reasonable protection against harmful interference in a residential installation. This equipment generates uses and can radiate radio frequency energy and, if not installed

and used in accordance with the instructions, may cause harmful interference to radio communications. However, there is no guarantee that interference will not occur in a particular installation. If this equipment does cause harmful interference to radio or

television reception, which can be determined by turning the equipment off and on, the user is encouraged to try to correct the interference by one or more of the following measures:
-Reorient or relocate the receiving antenna.
-Increase the separation

between the equipment and receiver.
-Connect the equipment into an outlet on a circuit different from that to which the receiver is connected.
-Consult the dealer or an experienced radio/TV technician for help. The device has been

evaluated to meet general RF exposure requirement. The device can be used in portable exposure condition without restriction.
FCC RF exposure statement: The equipment complies with FCC Radiation exposure limit set forth for uncontrolled environ-

ment. This equipment should be installed and operated with minimum distance 20cm between the radiator and your body.

KCC Warning

인증받은자의상호: Woan Technology (Shenzhen) Co., Ltd.
제품명/모델명: 특정소출력무선기기(무선데이터통신시스템용무선기기) / SwitchBot MeterTH S1
제조자및제조국가: Woan

Technology (Shenzhen) Co., Ltd. /China
제조년월: 2021.08
인증번호: R-R-Woa-Meter
이장치는보안성이없으므로통신보안예외배되는사항의통신을금지하며운용중

NCC 警告語

依據低功率電波輻射性電機管理辦法第十二條
※經型式認證合格之低功率射頻電機，非經許可，公司、商號或使用者均不得擅自變更頻率、加大功率或變更原設計之特性及功能。
第十四條
※低功率射頻電機之使用不得影響

飛航安全及干擾合法通信；經發現有干擾現象時，應立即停用，並改善至無干擾時方得繼續使用。
-前項合法通信，指依電信法規定作業之無線電通信。
-低功率射頻電機須忍受合法通信或工業、科學及醫療用電波輻射性電機設備之干擾。