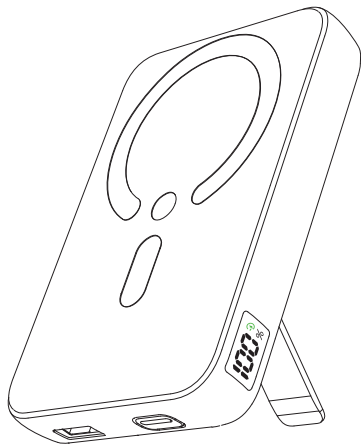


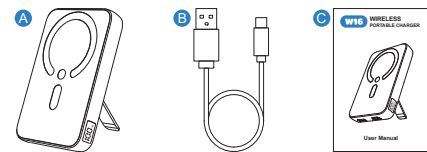
成品尺寸: 70mm X 105mm  
材质: 105g哑粉纸  
印刷颜色: 四色印刷  
装订方式: 风琴五折页

W16 WIRELESS PORTABLE CHARGER



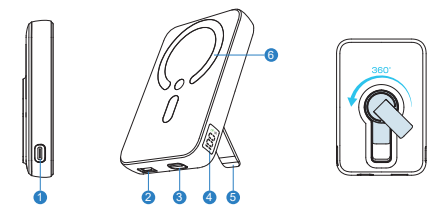
User Manual

Package Contents:



- A Wireless Portable Charger x1
- B Type-C Charging Cable x1
- C User Manual x1

Product Overview

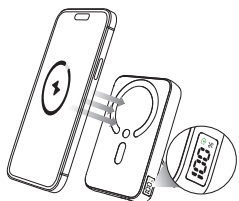


- 1 TYPE-C Input/Output Port
- 2 USB A Output Port
- 3 Power Button
- 4 LED Display
- 5 360 °Rotatable Bracket
- 6 Wireless Charging Surface

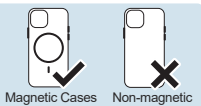
- 1 -

Charging Method

Wireless Charging Mode



The wireless charging does not compatible with the non-magnetic phone case.



- Place devices that support magnetic connection technology on the portable charger. To keep the device firmly attached to the portable charger, make sure it is located in the center of the circular icon on the portable charger.
- Magnetic portable charger will automatically charge the device, and the LED display will show the current battery level of the portable charger. (In fast charging mode, the green fast charging logo will always be on)
- When the electronic device is fully charged or uninstalled, the indicator light will turn off after about 30 seconds, and the portable charger will turn off.

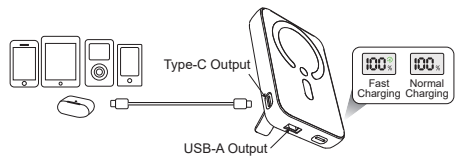
\* During charging, double-click the power button to turn off the output, and click it again to continue the output.

- 2 -

Note:

- \* The device to be charged needs to support wireless magnetic charging capability.
- \* Magnetic suction function is compatible with iPhone 12/13/14/15 Series or newer models.
- \* Not compatible with non-magnetic phone cases, magnetic and metal attachments will interfere with charging.

Wired Charging Mode

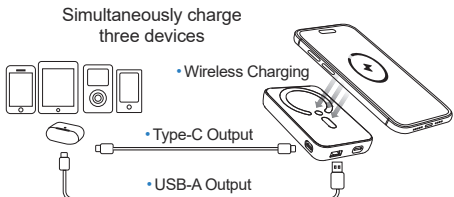


- Use the charging cable (not included) to connect the corresponding port to the device you need to charge. Plug the other end of the charging cable into the USB A or TYPE C output port of the portable charger.
- Automatically charge the device after a successful connection, the LED display is always on and indicates the current power level of the portable charger. (In fast charging mode, the green fast charging logo will always be on)
- When the electronic device is fully charged or the charging cable is removed, the indicator light will turn off after about 30 seconds, and the portable charger will turn off.

\* During charging, double-click the power button to turn off the output, and click it again to continue the output.

- 3 -

Wired & Wireless Charging



Place your compatible mobile device onto the portable charger's wireless charging area and use the charging cables to connect two other electronic devices to the corresponding USB-A/Type-C output ports.

\* This product supports up to three devices charging at the same time (USB-A/Type-C/Wireless charging).

Low Current Mode

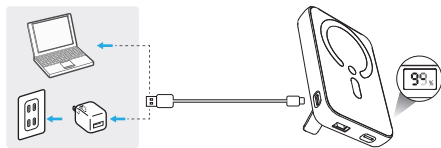
	Description	LED Display
Low current mode ON	When portable charger is powered on, press and hold the power button for 3 seconds to activate low current mode	Single digit circular running
Low current mode OFF	Press and hold the power button again for 3 seconds to exit low current mode	

Note: To protect the battery life of devices with low charging current, such as watches and headphones. Please use low current mode for charging.

- 4 -

Charge for Portable Charger

- Insert the Type-C port of included charging cable into the Type-C input port of the portable charger.
- Plug the other end (the USB port) of the charging cable into AC adapter or into the computer USB port.  
\*The AC adapter is not included in the package.
- When the portable charger starts charging, the LED light displays 188 first and then the single-digit number flashes.
- The power bank's LED power display will be 100% after fully charged.

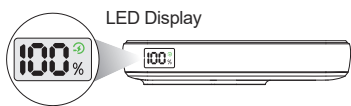


Button Operation and LED Display



Standby state		
Press once	Turn on	Display remaining power
Press twice	Turn off	LED light goes out
Charging the device		
Press twice	Stop output	LED light goes out
Press again	Continue output	LED lights on

- 5 -



100%	Remaining power
Fast charging mode	
99%	Charge for portable charger

Specification

Model	W16
Battery Capacity	3.85V/12000mAh
Charging Method	Type-C port
Type-C Input	5V/3A, 9V/2A
Type-C Output	5V/3A, 9V/2.22A, 12V/1.67A
USB-A Output	5V/3A, 9V/2A, 10V/2.25A, 12V/1.5A
Wireless Output	15W(Max)
Product Weight	207g

- 6 -

Tips

Failed to charge the power bank

- This product is not connected properly to the AC charger.
- Check if the AC charger or charging cable can charge other devices normally. If damaged, please replace it.
- Using a charging line to connect the input port to the output port by mistake, please replace with a Type-C input type cable.

The charged device does not respond after connecting

- Our product is low power, please charge it in time.
- The voltage of being charged device is not compatible with our product, Please check.
- The connection between our product and the charged device is incorrect.
- The charging cable or connector is damaged. Please change them.
- Using a charging line to connect the output port to the input port by mistake will cause short-circuit protection.

Notice

- Do not pierce or strike the product with sharp objects.
- Do not dispose of this product in the fire to avoid an explosion.
- Do not disassemble or modify the external structure of the product. Incorrect reassembly may result in a risk of fire or personal injury.
- Do not clean the product with harmful chemicals or detergents.

- 7 -

- Do not immerse the product in liquids and avoid contact with corrosive substances.
- Do not charge the portable charger for more than 10 hours, and disconnect the power supply timely after charging is completed.
- If you use a non-standard charger, or modify the charger parameters, it may cause the battery to overheat, burn, and explode.
- If the battery expands, weeps, or is abnormal, please discontinue use immediately.
- Please store the product in a clean and dry place with an ambient temperature of 0°C~35°C and the humidity is between 20-80%.
- We are not liable for the damage caused by people or improper operation.
- If the product is not being used for a long time, please charge it every 2 months to preserve its lifespan.

Warning

This device complies with part 15 of the FCC Rules. Operation is subject to the following two conditions: (1) this device may not cause harmful interference, and (2) this device must accept any interference received, including interference that may cause undesired operation. Any changes or modifications not expressly approved by the party responsible for compliance could void the user's authority to operate the equipment. NOTE: This equipment has been tested and found to comply with the limits for a Class B digital device, pursuant to Part 15 of the FCC Rules. These limits are designed to

- 8 -

provide reasonable protection against harmful interference in a residential installation. This equipment generates, uses and can radiate radio frequency energy and, if not installed and used in accordance with the instructions, may cause harmful interference to radio communications. However, there is no guarantee that interference will not occur in a particular installation. If this equipment does cause harmful interference to radio or television reception, which can be determined by turning the equipment off and on, the user is encouraged to try to correct the interference by one or more of the following measures:

- Reorient or relocate the receiving antenna.
- Increase the separation between the equipment and receiver.
- Connect the equipment into an outlet on a circuit different from that to which the receiver is connected.
- Consult the dealer or an experienced radio/TV technician for help.

The device has been evaluated to meet general RF exposure requirement. The device can be used in portable exposure condition without restriction.

- 9 -