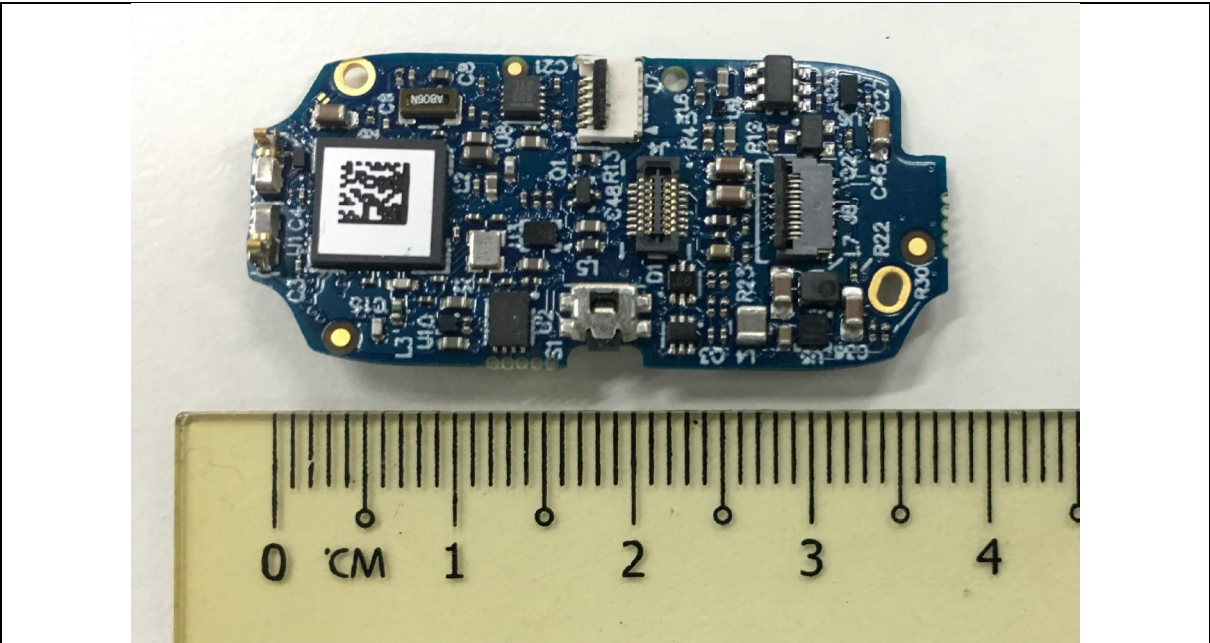
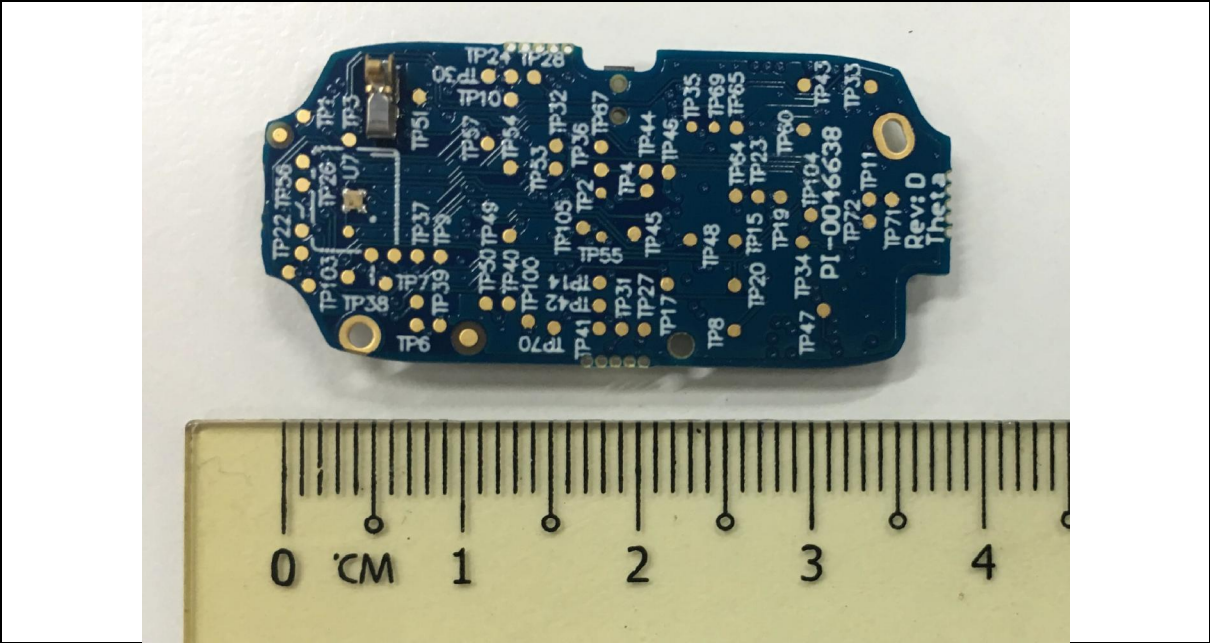


PCB PHOTOGRAPHS

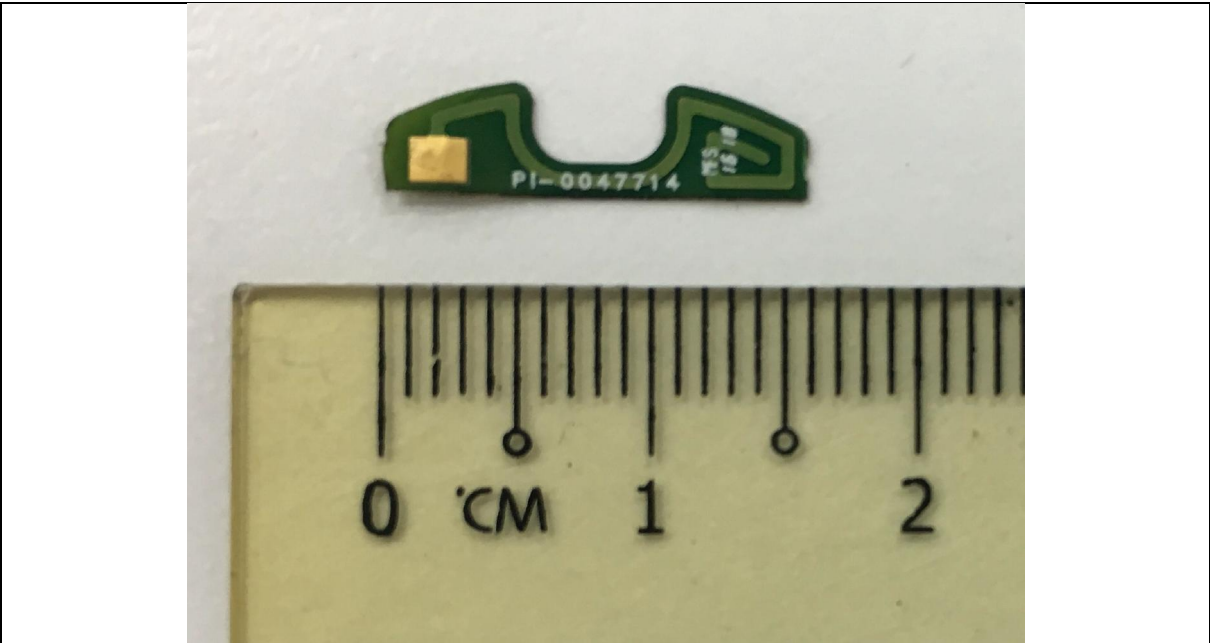


Main PCB Front View

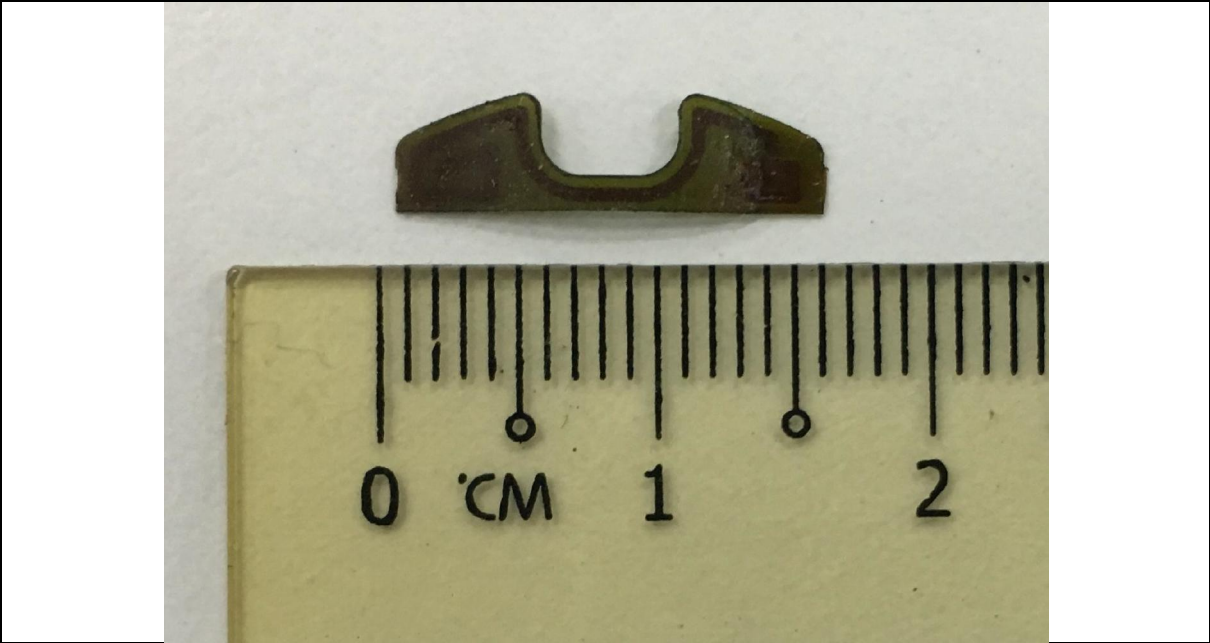


Main PCB Rear View

PCB PHOTOGRAPHS

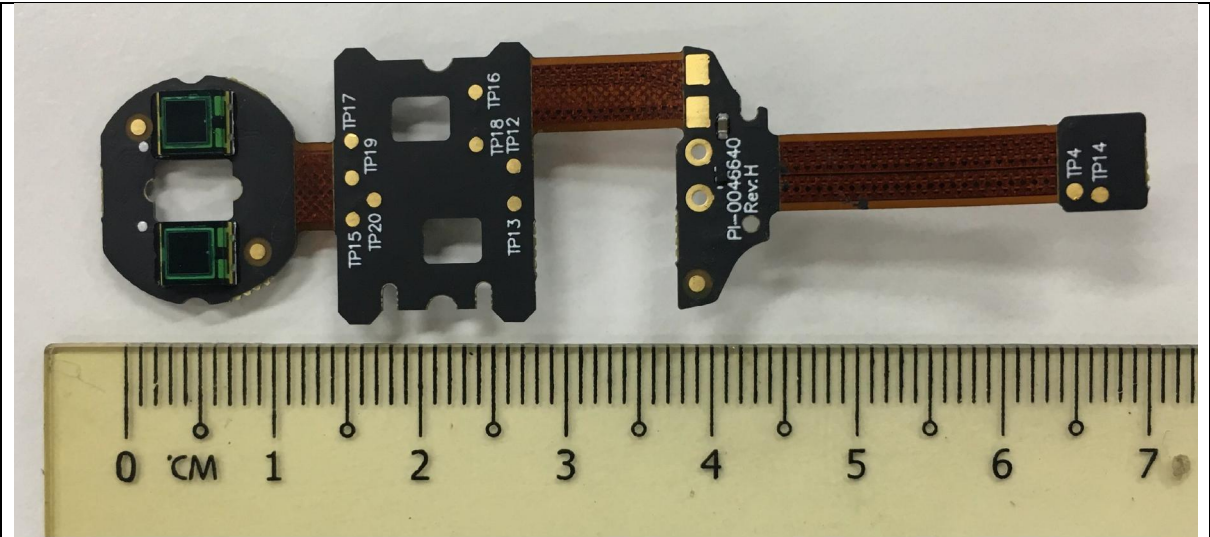


Antenna PCB Front View

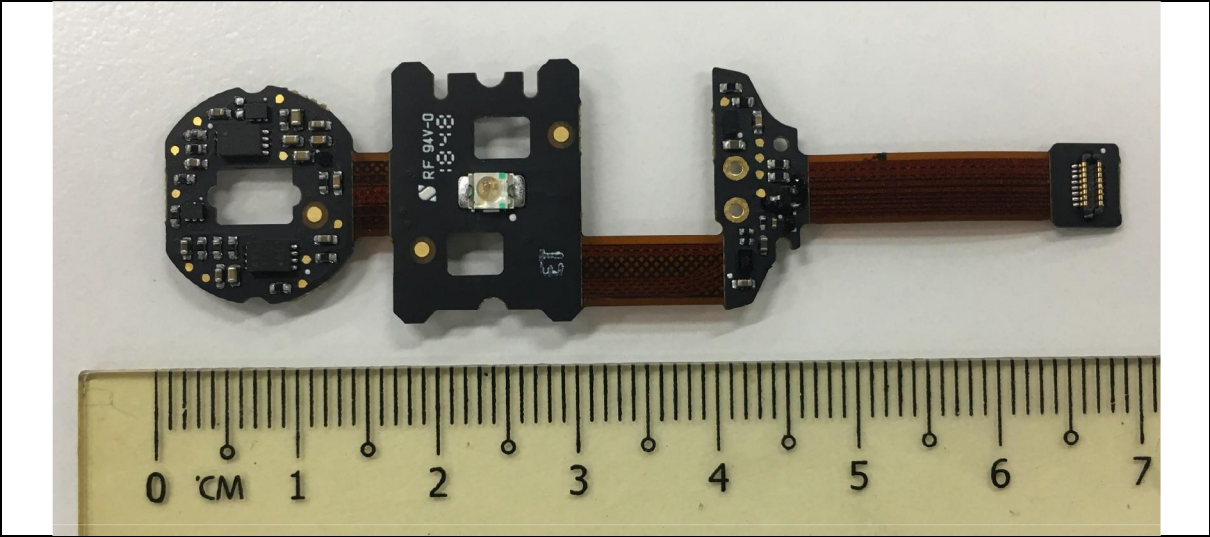


Antenna PCB Rear View

PCB PHOTOGRAPHS

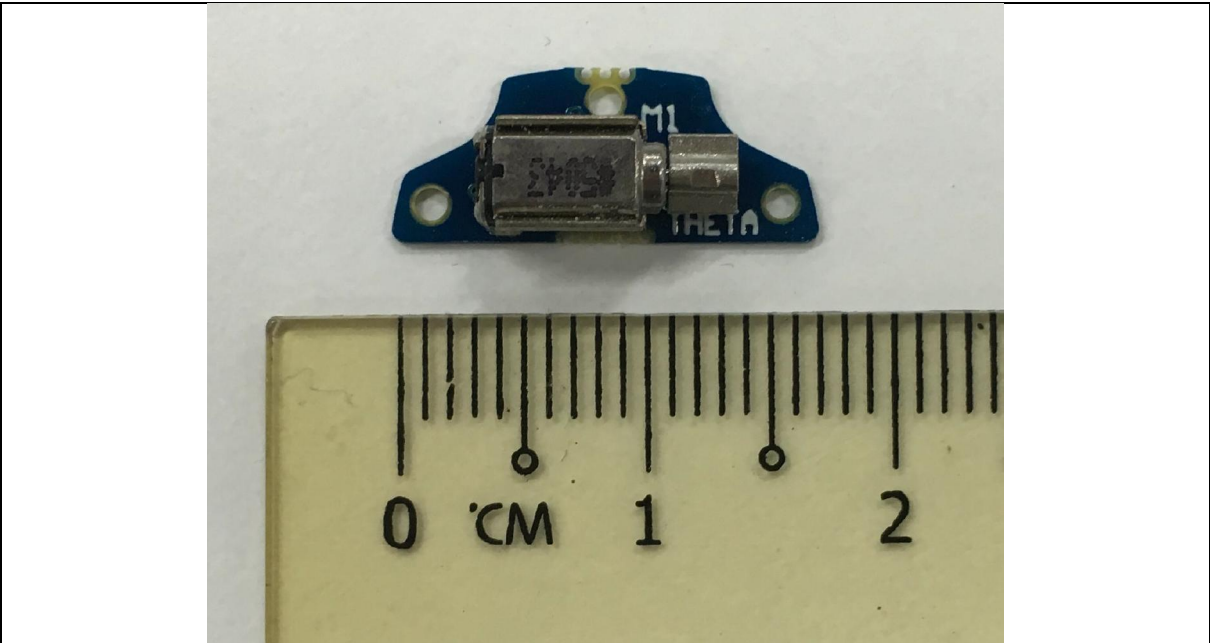


Sensor PCB Front View

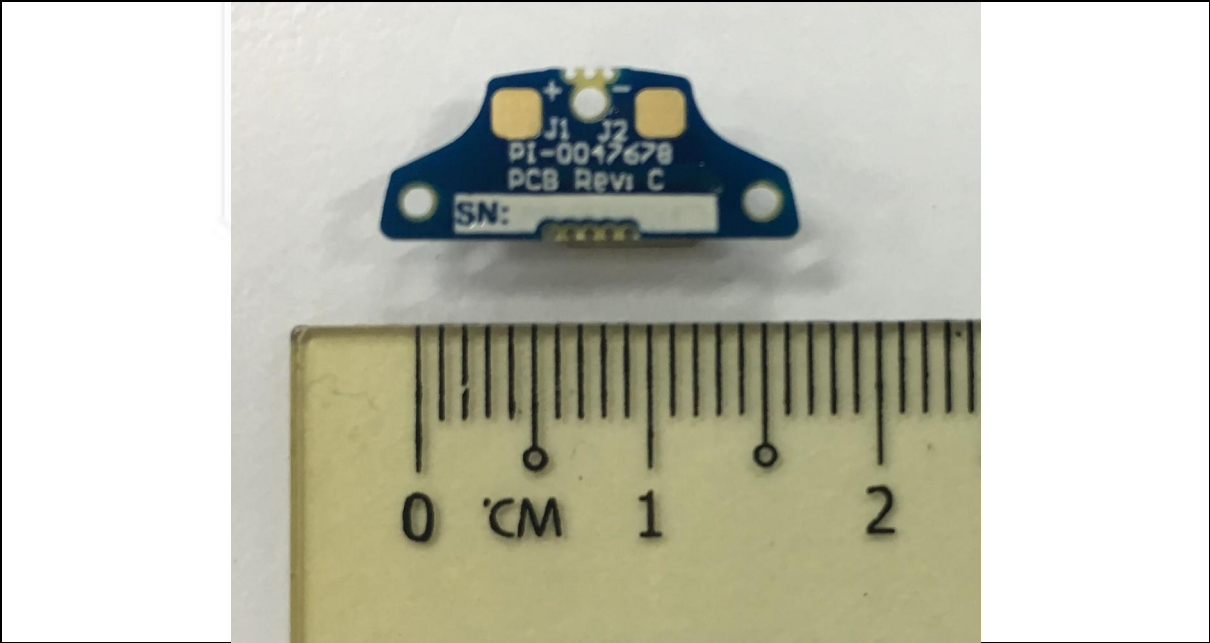


Sensor PCB Rear View

PCB PHOTOGRAPHS



Haptic PCB Front View



Haptic PCB Rear View