

107.95mm

The Fine Print

FCC Statement

This equipment has been tested and found to comply with the limits for a Class B digital device, pursuant to Part 15 of the FCC Rules. These limits are designed to provide reasonable protection against harmful interference in a residential installation. This equipment generates uses and can radiate radio frequency energy and, if not installed and used in accordance with the instructions, may cause harmful interference to radio communications. However, there is no guarantee that interference will not occur in a particular installation. If this equipment does cause harmful interference to radio or television reception, which can be determined by turning the equipment off and on, the user is encouraged to try to correct the interference by one or more of the following measures:

- Reorient or relocate the receiving antenna.
- Increase the separation between the equipment and receiver.
- Connect the equipment into an outlet on a circuit different from that to which the receiver is connected.
- Consult the dealer or an experienced radio/TV technician for help. This device complies with part 15 of the FCC Rules.

Operation is subject to the following two conditions:  
(1) This device may not cause harmful interference, and  
(2) This device must accept any interference received, including interference that may cause undesired operation.

The Fine Print

Warning:

Changes or modifications to this unit not expressly approved by the party responsible for compliance could void the user's authority to operate the equipment.

Need help? We're here for you every day from 7 a.m.-9 p.m. CST. Give us a call at 1-888-516-2630

Produced for Walmart Inc.  
Bentoville, AR 72716

Ver. 01 06/12/19

FCC ID: 2ADZH-ONN2481

We'd love to hear from you. Scan with your Walmart app and let us know what you think.



onn.™

Wireless Headset  
Quick Start Guide

FRONT

79.37mm

79.37mm

79.37mm

79.37mm

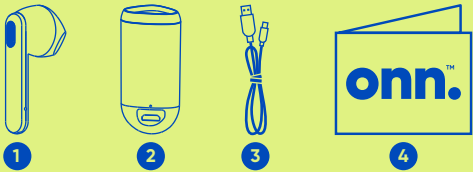
317.5mm

Get to Know Your Wireless Earphone

- 1) Model: WIAWHT100012481
- 2) Speaker Rated Input Power: 3mW
- 3) Speaker Maximum Input Power: 5mW
- 4) Speaker Diameter: 10mm
- 5) Speaker Impedance: 16Ω±15%
- 6) Sensitivity: 103±4dB
- 7) Charging Cable: 25cm

What's in the Box?

Check to make sure you have everything below



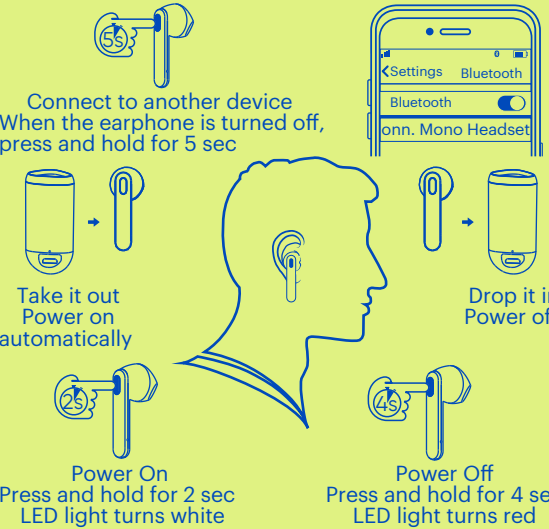
- 1. Wireless Headset
- 2. Charging Case x1
- 3. Micro-USB Charging Cable x1
- 4. Quick Start Guide

Let's Get Started!

On/Off & Pairing

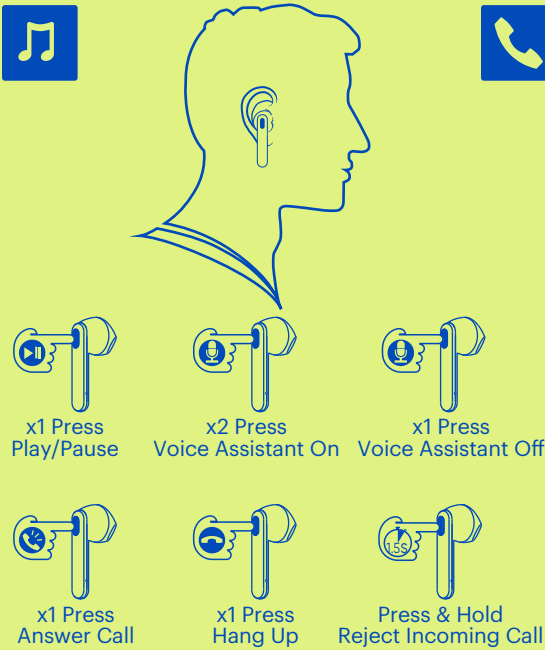
01

For first time setup, please remove the insulating films and drop earphone back to the charging case again for activation. Then take it out, **do not push any buttons**, earphone will automatically go into pairing mode. Connect your device by searching for "onn. Mono Headset".



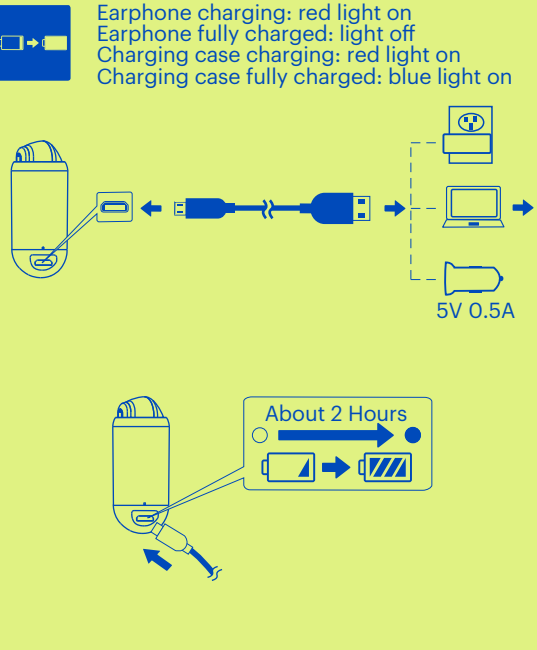
Enjoy Your Music & Take a Clear Phone Call

02



Charge Your Earphone

03



PANTONE 2728 C



PANTONE 2295