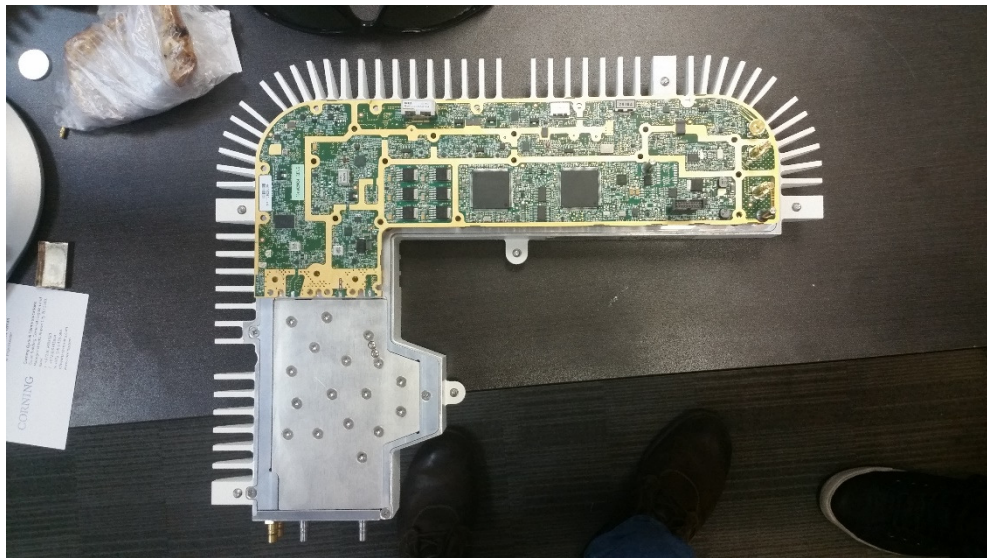
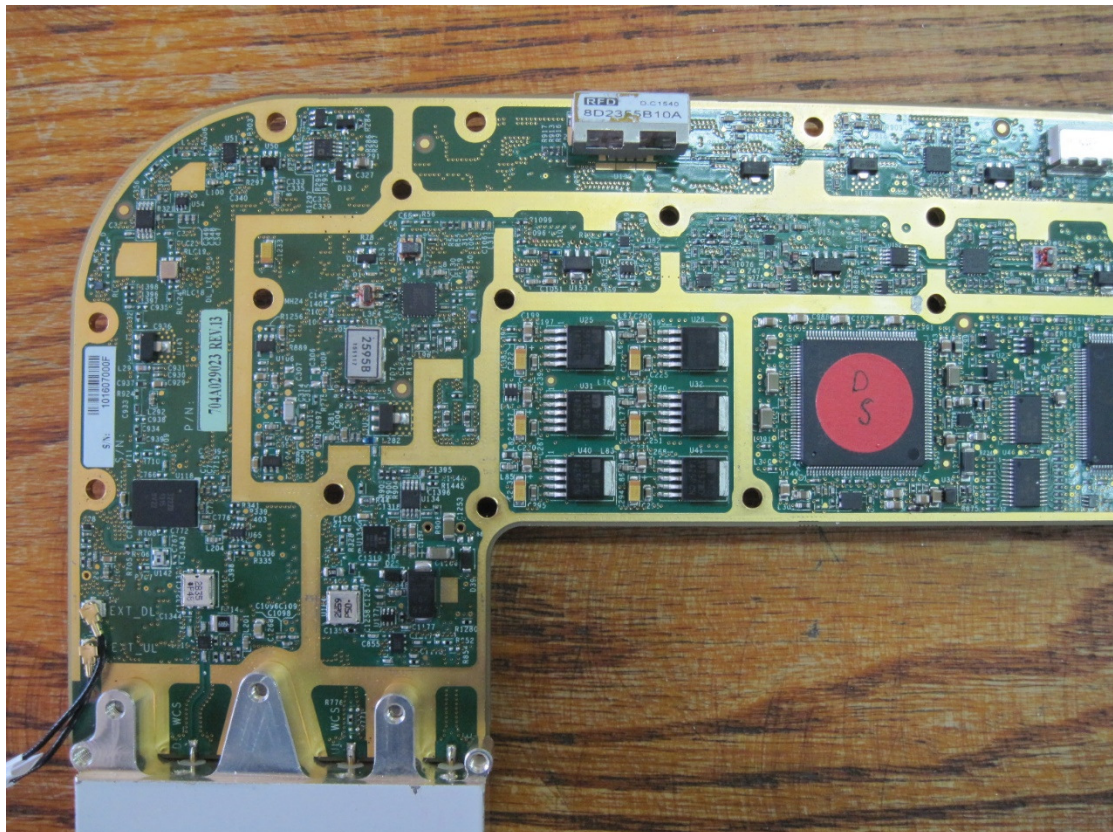




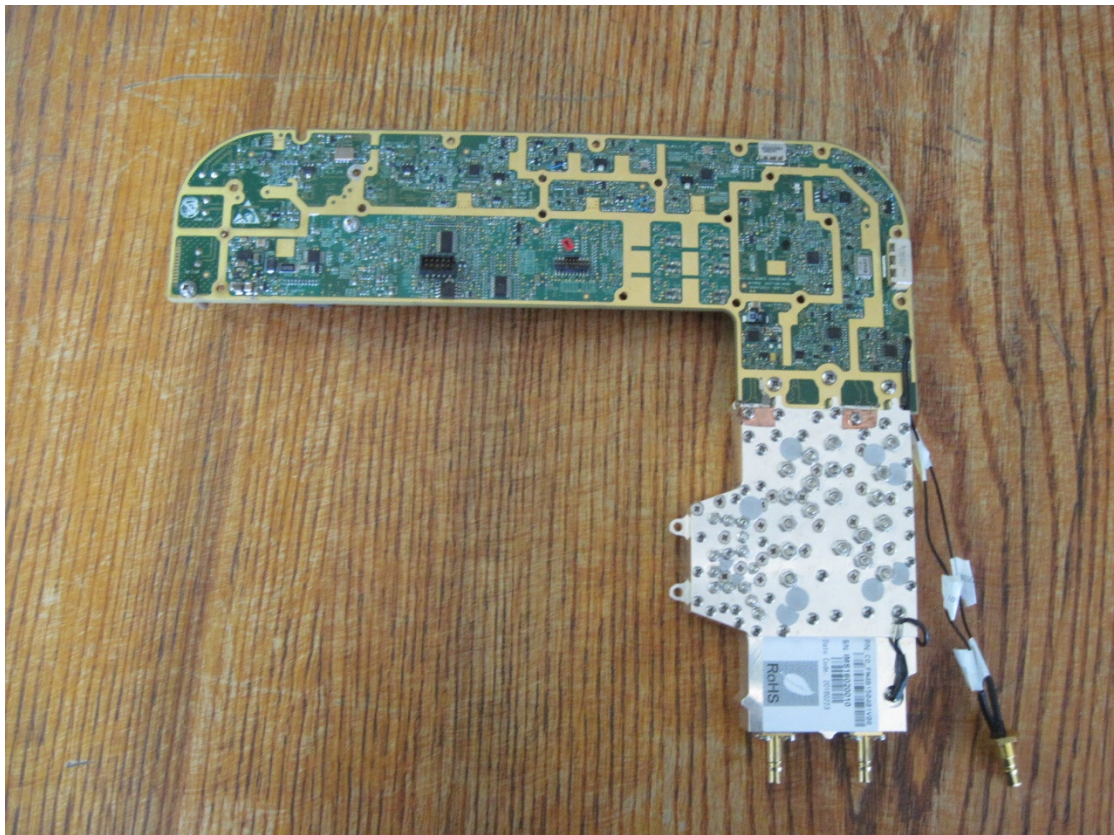
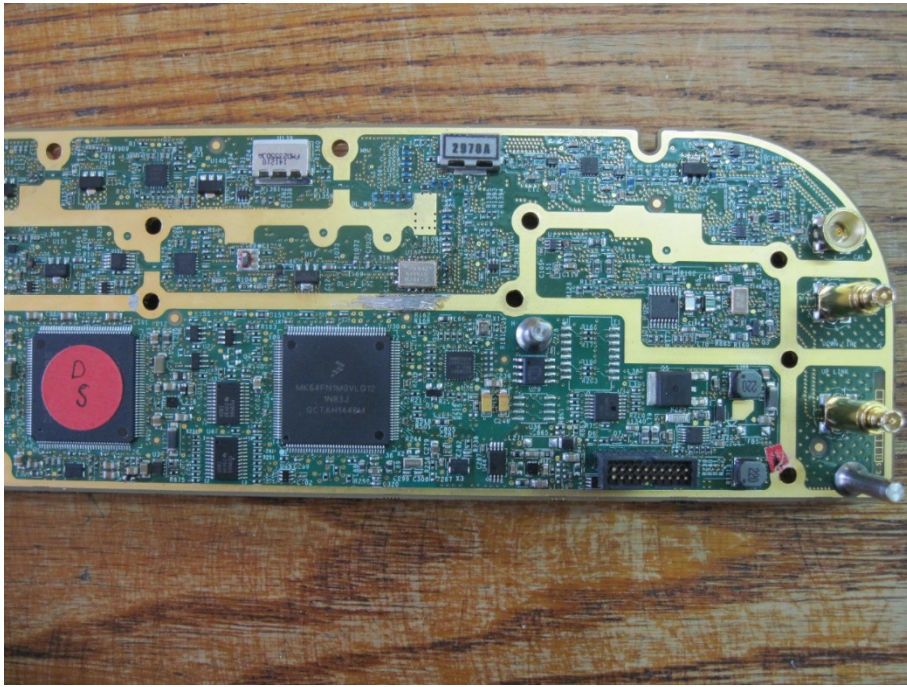
RF cavity filter with cover removed that is connected to end of PCB



split close-up pictures of above photo









A detailed view of the internal circuit board of a laptop, showing various components like the CPU, RAM, and storage drive, mounted on a green PCB with gold-colored traces. The board is populated with numerous integrated circuits, capacitors, and other electronic components. A large, multi-pin connector is visible on the right side, likely for the display or keyboard. The board is mounted on a wooden surface.

