

MISTING FAN

USER MANUAL

FZ10-25TRD

Warning notices: Before using this product, please read this manual carefully and keep it for future reference. The design and specifications are subject to change without prior notice for product improvement. Consult your dealer or manufacturer for detailed information. The diagram shown is just for reference. Please take the appearance of the actual product as the standard.

SAFETY INSTRUCTIONS

Intended Use

The following safety guidelines are intended to prevent unforeseen risks or damage from unsafe or incorrect operation of the appliance. Please check the packaging and appliance on arrival to make sure everything is intact to ensure safe operation. If you find any damage, please contact the retailer or dealer. Please note modifications or alterations to the appliance are not allowed for your safety concern. Unintended use may cause hazards and loss of warranty claims.

Explanation of Symbols

	Danger This symbol indicates that there are dangers to the life and health of persons due to extremely flammable gas.
	Warning of electrical voltage This symbol indicates that there is a danger to life and health of persons due to voltage.
	Warning The signal word indicates a hazard with a medium level of risk which, if not avoided, may result in death or serious injury.
	Caution The signal word indicates a hazard with a low degree of risk which, if not avoided, may result in minor or moderate injury.
	Attention The signal word indicates important information (e.g. damage to property), but not danger.
	Observe instructions This symbol indicates that a service technician should only operate and maintain this appliance in accordance with the operating instructions.

Read these operating instructions carefully and attentively before using/commissioning the unit and keep them in the immediate vicinity of the installation site or unit for later use!

Product Model	FZ10-25TRD
Voltage	120V~
Frequency	60Hz
Power	55W

02

IMPORTANT SAFETY INSTRUCTIONS READ AND SAVE THESE INSTRUCTIONS

CAUTION

- Read rules for safe operation and instructions carefully.
- This appliance is not intended for use by persons (including children) with reduced physical, sensory or mental capabilities, or lack of experience and knowledge, unless they have been given supervision or instruction concerning use of the appliance by a person responsible for their safety. Children should be supervised to ensure that they do not play with the appliance.
- Keep electrical appliances out of reach from Children or infirm persons. Do not let them use the appliances without supervision.
- Never insert fingers, pencils, or any other object through the grille when the fan is running.
- Disconnect the fan when moving it from one location to another.
- Be sure the fan is on a stable surface when operating to avoid overturning.
- Do not use the fan by a window as rain may create an electrical hazard.
- The rotor blade grille shall not be removed at any time. To clean the fan the following procedure shall be followed:
 - Unplug the fan prior to cleaning.
 - DO NOT remove the rotor blade guard.
 - Wipe the fan enclosure and rotor blade guard with a slightly damp cloth.

WARNING

- If the supply cord is damaged, it must be replaced by the manufacturer, its service agent or a similarly qualified person in order to avoid a hazard.
- To protect against the risk of electrical shock, do not immerse the unit, cord or plug in water or other liquid.
- When the appliance is not in use and before cleaning, unplug the appliance from the outlet.
- This appliance has a polarized plug (one blade is wider than the other). To reduce the risk of electric shock, this plug is intended to fit in a polarized outlet only one way. If the plug does not fit fully in the outlet, reverse the plug. If it still does not fit, contact a qualified electrician. Do not attempt to defeat this safety feature.
- WARNING:** To reduce the risk of fire or electric shock, do not use this fan with any solid-state speed control device.
- To Reduce The Risk Of Fire, Electric Shock Or Injury To Persons, Do Not Use Replacement Parts That Have Not Been Recommended By The Manufacturer (e.g. Parts Made At Home Using A 3D Printer).

03

04

- Please note that any changes or modifications of this product not expressly approved by the party responsible for compliance could void the user's authority to operate the equipment.
- Unplug or disconnect the appliance from the power supply before servicing.
- Do not operate any fan with a damaged cord or plug. Discard fan or return to an authorized service facility for examination and/or repair.
- Do not run cord under carpeting. Do not cover cord with throw rugs, runners, or similar coverings. Do not route cord under furniture or appliances. Arrange cord away from traffic area and where it will not be tripped over.
- Empty and clean the water tank before storage. Clean the water tank before next use.
- WARNING:** Micro-organisms that may be present in the water or in the environment where the appliance is used or stored, can grow in the water reservoir and be blown in the air causing very serious health risks when the water is not renewed and the tank is not cleaned properly every 3 days.
- Clean the water tank every three days.

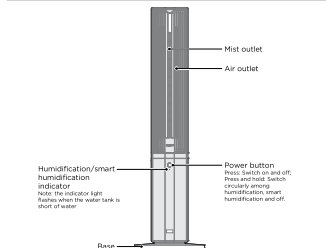
- This device complies with Part 15 of the FCC Rules. Operation is subject to the following two conditions: 2) This device may not cause harmful interference, and 2.2 This device must accept any interference received, including interference that may cause undesired operation. 3 Caution: The user is cautioned that changes or modifications not expressly approved by the party responsible for compliance could void the user's authority to operate the equipment. Note: This equipment has been tested and found to comply with the limits for a Class B digital device, pursuant to part 15 of the FCC Rules. These limits are designed to provide reasonable protection against harmful interference in a residential installation. This equipment generates uses and can radiate radio frequency energy and, if not installed and used in accordance with the instructions, may cause harmful interference to radio communications. However, there is no guarantee that interference will not occur in a particular installation. If this equipment does cause harmful interference to radio or television reception, which can be determined by turning the equipment off and on, the user is encouraged to try to correct the interference by one or more of the following measures:
 - Reorient or relocate the receiving antenna.
 - Increase the separation between the equipment and receiver.
 - Connect the equipment into an outlet on a circuit different from that to which the receiver is connected.
 - Consult the dealer or an experienced radio/TV technician for help.

Midea America Corp.
Parsippany, NJ 07054
TEL: 1-866-646-4332

04

PRODUCT OVERVIEW

Part Name



- NOTE**
The pictures contained in the Manual are for reference only, and it is subject to the physical product in the packing box.

06

PRODUCT INSTALLATION

Base installation

- Take the two parts of the base out of the packaging box, align the centers of the two parts of the base and place them crosswise, then rotate one of the bases to align the holes and lock them.
- First unscrew the base lock nut from the bottom of the main unit, then pass the power cord through the base, and finally tighten the base lock nut clockwise.
- Press the power cord down along the base wire groove so that the power cord is completely stuck in the two ends of the wire groove.

07

Tank Water Filling Instructions

- NOTE**
 - Unplug the power plug before adding water.
 - It is forbidden to add chemical substances such as aromatherapy oil or essential oil to the water tank.
- Open the water tank cover under the grille on the back of the machine, and then take out the water tank.
 - After taking out the water tank, unscrew the water tank cover counterclockwise, and then add water to the tank. (Note it is recommended to use pure water.)

Tank Water Filling Instructions

- NOTE**
 - Please unplug the power plug before draining.
- Open the water tank cover under the grille on the back of the machine.
 - Open the silicone plug of the drain pipe under the water tank, and the residual water in the water tank will be discharged through the drain pipe.

08

OPERATION INSTRUCTIONS

Remote Control Operation

- Use of the remote control: Please refer to the lower heater panel operation and display section for the key functions of the remote control.
- The remote control can be used in front of the product within 15 ft.

Display Area Indicator	
A	On/Off button
B	Indicator light
C	Indicator light
D	Indicator light
E	Indicator light
F	Indicator light
G	Indicator light
H	Indicator light
I	Indicator light
J	Indicator light
K	Indicator light
L	Indicator light
M	Indicator light
N	Indicator light
O	Indicator light
P	Indicator light
Q	Indicator light
R	Indicator light
S	Indicator light
T	Indicator light
U	Indicator light
V	Indicator light
W	Indicator light
X	Indicator light
Y	Indicator light
Z	Indicator light

NO	Buttons	Function description
1	On/Off button	On/Off button
2	+/− button	Set wind speed and other time
3	Timer button	Timer button
4	Sleep button	Sleep button
5	Humidification button	Humidification button
6	Mode button	Mode button
7	ECO button	ECO button

- NOTE**
 - Please use a manganese or alkaline battery of type "AAA" and do not use other replaceable battery.
 - Do not mix new batteries with old batteries.
 - Do not use alkaline, standard (carbon-zinc), or rechargeable (Ni-Cd, Ni-MH, etc.) batteries.
- CAUTION**
 - If there is no operation during the operation of the machine, the machine will automatically shut down after 24 hours of continuous operation.

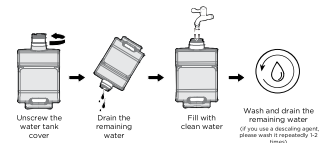
09

CLEANING AND MAINTENANCE

- NOTE**
 - Before cleaning this product, be sure to turn off the power switch and pull out the plug.
 - After cleaning and maintenance, be sure to wait until it is fully dry before powering on or storing it.
 - It is forbidden to rinse the body directly with water. You can gently wipe the surface with a soft cloth containing a little neutral detergent and then wipe it dry. Do not use solvents such as gasoline.
 - It is forbidden to disassemble the product for modification. It is recommended to check and clean this product regularly to extend its service life.
 - To avoid scale accumulation affecting the life of the machine, please clean the machine every 3-7 days according to the water quality in the area of use and the frequency of machine use.
 - It is forbidden to use detergents or other cleaning agents that can produce a large number of bubbles to clean the water tank.

Water Tank Cleaning Instructions

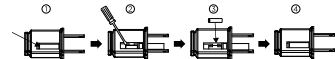
- Please take out the water tank first. For specific steps, please refer to the water filling instructions.
- Unscrew the water tank cover counterclockwise and drain the water in the tank.
- Add appropriate amount of water to the tank and soak for half an hour (add descaling agent appropriately for better cleaning effect).
- Drain the remaining water in the tank. If you use a descaling agent, the soaking time should not exceed half an hour, and wash it again with clean water 1-2 times.



10

User Servicing Instructions

- Grasp plug and remove from the receptacle or other outlet device. Do not unplug by pulling on cord.
- Open fuse cover: Slide open fuse access cover on top of attachment plug towards blades. (Figs 01)
- Remove fuse carefully: Insert the tip of your tool into fuse slot/case with the terminals, then pry the fuse gradually and slowly, but not overexert. If you feel tight, you can try it at several times, and pry the fuse little by little. When one side of the fuse has been pried, then you can get the fuse out entirely. (Fig 02)
- Risk of fire: Replace fuse only with 2.5 Amp, 125 Volt fuse. (Fig 03)
- Close fuse cover: Slide close the fuse access cover on top of attachment plug. (Fig 04)
- Risk of fire: Do not replace attachment plug. Contains a safety device(fuse)that should not be removed. Discard product if the attachment plug is damaged.
- When the fan suddenly does not work during normal operation, please check whether it is a problem with the fuse.



- NOTE**
 - When you replace the fuse, please don't operate suddenly or overexert, or else the product will be damaged or cause accident.
 - When you feel it hard to be operated, please make sure you have got the right way.
 - Risk of fire: Do not replace attachment plug. Contains a safety device(fuse)that should not be removed. Discard product if the attachment plug is damaged.

TROUBLESHOOTING

Operation of your appliance can lead to errors and malfunctions. The following tables contain possible causes and notes for resolving an error message or malfunction. It is recommended to read the table below carefully in order to save your time and money that may cost for calling to the service center.

Problem	Cause	Solution
The machine does not work properly after installed	• Honeycomb filter assembly not properly installed. • The power cable is not plugged in or has poor contact. • The switch on the body is not turned on.	• Reinstall the honeycomb filter assembly. • Make sure the plug is properly inserted into the socket. • Turn on the switch on the body.
The remote does not work	• The battery needs replacing. • The remote is being used more than 5m away from the fan.	• Replace the battery. • Use the remote closer to the fan and make sure it is pointing directly at the control part.

11

13

TRADEMARKS, COPYRIGHTS AND LEGAL STATEMENT

Midea logo, word marks, trade name, trade dress and all versions thereof are valuable assets of Midea Group and/or its affiliates ("Midea"), to which Midea owns trademarks, copyrights and other intellectual property rights, and all goodwill derived from using any part of a Midea trademark. Use of Midea trademark for commercial purposes without the prior written consent of Midea may constitute trademark infringement or unfair competition in violation of relevant laws.

This manual is created by Midea and Midea reserves all copyrights thereof. No entity or individual may use, duplicate, modify, distribute in whole or in part this manual, or bundle or sell with other products without the prior written consent of Midea.

All the described functions and instructions were up to date at the time of printing this manual. However, the actual product may vary due to improved functions and designs.

DATA PROTECTION NOTICE

For the provision of the services agreed with the customer, we agree to comply without restriction with all stipulations of applicable data protection law, in line with agreed countries within which services to the customer will be delivered, as well as, where applicable, the EU General Data Protection Regulation (GDPR).

Generally, our data processing is to fulfil our obligation under contract with you and for product safety reasons, to safeguard your rights in connection with warranty and product registration questions. In some cases, but only if appropriate data protection is ensured, personal data might be transferred to recipients located outside of the European Economic Area.

Further information is provided on request. You can contact our Data Protection Officer via MideaDPO@midea.com. To exercise your rights such as right to object your personal data being processed for direct marketing purposes, please contact us via MideaDPO@midea.com. To find further information, please refer to the GDI Code.