

## **EXHIBIT 10: EXTERNAL PHOTOGRAPHS**

### **SECTION 2.1033 (c) (12)**

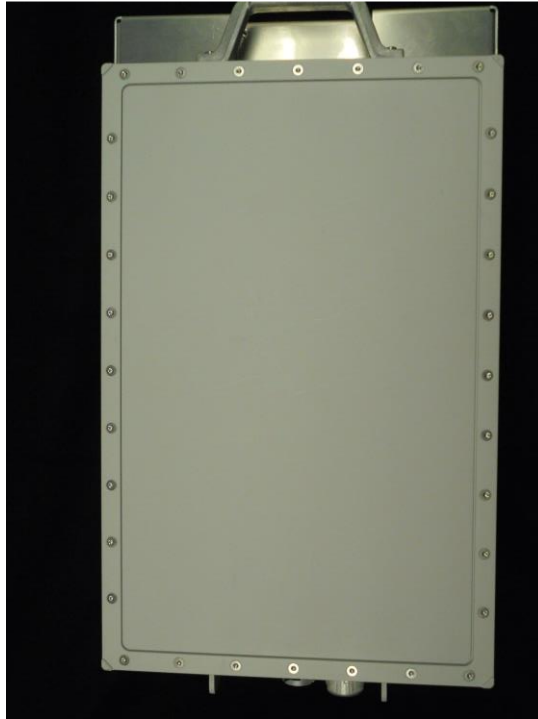
Photographs (8"x10") of the equipment of sufficient clarity to reveal equipment construction and layout, including meters, if any, and labels for controls and meters and sufficient views of the internal construction to define component placement and chassis assembly. Insofar as these requirements are met by photographs or drawings contained in the instruction manuals supplied with the product certification request, additional photographs are necessary only to complete the required showing.

#### **Response:**

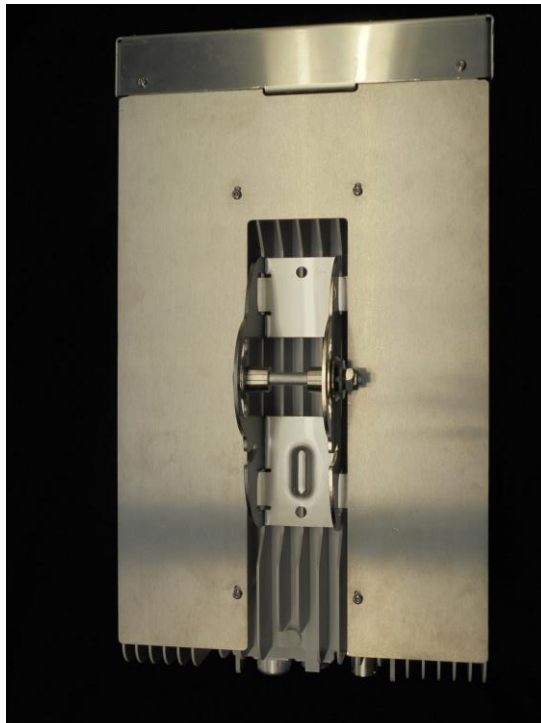
The external photographs of the **Nokia AirScale 39 GHz Radio Unit (AEWF)**,, **FCC ID: VBNAEFW-01** are below.

**Nokia AirScale 39 GHz Radio Unit (AEWF),, FCC ID: VBNAEFW-01**

**Front View**



**Rear View**



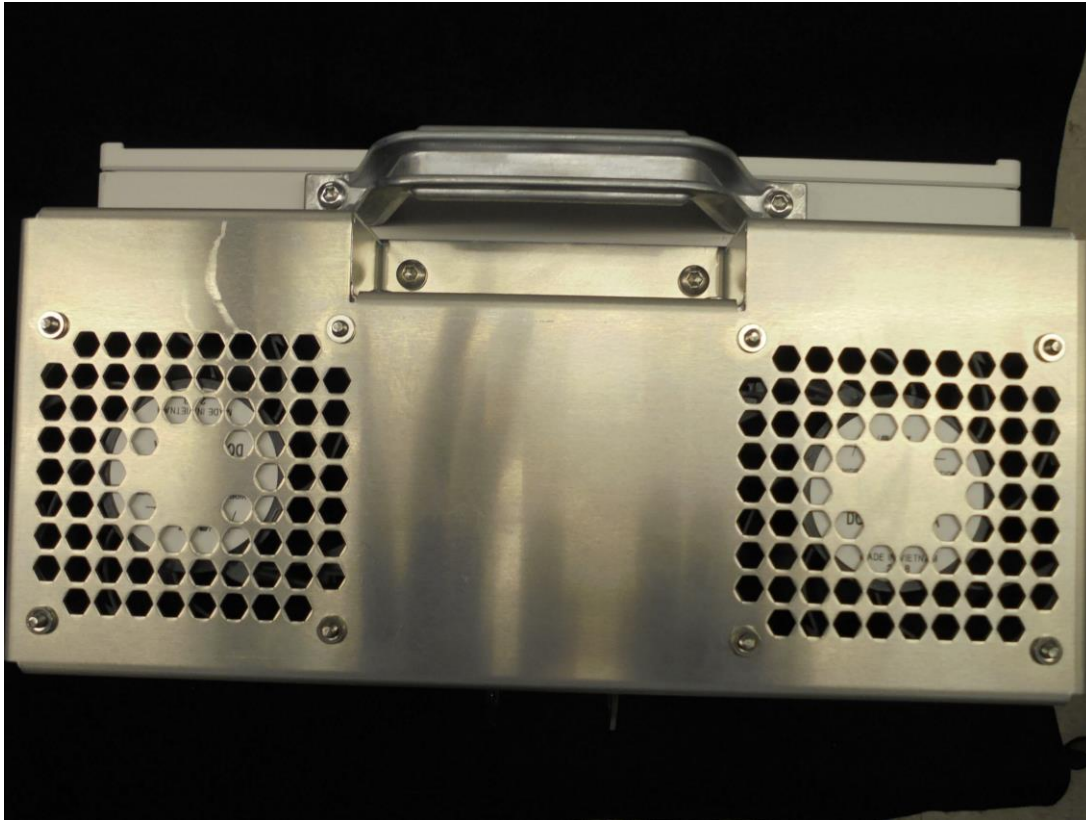
**Left Side**



**Right Side**



## Top View



## Bottom View

