

## System Check\_Head\_835MHz

**DUT:D835V2 - SN:4d091**

Communication System: ; Frequency: 835.0

Medium: HSL. Medium parameters used:  $f= 835.0$  MHz;  $\sigma= 0.902$  S/m;  $\epsilon_r = 41.2$

Ambient Temperature: 23.1°C; Liquid Temperature: 22.6°C

DASY6 Configuration:

- Probe: EX3DV4 - SN7627; ConvF(10.13, 10.02, 10.22); Calibrated: 2023-06-06
- Sensor-Surface: 1.4 mm
- Electronics: DAE4 Sn1338; Calibrated: 2022-12-15
- Phantom: Twin-SAM V8.0 (30deg probe tilt); Serial: 1644
- Measurement Software: cDASY6 V6.6.0.13926

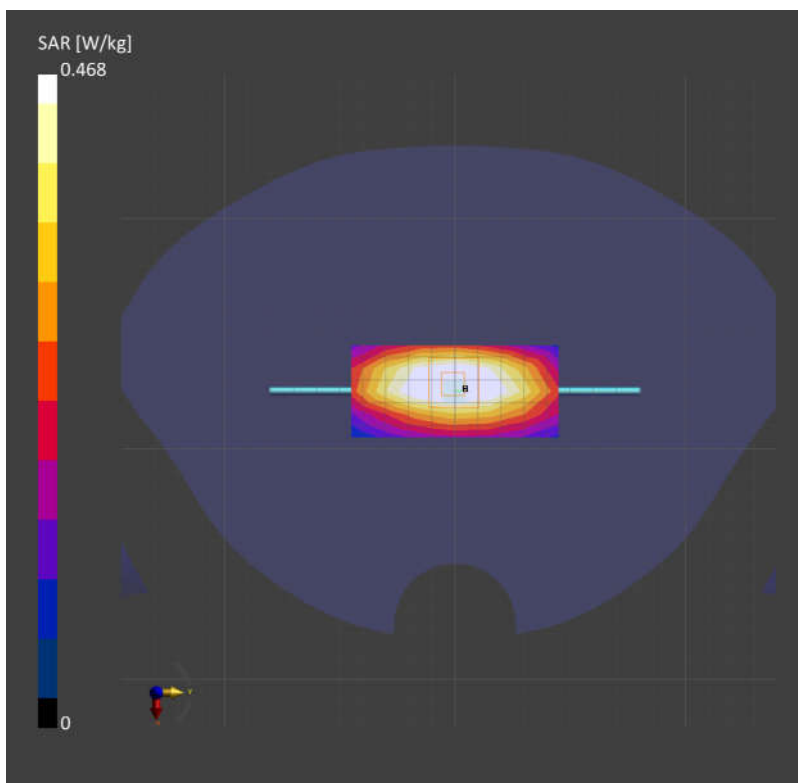
**Area Scan (40.0 mm x 90.0 mm):** Measurement Grid: 15.0 mm x 15.0 mm

SAR (1g) = 0.474 W/kg; SAR (10g) = 0.311 W/kg;

**Zoom Scan (32.0 mm x 32.0 mm x 30.0 mm):** Measurement Grid: 8.0 mm x 8.0 mm x 5.0 mm

Power Drift = 0.01 dB

SAR (1g) = 0.468 W/kg; SAR (10g) = 0.303 W/kg;



## System Check\_Head\_1750MHz

**DUT:D1750V2 - SN:1090**

Communication System: ; Frequency: 1750.0

Medium: HSL. Medium parameters used:  $f= 1750.0$  MHz;  $\sigma= 1.40$  S/m;  $\epsilon_r = 40.8$

Ambient Temperature: 23.3°C; Liquid Temperature: 22.6°C

DASY6 Configuration:

- Probe: EX3DV4 - SN7627; ConvF(8.79, 8.61, 8.89); Calibrated: 2023-06-06
- Sensor-Surface: 1.4 mm
- Electronics: DAE4 Sn1338; Calibrated: 2022-12-15
- Phantom: Twin-SAM V8.0 (30deg probe tilt); Serial: 1644
- Measurement Software: cDASY6 V6.6.0.13926

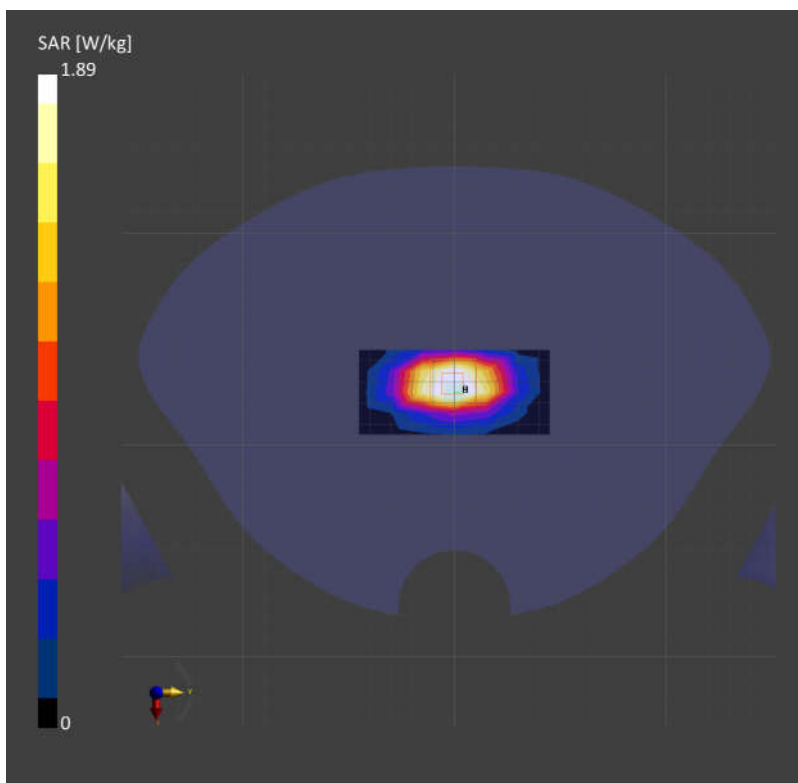
**Area Scan (40.0 mm x 90.0 mm):** Measurement Grid: 15.0 mm x 15.0 mm

SAR (1g) = 1.89 W/kg; SAR (10g) = 1.03 W/kg;

**Zoom Scan (32.0 mm x 32.0 mm x 30.0 mm):** Measurement Grid: 8.0 mm x 8.0 mm x 5.0 mm

Power Drift = -0.03 dB

SAR (1g) = 1.89 W/kg; SAR (10g) = 0.993 W/kg;



## System Check\_Head\_1900MHz

**DUT: D1900V2 - SN:5d118**

Communication System: ; Frequency: 1900.0

Medium: HSL. Medium parameters used:  $f= 1900.0$  MHz;  $\sigma= 1.40$  S/m;  $\epsilon_r = 39.0$

Ambient Temperature: 23.3°C; Liquid Temperature: 22.7°C

DASY6 Configuration:

- Probe: EX3DV4 - SN7627; ConvF(8.41, 8.15, 8.28); Calibrated: 2023-06-06
- Sensor-Surface: 1.4 mm
- Electronics: DAE4 Sn1338; Calibrated: 2022-12-15
- Phantom: Twin-SAM V8.0 (30deg probe tilt); Serial: 1644
- Measurement Software: cDASY6 V6.6.0.13926

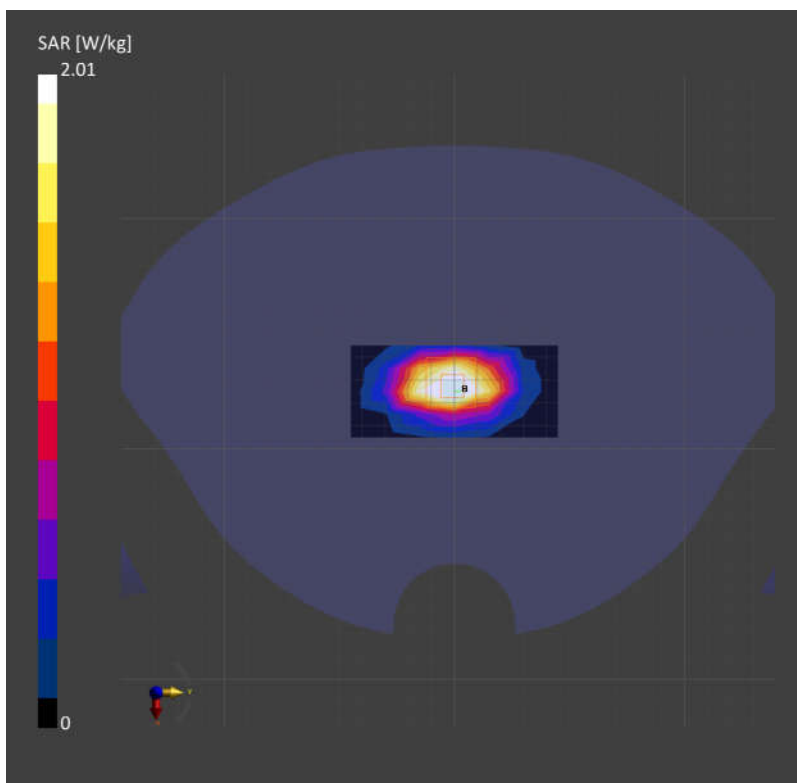
**Area Scan (40.0 mm x 90.0 mm):** Measurement Grid: 15.0 mm x 15.0 mm

SAR (1g) = 2.01 W/kg; SAR (10g) = 1.05 W/kg;

**Zoom Scan (32.0 mm x 32.0 mm x 30.0 mm):** Measurement Grid: 8.0 mm x 8.0 mm x 5.0 mm

Power Drift = 0.01 dB

SAR (1g) = 2.01 W/kg; SAR (10g) = 1.05 W/kg;



## System Check\_Head\_2600MHz

**DUT:D2600V2 - SN:1061**

Communication System: ; Frequency: 2600.0

Medium: HSL. Medium parameters used:  $f= 2600.0$  MHz;  $\sigma= 1.93$  S/m;  $\epsilon_r = 38.2$

Ambient Temperature: 23.2°C; Liquid Temperature: 22.7°C

DASY6 Configuration:

- Probe: EX3DV4 - SN7627; ConvF(7.54, 7.41, 7.52); Calibrated: 2023-06-06
- Sensor-Surface: 1.4 mm
- Electronics: DAE4 Sn1338; Calibrated: 2022-12-15
- Phantom: Twin-SAM V8.0 (30deg probe tilt); Serial: 1644
- Measurement Software: cDASY6 V6.6.0.13926

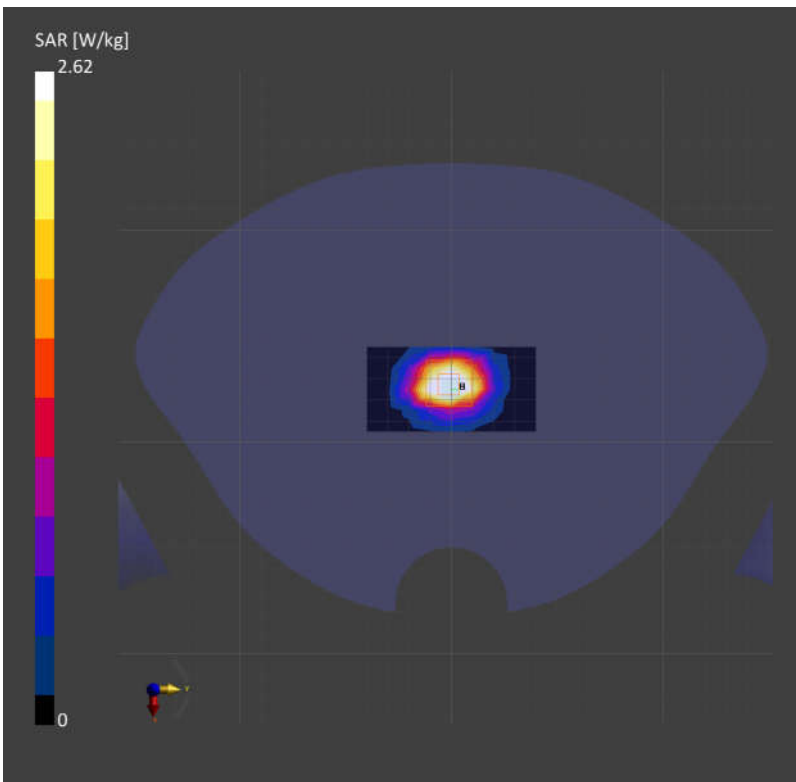
**Area Scan (40.0 mm x 80.0 mm):** Measurement Grid: 12.0 mm x 12.0 mm

SAR (1g) = 2.66 W/kg; SAR (10g) = 1.20 W/kg;

**Zoom Scan (30.0 mm x 30.0 mm x 30.0 mm):** Measurement Grid: 5.0 mm x 5.0 mm x 5.0 mm

Power Drift = 0.01 dB

SAR (1g) = 2.62 W/kg; SAR (10g) = 1.17 W/kg;



## System Check\_Head\_3500MHz

**DUT:D3500V2 - SN:1037**

Communication System: ; Frequency: 3500.0

Medium: HSL. Medium parameters used:  $f= 3500.0$  MHz;  $\sigma= 2.78$  S/m;  $\epsilon_r = 38.9$

Ambient Temperature: 23.3°C; Liquid Temperature: 22.8°C

DASY6 Configuration:

- Probe: EX3DV4 - SN7627; ConvF(7.34, 7.20, 7.31); Calibrated: 2023-06-06
- Sensor-Surface: 1.4 mm
- Electronics: DAE4 Sn1338; Calibrated: 2022-12-15
- Phantom: Twin-SAM V8.0 (30deg probe tilt); Serial: 1644
- Measurement Software: cDASY6 V6.6.0.13926

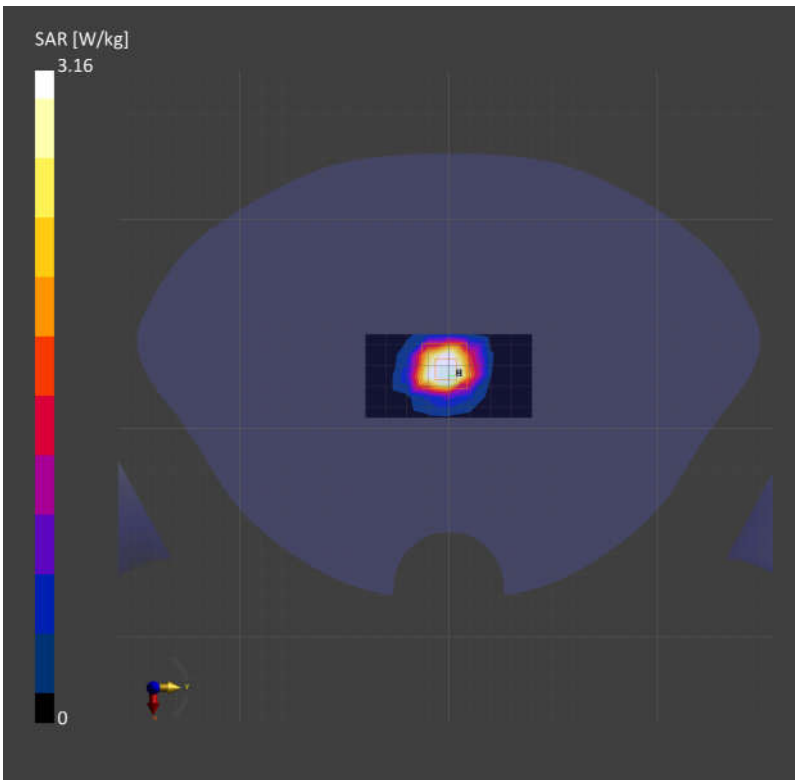
**Area Scan (40.0 mm x 80.0 mm):** Measurement Grid: 10.0 mm x 10.0 mm

SAR (1g) = 2.97 W/kg; SAR (10g) = 1.17 W/kg;

**Zoom Scan (24.0 mm x 24.0 mm x 22.0 mm):** Measurement Grid: 4.0 mm x 4.0 mm x 1.4 mm

Power Drift = -0.03 dB

SAR (1g) = 3.16 W/kg; SAR (10g) = 1.18 W/kg;



## System Check\_Head\_3700MHz

**DUT:D3700V2 - SN:1008**

Communication System: ; Frequency: 3700.0

Medium: HSL. Medium parameters used:  $f= 3700.0$  MHz;  $\sigma= 2.99$  S/m;  $\epsilon_r = 38.7$

Ambient Temperature: 23.2°C; Liquid Temperature: 22.8°C

DASY6 Configuration:

- Probe: EX3DV4 - SN7627; ConvF(7.29, 7.14, 7.26); Calibrated: 2023-06-06
- Sensor-Surface: 1.4 mm
- Electronics: DAE4 Sn1338; Calibrated: 2022-12-15
- Phantom: Twin-SAM V8.0 (30deg probe tilt); Serial: 1644
- Measurement Software: cDASY6 V6.6.0.13926

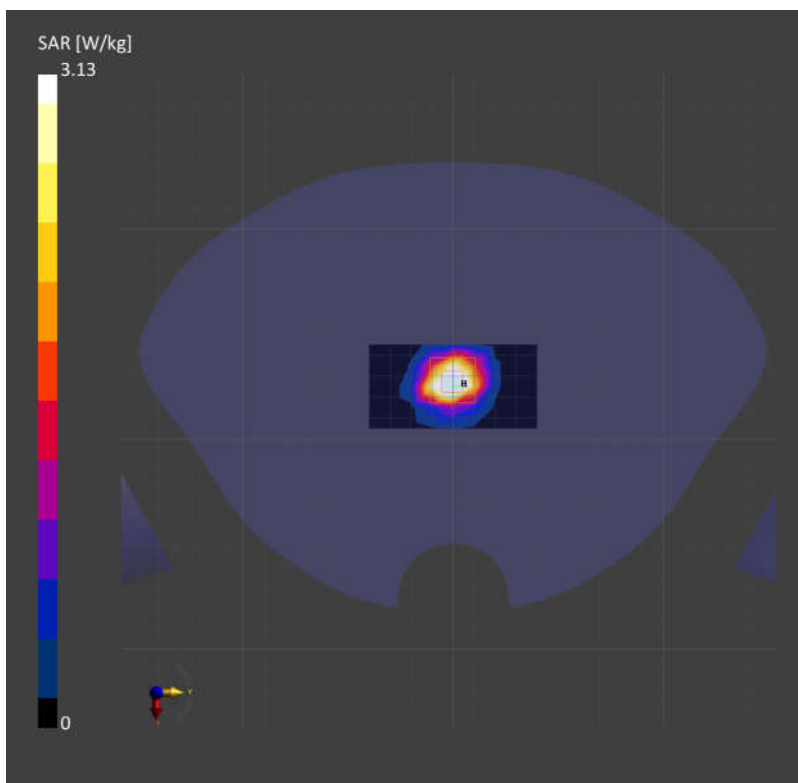
**Area Scan (40.0 mm x 80.0 mm):** Measurement Grid: 10.0 mm x 10.0 mm

SAR (1g) = 3.13 W/kg; SAR (10g) = 1.17 W/kg;

**Zoom Scan (24.0 mm x 24.0 mm x 22.0 mm):** Measurement Grid: 4.0 mm x 4.0 mm x 1.4 mm

Power Drift = -0.01 dB

SAR (1g) = 3.13 W/kg; SAR (10g) = 1.16 W/kg;



## System Check\_Head\_3900MHz

**DUT:D3900V2 - SN:1048**

Communication System: ; Frequency: 3900.0

Medium: HSL. Medium parameters used:  $f= 3900.0$  MHz;  $\sigma= 3.19$  S/m;  $\epsilon_r = 38.4$

Ambient Temperature: 23.4°C; Liquid Temperature: 22.9°C

DASY6 Configuration:

- Probe: EX3DV4 - SN3857; ConvF(6.59, 6.59, 6.59); Calibrated: 2022/12/14
- Sensor-Surface: 1.4 mm
- Electronics: DAE4 Sn1338; Calibrated: 2022-12-15
- Phantom: Twin-SAM V8.0 (30deg probe tilt); Serial: 1644
- Measurement Software: cDASY6 V6.6.0.13926

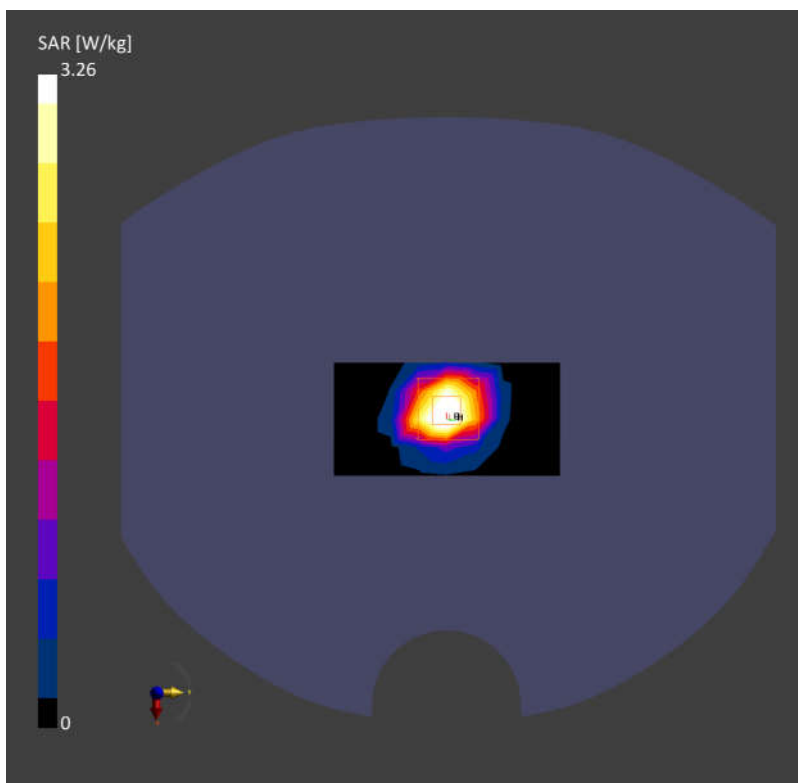
**Area Scan (40.0 mm x 80.0 mm):** Measurement Grid: 10.0 mm x 10.0 mm

SAR (1g) = 2.99 W/kg; SAR (10g) = 1.13 W/kg;

**Zoom Scan (24.0 mm x 24.0 mm x 22.0 mm):** Measurement Grid: 4.0 mm x 4.0 mm x 1.4 mm

Power Drift = -0.02 dB

SAR (1g) = 3.26 W/kg; SAR (10g) = 1.22 W/kg;



## System Check\_Head\_835MHz

**DUT:D835V2 - SN:4d091**

Communication System: ; Frequency: 835.0

Medium: HSL. Medium parameters used:  $f= 835.0$  MHz;  $\sigma= 0.920$  S/m;  $\epsilon_r = 40.6$

Ambient Temperature: 23.3°C; Liquid Temperature: 22.9°C

DASY6 Configuration:

- Probe: EX3DV4 - SN7627; ConvF(10.13, 10.02, 10.22); Calibrated: 2023-06-06
- Sensor-Surface: 1.4 mm
- Electronics: DAE4 Sn1338; Calibrated: 2022-12-15
- Phantom: Twin-SAM V8.0 (30deg probe tilt); Serial: 1644
- Measurement Software: cDASY6 V6.6.0.13926

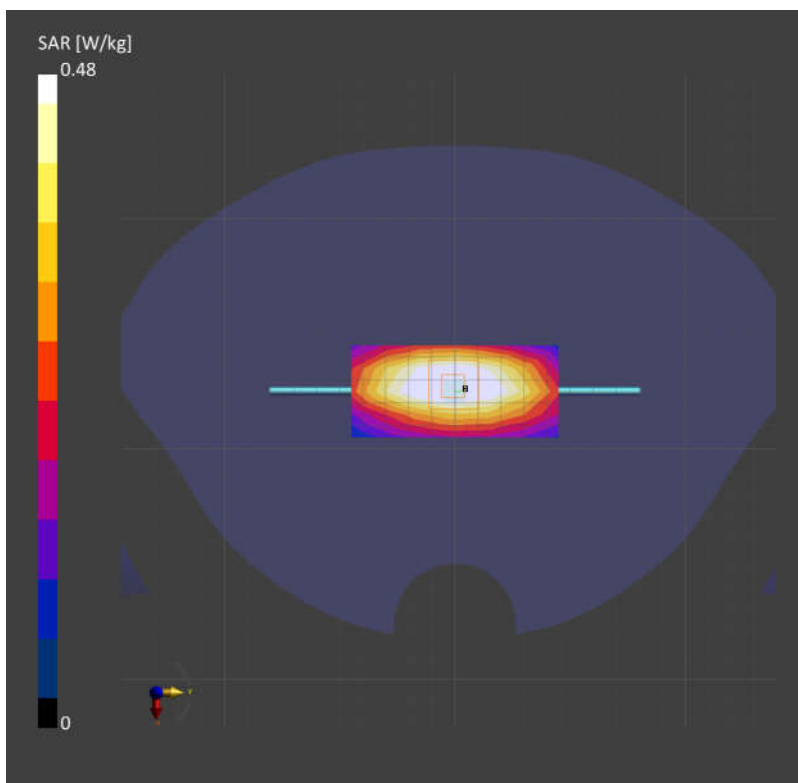
**Area Scan (40.0 mm x 90.0 mm):** Measurement Grid: 15.0 mm x 15.0 mm

SAR (1g) = 0.483 W/kg; SAR (10g) = 0.317 W/kg;

**Zoom Scan (32.0 mm x 32.0 mm x 30.0 mm):** Measurement Grid: 8.0 mm x 8.0 mm x 5.0 mm

Power Drift = 0.01 dB

SAR (1g) = 0.480 W/kg; SAR (10g) = 0.311 W/kg;





## System Check\_Head\_1750MHz

**DUT:D1750V2 - SN:1090**

Communication System: ; Frequency: 1750.0

Medium: HSL. Medium parameters used:  $f= 1750.0$  MHz;  $\sigma= 1.39$  S/m;  $\epsilon_r = 38.5$

Ambient Temperature: 23.2°C; Liquid Temperature: 22.6°C

DASY6 Configuration:

- Probe: EX3DV4 - SN7627; ConvF(8.79, 8.61, 8.89); Calibrated: 2023-06-06
- Sensor-Surface: 1.4 mm
- Electronics: DAE4 Sn1338; Calibrated: 2022-12-15
- Phantom: Twin-SAM V8.0 (30deg probe tilt); Serial: 1644
- Measurement Software: cDASY6 V6.6.0.13926

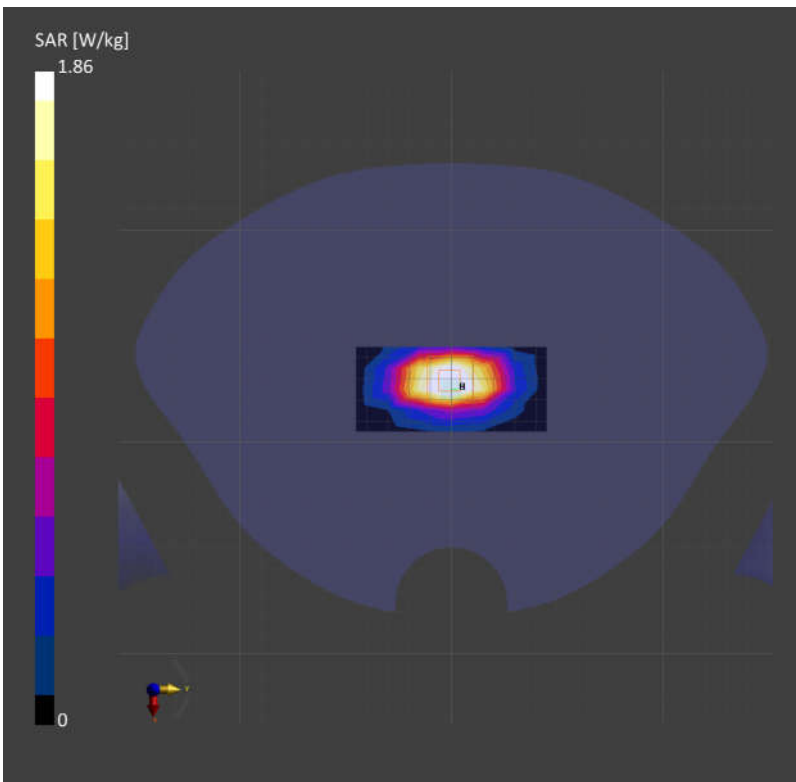
**Area Scan (40.0 mm x 90.0 mm):** Measurement Grid: 15.0 mm x 15.0 mm

SAR (1g) = 1.89 W/kg; SAR (10g) = 1.03 W/kg;

**Zoom Scan (32.0 mm x 32.0 mm x 30.0 mm):** Measurement Grid: 8.0 mm x 8.0 mm x 5.0 mm

Power Drift = -0.01 dB

SAR (1g) = 1.86 W/kg; SAR (10g) = 0.980 W/kg;



## System Check\_Head\_1900MHz

**DUT:D1900V2 - SN:5d118**

Communication System: ; Frequency: 1900.0

Medium: HSL. Medium parameters used:  $f= 1900.0$  MHz;  $\sigma= 1.45$  S/m;  $\epsilon_r = 39.9$

Ambient Temperature: 23.1°C; Liquid Temperature: 22.8°C

DASY6 Configuration:

- Probe: EX3DV4 - SN7627; ConvF(8.41, 8.15, 8.28); Calibrated: 2023-06-06
- Sensor-Surface: 1.4 mm
- Electronics: DAE4 Sn1338; Calibrated: 2022-12-15
- Phantom: Twin-SAM V8.0 (30deg probe tilt); Serial: 1644
- Measurement Software: cDASY6 V6.6.0.13926

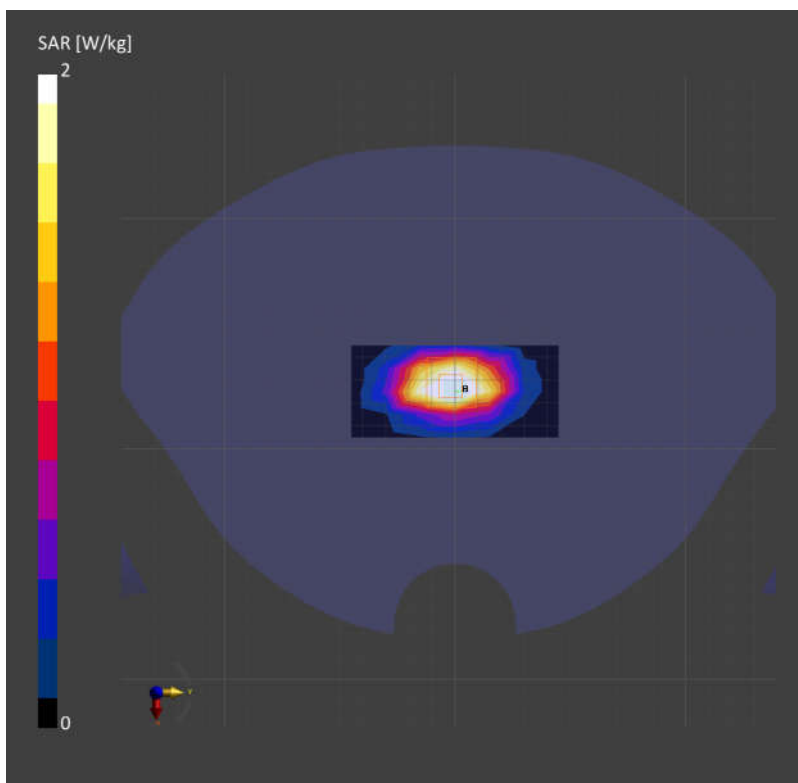
**Area Scan (40.0 mm x 90.0 mm):** Measurement Grid: 15.0 mm x 15.0 mm

SAR (1g) = 2.02 W/kg; SAR (10g) = 1.05 W/kg;

**Zoom Scan (32.0 mm x 32.0 mm x 30.0 mm):** Measurement Grid: 8.0 mm x 8.0 mm x 5.0 mm

Power Drift = 0.04 dB

SAR (1g) = 2.00 W/kg; SAR (10g) = 1.06 W/kg;



## System Check\_Head\_2600MHz

**DUT:D2600V2 - SN:1061**

Communication System: ; Frequency: 2600.0

Medium: HSL. Medium parameters used:  $f= 2600.0$  MHz;  $\sigma= 1.93$  S/m;  $\epsilon_r = 37.3$

Ambient Temperature: 23.3°C; Liquid Temperature: 22.7°C

DASY6 Configuration:

- Probe: EX3DV4 - SN7627; ConvF(7.54, 7.41, 7.52); Calibrated: 2023-06-06
- Sensor-Surface: 1.4 mm
- Electronics: DAE4 Sn1338; Calibrated: 2022-12-15
- Phantom: Twin-SAM V8.0 (30deg probe tilt); Serial: 1644
- Measurement Software: cDASY6 V6.6.0.13926

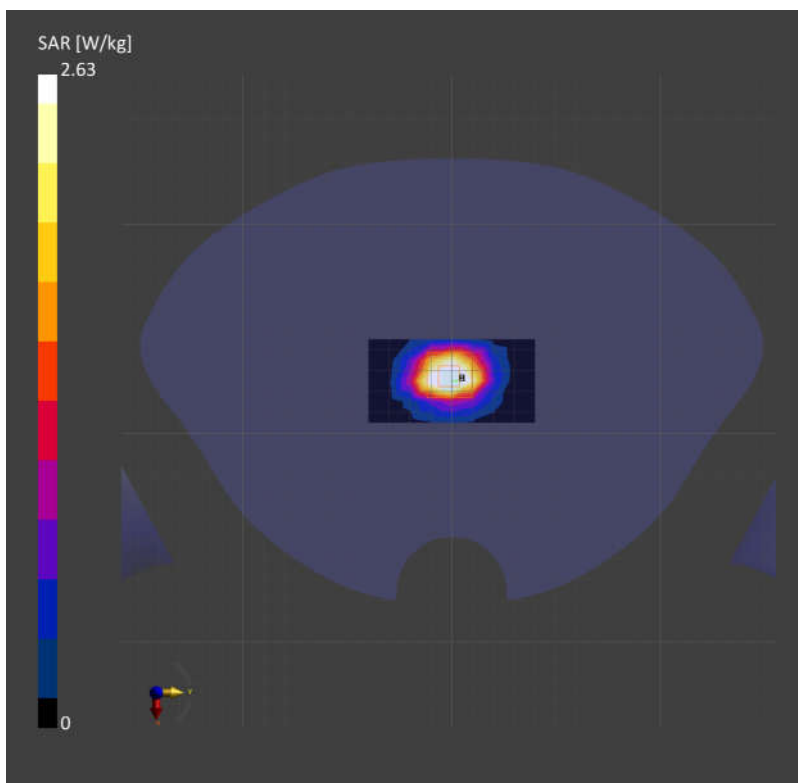
**Area Scan (40.0 mm x 80.0 mm):** Measurement Grid: 12.0 mm x 12.0 mm

SAR (1g) = 2.67 W/kg; SAR (10g) = 1.21 W/kg;

**Zoom Scan (30.0 mm x 30.0 mm x 30.0 mm):** Measurement Grid: 5.0 mm x 5.0 mm x 5.0 mm

Power Drift = 0.06 dB

SAR (1g) = 2.63 W/kg; SAR (10g) = 1.18 W/kg;



## System Check\_Head\_3500MHz

**DUT:D3500V2 - SN:1037**

Communication System: ; Frequency: 3500.0

Medium: HSL. Medium parameters used:  $f= 3500.0$  MHz;  $\sigma= 2.79$  S/m;  $\epsilon_r = 39.6$

Ambient Temperature: 23.2°C; Liquid Temperature: 22.6°C

DASY6 Configuration:

- Probe: EX3DV4 - SN7627; ConvF(7.34, 7.20, 7.31); Calibrated: 2023-06-06
- Sensor-Surface: 1.4 mm
- Electronics: DAE4 Sn1338; Calibrated: 2022-12-15
- Phantom: Twin-SAM V8.0 (30deg probe tilt); Serial: 1644
- Measurement Software: cDASY6 V6.6.0.13926

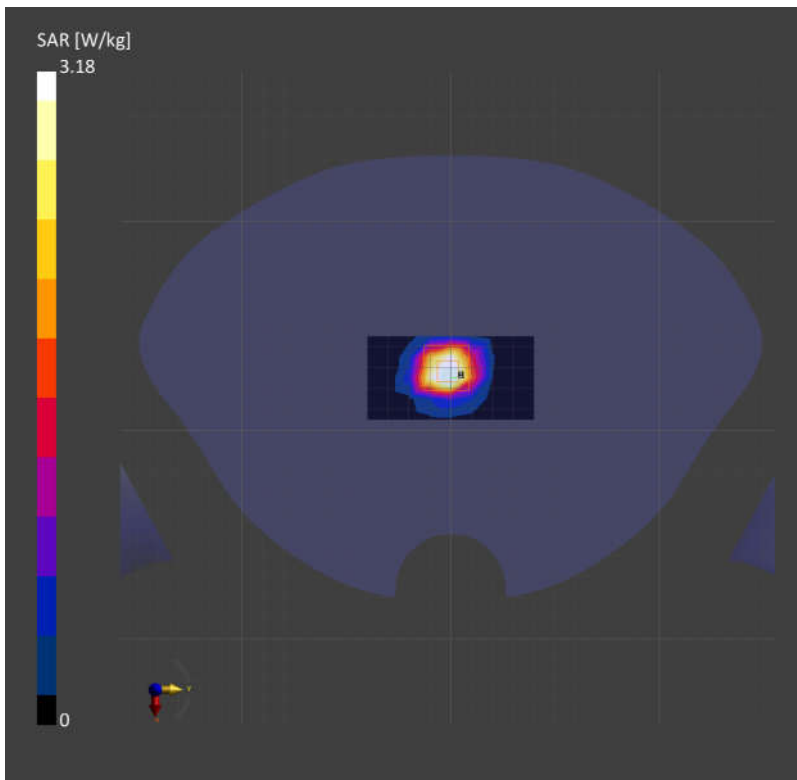
**Area Scan (40.0 mm x 80.0 mm):** Measurement Grid: 10.0 mm x 10.0 mm

SAR (1g) = 3.09 W/kg; SAR (10g) = 1.18 W/kg;

**Zoom Scan (24.0 mm x 24.0 mm x 22.0 mm):** Measurement Grid: 4.0 mm x 4.0 mm x 1.4 mm

Power Drift = -0.01 dB

SAR (1g) = 3.18 W/kg; SAR (10g) = 1.21 W/kg;



## System Check\_Head\_3700MHz

**DUT:D3700V2 - SN:1008**

Communication System: ; Frequency: 3700.0

Medium: HSL. Medium parameters used:  $f= 3700.0$  MHz;  $\sigma= 2.99$  S/m;  $\epsilon_r = 38.4$

Ambient Temperature: 23.3°C; Liquid Temperature: 22.8°C

DASY6 Configuration:

- Probe: EX3DV4 - SN7627; ConvF(7.29, 7.14, 7.26); Calibrated: 2023-06-06
- Sensor-Surface: 1.4 mm
- Electronics: DAE4 Sn1338; Calibrated: 2022-12-15
- Phantom: Twin-SAM V8.0 (30deg probe tilt); Serial: 1644
- Measurement Software: cDASY6 V6.6.0.13926

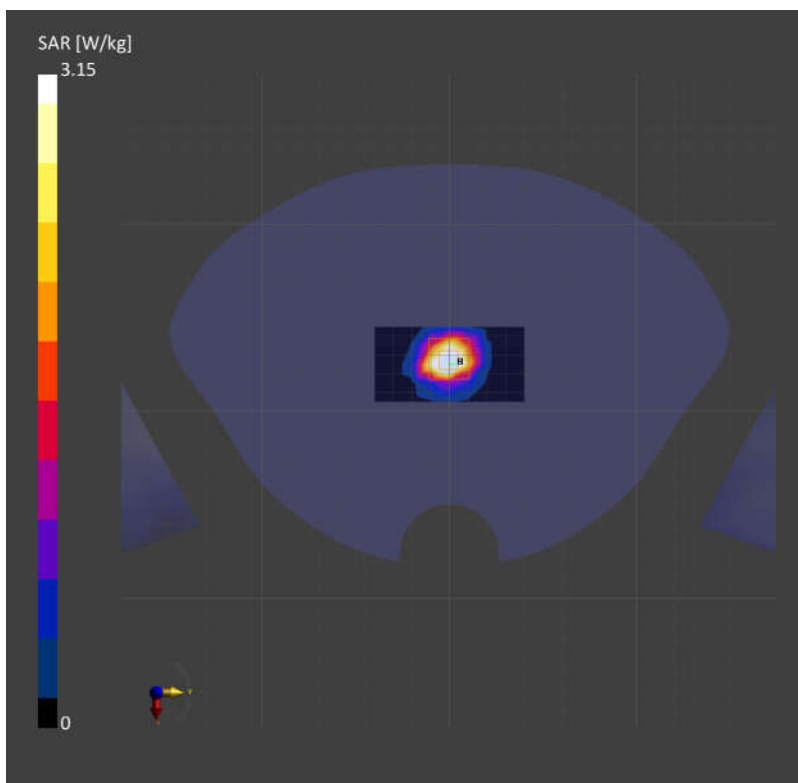
**Area Scan (40.0 mm x 80.0 mm):** Measurement Grid: 10.0 mm x 10.0 mm

SAR (1g) = 3.11 W/kg; SAR (10g) = 1.17 W/kg;

**Zoom Scan (24.0 mm x 24.0 mm x 22.0 mm):** Measurement Grid: 4.0 mm x 4.0 mm x 1.4 mm

Power Drift = 0.02 dB

SAR (1g) = 3.15 W/kg; SAR (10g) = 1.18 W/kg;



## System Check\_Head\_3900MHz

**DUT:D3900V2 - SN:1048**

Communication System: ; Frequency: 3900.0

Medium: HSL. Medium parameters used:  $f= 3900.0$  MHz;  $\sigma= 3.19$  S/m;  $\epsilon_r = 38.4$

Ambient Temperature: 23.2°C; Liquid Temperature: 22.7°C

DASY6 Configuration:

- Probe: EX3DV4 - SN3857; ConvF(6.59, 6.59, 6.59); Calibrated: 2022/12/14
- Sensor-Surface: 1.4 mm
- Electronics: DAE4 Sn1338; Calibrated: 2022-12-15
- Phantom: Twin-SAM V8.0 (30deg probe tilt); Serial: 1644
- Measurement Software: cDASY6 V6.6.0.13926

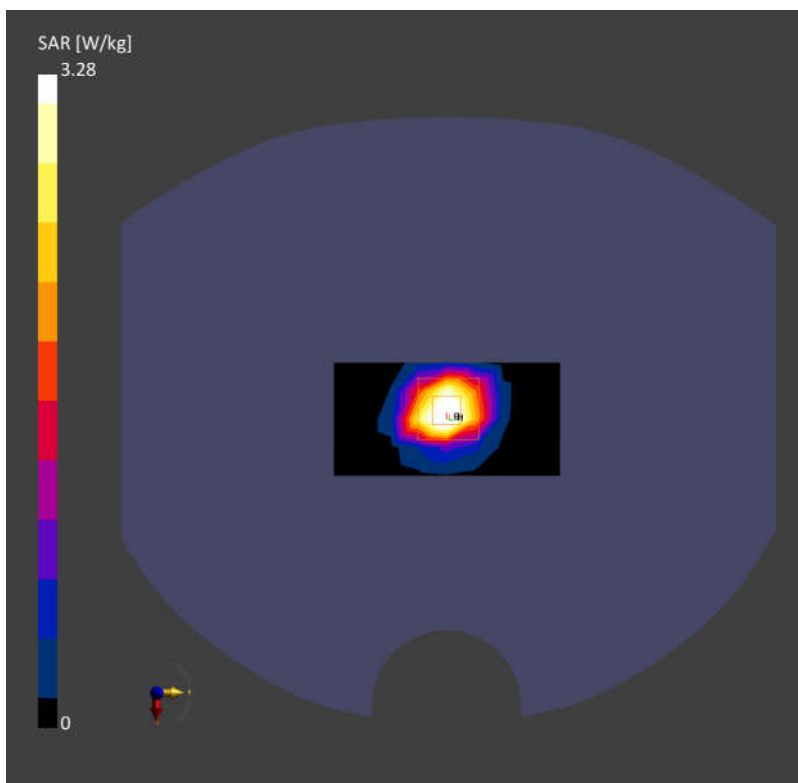
**Area Scan (40.0 mm x 80.0 mm):** Measurement Grid: 10.0 mm x 10.0 mm

SAR (1g) = 3.10 W/kg; SAR (10g) = 1.14 W/kg;

**Zoom Scan (24.0 mm x 24.0 mm x 22.0 mm):** Measurement Grid: 4.0 mm x 4.0 mm x 1.4 mm

Power Drift = -0.01 dB

SAR (1g) = 3.28 W/kg; SAR (10g) = 1.20 W/kg;



## System Check\_Head\_2450MHz

**DUT:D2450V2 - SN:1040**

Communication System: ; Frequency: 2450.0

Medium: HSL. Medium parameters used:  $f= 2450.0$  MHz;  $\sigma= 1.83$  S/m;  $\epsilon_r = 37.5$

Ambient Temperature: 23.2°C; Liquid Temperature: 22.7°C

DASY6 Configuration:

- Probe: EX3DV4 - SN7627; ConvF(7.66, 7.57, 7.66); Calibrated: 2023-06-06
- Sensor-Surface: 1.4 mm
- Electronics: DAE4 Sn1338; Calibrated: 2022-12-15
- Phantom: Twin-SAM V8.0 (30deg probe tilt); Serial: 1644
- Measurement Software: cDASY6 V6.6.0.13926

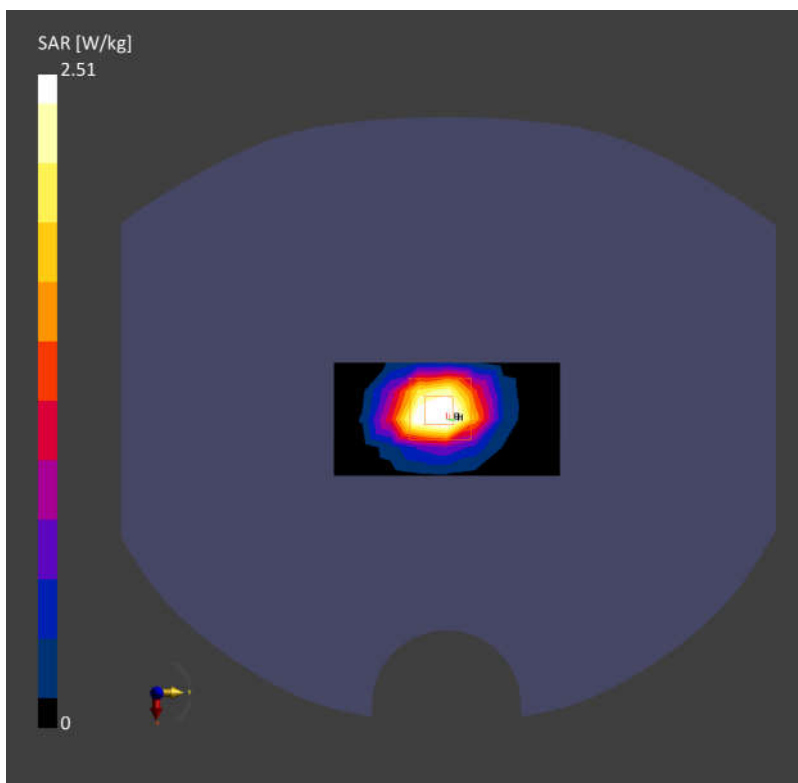
**Area Scan (40.0 mm x 80.0 mm):** Measurement Grid: 10.0 mm x 10.0 mm

SAR (1g) = 2.40 W/kg; SAR (10g) = 1.11 W/kg;

**Zoom Scan (30.0 mm x 30.0 mm x 30.0 mm):** Measurement Grid: 5.0 mm x 5.0 mm x 5.0 mm

Power Drift = 0.01 dB

SAR (1g) = 2.51 W/kg; SAR (10g) = 1.16 W/kg;



## System Check\_Head\_5250MHz

**DUT: D5GHzV2 - SN:1113**

Communication System: ; Frequency: 5250.0

Medium: HSL. Medium parameters used:  $f= 5250.0$  MHz;  $\sigma= 4.60$  S/m;  $\epsilon_r = 35.9$

Ambient Temperature: 23.3°C; Liquid Temperature: 22.7°C

DASY6 Configuration:

- Probe: EX3DV4 - SN7627; ConvF(6.05, 5.94, 5.93); Calibrated: 2023-06-06
- Sensor-Surface: 1.4 mm
- Electronics: DAE4 Sn1338; Calibrated: 2022-12-15
- Phantom: Twin-SAM V8.0 (30deg probe tilt); Serial: 1644
- Measurement Software: cDASY6 V6.6.0.13926

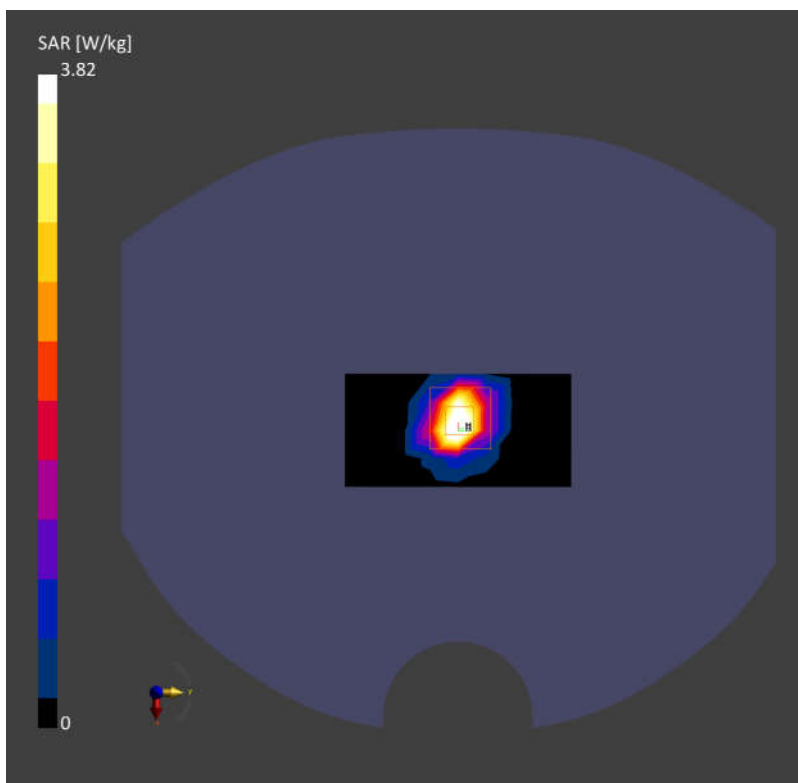
**Area Scan (40.0 mm x 80.0 mm):** Measurement Grid: 10.0 mm x 10.0 mm

SAR (1g) = 3.28 W/kg; SAR (10g) = 0.995 W/kg;

**Zoom Scan (24.0 mm x 24.0 mm x 22.0 mm):** Measurement Grid: 4.0 mm x 4.0 mm x 1.4 mm

Power Drift = 0.02 dB

SAR (1g) = 3.82 W/kg; SAR (10g) = 1.09 W/kg;





## System Check\_Head\_5600MHz

### DUT: D5GHzV2 - SN:1113

Communication System: ; Frequency: 5600.0

Medium: HSL. Medium parameters used:  $f= 5600.0$  MHz;  $\sigma= 5.00$  S/m;  $\epsilon_r = 35.3$

Ambient Temperature: 23.3°C; Liquid Temperature: 22.8°C

#### DASY6 Configuration:

- Probe: EX3DV4 - SN7627; ConvF(5.24, 5.12, 5.19); Calibrated: 2023-06-06
- Sensor-Surface: 1.4 mm
- Electronics: DAE4 Sn1338; Calibrated: 2022-12-15
- Phantom: Twin-SAM V8.0 (30deg probe tilt); Serial: 1644
- Measurement Software: cDASY6 V6.6.0.13926

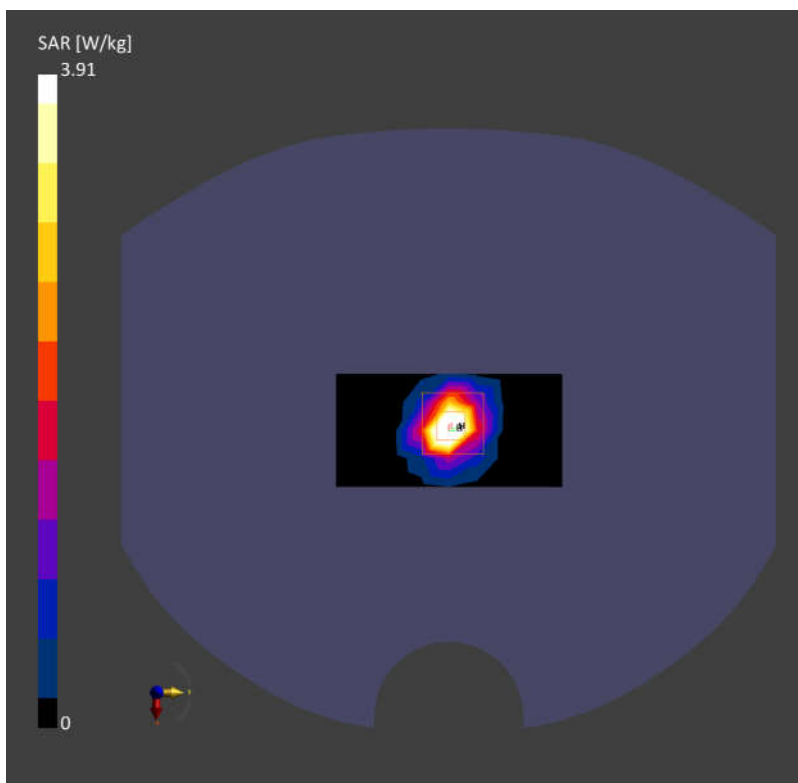
**Area Scan (40.0 mm x 80.0 mm):** Measurement Grid: 10.0 mm x 10.0 mm

SAR (1g) = 3.68 W/kg; SAR (10g) = 1.04 W/kg;

**Zoom Scan (24.0 mm x 24.0 mm x 22.0 mm):** Measurement Grid: 4.0 mm x 4.0 mm x 1.4 mm

Power Drift = -0.02 dB

SAR (1g) = 3.91 W/kg; SAR (10g) = 1.11 W/kg;



## System Check\_Head\_5750MHz

**DUT: D5GHzV2 - SN:1113**

Communication System: ; Frequency: 5750.0

Medium: HSL. Medium parameters used:  $f= 5750.0$  MHz;  $\sigma= 5.17$  S/m;  $\epsilon_r = 35.1$

Ambient Temperature: 23.2°C; Liquid Temperature: 22.8°C

DASY6 Configuration:

- Probe: EX3DV4 - SN7627; ConvF(5.34, 5.2, 5.26); Calibrated: 2023-06-06
- Sensor-Surface: 1.4 mm
- Electronics: DAE4 Sn1338; Calibrated: 2022-12-15
- Phantom: Twin-SAM V8.0 (30deg probe tilt); Serial: 1644
- Measurement Software: cDASY6 V6.6.0.13926

**Area Scan (40.0 mm x 80.0 mm):** Measurement Grid: 10.0 mm x 10.0 mm

SAR (1g) = 3.22 W/kg; SAR (10g) = 0.973 W/kg;

**Zoom Scan (24.0 mm x 24.0 mm x 22.0 mm):** Measurement Grid: 4.0 mm x 4.0 mm x 1.4 mm

Power Drift = 0.01 dB

SAR (1g) = 3.98 W/kg; SAR (10g) = 1.15 W/kg;

