

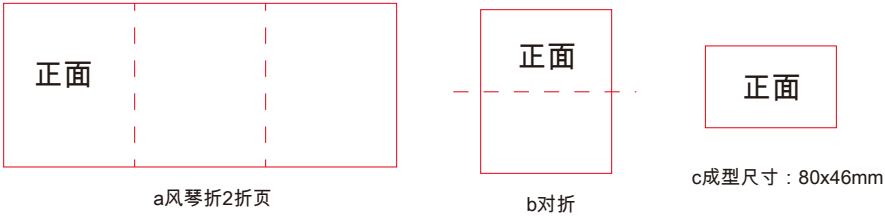
ERP机型：SD3702Q-GL-SMT00030A-V1 ERP P/N:

描述: 安装操作说明：SD3702Q/PGA383, STM000, REV.A, 240x92mm, 80G书纸，
双面单黑印刷，三折页，ROHS2.0,REACH,POPs,PAHS,PROP65,

K Die Line

Designed : Walter

Date : 2022-05-07



LOCKLY GUARD™

WWW.LOCKLYPRO.COM

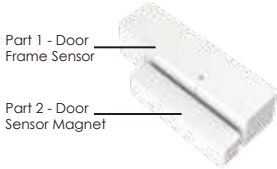
WIRELESS DOOR SENSOR (PGA383)

Installation & User Manual

Lockly door sensor is based on bidirectional RF433.92MHz and Lockly 2.0 proprietary encryption, providing communication reliability, stability, and better security.

It is simple and very easy to install anywhere and it only uses AAA battery for long and optimal operation. Door Sensor can provide the ability to verify that your door is securely closed and not ajar. It also sends push notifications to your phone whenever the door unlocks or locked.

The Door Sensor comes in two parts. Depending on your door orientation, the door sensor will be mounted in different ways.



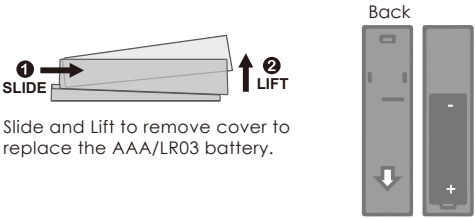
Preparation

Make sure you install the Door Sensor indoors on a clean and dry surface. Gently wipe the surface of your door and door frame where you wish to install the Door Sensor and make sure it's dry before installing. DO NOT INSTALL YET.

When installed on your door, the distance between the Door Sensor and the Door Frame Sensor must be less than 3/4" in order for the sensor to work.

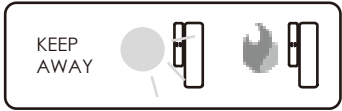
Install the battery

Open the door sensor as shown, put in 1 AAA battery, please pay attention to the positive and negative poles of the battery.



Slide and Lift to remove cover to replace the AAA/LR03 battery.

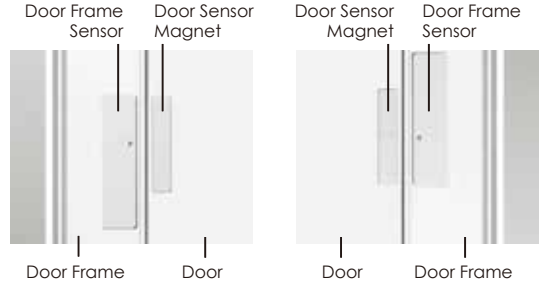
Keep the Door Sensor away from direct sunlight, high heat locations and large metal objects that may interfere with wireless signals.



The optimal location to install the Door Sensor is on the upper corners of your door, away from the reach of children and pets.

WHEN FACING YOUR DOOR FROM THE INSIDE, DOOR HINGES ARE ON THE RIGHT SIDE

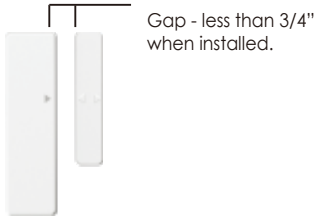
WHEN FACING YOUR DOOR FROM THE INSIDE, DOOR HINGES ARE ON THE LEFT SIDE



When you are installing the Door Sensor, make sure the arrows on the Door Sensor is placed next to the arrow from the Door Frame Sensor.



When installed on your door, the distance between the Door Sensor and the Door Frame Sensor must be less than 3/4" in order for the sensor to work.



IMPORTANT

- Do not allow the battery to corrode or leak as this may cause permanent damage to the product.
- Make sure to insert battery on correct polarity as shown inside the battery compartments.
- Do not use rechargeable batteries.
- When battery is drained, do not dispose with normal household waste. Dispose via suitable recycling center. DO NOT BURN

WARNING: This product can expose you to chemicals including Lead, which is known to the State of California to cause cancer. For more information go to www.P65Warnings.ca.gov.

FCC Warning :

This device complies with Part 15 of the FCC Rules. Operation is subject to the following two conditions: (1) This device may not cause harmful interference, and (2) this device must accept any interference received, including interference that may cause undesired operation.

- NOTE 1:** This equipment has been tested and found to comply with the limits for a Class B digital device, pursuant to part 15 of the FCC Rules. These limits are designed to provide reasonable protection against harmful interference in a residential installation. This equipment generates, uses and can radiate radio frequency energy and, if not installed and used in accordance with the instructions, may cause harmful interference to radio communications. However, there is no guarantee that interference will not occur in a particular installation. If this equipment does cause harmful interference to radio or television reception, which can be determined by turning the equipment off and on, the user is encouraged to try to correct the interference by one or more of the following measures:
- Reorient or relocate the receiving antenna.
 - Increase the separation between the equipment and receiver.
 - Connect the equipment into an outlet on a circuit different from that to which the receiver is connected.
 - Consult the dealer or an experienced radio/TV technician for help.

NOTE 2: Any changes or modifications to this unit not expressly approved by the party responsible for compliance could void the user's authority to operate the equipment.

FCC Radiation Exposure Statement

The Secure Link Wi-Fi Hub complies with FCC radiation exposure limits set forth for an uncontrolled environment. It should be installed and operated with minimum distance 20cm between the radiator & your body.

IC WARNING

This device contains licence-exempt transmitter(s) that comply with Innovation, Science and Economic Development Canada's licence-exempt RSS(s).

Operation is subject to the following two conditions:

- (1) This device may not cause interference.
- (2) This device must accept any interference, including interference that may cause undesired operation of the device.

L'émetteur/récepteur exempt de licence contenu dans le présent appareil est conforme aux CNR d'Innovation, Sciences et Développement économique Canada applicables aux appareils radio exempts de licence. L'exploitation est autorisée aux deux conditions suivantes:

1. L'appareil ne doit pas produire de brouillage;
2. L'appareil doit accepter tout brouillage radioélectrique subi, même si le brouillage est susceptible d'en compromettre le fonctionnement.

IC Radiation Exposure Statement

This equipment meets the exemption from the routine evaluation limits in section 2.5 of RSS-102. It should be installed and operated with a minimum distance of 20cm between the radiator and any part of your body.

Cet équipement est conforme à l'exemption des limites d'évaluation habituelle de la section 2.5 de la norme RSS-102. Il doit être installé et utilisé à une distance minimale de 20 cm entre le radiateur et toute partie de votre corps.