

Description:

WIFI ANT1



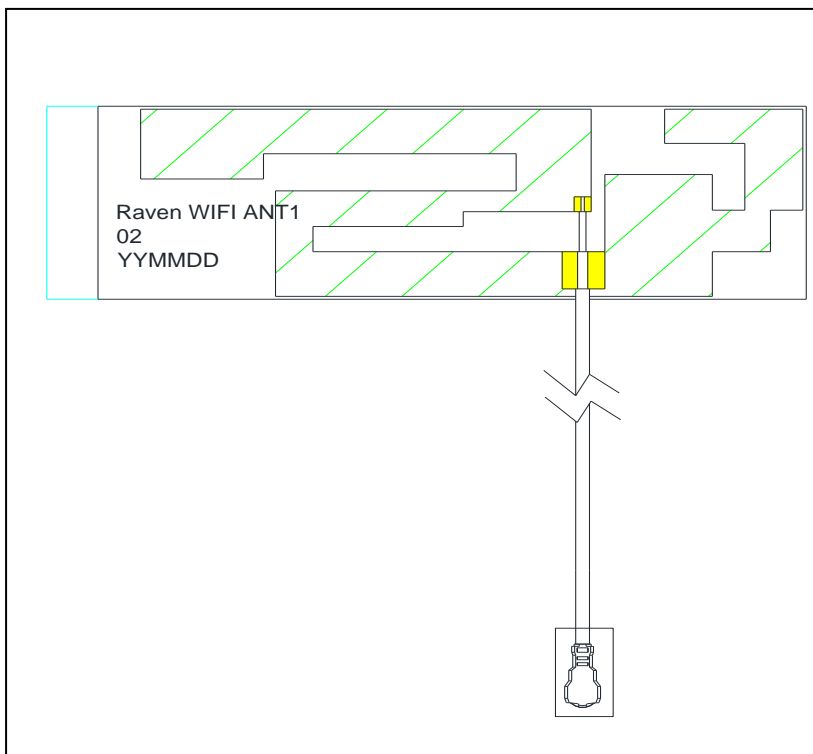
Series: Raven

Altek P/N: 117-0108-001

PULSE P/N: TZ2530W

Features:

- WLAN antenna
- FPC
- 0.81mm LLS cable with IPEX4代
- RoHS Compliant



Applications:

- AI CAM

In the effort to improve our products, we reserve the right to make changes judged to be necessary.

CONFIDENTIAL AND PROPRIETARY INFORMATION

This document contains confidential and proprietary information of Pulse Electronics, Inc. (Pulse) and is protected by copyright, trade secret and other state and federal laws. Its receipt or possession does not convey any rights to reproduce, disclose its contents, or to manufacture, use or sell anything it may describe. Reproduction, disclosure or use without specific written authorization of Pulse is strictly forbidden.

For more information:

Pulse Worldwide Headquarters
 15255 Innovation Drive #100
 San Diego, CA 92128
 USA
 Tel: 1-858-674-8100

Pulse/Larsen Antennas
 18110 SE 34th St Bldg 2 Suite 250
 Vancouver, WA 98683
 USA
 Tel: 1-360-944-7551

Europe Headquarters
 Pulse GmbH & Co, KG
 Zeppelinstrasse 15
 Herrenberg, Germany
 Tel: 49 7032 7806 0

Pulse (Suzhou) Wireless Products Co, Inc.
 99 Huo Ju Road(#29 Bldg, 4th Phase
 Suzhou New District
 Jiangsu Province, Suzhou 215009 PR China
 Tel: 86 512 6807 9998



Series: Raven**Altek P/N:** 117-0108-001**PULSE P/N:** TZ2530W**ELECTRICAL SPECIFICATIONS**

Antenna Type	FPC PIFA
Frequency	2.4-2.5 GHz 5.15-5.85 GHz
Nominal Impedance	50 Ω
Radiation Pattern	Omni
Gain	Refer to below table
Polarization	Linear
Power Withstanding	1W

MECHANICAL SPECIFICATIONS

Overall Length	41.5*13*0.15mm
Antenna Color / Material	See table, P3
Connector type	See table, P3
Cable type	See table, P3
Cable length	See table, P3
Adhesive tape	Tesa68532

ENVIRONMENTAL SPECIFICATIONS

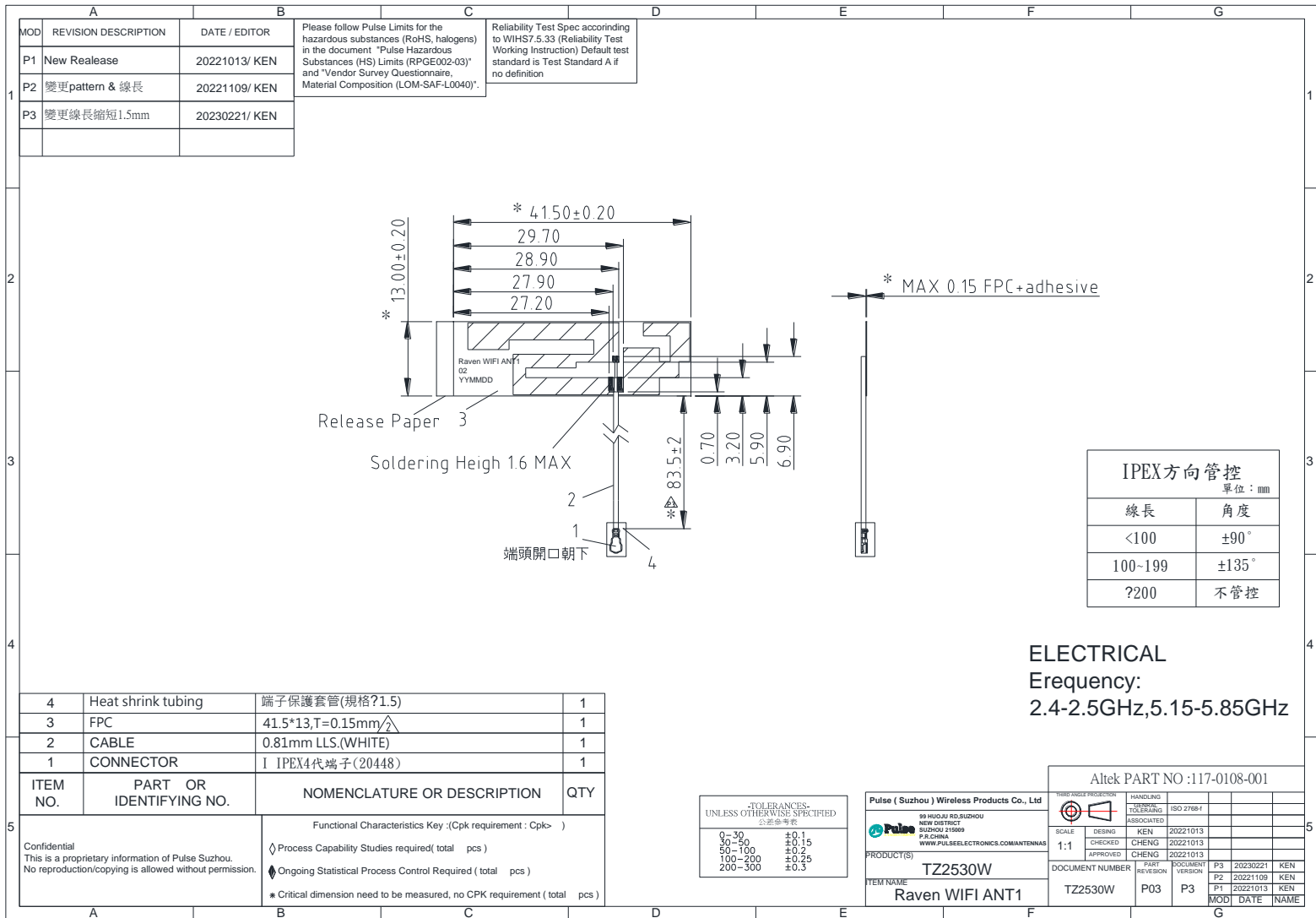
Operating Temperature	-40 ~ +85°C
Storage Temperature	-40 ~ +85°C
RoHS Compliant	Yes

Series: Raven

Altek P/N: 117-0108-001

PULSE P/N: TZ2530W

MECHANICAL DRAWING



Description:
WIFI ANT1



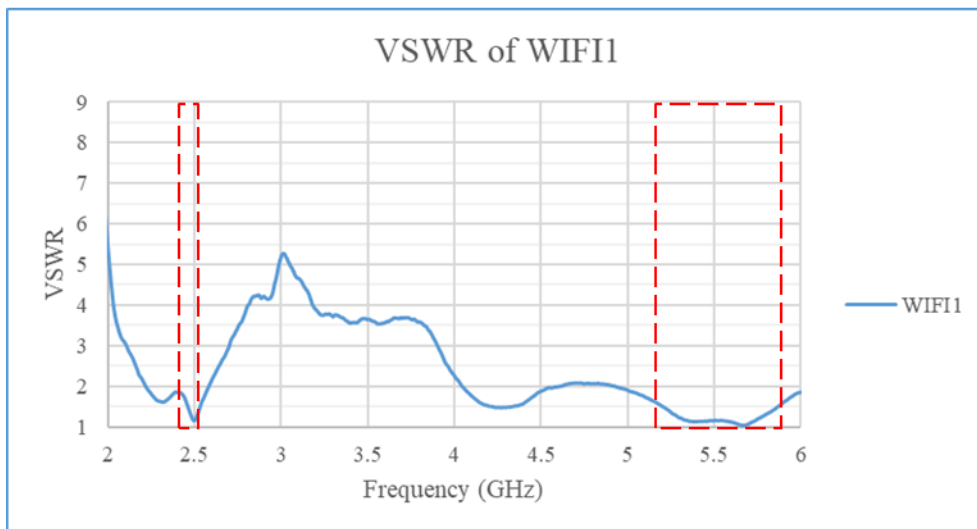
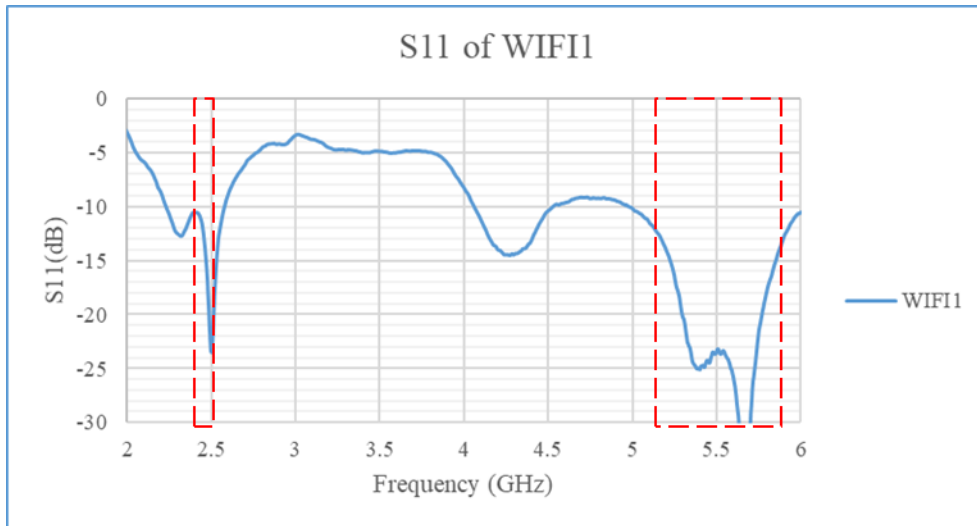
Series: Raven

Altek P/N: 117-0108-001

PULSE P/N: TZ2530W

TEST SETUP

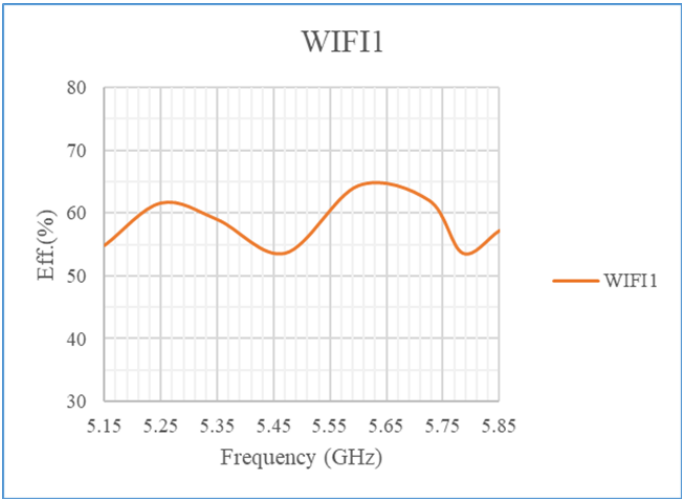
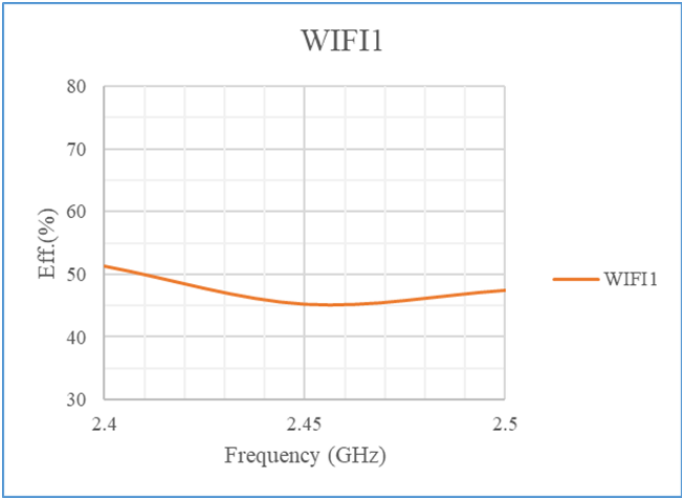
S11 of WiFi Ant1



Series: Raven

Altek P/N: 117-0108-001
PULSE P/N: TZ2530W

Antenna Efficiency



	WIFI1		
Freq. (GHz)	Eff.(dB)	Eff.(%)	Peak Gain (dBi)
2.4	-2.90	51.3	3.3
2.45	-3.45	45.2	3.1
2.5	-3.24	47.4	3.0
5.15	-2.60	55.0	7.6
5.25	-2.10	61.7	7.9
5.35	-2.29	59.0	7.8
5.47	-2.70	53.7	7.5
5.6	-1.91	64.4	7.9
5.725	-2.07	62.1	6.6
5.785	-2.70	53.7	6.1
5.85	-2.42	57.3	6.5

Description:
WIFI ANT1



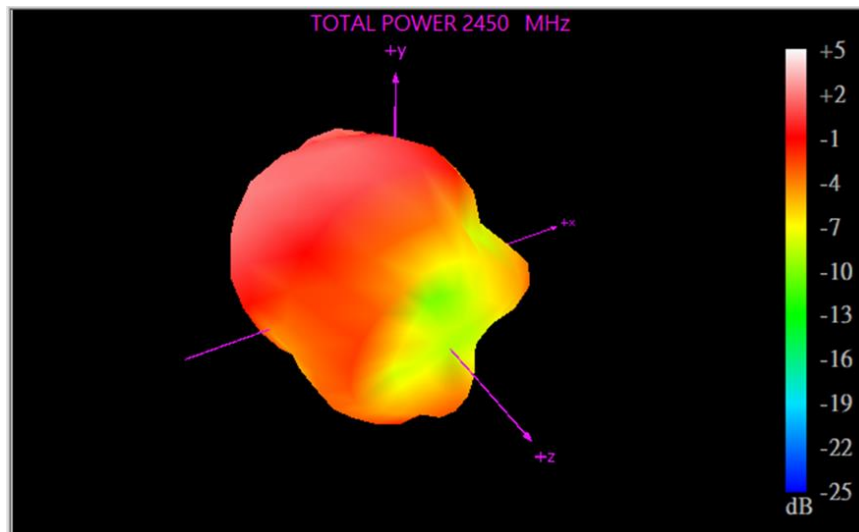
Series: Raven

Altek P/N: 117-0108-001

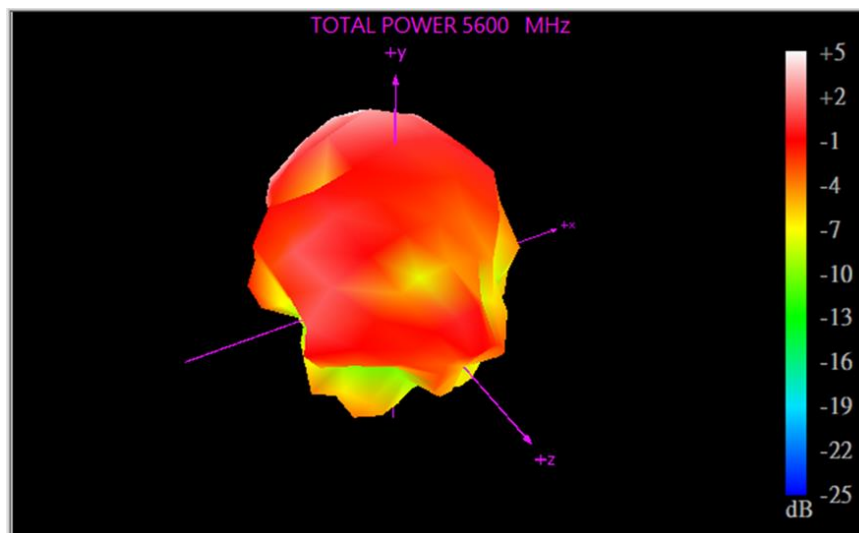
PULSE P/N: TZ2530W

CHARTS

Radiation Pattern of WiFi Ant1 (2450MHz)



Radiation Pattern of WiFi Ant1 (5600MHz)



Description:

WIFI ANT2



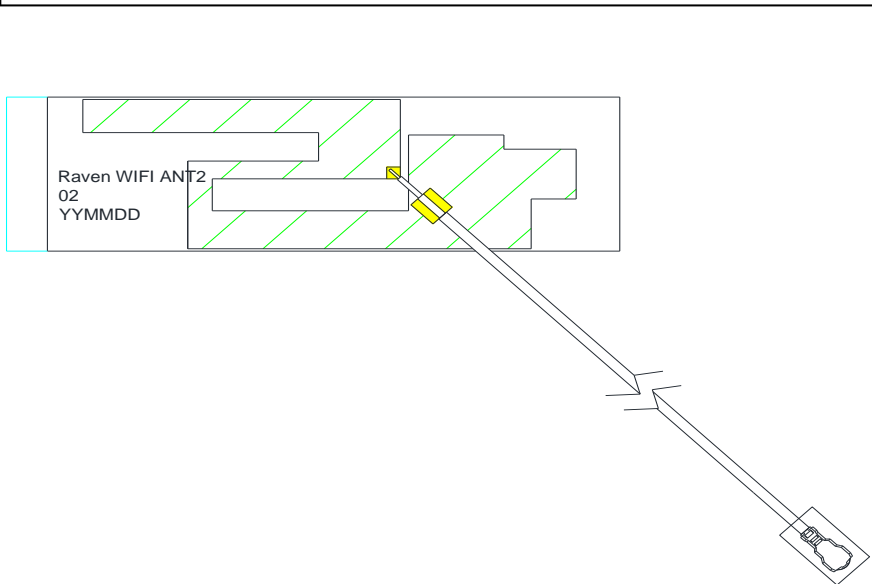
Series: Raven

Altek P/N: 117-0109-001

PULSE P/N: TZ2531W

Features:

- WLAN antenna
- FPC
- 0.81mm LLS cable with IPEX4代
- RoHS Compliant



Applications:

- AI CAM

In the effort to improve our products, we reserve the right to make changes judged to be necessary.

CONFIDENTIAL AND PROPRIETARY INFORMATION

This document contains confidential and proprietary information of Pulse Electronics, Inc. (Pulse) and is protected by copyright, trade secret and other state and federal laws. Its receipt or possession does not convey any rights to reproduce, disclose its contents, or to manufacture, use or sell anything it may describe. Reproduction, disclosure or use without specific written authorization of Pulse is strictly forbidden.

For more information:

Pulse Worldwide Headquarters
 15255 Innovation Drive #100
 San Diego, CA 92128
 USA
 Tel: 1-858-674-8100

Pulse/Larsen Antennas
 18110 SE 34th St Bldg 2 Suite 250
 Vancouver, WA 98683
 USA
 Tel: 1-360-944-7551

Europe Headquarters
 Pulse GmbH & Co, KG
 Zeppelinstrasse 15
 Herrenberg, Germany
 Tel: 49 7032 7806 0

Pulse (Suzhou) Wireless Products Co, Inc.
 99 Huo Ju Road(#29 Bldg, 4th Phase
 Suzhou New District
 Jiangsu Province, Suzhou 215009 PR China
 Tel: 86 512 6807 9998



Series: Raven**Altek P/N:** 117-0109-001**PULSE P/N:** TZ2531W**ELECTRICAL SPECIFICATIONS**

Antenna Type	FPC PIFA
Frequency	2.4-2.5 GHz 5.15-5.85 GHz
Nominal Impedance	50 Ω
Radiation Pattern	Omni
Gain	Refer to below table
Polarization	Linear
Power Withstanding	1W

MECHANICAL SPECIFICATIONS

Overall Length	42*13*0.15mm
Antenna Color / Material	See table, P3
Connector type	See table, P3
Cable type	See table, P3
Cable length	See table, P3
Adhesive tape	Tesa68532

ENVIRONMENTAL SPECIFICATIONS

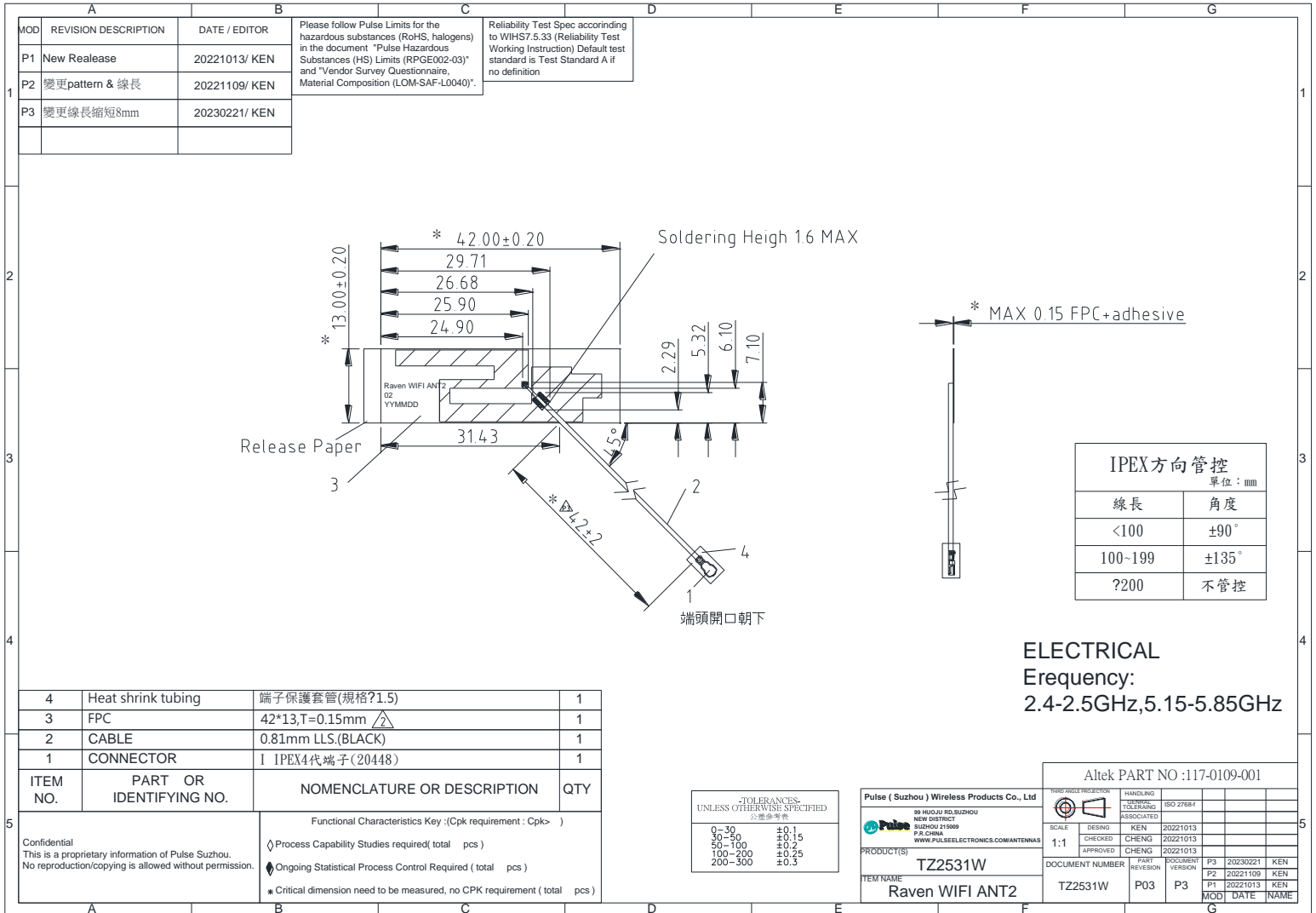
Operating Temperature	-40 ~ +85°C
Storage Temperature	-40 ~ +85°C
RoHS Compliant	Yes

Series: Raven

Altek P/N: 117-0109-001

PULSE P/N: TZ2531W

MECHANICAL DRAWING



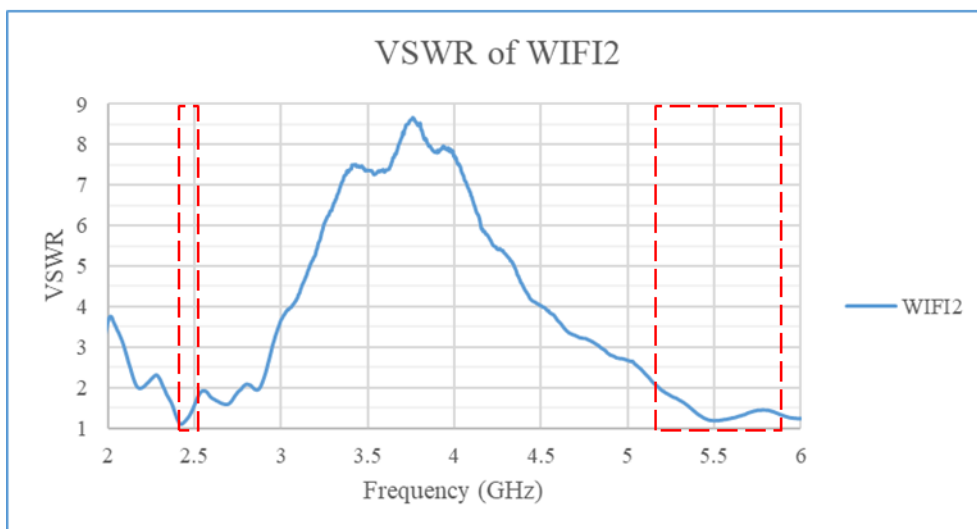
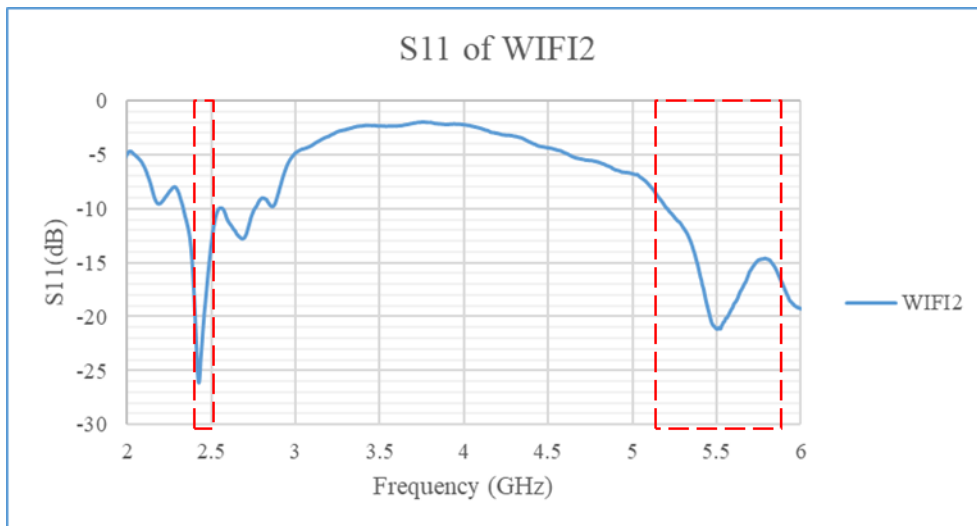
Series: Raven

Altek P/N: 117-0109-001

PULSE P/N: TZ2531W

TEST SETUP

S11 of WiFi Ant2



Description: WIFI ANT2

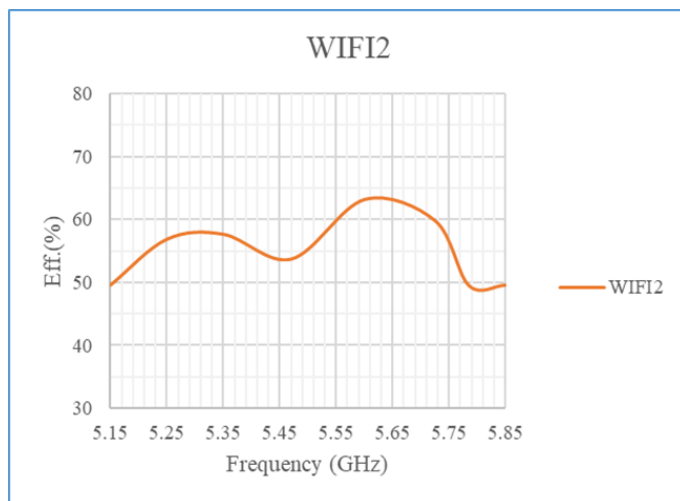
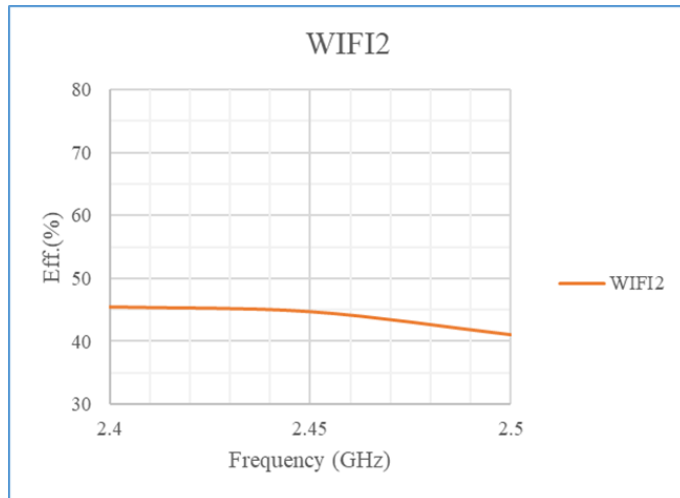


Series: Raven

Altek P/N: 117-0109-001

PULSE P/N: TZ2531W

Antenna Efficiency



WIFI2			
Freq. (GHz)	Eff.(dB)	Eff.(%)	Peak Gain (dBi)
2.4	-3.43	45.4	2.1
2.45	-3.50	44.7	2.2
2.5	-3.86	41.1	2.7
5.15	-3.05	49.5	6.7
5.25	-2.45	56.9	7.3
5.35	-2.39	57.7	7.6
5.47	-2.70	53.7	7.1
5.6	-1.99	63.2	7.2
5.725	-2.23	59.8	6.4
5.785	-3.06	49.4	5.3
5.85	-3.05	49.5	5.2

Description:
WIFI ANT2



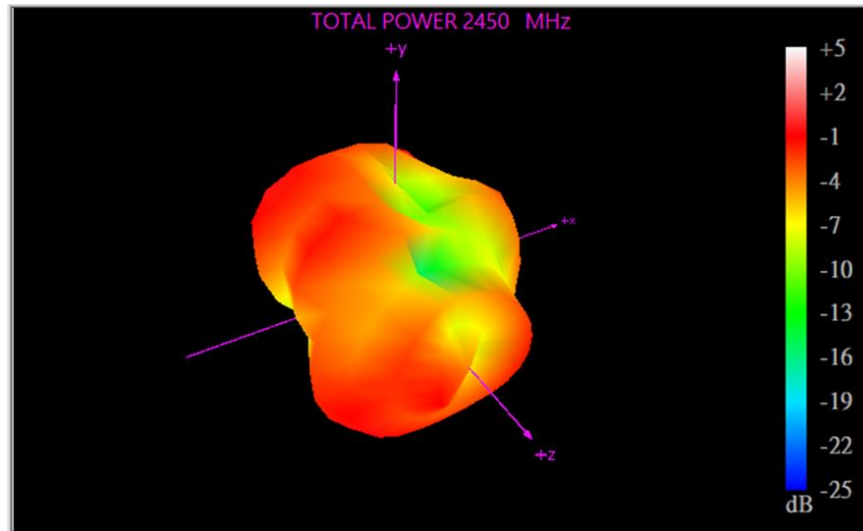
Series: Raven

Altek P/N: 117-0109-001

PULSE P/N: TZ2531W

CHARTS

Radiation Pattern of WiFi Ant2(2450MHz)



Radiation Pattern of WiFi Ant2(5600MHz)

