

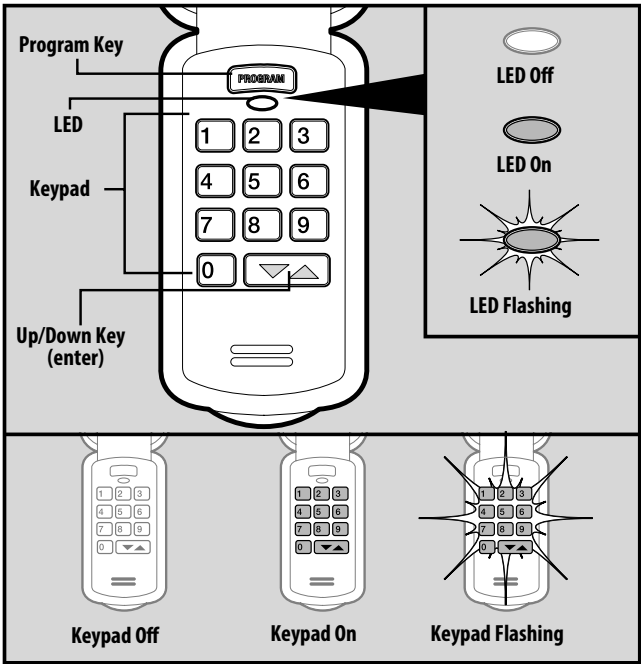


# Universal Wireless Keypad Instructions

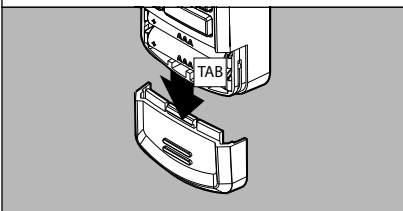
Scan this code with a QR code reader app on a smart device to view a video of these instructions or visit [www.geniecompany.com](http://www.geniecompany.com)



## Keypad Overview



Activate keypad by opening battery compartment and pull protective tab. Reinstall compartment door to begin programming.



**WARNING**  
**MOVING DOOR CAN CAUSE SERIOUS INJURY OR DEATH.**

- **DO NOT** install transmitter (keypad) unless the door operator's **safety device** works as required by the door operator's manual.
- Wall Console must be mounted in sight of door, at least 5 feet above floor and clear of moving door parts.
- **Keep people clear** of opening while door is moving.
- **DO NOT** allow children to play with the transmitter or door operator.

If **safety reverse** does not work properly:

- **Close door then disconnect opener** using the manual release handle.
- **DO NOT** use transmitter or door operator.
- Refer to Door and Door Opener Owner's Manuals before attempting any repairs.

**AVERTISSEMENT**  
**DÉMÉNAGEMENT PORTE PEUT CAUSER DES BLESSURES GRAVES OU LA MORT.**

- NE PAS installer le transmetteur (clavier) à moins que le dispositif de sécurité de l'opérateur de porte ne fonctionne comme l'exige le manuel d'utilisation de la porte.
- Console murale doit être monté en vue de la porte d'au moins 5 pieds au-dessus-de-chaussée et claire des pièces mobiles de la porte.
- Garder les personnes clair de l'ouverture lorsque la porte est en mouvement.
- Ne pas laisser les enfants jouer le premier match à distance ou la porte.

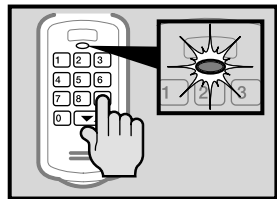
**Si la sécurité inverse ne fonctionne pas correctement:**

- Fermer la porte, puis débranchez moteur à l'aide de la poignée de déverrouillage manuel.
- Ne pas utiliser d'ouverture à distance ou la porte.
- Reportez-vous à la porte et ouvre-porte de propriétaires manuels avant de tenter toute réparation.

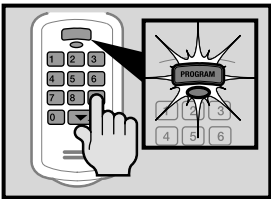
It is recommended to complete programming before mounting keypad

## Keypad LED's

### Successful Entries

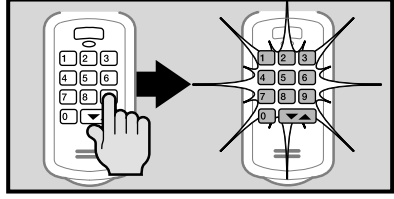


Keypad LED will flash and beep each time a key is pressed and entry is accepted.



Keypad LED and PROGRAM key will flash slowly and number pad back light will remain on for 15 seconds indicating a successful program or valid PIN has been entered.

### Failed Entries



Keypad LED, PROGRAM key and number pad back light will flash rapidly indicating a problem with programming or an invalid PIN entry.

- Press the 7 & 9 keys together 3 times to start over.

## STEP 1-A) DETERMINE THE DOOR OPENER BRAND AND TYPE

Find the model of the garage door opener(s) that this keypad will be operating from the chart below. Mark down the pertinent information in the section below this chart.

ID	BRAND-TYPE	F R E Q - MHz	TYPE	I N S T R Group	DESCRIPTION
1	Genie Intellicode 1	315,390	Rolling	1	Genie Intellicode and OHD Mfg from 1995 to present
2	Chamberlain (Purple)	315	Rolling	1	Chamberlain, Sears Craftsman, LiftMaster, Master Mechanic, and Do It GDO mfg from 2005 to present (purple button)
3	Chamberlain (Orange/Red)	390	Rolling	1	Chamberlain, Sears Craftsman, LiftMaster, Master Mechanic, and Do It GDO mfg from 1997-2004 (orange/red button)
4	Chamberlain (Yellow)	390	Rolling	1	Chamberlain, Sears Craftsman, and LiftMaster GDO mfg from 2011 to present (yellow button)
5	Chamberlain (Green)	390	Rolling	1	Chamberlain, Sears Craftsman, LiftMaster, Master Mechanic, and Do It GDO mfg from 1993-1996 (green button)
6	Genie Intellicode 2	315,390	Rolling	1	Genie Intellicode and OHD Mfg from 2011-2012 <what else?>
7	Sommer	310	Rolling	1	<need details>
8	Linear	318	Fixed-Learn	1	Linear GDO mfg from 1997 to present
9	Wayne Dalton	372.5	Rolling	1	Wayne Dalton GDO mfg from 1999 to present
10	Ryobi	372.5	Rolling	1	Ryobi GOD mfg from 2016 to present <correct?>
11	Guardian	303	Fixed-Learn	1	Guardian and Xtreme GDO mfg from 199x to present <dates? Want others listed, like Boss, Decko, etc?>
12	Marantec	315	Fixed-Learn	1	Marantec GDO mfg from 199x to present <dates?>
13	FAAC	433.92	Rolling	1	
14	FUTURE reserve				
15	FUTURE reserve			1	
16	FUTURE reserve			1	
17	FUTURE reserve			1	
18	FUTURE reserve			1	
19	FUTURE reserve			1	
20	FUTURE reserve			1	
21	Genie - 12 switch binary	390	Fixed-Dip	2	12 DIP switch Genie GDO
22	Genie - 9 switch binary	390	Fixed-Dip	2	9 DIP switch Genie GDO
23	Stanley - 10 switch binary	310	Fixed-Dip	2	10 switch Stanley and Moore-O-Matic GDO
24	FUTURE reserve				
25	FUTURE reserve				

## STEP 1-B) DETERMINE DOOR CODE FOR FIXED CODE OPENERS

*What do fixed code dip switches look like and how do I convert them to button presses on my new universal remote?*

If the opener has a group of 9 switches with 3 positions per switch (**TRINARY**):

- Switch in the UP position = Press button 1
- Switch in the MIDDLE position = Press button 2
- Switch in the DOWN position = Press button 4

In this example, the button presses would be:

4 1 2 1 4 1 1 1 2

If the opener has a group of 9-12 switches with 2 positions per switch (**BINARY**):

- Switch in the UP position = Press button 1
- Switch in the DOWN position = Press button 4

In this example, the button presses would be:

4 1 1 1 4 1 1 1 1 4 4 4

**STEP 1: Each shaded box below represents a DIP switch position.** In these boxes, write in the number 1, 2 or 4 as it corresponds to the UP, MIDDLE or DOWN switch position you see on the remote, opener head or receiver.

### DOOR #1

Convert the 9 switch code:



Convert the 12 switch code:



### DOOR #2

Convert the 9 switch code:



Convert the 12 switch code:



### DOOR #3

Convert the 9 switch code:



Convert the 12 switch code:



### BOX A:

Opener ID - DOOR #1: \_\_\_\_\_  
Opener ID - DOOR #2: \_\_\_\_\_  
Opener ID - DOOR #3: \_\_\_\_\_

### BOX B:

Fixed Code Switch ID - DOOR #1: \_ \_ - \_ - \_ - \_  
Fixed Code Switch ID - DOOR #2: \_ \_ - \_ - \_ - \_  
Fixed Code Switch ID - DOOR #3: \_ \_ - \_ - \_ - \_

## PROGRAMMING STEP 2 - SETTING A PERSONAL PIN NUMBER:

1. Enter a personal PIN. (3-8 digits)
2. Press UP/DOWN key once. (LED will turn solid indicating keypad is ready for opener ID)

## STEP 3 - PROGRAMMING THE KEYPAD - Section A = Learn Type, Section B = Fixed Code Type

This keypad can be used with, up to, 3 different brands and types of garage door openers in any combination. Use the steps below to program each of the 3 doors independently.

### EXAMPLE:

Door #1 is a Genie® brand Intellicode® opener. Use section A - Program Door # 1  
Door #2 is a LiftMaster® Purple Learn button type. Use Section A - Program Door # 2  
Door #3 is an Overhead Door® brand 9 switch trinary type. Use Section B - Program Door #3

### SECTION A - PROGRAMMING THE KEYPAD FOR LEARN CODE TYPE OPENERS:

#### Program Door #1:

1. Enter the OPENER ID written in BOX A - DOOR #1.
2. Press the UP/DOWN key. (LED will go out)
3. Enter PIN.
4. Press UP/DOWN key.
5. Place opener into LEARN MODE. (See placing opener into learn mode section or openers instruction manual for remote programming instruction)
6. Enter PIN.
7. Press UP/DOWN key 3 times. Opener #1 will operate.

#### Program Door #2:

1. Press PGRM button two times.
1. Enter the OPENER ID written in BOX A - DOOR #2.
2. Press the UP/DOWN key. (LED will go out)
3. Enter PIN.
4. Press UP/DOWN key.
5. Place opener into LEARN MODE. (See placing opener into learn mode section or openers instruction manual for remote programming instruction)
6. Enter PIN.
7. Press UP/DOWN key 3 times. Opener #2 will operate.

#### Program Door #3:

1. Press PGRM button 3 times.
1. Enter the OPENER ID written in BOX A - DOOR #3.
2. Press the UP/DOWN key. (LED will go out)
3. Enter PIN.
4. Press UP/DOWN key.
5. Place opener into LEARN MODE. (See placing opener into learn mode section or openers instruction manual for remote programming instruction)
6. Enter PIN.
7. Press UP/DOWN key 3 times. Opener #3 will operate.

### SECTION B - PROGRAMMING THE KEYPAD FOR DIP SWITCH TYPE OPENERS:

#### Program Door #1:

1. Enter the OPENER ID written in BOX A - DOOR #1.
2. Press the UP/DOWN key. (LED will go out)
3. Enter switch string written in BOX B for DOOR #1.
4. Press UP/DOWN key. (LED will blink rapidly)
5. Enter PIN.
6. Press UP/DOWN key. Opener #1 will operate.

#### Program Door #2:

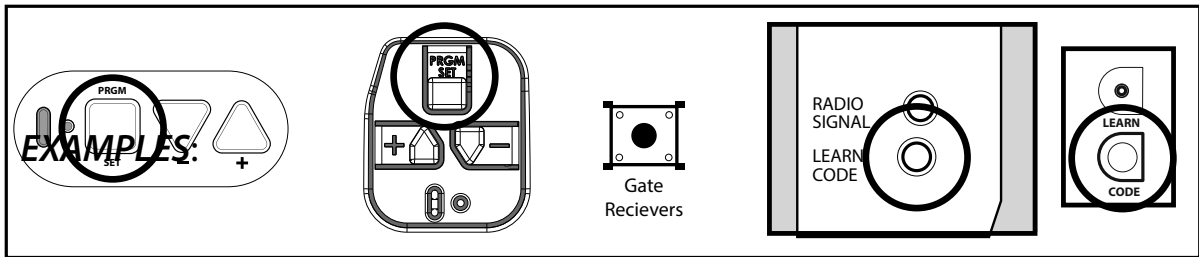
1. Press PGRM button twice.
1. Enter the OPENER ID written in BOX A - DOOR #2.
2. Press the UP/DOWN key. (LED will go out)
3. Enter switch string written in BOX B for DOOR #2.
4. Press UP/DOWN key. (LED will blink rapidly)
5. Enter PIN.
6. Press UP/DOWN key. Opener #2 will operate.

#### Program Door #3:

1. Press PGRM 3 times.
1. Enter the OPENER ID written in BOX A - DOOR #3.
2. Press the UP/DOWN key. (LED will go out)
3. Enter switch string written in BOX B for DOOR #3.
4. Press UP/DOWN key. (LED will blink rapidly)
5. Enter PIN.
6. Press UP/DOWN key. Opener #3 will operate.

## PLACING OPENER INTO LEARN MODE

- Find the LEARN/PGRM button on the garage door opener or external receiver - shape, color or name of this button could vary by brand.
- Most garage door openers LEARN/PGRM buttons are located under the light covers.
- For commercial or gate openers, this button may be on the circuit board of the opener. In some cases, this button could also be on an external receiver that is mounted on or nearby the product. Consult the devices manual if needed.



## IMPORTANT FEATURES OF THIS KEYPAD:

- An audible beep will sound with every key pressed.
- Keypad will operate, up to, 3 doors with one PIN number.
- A temporary PIN can be set for convenient non user access.
- If at any time a mistake is made while programming or operating this keypad, Press the 7 & 9 keys together 3 times. The back light will go out indicating that the keypad is immediately ready for a new entry.

## NOTICE

- ACCESS TO THE GARAGE DOOR OPENER IS REQUIRED TO RESET THE KEYPAD TO THE OPENER -

### CLEARING THE KEYPAD:

If, for any reason, the keypad needs to be reset to factory default, follow these steps:

1. Press and Hold the PRGM & UP/DOWN keys for 5 seconds.
2. The LED will blink twice and go out indicating the keypad is back to factory default.
3. The keypad is now ready to be programmed.

### SETTING A TEMPORARY PIN:

If the keypad is to be used by, normally, unauthorized personnel (Such as a repairman) a temporary PIN can be assigned to that personnel to gain access to the garage.

This PIN will remain active until the main set entry code is used.

1. Enter current active PIN.
2. Press PRGM key three times. (LED will turn solid indicating keypad is ready for temporary PIN)
3. Enter temporary PIN. (3-8 digits).
4. Press PGRM key one time (LED will blink twice and go out indicating a temporary PIN is set)
5. To cancel the temporary PIN. Operate the keypad/door with the original main PIN.
6. Follow the instructions below pertaining to the garage door opener to be programmed to use new PIN.

### RESETTING PIN:

Once the original main PIN is changed, the keypad must be reset to the garage door opener per instructions.

1. Enter current active PIN.
2. Press PRGM key one time. (LED will turn solid indicating keypad is ready for new PIN)
3. Enter new PIN. (3-8 digits).
4. Press PGRM key one time (LED will blink twice and go out indicating a new PIN is set)
5. Follow the instructions below pertaining to the garage door opener to be programmed to use new PIN.

## STEP 4) OPERATING THE KEYPAD WITH THE OPENER(S)

### Single Door Operation:

1. Ensure number pad back lighting is off.
2. Enter PIN.
3. Press the UP/DOWN key.
4. Opener will operate.

### Multi-Door Operation:

1. Ensure number pad back lighting is off.
2. Enter PIN.
3. Press the UP/DOWN key.
4. Press number key corresponding with desired door (1, 2, or 3).
5. Desired opener will operate.

**NOTE:** Keypad will remain active for 15 seconds after a successful entry is made. During this 15 seconds ANY key will operate the opener.

## STEP 5) MOUNTING THE KEYPAD AND REPLACING BATTERIES

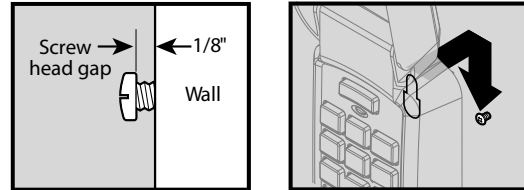
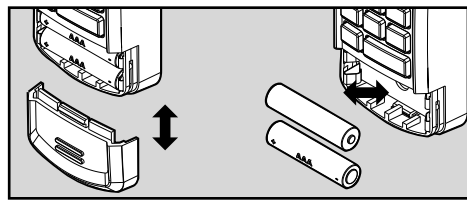
Keypad MUST be mounted within sight of the garage door(s) at least 5 feet above floor and clear of any moving door parts.

- Programming will not be lost during battery removal.

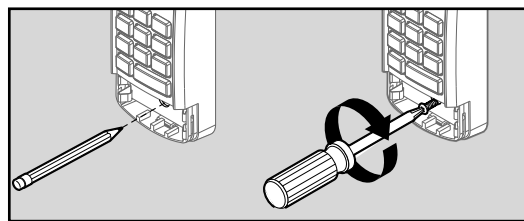
1. Remove battery cover and batteries. Replace if necessary.

NOTE: Only use standard or alkaline AAA batteries.  
DO NOT use rechargeable batteries

2. Drill a 3/32" pilot hole for the top mounting screw.
3. Install included screw into pilot hole, leaving 1/8" gap between the screw head and wall.
4. Hook the slotted mount on back of keypad over the screw.



5. Mark and drill a 3/32" pilot hole for the bottom screw and secure keypad to the wall. (Do not over-tighten).
6. Reinstall batteries.



For questions, comments or troubleshooting, contact The Genie Company at:

1 Door Drive, Mount Hope Ohio, 44660 or call 1-800-354-3643 or visit our website at: [www.geniecompany.com](http://www.geniecompany.com)

### FCC Part 15.21 Statement:

Changes or modifications not expressly approved by the party responsible for compliance could void the user's authority to operate the equipment.

### FCC / IC Statement:

This device complies with FCC Part 15 and Industry Canada licence-exempt RSS standard(s). Operation is subject to the following two conditions: (1) this device may not cause harmful interference, and (2) this device must accept any interference received, including interference that may cause undesired operation of the device.

Le présent appareil est conforme aux CNR d'Industrie Canada applicables aux appareils radio exempts de licence. L'exploitation est autorisée aux deux conditions suivantes : (1) l'appareil ne doit pas produire de brouillage, et (2) l'utilisateur de l'appareil doit accepter tout brouillage radioélectrique subi, même si le brouillage est susceptible d'en compromettre le fonctionnement.

FRENCH & SPANISH VERSIONS GO HERE