

**5101 ANTENNA ASSEMBLY CONSISTING OF ELECTRONICS
BOX AND ANTENNA HEAD**



Electronics box on top, antenna head on bottom

ELECTRONICS ASSEMBLY

PAGE 2

1. Amplifier Interface
2. 3 GHz Receiver Sampler PCA

PAGE 3

PAGE 5

ANTENNA HEAD ASSEMBLY

PAGE 6

3. 5100 TRANSMITTER BOARD
4. BALUN PC BOARD
5. FAN PC BOARD

PAGE 7

PAGE 8

PAGE 6

QF75101 ANTENNA ASSEMBLY
Internal Photos

5101 ELECTRONICS



Electronics box shown with cover removed.



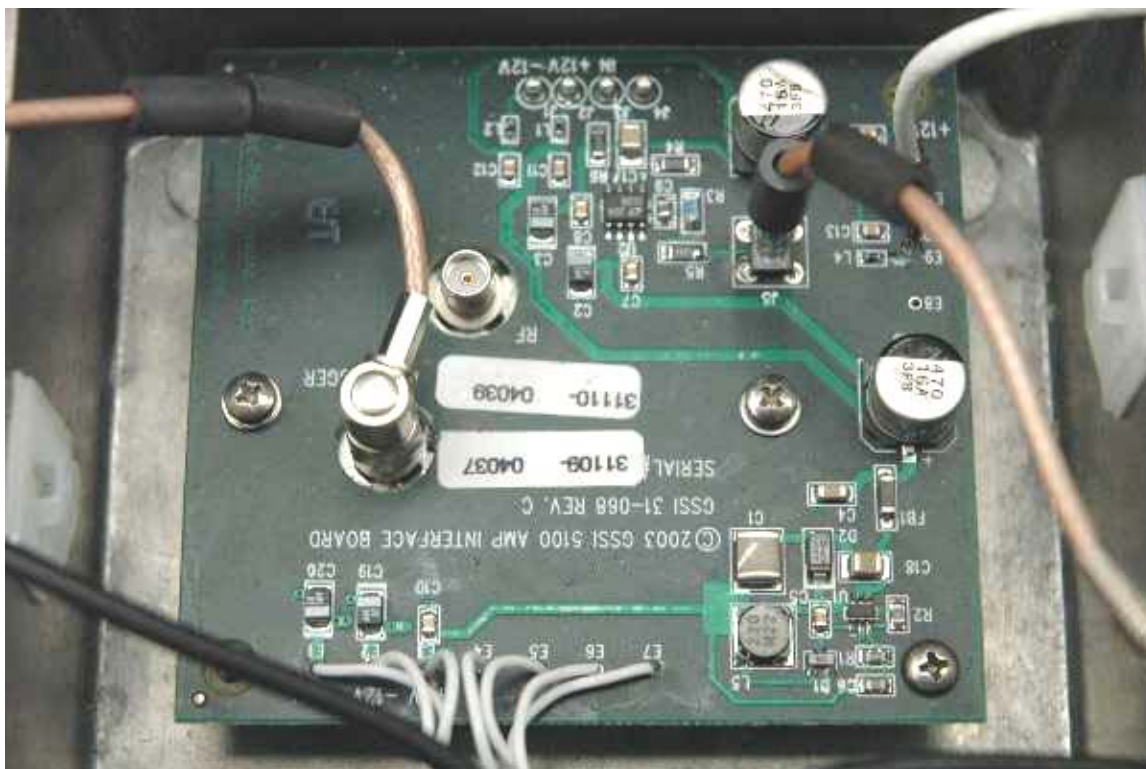
Electronics box shown with bagged shielding removed

QF75101 ANTENNA ASSEMBLY
Internal Photos

1. AMP INTERFACE PC BOARD



Ampifier interface PCA with the delay lines removed

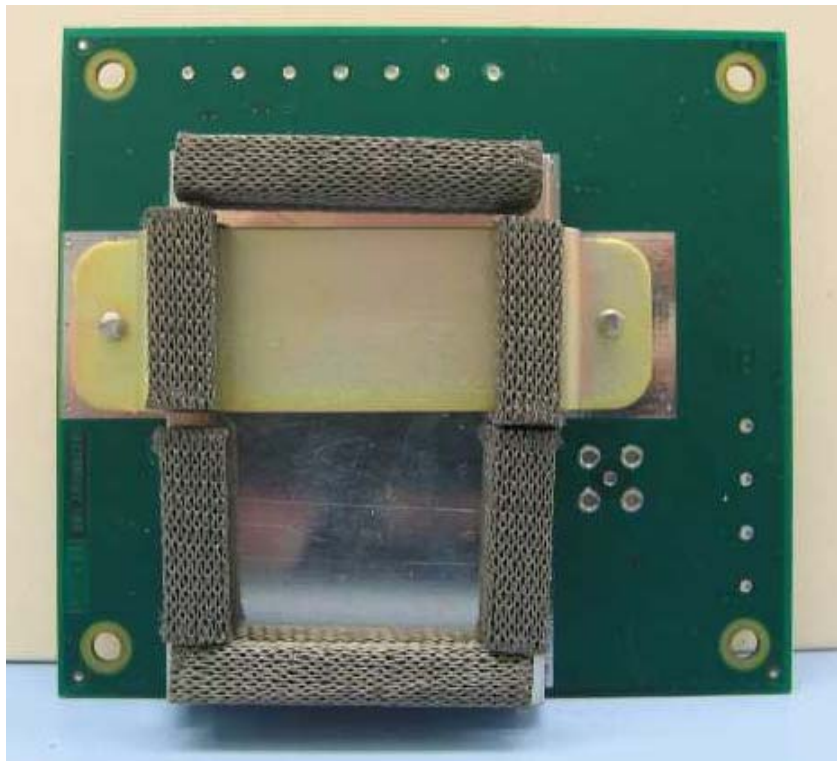


Ampifier interface PCA with the amplifier removed

QF75101 ANTENNA ASSEMBLY
Internal Photos



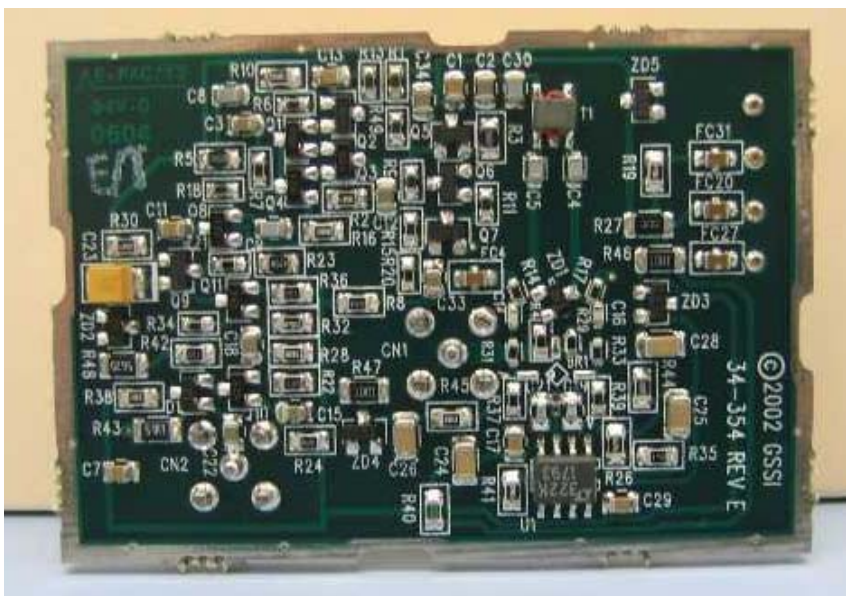
Amplifier



Bottom View of Amplifier interface PCA with shielding can attached

QF75101 ANTENNA ASSEMBLY
Internal Photos

2. 3 GHZ RECEIVER SAMPLER PC BOARD



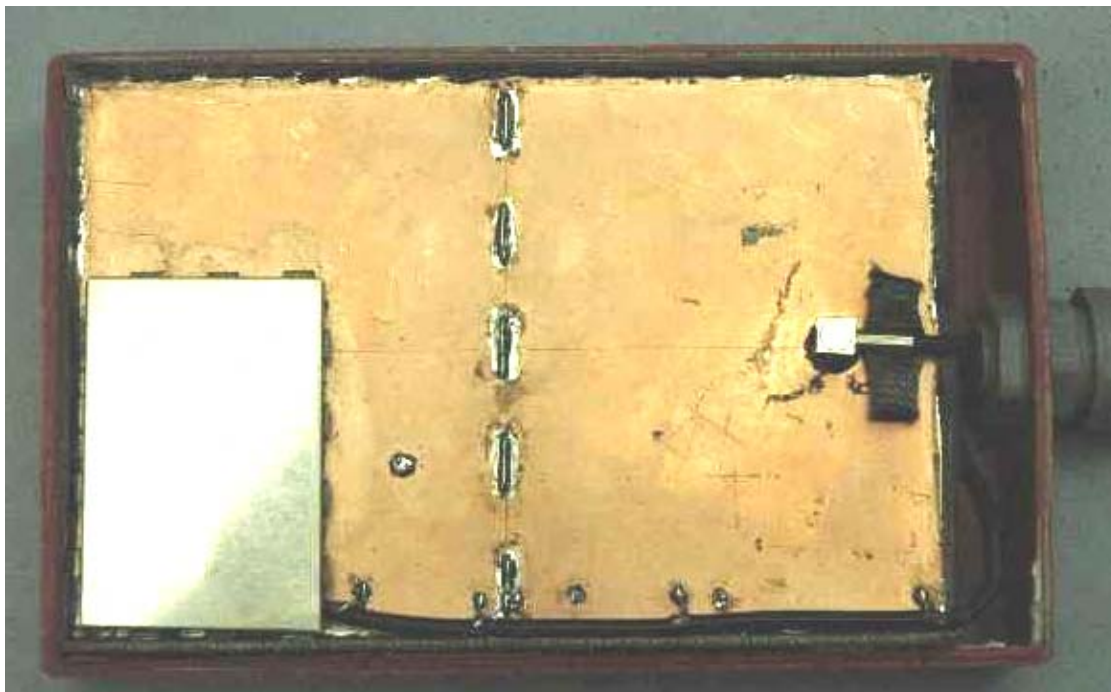
Top view



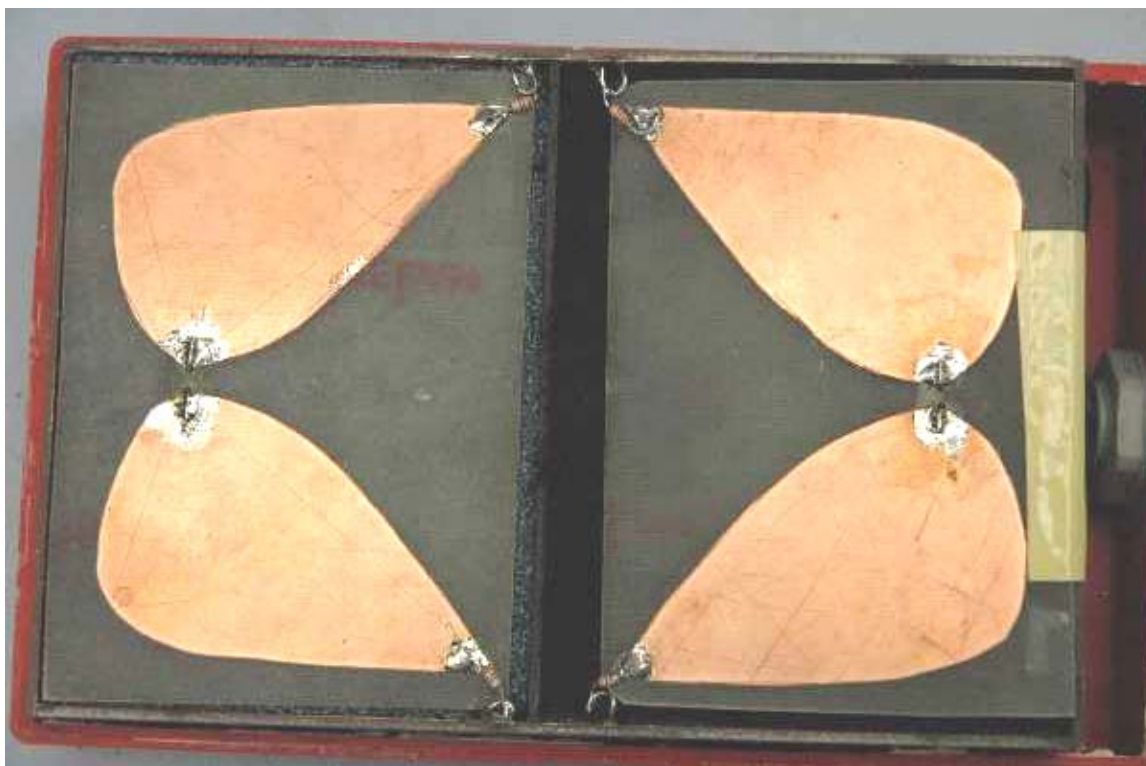
Bottom view

QF75101 ANTENNA ASSEMBLY
Internal Photos

5101 ANTENNA HEAD



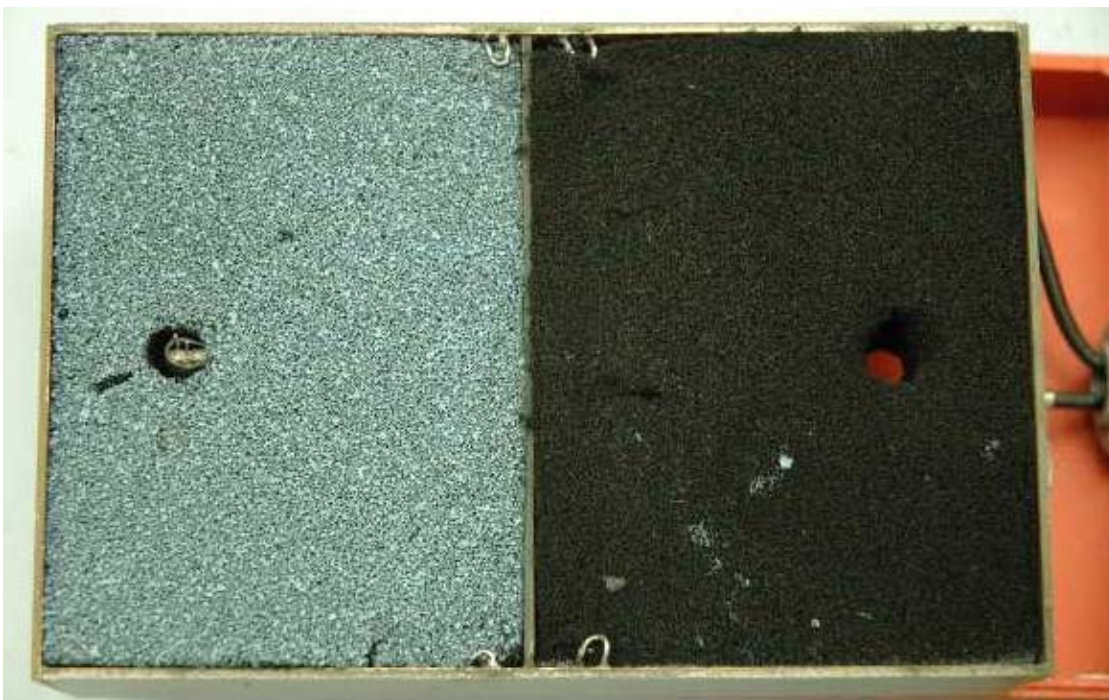
Antenna head shown with cover removed. Antenna Fans are on the opposite side
Right side is the receiver. Left side is the transmitter.



Antenna Head Fans. Right side is the receiver. Left side is the transmitter.

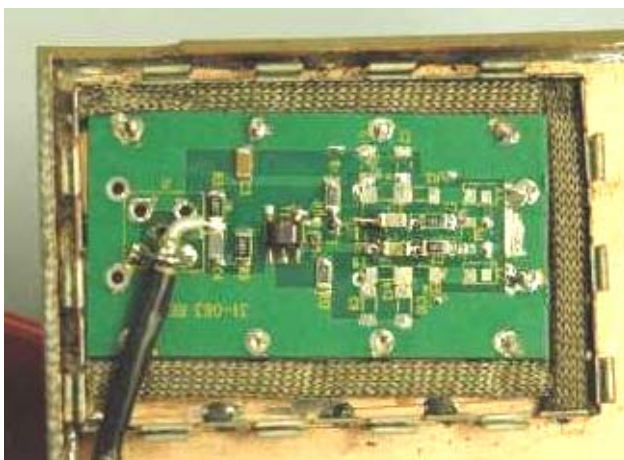
QF75101 ANTENNA ASSEMBLY

Internal Photos



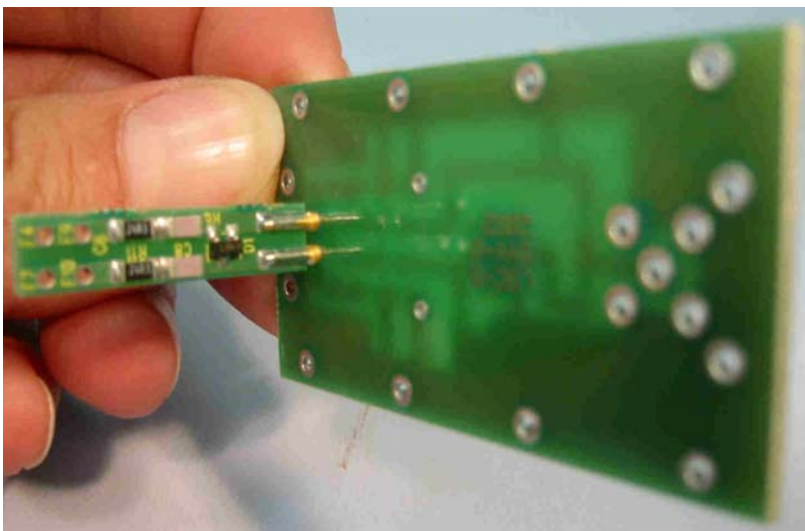
Foam pieces shown with fans removed from the assembly. The left side is the transmitter, right side is the receiver.

4. 5100 TRANSMITTER BOARD AS ASSEMBLED



Transmitter PCA top view with shield removed

QF75101 ANTENNA ASSEMBLY
Internal Photos

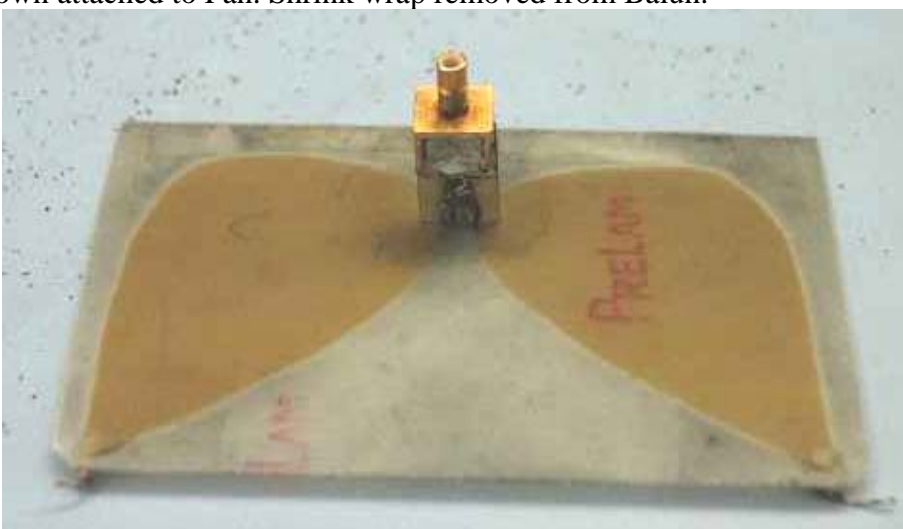


Transmitter PCA bottom view

5. BALUN PC BOARD



Balun PCA shown attached to Fan. Shrink wrap removed from Balun.



Balun PCA opposite side