

GX600 HDR - Internal Photos

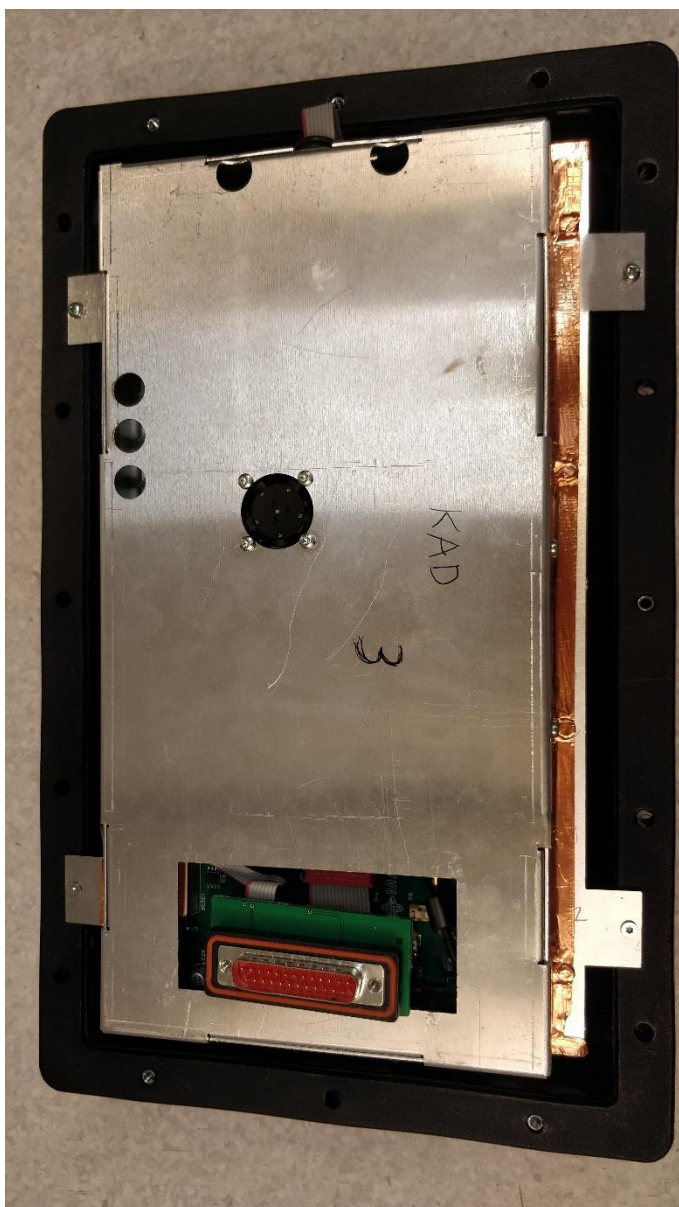


Photo 1. Outer lid removed, exposing inner shielding box.

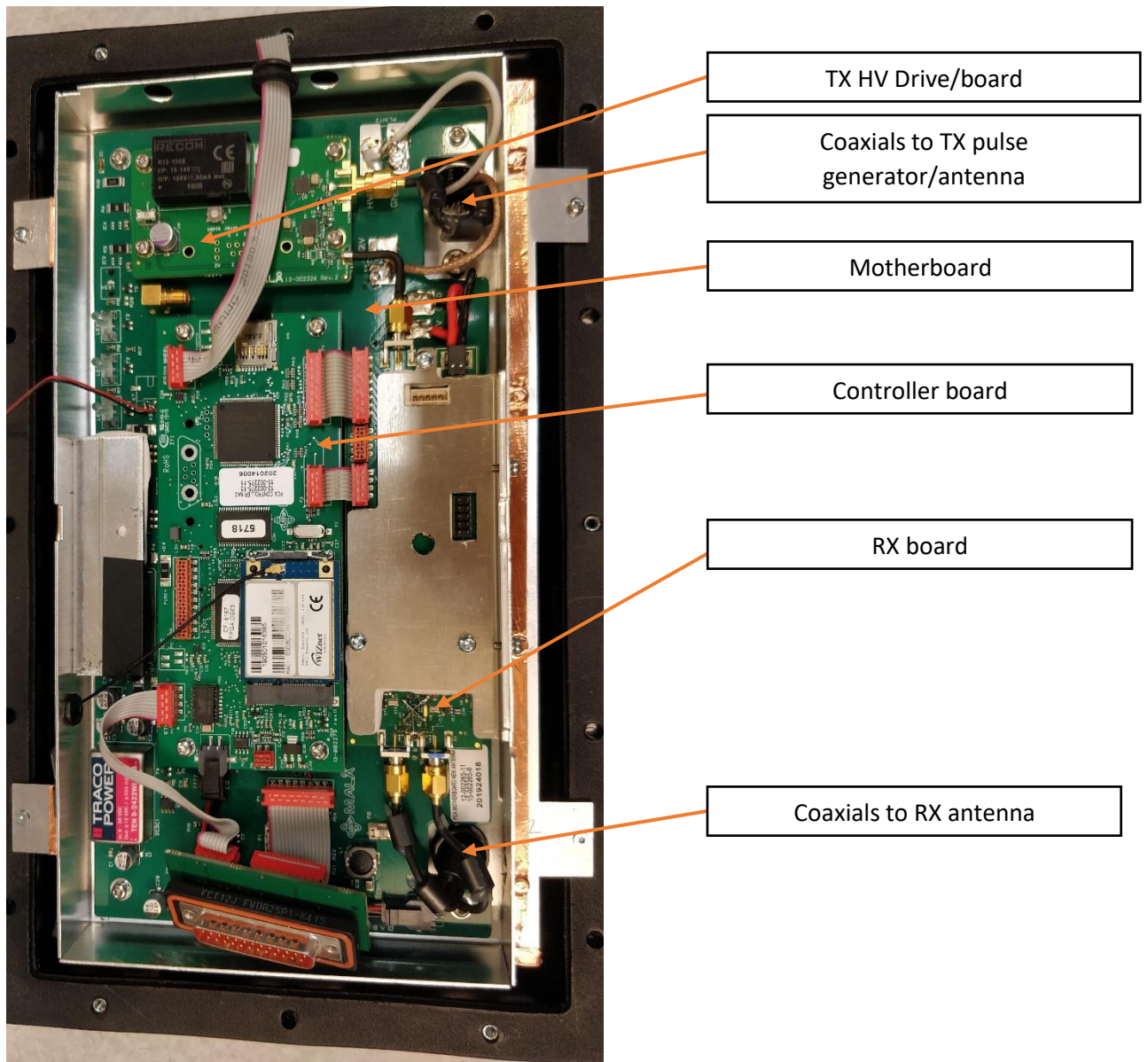


Photo 2: Lid of inner shielding box removed, exposing electronics, viewed from top.

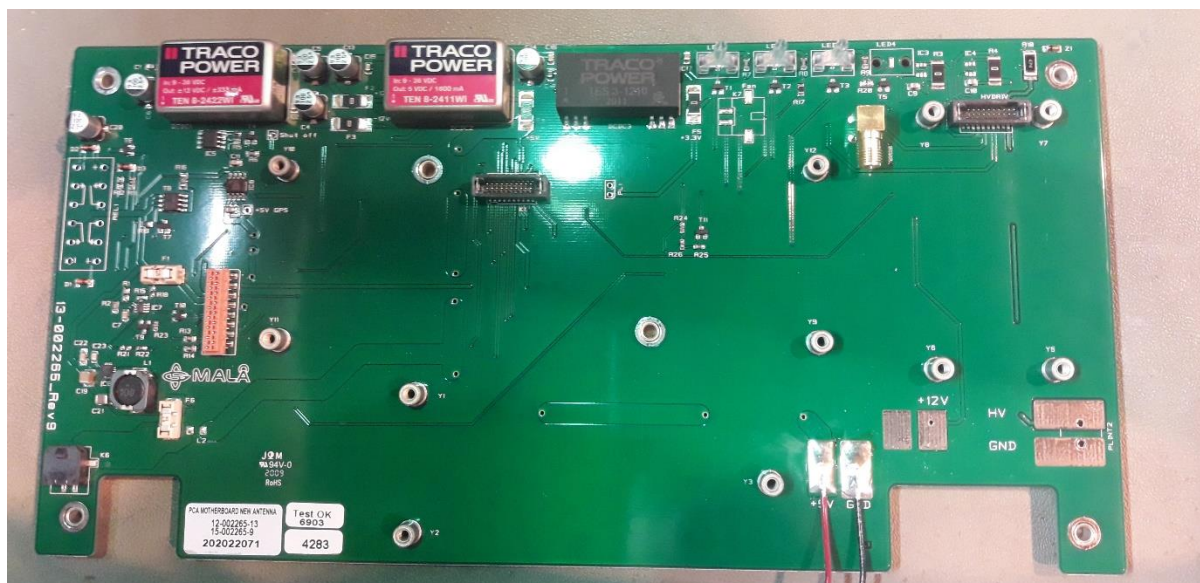


Photo 3: Motherboard - Top view.



Photo 4: Motherboard - Bottom view.



Photo 5: Controller board, Top view.

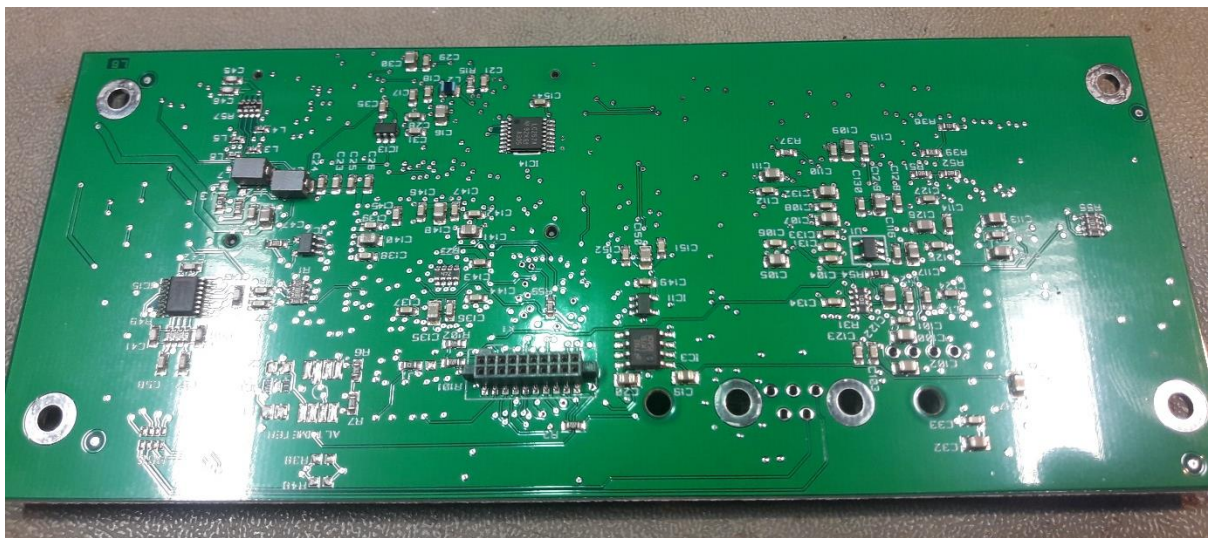


Photo 6: Controller board, Bottom view.

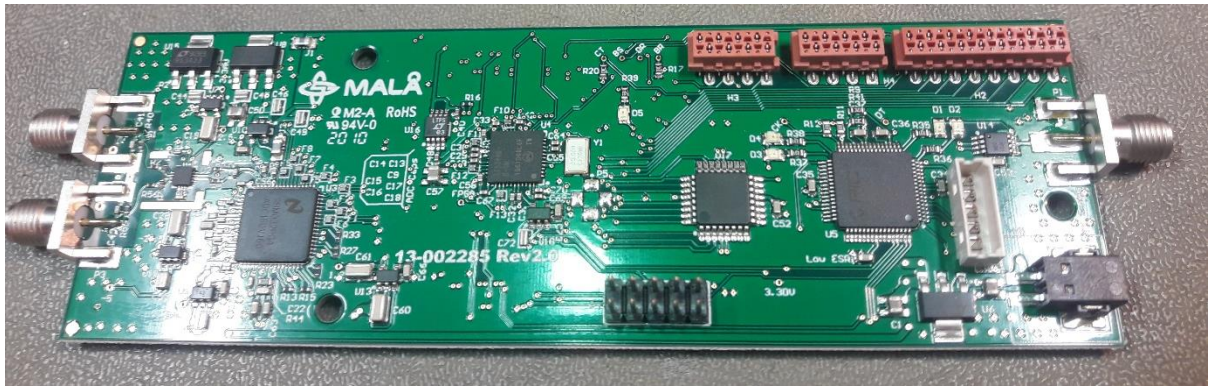


Photo 7: RX board - Top view.



Photo 8: RX board - Bottom view.

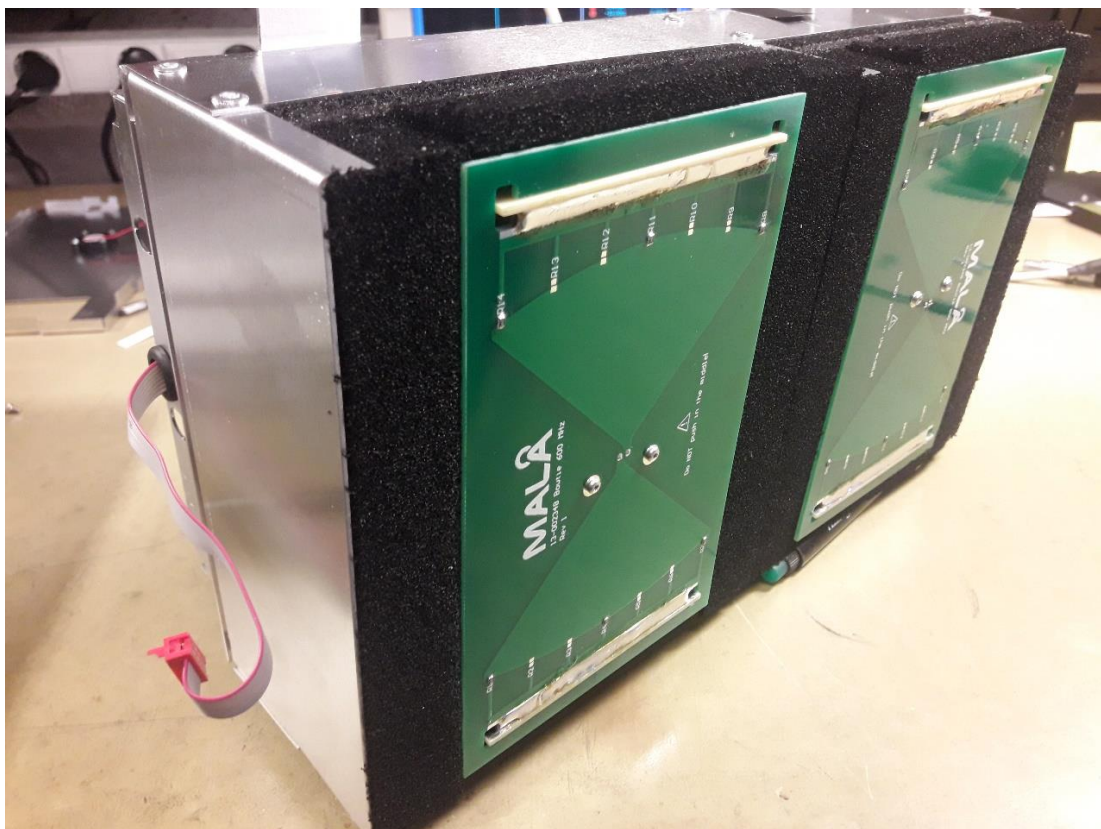


Photo 9: Bottom angle view of inner shielding box, showing bottom of TX-antenna (left) and RX-antenna (right).

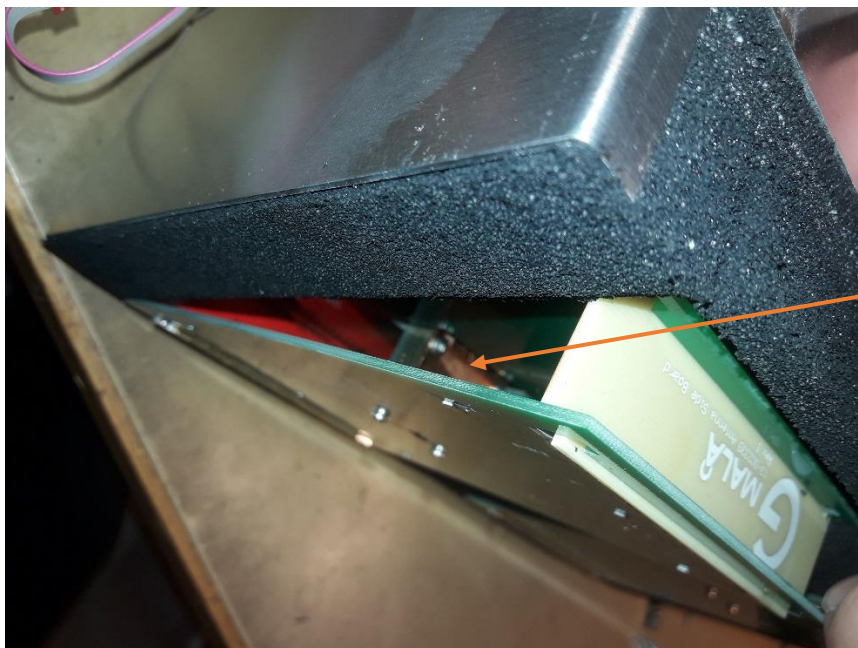


Photo 10: Bottom view of inner shielding box, showing bottom of TX-antenna (left) and RX-antenna (right).



RX connection support

Photo 11: RX-antenna partly pulled out, showing antenna backplane and connection support in centre.



TX pulse generator

Photo 12: TX-antenna partly pulled out, showing antenna backplane and pulse generator location in centre.

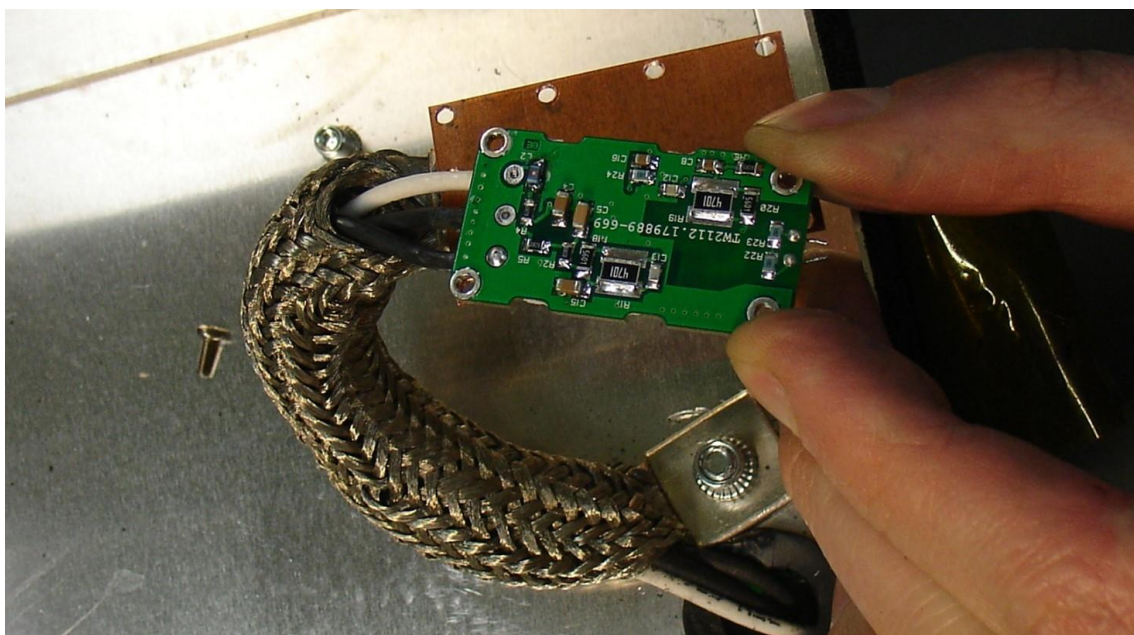


Photo 13: TX Pulse generator board - Rear view.

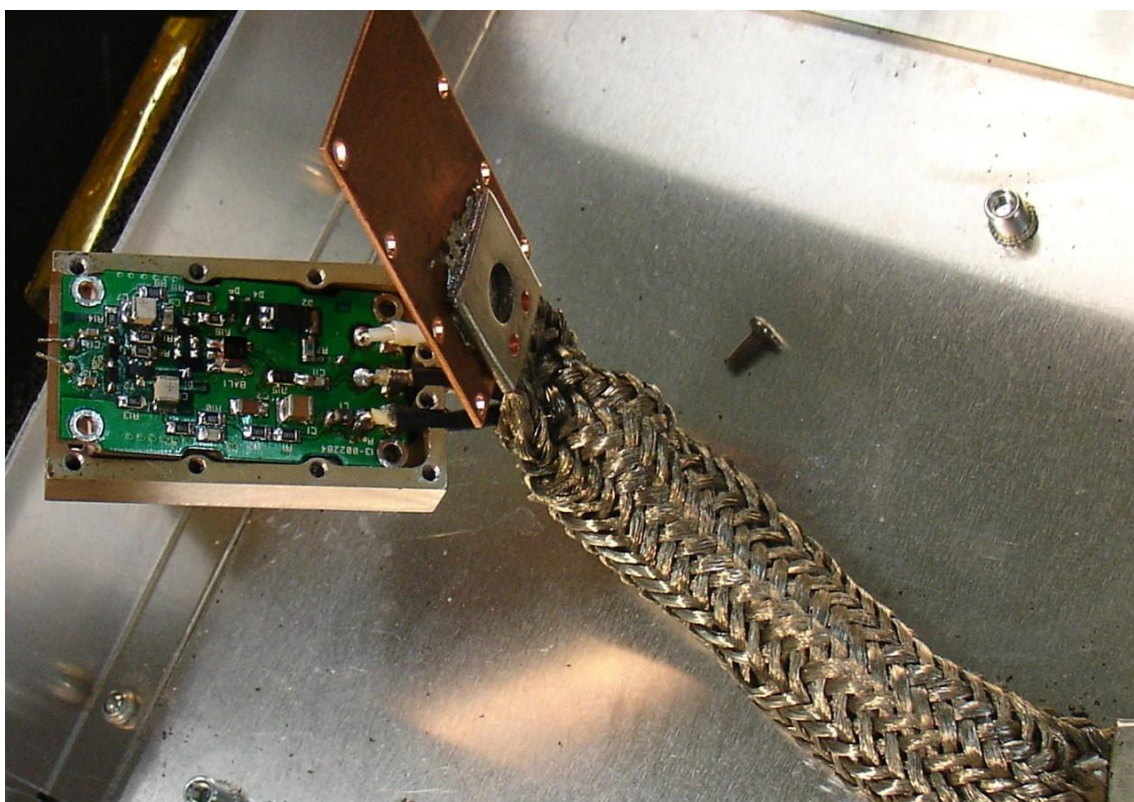


Photo 14: TX Pulse generator board - Front view.