

# Honeywell

## SiXREPEATER Wireless Repeater / Wireless Repeater

### Quick Installation Guide

The Honeywell SiXREPEATER is an RF receiver and a transmitter and is intended to extend the range of Honeywell's SiX series devices by 200 feet (nominal). The SiXREPEATER receives alarm, status, and control messages from SiX series devices, and forwards these messages to control panel. The control then responds accordingly (arm/disarm the system, initiate an alarm, etc).

#### FEATURES

- Transmits its own status, including tamper, AC loss, and RF Jam.
- Status sent when change occurs or during the one hour supervisory check in.
- Provides a 24-hour backup rechargeable battery.
- Features a Spatial Diversity system that virtually eliminates the possibility of "Nulls" and "Dead Spots" within the coverage area.
- Front and wall tampers

#### GENERAL GUIDELINES

- The SiXREPEATER module uses a 5VDC power supply to charge the battery (Max wire length is 9.8 ft. (3m)).
- If the voltage drops to 3.6VDC a low battery will occur.  
**NOTE:** Anything lower than 2.6VDC, it is incapable of charging the battery; it must be replaced
- Before mounting permanently, conduct the Go/No Go test (see controller's instructions) to verify adequate signal strength, relocate if necessary.
- The SIXREPEATER can be installed in a residential environment and is designed to operate 200 plus feet through 3 walls of wood, aluminum and dry wall construction.
- The SiXREPEATER is designed for a single repeat, meaning the correct path is transmitter > repeater > receiver. **NOT** transmitter > repeater > repeater > receiver.

#### PLACEMENT

Find the “Null” or “Dead Spot”

1. Enter the Go-No-Go test mode: For Lyric control: Security > Tools > Installer Code > Test > Go-No-Go Test.
2. Activate any enrolled SiX transmitter in your hand. Listen for the panel to beep and acknowledge the fault.
3. With the enrolled transmitter in your hand continue to fault/restore it until the panel stops acknowledging it.
4. Mount the SiXREPEATER in this location following the guidelines below.

#### MOUNTING

**NOTE:** for best results mount the SiXREPEATER as high as possible, keeping it away from metal objects.

1. Select a mounting position for the module. In most installations, the best mounting location is close to the existing control panel.  
**NOTES:**
  - If needed, you may cut and splice (observing good workmanship) the battery wires and extend their length up to 3 ft. (0.9 meters) using 22 AWG wire, minimum.
  - **DO NOT mount on or inside a metal enclosure/object.**
2. Attach to the wall using the supplied screws.
3. Install the center screw to secure the back tamper to the wall.
4. Ensure the wiring is complete. Use cable ties as necessary to secure wiring.
5. Plug the power supply into an un-switched outlet and secure with screw.
6. Attach the backup battery wires.

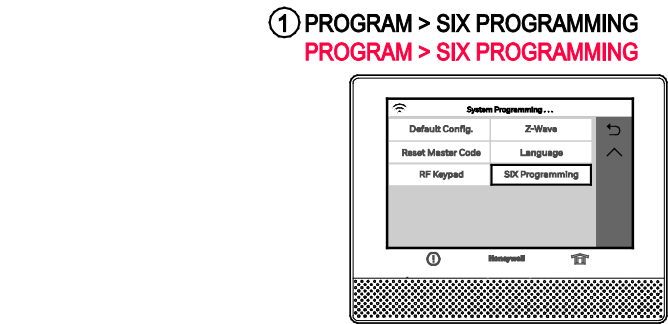
#### ENROLLING

**Lyric Control**  
Lyric Controller Enrollment Process, See Controller's installation instructions for its proper programming process.

**For Lyric Gateway**  
Use AlarmNet 360™ to enroll and program this sensor.

**For Other Controls**  
For other controls that support SiX series devices, see the controller's installation app for details.

**NOTE:** Once enrolled in a system, the SiXREPEATER cannot be used with another controller until it is removed from the current controller. See the Controller's instructions for details.



#### SIGNAL STRENGTH

Range of 1-4 bars (green); should be minimum 1 green bar for the Zone being programmed. Four red bars indicate poor signal strength; the device should be relocated. See the Controller's instructions for bar indication signal strength values. View via Lyric “Program Zones” or SiX Programming display, or AlarmNet 360.

### Guide d'installation rapide

The Honeywell SiXREPEATER is an RF receiver and a transmitter and is intended to extend the range of Honeywell's SiX series devices by 200 feet (nominal). The SiXREPEATER receives alarm, status, and control messages from SiX series devices, and forwards these messages to control panel. The control then responds accordingly (arm/disarm the system, initiate an alarm, etc).

#### FEATURES

- Transmits its own status, including tamper, AC loss, and RF Jam.
- Status sent when change occurs or during the one hour supervisory check in.
- Provides a 24-hour backup rechargeable battery.
- Features a Spatial Diversity system that virtually eliminates the possibility of "Nulls" and "Dead Spots" within the coverage area.
- Front and wall tampers

#### GENERAL GUIDELINES

- The SiXREPEATER module uses a 5VDC power supply to charge the battery (Max wire length is 9.8 ft. (3m)).
- If the voltage drops to 3.6VDC a low battery will occur.  
**NOTE:** Anything lower than 2.6VDC, it is incapable of charging the battery; it must be replaced
- Before mounting permanently, conduct the Go/No Go test (see controller's instructions) to verify adequate signal strength, relocate if necessary.
- The SIXREPEATER can be installed in a residential environment and is designed to operate 200 plus feet through 3 walls of wood, aluminum and dry wall construction.
- The SiXREPEATER is designed for a single repeat, meaning the correct path is transmitter > repeater > receiver. **NOT** transmitter > repeater > repeater > receiver.

#### PLACEMENT

Find the “Null” or “Dead Spot”

1. Enter the Go-No-Go test mode: For Lyric control: Security > Tools > Installer Code > Test > Go-No-Go Test.
2. Activate any enrolled SiX transmitter in your hand. Listen for the panel to beep and acknowledge the fault.
3. With the enrolled transmitter in your hand continue to fault/restore it until the panel stops acknowledging it.
4. Mount the SiXREPEATER in this location following the guidelines below.

#### MOUNTING

**NOTE:** for best results mount the SiXREPEATER as high as possible, keeping it away from metal objects.

1. Select a mounting position for the module. In most installations, the best mounting location is close to the existing control panel.  
**NOTES:**
  - If needed, you may cut and splice (observing good workmanship) the battery wires and extend their length up to 3 ft. (0.9 meters) using 22 AWG wire, minimum.
  - **DO NOT mount on or inside a metal enclosure/object.**
2. Attach to the wall using the supplied screws.
3. Install the center screw to secure the back tamper to the wall.
4. Ensure the wiring is complete. Use cable ties as necessary to secure wiring.
5. Plug the power supply into an un-switched outlet and secure with screw.
6. Attach the backup battery wires.

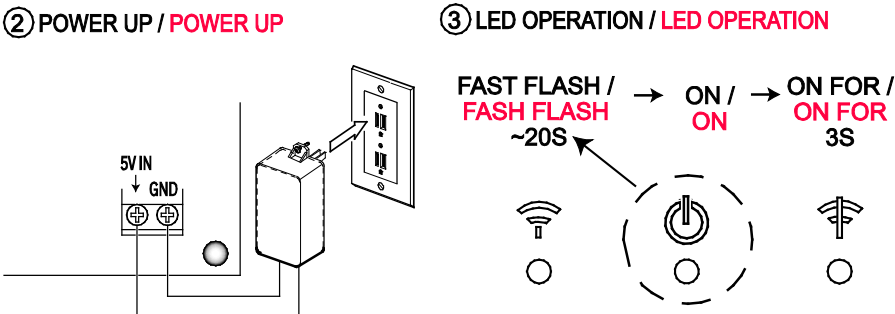
#### ENROLLING

**Lyric Control**  
Lyric Controller Enrollment Process, See Controller's installation instructions for its proper programming process.

**For Lyric Gateway**  
Use AlarmNet 360™ to enroll and program this sensor.

**For Other Controls**  
For other controls that support SiX series devices, see the controller's installation app for details

**NOTE:** Once enrolled in a system, the SiXREPEATER cannot be used with another controller until it is removed from the current controller. See the Controller's instructions for details.



#### SIGNAL STRENGTH

Range of 1-4 bars (green); should be minimum 1 green bar for the Zone being programmed. Four red bars indicate poor signal strength; the device should be relocated. See the Controller's instructions for bar indication signal strength values. View via Lyric “Program Zones” or SiX Programming display, or AlarmNet 360.

24-HOUR ENROLLMENT DELETION AND DEFAULT

If the device is enrolled in a panel different than the intended panel, and you are unable to delete it from the unintended panel, reset default the device to factory default setting:

- 1. Open the cover and verify device is powered on.
- 2. Press and hold the tamper switch for 20 seconds.
- 3. The Green enrollment LED rapidly flashes and the SiXREPEATER defaults.

This procedure is available for 24 hours after enrollment with a panel and the device remains powered (battery installed).

SENSOR LOCATION FEATURE

To verify the location of each SiX device in an installation, enter programming mode and select a SiX device zone. The device LED (located on the PCB) lights (can take up to 30 seconds). **NOTE:** This LED is not seen with the cover on. To view, the tamper switch must be pressed down on the SiXREPEATER. Select it again to turn the LED off or select the next device to locate.

SUPERVISION

If module supervision is desired, assign the SiXREPEATER to a zone. This sends check-in, low battery, AC loss, and RF jam messages. When prompted, toggle the tamper switch to enroll the MAC ID number. The yellow LED should blink on when messages are sent.

Program the zone configuration as follows:

| Zone Type       | Input Type        | Loop |
|-----------------|-------------------|------|
| 8 (24-hour aux) | 3 (supervised RF) | 1    |

NOTES:

- The SiXREPEATER reports AC loss and RF jam conditions as “low battery” status, which is also displayed on the control’s keypads. This prevents either condition from causing an alarm when the control is armed.
- The SiXREPEATER will not repeat a message that has already been repeated.
- If an actual low battery condition is reported, it takes up to 12 hours after AC power is restored for the low battery restore message to be sent (requires 12 hours for fully recharged battery).




TAMPER/LOW BATTERY REPORTING

The SiXREPEATER reports this condition to the control. If a low battery or tamper condition exists all zones used on the module shows a trouble on the control.

IMPORTANT:

The first battery test occurs 1-hour after power up. To quickly verify a good backup battery, unplug and then plug back in the power supply; the system will perform a battery test within 1-minute.

LED INDICATIONS / LED INDICATIONS

|                 |  |  |  |
|-----------------|---|---|---|
|                 | RSSI  | Power   | RF Jamming  |
| Green / Green   | Reliable Signal / Reliable Signal   | AC Powered / AC Powered   | OK, No Jamming / OK, No Jamming   |
| Yellow / Yellow | Marginal Signal / Marginal Signal   | Operating on Battery / Operating on Battery   | Jam Detected / Jam Detected   |
| Red / Red       | No Signal / No Signal   | Low Battery / Low Battery   | Can't Avoid Jamming / Can't Avoid Jamming   |

Approval Listings / Approbations Homologations:

FCC / IC - ETL Listed to UL268 & 521  
cETL Listed to ULC S530 & S531  
Other Standards / Autres normes: RoHS



FEDERAL COMMUNICATIONS COMMISSION (FCC) & ISED

The user shall not make any changes or modifications to the equipment unless authorized by the Installation Instructions or User's Manual. Unauthorized changes or modifications could void the user's authority to operate the equipment.

FCC / ISED STATEMENT

This device complies with Part 15 of the FCC Rules, and ISED's license-exempt RSSs. Operation is subject to the following two conditions: (1) This device may not cause harmful interference, and (2) This device must accept any interference received, including interference that may cause undesired operation.  
Cet appareil est conforme à la partie 15 des règles de la FCC et exempt de licence RSS d'ISED. Son fonctionnement est soumis aux conditions suivantes: (1) Cet appareil ne doit pas causer d'interférences nuisibles. (2) Cet appareil doit accepter toute interférence reçue y compris les interférences causant une réception indésirable.

|  |  |
|--|--|
| Responsible Party / Issuer of Supplier's Declaration of Conformity: Honeywell International, 2 Corporate Center Drive., Melville, NY 11747, Ph: 516-577-2000 | Partie responsable / Émetteur de la déclaration de conformité du fournisseur : Honeywell International, 2 Corporate Center Drive., Melville, NY 11747, Tél. 516 577-2000 |
|--|--|

SPECIFICATIONS / SPÉCIFICATIONS:

|  |   |
|--|---|
| <b>Voltage / Voltage</b><br>Transformer Part # / Transformer Part #.....300-10259<br>Input Voltage / Input Voltage ..... 100 ~ 240VAC, 50 ~60 Hz<br>Operating Voltage / Operating Voltage .....5VDC (1A)<br>Maximum Transformer Distance / Maximum Transformer Distance.....9.8ft. (3m)<br>Battery/ Pile.....P/N 300-10342   |   |
| <b>Environmental /Environmental</b><br>Operating Temperature / Operating Temperature ..... 14 °F (-10°C) to 140°F (60°C)<br><b>NOTE:</b> Charging the lithium battery stops when temperature is below 32°F (0°C)<br><b>NOTE:</b> Charging the lithium battery stops when temperature is below 32°F (0°C)<br>Relative Humidity / Relative Humidity ..... 95%, Non-condensing / 95%<br>.....max. sans condensation |   |
| <b>Physical / Physical</b><br>Dimensions / Dimensions .....Length / Length 6.9 in (175 mm) x<br>Width / Width4.4 in (113 mm) x<br>Depth / Depth 1.2 in (31 mm)<br>Conduit Insert / Conduit Insert .....1/2 in (12.7mm)<br>Acceptable Cable Size / Acceptable Cable Size .....14 – 22AWG  |   |
| See Honeywell Installation Guide P/N 800-24399– <a href="https://mywebtech.honeywell.com/">https://mywebtech.honeywell.com/</a> .  | Voir les instructions d'installation complètes 800-24399- <a href="https://mywebtech.honeywell.com/">https://mywebtech.honeywell.com/</a> . |

24-HOUR ENROLLMENT DELETION AND DEFAULT

If the device is enrolled in a panel different than the intended panel, and you are unable to delete it from the unintended panel, reset default the device to factory default setting:

- 1. Open the cover and verify device is powered on.
- 2. Press and hold the tamper switch for 20 seconds
- 3. The Green enrollment LED rapidly flashes and the SiXREPEATER defaults.

This procedure is available for 24 hours after enrollment with a panel and the device remains powered (battery installed).

SENSOR LOCATION FEATURE

To verify the location of each SiX device in an installation, enter programming mode and select a SiX device zone. The device LED (located on the PCB) lights (can take up to 30 seconds). **NOTE:** This LED is not seen with the cover on. To view, the tamper switch must be pressed down on the SiXREPEATER. Select it again to turn the LED off or select the next device to locate.

SUPERVISION

If module supervision is desired, assign the SiXREPEATER to a zone. This sends check-in, low battery, AC loss, and RF jam messages. When prompted, toggle the tamper switch to enroll the MAC ID number. The yellow LED should blink on when messages are sent.

Program the zone configuration as follows:

| Zone Type       | Input Type        | Loop |
|-----------------|-------------------|------|
| 8 (24-hour aux) | 3 (supervised RF) | 1    |

NOTES:

- The SiXREPEATER reports AC loss and RF jam conditions as “low battery” status, which is also displayed on the control’s keypads. This prevents either condition from causing an alarm when the control is armed.
- The SiXREPEATER will not repeat a message that has already been repeated.
- If an actual low battery condition is reported, it takes up to 12 hours after AC power is restored for the low battery restore message to be sent (requires 12 hours for fully recharged battery).

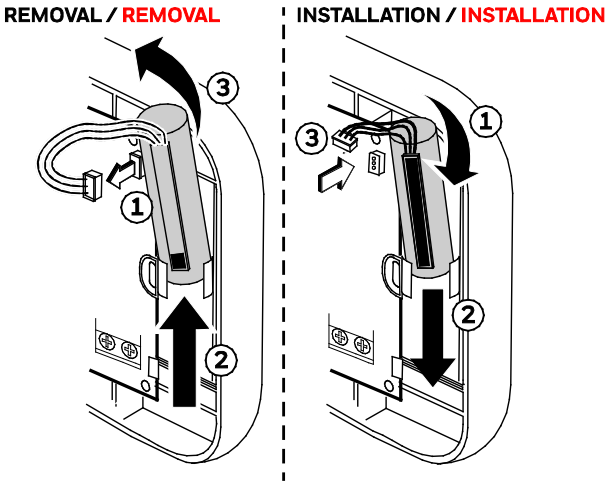
TAMPER/LOW BATTERY REPORTING

The SiXREPEATER reports this condition to the control. If a low battery or tamper condition exists all zones used on the module shows a trouble on the control.

IMPORTANT:

The first battery test occurs 1-hour after power up. To quickly verify a good backup battery, unplug and then plug back in the power supply; the system will perform a battery test within 1-minute.

BATTERY / BATTERY



CAUTION!

The batteries used in this device may present a fire or chemical burn hazard if mistreated. Do not recharge, disassemble, heat above 212°F (100°C) or dispose of in fire. Use Panasonic CR123A or DURACELL DL123, DL 123A Lithium batteries. Use of other batteries may present a risk of fire or explosion. Keep used batteries away from children. Dispose of used batteries properly.  
Remove old batteries. Wait 10 seconds and then replace with four new batteries. To avoid a low battery indication when installing new batteries, both batteries must be installed within 15 seconds of installing the first one. Any low battery condition that may have occurred should clear when the back plate is installed.

MISE EN GARDE!

Les piles utilisées dans ce dispositif peuvent présenter des risques d'incendie ou de brûlure chimique si elles sont mal traitées. Ne rechargez pas, ne désassemblez pas, ne faites pas chauffer et ne jetez pas au feu les piles à plus de 100 °C (212 °F). Utilisez des piles au lithium Panasonic CR123A ou DURACELL DL123, DL 123A. L'utilisation d'autres types de piles peut présenter des risques de feu ou d'explosion. Gardez les vieilles piles hors de la portée des enfants. Débarrassez-vous des batteries utilisées de façon appropriée.  
Retirez les vieilles piles. Attendez 10 secondes et remplacer-les par quatre nouvelles piles. Pour éviter une indication de piles faibles lorsque vous installez de nouvelles piles, les dos (2) piles doivent être installées en deçà de 15 secondes après l'installation de la première. Toute condition de pilles faibles qui aurait pu se produire devrait être rétablie une fois la plaque arrière installée.

REFER TO THE INSTALLATION INSTRUCTIONS FOR THE CONTROL WITH WHICH THIS DEVICE IS USED, FOR DETAILS REGARDING LIMITATIONS OF THE ENTIRE ALARM SYSTEM.  
POUR LES LIMITES DU SYSTÈME D'ALARME AU COMPLET, REPORTEZ-VOUS AU GUIDE D'INSTALLATION DU PANNEAU DE COMMANDE

Support / Pour de l'assistance en ligne, visitez : <https://mywebtech.honeywellhome.com/>  
U.S. warranty / U.S. garantie: [www.honeywell.com/security/hsc/resources/wa](http://www.honeywell.com/security/hsc/resources/wa)  
For patent info, see: / Pour des informations sur les brevets, voir : [www.honeywell.com/patents](http://www.honeywell.com/patents)



MyWebTech



Warranty



Patents

