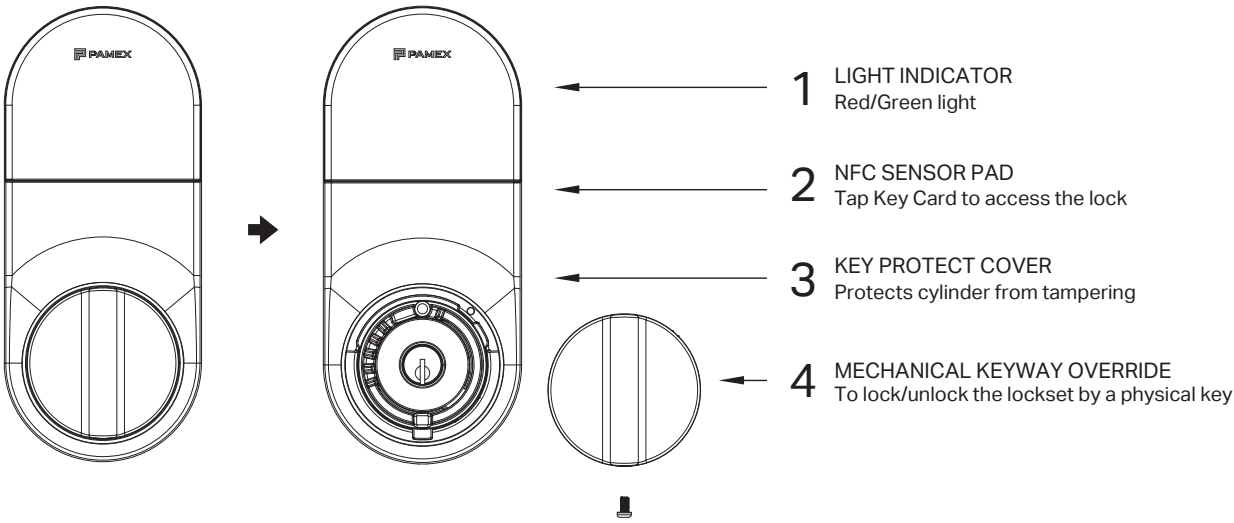


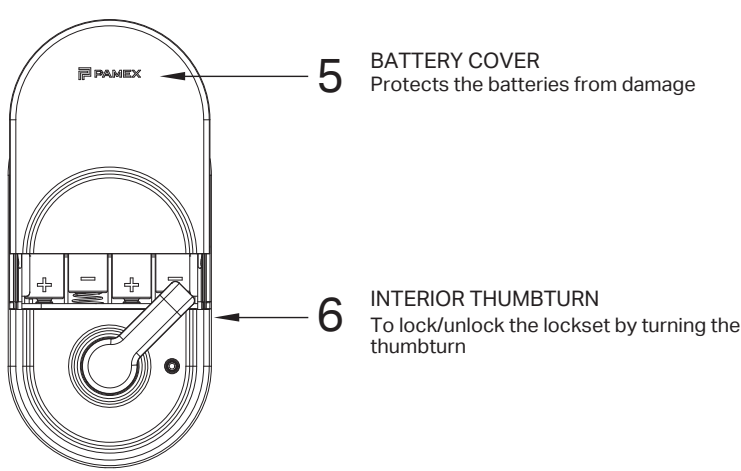
USER GUIDE

1 OVERVIEW OF THE LOCKSET

EXTERIOR LOCKSET

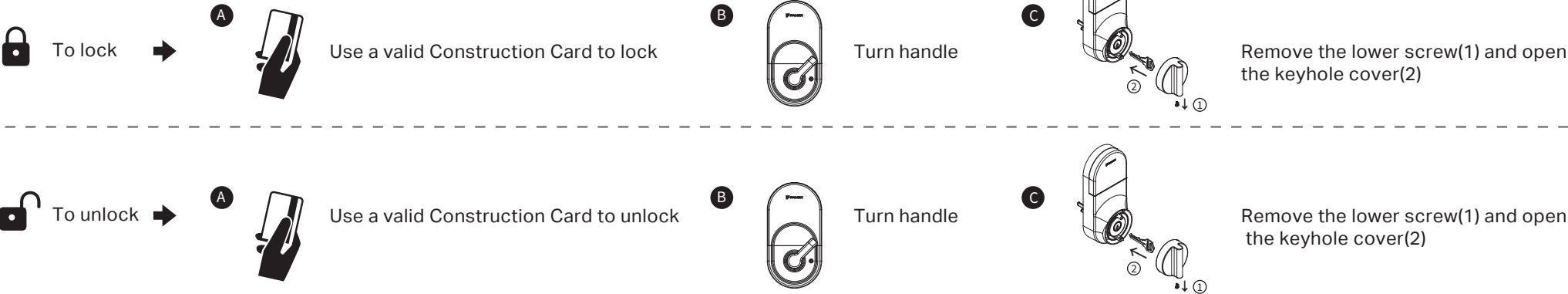


INTERIOR LOCKSET



2 HOW TO LOCK / UNLOCK / PROGRAM THE LOCKSET / RESET TO FACTORY SETTINGS

1 HOW TO LOCK / UNLOCK THE LOCKSET



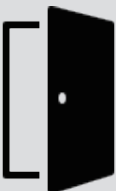
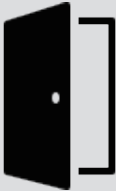
2 HOW TO PROGRAM THE LOCKSET

- A Tap a Crypto Card against the lock ⚠ B You can now use a Construction Card to access the lock.

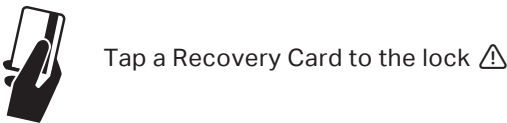
⚠ Crypto cards help calibrate the lock. There are two types of Crypto card. One is the Left Handed Crypto Card and the other is the Right Handed Crypto Card. Please follow the instructions below to find out which Handed Crypto Card to use.

Please face the exterior lockset and stand in the front of the door to see which Crypto Card you need to use. This will depend on which side the door hinges are located.

- A If the door hinges are on the left, please use the Left Handed Crypto Card. B If the door hinges are on the right, please use the Right Handed Crypto Card.



3 RESET TO FACTORY SETTINGS



⚠ Please refer to HOW TO PROGRAM THE LOCKSET to re-program the lock after resetting the lock with a Recovery card.

3 LIGHT INDICATOR NOTIFICATION

To Lock/Unlock	• Flashes green with one beep sound.
Program with a Crypto Card	• Flashes green with a long beep sound
Reset to Factory Settings	• Flashes green three times with three beep sound. Then few seconds later, the green light and the buzzer will last on for 2 seconds.
Key Cover Open	• Flashes red for 30 seconds then flashes green 5 times with 5 beep sound.
Battery Low (please replace with four AA alkaline batteries)	• The green indicator and the buzzer will last on for 2 seconds everytime unlock/lock with RFID.
Power On	• Alternates between a red flash and green flash twice and ends with a beep sound.
Failure to lock	• Flashes red 5 times with 5 beep sounds.

## FCC Statement

This device complies with part 15 of the FCC Rules. Operation is subject to the following two conditions:

(1) This device may not cause harmful interference, and

(2) This device must accept any interference received, including interference that may cause undesired operation.

NOTE: This equipment has been tested and found to comply with the limits for a Class B digital device, pursuant to part 15 of the FCC Rules. These limits are designed to provide reasonable protection against harmful interference in a residential installation.

This equipment generates, uses and can radiate radio frequency energy and, if not installed and used in accordance with the instructions, may cause harmful interference to radio communications. However, there is no guarantee that interference will not occur in a particular installation. If this equipment does cause harmful interference to radio or television reception, which can be determined by turning the equipment off and on, the user is encouraged to try to correct the interference by one or more of the following measures:

- Reorient or relocate the receiving antenna.
- Increase the separation between the equipment and receiver.
- Connect the equipment into an outlet on a circuit different from that to which the receiver is connected.
- Consult the dealer or an experienced radio/TV technician for help.

Changes or modifications not expressly approved by the party responsible for compliance could void the user's authority to operate the equipment.

This equipment complies with FCC radiation exposure limits set forth for an uncontrolled environment.

This equipment should be installed and operated with minimum distance 20cm between the radiator & your body.