

# Wireless Video Transmitter

User Manual



WIT02

# Product Features

High reliability dual band(2.4G and 5G) transmission

Transmission range up to 500 meters

Very low latency(<0.06 seconds)

HDMI in and HDMI loop out

High quality audio transmission

Support 1 transmitter to 4 receivers

Camera Control supported

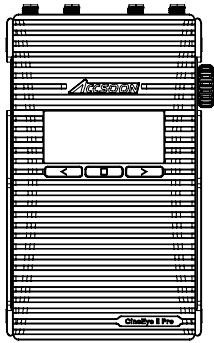
Professional monitoring App for iOS and Android

1.3 inch OLED display

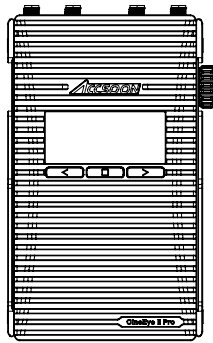
DC and battery power supply supported

Firmware updatable

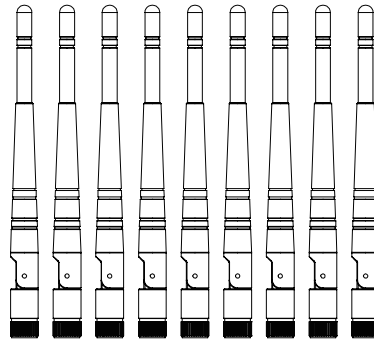
# In the Box



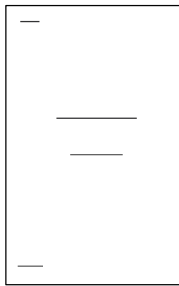
Transmitter x1



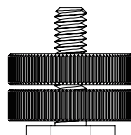
Receiver x1



Antenna x9

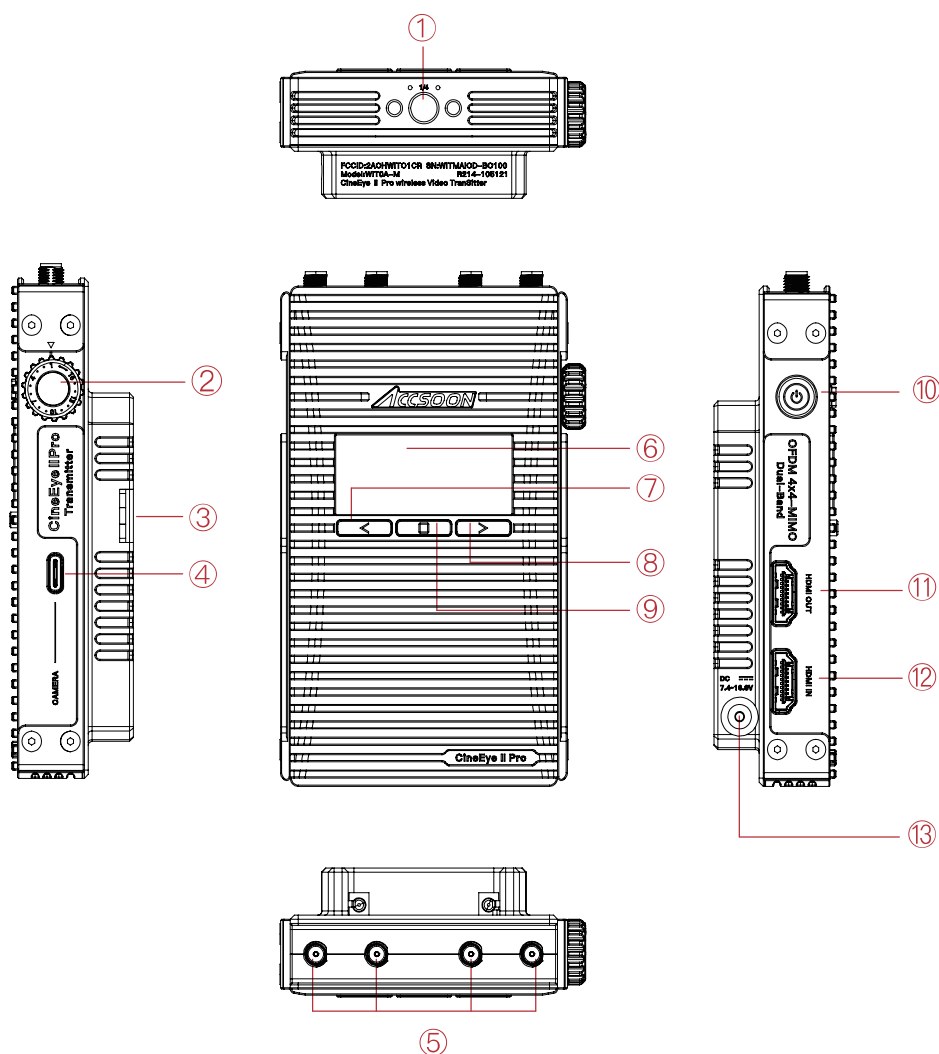


User manual x1



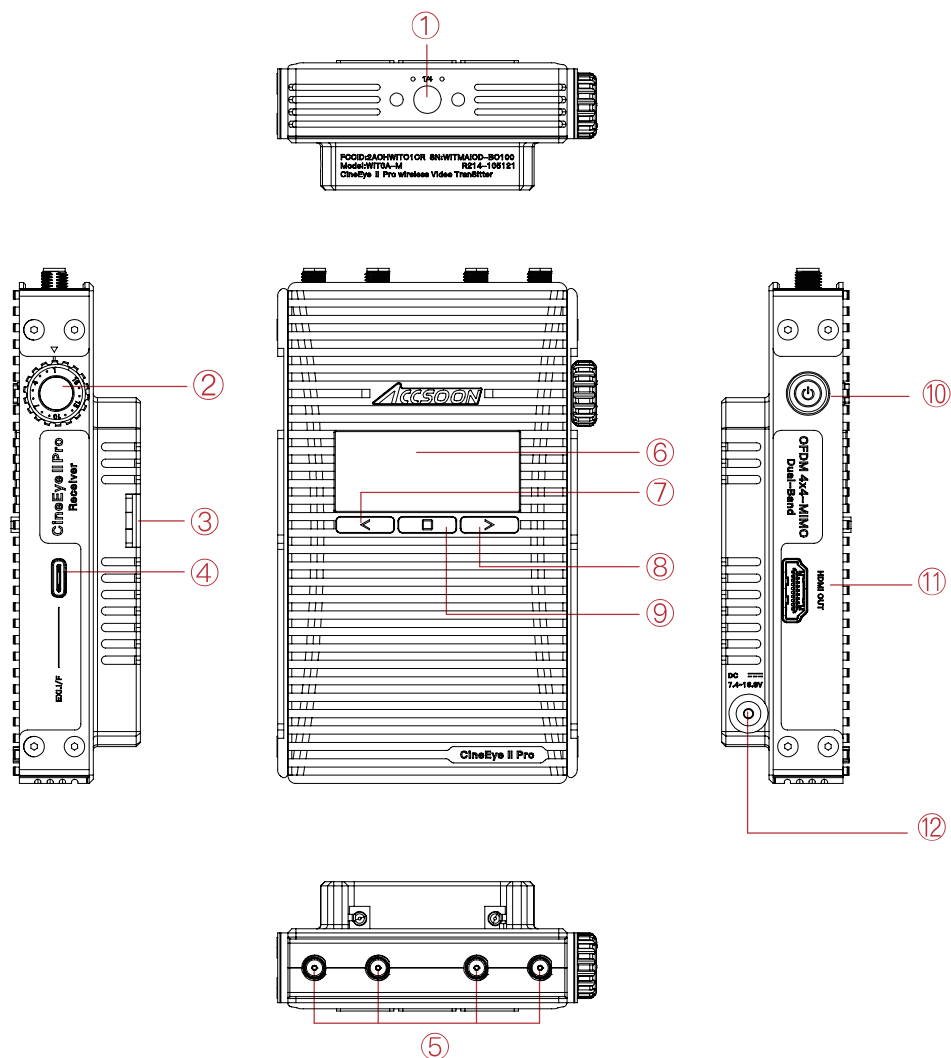
Hot/Cold shoe mount adapter x2

# (Transmitter)



- ① 1/4 Screw      ② Group Knob      ③ Battery Lock      ④ Camera Control Interface
- ⑤ Antenna Connector (RP-SMA Male)      ⑥ 1.3 Inch OLED      ⑦ Left Key      ⑧ Right Key
- ⑨ Menu/OK Key      ⑩ Power Button      ⑪ HDMI Loop Out      ⑫ HDMI In      ⑬ DC Port

# (Receiver)



- |                                   |                 |                |            |
|-----------------------------------|-----------------|----------------|------------|
| ① 1/4 Screw                       | ② Group Knob    | ③ Battery Lock | ④ EXI-IF   |
| ⑤ Antenna Connector (RP-SMA Male) | ⑥ 1.3 Inch OLED | ⑦ Left Key     |            |
| ⑧ Right Key                       | ⑨ Menu/OK Key   | ⑩ Power Button | ⑪ HDMI Out |
| ⑫ DC Port                         |                 |                |            |

# Typical Application

Diagram 1

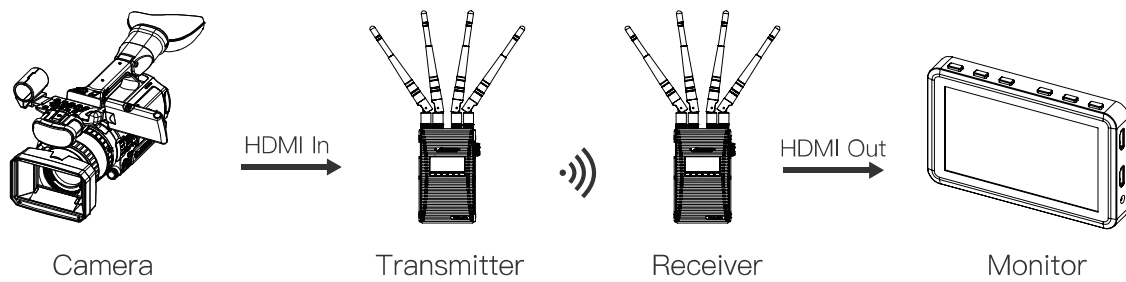
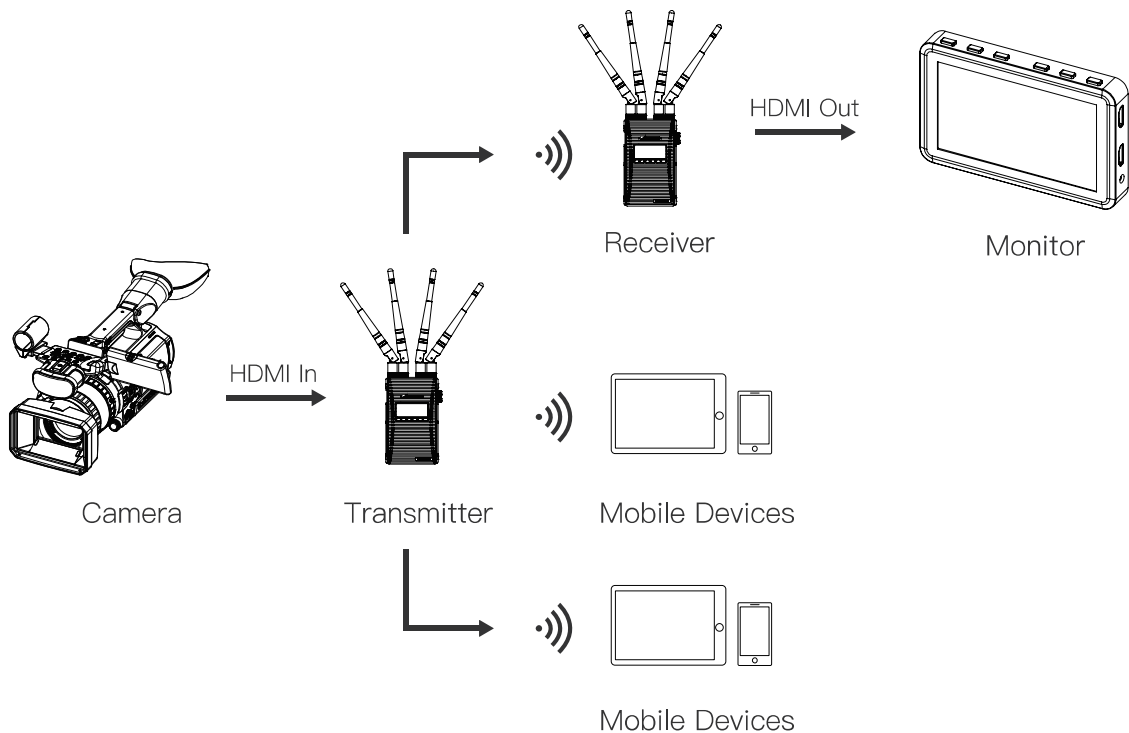
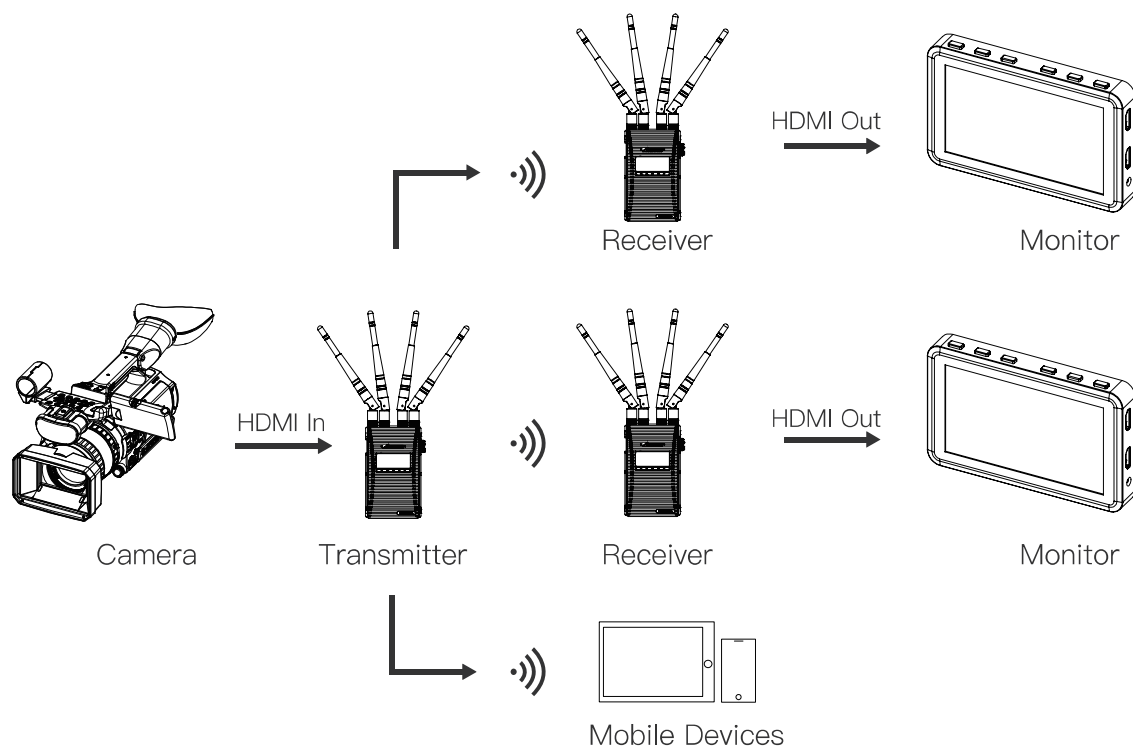


Diagram 2



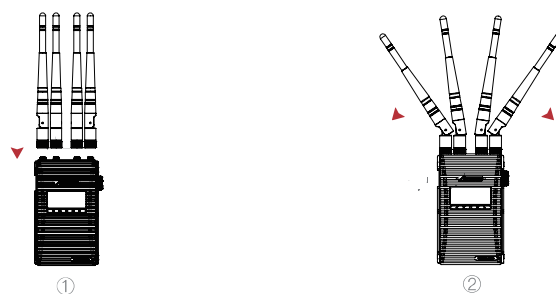
# Typical Application

Diagram 3



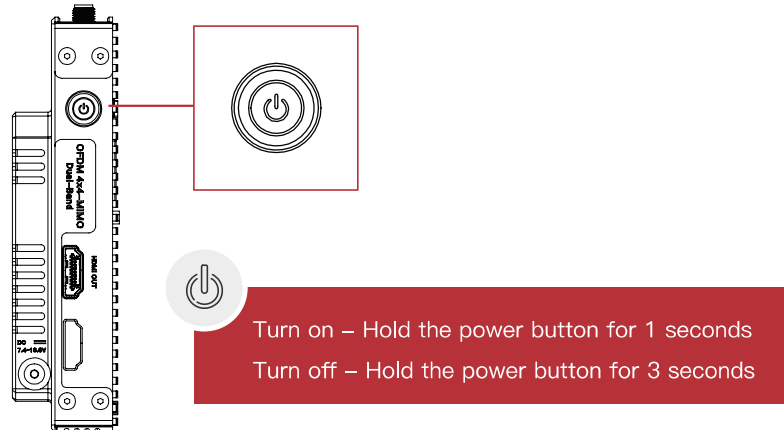
## Install Instructions

1. Install the antennas as demonstrated.
2. Use the hot shoe mount adapter to install the CineEye 2 Pro onto the camera or camera cage.
3. Use a NP-F970/F750/F550 battery or DC source to power the CineEye 2 Pro.
4. Connect camera HDMI output to transmitter HDMI input port.
5. Connect receiver to the monitor(not include in this product).



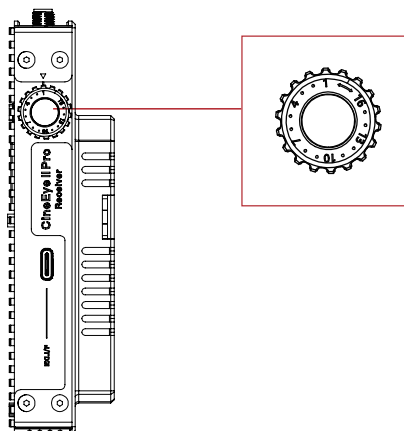
# Operation Instructions

## 01 Turn On/Off



## 02 Group Settings

1. CineEye 2 Pro use a group knob to pair the transmitter and receiver, both the transmitter and the receiver have a group knob on the side. The transmitter and receiver will pair automatically if their group knob at the same position, otherwise they will not pair and can't communicate.
2. If users want to connect more than one receiver to the same transmitter, just need to set all the receiver's group to the same as the transmitter.
3. If two or more groups used at the same time, please make sure different group must have different group settings.

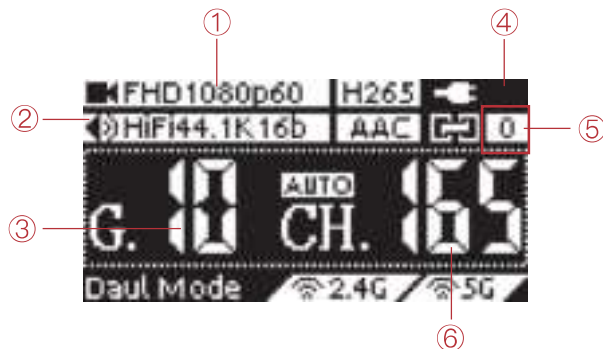


**Note:** If the group setting changed, please pair the transmitter and receiver in short range, or the pair may fail. If group setting changed after power on, the change will take effect after reboot.



# Operation Instructions

## 03 OLED Display



- ① Input video info
- ② Input audio info
- ③ Current group setting
- ④ Battery level/DC input
- ⑤ Connection status
- ⑥ Current 5G WiFi channel

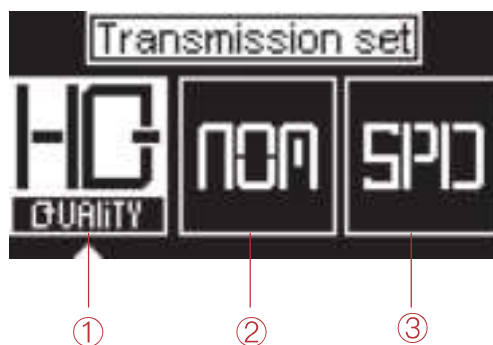
### Connection Status:

Transmitter: The connection status indicate how much devices connected, if no devices connected there will display “0”.

Receiver: The connection status will display “1” if the receiver connected to a transmitter, or will display “0”.

## 04 Data Rate Setting

- ① High Quality Mode
- ② Balance Mode (Default setting)
- ③ Speed Mode



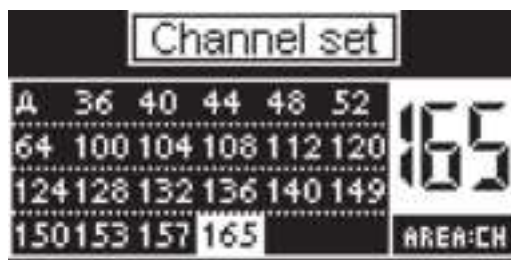
### Setting steps:

Click “Menu” button to enter “Data Rate Setting”->choosing a data rate mode->click “Menu” button to take effect.

# Operation Instructions

## 05 Channel Setting

1. Only the transmitter have “Channel Setting” menu.
2. The default setting is “Auto” which means the transmitter will select a channel with less interference automatically after power on.
3. If users want to select a channel manually, please follow below steps: Click “Menu” button to enter “Channel Setting” menu→choosing a channel→click “Menu” button to confirm→Choosing “Yes” →Click “Menu” button to reboot the transmitter and the setting will take effect.



## 06 Network Reset

Only the transmitter have “Network Reset” menu. Users can reset the WiFi SSID and password to factory settings by “Network Reset” menu.



Setting steps:

Click “Menu” button to enter “Network Reset” menu→choosing “Yes” →click “Menu” button to confirm→Choosing “Yes” →Click “Menu” button to reboot, the SSID and password of the 5G WiFi will be reset to factory settings.

## 07 App Monitoring

### 1. App download

Please download the App (Accsoon Go) from Google play or App store.



### 2. Connect the App to the CineEye 2 Pro transmitter

Launch the Accsoon Go and then select “CineEye 2 Pro”, open the WLAN settings page of the mobile devices, then choose the CineEye 2 Pro WiFi and connect to it, the name of the CineEye 2 Pro WiFi is “CineEye2Pro\_XXXX” and the default password is “12345678”.



### 3. Monitoring

Back to the Accsoon Go connecting page, click “Monitor” to enter the monitoring page and you would be able to monitor the video shot on the camera.

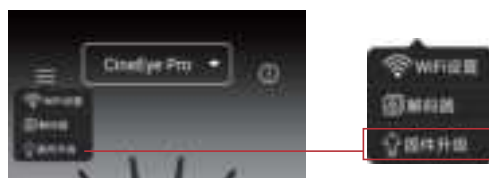


**Note:** CineEye 2 Pro have two WiFi signal, one is 2.4G and another one is 5G, the 2.4G WiFi name is “CineEye2-Pro-GroupX”, please don't connect to this WiFi.

## 08 Firmware Update

### 1. Firmware download

Make sure your mobile phone can access internet, then launch “Accsoon Go” and select “CineEye 2 Pro”, Click “Firmware Update”, then the App will check if there is an update, the App will download the latest firmware automatically if there is an update.



### 2. Update

After the firmware downloaded, connect the CineEye 2 Pro receiver to the transmitter and connect the mobile devices to the transmitter too. Go back to the App and click the “Firmware Update” to update.



1. Make sure the battery level of the CineEye 2 Pro should be above 50%.
2. Don't turn off the CineEye 2 Pro before the update finish.

# Specification

	Transmitter	Receiver
Video Input	HDMI	None
Video Output	HDMI	HDMI
Video Input Format	1080p 23.98/24/25/29.97/30/50/59.94/60fps 1080i 50/59.94/60fps 720p 50/59.94/60fps 480p 59.94/60fps	
Audio	44.1KHz/48KHz 16bit/24bit PCM	
Antenna Connector	4 RP-SMA Male	
Latency	<0.06 seconds(Camera latency not included)	
OLED	1.3 inch OLED	
Transmission Power	17~20dBm	
Transmission Range	500 meters(no obstacle, no interference)	
Camera Control	Yse	None
Power Consumption	4 Watt (Typical)	3.5 Watt(Typical)
APP	iOS8.0 or above/Android 7.0 or above	
Operating Temperature	-10~40℃	
Dimensions	125mm×77mm×31mm(Antenna not included)	
Weight	225g(Antenna not included)	

# Warranty

## 01 Warranty Period

1. If there is any quality problem happening to our products within 15 days after you received, we will be responsible for giving free maintain or replace for free.
2. The warranty time is one year. Within warranty period, if under the usage of instruction sheet, for any product problem, we will offer repair service for free(the accessories and cables warranty time is 3 months).

## 02 Warranty Service Won't be given under the following circumstance

1. Unauthorized maintenance, misuse, collision, liquid infiltration, modification.
2. Incorrect use of the product, tearing up or altering label and warranty sticker.
3. It has already exceeded the period of warranty.
4. Damage due to fire, flood disaster, light stroke and alike.

## 03 Process to get warranty service

1. Customer shall contact the local dealer to solve their problem. If there is none, please contact us through our E-mail ([support@accsoon.com](mailto:support@accsoon.com)) or our website ([www.accsoon.com](http://www.accsoon.com)). You will get detailed Information from them, we reserve the ultimate right to review the damaged products.

# Q&A

## 01 Receive can't connect to Transmitter

1. Please make sure the transmitter and receiver have the same group setting.
2. Please check if the antenna tighten well.

## 02 No video displayed

1. Please check if the HDMI cable plugged into the "HDMI In" port of the transmitter.
2. Please check if the output format of the camera compatible with the CineEye 2 Pro or check if the camera have output the video via the HDMI port.

## 03 Video is choppy

1. Please check if the antenna tighten well.
2. Please make sure there is no cable around the antenna.
3. Please switch to another channel manually.

## 04 Mobile devices can't see the CineEye 2 Pro WiFi

1. Please check if your mobile devices support 5G WiFi.

## 05 Mobile devices can't connect to CineEye 2 Pro

1. CineEye 2 Pro have two WiFi, one is 2.4G and another one is 5G, the 2.4G WiFi name is "CineEye2-Pro-GroupX", please don't connect to this WiFi.

#### FCC Caution.

This device complies with part 15 of the FCC Rules. Operation is subject to the following two conditions:

- (1) This device may not cause harmful interference, and
- (2) this device must accept any interference received, including interference that may cause undesired operation.

Any Changes or modifications not expressly approved by the party responsible for compliance could void the user's authority to operate the equipment.

Note: This equipment has been tested and found to comply with the limits for a Class B digital device, pursuant to part 15 of the FCC Rules. These limits are designed to provide reasonable protection against harmful interference in a residential installation. This equipment generates uses and can radiate radio frequency energy and, if not installed and used in accordance with the instructions, may cause harmful interference to radio communications. However, there is no guarantee that interference will not occur in a particular installation. If this equipment does cause harmful interference to radio or television reception, which can be determined by turning the equipment off and on, the user is encouraged to try to correct the interference by one or more of the following measures:

- Reorient or relocate the receiving antenna.
- Increase the separation between the equipment and receiver.
- Connect the equipment into an outlet on a circuit different from that to which the receiver is connected.
- Consult the dealer or an experienced radio/TV technician for help.

This equipment complies with FCC radiation exposure limits set forth for an uncontrolled environment. This equipment should be installed and operated with minimum distance 20cm between the radiator & your body.