

User Guide

Doorbell Wired

ring



Included hardware.

Bag Hardware

A



3x Mounting Screws



3x Wall Anchors

B



2x Security Screws

C



1x Jumper Cable



2x Wire Extenders



2x Wire Nuts

Find your doorbell chime.

Your Doorbell Wired is designed to replace an existing doorbell button, and gets its power from the doorbell system.

Ring your existing doorbell and listen for the chime. If it rings, we know your existing doorbell system is working.

Follow the sound to find your chime and make a mental note of the location. We'll return to your chime soon.



Don't have an existing doorbell? You can power your Doorbell Wired Pro directly using our Plug-in Adapter. Visit ring.com/accessories to learn more.

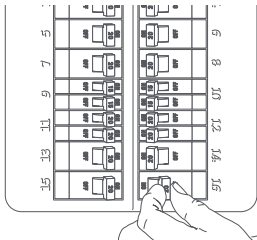
Turn off power at the breaker.

This is essential to keeping you and your new Ring Doorbell safe.

If you're not sure which breaker controls your doorbell chime, turn off the master breaker for your home, or contact an electrician.



You'll be working with electrical wires during the install process. If you are uncomfortable or inexperienced with doing so, consult with a licensed electrician.



Grab the included Jumper Cable.

The Jumper Cable bypasses and disables your existing doorbell chime, and must be installed before you install your Ring Doorbell.

Your Doorbell Wired is compatible with doorbell systems supplying 8–24 volts AC, at 50 or 60Hz, 40VA max.

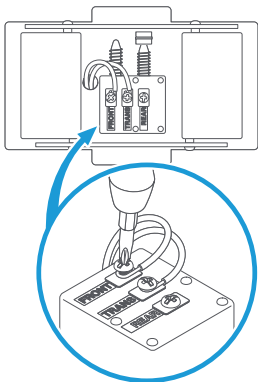


Remove the cover from your doorbell chime.

After you've located your doorbell chime and turned off power at the breaker, remove the cover from your chime and set it aside for now.

Loosen the "Front" and "Trans" terminal screws.

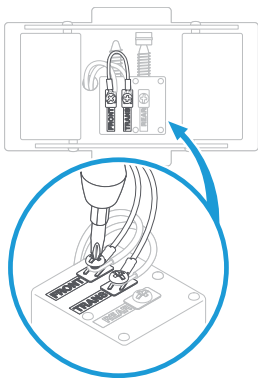
Make sure to keep the existing doorbell wires in place.



Connect the Jumper Cable.

Connect one end of the Jumper Cable to the "Front" terminal, and the other to the "Trans" terminal. It doesn't matter which wire you connect to which terminal.

Then re-tighten the terminal screws.



Uninstall your existing doorbell button.

Remove your doorbell from the wall.

Disconnect the wires. Make sure they don't fall back inside your wall so you can access them later.

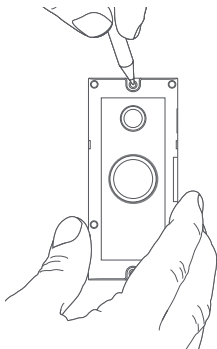
Remove the faceplate.

Grasp the bottom of the faceplate and pull to remove.



Mark the screw holes.

Using your Ring Doorbell as a template, mark the location of the two mounting holes on your wall.



Install the anchors. (optional)

On stucco, brick, or concrete, use a ¼" masonry bit to drill holes in your wall, then insert the included wall anchors.

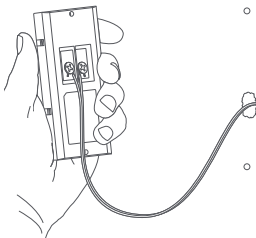
(If you're installing on wood or siding, you can skip this step.)



Connect the doorbell wires.

Loop one doorbell wire around each of the screw terminals on the rear of your Ring Doorbell then tighten the terminals to secure.

If your doorbell wires are too short to reach your new Ring Doorbell, you can attach the included wire extenders using the included wire nuts.



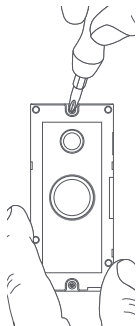
Screw in your Ring Doorbell.

Mount your Ring Doorbell with the two included mounting screws.

Be sure to feed any excess wiring back into the wall first. If you used the wire nuts, push them through the hole as well.

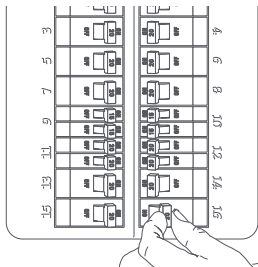


DO NOT USE any screw other than the included long mounting screws when securing your Ring Doorbell.



Restore power at the breaker.

It may take a moment for your Ring Doorbell to power on. You'll know it's ready once it lights up and speaks to you.



Download the Ring App.

The Ring App walks you through setting up and managing your Ring Doorbell.

Search for “Ring” in one of the app stores below, or visit ring.com/app



Set up your Ring Doorbell.

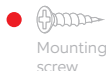
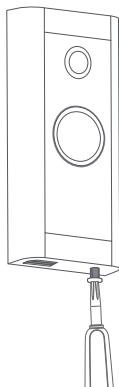
In the Ring app, select **Set Up a Device** and follow the in-app instructions.

Secure your Ring Doorbell.

Re-attach the faceplate, then use the included screwdriver to drive the small security screw into the bottom of your Ring Doorbell.



DO NOT USE any screw other than the included short security screw when securing your Ring Doorbell.



Review, share and download.

Your new device comes with a free 30-day trial of **Ring Protect** video recording service.

To continue your subscription and save your videos, please visit ring.com/protect-plans



What is Ring Protect?

Ring Protect is a subscription service that stores videos from your Ring devices.

Why do I want it?

Ring lets you interact with visitors and monitor your property in real time, while Ring Protect allows you review and share those videos *anytime*.

How much does it cost?

Ring Protect Basic covers one Ring device for \$3 USD/month or \$30 USD/year.*

Ring Protect Plus covers all Ring devices at one property, and costs \$10 USD/month or \$100 USD/year.**

How do I sign up?

Simply log into your Ring account at ring.com/protect-plans, and follow the on-screen instructions.

*\$5 CAD per month or \$50 CAD per year

**\$15 CAD per month or \$150 CAD per year



For additional help, visit
ring.com/help

Or give us a call:

US 1 800 656 1918

Canada 1 855 300 7289

Worldwide +1 310 929 7085

For a list of all our customer
support numbers, visit
ring.com/callus

For information on our warranty, theft
protection, and Ring Protect Plans, see
ring.com/legal

© 2020 Ring LLC or its affiliates.

Ring and all related marks are trademarks
of Ring LLC or its affiliates.

Quick Start

1. **Open the Ring app and select Set Up Device.**

Then follow the in-app instructions.

2. **Scan this code.**

This identifies your Ring device to make setup fast and easy.



QR+FR



For additional help, visit ring.com/help

ring



Important Product Information



ring



IMPORTANT PRODUCT INFORMATION



SAFETY INFORMATION: FAILURE TO FOLLOW THESE SAFETY INSTRUCTIONS COULD RESULT IN FIRE, ELECTRIC SHOCK, OR OTHER INJURY OR DAMAGE.

Your device can withstand outdoor use and has been tested to withstand water projected through a 6.3mm nozzle at a volume of 12.5 liters per minute and a pressure of 30 kPa at a distance of 3 meters for at least 3 minutes. However, your device is not intended for underwater use. To protect against electric shock, do not intentionally submerge or immerse your device, battery, or adapter (not included) in water or expose your device or adapter to other liquids. Do not spill any food or beverages on your device, battery, or adapter. Do not attempt to clean or polish your device, battery, or adapter with or expose your device, battery, or adapter to oil, lotion, or other abrasive substances. Do not expose your device, battery, or adapter to salt water or other conductive liquids. Do not expose your device, battery, or adapter to pressurized water, high velocity water, or extremely humid conditions (such as a steam room). If your device, battery, or adapter gets wet, carefully unplug all cables without getting your hands wet and wait for it to dry completely before plugging it in again. Do not attempt to dry your device, battery, or adapter with an external heat source, such as a microwave oven or a hair dryer. To avoid risk of electric shock, do not touch your device, battery, or adapter or any wires connected to your device during a lightning storm while your device, battery, or adapter is plugged in. If your device, battery, or adapter appears to be damaged, discontinue use immediately.

Protect your device from direct sunlight. Install the device at dry locations and protect it against rain and humidity.

Use only accessories supplied with your device, or specifically marketed for use with your device, to power your device. Use of third-party accessories may impact your device's performance. In limited circumstances, use of third-party accessories may void your device's limited warranty. In addition, use of incompatible third party accessories may cause damage to your device or the third-party accessory. Read all safety instructions for any accessories before using with your device.

Protect the device from direct sunlight. Install the device at dry locations and protect it against rain and humidity. The device may not get contact to salt water or other conductive liquids. The device must be charged only within a building in a dry state.



SAFELY CONNECTING YOUR RING VIDEO DOORBELL WIRED TO YOUR HOME'S ELECTRICAL WIRING

If you install the Ring Video Doorbell Wired where a doorbell is already in use and you connect the Ring Video Doorbell Wired to your home's doorbell electrical wiring, you must turn off the existing doorbell's power source at your home's circuit breaker or fuse and test that the power is off BEFORE removing the existing doorbell, installing the Ring Video Doorbell Wired, or touching electrical wires. Failure to turn off circuit breaker or fuse so could result in FIRE, ELECTRIC SHOCK, or OTHER INJURY or DAMAGE.

More than one disconnect switch may be required to turn off the equipment before servicing.

To test whether you have successfully de-energized your existing doorbell's power source, press your doorbell several times to confirm that the power is off.

If the electrical wiring in your home does not resemble any of the diagrams or instructions provided with Ring Video Doorbell Wired, if you encounter damaged or unsafe wiring, or if you are unsure or uncomfortable in performing this installation or handling electrical wiring, please consult a qualified electrician in your area.

Only use accessories & power sources with LPS or PS2 certification that are recommended by the manufacturer. Use of third-party accessories may lead to damage to your Ring Video Doorbell Wired or the accessory and may cause fire, electric shock, or injury.

Product Specifications

Device Name: Video Doorbell Wired

Model Number: 5AT3T5

Electrical Rating: 10-24 VAC or 24VDC

Temperature Rating: -5°F to 120°F (-20°C to 50°C)

RECYCLING YOUR DEVICE PROPERLY

In some areas, the disposal of certain electronic

devices is regulated. Make sure you dispose of, or recycle, your device in accordance with your local laws and regulations. For information about recycling your device, go to www.amazon.com/devicesupport.

Terms of Service and Warranty

By purchasing or using the product, you agree to the Terms of Service found at ring.com/terms.

For information on our warranty, theft protection, and Ring Protect Plans, see ring.com/legal

For Consumers in the USA

This device complies with Part 15 of the FCC Rules. Operation is subject to the following two conditions: (1) this device may not cause harmful interference, and (2) this device must accept any interference received, including interference that may cause undesired operation.

NOTE: This equipment has been tested and found to comply with the limits for a Class B digital device, pursuant to Part 15 of the FCC Rules. These limits are designed to provide reasonable protection against harmful interference in a residential installation. This equipment generates, uses and can radiate radio frequency energy and, if not installed and used in accordance with the instructions, may cause harmful interference to radio communications.

However, there is no guarantee that interference will not occur in a particular installation. If this equipment does cause harmful interference to radio or television reception, which can be determined by turning the equipment off and on, the user is encouraged to try to correct the interference by one or more of the following measures:

- Reorient or relocate the receiving antenna.
- Increase the separation between the equipment and receiver.
- Connect the equipment into an outlet on a circuit different from that to which the receiver is connected.
- Consult the dealer or an experienced radio/TV technician for help.

Pursuant to Section 15.21 of the FCC rules, changes or modifications to a Product by the user that are not expressly approved by the party responsible for compliance could void the user's authority to operate the equipment.

The device meets the FCC Radio Frequency Emission Guidelines. Information on the product is on file with the FCC and can be found by inputting such Product's FCC ID (which can be found on the device) into the FCC ID Search form available at

<https://www.fcc.gov/oet/ea/fccid>.

The party responsible for FCC compliance is: Ring LLC, 1523 26th St, Santa Monica, CA USA, 90404

FCC Radiation Exposure Statement

This device complies with FCC radiation exposure limits set forth for an uncontrolled environment and it also complies with Part 15 of the FCC RF Rules. This equipment must be installed and operated in accordance with provided instructions and the antenna(s) used for this transmitter must be installed to provide a separation distance of at least 20 cm from all persons and must not be co-located or operating in conjunction with any other antenna or transmitter. End-users and installers must be provided with antenna installation instructions and consider removing the no-collocation statement.

For Consumers in Canada

This device contains licence-exempt transmitter(s)/receiver(s) that comply with Innovation, Science and Economic Development Canada's licence-exempt RSS(s). Operation is subject to the following two conditions:

- (1) This device may not cause interference.
- (2) This device must accept any interference, including interference that may cause undesired operation of the device.

Information Regarding Exposure to Radio Frequency Energy

This equipment complies with IC RSS-102 RF exposure limits set forth for an uncontrolled environment.

Radio Frequency Compliance

In order to protect human health, this device meets the thresholds for exposure of the general public to electromagnetic fields according to Council Recommendation 1999/519/EC.

This transmitter must not be co-located or operating in conjunction with any other antenna or transmitter. This equipment should be installed and operated with a minimum distance of 20 centimeters between the radiator and your body. Your Ring Video Doorbell Wired is designed to replace an existing doorbell button, and gets its power from the doorbell system.



ring

1523 26th St.
Santa Monica, CA 90404



© 2020 Ring LLC or its affiliates.
Ring and all related marks are trademarks
of Ring LLC or its affiliates.

XX-XXXXXX-XX

