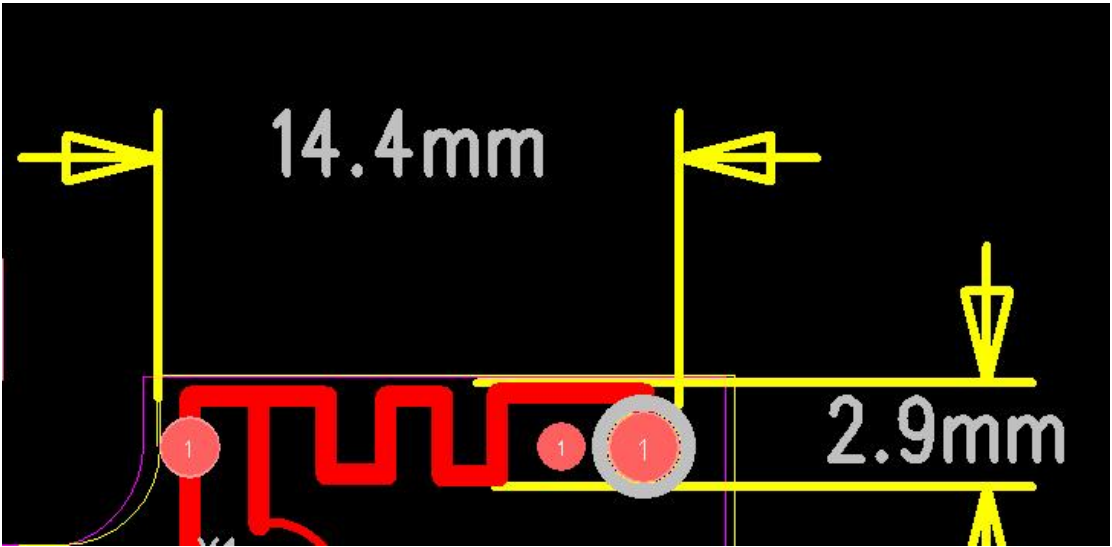


1. Antenna Description:

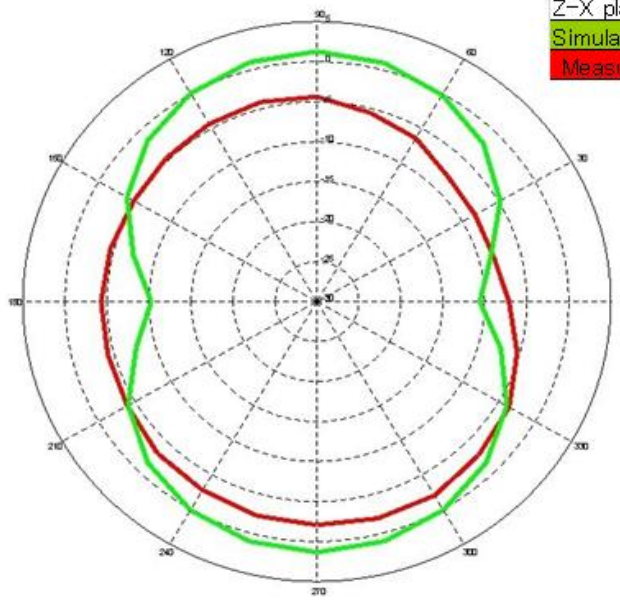
Antenna type	PCB Antenna
Antenna peak gain	2 dBi
Frequency range	2.402GHz~2.480GHz
Connect type	Direct Connect
Manufacture	Shenzhen Jaskey Technology Limited 4/Floor Building 1 of Xingji Center DanzhuTou Industrial Area, Longgang District , Shenzhen ,China

2. Picture of antenna



3. Antenna Radiation Pattern
Radiation pattern @2.402GHz

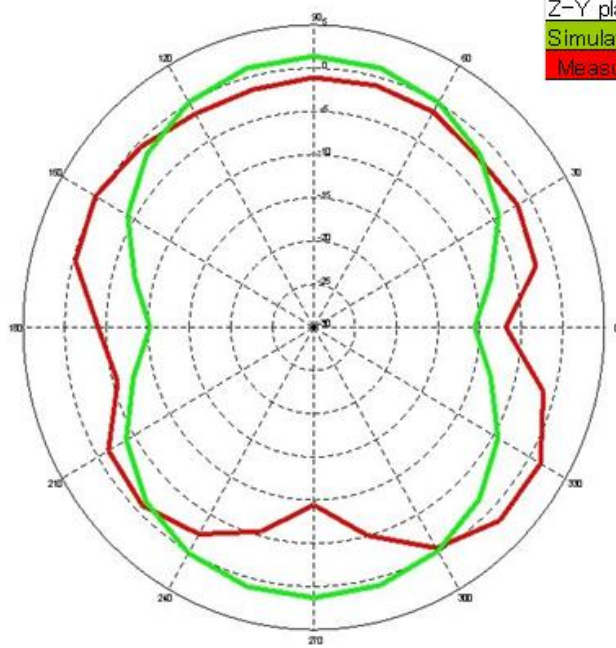
Z-X Plane



Z-X plane	Avg.	Max.	Min.
Simulation result	-2.8	1.39	-10.58
Measurement result	-4.5	-1.90	-8.24

2402MHz

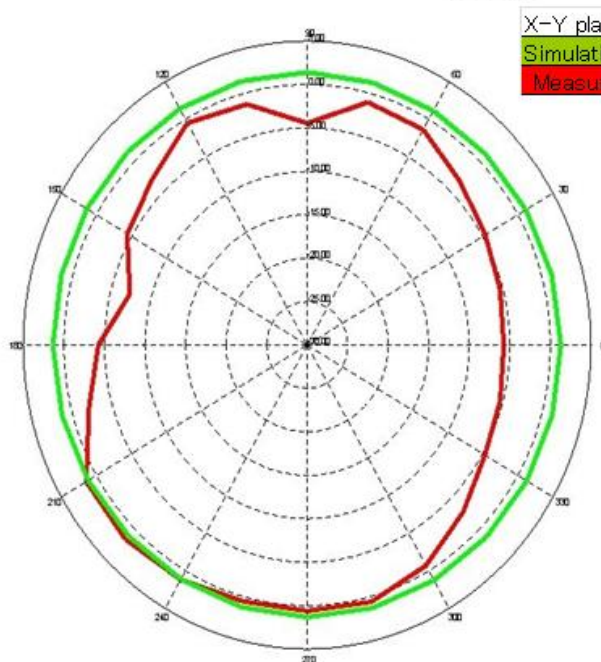
Z-Y Plane



Z-Y plane	Avg.	Max.	Min.
Simulation result	-2.8	1.45	-10.58
Measurement result	-2.1	1.7	-9.42

2402MHz

X-Y Plane

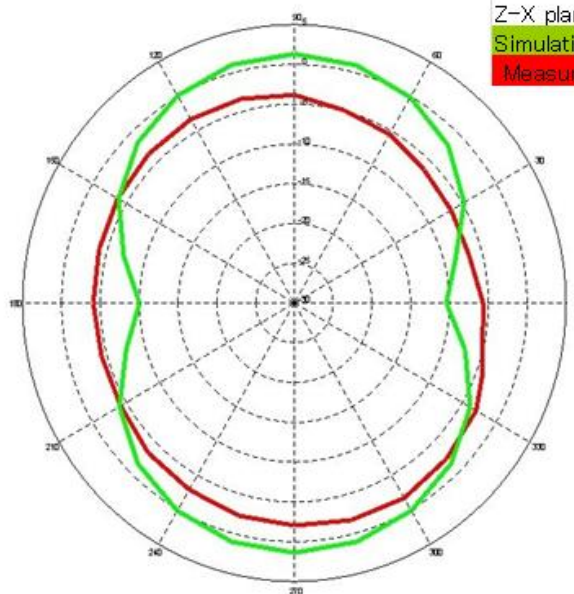


X-Y plane	Avg.	Max.	Min.
Simulation result	1.3	1.5	1.15
Measurement result	-2.3	1.7	-7.34

2402MHz

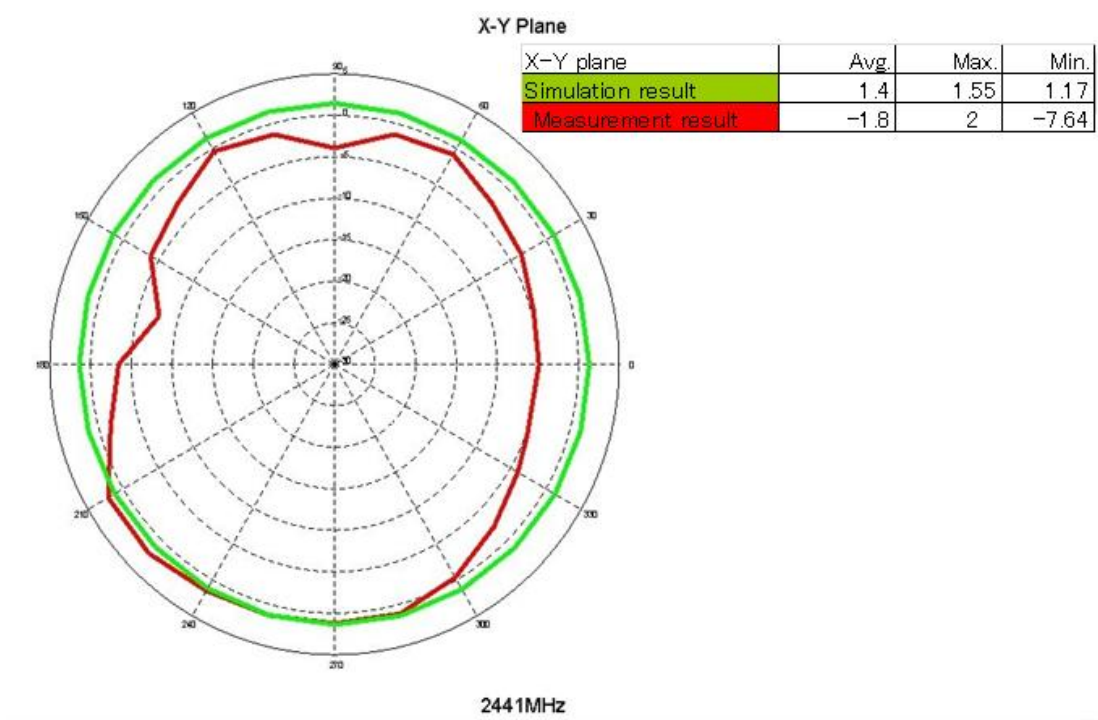
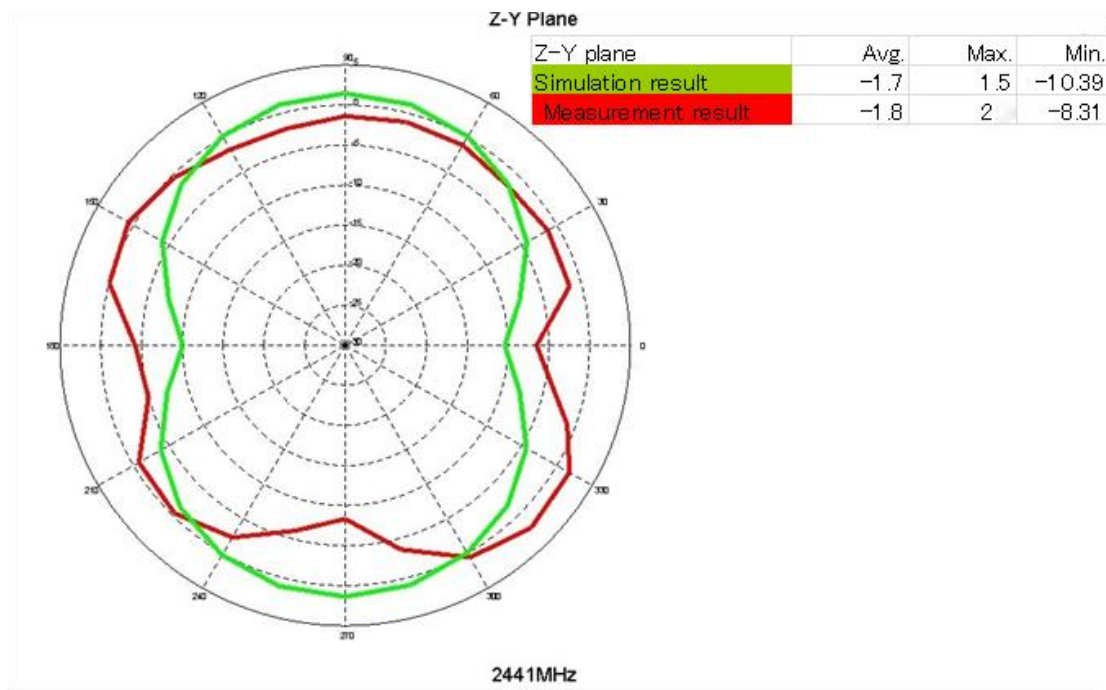
Radiation pattern @2.441GHz

Z-X Plane



Z-X plane	Avg.	Max.	Min.
Simulation result	-2.7	1.44	-10.39
Measurement result	-3.9	-1.65	-6.68

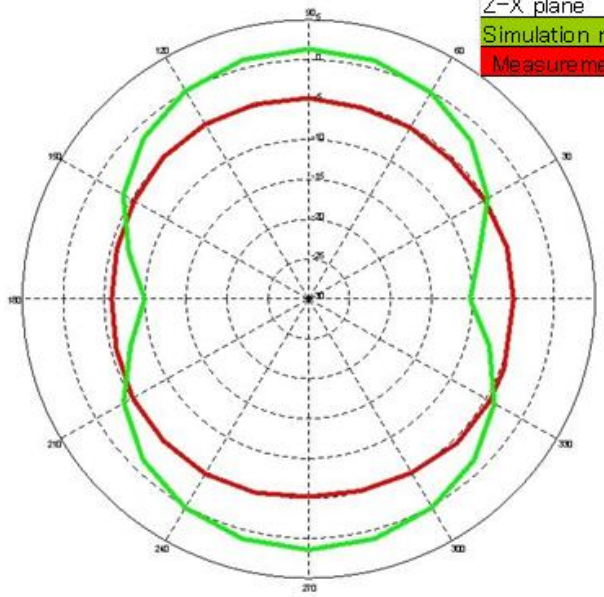
2441MHz



Radiation pattern @2.480GHz

Z-X Plane

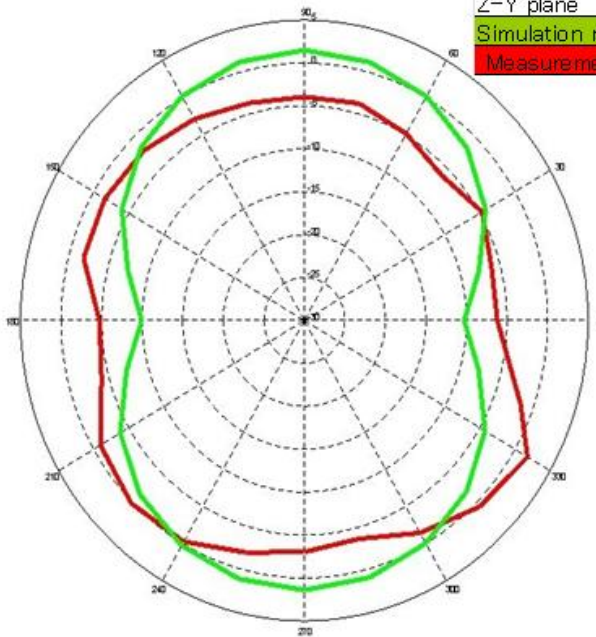
Z-X plane	Avg.	Max.	Min.
Simulation result	-2.7	1.5	-10.25
Measurement result	-5.0	-4.35	-5.88



2480MHz

Z-Y Plane

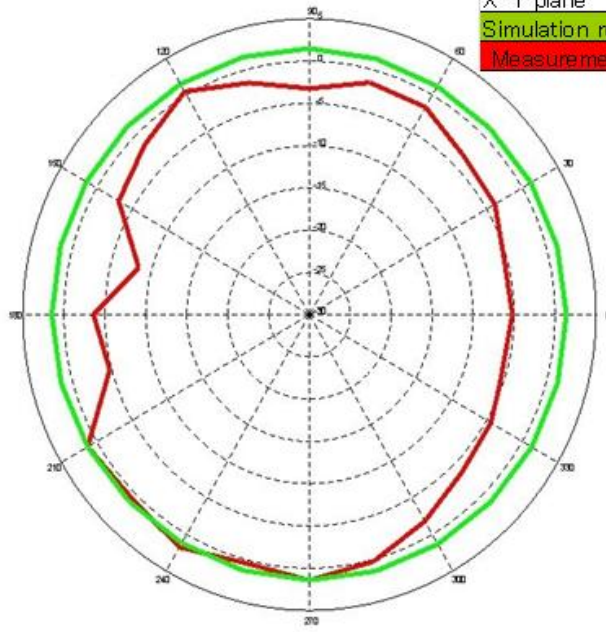
Z-Y plane	Avg.	Max.	Min.
Simulation result	-2.7	1.55	-10.25
Measurement result	-2.8	1.82	-6.16



2480MHz

X-Y Plane

X-Y plane	Avg.	Max.	Min.
Simulation result	1.4	1.61	1.22
Measurement result	-2.3	1.82	-8.38



2480MHz