

An exploded view of a handheld electronic device, likely a portable music player or small PDA, laid out on a blue surface. The components are arranged in a grid-like fashion. At the top left is a small red rectangular piece. Below it are two black plastic pieces. In the center are three black plastic pieces of varying sizes. To the right of these are two more black plastic pieces. At the bottom left is a black plastic piece with a red cable attached. In the center bottom are two black plastic pieces. At the bottom right is a black plastic piece with a red cable attached. To the right of this is a green printed circuit board (PCB) with various electronic components, including a small circular component and a larger rectangular component. A metal ruler is placed horizontally across the top of the components, and another metal ruler is placed vertically along the left side of the components. The ruler on the left shows measurements in inches (0 to 12) and centimeters (0 to 30). The ruler at the top shows measurements in centimeters (0 to 40).

A photograph of a disassembled mobile phone. The black plastic back cover is on the left, featuring a circular camera lens and a red plastic latch. To its right is the green printed circuit board (PCB) with various electronic components, including a SIM card slot. A silver circular battery is also visible. A metal ruler is placed horizontally below the components, showing measurements in centimeters. The background is a solid blue surface.

This report shall not be reproduced except in full, without the written approval of Shenzhen LCS Compliance Testing Laboratory Ltd.
Page 1 of 3

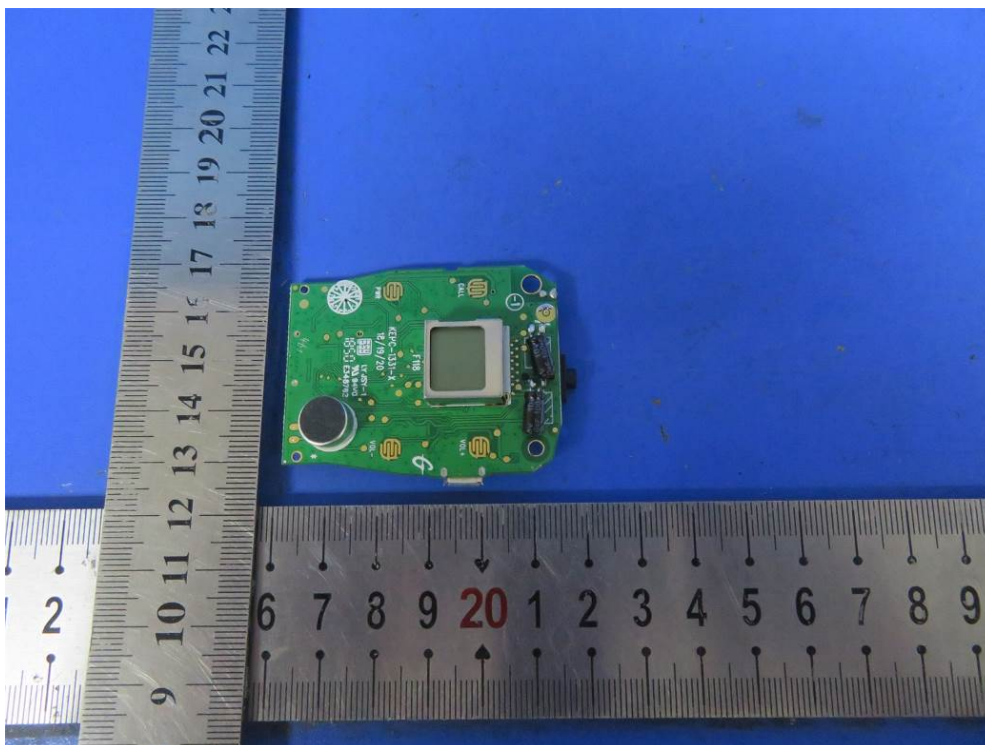


Fig.3



Fig.4

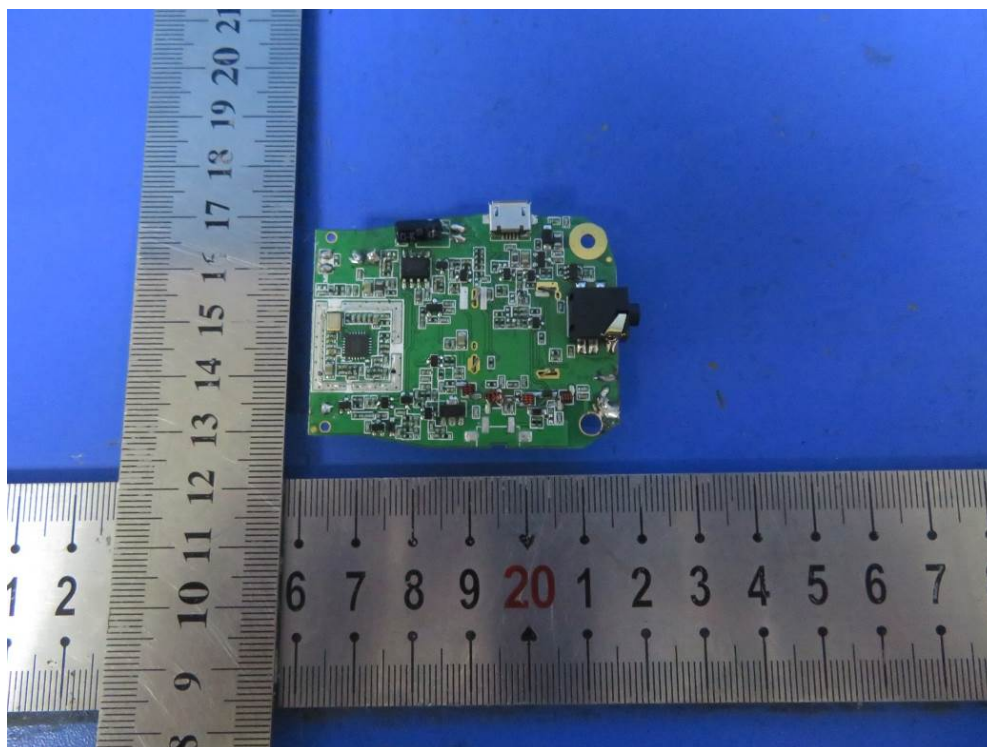


Fig.5

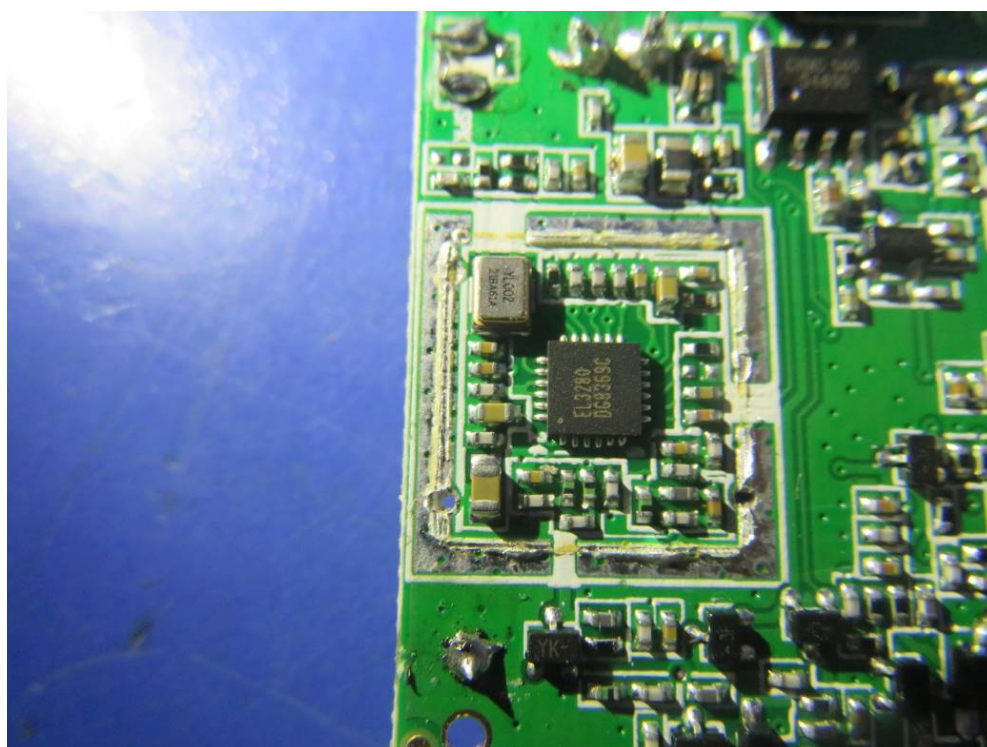


Fig.6