

APPENDIX G:

EUT PHOTOS



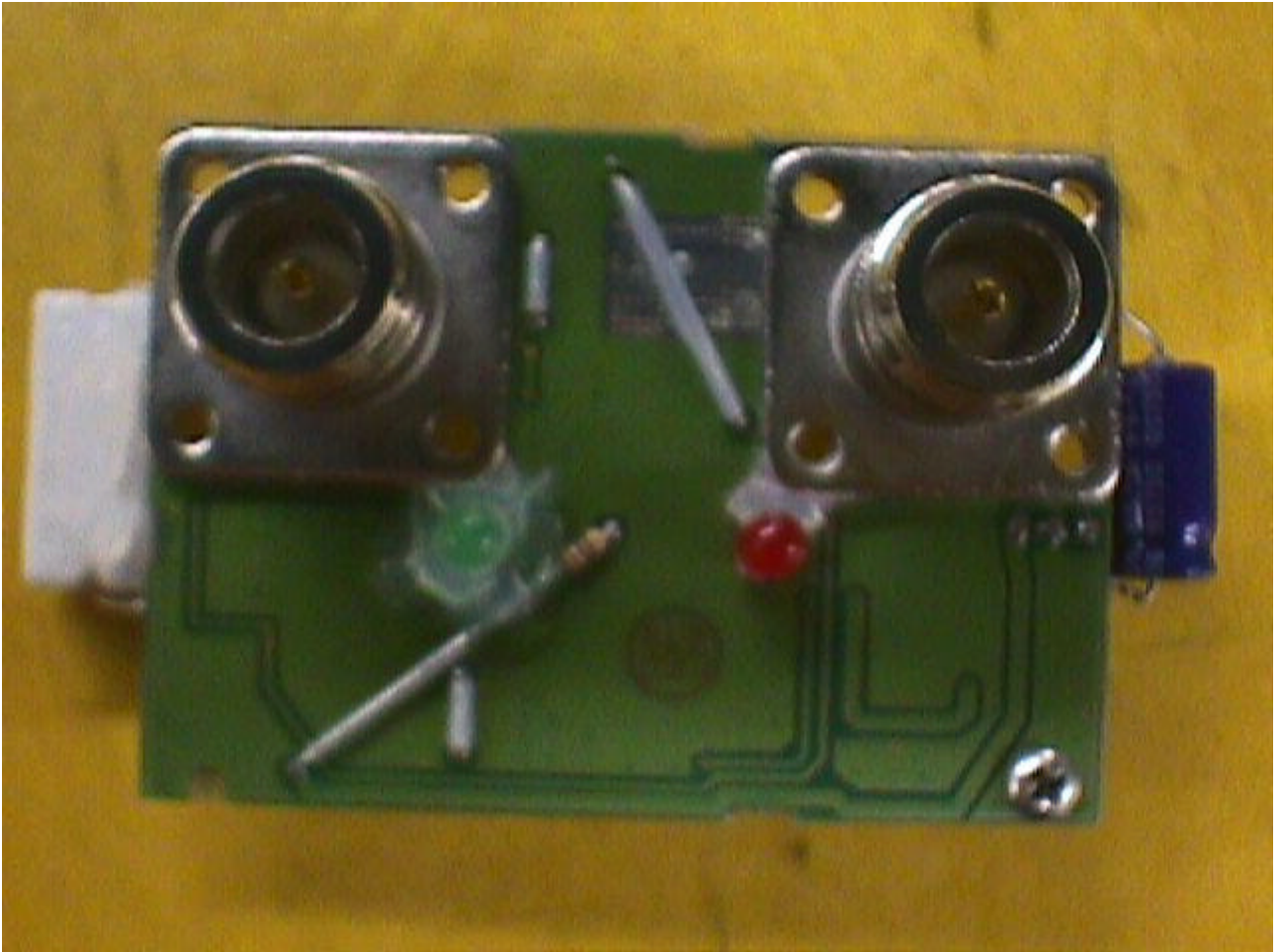
G1: AMPLIFIER (TOP VIEW)



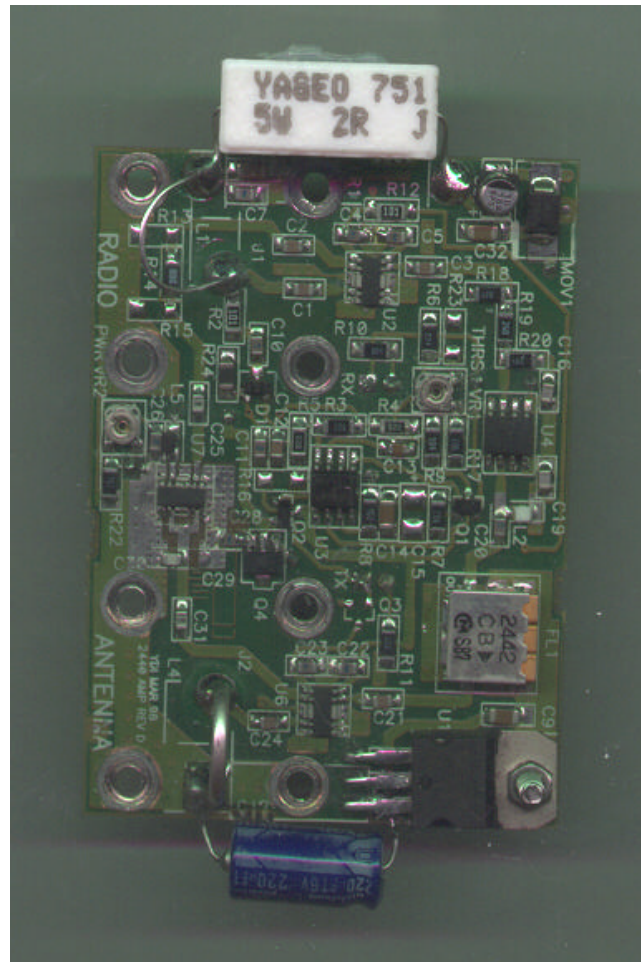
G2: AMPLIFIER (BOTTOM VIEW)



G3: AMPLIFIER TOP VIEW AND INSIDE VIEW OF CHASSIS



G4: AMPLIFIER SOLDER SIDE WITH INPUT PORT AND OUTPUT PORT CONNECTORS VIEW



G5: AMPLIFIER COMPONENT SIDE VIEW



G6: DC POWER INJECTOR (TOP VIEW)



G7: DC POWER INJECTOR (BOTTOM VIEW)



G8: DC POWER INJECTOR INSIDE CHASSIS VIEW



G9: DC POWER INJECTOR SOLDER SIDE VIEW



G10: DC POWER INJECTOR COMPONENT SIDE VIEW



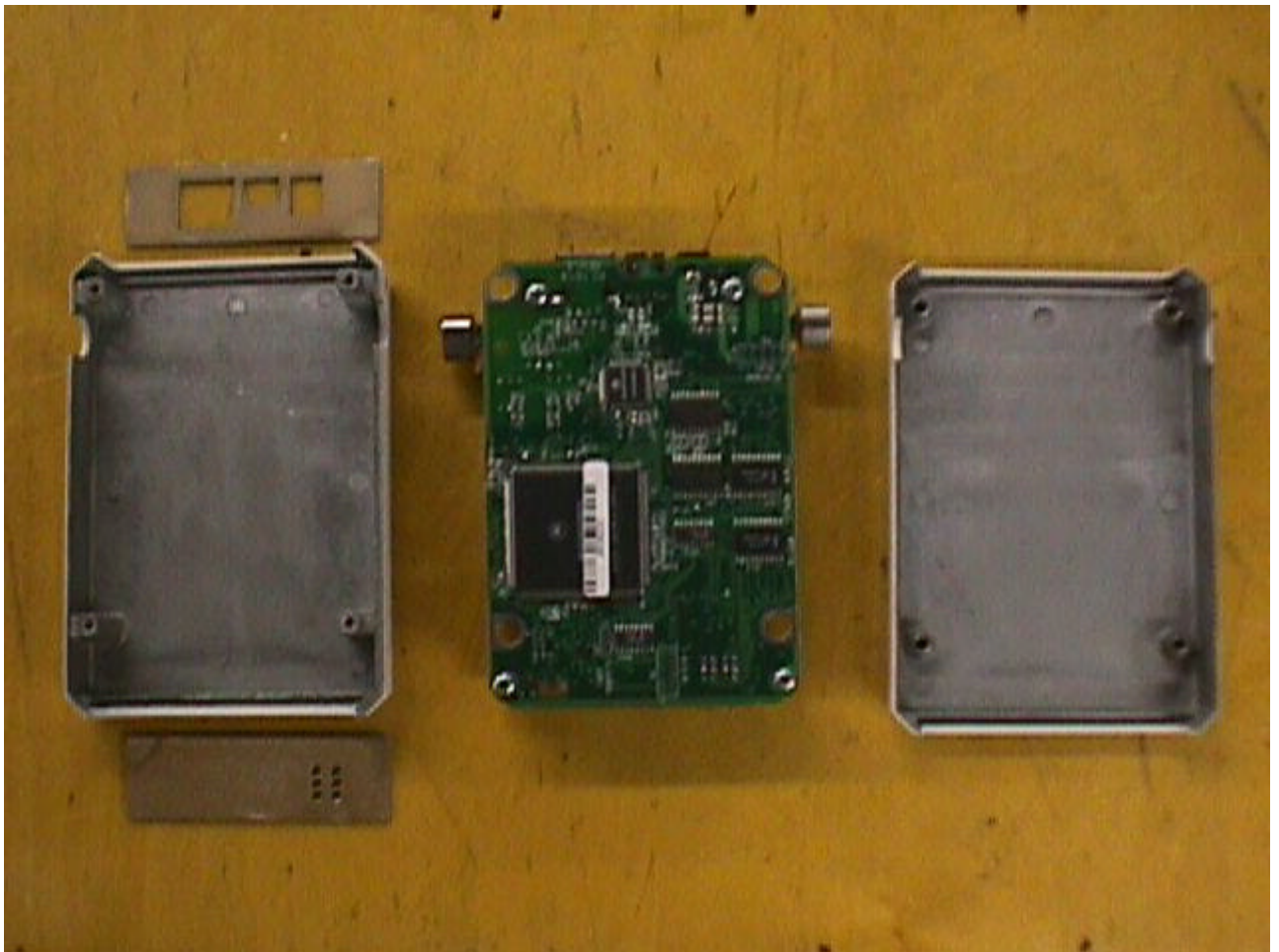
G11: 4" COAX CABLE AND FILTER



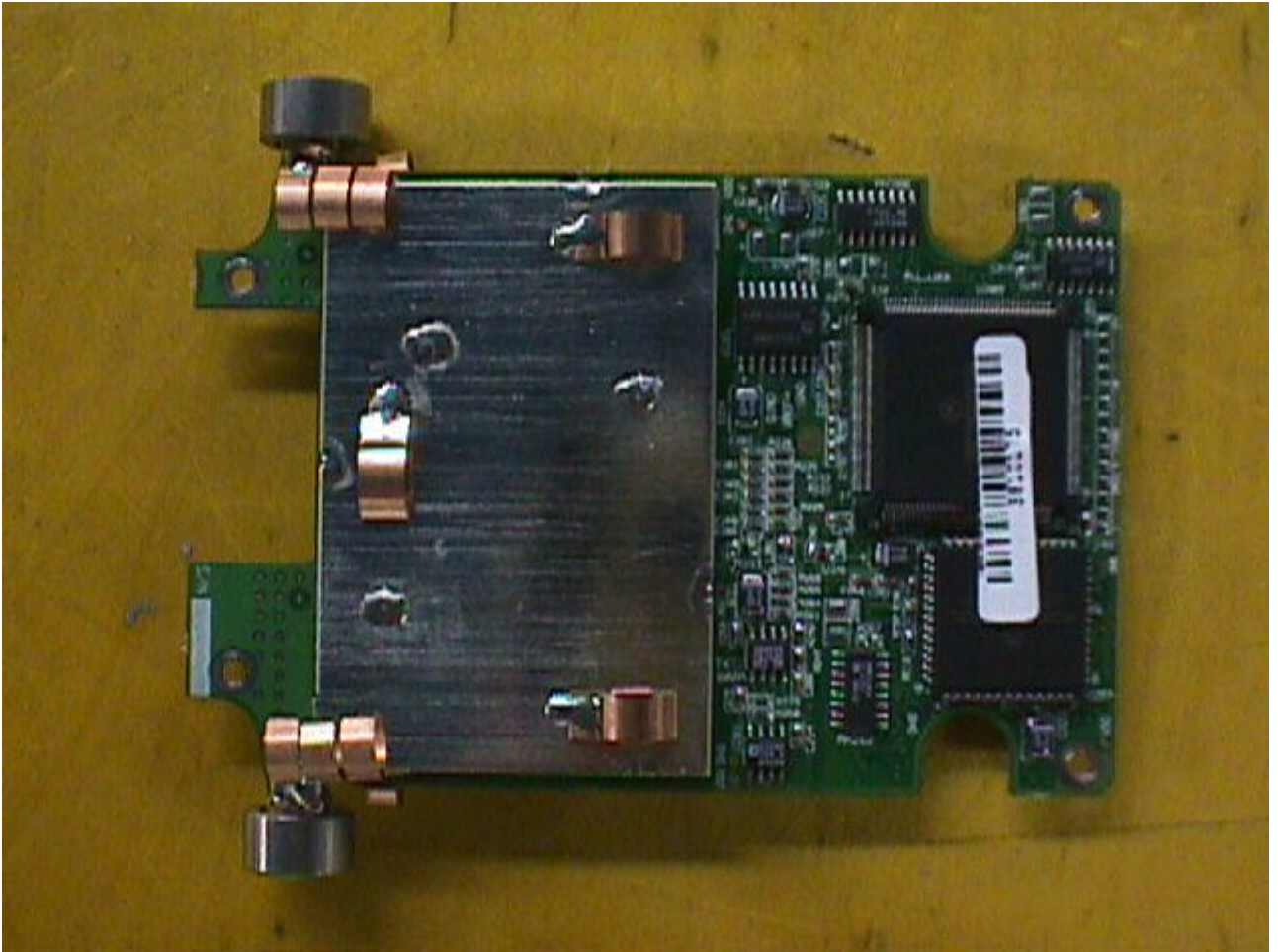
G12: INJECTOR AC/DC POWER Supply



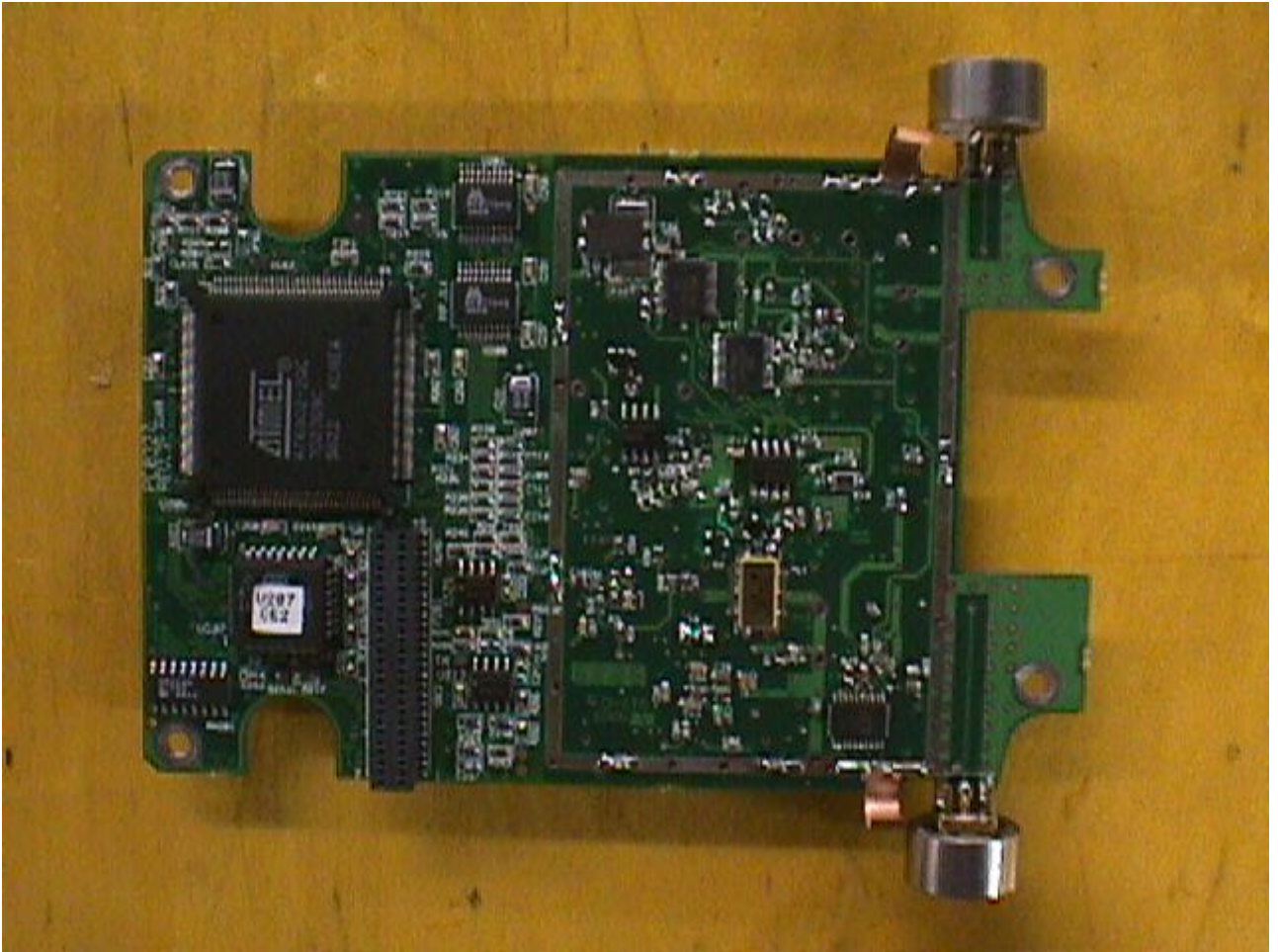
G13: RADIO TRANSCEIVER HOUSING AND RF BOARD COMPONENT SIDE WITH SHIELD



G14: RADIO TRANSCEIVER HOUSING COVER AND RF BOARD SOLDER SIDE WITH SHIELD



G15: RADIO TRANSCEIVER RF BOARD COMPONENT SIDE WITH SHIELD



G16: RADIO COMPONENT WITH INTERNAL SHIELD REMOVED



G17: MICRO PROCESSOR INTERFACE PCB COMPONENT SIDE B



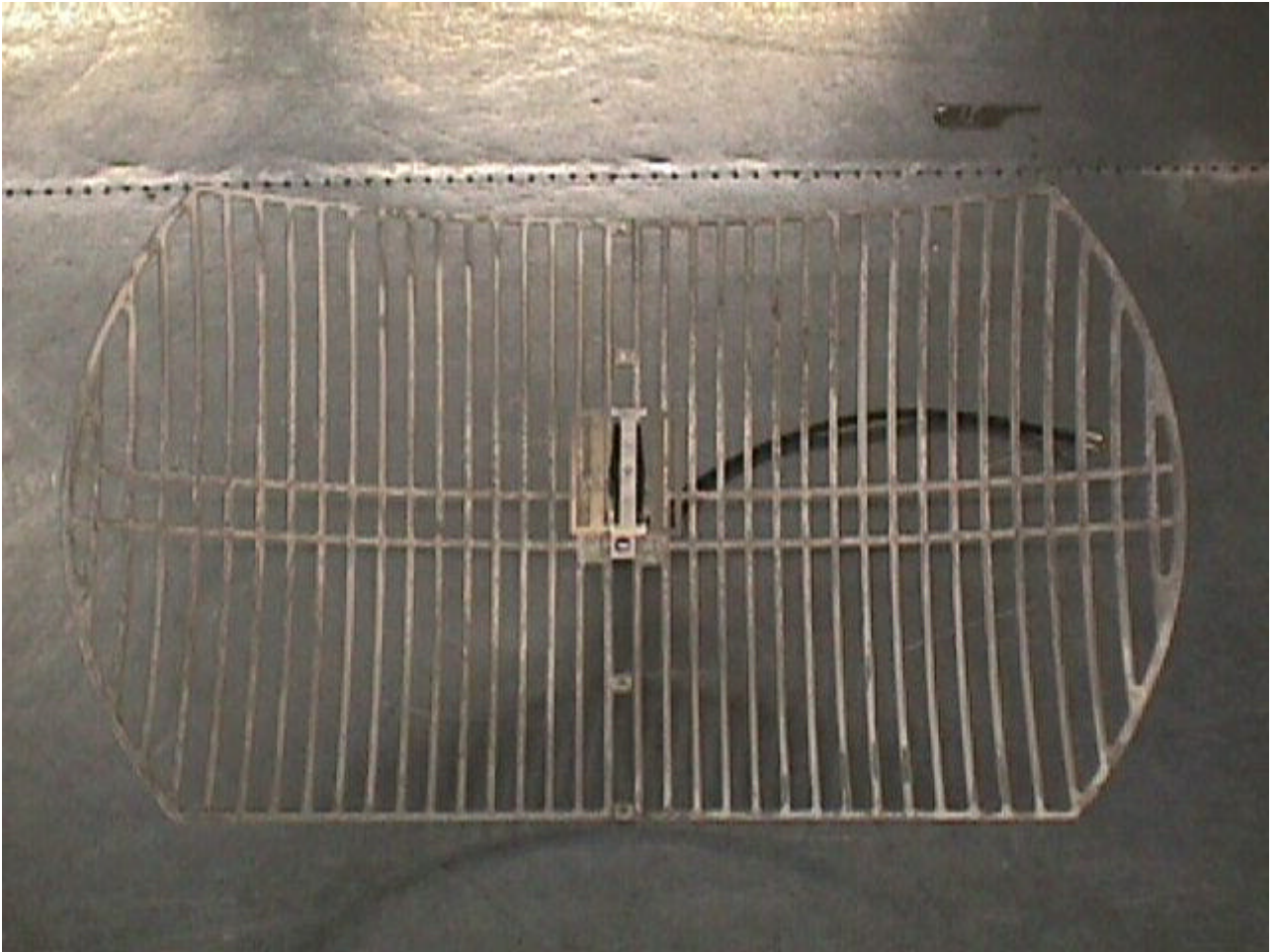
G18: MICRO PROCESSOR INTERFACE PCB COMPONENT SIDE A



G19: SERIAL INTERFACE CABLE



G20: TRANSCEIVER AC/DC POWER SUPPLY



G21: UNI-24 UNI DIRECTIONAL ANTENNA (FRONT)



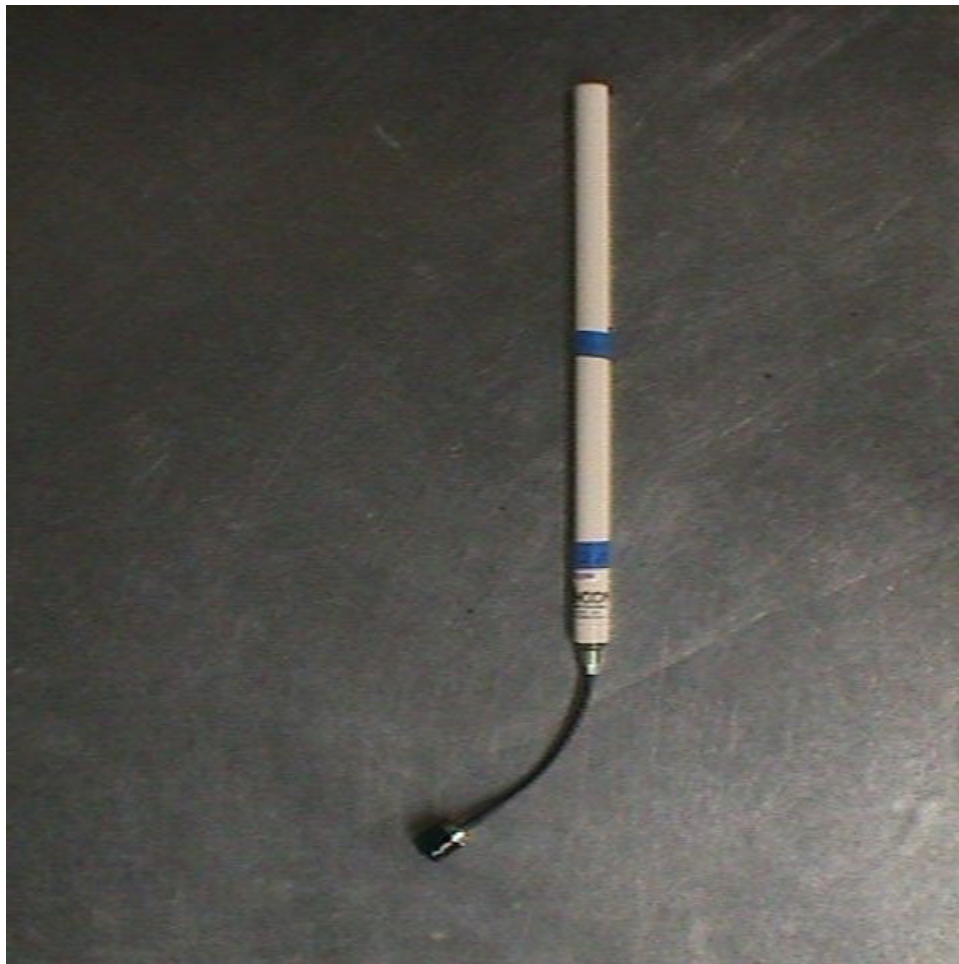
G22: UNI-24 UNI DIRECTIONAL ANTENNA (BACK)



G23: UNI-24 UNI DIRECTIONAL ANTENNA CLOSE UP



G24: OMNI-8 OMNI DIRECTIONAL ANTENNA



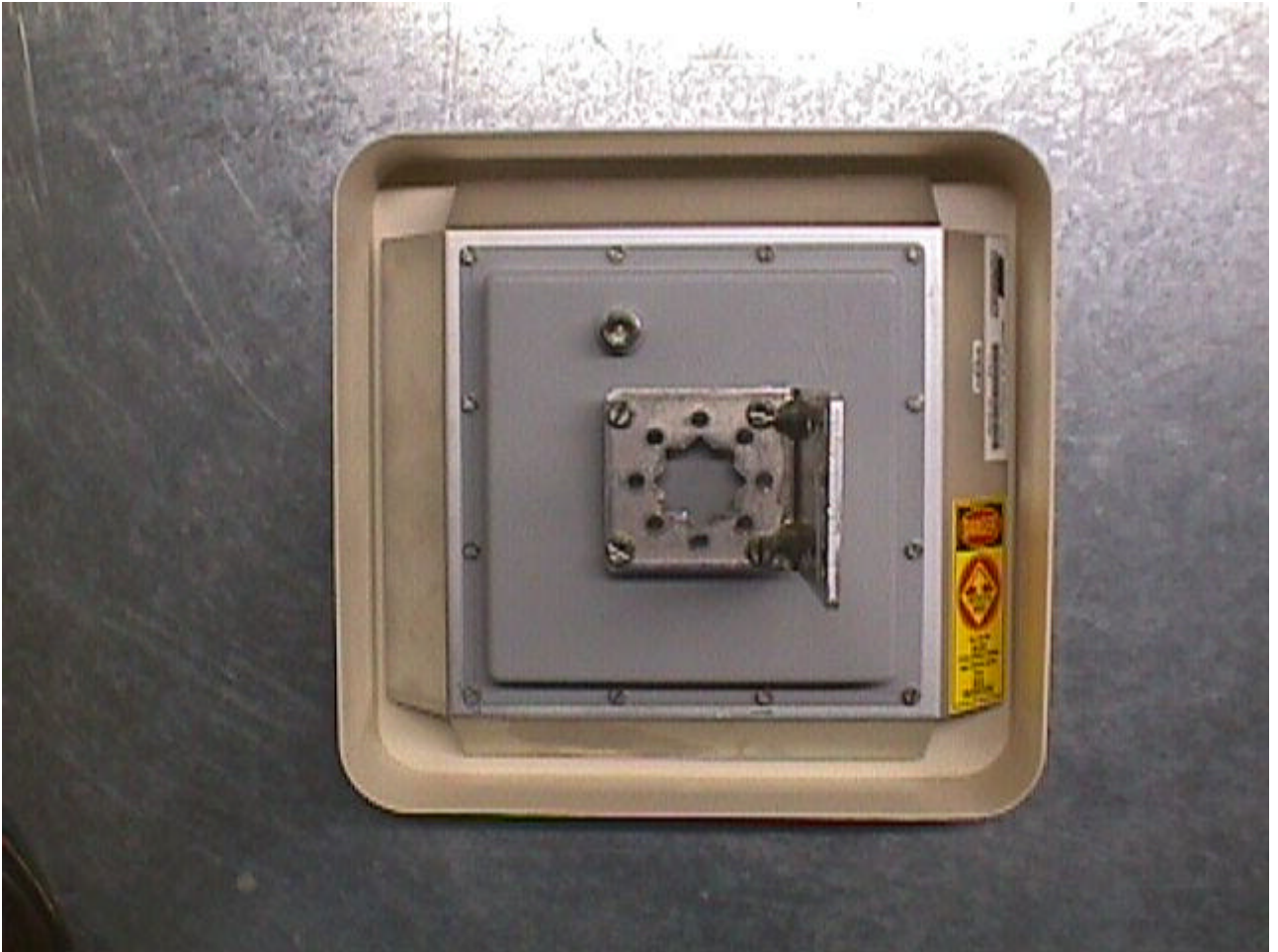
G25: OMNI-6 OMNI DIRECTIONAL ANTENNA



G26: OMNI-12 OMNI DIRECTIONAL ANTENNA



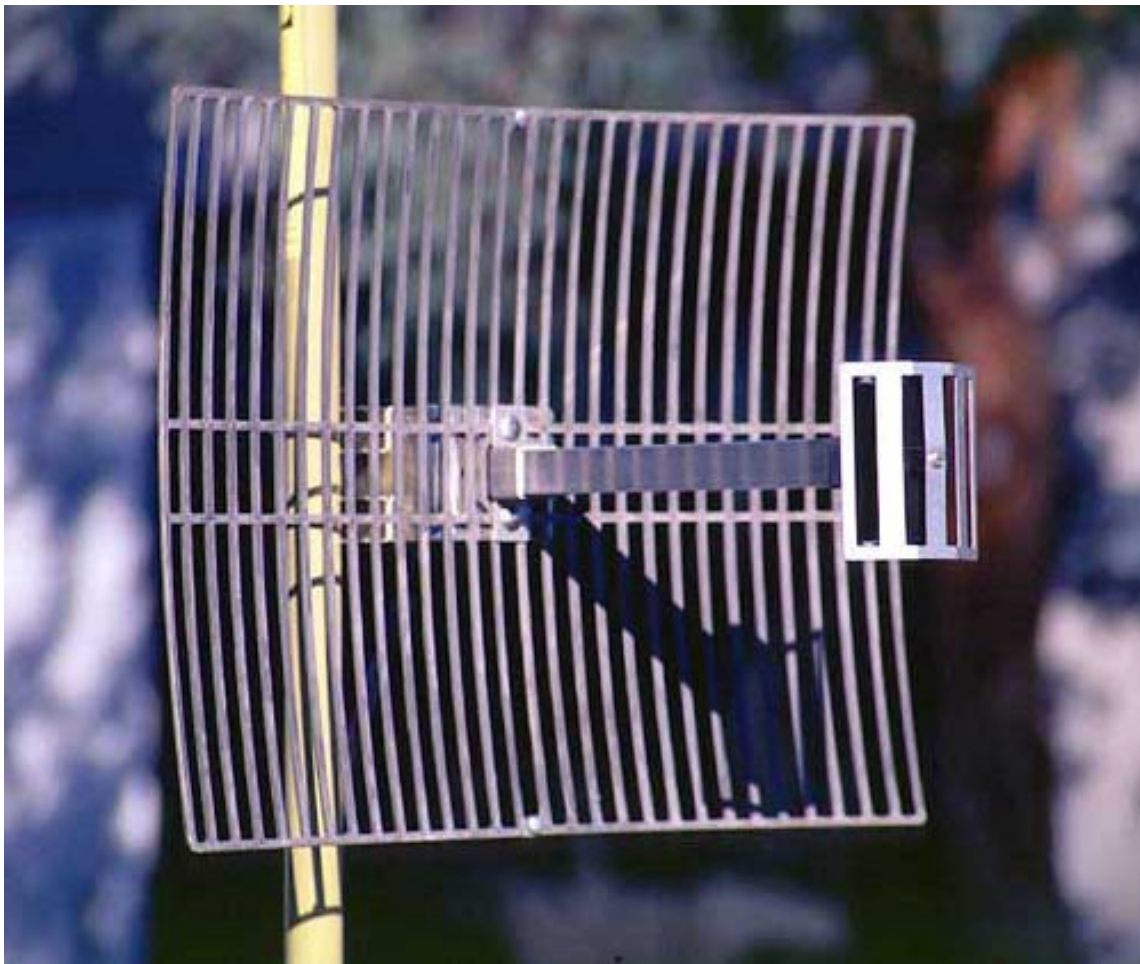
G27: UNI-16 UNI DIRECTIONAL ANTENNA (FRONT)



G28: UNI-16 UNI DIRECTIONAL ANTENNA (BACK)



G29: UNI-13 UNI DIRECTIONAL ANTENNA



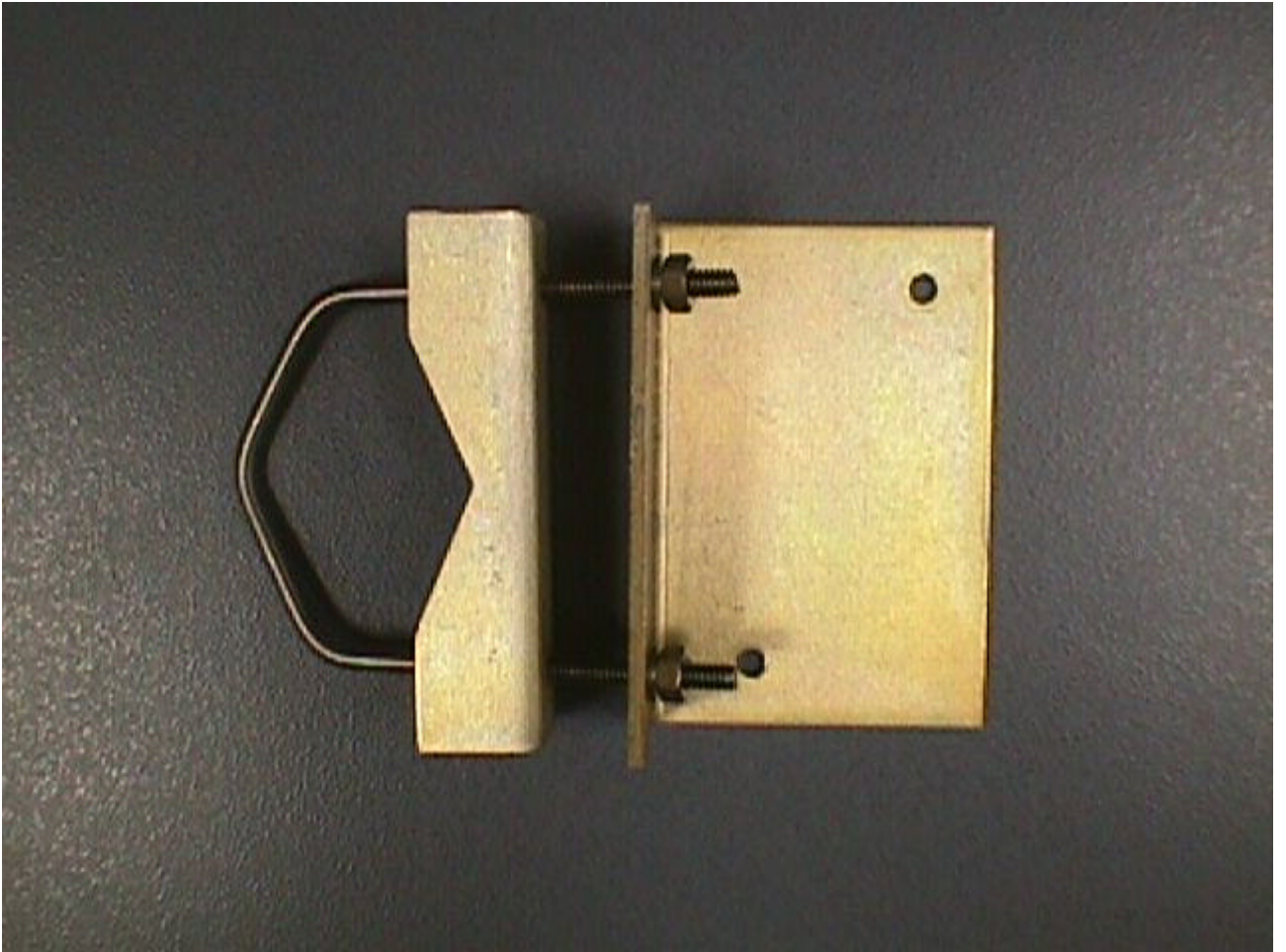
G30: UNI-18 UNI DIRECTIONAL ANTENNA



G31: UNI-21 UNI DIRECTIONAL ANTENNA



G32: AMP BRACKET BOTTOM



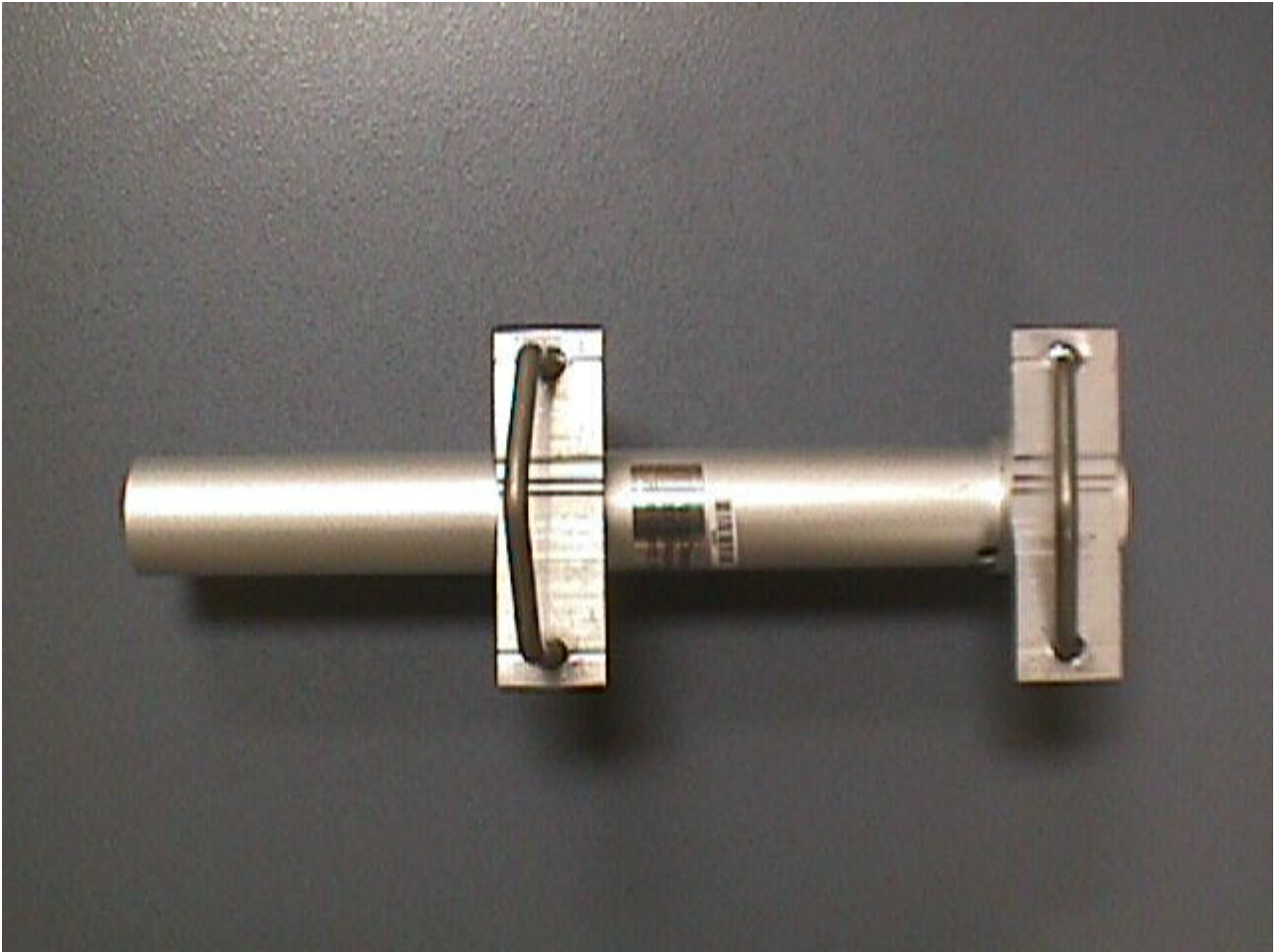
G33: AMP BRACKET TOP



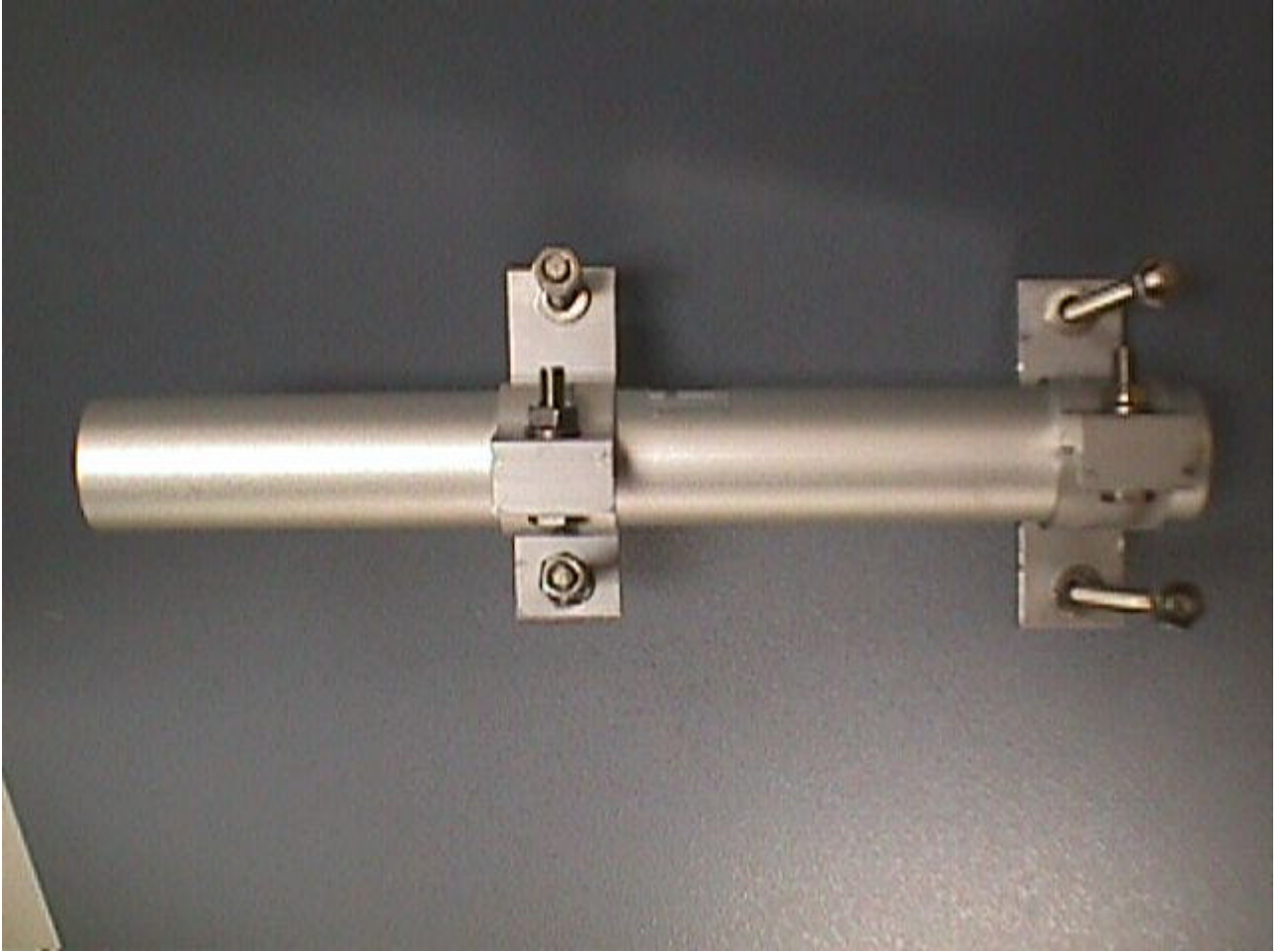
G34: GRID ANTENNA BRACKET BOTTOM



G35: GRID ANTENNA BRACKET TOP



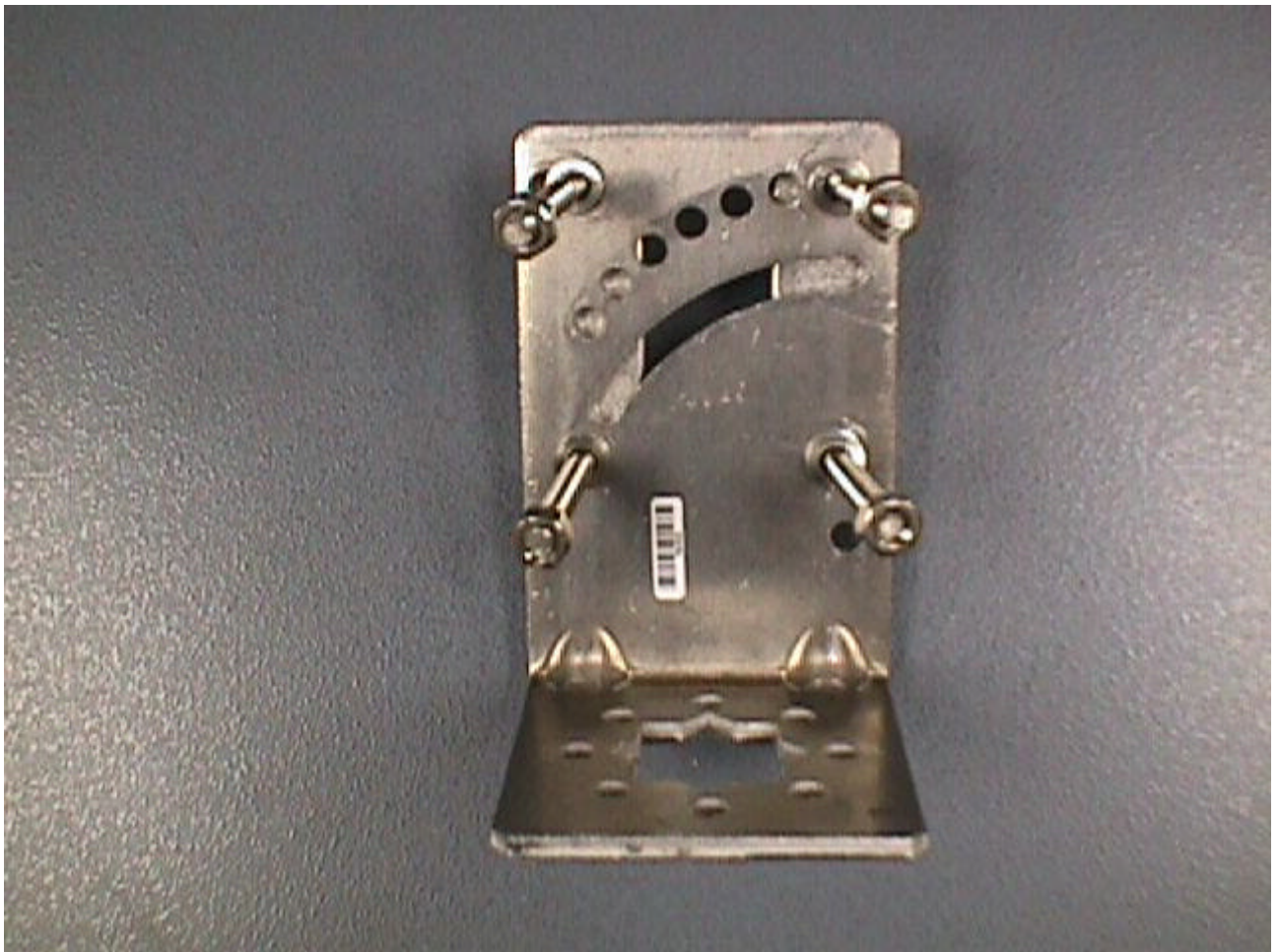
G36: OMNI ANTENNA BRACKET BACK



G37: OMNI ANTENNA BRACKET FRONT



G38: PATCH ANTENNA BRACKET BACK



G39: PATCH ANTENNA BRACKET



G40: 20' LOW LOSS COAXIAL CABLE



G41: 30' LOW LOSS COAXIAL CABLE



G42: SHORT LOW LOSS COAXIAL CABLE