

FCC SAR Test Report

Applicant: Shenzhen Hollyland Technology Co.,Ltd.

EUT Description: OWS Monitor Earphone

Model: M71E

Brand:  **HOLLYLAND**

FCC ID: 2ADZC-M71ER

Standards: FCC 47CFR §2.1093

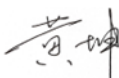
Date of Receipt: 2024/12/26

Date of Test: 2025/01/04 to 2025/01/05

Date of Issue: 2025/01/10

TOWE. tested the above equipment in accordance with the requirements set forth in the above standards. The test results show that the equipment tested is capable of demonstrating compliance with the requirements as documented in this report.

the results documented in this report apply only the tested sample, under the conditions and modes of operation as described herein. It is the manufacturer's responsibility assure that additional production units of the model are manufactured with identical electrical and mechanical components. All sample tested were in good operating condition throughout the entire test program. Measurement Uncertainties are published for informational purposes only and were not taken into account unless noted otherwise. without written approval of TOWE, the test report shall not be reproduced except in full.



Huang Kun
Approved By:



Li Wei
Reviewed By:

Revision History

Rev.	Issue Date	Description	Revised by
01	2025/01/10	Original	Li Wei

Table of Contents

1	Summary of Test Results.....	4
2	Guidance Applied	5
3	Lab Information	5
3.1	Testing Location.....	5
3.2	Test Facility / Accreditations	5
3.3	Ambient Condition	5
4	Client Information.....	5
4.1	Applicant	5
4.2	Manufacturer	5
4.3	Factory	5
5	Product Information	6
5.1	Antenna Locations	6
6	RF Exposure Limits	7
7	Introduction	8
7.1	SAR Definition	8
8	SAR Measurements System	9
8.1	The SAR Measurement Set-up	9
8.2	E-Field Probe.....	10
8.3	Data Acquisition Electronics (DAE).....	10
8.4	Phantom	11
8.5	Device Holder	12
8.6	Measurement procedure.....	13
8.6.1	Power reference measurement.....	13
8.6.2	Area scan	13
8.6.3	Zoom Scan.....	14
8.6.4	Power Drift Measurement	14
9	Test Equipment list	15
10	SAR measurement variability.....	16
11	Description of Test Position.....	16
11.1	Body exposure conditions.....	16
12	System Verification	17
12.1	Recipes for Tissue Simulate Liquid.....	17
12.2	Tissue Verification	17
12.3	SAR System Check.....	18
12.3.1	System Check Result.....	18
12.3.2	Detailed System Check Result	18
13	Conducted Power	19
14	SAR Data Summary	20
14.1	SAR Measurement Result	20
15	Measurement Uncertainty	21
16	Calibration Certificate.....	21
17	Test Setup Photos.....	21
	Appendix A: System Check Plots.....	21
	Appendix B: SAR Test Plots.....	21
	Appendix C: Calibration certificate	21
	Appendix D: Test Setup Photos.....	21

1 Summary of Test Results

Band	Highest SAR _{1g} (W/kg)
	Body 0mm
BT	0.64
SAR Limited(W/kg)	1.6

2 Guidance Applied

FCC 47CFR §2.1093

ANSI/IEEE C95.1-2019

IEC/IEEE 62209-1528:2020

FCC KDB 447498 D01 General RF Exposure Guidance v06

FCC KDB 865664 D01 SAR Measurement 100 MHz to 6 GHz v01r04

FCC KDB 865664 D02 RF Exposure Reporting v01r02

3 Lab Information

3.1 Testing Location

These measurements tests were conducted at the Sushi TOWE Wireless Testing (Shenzhen) Co., Ltd. facility located at F401 and F101, Building E, Hongwei Industrial Zone, Liuxian 3rd Road, Bao'an District, Shenzhen, China. The measurement facility is compliant with the test site requirements specified in ANSI C63.4-2014

Tel.: +86-755-27212361

Contact Email: info@towewireless.com

3.2 Test Facility / Accreditations

A2LA (Certificate Number: 7088.01)

This laboratory is accredited in accordance with the recognized International Standard ISO/IEC 17025:2017 General requirements for the competence of testing and calibration laboratories. This accreditation demonstrates technical competence for a defined scope and the operation of a laboratory quality management system (refer to joint ISO-ILAC-IAF Communiqué dated April 2017).

FCC Designation No.: CN1353

Sushi TOWE Wireless Testing (Shenzhen) Co., Ltd. has been recognized as an accredited testing laboratory. Designation Number: CN1353.

ISED CAB identifier: CN0152

Sushi TOWE Wireless Testing (Shenzhen) Co., Ltd. has been recognized by ISED as an accredited testing laboratory.

CAB identifier: CN0152

Company Number: 31000

3.3 Ambient Condition

Temperature: 18°C~25°C

Relative Humidity: 30%~75%

4 Client Information

4.1 Applicant

Applicant	Shenzhen Hollyland Technology Co.,Ltd.
Address	8F, Building 5D, Skyworth Innovation Valley, Tangtou Road, Shiyan Street,Baoan District, Shenzhen, 518055 China


4.2 Manufacturer

Manufacturer	Shenzhen Hollyland Technology Co.,Ltd.
Address	8F, Building 5D, Skyworth Innovation Valley, Tangtou Road, Shiyan Street,Baoan District, Shenzhen, 518055 China

4.3 Factory

Factory	Shenzhen Hollyland Technology Co.,Ltd.
Address	8F, Building 5D, Skyworth Innovation Valley, Tangtou Road, Shiyan Street,Baoan District, Shenzhen, 518055 China

5 Product Information

EUT Description	OWS Monitor Earphone		
Model	M71E		
Brand	 HOLLYLAND		
Hardware Version	V18		
Software Version	V30		
SN.	5201457498563		
Device Capabilities:			
Band	Frequency Range (MHz)	Modulation Type	
BT	2400 ~ 2483.5	GFSK, $\pi/4$ DQPSK	
2.4G	2400 ~ 2483.5	GFSK	
Antenna Type	<input type="checkbox"/> External, <input checked="" type="checkbox"/> Integrated		
Remark: The above EUT's information was declared by applicant, please refer to the specifications or user manual for more detailed description.			

5.1 Antenna Locations

Please see the Appendix D.

6 RF Exposure Limits

Human Exposure	Uncontrolled Environment General Population (W/kg) or (mW/g)	Controlled Environment Occupational (W/kg) or (mW/g)
Spatial Peak SAR¹ (Brain/Trunk)	1.6	8.0
Spatial Average SAR² (Whole Body)	0.08	0.4
Spatial Peak SAR³ (Hands/Feet/Ankle/Wrist)	4.0	20.0

Note:

1, The Spatial Peak value of the SAR averaged over any 1 gram of tissue (defined as a tissue volume in the shape of a cube) and over the appropriate averaging time.

2, The Spatial Average value of the SAR averaged over the whole body.

3, The Spatial Peak value of the SAR averaged over any 10 grams of tissue (defined as a tissue volume in the shape of a cube) and over the appropriate averaging time.

Uncontrolled Environments are defined as locations where there is the exposure of individuals who have no knowledge or control of their exposure. The general population/uncontrolled exposure limits are applicable to situations in which the general public may be exposed or in which persons who are exposed as a consequence of their employment may not be made fully aware of the potential for exposure or cannot exercise control over their exposure. Members of the general public would come under this category when exposure is not employment-related; for example, in the case of a wireless transmitter that exposes persons in its vicinity.

Controlled Environments are defined as locations where there is exposure that may be incurred by persons who are aware of the potential for exposure, (i.e. as a result of employment or occupation). In general, occupational/controlled exposure limits are applicable to situations in which persons are exposed as a consequence of their employment, who have been made fully aware of the potential for exposure and can exercise control over their exposure. The exposure category is also applicable when the exposure is of a transient nature due to incidental passage through a location where the exposure levels may be higher than the general population/uncontrolled limits, but the exposed person is fully aware of the potential for exposure and can exercise control over his or her exposure by leaving the area or by some other appropriate means.

7 Introduction

SAR is related to the rate at which energy is absorbed per unit mass in an object exposed to a radio field. The SAR distribution in a biological body is complicated and is usually carried out by experimental techniques or numerical modeling. The standard recommends limits for two tiers of groups, occupational/controlled and general population/uncontrolled, based on a person's awareness and ability to exercise control over his or her exposure. In general, occupational/controlled exposure limits are higher than the limits for general population/uncontrolled.

7.1 SAR Definition

The SAR definition is the time derivative (rate) of the incremental energy (dW) absorbed by (dissipated in) an incremental mass (dm) contained in a volume element (dv) of a given density (ρ). The equation description is as below:

$$SAR = \frac{d}{dt} \left(\frac{dW}{dm} \right) = \frac{d}{dt} \left(\frac{dW}{\rho dv} \right)$$

SAR is expressed in units of Watts per kilogram (W/kg):

$$SAR = \frac{\sigma E^2}{\rho}$$

Where:

σ is the conductivity of the tissue material (S/m)

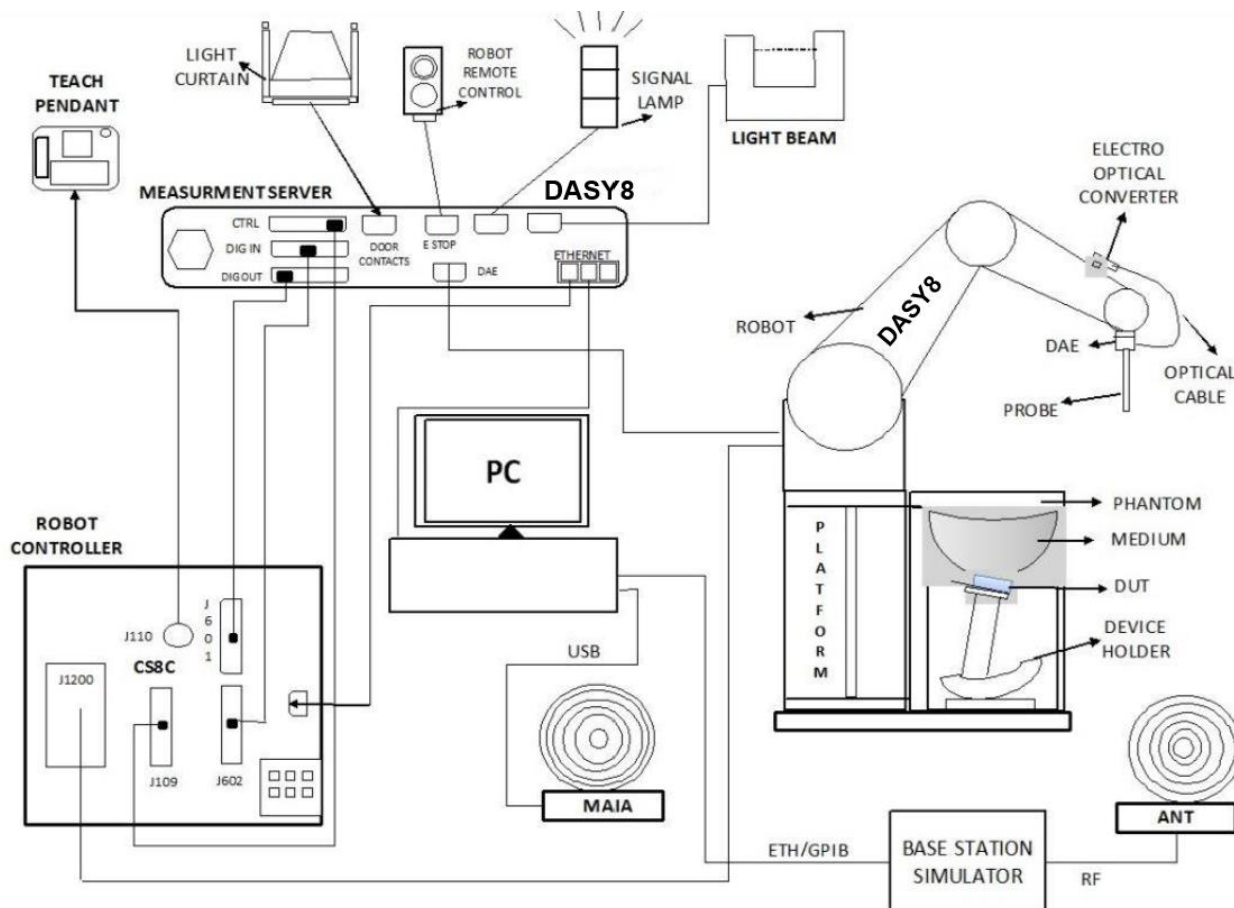
ρ is the mass density of the tissue material (kg/m³)

E is the RMS electrical field strength (V/m)

8 SAR Measurements System


8.1 The SAR Measurement Set-up

The DASY system used for performing compliance tests consists of the following items:




- A standard high precision 6-axis robot with controller, teach pendant and software. An arm extension for accommodating the data acquisition electronics (DAE).
- An isotropic Field probe optimized and calibrated for the targeted measurement.
- A data acquisition electronics (DAE) which performs the signal amplification, signal multiplexing, AD-conversion, offset measurements, mechanical surface detection, collision detection, etc. The unit is battery powered with standard or rechargeable batteries. The signal is optically transmitted to the EOC.
- The Electro-optical converter (EOC) performs the conversion from optical to electrical signals for the digital communication to the DAE. To use optical surface detection, a special version of the EOC is required. The EOC signal is transmitted to the measurement server.
- The function of the measurement server is to perform the time critical tasks such as signal filtering, control of the robot operation and fast movement interrupts.
- The Light Beam used is for probe alignment. This improves the (absolute) accuracy of the probe positioning.
- A computer running Windows 11 and the DASY8 software.
- Remote control and teach pendant as well as additional circuitry for robot safety such as warning lamps, etc.
- The phantom, the device holder and other accessories according to the targeted measurement.

8.2 E-Field Probe


	Symmetrical design with triangular core Built-in shielding against static charges PEEK enclosure material (resistant to organic solvents, e.g., DGBE)
Calibration	ISO/IEC 17025 calibration service available.
Frequency	10 MHz to > 6 GHz Linearity: ± 0.2 dB (30 MHz to 6 GHz)
Directivity	± 0.3 dB in TSL (rotation around probe axis) ± 0.5 dB in TSL (rotation normal to probe axis)
Dynamic Range	10 μ W/g to > 100 mW/g Linearity: ± 0.2 dB (noise: typically < 1 μ W/g)
Dimensions	Overall length: 337 mm (Tip: 20 mm) Tip diameter: 2.5 mm (Body: 12 mm) Typical distance from probe tip to dipole centers: 1 mm

8.3 Data Acquisition Electronics (DAE)

	<p>The data acquisition electronics (DAE) consists of a highly sensitive electrometer-grade preamplifier with auto-zeroing, a channel and gain switching multiplexer, a fast 16 bit AD-converter and a command decoder and control logic unit. Transmission to the measurement server is accomplished through an optical downlink for data and status information as well as an optical uplink for commands and the clock.</p> <p>The input impedance of the DAE is 200 MOhm; the inputs are symmetrical and floating. Common mode rejection is above 80 dB.</p>
---	--


8.4 Phantom

SAM Twin Phantom:

Material	Vinylester, glass fiber reinforced (VE-GF)	
Shell Thickness	2 ± 0.2 mm (6 ± 0.2 mm at ear point)	
Dimensions (incl. Wooden Support)	Length: 1000 mm Width: 500 mm Height: adjustable feet	
Filling Volume	Approx. 25 liters	
Wooden Support	SPEAG standard phantom table	

The bottom plate contains three pair of bolts for locking the device holder. The device holder positions are adjusted to the standard measurement positions in the three sections. A white cover is provided to tap the phantom during off-periods to prevent water evaporation and changes in the liquid parameters. On the phantom top, three reference markers are provided to identify the phantom position with respect to the robot.

ELI Phantom:

Material	Vinylester, glass fiber reinforced (VE-GF)	
Shell Thickness	2.0 ± 0.2 mm (bottom plate)	
Dimensions	Major axis: 600 mm Minor axis: 400 mm	
Filling Volume	approx. 30 liters	
Wooden Support	SPEAG standard phantom table	
The ELI phantom is intended for compliance testing of handheld and body-mounted wireless devices in the frequency range of 30 MHz to 6 GHz. ELI4 is fully compatible with standard and all known tissue simulating liquids.		

8.5 Device Holder

The SAR measured in the phantom is approximately inversely proportional to the square of the distance between the source and the liquid surface. For a source at 5mm distance, a positioning uncertainty of $\pm 0.5\text{mm}$ would produce uncertainty in the SAR of $\pm 20\%$. Accurate device positioning is therefore crucial for accurate and repeatable measurements. The positions at which the devices must be measured are defined by the standards. The DASY8 device holder along with the associated adaptors / options is designed to accommodate different types & sizes (laptops, tablets, phones) of test devices and yet provide accurate and repeatable positioning as described in the test standards.

The device holder is available in two configurations (see Figure 3.13.1): for hand held transmitters (mobile phones) – MD4HHTV5 – Mounting Device for Hand-Held Transmitters and for Body-Worn transmitters – MD4LAP5 – Mounting Device for laptops and other body worn transmitters.



(a) MD4HHTV5



(b) MD4LAPV5

Figure 3.13.1: Mounting Device for Hand-Held Devices and Laptop / Body-Worn Devices

8.6 Measurement procedure

8.6.1 Power reference measurement

The Power Reference Measurement and Power Drift Measurement jobs are useful jobs for monitoring the power drift of the device under test in the batch process. The minimum distance of probe sensors to surface determines the closest measurement point to phantom surface. This distance cannot be smaller than the distance of sensor calibration points to probe tip as defined in the probe properties.

8.6.2 Area scan

Measurement procedures for evaluating SAR from wireless handsets typically start with a coarse measurement grid to determine the approximate location of the local peak SAR values. This is known as the area-scan procedure. In addition, identify the positions of any local maxima with SAR values within 2 dB of the maximum value, and that will not be within the zoom scan of other peaks. Additional zoom scans shall be measured for such peaks only when the primary peak is within 2 dB of the SAR compliance limit.

Area scan parameters extracted from IEC/IEEE 62209-1528 SAR measurement as below:

Parameter	DUT transmit frequency being tested	
	$f \leq 3 \text{ GHz}$	$3 \text{ GHz} < f \leq 10 \text{ GHz}$
Maximum distance between the measured points (geometric centre of the sensors) and the inner phantom surface (z_{M1} in Figure 20 in mm)	5 ± 1	$\delta \ln(2)/2 \pm 0,5^a$
Maximum spacing between adjacent measured points in mm (see O.8.3.1) ^b	20, or half of the corresponding zoom scan length, whichever is smaller	$60/f$, or half of the corresponding zoom scan length, whichever is smaller
Maximum angle between the probe axis and the phantom surface normal (α in Figure 20) ^c	5° (flat phantom only) 30° (other phantoms)	5° (flat phantom only) 20° (other phantoms)
Tolerance in the probe angle	1°	1°
^a δ is the penetration depth for a plane-wave incident normally on a planar half-space. ^b See Clause O.8 on how Δx and Δy may be selected for individual area scan requirements. ^c The probe angle relative to the phantom surface normal is restricted due to the degradation in the measurement accuracy in fields with steep spatial gradients. The measurement accuracy decreases with increasing probe angle and increasing frequency. This is the reason for the tighter probe angle restriction at frequencies above 3 GHz.		

8.6.3 Zoom Scan

Zoom Scans are used to assess the peak spatial SAR values within a cubic averaging volume containing 1 g and 10 g of simulated tissue. The Zoom Scan measures points (refer to table below) within a cube whose base faces are centered on the maxima found in a preceding area scan job within the same procedure. When the measurement is done, the Zoom Scan evaluates the averaged SAR for 1 g and 10 g and displays these values next to the job's label.

Zoom Scan parameters extracted from IEC/IEEE 62209-1528 SAR measurement as below:

Parameter	DUT transmit frequency being tested	
	$f \leq 3 \text{ GHz}$	$3 \text{ GHz} < f \leq 10 \text{ GHz}$
Maximum distance between the closest measured points and the phantom surface (z_{M1} in Figure 20 and Table 3, in mm)	5	$\delta \ln(2)/2^a$
Maximum angle between the probe axis and the phantom surface normal (α in Figure 20)	5° (flat phantom only) 30° (other phantoms)	5° (flat phantom only) 20° (other phantoms)
Maximum spacing between measured points in the x - and y -directions (Δx and Δy , in mm)	8	$24/f^b$
For uniform grids: Maximum spacing between measured points in the direction normal to the phantom shell (Δz_1 in Figure 20, in mm)	5	$10/(f - 1)$
For graded grids: Maximum spacing between the two closest measured points in the direction normal to the phantom shell (Δz_1 in Figure 20, in mm)	4	$12/f$
For graded grids: Maximum incremental increase in the spacing between measured points in the direction normal to the phantom shell ($R_z = \Delta z_2/\Delta z_1$ in Figure 20)	1,5	1,5
Minimum edge length of the zoom scan volume in the x - and y -directions (L_z in O.8.3.2, in mm)	30	22
Minimum edge length of the zoom scan volume in the direction normal to the phantom shell (L_h in O.8.3.2 in mm)	30	22
Tolerance in the probe angle	1°	1°
^a δ is the penetration depth for a plane-wave incident normally on a planar half-space.		
^b This is the maximum spacing allowed, which might not work for all circumstances.		

8.6.4 Power Drift Measurement

The Power Drift Measurement job measures the field at the same location as the most recent power reference measurement job within the same procedure, and with the same settings. The Power Drift Measurement gives the field difference in dB from the reading conducted within the last Power Reference Measurement. Several drift measurements are possible for one reference measurement. This allows a user to monitor the power drift of the device under test that must remain within a maximum variation of $\pm 5\%$. Detail power drift measurement refer to appendix B.

9 Test Equipment list

Manufacturer	Equipment Name	Model	Serial Number	Calibration Date	Due Date of calibration
SPEAG	Twin Phantom	SAM	2168	NCR	NCR
SPEAG	E-Field Probe	EX3DV4	7812	2024/06/25	2025/06/24
SPEAG	Data Acquisition Electronics	DAE4	1846	2024/12/10	2025/12/09
SPEAG	System Validation Kits	D2450V2	1099	2023/02/02	2026/02/01
SPEAG	Dielectric parameter probes	DAK3.5	1341	2024/07/15	2025/07/14
R&S	Vector network analyzer	ZNB8	101413	2024/07/17	2025/07/16
R&S	Signal Generator	SMR20	100621	2024/03/25	2025/03/24
R&S	AVG Power Sensor	NRP-Z21	101651	2024/03/25	2025/03/24
R&S	AVG Power Sensor	NRP-Z21	104189	2024/03/25	2025/03/24
HAISIDIKE	Thermometer	TP300	TOWE-EQ-SR-023	2024/03/27	2025/03/26
BingYu	Temperature and Humidity Indicator	HTC-1	TOWE-EQ-SR-024	2024/03/26	2025/03/25
Talent Microwave	Directional Coupler	TC-05180-10S	220420003	NCR	NCR
QiJi	Amplifier	YX28982301	TOWE-EQ-SR-020	NCR	NCR

Note:

1. Referring to KDB 865664 D01v01r04, the dipole calibration interval can be extended to 3 years with justification. The dipoles are also not physically damaged or repaired during the interval.
2. The justification data of dipole can be found in Appendix C. The return loss is < -20dB, within 20% of prior calibration, the impedance is within 5 ohm of prior calibration.

10 SAR measurement variability

SAR measurement variability must be assessed for each frequency band, which is determined by the SAR probe calibration point and tissue-equivalent medium used for the device measurements. When both head and body tissue-equivalent media are required for SAR measurements in a frequency band, the variability measurement procedures should be applied to the tissue medium with the highest measured SAR, using the highest measured SAR configuration for that tissue equivalent medium.

The following procedures are applied to determine if repeated measurements are required.

- 1) Repeated measurement is not required when the original highest measured SAR is < 0.80 or 2 W/kg (1-g or 10-g respectively); steps 2) through 4) do not apply.
- 2) When the original highest measured SAR is ≥ 0.80 or 2 W/kg (1-g or 10-g respectively), repeat that measurement once.
- 3) Perform a second repeated measurement only if the ratio of largest to smallest SAR for the original and first repeated measurements is > 1.20 or when the original or repeated measurement is ≥ 1.45 or 3.6 W/kg (~ 10% from the 1-g or 10-g respective SAR limit).
- 4) Perform a third repeated measurement only if the original, first or second repeated measurement is ≥ 1.5 or 3.75 W/kg (1-g or 10-g respectively) and the ratio of largest to smallest SAR for the original, first and second repeated measurements is > 1.20

11 Description of Test Position

11.1 Body exposure conditions

SAR can test the sides near the antenna, the surface of the device should be tested for SAR compliance with the device touching the phantom. The SAR Exclusion Threshold in KDB 447498 D01 can be applied to determine SAR test exclusion for adjacent edge configurations. The closest distance from the antenna to an adjacent device surface is used to determine if SAR testing is required for the adjacent surfaces, with the adjacent surface positioned against the phantom and the surface containing the antenna positioned perpendicular to the phantom.

12 System Verification

12.1 Recipes for Tissue Simulate Liquid

The bellowing tables give the recipes for tissue simulating liquids to be used in different frequency bands:

Ingredients (% by weight)	Frequency (MHz)				
	450	700-900	1750-2000	2300-2500	2500-2700
Water	38.56	40.30	55.24	55.00	54.92
Salt (NaCl)	3.95	1.38	0.31	0.2	0.23
Sucrose	56.32	57.90	0	0	0
HEC	0.98	0.24	0	0	0
Bactericide	0.19	0.18	0	0	0
Tween	0	0	44.45	44.80	44.85
Salt: 99+% Pure Sodium Chloride Water: De-ionized, 16 MΩ ⁺ resistivity Tween: Polyoxyethylene (20) sorbitan monolaurate			Sucrose: 98+% Pure Sucrose HEC: Hydroxyethyl Cellulose		

12.2 Tissue Verification

The Conductivity (σ) and Permittivity (ρ) are listed in bellow table. The temperature variation of the Tissue Simulate Liquids was $22 \pm 2^\circ\text{C}$, the liquid depth of the ear reference point or the flat phantom was at least 15 cm (which is shown in Figure 12-1).

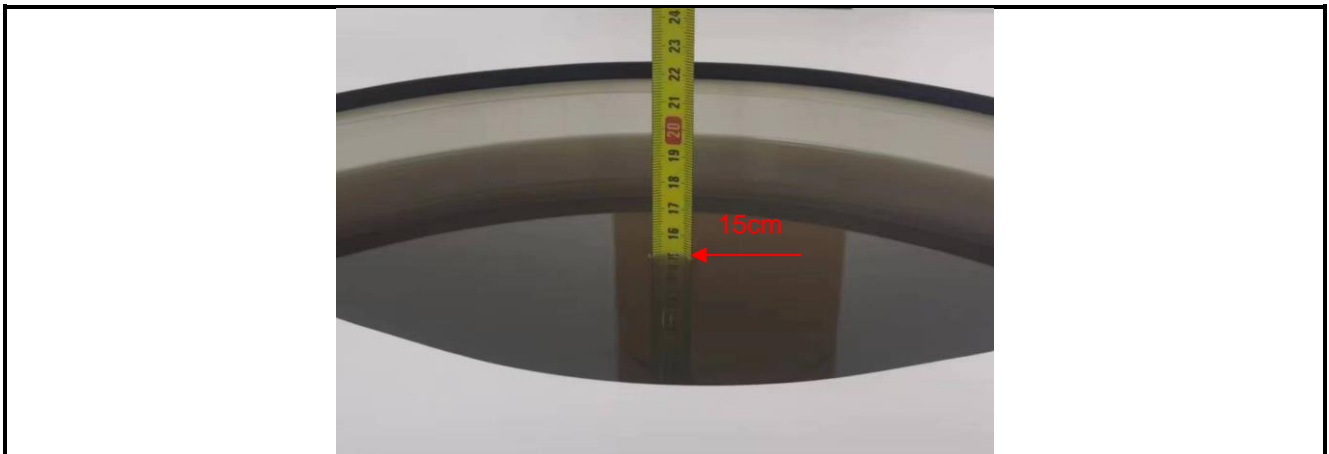


Figure 12-1 Liquid depth in the Flat Phantom

Frequency (MHz)	Tissue Type	Liquid Temp. ($^\circ\text{C}$)	Target Tissue		Measured Tissue		Deviation (Limit $\pm 5\%$)		Date
			Permittivity ϵ_r	Conductivity $\sigma(\text{S/m})$	Permittivity ϵ_r	Conductivity $\sigma(\text{S/m})$	$\Delta\epsilon_r$	$\Delta\sigma$	
2450	Head	21.9	39.20	1.80	39.800	1.810	1.53%	0.56%	2025/01/04

Table 1: Measurement Tissue Parameters

12.3 SAR System Check

Prior to SAR assessment, a SAR system Check measurement was performed to see if the measured SAR was within $\pm 10\%$ from the target SAR values. The System Performance Check Setup in Figure 12-3.

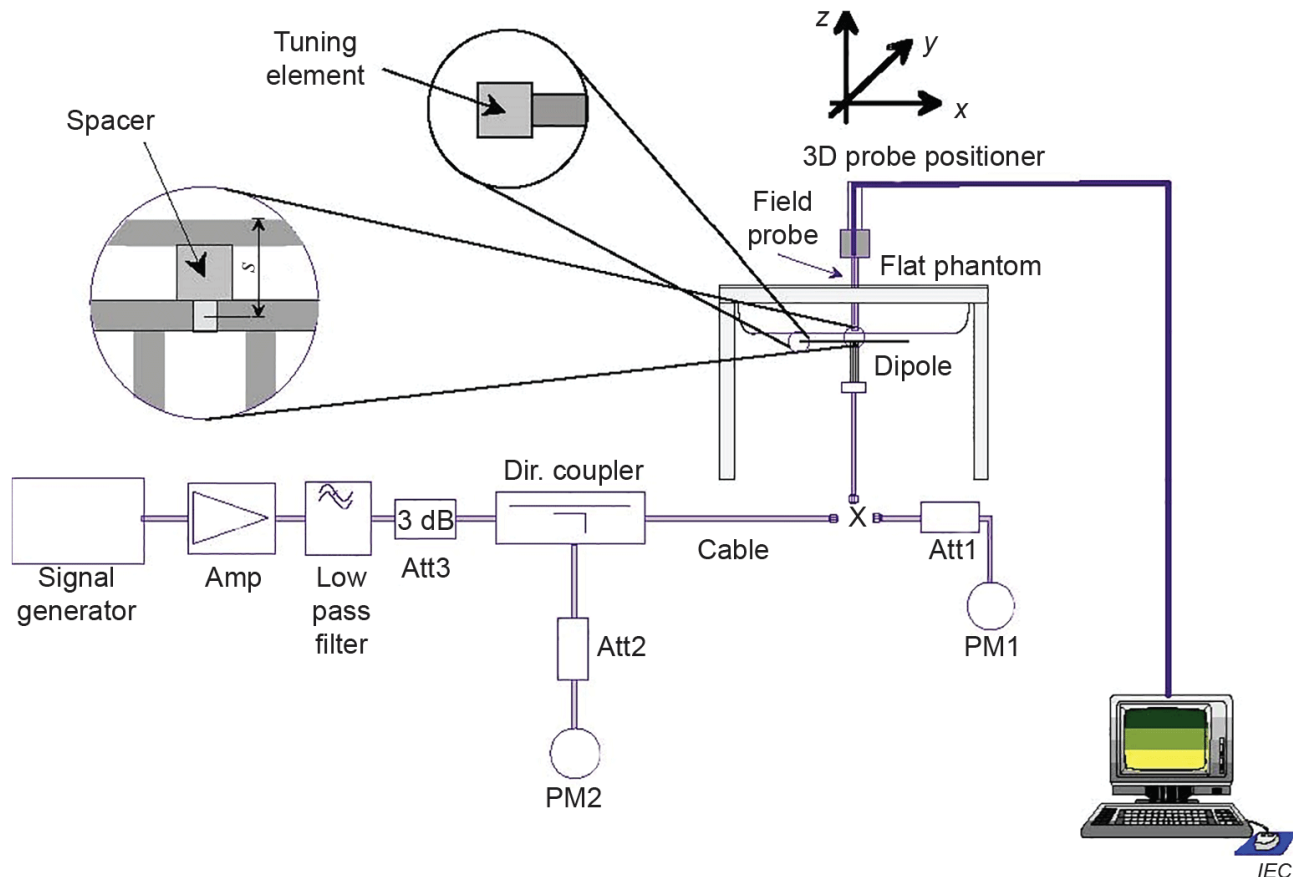


Figure 12-3 System Performance Check Setup

12.3.1 System Check Result

Frequency (MHz)	Tissue Type	Dipole	S/N	Target SAR (1W)		Measured SAR (100mW)		Measured SAR (normalized to 1W)		Deviation (Limit $\pm 10\%$)		Date
				1g (W/kg)	10g (W/kg)	1g (W/kg)	10g (W/kg)	1g (W/kg)	10g (W/kg)	$\Delta 1g$	$\Delta 10g$	
2450	Head	D2450V2	1099	51.40	23.90	5.09	2.38	50.90	23.80	-0.97%	-0.42%	2025/01/04

Table 2: SAR System Check Result

12.3.2 Detailed System Check Result

Please see the Appendix A

13 Conducted Power

Band		Ch./Freq. (MHz)	Average Conducted Power(dBm)	Tune up (dBm)
BT	GFSK	0/2402	12.24	13.00
		39/2441	11.89	13.00
		78/2480	11.58	13.00
	π /4DQPSK	0/2402	11.98	12.00
		39/2441	11.68	12.00
		78/2480	11.58	12.00
BLE 1M	GFSK	0/2402	12.15	13.00
		19/2440	11.94	13.00
		39/2480	11.70	13.00
BLE 2M	GFSK	0/2402	12.02	13.00
		19/2440	11.81	13.00
		39/2480	11.56	13.00
2.4G	GFSK	1/2402	12.08	13.00
		19/2440	11.87	13.00
		38/2480	11.70	13.00

Note: SAR tests is performed using modulation corresponding to the maximum output power.

14 SAR Data Summary

General Notes:

- 1) The Highest Reported SAR Plot refer to Appendix B.
- 2) Per KDB 447498 D01, testing of other required channels within the operating mode of a frequency band is not required when the reported 1g or 10g SAR for the mid-band or highest output power channel is:
 - $\leq 0.8\text{W/kg}$ for 1g or 2.0W/kg for 10g respectively, when the transmission band is $\leq 100\text{MHz}$.
 - $\leq 0.6\text{ W/kg}$ or 1.5 W/kg , for 1g or 10g respectively, when the transmission band is between 100 MHz and 200MHz.
 - $\leq 0.4\text{ W/kg}$ or 1.0 W/kg , for 1g or 10g respectively, when the transmission band is $\geq 200\text{MHz}$.

14.1 SAR Measurement Result

Test Results									
Test position	Mode	Ch./Freq. (MHz)	SAR (W/kg) 1g	SAR (W/kg) 10g	Power Drift (dB)	Conducted Power (dBm)	Tune up Limit(dBm)	Scaling Factor	Reported 1g SAR (W/kg)
Body 0mm									
Front side	DH5 GFSK	0/2402	0.426	0.140	-0.07	12.24	13.00	1.191	0.507
Back side	DH5 GFSK	0/2402	0.069	0.032	0.00	12.24	13.00	1.191	0.082
Left side	DH5 GFSK	0/2402	0.042	0.022	0.00	12.24	13.00	1.191	0.050
Right side	DH5 GFSK	0/2402	0.042	0.020	-0.01	12.24	13.00	1.191	0.050
Top side	DH5 GFSK	0/2402	0.063	0.028	0.00	12.24	13.00	1.191	0.075
Bottom side	DH5 GFSK	0/2402	0.094	0.046	0.02	12.24	13.00	1.191	0.112
Front side	DH5 GFSK	39/2441	0.492	0.148	-0.01	11.89	13.00	1.291	0.635
Front side	DH5 GFSK	78/2480	0.380	0.114	0.02	11.58	13.00	1.387	0.527

Table 3: SAR Measurement Result.

Note:

For the SAR test is using the maximum duty cycle.

15 Measurement Uncertainty

Per KDB 865664 D01 SAR measurement 100MHz to 6GHz, when the highest measured 1-g SAR within a frequency band is < 1.5 W/kg and the measured 10-g SAR within a frequency band is < 3.75 W/kg. The expanded SAR measurement uncertainty must be $\leq 30\%$, for a confidence interval of $k = 2$. If these conditions are met, extensive SAR measurement uncertainty analysis described in IEEE Std 1528-2013 is not required in SAR reports submitted for equipment approval.

16 Calibration Certificate

Please see the Appendix C

17 Test Setup Photos

Please see the Appendix D

Appendix A: System Check Plots

Appendix B: SAR Test Plots

Appendix C: Calibration certificate

Appendix D: Test Setup Photos

--- The End ---
