

June.26.2006

## **Tune up procedure for DEKO2119CR** **(MW-CMR-PCS-1W80)**

### **1. General**

- 1.1. This Procedure is conducted by the customer using RMS SW, on  
“Parameters and Control “ screen.

### **2. Procedure**

- 2.1. Connect to unit using RMS (see Manual).  
2.2. Chose “Parameters and Control “ screen (see figure 1).  
2.3. Set Max Power to the required output power using the combo choice list.  
2.4. Set Max Gain to maximum value.  
2.5. Set SALC check box on.  
2.6. Set Power check box on for Downlink and uplink.

### **3. Result:**

- 3.1. The unit is set to the required power, the SALC control the Gain so that the  
output power will not exceed the maximum output power.

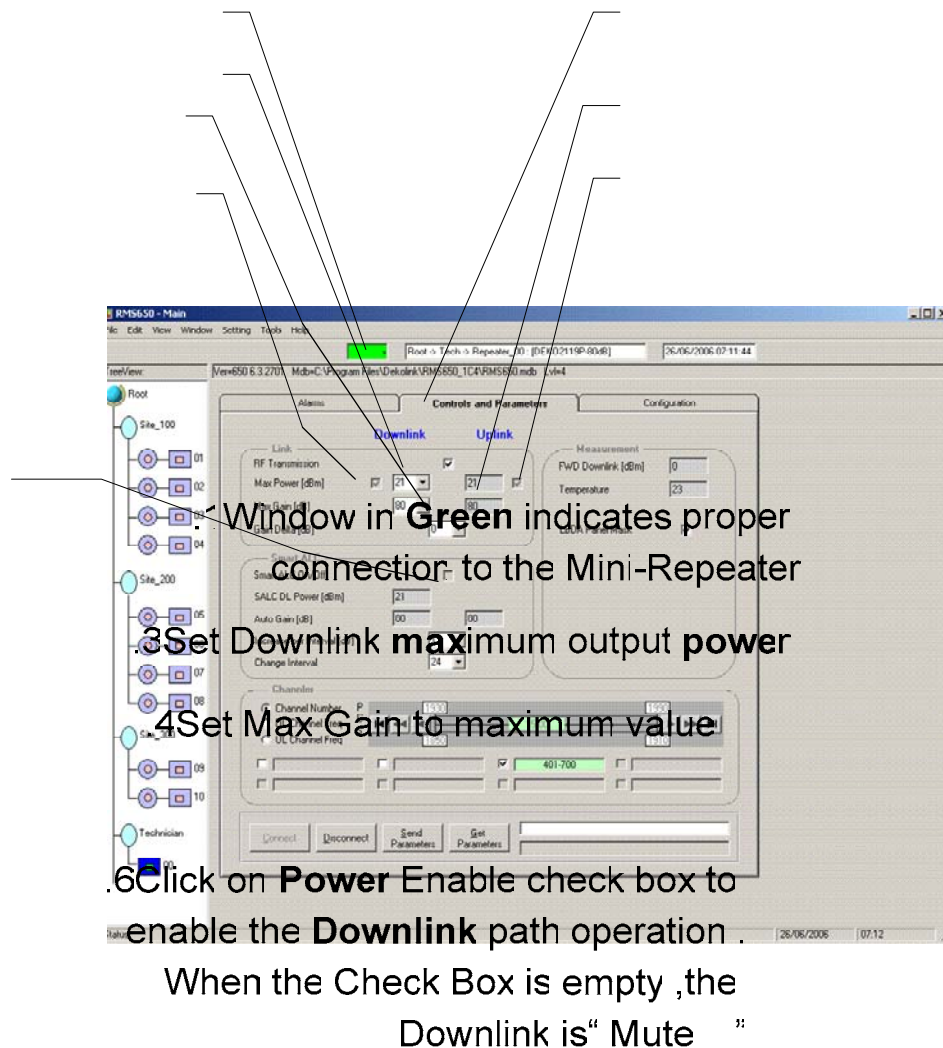


Figure 1: RMS Software – Controls and Parameters Screen

.5 Click on **Smart ALC** Check Box  
2 to turn it on