

Quick Guide

V1.0

FCC ID: 2APRB-T8204-W

Statement

It is highly appreciated for you buying our products.the main application of our product will be introduced in this guide.please feel free to contact us if you have any question,and further information will be found on our WEBSITE and technical supporting center.we will not give another information about the inaccurate content in this guide,since the product be updated or changed with software or hardware. If there is any discrepancy between the product description and the actual product, the actual product shall prevail.

1. Safety Caution

- In order to make the machine work normally for a long time, the machine should be placed in a relatively dry and dust-free space. Avoid short circuits caused by the machine being wet.
- Check adaptor voltage, prevent damage device since using wrong adaptor.
- The machine should work at the range of the temperature and humidity allowed by the technical index.
- It should be avoid that the machine be set in the vibration environment.
- Installation of the machine have to comply with local or national standard.

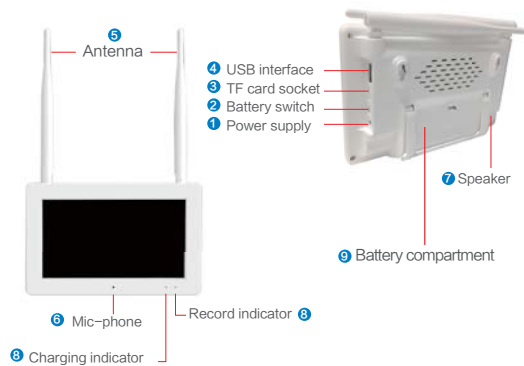
2.Out Of Box Audit

While you receive the product,please opening the box and putting the device on a safe place,and making sure of the product and accessories according the packing list.please connecting the dealer immediately, if finding any product damage or accessories shortage in the box.

Packing list		
S/N	Item	Quantity
1	Wireless NVR with Touch screen	1pcs
2	Wireless NVR with Touch screen power supply 5V 2.5A	1pcs
3	Quick guide	1pcs

3. Interface description

NVR interface description

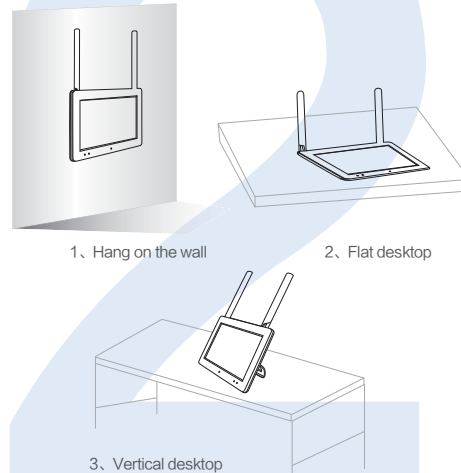


- Power supply: DC5V 2.5A
- Battery switch: turn on/off the battery(battery powered)
- TF card socket: maximum support 128G
- USB interface: 1 USB 2.0 interface (supports USB flash drive upgrade, and mouse)
- Antenna: For wireless signal transmission
- Mic-phone: support mic-phone voice intercom
- Speaker: audio output
- Indicator light: a charging indicator, a record indicator
- Battery compartment: It is used for power supply of 2 pcs of 18650 batteries.

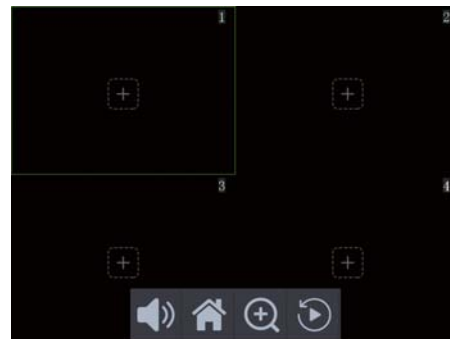
Note: The battery needs to be activated by an external power supply before it can be used normally.

4. Application mode

This equipment is a household product and can be placed in the following manner.



5. Operation instruction



Preview interface

Click the screen to display the menu button " " ,click " " open or close the Preview interface channel volume,click " " enter the main menu interface,click " " enter the video playback interface.



Main menu

- Video playback: Play recorded video
- System setup: System related settings (language, time, network settings, etc.)
- Record setup: set the recording schedule, TF card information and formatting
- Match code: add camera
- Alarm setup: set mobile alarm, APP alarm and other functions
- System manage: system information, factory settings, host upgrade, IPC upgrade, etc.

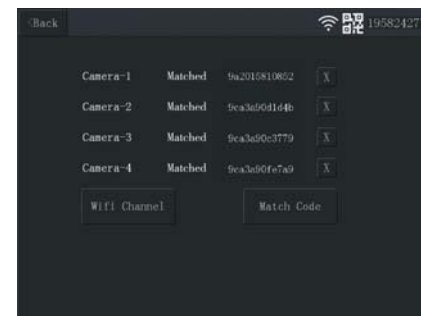
Add wireless camera

Step one: The user star the recorder and camera, and the IPC reset enters the code mode.

Step two: Enter the code interface, click on the code to match.

Tips:

- 1)The camera can only perform the pairing in the reset state; the camera usually presses the reset button to perform the pairing code.
- 2)If the camera still does not match the code after the code has timed out, click "Match Code" again to try again.
- 3)If you need to replace a new camera, please click "X" to delete the channel and then click on the code to match.



Wireless internet access

Enter the main interface, select system settings, select wireless Internet access, and make wireless connection settings.



Step one: open WLAN

Step two: Click "Hotspot list" to select the name of the wireless hotspot you want to connect to.

Step three: enter the correct password

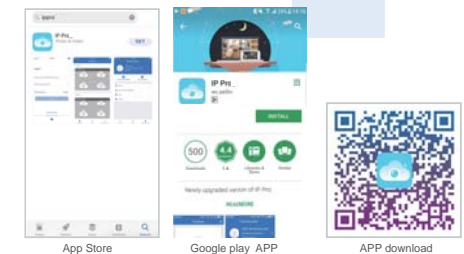
Step four: Click "Back" exit to the wireless settings interface to view the wireless connection status, Indicates successful connection.

Tips: After the network configuration is successful, wait a while (about ten seconds), and wait until the network icon in the upper right corner change " " this indicates that the device is online (APP can be viewed remotely).

6.View On Mobile

1.After the NVR is connected to the Internet, you can download the "IP PRO" APP for remote preview.

You can search for "IP PRO" in the App Store and other application markets, or scan the QR code to download and install, then run the application and take a few minutes to register.



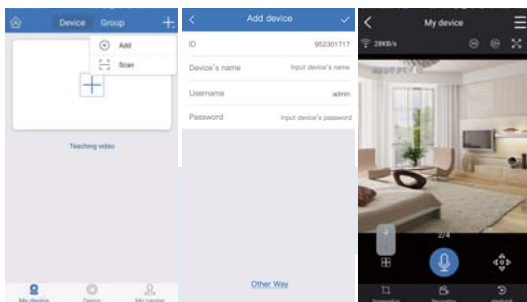
(For IOS system, it requires IOS 8.0 version or above.
For Android, Android 4.4 or above.)

2. Add the NVR system to your APP device list

Step one: enter main menu, click the QR code icon in the top right corner

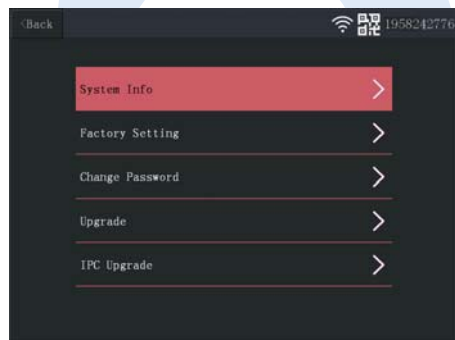
Step two: Open the "IP PRO" app, log in your account → click on the "+" in the upper right corner, then Select "Scan", scan the QR code on the screen to add it directly, or clicking the "+" in the upper right corner. Then select "Add" to enter the "Add devices" interface, select the add method (online device, networked Device), enter the correct ID, when added successfully, it will automatically return to the preview interface for remote access.

Step three: In the "IP PRO" app, if you want to view the video in the NVR system, please click "Remote Playback" to view the video.



7. Daily update maintenance

Enter the main interface, select system settings, select wireless Internet access, and make wireless connection settings.



- (1) **System info:** including device model, cloud ID, software version, etc.
- (2) **Factory setting:** Includes simple restore and restore all settings
- (3) **Change password:** modify the remote access login password
- (4) **Upgrade:** device-side main engine upgrade
- (5) **IPC upgrade:** upgrade the camera

8. FAQ

Q: Does the battery support charging? How to charge?

A: Support charging, battery switch to "OFF", connect to the power adapter.

Q: How long does the fully charged battery work?

A: Generally it can reach 1-2 hours.

Q: Does it support voice intercom, how to talk?

A: Support voice intercom, select the intercom IPC channel, zoom in, click the intercom icon, long press the icon to speak, the intercom function can be realized; when released, the speech ends.

Q: How to turn the alarm sound/doorbell button prompt on or off?

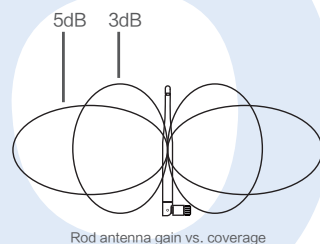
A: Enter the main menu, select the alarm setting, adjust the alarm volume, set the alarm volume to 0, mean turn off all alarm sounds; set to non-zero value, mean the alarm sound turned on.

9. Extend Wireless Range

Wireless connection is simple and convenient, but wireless is not a panacea! Because of the nature of wireless, decided in some complicated scenarios, there is a signal attenuation after passing through the obstacle. Following Some methods can circumvent obstacles and increase the signal transmission distance.

Position the Antenna Correctly

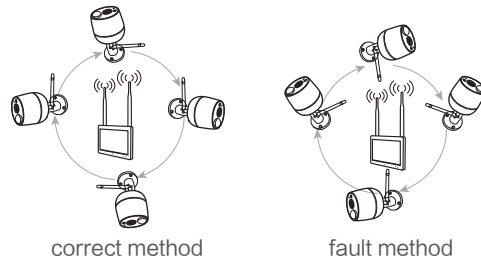
As can be seen from the gain graph of the rod antenna below, The signal coverage of the antenna is similar to an apple. The antenna is located in the center of the apple and surrounds the antenna. The signal is strong, and the upper and lower ends of the antenna are recessed, and the signal is weak.



Rod antenna gain vs. coverage

According to the transmission characteristics of the antenna to the signal, in order to ensure the optimal image transmission effect of the wireless set, Claim:

- 1. NVR and IPC antennas should be placed in high places, not on the walls, metal, Obstructions such as glass affect the signal to diverge outward.
- 2. The antenna of IPC should be placed in parallel with the NVR antenna to maximize the respective radiation direction angles. In contrast, the maximum coverage of the signal is formed, as shown in the following figure.



correct method

fault method

10. FCC Statement

This equipment has been tested and found to comply with the limits for a Class B digital device, pursuant to part 15 of the FCC rules. These limits are designed to provide reasonable protection against harmful interference in a residential installation. This equipment generates, uses and can radiate radio frequency energy and, if not installed and used in accordance with the instructions, may cause harmful interference to radio communications. However, there is no guarantee that interference will not occur in a particular installation. If this equipment does cause harmful interference to radio or television reception, which can be determined by turning the equipment off and on, the user is encouraged to try to correct the interference by one or more of the following measures:

- (1) Reorient or relocate the receiving antenna.
- (2) Increase the separation between the equipment and receiver.
- (3) Connect the equipment into an outlet on a circuit different from that to which the receiver is connected.
- (4) Consult the dealer or an experienced radio/TV technician for help.

Responsible for compliance could void the user's authority to operate this equipment. (Example- use only shielded interface cables when connecting to computer or peripheral devices).

This equipment complies with Part 15 of the FCC Rules. Operation is subject to the following two conditions:

- (1) This device may not cause harmful interference, and
- (2) This device must accept any interference received, including interference that may cause undesired operation.

FCC Radiation Exposure Statement:

Any Changes or modifications not expressly approved by the party responsible for compliance could void the user's authority to operate the equipment.

The equipment complies with FCC Radiation exposure limits set forth for uncontrolled environment. This equipment should be installed and operated with minimum distance 20cm between the radiator and your body.

11. After-sales service

Attention

- 1. Product failure caused by the following conditions is not covered by the warranty:
 - a. Product failure due to accident, negligence, disaster, improper operation or mishandling;
 - b. Improper use of the environment or conditions, such as power failure, ambient temperature, lightning strikes, etc., resulting in product failure;

- c. Products that have been repaired by a non-factory authorized maintenance unit;
- d. The products sell more than 12 months.
- 2. When the user finds that the product appeared faulty, please contact the distributor or local service organization for technical service with the user registration card.
- 3. When the user has any objection to the technical service provided by the distributor, he can complain to the manufacturer's customer support service center.
- 4. The warranty card must be valid after being stamped by the warranty unit.



Warranty service

Please fill in the warranty card details and return the warranty card to the manufacturer. The manufacturer will register and record the following benefits:

- 1. With this card, enjoy the free warranty and warranty period during the warranty period.
- 2. The user has a free replacement period of 7 days due to quality problems since the date of purchase, and the warranty period is 1 year.
- 3. Give priority to information about the new product information or preferential activities of the manufacturer.
- 4. Anyone who completes the registration has the opportunity to participate in training or other activities that are not regularly held.

Warranty card

User name: _____
Address: _____
Tel: _____ Fax: _____ Zip code: _____
E-mail: _____
Product type (Model): _____
Product code (S/N): _____
Production date: _____ year _____ month _____ day
Purchase date: _____ year _____ month _____ day
Free warranty: _____ month
If you have any require, please write here:

distributor: _____ Phone: _____
Distribution unit: (Stamp)

Maintenance records:

Date	Fault phenomenon	Repair and serial number change

Note: If need to exchange, please record the original product number; This union distributor to keep