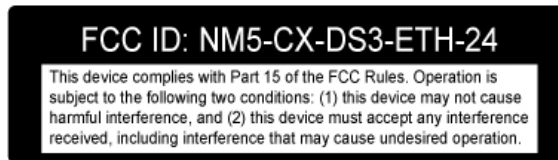
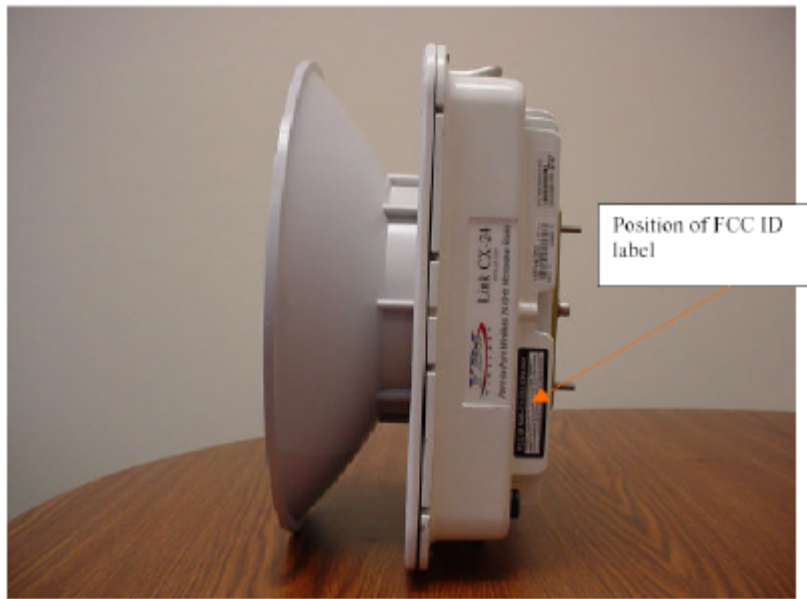


The label material is made from .005" thick G.E. Lexan film, velvet matte with an adhesive backing. Both adhesive and label material will last the lifetime of the product.

The label is shown below in Photograph 1.



The label location on the exterior of the Link CX 24GHz is shown in Photograph 2.



Photograph 2: Label Location on Exterior of Link CX 24GHz