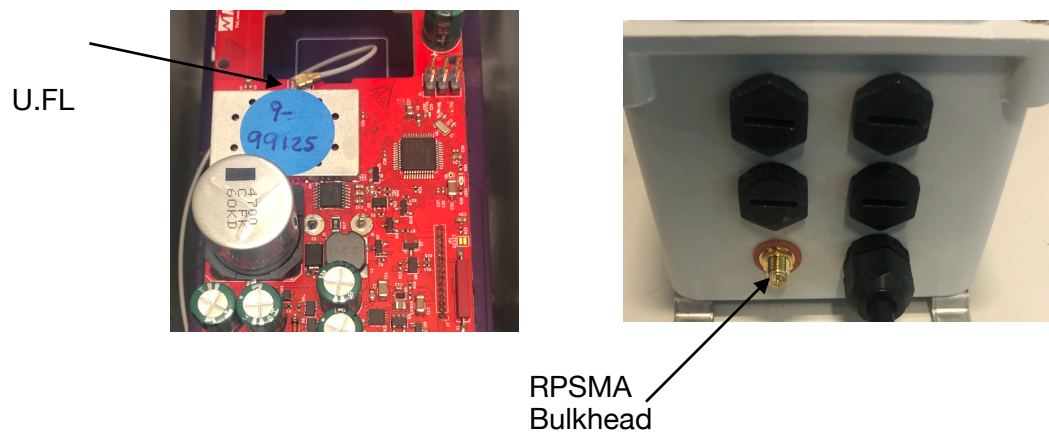


## Twig V UNO Antenna Info

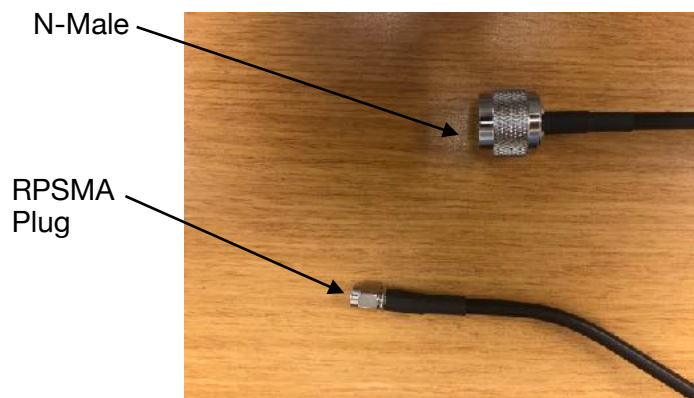
### Overview:

The TWIG V UNO module is factory configured to utilize either the on-board internal antenna described below, or an external antenna via the on-board U.FL connector (J3). The external antennas described below are connected to the module using the u.FL to RPSMA bulkhead cable described below followed by the RPSMA to N-Male cable described below.

- U.FL to RPSMA Jack Bulkhead, Pigtail 20 cm (L-Com #CA-UFLRSBQC20)

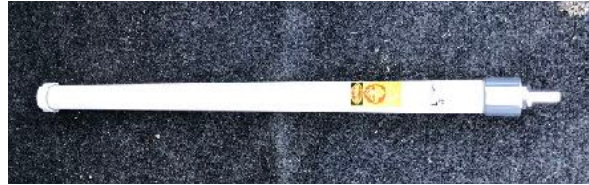


- RPSMA Plug to N-Male, Pictail 4 ft CA-195 coax (L-Com #CA-RSPNMA004)



External Antenna Options:

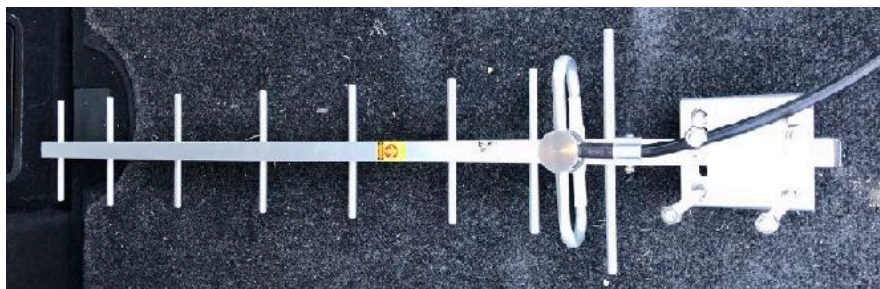
1. Omni: L-Com, model number #HG906UP-NF, 6dBi, omni installed in a vertical orientation



2. Yagi: L-Com, model number L-Com #HG909Y-NF, 9dBi, yagi installed in vertical polarization orientation



3. Yagi: L-Com, model number HG912YE-NF, 12dBi, yagi installed in vertical polarization orientation



Internal Antenna:

1. Nelson Irrigation, model number #13732, ~ -3.4 dBi, meandered monopole with a trace width of 0.5mm.

