



To whom it may concern:

Lucid FCC ID: 2AXZJ-K2B100 / IC ID: 27970-K2B100 Module UM / Photos

The User manual and Photos for FCC ID : 2AXZJ-K2B100 / IC : 27970-K2B100 which Lucid is applying for Change of ID / Multiple listing have no changes to the original module from Ublox JODY-W354.

Sincerely,

A handwritten signature in black ink, appearing to read "Tommy Wong".

Signature

Name:	Tommy Wong
Title:	Technical Specialist, EMC Compliance Engineer
Company Name:	Lucid USA, Inc.
Address:	7373 Gateway Blvd, Newark, CA 94560
Phone:	(650) 802-8181
E-Mail:	tommywong@lucidmotors.com

JODY-W354 photos

Topic :	JODY-W354 photos		
Doc.No:	UBXDOC-885269510-18124		
Revision	R01		
	Date:	Name	Signature
Created	06-Sep-2022	Franck Campagna	frca
Checked			
Released	06-Sep-2022	Franck Campagna	frca

We reserve all rights in this document and in the information contained therein. Reproduction, use or disclosure to third parties without express authority is strictly forbidden. © 20168 u-blox AG

1 Scope

This document provides internal and external photos of the JODY-W354-00A modules. It is part of the equipment certification application issued to FCC and ISED. The photos have been taken with the RF shield mounted and removed.

2 FCC/IC ID reference

Ordering Code(s)	FCC ID	ISED ID
JODY-W354-00A	XPYJODY-W374	8595A-JODYW374

Table 1: FCC and IC IDs for the JODY-W354-00A

3 Top view

3.1 Internal photos

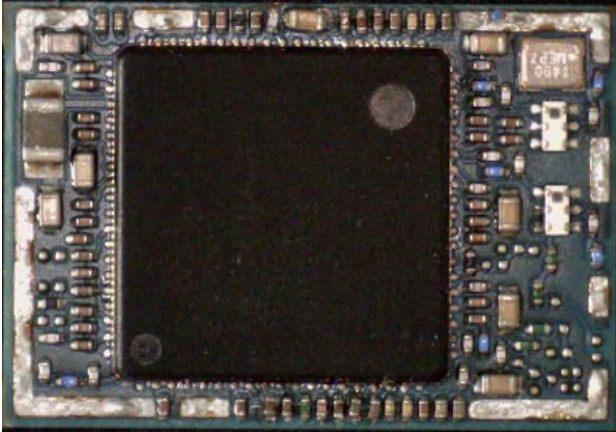


Figure 1: JODY-W354-00A internal photo

3.2 Internal photos



Figure 2: JODY-W354-00A top view external photo

4 Bottom view

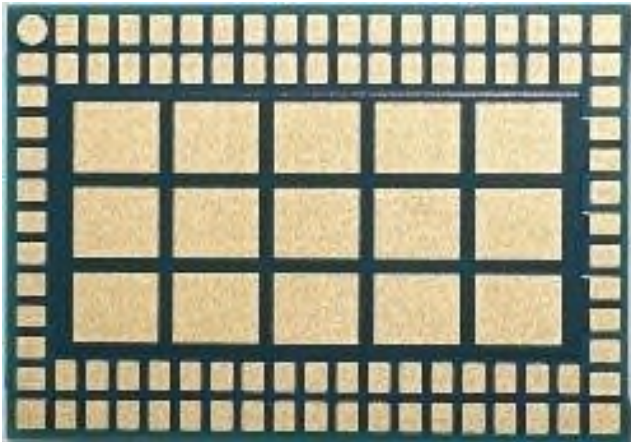


Figure 3: Bottom view of JODY-W354-00A bottom view

JODY-W3x4-20A photos

Topic :	JODY-W3x4-20A photos		
Doc.No:	UBXDOC-885269510-32816		
Revision	R01		
	Date:	Name	Signature
Created	21-Nov-2022	Franck Campagna	frca
Checked			
Released	21-Nov-2022	Franck Campagna	frca

We reserve all rights in this document and in the information contained therein. Reproduction, use or disclosure to third parties without express authority is strictly forbidden. © 20168 u-blox AG

1 Scope

This document provides internal and external photos of the JODY-W3x4-20A modules. It is part of the equipment certification application issued to FCC and ISED. The photos have been taken with the RF shield mounted and removed.

2 FCC/IC ID reference

Ordering Code(s)	FCC ID	ISED ID
JODY-W354-20A	XPYJODY-W374	8595A-JODYW374
JODY-W374-20A	XPYJODY-W374	8595A-JODYW374

Table 1: FCC and IC IDs for the JODY-W3x4-20A

3 Top view

3.1 Internal photos

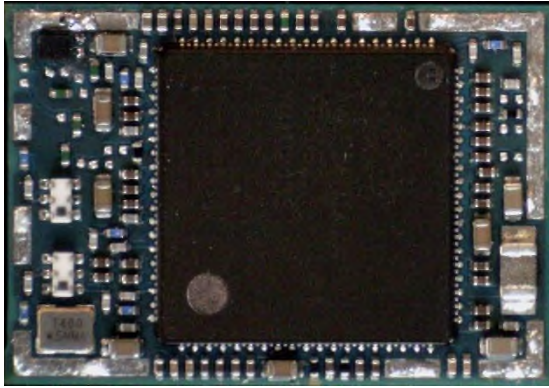


Figure 1: JODY-W354-20A internal photo



Figure 2: JODY-W374-20A internal photo

3.2 Internal photos



Figure 3: JODY-W354-20A top view external photo



Figure 4: JODY-W374-20A top view external photo

4 Bottom view

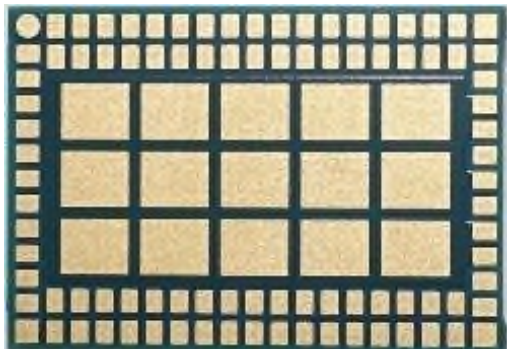


Figure 5: Bottom view of JODY-W3x4-20A bottom view