

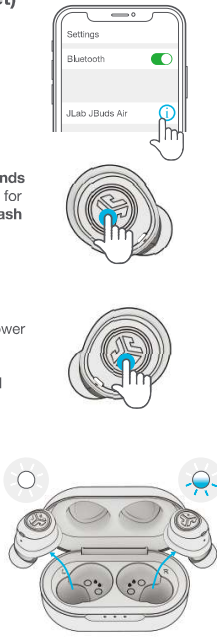
113mm±2mm

84mm

TROUBLESHOOTING

No audio in left earbud or earbuds are disconnected from each other (Manual Reset)

- 1 Enter your Bluetooth device settings and forget the JBuds Air.
- 2 Take out **ONE** earbud from the charging case. Press and hold the button **5+ seconds** to power OFF. Press and hold once more for **15+ seconds**. Earbud will turn on then **flash white** and power OFF. Once OFF, place back in the charging case.
- 3 Repeat for other earbud. Take out from the charging case, Press and hold the power button **5+ seconds** to power OFF. Press and hold once more for **15+ seconds**. Earbud will turn ON then **flash white** and power OFF. Once OFF, place back in the charging case.
- 4 Take both earbuds out of the charging case. Wait for Left earbud to turn **solid white** and Right to **blink blue/white**. You are now ready to pair to your Bluetooth device.

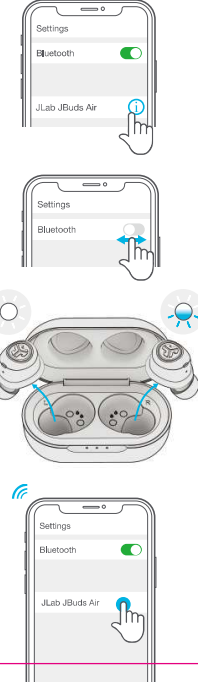


TROUBLESHOOTING

Bluetooth device does not connect/reconnect

- 1 Enter your Bluetooth device settings and forget the JBuds Air.
- 2 On your device, turn OFF then ON Bluetooth.
- 3 Take the earbuds out of the case. Wait for Left to turn **solid white** and Right **blinking blue/white**.
- 4 Select "JLab JBuds Air" in device settings to reconnect.

Instructional videos at: JLABAUDIO.COM



3 MONTHS FREE TIDAL

With purchase. Visit jlabaudio.com/tidal

Warm-up Your Headphones

Optional: Burn-in your audio equipment with the JLab Audio App or access the burn-in method at: jlabaudio.com/burnin



JLab Audio + Burn-in Tool



US Compliance

FCC Information

FCC ID: 24HYV-JAR

This device complies with part 15 of the FCC Rules. Operation is subject to the following two conditions:
(1) This device may not cause harmful interference, and
(2) this device must accept any interference received, including interference that may cause undesired operation. Any Changes or modifications not expressly approved by the party responsible for compliance could void the user's authority to operate the equipment. This equipment has been tested and found to comply with the limits for a Class B digital device, pursuant to part 15 of the FCC Rules. These limits are designed to provide reasonable protection against harmful interference in a residential installation. This equipment generates uses and can radiate radio frequency energy and, if not installed and used in accordance with the instructions, may cause harmful interference to radio communications. However, there is no guarantee that interference will not occur in a particular installation. If this equipment does cause harmful interference to radio or television reception, which can be determined by turning the equipment off and on, the user is encouraged to try to correct the interference by one or more of the following measures:

- Reorient or relocate the receiving antenna.
- Increase the separation between the equipment and receiver.

-Connect the equipment into an outlet on a circuit different from that to which the receiver is connected.
-Consult the dealer or an experienced radio/TV technician for help. The device has been evaluated to meet general RF exposure requirement. The device can be used in portable exposure condition without restriction.

IC Statement

This device contains licence-exempt transmitter(s)/receiver(s) that comply with Innovation, Science and Economic Development Canada's licence-exempt RSS(s). Operation is subject to the following two conditions:
This device may not cause interference.
This device must accept any interference, including interference that may cause undesired operation of the device.

L'émetteur/récepteur exempt de licence contenu dans le présent appareil est conforme aux CNR d'Innovation, Sciences et Développement économique Canada applicables aux appareils radio exempts de licence. L'exploitation est autorisée aux deux conditions suivantes :

1. L'appareil ne doit pas produire de brouillage;
2. L'appareil doit accepter tout brouillage radioélectrique subi, même si le brouillage est susceptible d'en compromettre le fonctionnement.

EU Compliance

PEAG LLC dba JLab Audio hereby declares that this device is in compliance with the essential requirements and other relevant provisions of the RED directive.

A copy of the EU Declaration of Conformity is available at jlabaudio.com/compliance

JLab Audio

2281 Las Palmas Drive, Suite 101, Carlsbad, CA 92011, USA

The symbol above indicates that this product and/or battery should not be disposed of with household waste. When you decide to dispose of this product and/or its battery, do so in accordance with local environmental laws and guidelines.

Battery Caution & Disposal Information

Please take care of your battery. Do not: disassemble, burn, puncture, crush or bend your battery. Improper operation of the battery may produce smoke. In such an event, ventilate the area. Extinguish any flames with carbon dioxide, dry-powder fire extinguisher, or cover with sand or mud. Take care to avoid conditions of excessive moisture for prolonged periods and do not immerse. Do not expose to temperatures above 50°C/122°F. Charge battery fully before storage or if stored for longer than three months.

Disposal
At the end of its life, please take care to dispose of this product responsibly. Electronic products and batteries contain materials that can be harmful to the environment. Please do not dispose of unsorted waste. Take your electronic waste to a designated collection or recycling facility to be recycled properly. Your local council authority will be able to tell you where your nearest facilities are. There may be one at your local supermarket.



Bluetooth

QUICK START GUIDE

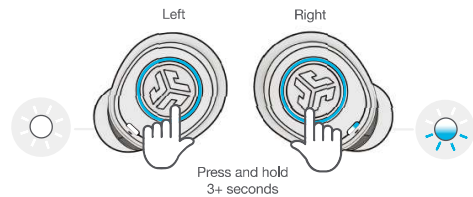


24+ HOURS of PLAYTIME

JBUDSAIR
TRUE WIRELESS
SIGNATURE EARBUDS

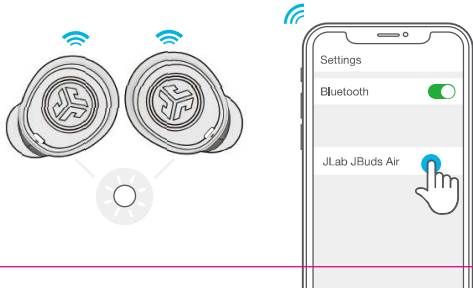
FIRST TIME SETUP

- 1 **AUTO-CONNECTING EARBUDS**
Press and hold **both buttons 3+ seconds** to power ON. The Left earbud turns **solid white** and Right earbud **blinks blue/white** indicating ready to pair to your device.



2 CONNECTING BLUETOOTH

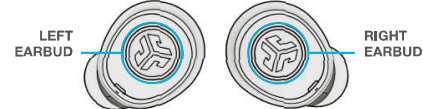
Select "JLab JBuds Air" in your device settings. Voice prompt "Bluetooth connected" followed by **solid white lights** will indicate you are connected.



ADDING NEW/ADDITIONAL BLUETOOTH DEVICES:

Turn OFF Bluetooth from any previously connected device. Turn ON Bluetooth from new device. Take earbuds out of the case. Earbuds will automatically enter Bluetooth Pairing. Select "JLab JBuds Air" in new device settings to connect.

BUTTON FUNCTIONS



- VOLUME DOWN:** Single press
SIRI (iOS) or "OK GOOGLE" (ANDROID): Double press
TRACK BACK: Press & hold 1+ sec
TURN ON: Press & hold 2+ sec
TURN OFF: Press & hold 5+ sec
CHANGE EQ: Triple press (JBuds Air will cycle 3 EQ settings)
- VOLUME UP:** Single press
ANSWER: Single press
HANGUP: Double press
REJECT INCOMING CALLS: Press & hold 1+ sec
PLAY / PAUSE: Double press
TRACK FORWARD: Press & hold 1+ sec
TURN ON: Press & hold 2+ sec
TURN OFF: Press & hold 5+ sec
CHANGE EQ: Triple press (JBuds Air will cycle 3 EQ settings)

CUSTOM EQ³ SOUND MODES

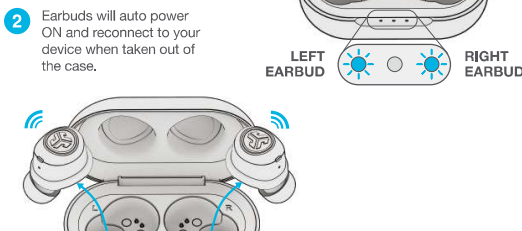
Voice prompts will indicate EQ settings.



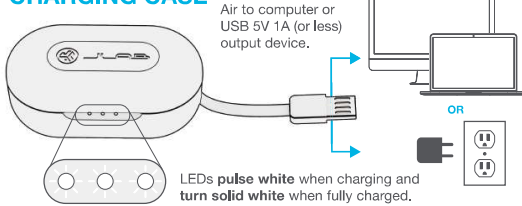
CHARGING EARBUDS

- 1 Match the corresponding L and R letters on the charging case for proper charging. The earbuds will auto power OFF and start charging.

Blue lights will indicate earbuds are charging and will turn OFF when fully charged.



CHARGING CASE

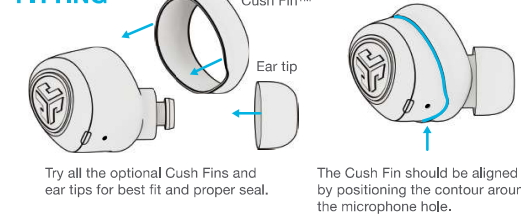


VOICE PROMPTS

"Hello": Power ON
"Earbuds joined": Earbuds paired to each other
"Ready to Pair": JBuds Air are ready to pair to Bluetooth device
"Bluetooth Connected": Earbud is connected to device

"Battery Full": 100-80%
"Battery Medium": 80-20%
"Low Battery": Less than 20%
When power decreases to 10%, "Low Battery" will play
"Goodbye": Power OFF

FITTING



QUICK TIPS

- Fully dry off the earbuds before putting in the charging case to avoid any damage to the case. The earbuds are sweat/water resistant but the case is not.
- The Bluetooth connection is established from the right earbud. For the most stable connection, keep the device near right hand side or in right pocket.
- If you prefer to wear only one earbud, you must wear the **right earbud** as this is the main earbud connected to Bluetooth.
- Choosing the correct ear tip makes a significant improvement in audio quality due to proper seal for the driver. Try all ear tips for best results.
- Only ONE Bluetooth device can be connected at a time. Turn off Bluetooth from unwanted devices and turn on Bluetooth from chosen device to connect.

For full User Manual and troubleshooting, please visit JLABAUDIO.COM

Contact Us

If you're unsatisfied with your purchase, please contact us and we'll take care of you! You can contact our US based customer support team:
Website: jlabaudio.com/contact
Email: support@jlabaudio.com
Phone U.S.: +1 (405) 445-7219 (M-F 8am-5pm PT)
Phone U.K.: +44 (20) 3884 3322 (M-F 1600-0100 GMT)
Visit jlabaudio.com/warranty to initiate a return or exchange.



OFFICIAL AUDIO PARTNER OF MAJOR LEAGUE SOCCER

#FINDYOURGO

QUICK START GUIDE

For full User Manual
+ other JLab products visit
JLABAUDIO.COM



Date: 05.17.19

PROJECT: JBuds Air Wireless QSG

STOCK: 220g, MATTE

INK: 4/4 CMYK / CMYK

FLAT SIZE: 13.5433" x 4.7244"

FOLDED SIZE: 3.3858" x 4.7244"

420mm±2mm