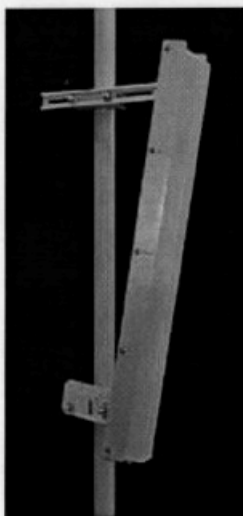




## AN1709 Sector Antenna P/N 901709

**2400 - 2485 MHz**



The TA-2304-2-ISM is a vertically polarized sectoral antenna which has adjustable side panels for 60-160 degree azimuth patterns. The antenna consists of a printed dipole array enclosed in an aluminum base with a UV stabilized radome for superior weatherability. It is designed for wireless data in the ISM band and is at DC ground for lightning protection.

### Electrical Specifications

**Frequency Range:** 2400-2485 MHz  
**Gain: (dBi)** 17.5 @ 60° 15.5 @ 90°  
 14.5 @ 120° 13 @ 160°  
**VSWR:** 1.5:1 max.  
**Front/Back Ratio:** 20 dB min.  
**Polarization:** Vertical  
**Power Rating:** 200 Watts  
**H-Plane Beamwidth:** 60, 90, 120, 160 degrees  
**E-Plane Beamwidth:** 7.2 degrees  
**Cross Pol. Discrimination:** 20 dB min.  
**Impedance:** 50 ohms nominal  
**Termination:** N female (7/16 DIN optional)

Typical Mid band values. (For details, contact factory)

### Mechanical Specifications

**Length:** 40 in. (1016 mm)  
**Width:** 4.9 in. (124 mm)  
**Depth:** 4.6 in. (117 mm)  
**Weight (Incl. Clamps):** 8 lb. (3.6 kg)  
**Rated Wind Velocity:** 125 mph (200 km/h)  
**Hor. Thrust at rated wind:** 86 lb. (39 kg)  
**Mechanical Downtilt:** 0 - 15 (optional)  
**Mounting Pipe:** 0.75 - 3.0 in. (19 - 76 mm)

### Materials

**Radiating Elements:** Plated copper on PCB  
**Reflector:** Irridited aluminum  
**Radome:** Gray UV stabilized ASA  
**Clamps:** Aluminum and HDG steel

