

USER MANUAL

Mobile Phone
Model: AX705

Table of Contents

1. Foreword	1
2. Getting know your phone.....	4
3. Starting up the device	6
4. Introduce the basic phone function	9
5. Technical Specifications	17
6. FCC Cautions.....	18

Android, Google, Google Play and other marks are trademarks of Google Inc.

1. FOREWORD

Safety

In order to ensure the phone is used safely and correctly, please read the precautions below carefully before use.

1.1 General precaution

- Your phone is only suitable for the battery and charger approved by our company or else it may cause the battery to leak, overheat, explode or even catch fire.
- Do not knock, vibrate or throw the phone heavily to avoid malfunction, fire, overheating, explosion or fire.
- If there are abnormal phenomena, like temperature rising, color change or distortion during the usage, charging or storage of the battery, please stop using it and replace it with a new battery.
- It may burn the skin if liquid in the battery leaks onto skin or clothes. If this happens please flush with plenty of clean water immediately and go to a hospital at once.
- Please keep the battery away from fire to avoid fire and explosion if the battery leaks or emits a strange smell.
- Do not place expose the battery to moisture or it may cause overheating, fumes and corrosion.
- Do not use or place the battery under direct sunlight, or in hot places, it may cause leakage and overheating, thus reducing performance and shortening the lifespan.
- Do not charge the battery for over 24 hours continuously.
- Use careful with the earphone maybe possible excessive sound pressure from earphones and headphones can cause hearing loss.

1.2 Precaution for the use of charger

- Do not cause short circuit to the charger, or it may cause electric shock, fumes and damage to the charger.
- Do not use the charger if the power wire is broken, or it may cause fire and electric shock.
- Please remove accumulated dust on the power plug.
- Do not put water containers next to the power supply to avoid overheating, fire, electric shock and malfunction in case they come into contact.
- Do not disassemble or tamper with the charger or it may cause personal injury, electric shock, fire and the damage of the charger.
- Do not use the charger in places of high humidity, like bathrooms, or it may cause electric shock, fire and damage of charger.
- Do not touch the charger, power cord or power plug with wet hands or it can cause electric shock.
- Do not put heavy objects on the power cord or change the power cord or it may cause electric shock and fire.
- Please unplug the power socket before cleaning and maintenance.
- Please hold the charger to unplug the socket as pulling the power cord may damage the power wire and cause electric shock and fire.

1.3 Cleaning and maintenance

- As the phone, battery and charger are not waterproof, do not use them in places of high humidity and avoid them being wet by rain.
- Please clean the battery and charger with a soft dry cloth.
- Never use alcohol, thinner or solutions, like benzene, to wipe the phone.

•Dirty sockets can cause poor contact and power down, and even make recharging unavailable.
So, please clean them periodically.

1.4 Common Precaution

Mobile Phone:

•Please use the phone in an environment with temperature between -20°C- 45°C and humidity of

<75%.

•Please use the phone far away from regular telephones, TV sets, radio sets and office automation equipment, to avoid affecting the normal use of these equipment and mobile phone.

Battery:

•Store the battery in cool and ventilated place without direct sunlight.

•The battery has a limited lifespan. The usage of battery will be shortened progressively due to frequent charging. Once the battery is out of use, it means that its lifespan has ended, and you will need to replace it with an approved new battery.

•Do not dispose of old batteries as household waste. Give them to specified disposal places and follow any stipulated instructions for disposal.

CAUTION: RISK OF EXPLOSION IF BATTERY IS REPLACED BY AN INCORRECT TYPE.

DISPOSE USED BATTERIES ACCORDING TO THE INSTRUCTIONS OF YOUR COUNTRY.

Charger:

•Do not charge under following conditions:

-- Places with direct sunlight

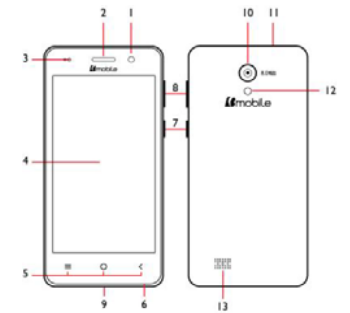
-- Places with ambient temperature less than 0°C or over 40°C, wet or dusty places with strong

vibrations (it may cause malfunction)

-- Places near electrical appliances (it may affect the image and sound) like TV set, radio, etc.

-- Adapter shall be installed near the equipment and shall be easily accessible. The plug considered as disconnect device of adapter

2. GETTING KNOW YOUR PHONE



1. Front Camera
2. Receiver
3. Proximity Sensor

4. LCD Display
5. Settings/Home/Back button
6. Microphone
7. Turn on / Off Button
8. Volume Buttons
9. USB / Charger Connector
10. Back Camera
11. Headphone connector (Jack 3.5)
12. LED Flash
13. Loud Speaker

The number of icons in the main desk or the main menu will be according the quantity of applications installed on your device.

3. STARTING YOUR DEVICE

- Make sure your device is turned off.
- Firmly hold the device with the front panel facing down.
- Slide your finger into the groove designed to open it and gently pull open the back cover.

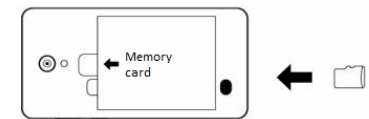
To install the SIM card

- Remove the battery if it is installed.
- Locate the SIM card slot, and then insert the SIM card with its gold contacts and its cut-off corner as shown in the diagram.
- Slide the SIM card completely into the slot.



To install a memory card

To have additional storage for your images, videos, music and files, you can purchase a memory card and install it in your device. Locate the memory card slot and Insert the memory card into the slot as indicated by the image.



To install the battery

1. Align the battery's exposed copper contacts with the battery connectors at the bottom part of the battery compartment.
2. Insert the contacts side of the battery first and then gently push the battery into place. Replace the back cover.

Charging the Battery

New batteries are shipped partially charged. Before you start using your device, it is recommended that you install and charge the battery. Some batteries perform best after several full charge/discharge cycles.

Note: Only the AC adapter and USB sync cable provided with your device must be used to charge the device.

Connect the USB connector of the AC adapter to the sync connector on your device, and then plug in the AC adapter to an electrical outlet to start charging the battery.

As the battery is being charged while the device is on, a charging icon appears in the title bar in the Home screen. After the battery has been fully charged, a full battery icon appears in the title bar of the Home screen.

Warning:

- Do not remove the battery from the device while you are charging it using the AC or car adapter.
- As a safety precaution, the battery stops charging before it overheats.

Power on/off

To power off your phone, press & hold POWER. On release, the Phone options menu opens. Select 'Power off' and confirm.

To power on again, press & hold power

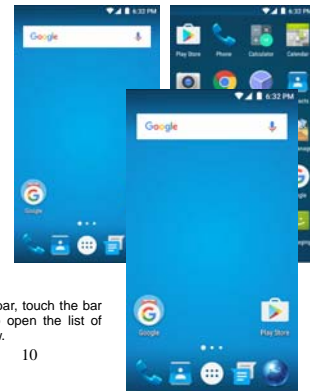
4. INTRODUCE THE BASIC PHONE FUNCTIONS

4.1. Switch Main Menu style

(1) In default Home screen, slide your fingertip left and right along the screen to reveal the more

home screen.

(2) On Home screen, click icon on the bottom of the screen (Main menu icon) to enter the main menu screen, slide your fingertip left and right along the screen to reveal the more applications.



4.2. Home screen

(1) Read your notifications

When you see a notification in the status bar, touch the bar and slide your finger down the screen to open the list of notifications displayed in the sliding window.

Ongoing notifications report activities such as call forwarding ON, current call status, song playing.
Notifications report the arrival of new messages, calendar events, and alarms. You can clear notifications list by selecting 'Clear' notifications at the top of the notifications window.
To open the message, reminder or other notification, you can touch the items. To close the notifications window, slide your finger up the screen.

(2) Create Home screen shortcuts and widgets:
From the Home screen, touch and hold the blank screen, or click MENU Key and select 'Wallpaper'. Enter the main menu screen, slide your fingertip left to reveal the widget, select a shortcut to some of your saved information (such as a play list), a widget (a clock) for your Home screen.
(3) Move objects on the Home screen
•To move an icon or other item on the Home screen, you

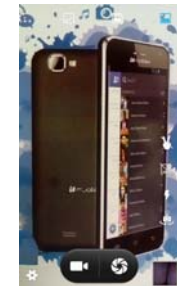


must first touch & hold i t to enter move mode. The object will magnify when it's ready to be moved.

•Without lifting your finger (or you'll drop out of move mode), drag the object to the new position. To move an item to a section of the Home screen not in view, move it to the edge of the screen and hold it there for a moment. The screen view will shift; position the object and release.

4.3. Camera

All the pictures you can are stored on a memory card, phone. Before you can use Pictures, make sure you have



capture or view on your phone which must be installed in your the Camera or view pictures in a card installed.

4.4. GPRS/WIFI network

Your device's networking capabilities allow you to access the Internet or your corporate network through WIFI, GPRS, EDGE or WCDMA. (If available)

You can also add and set up a VPN or proxy connection.

To use WIFI on your device, you need access to a wireless access point



Note: The availability and range of your device's WIFI signal depends on the number, infrastructure, and other objects through which the signal passes. When your phone is in of the normal WCDMA or HSPA network coverage, and the other side (The receiver's phone and SIM card) can also be supported the video call function of 3G.To open the Browser you need to be connected to a network.

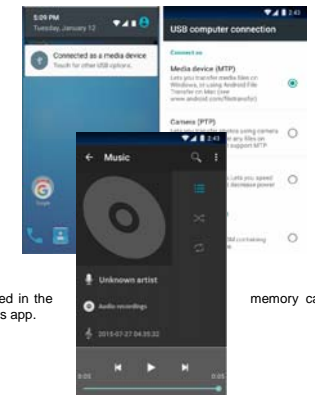
When you open the WIFI or GPRS of touch phone, you can take it as a wireless AP, and the other phone or computer can internet through the WIFI connect with your touch phone. Step 1: open Setting, then press more, get Tethering & portable hotspot

Step 2: open Wi-Fi hotspot, choose Set up Wi-Fi hotspot, and set a new password

Step 3: open the WIFI on other touch phones or computers, search the WIFI that your phone as a wireless AP, then input the password, by the way you can net play.

4.5. U-disk storage

This phone supports movable storage, i.e., the U-disk function. When the phone is switched on, you see the icon in the status bar on the top of the screen when its connected to a PC by a data line. Touch the bar and slide your finger down the screen to open the list of notifications displayed in the sliding window. Select [USB connected] and touch [Turn on USB storage] to confirm, you can use the phone as a U-disk.



4.6. Music
Songs that you saved in the
can be played on this app.

memory card or phone storage

4.7. Bluetooth

The phone supports Bluetooth functions, you can establish a wireless connection between the phone with other compatible devices, and data transmission, and you can establish a wireless connection between devices in the phone with a distance of several meters. Bluetooth connection may be interference by obstacles, such as walls or other electronic device.

Enter the setting menu; Touch the Bluetooth to open the function, idle screen will display Bluetooth icon in the status bar.
Open the Bluetooth discoverable and other devices can search the phone.
Before using the phone as a Bluetooth device, you need to pair the phone with the target device.
As follows:
-Sure your phone has Bluetooth-enabled.
-Touch "Scan for devices." Bluetooth devices within the range of the phone will start scanning.
-Touch the device you want to pair, to confirm password to complete the pairing
You can use Bluetooth to share the pictures, videos or music files with family and friends
4.8 FM Radio
The device includes a FM Radio application. To use this function you have to go to the main menu and select it. Is very important that to ensure the right operation of the FM radio you make sure the earphones are plugged in the phone.
4.9 Calculator
Use this feature to make basic calculations such as addition, subtraction, multiplication and division, also you can find more calculation options sliding your finger to the left on the numeric keypad.

5. TECHNICAL SPECIFICATIONS

Weight	132g
Dimensions	136.7 x 67.2 x 9.4 mm

Band	GSM850MHz/PCS1900MHz/WCDMA850MHz/WCDMA1900MHz
Battery Type	Li-ion
Battery Capacity	1700 mAh
Talk Time	4-5 h
Standby Time	200h

Battery Time (No prior or separate notice is required for capacity changes)
Note: Actual operating conditions depend on the local network environment, SIM, and user behavior. Warning: Any consequence caused by misuse, abuse, or not following any and all of the above-written suggestions and instructions shall not hold the producer in any way responsible to any degree. Announcement: The manufacturer reserves the right to change or upgrade specifications or software versions without prior or separate notice. Trademarks mentioned in this material belong to their respective owners.
Any Changes or modifications not expressly approved by the party responsible for compliance could void the user's authority to operate the equipment.

6. FCC CAUTIONS

15.19 Labelling requirements

This device complies with part 15 of the FCC Rules. Operation is subject to the following two conditions: (1) This device may not cause harmful interference, and (2) this device must accept

any interference received, including interference that may cause undesired operation.

15.21 Information to user

Any Changes or modifications not expressly approved by the party responsible for compliance could void the user's authority to operate the equipment.

15.105 Information to the user

Note: This equipment has been tested and found to comply with the limits for a Class B digital device, pursuant to part 15 of the FCC Rules. These limits are designed to provide reasonable protection against harmful interference in a residential installation. This equipment generates, uses and can radiate radio frequency energy and, if not installed and used in accordance with the instructions, may cause harmful interference to radio communications. However, there is no guarantee that interference will not occur in a particular installation. If this equipment does cause harmful interference to radio or television reception, which can be determined by turning the equipment off and on, the user is encouraged to try to correct the interference by one or more of the following measures:

- Reorient or relocate the receiving antenna.
- Increase the separation between the equipment and receiver.
- Connect the equipment into an outlet on a circuit different from that to which the receiver is connected.
- Consult the dealer or an experienced radio/TV technician for help.

SAR Information Statement

Your wireless phone is a radio transmitter and receiver. It is designed and manufactured not to exceed the emission limits for exposure to radiofrequency (RF) energy set by the Federal Communications Commission of the U.S. Government. These limits are part of comprehensive guidelines and establish permitted levels of RF energy for the general population. The guidelines are based on standards that were developed by independent scientific organizations through periodic and thorough evaluation of scientific studies. The standards include a substantial safety margin designed to assure the safety of all persons, regardless of age and health. The exposure standard for wireless mobile phones employs a unit of measurement known as the Specific Absorption Rate, or SAR. The SAR limit set by the FCC is 1.6 W/kg. * Tests for SAR are conducted with the phone transmitting at its highest certified power level in all tested frequency bands. Although the SAR is determined at the highest certified power level, the actual SAR level of the phone while operating can be well below the maximum value. This is because the phone is designed to operate at multiple power levels so as to use only the power required to reach the network. In general, the closer you are to a wireless base station antenna, the lower the power output. Before a phone model is available for sale to the public, it must be tested and certified to the FCC that it does not exceed the limit established by the government adopted requirement for safe exposure. The tests are performed in positions and locations (e.g., at the ear and worn on the body) as required by the FCC for each model. The highest SAR value for this model phone when tested for use at the ear is 1.06 W/Kg and when worn on the body, as described in this user guide, is 0.79 W/Kg (Body-worn measurements differ among phone models, depending upon available accessories and FCC requirements). The maximum scaled SAR in hotspot mode is 1.37 W/Kg. While there may be differences between the SAR levels of various phones and at various positions, they all meet the government requirement for safe exposure. The FCC has granted an Equipment Authorization for this model phone with all reported SAR levels evaluated as in compliance with the FCC RF exposure guidelines. SAR information on this model phone is on file with the FCC and can be found under the Display Grant section of <http://www.fcc.gov/oet/fccid> after searching on

FCC ID: [ZSW-30-029](#) Additional information on Specific Absorption Rates (SAR) can be found on the Cellular Telecommunications Industry Association (CTIA) web-site at <http://www.wow-com.com>. * In the United States and Canada, the SAR limit for mobile phones used by the public is 1.6 watts/kg (W/kg) averaged over one gram of tissue. The standard incorporates a substantial margin of safety to give additional protection for the public and to account for any variations in measurements.

Body-worn Operation

This device was tested for typical body-worn operations. To comply with RF exposure requirements, a minimum separation distance of 15 mm must be maintained between the user's body and the handset, including the antenna. Third-party belt-clips, holsters, and similar accessories used by this device should not contain any metallic components. Body-worn accessories that do not meet these requirements may not comply with RF exposure requirements and should be avoided. Use only the supplied or an approved antenna.