

Measurement Report for Band 2, BACK, Cable Left, WWAN Ant, Gateway (with Sensor Docked)

Exposure Conditions

Band	Band 2	TSL Permittivity	38.3
Frequency [MHz] Channel Number	1852.4 9262	TSL Conductivity [S/m]	1.39
Group UID	WCDMA 10011-CAC	Phantom Section TSL	Flat HSL
Conversion Factor	8.18	Test Distance [mm]	0.00
Communication Configuration		UMTS-FDD (WCDMA)	

Hardware Setup

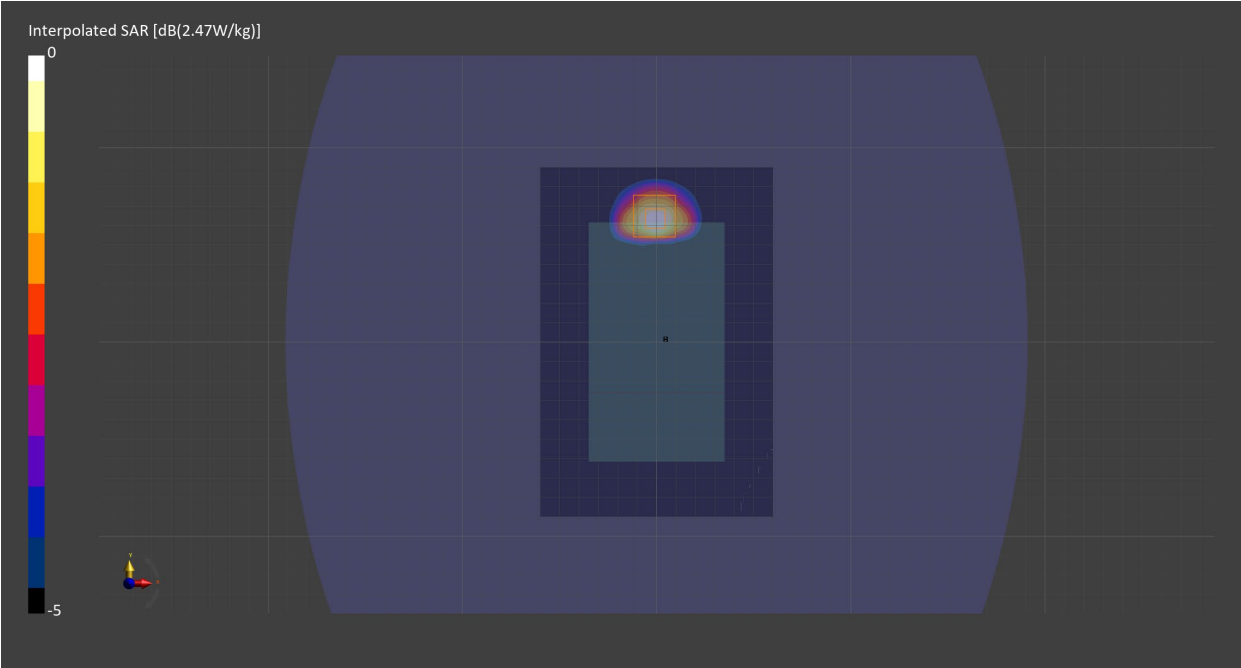
Probe Calibration Date	EX3DV4 - SN7711 2023-03-29	Phantom	ELI V8.0 (20deg probe tilt) - SN2160
DAE Calibration Date	DAE4 Sn1716 2023-03-16	TSL Meas. Date	HBBL-600-10000 2023-Aug-01

Scans Setup

	Area Scan	Zoom Scan
Grid Extents [mm]	120.0 x 180.0	30.0 x 30.0 x 30.0
Grid Steps [mm]	15.0 x 15.0	6.0 x 6.0 x 1.5
Sensor Surface [mm]	3.0	1.4
Graded Grid	n/a	Yes
M2/M1 [%]		83.6
Dist 3dB Peak [mm]		11.9

Measurement Results

	Area Scan	Zoom Scan
psSAR1g [W/Kg]	1.31	1.43
psSAR10g [W/Kg]	0.718	0.797
Power Drift [dB]	n/a	-0.04



Measurement Report for Band 4, BACK, Cable Left, WWAN Ant, Gateway (with Sensor Docked)

Exposure Conditions

Band	Band 4	TSL Permittivity	41.7
Frequency [MHz] Channel Number	1712.4 1312	TSL Conductivity [S/m]	1.39
Group UID	WCDMA 10011-CAC	Phantom Section TSL	Flat HSL
Conversion Factor	8.58	Test Distance [mm]	0.00
Communication Configuration	UMTS-FDD (WCDMA)		

Hardware Setup

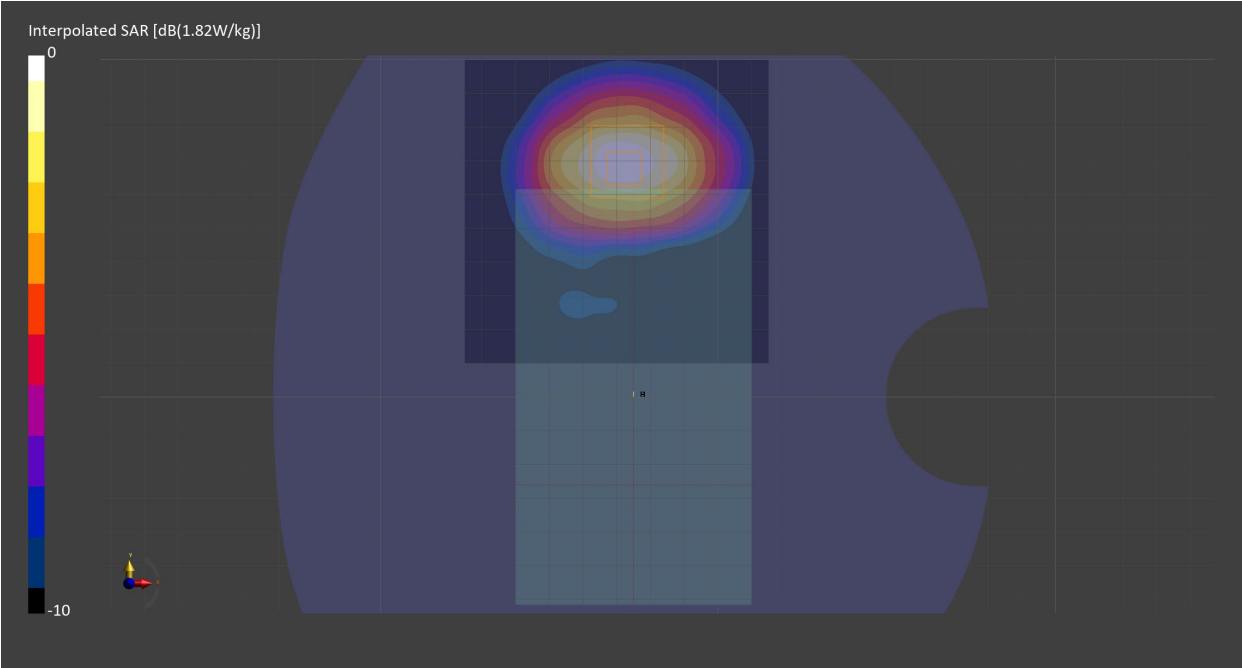
Probe Calibration Date	EX3DV4 - SN7587 2022-04-27	Phantom	Twin-SAM V8.0 (30deg probe tilt) - SN1742
DAE Calibration Date	DAE4 Sn1673 2022-09-15	TSL Meas. Date	HBBL-600-10000 2023-Mar-13

Scans Setup

	Area Scan	Zoom Scan
Grid Extents [mm]	90.0 x 90.0	30.0 x 30.0 x 30.0
Grid Steps [mm]	15.0 x 15.0	6.0 x 6.0 x 1.5
Sensor Surface [mm]	3.0	1.4
Graded Grid	n/a	Yes
M2/M1 [%]		83.7
Dist 3dB Peak [mm]		10.8

Measurement Results

	Area Scan	Zoom Scan
psSAR1g [W/Kg]	0.983	1.06
psSAR10g [W/Kg]	0.545	0.591
Power Drift [dB]	-0.06	-0.07



Measurement Report for Band 5, BACK, Cable Left, WWAN Ant, Gateway (with Sensor Docked)

Exposure Conditions

Band	Band 5	TSL Permittivity	43.6
Frequency [MHz] Channel Number	836.6 4183	TSL Conductivity [S/m]	0.906
Group UID	WCDMA 10011-CAC	Phantom Section TSL	Flat HSL
Conversion Factor	10.14	Test Distance [mm]	0.00
Communication Configuration	UMTS-FDD (WCDMA)		

Hardware Setup

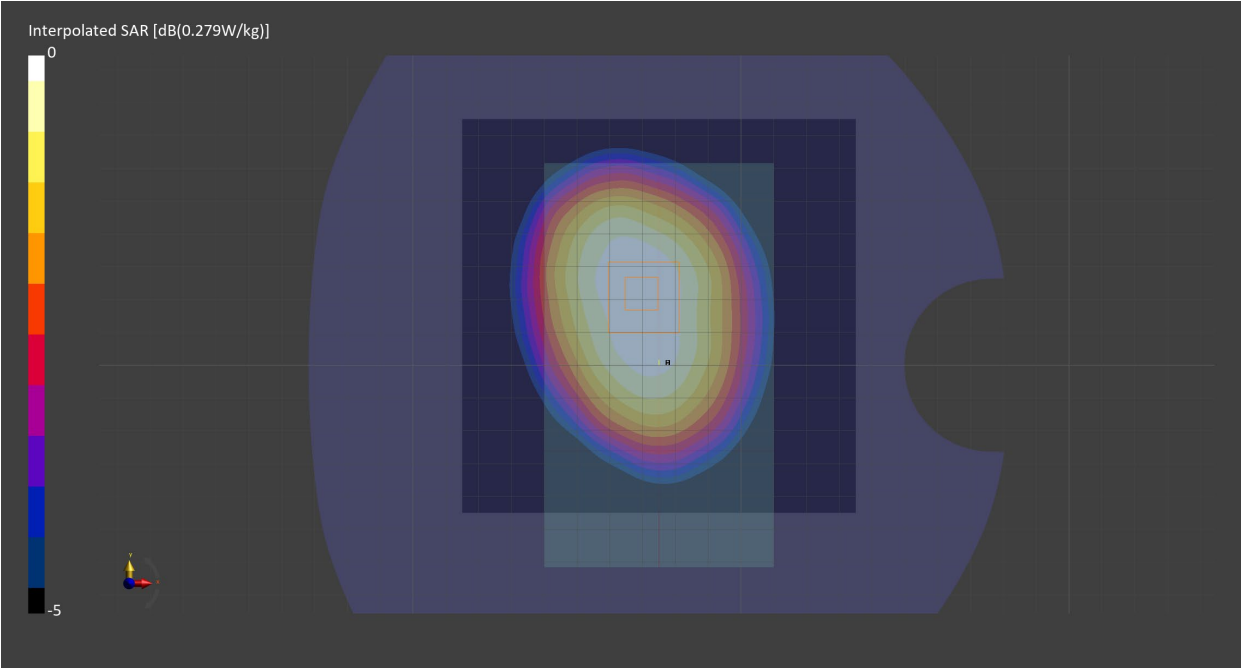
Probe Calibration Date	EX3DV4 - SN7710 2023-02-03	Phantom	Twin-SAM V8.0 (30deg probe tilt) - SN2082
DAE Calibration Date	DAE4 Sn1715 2023-01-23	TSL Meas. Date	HBBL600-10000V6 2023-Mar-13

Scans Setup

	Area Scan	Zoom Scan
Grid Extents [mm]	120.0 x 120.0	30.0 x 30.0 x 30.0
Grid Steps [mm]	15.0 x 15.0	6.0 x 6.0 x 1.5
Sensor Surface [mm]	3.0	1.4
Graded Grid	n/a	Yes
M2/M1 [%]		88.2
Dist 3dB Peak [mm]		> 15.0

Measurement Results

	Area Scan	Zoom Scan
psSAR1g [W/Kg]	0.245	0.255
psSAR10g [W/Kg]	0.172	0.188
Power Drift [dB]	0.04	0.04



Measurement Report for Band 2, BACK, Cable Right, WWAN Ant, Gateway (with Sensor Docked)

Exposure Conditions

Band	Band 2	TSL Permittivity	39.3
Frequency [MHz] Channel Number	1880.0 18900	TSL Conductivity [S/m]	1.43
Group UID	LTE-FDD 10169-CAF	Phantom Section TSL	Flat HSL
Conversion Factor	8.18	Test Distance [mm]	0.00
Communication Configuration	LTE-FDD (SC-FDMA, 1 RB, 20 MHz, QPSK) RBPosition:Mid AntennaCfg:SISO		

Hardware Setup

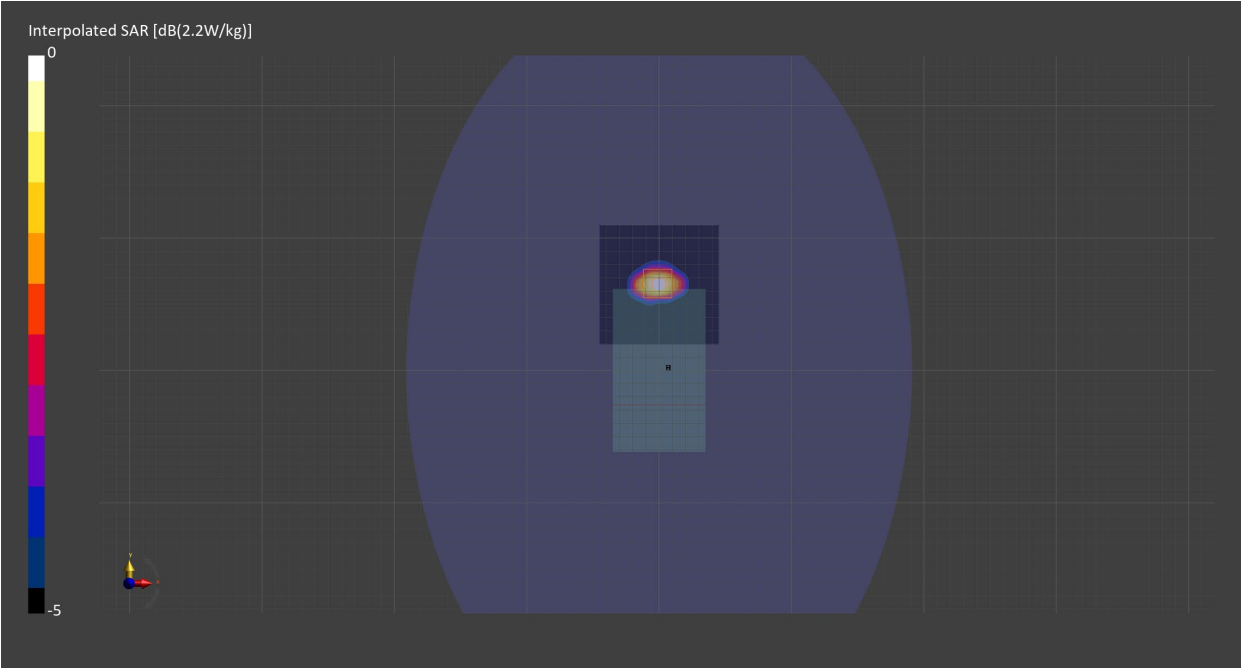
Probe Calibration Date	EX3DV4 - SN7711 2023-03-29	Phantom	ELI V8.0 (20deg probe tilt) - SN2160
DAE Calibration Date	DAE4 Sn1716 2023-03-16	TSL Meas. Date	HBBL-600-10000 2023-Aug-14

Scans Setup

	Area Scan	Zoom Scan
Grid Extents [mm]	90.0 x 90.0	30.0 x 30.0 x 30.0
Grid Steps [mm]	15.0 x 15.0	6.0 x 6.0 x 1.5
Sensor Surface [mm]	3.0	1.4
Graded Grid	n/a	Yes
M2/M1 [%]		85.1
Dist 3dB Peak [mm]		12.4

Measurement Results

	Area Scan	Zoom Scan
psSAR1g [W/Kg]	1.16	1.26
psSAR10g [W/Kg]	0.615	0.696
Power Drift [dB]	n/a	0.01



Measurement Report for Band 5, BACK, Cable Left, WWAN Ant, Gateway (with Sensor Docked)

Exposure Conditions

Band	Band 5	TSL Permittivity	43.6
Frequency [MHz] Channel Number	836.5 20525	TSL Conductivity [S/m]	0.906
Group UID	LTE-FDD 10175-CAH	Phantom Section TSL	Flat HSL
Conversion Factor	10.14	Test Distance [mm]	0.00
Communication Configuration	LTE-FDD (SC-FDMA, 1 RB, 10 MHz, QPSK) RBPosition:High AntennaCfg:SISO		

Hardware Setup

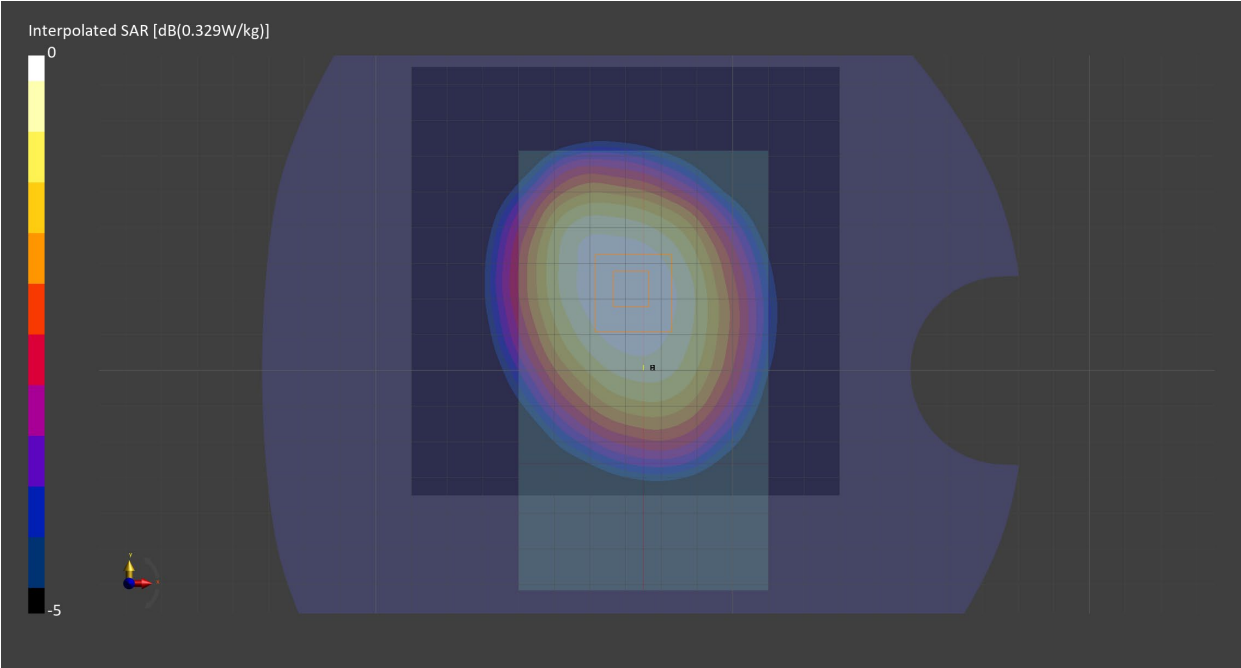
Probe Calibration Date	EX3DV4 - SN7710 2023-02-03	Phantom	Twin-SAM V8.0 (30deg probe tilt) - SN2082
DAE Calibration Date	DAE4 Sn1715 2023-01-23	TSL Meas. Date	HBBL600-10000V6 2023-Mar-13

Scans Setup

	Area Scan	Zoom Scan
Grid Extents [mm]	120.0 x 120.0	30.0 x 30.0 x 30.0
Grid Steps [mm]	15.0 x 15.0	6.0 x 6.0 x 1.5
Sensor Surface [mm]	3.0	1.4
Graded Grid	n/a	Yes
M2/M1 [%]		87.7
Dist 3dB Peak [mm]		> 15.0

Measurement Results

	Area Scan	Zoom Scan
psSAR1g [W/Kg]	0.290	0.312
psSAR10g [W/Kg]	0.204	0.229
Power Drift [dB]	-0.05	-0.13



Measurement Report for Band 12, BACK, Cable Left, WWAN Ant, Gateway (with Sensor Docked)

Exposure Conditions

Band	Band 12	TSL Permittivity	43.5
Frequency [MHz] Channel Number	707.5 23095	TSL Conductivity [S/m]	0.867
Group UID	LTE-FDD 10175-CAH	Phantom Section TSL	Flat HSL
Conversion Factor	10.56	Test Distance [mm]	0.00
Communication Configuration	LTE-FDD (SC-FDMA, 1 RB, 10 MHz, QPSK) RBPosition:Low AntennaCfg:SISO		

Hardware Setup

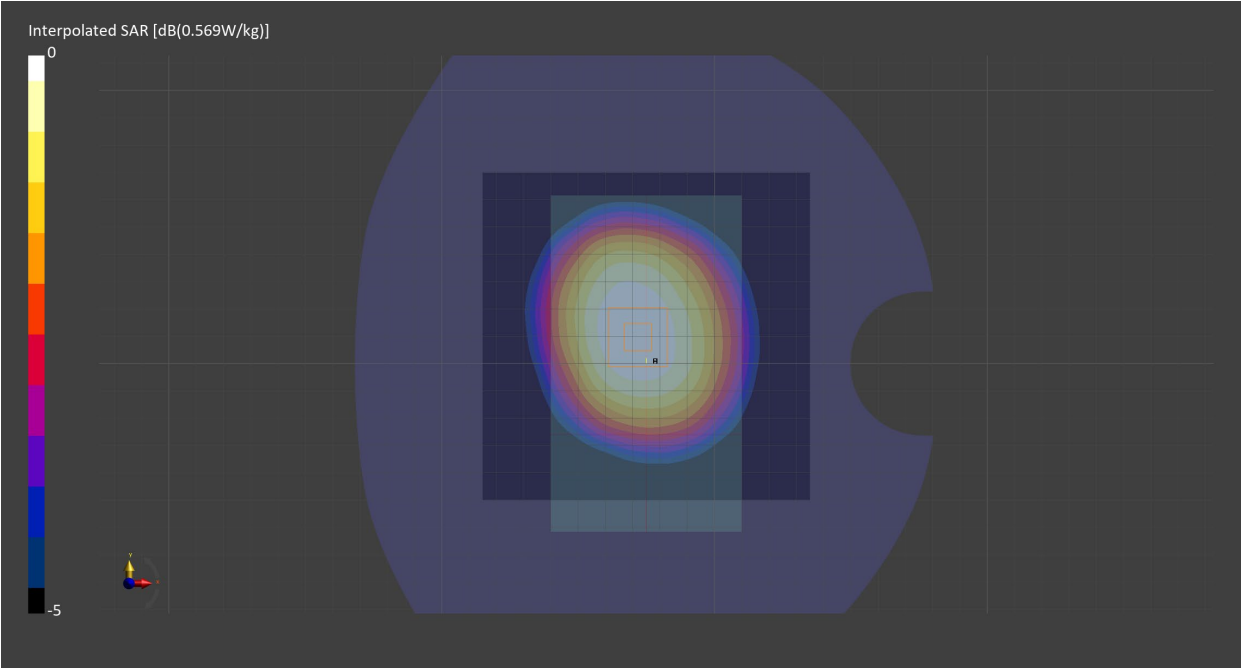
Probe Calibration Date	EX3DV4 - SN7709 2022-12-12	Phantom	Twin-SAM V8.0 (30deg probe tilt) - SN2084
DAE Calibration Date	DAE4 Sn1714 2022-11-23	TSL Meas. Date	HBBL600-10000V6 2023-Mar-14

Scans Setup

	Area Scan	Zoom Scan
Grid Extents [mm]	120.0 x 120.0	30.0 x 30.0 x 30.0
Grid Steps [mm]	15.0 x 15.0	6.0 x 6.0 x 1.5
Sensor Surface [mm]	3.0	1.4
Graded Grid	n/a	Yes
M2/M1 [%]		90.4
Dist 3dB Peak [mm]		> 15.0

Measurement Results

	Area Scan	Zoom Scan
psSAR1g [W/Kg]	0.505	0.516
psSAR10g [W/Kg]	0.360	0.386
Power Drift [dB]	0.09	-0.12



Measurement Report for Band 13, BACK, Cable Left, WWAN Ant, Gateway (with Sensor Docked)

Exposure Conditions

Band	Band 13	TSL Permittivity	42.6
Frequency [MHz] Channel Number	782.0 23230	TSL Conductivity [S/m]	0.879
Group UID	LTE-FDD 10175-CAH	Phantom Section TSL	Flat HSL
Conversion Factor	10.56	Test Distance [mm]	0.00
Communication Configuration	LTE-FDD (SC-FDMA, 1 RB, 10 MHz, QPSK) RBPosition:Mid AntennaCfg:SISO		

Hardware Setup

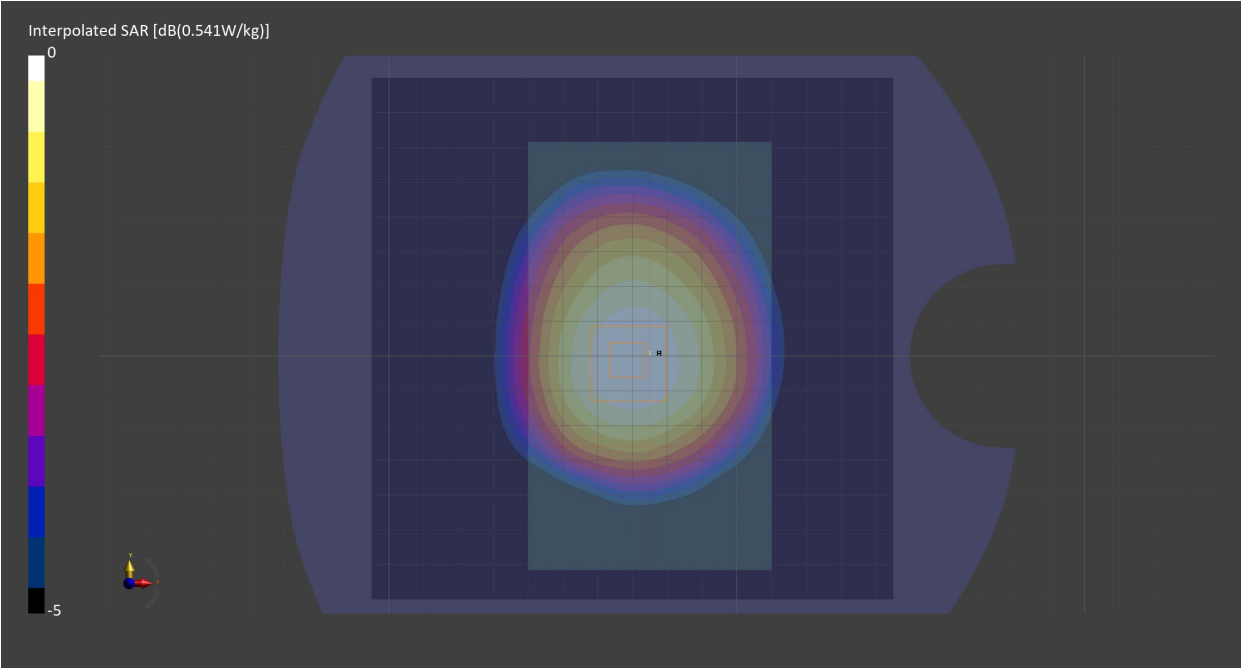
Probe Calibration Date	EX3DV4 - SN7709 2022-12-12	Phantom	Twin-SAM V8.0 (30deg probe tilt) - SN2084
DAE Calibration Date	DAE4 Sn1714 2022-11-23	TSL Meas. Date	HBBL600-10000V6 2023-Mar-17

Scans Setup

	Area Scan	Zoom Scan
Grid Extents [mm]	150.0 x 150.0	30.0 x 30.0 x 30.0
Grid Steps [mm]	15.0 x 15.0	6.0 x 6.0 x 1.5
Sensor Surface [mm]	3.0	1.4
Graded Grid	n/a	Yes
M2/M1 [%]		90.9
Dist 3dB Peak [mm]		> 15.0

Measurement Results

	Area Scan	Zoom Scan
psSAR1g [W/Kg]	0.477	0.477
psSAR10g [W/Kg]	0.335	0.354
Power Drift [dB]	-0.08	-0.02



Measurement Report for Band 14, BACK, Cable Left, WWAN Ant, Gateway (with Sensor Docked)

Exposure Conditions

Band	Band 14	TSL Permittivity	42.6
Frequency [MHz] Channel Number	793.0 23330	TSL Conductivity [S/m]	0.882
Group UID	LTE-FDD 10175-CAH	Phantom Section TSL	Flat HSL
Conversion Factor	10.56	Test Distance [mm]	0.00
Communication Configuration	LTE-FDD (SC-FDMA, 1 RB, 10 MHz, QPSK) RBPosition:High AntennaCfg:SISO		

Hardware Setup

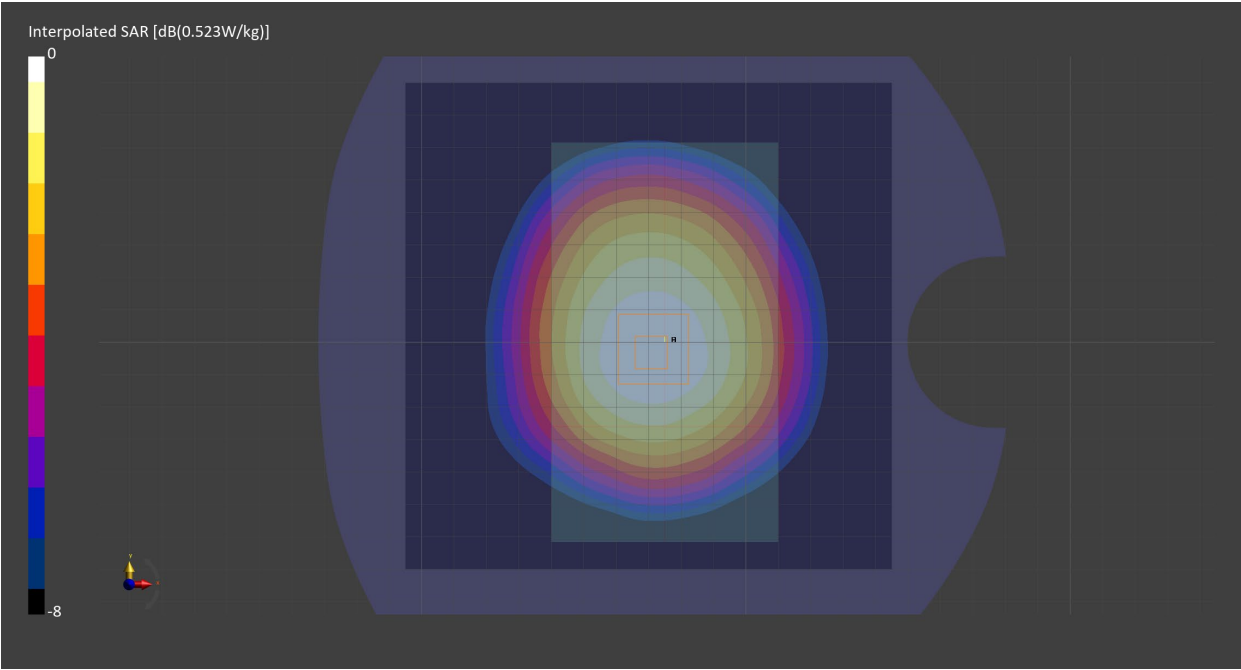
Probe Calibration Date	EX3DV4 - SN7709 2022-12-12	Phantom	Twin-SAM V8.0 (30deg probe tilt) - SN2084
DAE Calibration Date	DAE4 Sn1714 2022-11-23	TSL Meas. Date	HBBL600-10000V6 2023-Mar-17

Scans Setup

	Area Scan	Zoom Scan
Grid Extents [mm]	150.0 x 150.0	30.0 x 30.0 x 30.0
Grid Steps [mm]	15.0 x 15.0	6.0 x 6.0 x 1.5
Sensor Surface [mm]	3.0	1.4
Graded Grid	n/a	Yes
M2/M1 [%]		90.1
Dist 3dB Peak [mm]		> 15.0

Measurement Results

	Area Scan	Zoom Scan
psSAR1g [W/Kg]	0.461	0.473
psSAR10g [W/Kg]	0.323	0.352
Power Drift [dB]	0.13	0.01



Measurement Report for Band 66, BACK, Cable Left, WWAN Ant, Gateway (with Sensor Docked)

Exposure Conditions

Band	Band 66	TSL Permittivity	38.4
Frequency [MHz] Channel Number	1770.0 132572	TSL Conductivity [S/m]	1.34
Group UID	LTE-FDD 10169-CAF	Phantom Section TSL	Flat HSL
Conversion Factor	8.64	Test Distance [mm]	0.00
Communication Configuration	LTE-FDD (SC-FDMA, 1 RB, 20 MHz, QPSK) RBPosition:Low AntennaCfg:SISO		

Hardware Setup

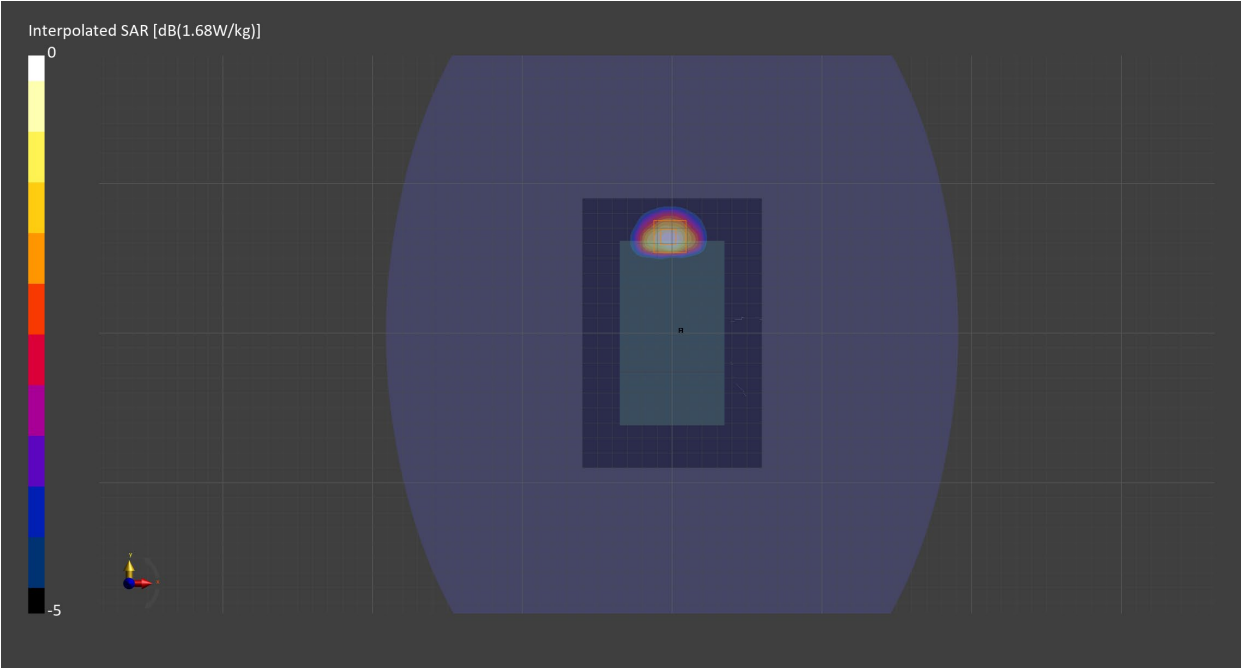
Probe Calibration Date	EX3DV4 - SN7711 2023-03-29	Phantom	ELI V8.0 (20deg probe tilt) - SN2160
DAE Calibration Date	DAE4 Sn1716 2023-03-16	TSL Meas. Date	HBBL-600-10000 2023-Aug-01

Scans Setup

	Area Scan	Zoom Scan
Grid Extents [mm]	120.0 x 180.0	30.0 x 30.0 x 30.0
Grid Steps [mm]	15.0 x 15.0	6.0 x 6.0 x 1.5
Sensor Surface [mm]	3.0	1.4
Graded Grid	n/a	Yes
M2/M1 [%]		83.9
Dist 3dB Peak [mm]		12.0

Measurement Results

	Area Scan	Zoom Scan
psSAR1g [W/Kg]	1.07	1.03
psSAR10g [W/Kg]	0.592	0.584
Power Drift [dB]	n/a	-0.19



Measurement Report for Band 71, BACK, Cable Left, WWAN Ant, Gateway (with Sensor Docked)

Exposure Conditions

Band	Band 71	TSL Permittivity	42.9
Frequency [MHz] Channel Number	680.5 133297	TSL Conductivity [S/m]	0.845
Group UID	LTE-FDD 10169-CAF	Phantom Section TSL	Flat HSL
Conversion Factor	10.56	Test Distance [mm]	0.00
Communication Configuration	LTE-FDD (SC-FDMA, 1 RB, 20 MHz, QPSK) RBPosition:Mid AntennaCfg:SISO		

Hardware Setup

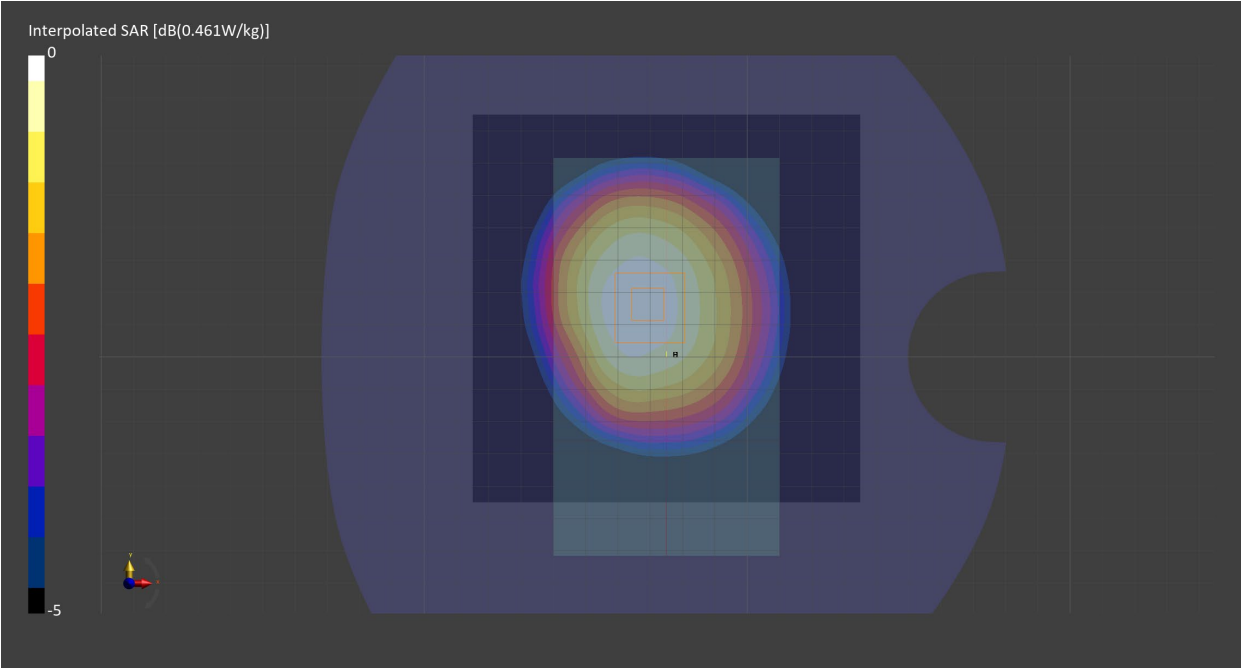
Probe Calibration Date	EX3DV4 - SN7709 2022-12-12	Phantom	Twin-SAM V8.0 (30deg probe tilt) - SN2084
DAE Calibration Date	DAE4 Sn1714 2022-11-23	TSL Meas. Date	HBBL600-10000V6 2023-Mar-17

Scans Setup

	Area Scan	Zoom Scan
Grid Extents [mm]	120.0 x 120.0	30.0 x 30.0 x 30.0
Grid Steps [mm]	15.0 x 15.0	6.0 x 6.0 x 1.5
Sensor Surface [mm]	3.0	1.4
Graded Grid	n/a	Yes
M2/M1 [%]		90.0
Dist 3dB Peak [mm]		> 15.0

Measurement Results

	Area Scan	Zoom Scan
psSAR1g [W/Kg]	0.406	0.419
psSAR10g [W/Kg]	0.287	0.314
Power Drift [dB]	-0.04	0.10



Measurement Report for ISM 2.4 GHz Band, BACK, Cable Left, BT Ant, Gateway
(with the Sensor Docked)

Exposure Conditions

Band	ISM 2.4 GHz Band	TSL Permittivity	37.5
Frequency [MHz] Channel Number	2402.0 0	TSL Conductivity [S/m]	1.72
Group UID	Bluetooth 10670-AAA	Phantom Section TSL	Flat HSL
Conversion Factor	8.6	Test Distance [mm]	0.00
Communication Configuration		Bluetooth Low Energy	

Hardware Setup

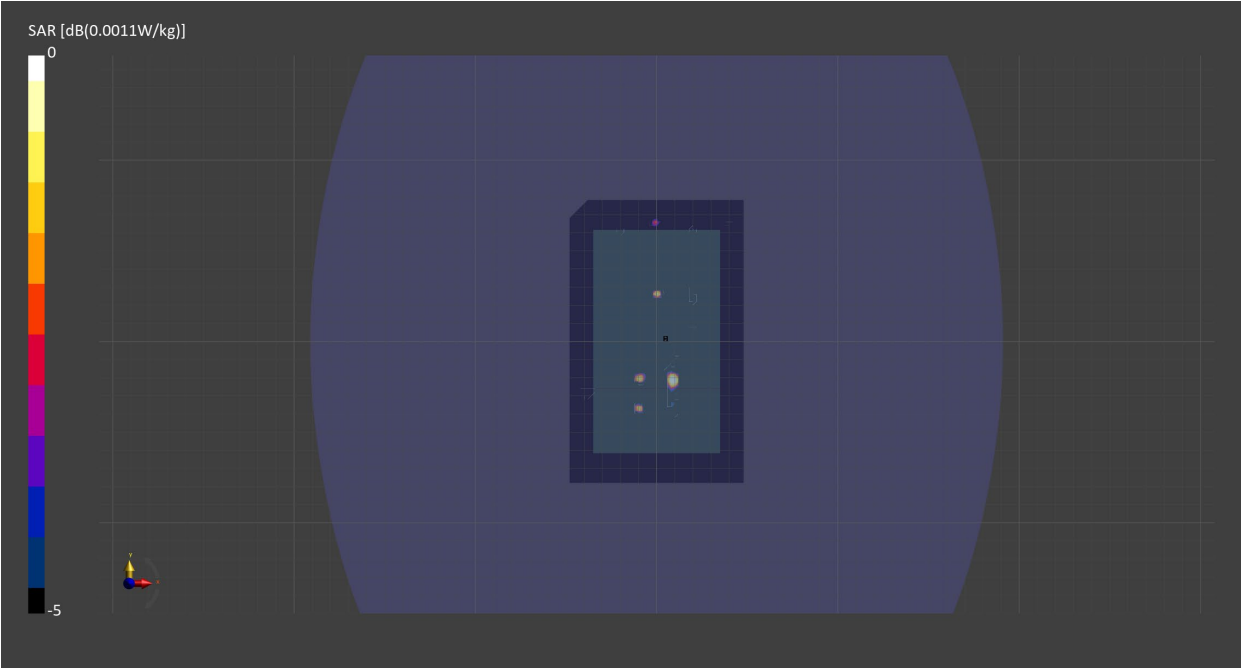
Probe Calibration Date	EX3DV4 - SN7709 2022-12-12	Phantom	ELI V8.0 (20deg probe tilt) - SN2160
DAE Calibration Date	DAE4 Sn1714 2022-11-23	TSL Meas. Date	HBBL-600-10000 2023-Aug-22

Scans Setup

	Area Scan	Zoom Scan
Grid Extents [mm]	100.0 x 160.0	30.0 x 30.0 x 30.0
Grid Steps [mm]	10.0 x 10.0	0.7 x 0.7 x 1.2
Sensor Surface [mm]	3.0	1.4
Graded Grid	n/a	Yes
M2/M1 [%]		n/a
Dist 3dB Peak [mm]		n/a

Measurement Results

	Area Scan	Zoom Scan
psSAR1g [W/Kg]	0	0
psSAR10g [W/Kg]	0	0
Power Drift [dB]	n/a	n/a



Measurement Report for ISM 2.4 GHz Band, BACK, Cable Left, Main Ant, Sensor Docked in Gateway

Exposure Conditions

Band	ISM 2.4 GHz Band	TSL Permittivity	37.5
Frequency [MHz] Channel Number	2402.0 0	TSL Conductivity [S/m]	1.72
Group UID	Bluetooth 10670-AAA	Phantom Section TSL	Flat HSL
Conversion Factor	8.6	Test Distance [mm]	0.00
Communication Configuration		Bluetooth Low Energy	

Hardware Setup

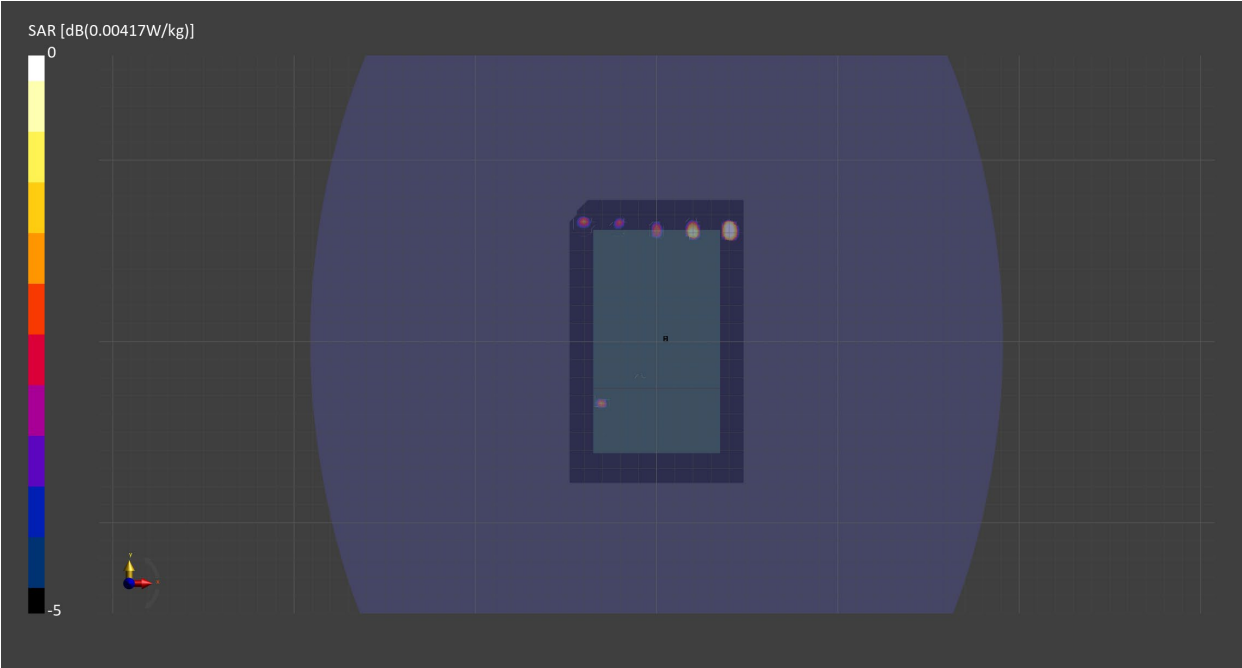
Probe Calibration Date	EX3DV4 - SN7709 2022-12-12	Phantom	ELI V8.0 (20deg probe tilt) - SN2160
DAE Calibration Date	DAE4 Sn1714 2022-11-23	TSL Meas. Date	HBBL-600-10000 2023-Aug-22

Scans Setup

	Area Scan	Zoom Scan
Grid Extents [mm]	100.0 x 160.0	30.0 x 30.0 x 30.0
Grid Steps [mm]	10.0 x 10.0	5.0 x 5.0 x 1.5
Sensor Surface [mm]	3.0	1.4
Graded Grid	n/a	Yes
M2/M1 [%]		n/a
Dist 3dB Peak [mm]		0.0

Measurement Results

	Area Scan	Zoom Scan
psSAR1g [W/Kg]	0	0
psSAR10g [W/Kg]	0	0
Power Drift [dB]	n/a	4.17



Measurement Report for ISM 2.4 GHz Band, FRONT, Main Ant, Sensor Standalone

Exposure Conditions

Band	ISM 2.4 GHz Band	TSL Permittivity	37.5
Frequency [MHz] Channel Number	2402.0 0	TSL Conductivity [S/m]	1.72
Group UID	Bluetooth 10670-AAA	Phantom Section TSL	Flat HSL
Conversion Factor	8.6	Test Distance [mm]	0.00
Communication Configuration	Bluetooth Low Energy		

Hardware Setup

Probe Calibration Date	EX3DV4 - SN7709 2022-12-12	Phantom	ELI V8.0 (20deg probe tilt) - SN2160
DAE Calibration Date	DAE4 Sn1714 2022-11-23	TSL Meas. Date	HBBL-600-10000 2023-Aug-22

Scans Setup

	Area Scan	Zoom Scan
Grid Extents [mm]	80.0 x 120.0	30.0 x 30.0 x 30.0
Grid Steps [mm]	10.0 x 10.0	5.0 x 5.0 x 1.5
Sensor Surface [mm]	3.0	1.4
Graded Grid	n/a	Yes
M2/M1 [%]		65.1
Dist 3dB Peak [mm]		6.8

Measurement Results

	Area Scan	Zoom Scan
psSAR1g [W/Kg]	0.017	0.018
psSAR10g [W/Kg]	0.008	0.007
Power Drift [dB]	n/a	-0.06

