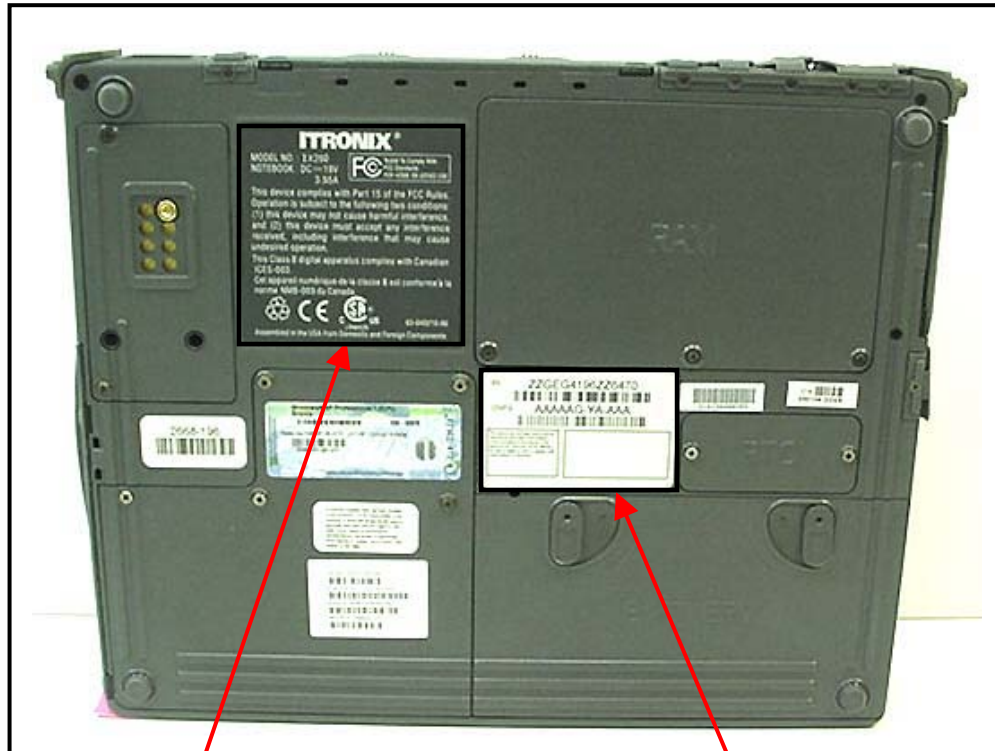


## FCC ID LABEL & LOCATION

### LABELING REQUIREMENTS PER §2.925

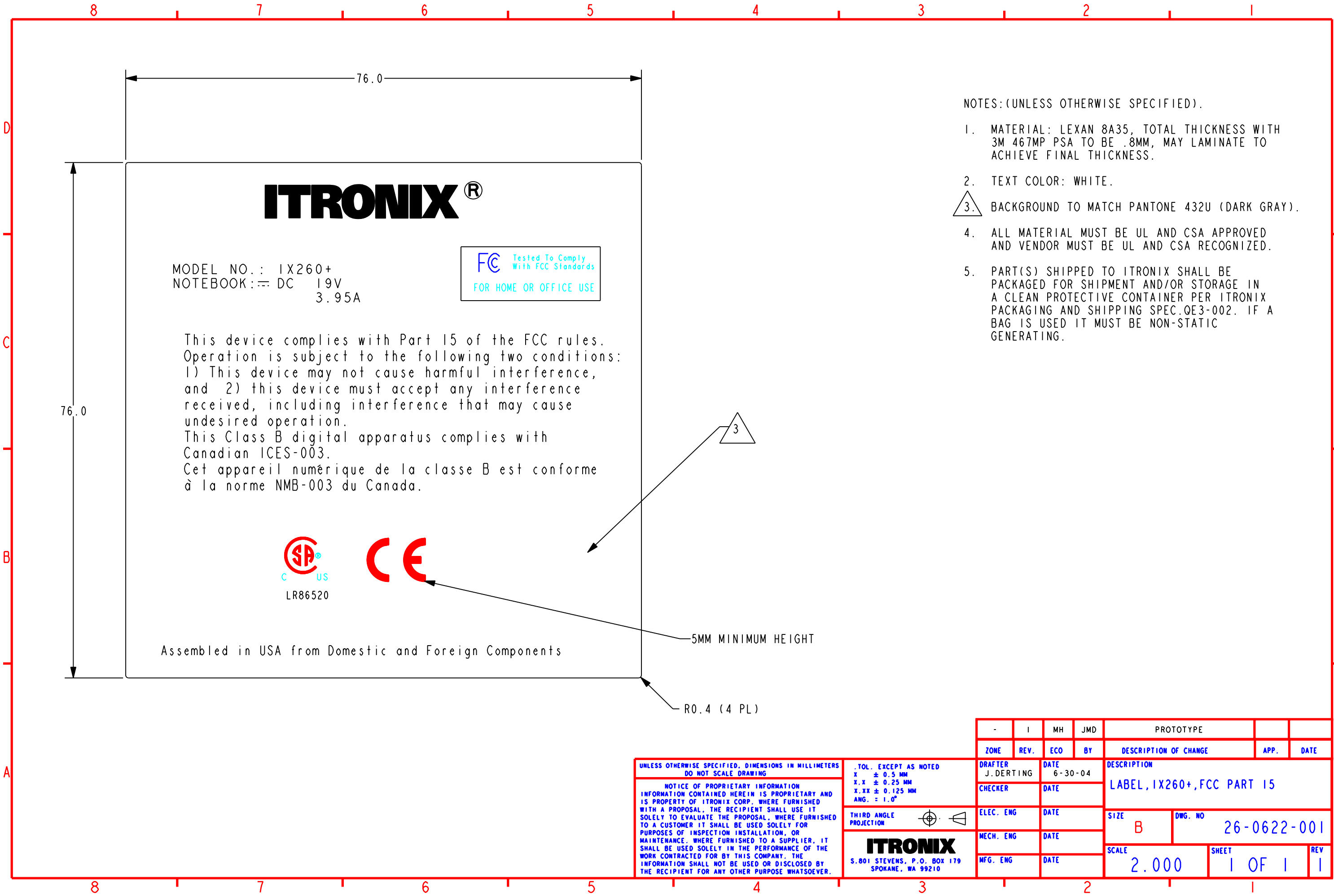
The label(s) shall be permanently affixed at a conspicuous location on the device.



SEE NEXT PAGE(S) FOR  
PART 15(B) DoC LABEL

SEE NEXT PAGE(S)  
FOR FCC ID LABEL





NOTES: (UNLESS OTHERWISE SPECIFIED).

1. MATERIAL: LEXAN 8A35, TOTAL THICKNESS WITH 3M 467MP PSA TO BE .8MM, MAY LAMINATE TO ACHIEVE FINAL THICKNESS.
2. TEXT COLOR: WHITE.
3. BACKGROUND TO MATCH PANTONE 432U (DARK GRAY).
4. ALL MATERIAL MUST BE UL AND CSA APPROVED AND VENDOR MUST BE UL AND CSA RECOGNIZED.
5. PART(S) SHIPPED TO ITRONIX SHALL BE PACKAGED FOR SHIPMENT AND/OR STORAGE IN A CLEAN PROTECTIVE CONTAINER PER ITRONIX PACKAGING AND SHIPPING SPEC.QE3-002. IF A BAG IS USED IT MUST BE NON-STATIC GENERATING.

UNLESS OTHERWISE SPECIFIED, DIMENSIONS IN MILLIMETERS  
DO NOT SCALE DRAWING

NOTICE OF PROPRIETARY INFORMATION  
INFORMATION CONTAINED HEREIN IS PROPRIETARY AND  
IS PROPERTY OF ITRONIX CORP. WHERE FURNISHED  
WITH A PROPOSAL, THE RECIPIENT SHALL USE IT  
SOLELY TO EVALUATE THE PROPOSAL, WHERE FURNISHED  
TO A CUSTOMER IT SHALL BE USED SOLELY FOR  
PURPOSES OF INSPECTION INSTALLATION, OR  
MAINTENANCE. WHERE FURNISHED TO A SUPPLIER, IT  
SHALL BE USED SOLELY IN THE PERFORMANCE OF THE  
WORK CONTRACTED FOR BY THIS COMPANY. THE  
INFORMATION SHALL NOT BE USED OR DISCLOSED BY  
THE RECIPIENT FOR ANY OTHER PURPOSE WHATSOEVER.

TOL. EXCEPT AS NOTED  
X ± 0.5 MM  
X.X ± 0.25 MM  
X.XX ± 0.125 MM  
ANG. = 1.0°

THIRD ANGLE  
PROJECTION

**ITRONIX**  
S.801 STEVENS, P.O. BOX 179  
SPOKANE, WA 99210

-	I	MH	JMD	PROTOTYPE			
ZONE	REV.	ECO	BY	DESCRIPTION OF CHANGE		APP.	DATE
DRAFTER J. DERTING	DATE 6-30-04			DESCRIPTION LABEL, IX260+, FCC PART 15			
CHECKER	DATE						
ELEC. ENG	DATE			SIZE B	DWG. NO 26-0622-001		
MECH. ENG	DATE			SCALE 2.000		SHEET 1 OF 1	REV 1
MFG. ENG	DATE						