

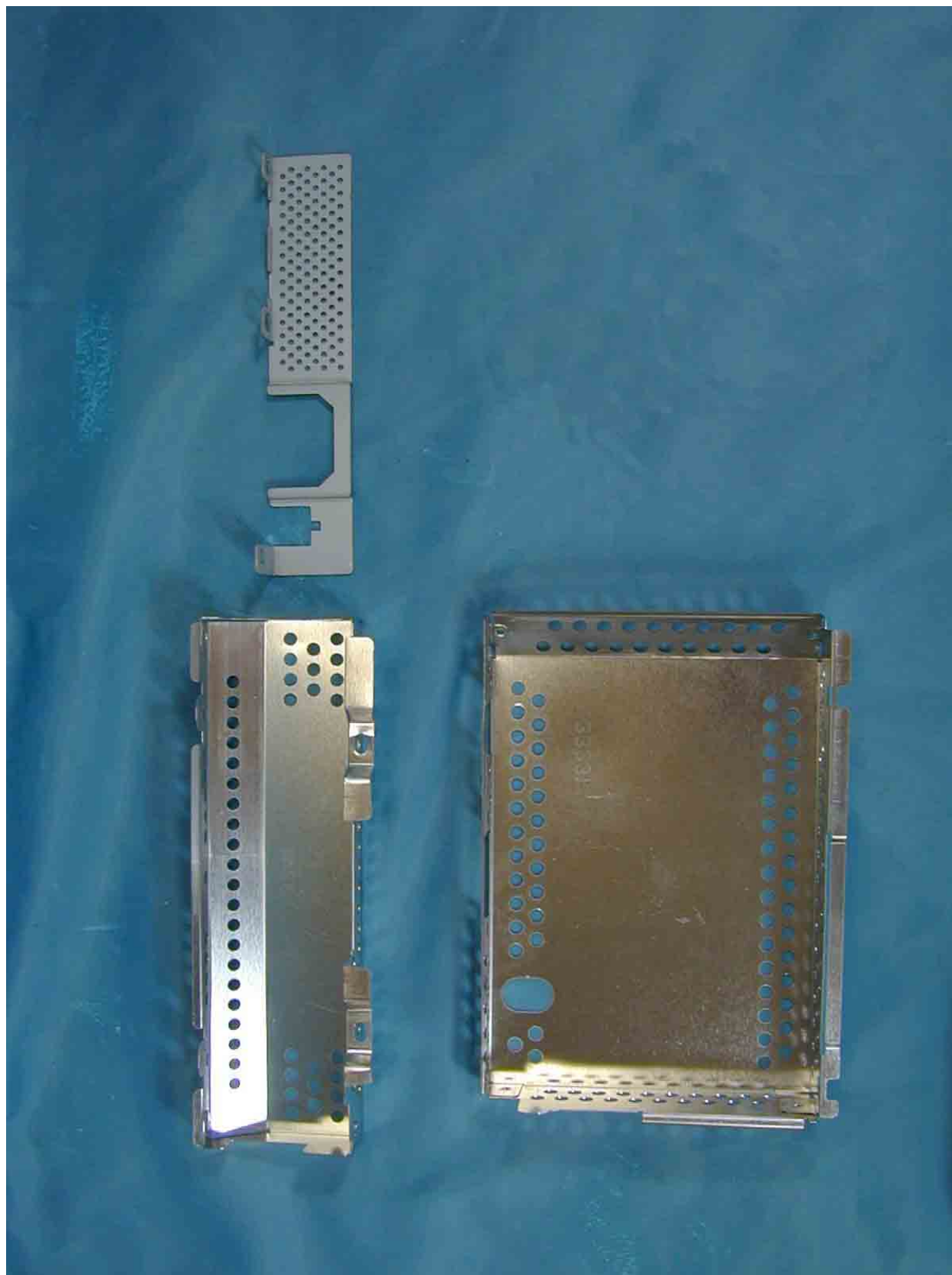
Assembly w/o Front Cabinet



Assembly w/o Back Cover



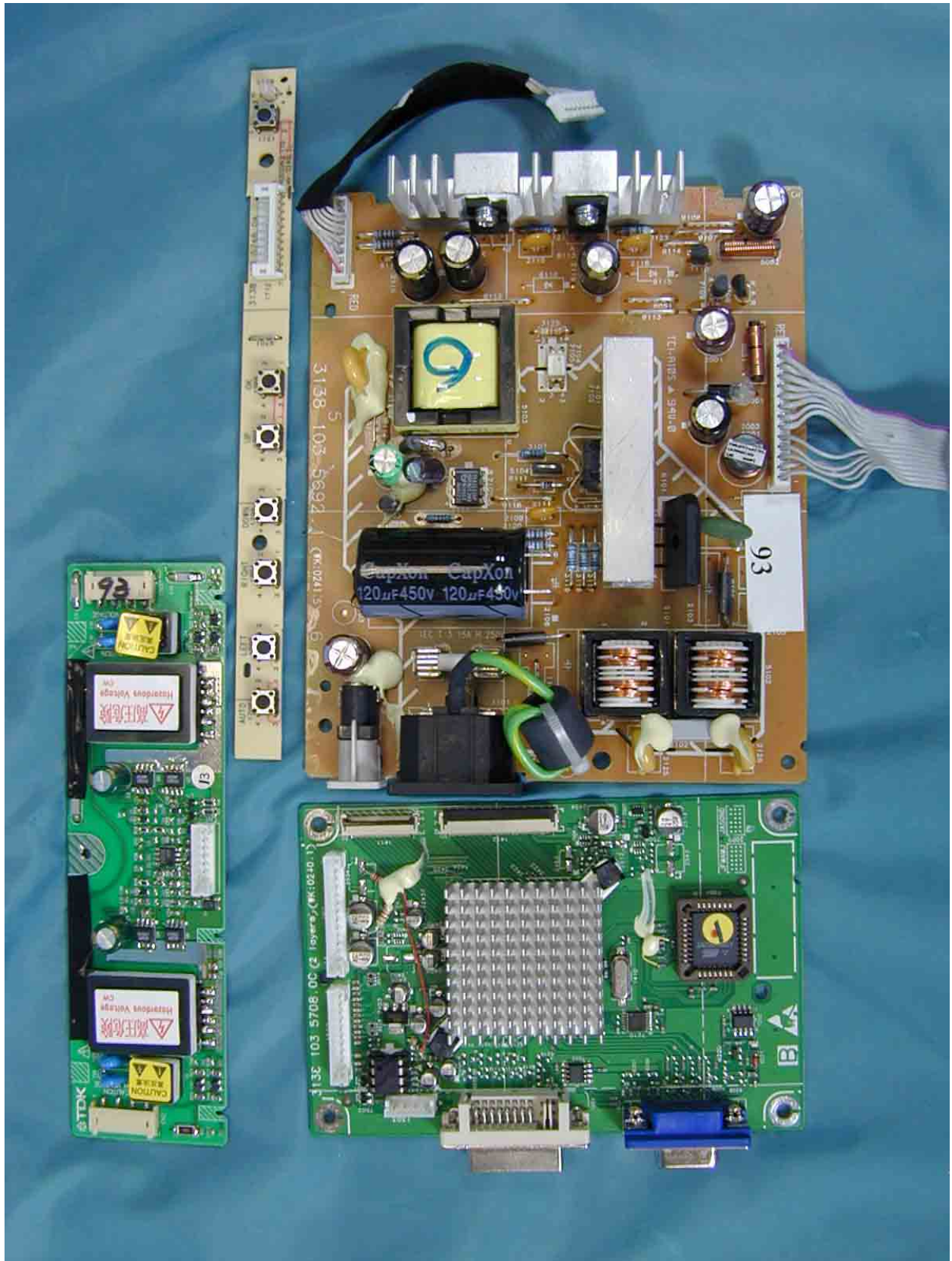
## Shielding Cover



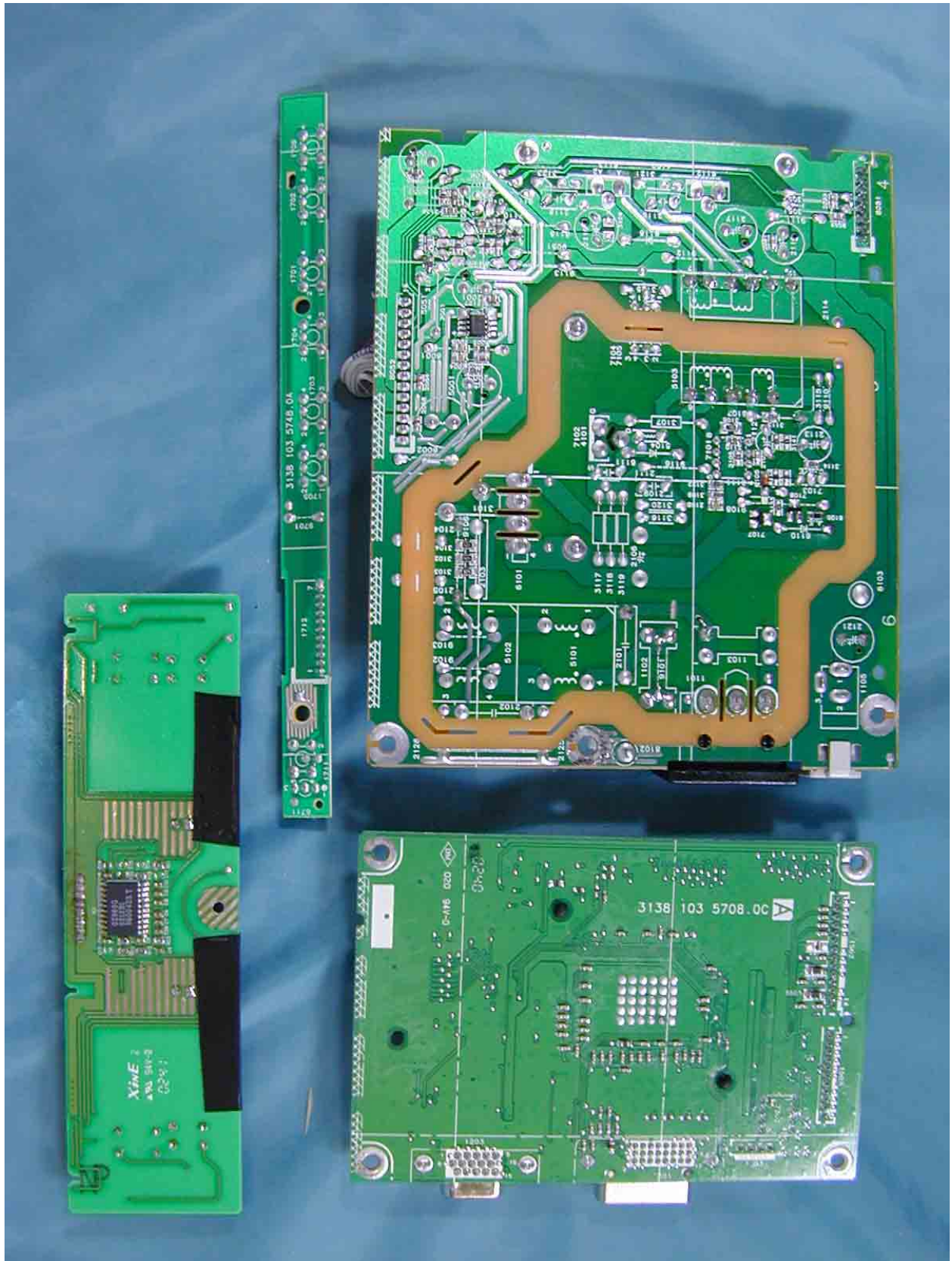
Assembly w/o Shielding Cover



## PCB Layout



## PCB Layout



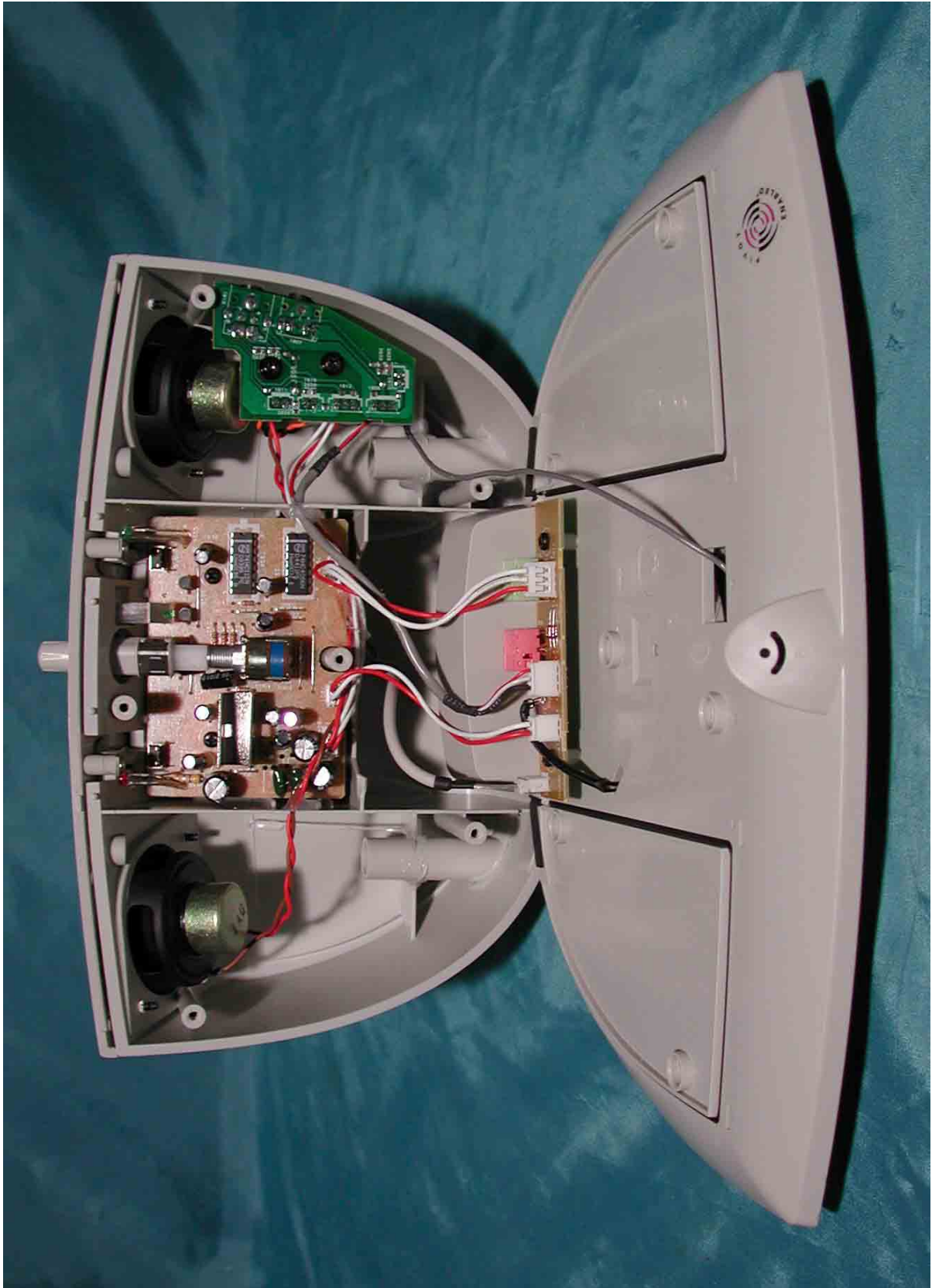
Plate



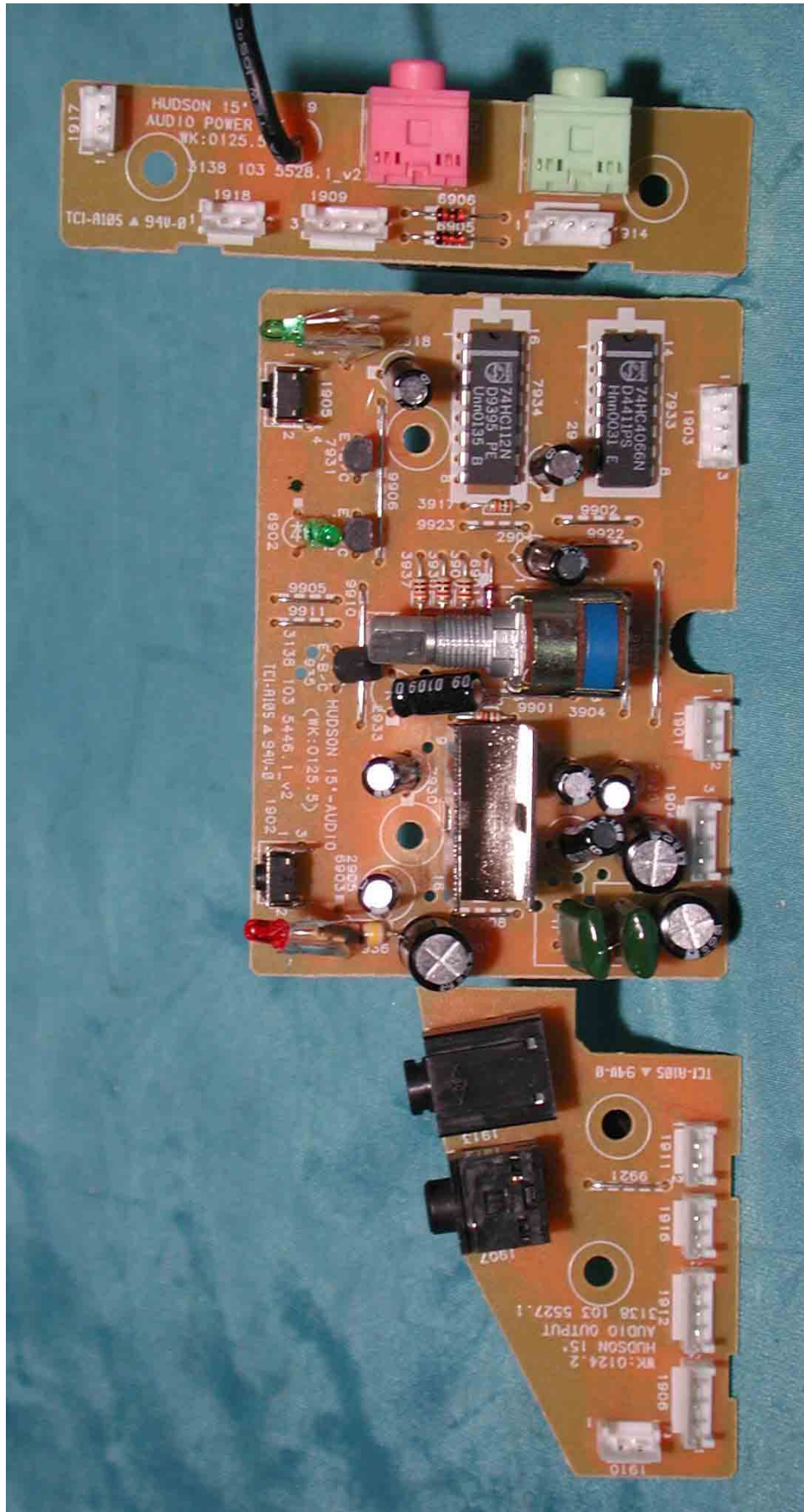
LCD Panel



Audio Base assembly

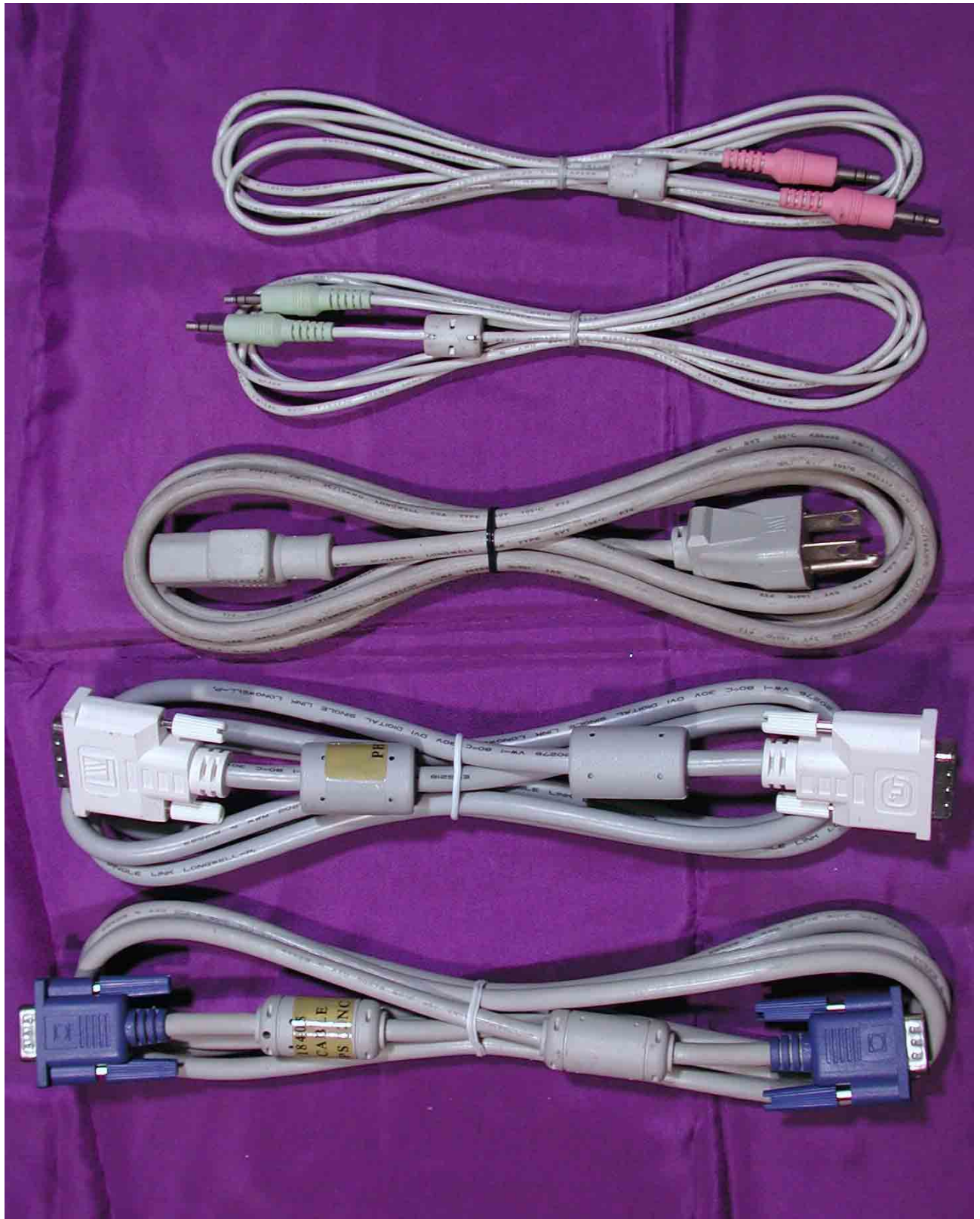


## PCB Layout



[illegible]

## Power Cord and I/F Cables



Front View



Rear View



DC 12V OUT  
for Philips Multimedia  
Device only

AC IN

**PHILIPS**

MODEL NO./型號: 170S4

電源: 100-240V ~ 60-50Hz 1.2-0.6 A  
**MADE IN TAIWAN FAIT À TAIWAN 台灣製造**

FCC ID: A3KM118  
Philips Elec. Industries Ltd.  
台灣聲利浦電子工業股份有限公司

Model ID.: 170S4FG/00C  
Manufactured/製造日期: January 2003  
5 Tze Chiang 1 Road., Chungli Industrial Park,  
P.O. Box 123 Chungli, Taoyuan, Taiwan  
台灣省桃園縣中壢工業區自強一路五號

This device complies with part 15 of the FCC Rules.  
Operation is subject to the following two conditions:  
(1) This device may not cause harmful interference, and  
(2) This device must accept any interference received,  
including interference that may cause undesired operation.

As an ENERGY STAR® Partner, Philips has determined that this product meets the ENERGY STAR® guidelines for energy efficiency.

注意: 本顯示器內有高壓, 非專業人員, 請勿自行打開後殼以免危險!

Apparatet må kun tilkoples jordnet stikkontakt.  
Apparatet skall anslutas till jordat uttag när den ansluts till  
ett nätverk. Laita on liitettävä suojakosketinpiistorasiaan.  
This class B digital apparatus complies with Canadian ICES-003  
Cet appareil numérique de la classe B est conforme à la norme  
NMB-003 du Canada

**WARNING:**

- A) This apparatus must be earthed.
  - B) Live parts are made accessible when backcover is removed.
  - C) Always remove mains plug from wall socket before any service operations. Never remove covers unless qualified to do so.
- This unit contains dangerous voltages.



Front view w/o Front Cabinet



Rear View w/o Base



Rear View w/o Back Cover



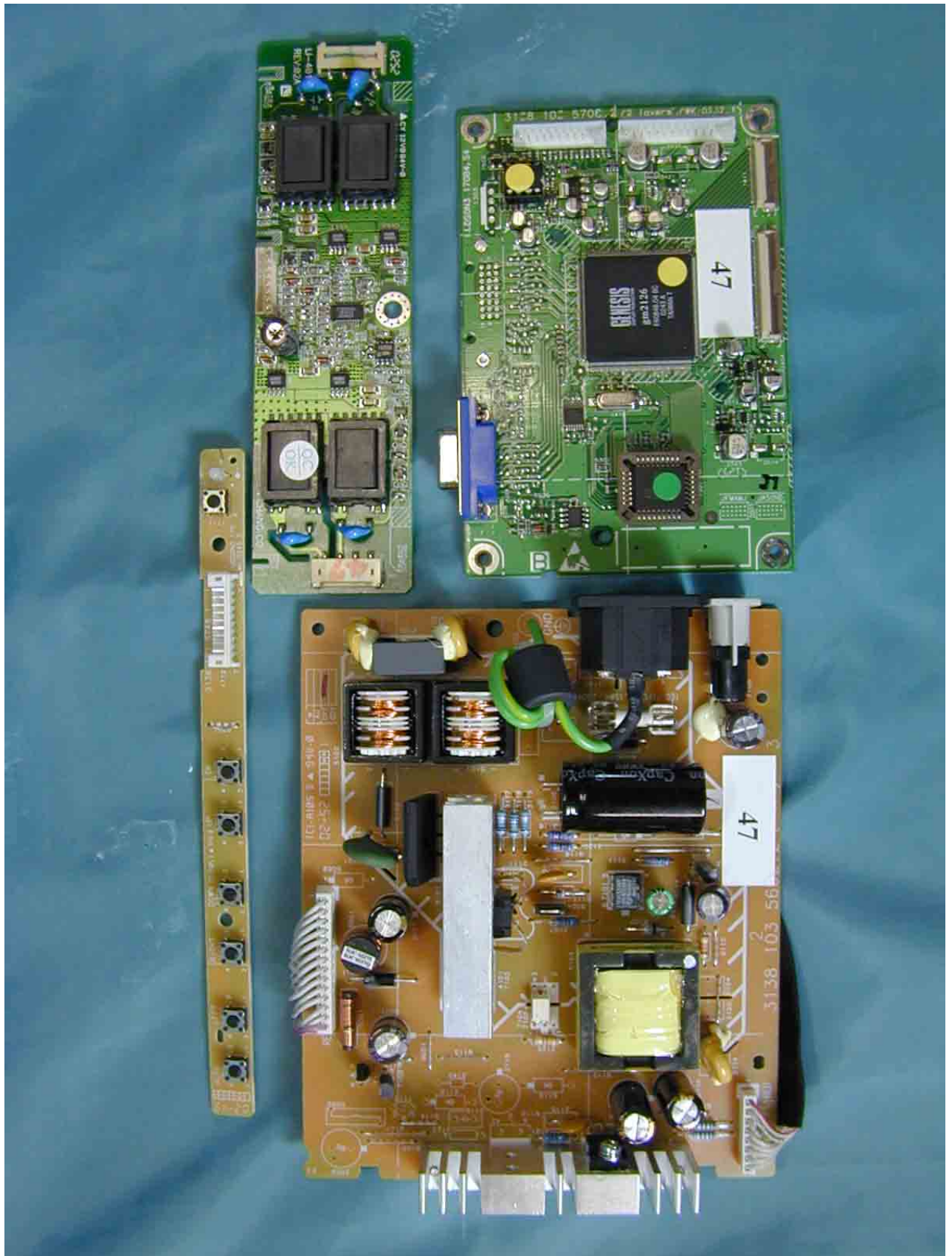
Shielding Cover



Assembly w/o Shielding Cover



## PCB Layout



## PCB Layout



Assembly w/o PCB



Plate



LCD Panel



## Power Cord and I/F Cables

