

User Manual

v0.1

Class 1 Bluetooth v2.0 EDR USB Adapter

Federal Communication Commission Interference Statement

This equipment has been tested and found to comply with the limits for a Class B digital device, pursuant to Part 15 of the FCC Rules. These limits are designed to provide reasonable protection against harmful interference in a residential installation. This equipment generates, uses and can radiate radio frequency energy and, if not installed and used in accordance with the instructions, may cause harmful interference to radio communications. However, there is no guarantee that interference will not occur in a particular installation. If this equipment does cause harmful interference to radio or television reception, which can be determined by turning the equipment off and on, the user is encouraged to try to correct the interference by one of the following measures:

- Reorient or relocate the receiving antenna.
- Increase the separation between the equipment and receiver.
- Connect the equipment into an outlet on a circuit different from that to which the receiver is connected.
- Consult the dealer or an experienced radio/TV technician for help.

FCC Caution: Any changes or modifications not expressly approved by the party responsible for compliance could void the user's authority to operate this equipment.

This device complies with Part 15 of the FCC Rules. Operation is subject to the following two conditions: (1) This device may not cause harmful interference, and (2) this device must accept any interference received, including interference that may cause undesired operation.

IMPORTANT NOTE:

FCC Radiation Exposure Statement:

This equipment complies with FCC radiation exposure limits set forth for an uncontrolled environment. This device complies with FCC RF Exposure limits set forth for an uncontrolled environment, under 47 CFR 2.1093 paragraph (d)(2).

This transmitter must not be co-located or operating in conjunction with any other antenna or transmitter.

This equipment has been SAR-evaluated for use in laptops (notebooks) with side slot configuration.

The maximum SAR value is 1.38W/kg.

Getting Started..... 4

 Minimum System Requirements 4

 Unpacking and Checking the Contents..... 4

 Identifying Components 4

 Software Installation 4

Toshiba Bluetooth Utility Contents 6

 Bluetooth Functions 6

 Bluetooth Utility Contents..... 7

Appendix 10

 Troubleshooting 10

Getting Started

Minimum System Requirements

- PC running Windows 98/ME/ 2000/XP
- At least 400 MHz processor, MAC OS X 10.2.6 or the later versions
- At least 128 MB RAM
- At least 50MB free disk space on your hard drive

Unpacking and Checking the Contents

Packing content

- BUB-211 Class Bluetooth v2.0 EDR USB Adapter
- Quick Guide
- CD (with software, driver, utility and user guide)

Identifying Components

BUB-211

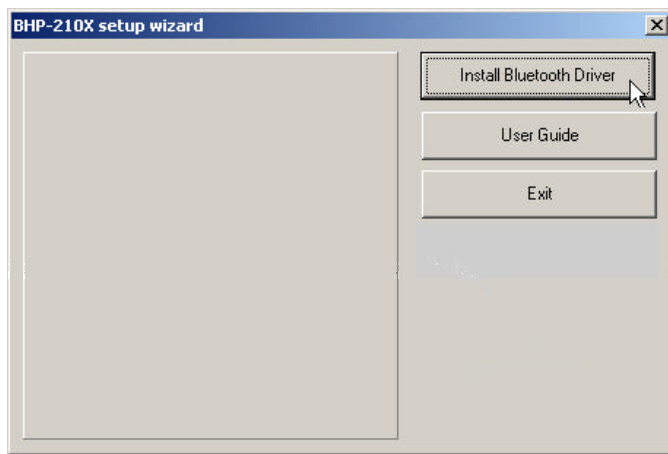


Software Installation

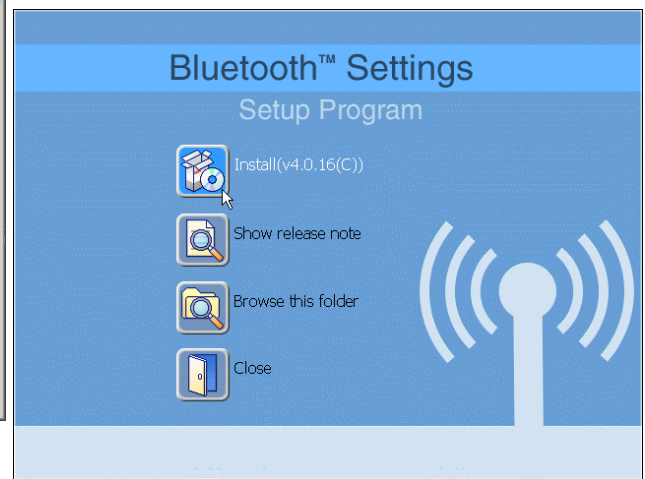
1. Turn on your PC
2. Please insert the Utility CD into CD-ROM drive, and then follow the instruction below to install Bluetooth software.

Note: DO NOT plug the USB Adapter into the USB port before software installation

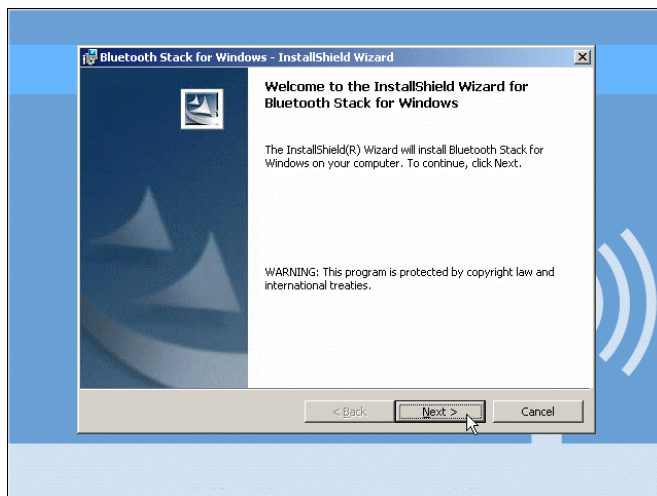
3. Follow the directions on your screen to install Adapter driver.



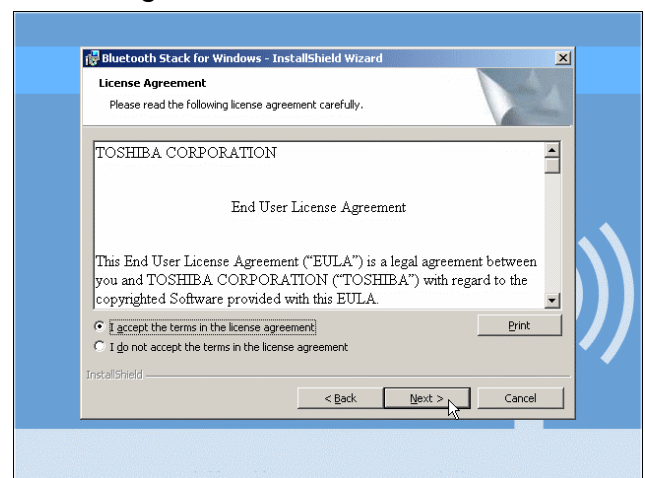
2. Please Click "Install".



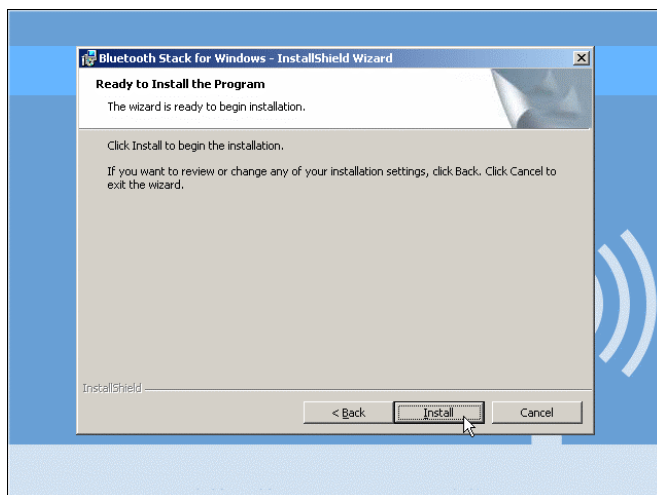
3. Please Click "Next".



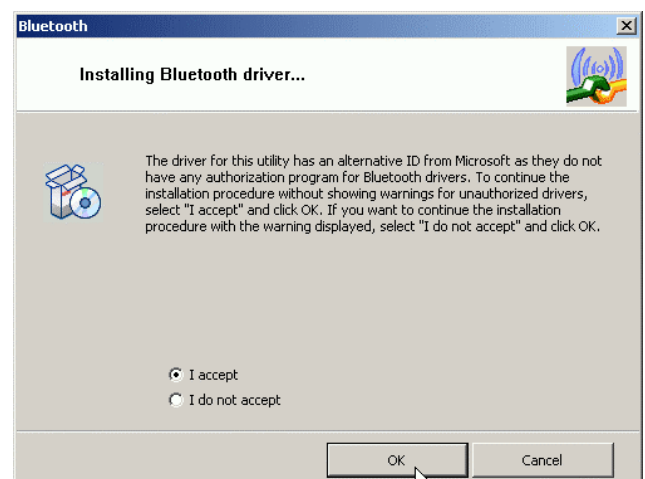
4. Please choose "I accept the terms in the license agreement" and then click "Next".



5. Please Click "Install".



6. Please Choose "I accept" and then click "OK"



7. Installation will ask you plug Bluetooth Device into USB port, please plug BUB-211 into USB port then click "OK".



8. Please Click "Finish" to complete the installation wizard.



Toshiba Bluetooth Utility Contents

Bluetooth Functions

Toshiba Bluetooth stack supports the following Bluetooth functions (profiles)

Term	Definition
DUN	Dial-Up Networking Enables you to establish a dial-up Bluetooth™ wireless technology connection to the Internet or other networks with a wireless modem station, mobile telephone, or similar device.
FAX	FAX Enables you to establish a Bluetooth™ wireless technology connection with a wireless modem station, mobile telephone, or similar device to send or receive a fax.
LAP	LAN Access Profile Enables you to establish a Bluetooth™ wireless technology connection with a LAN access point to access the services of a LAN using PPP.
SPP	Serial Port Profile Enables communication with a device through a virtual serial port configured for a Bluetooth™ wireless technology connection. This can be used for printers and printer adapters with PDAs, using a different method from HCRP or ActiveSync.
HID	Human Interface Device Profile Allows connections to wireless mice, keyboards and other input devices.
HCRP	Hardcopy Cable Replacement Profile Enables printing with a printer driver.
FTP	File Transfer Profile Enables you to browse folders on a wireless device and transfer files to and from the local device.
OPP	Object Push Profile Allows business card data to be exchanged with a wireless device.
A2DP	Advanced Audio Distribution Profile

	Allows audio data to be exchanged between wireless headsets and other audio devices, as well as allowing high-quality music playback.
AVRCP	Audio/Video Remote Control Profile A/V remote control functions such as play and stop. The Bluetooth™ Utility supports remote control operation.
GAVDP	Generic Audio/Video Distribution Profile Basic profile used to support A2DP, AVRCP and other protocols.
HSP	Head Set Profile Profile used for headsets. Allows you to connect to a PC and communicate as well as connect to a mobile telephone.
PAN	Personal Area Networking Profile Supports IP base network. Allows connection to an ad-hoc or wired network via an access point.
BIP	Basic Imaging Profile Allows image files to be sent and received after having been converted to a size suitable for the destination. In addition to being able to transfer image files, the Bluetooth™ Utility allows camera shutters to be operated by remote control, as well as other offering other functionalities.

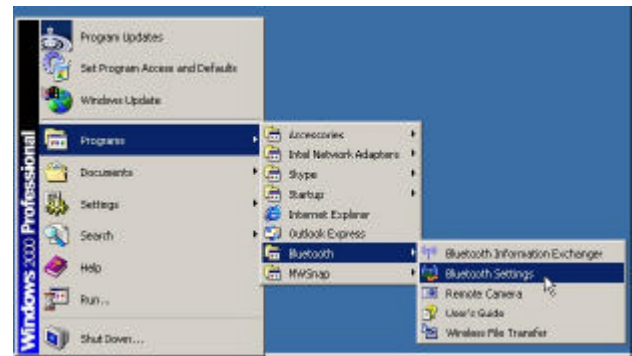
Bluetooth Utility Contents

Bluetooth Settings

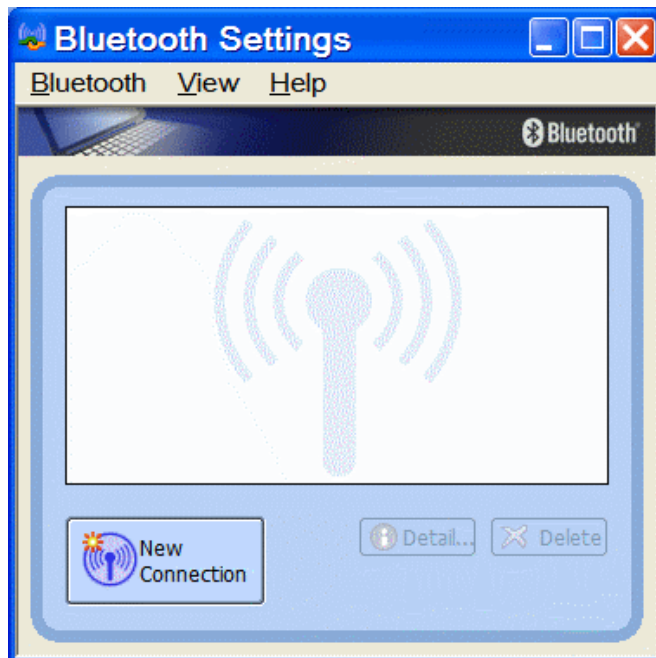
technology icon in the task tray, and select [Bluetooth Settings] from the menu that appears.



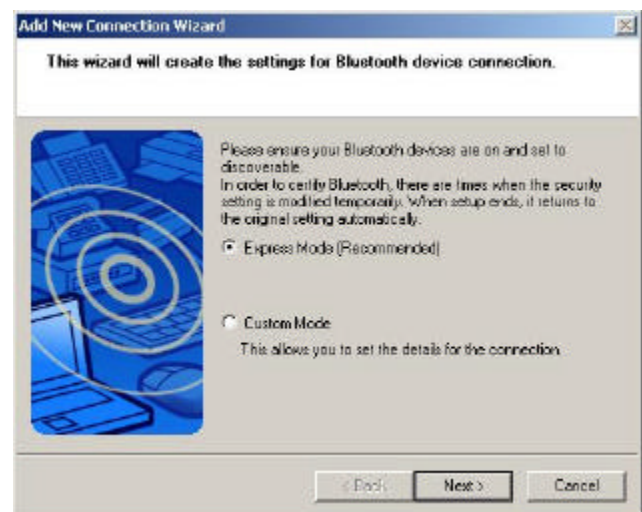
Programs]? [Bluetooth]? [Bluetooth Settings].



2. Please Click “New Connection” to add new Bluetooth device.



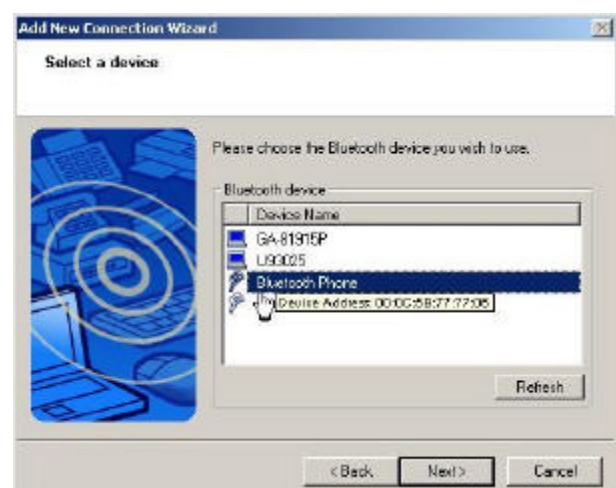
3. Please choose “Express Mode”



4. Searching for Bluetooth devices



5. Select the device name from [Device List] and click on the [Next] button.



6. Please Click “Next”



7. Searching remote devices



Bluetooth Information Exchanger

This program enables you to easily transfer files and images to or exchange business card data with a wireless device by selecting the icon of the counterpart device, or using the right-click menu in Explorer. The wireless devices to which you are connecting must also support the same service functions (FTP, OPP and BIP).

Remote Camera

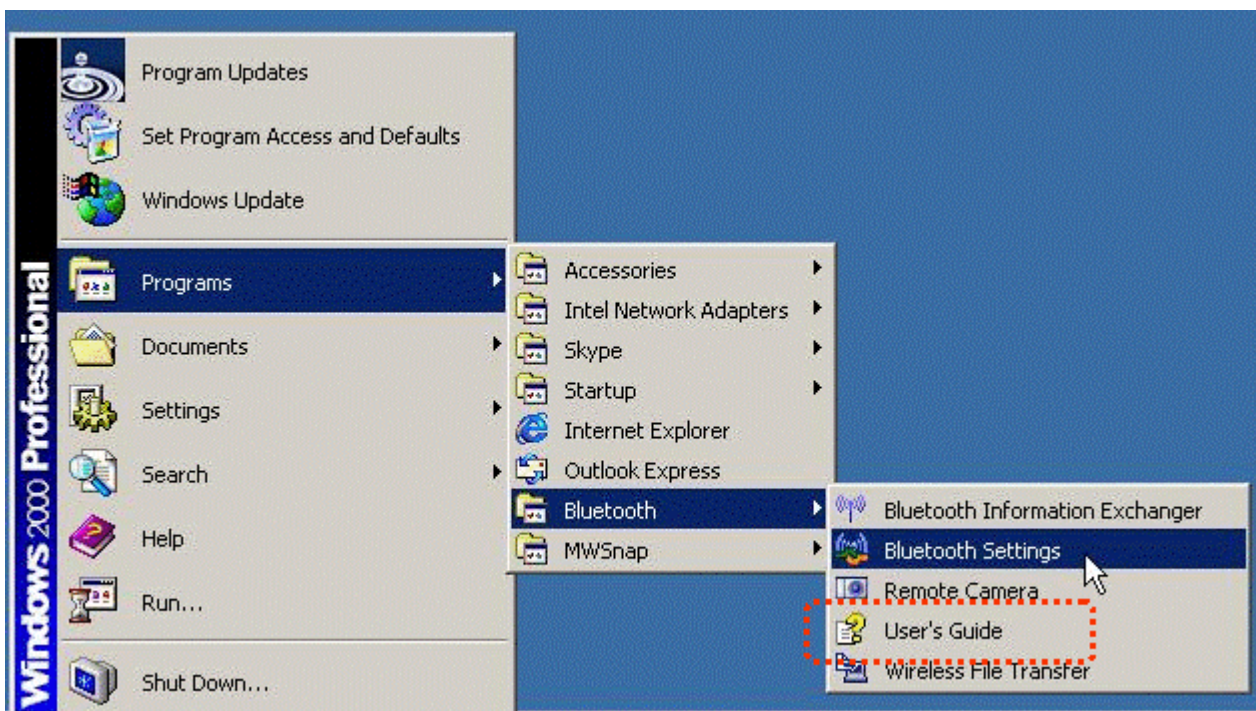
Once you connect to a Bluetooth™ wireless technology-compatible digital camera, you will be able to operate it from the PC side and send captured images to the PC.

Wireless File Transfer

You can send a file wirelessly to another device by right-clicking on the intended file and using the "Sending to Bluetooth Device" menu that appears.

On-line User Guide

When you have troubles in using Toshiba Bluetooth stack, please get on-line help by click Bluetooth->User's Guide



Appendix

Troubleshooting

Problem: Clicking on the [New Connection] button brings up the message "Unable to prepare Bluetooth."

Solution: The wireless communication switch is turned off. Please switch it on.

Problem: Remote device(s) cannot be detected

Solution: The other device(s) may have been set to Non-discoverable mode. Please check the mode settings on the device.

Problem: Services on a remote device are undiscoverable

Solution: The other device may be using a profile that is not supported by the Bluetooth™ Utility

Please check the profile being used on the other device.

The following profiles are compatible with [Bluetooth Settings].

DUN, FAX, LAP, SPP, HID, HCRP, FTP, OPP, HSP, PAN and BIP

Devices running profiles other than those above will not be able to be registered with [Bluetooth Settings]