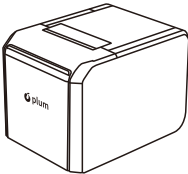


**PLUM
THERMAL
PRINTER**

P-TPRINTER-WIFI

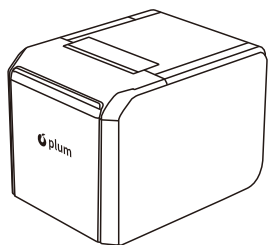


**PLUM
THERMAL
PRINTER**

If you have questions or concerns about our products,
please contact us at: plumpos.com/support. Plum POS,
All rights reserved.

Section 1 /

Warranty Clauses



PLUM THERMAL PRINTER

P-TPRINTER-WIFI



Scope and duration of warranty

1. This warranty is only for the malfunctions caused by material or manufacturing process.
2. Duration of warranty:
 - a. The whole machine warranty for one year.
 - b. Print head warranty for 50km or one year, whichever occurs first.

Warranty principles

1. For the goods out of the scope and duration of warranty, supplier will take charges according to the standards.
2. The warranty will lose efficacy if the goods are disassembled or maintained without permission.
3. The recalled machines must be wrapped as original, or with the same protective effect, the damages caused by transport are not in the scope of warranty.

Section 2 /

Non-warranty Clause

1. Didn't follow the manual and caused printer damage.
2. The damage caused by water or foreign matter invasion.
3. The print head damage caused by over thick media.
4. The print head damage caused by inferior materials.
5. The damages caused by wrong operating environment or force majeure.
6. Use the printer for other over range purposes.
7. Maintenance from unauthorized technician and caused damage.

Section 3 /

Technical Parameters

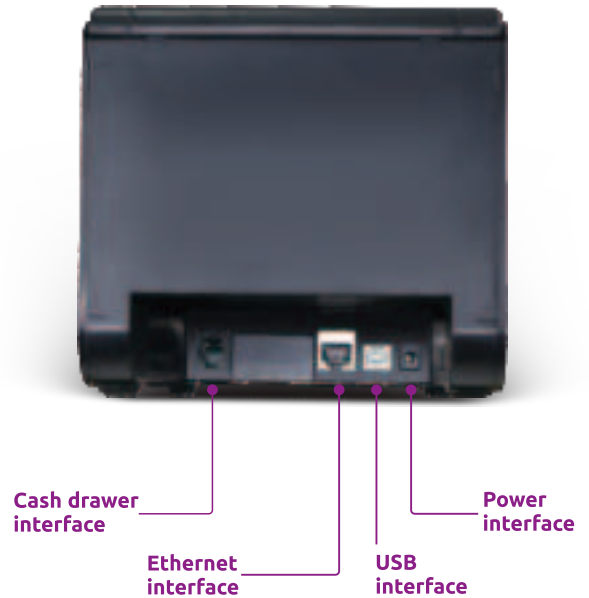
Model	P-TPrinter-WIFI
Print Speed	300mm/s
Print Width	Max 72mm

Character Size	ANK character: Font A: 12 × 24 dots; Font B: 9 × 17 dots Simplified/Traditional Chinese: 24 × 24 dots
Character Set	Simplified Chinese GB18030, Traditional Chinese BIG5, Japanese character library, Korean KSC5601
Print Command	Compatible with ESC / POS / Star commands
Interfaces	USB + Wifi + Network + Cash Drawer
Print Head Wear Resistance	150km
Cutter Life	1,500,000 times
Cutter Type	Half cut
Bar Code / Square Code	UPC-A / UPC-E / JAN13 (EAN13) / JAN8 (EAN8) / ITF / CODABAR / CODE39 / CODE93 / ODE128 / QRCODE / PDF417 / Data Matrix
Paper Thickness	0.06~0.08mm
Storage	4M
Power Adaptor	External
Power Input	DC 24V 2.5A
Cash Drawer Output	DC 24V 1A
Working Environment	Temp: 0~45°C, Hum: 20%~90% no condensation
Storage Environment	Temp: -20~55°C, Hum: 20%~93% no condensation

Section 4 /

Quick Installation Guide

Product Appearance:



Interfaces:

- Connect the adapter cable to the printer power port.
- Connect the interface cable to the rear port of the printer.
- Connect the cash drawer cable to the cash drawer port on the back of the printer.

Caution:

The interfaces and the appearance of the machine in the picture will be different due to the type you bought. The actual appearance and interfaces should be based on the actual machine.

Loading paper

- ① Open the printer cover from the direction of the button icon;
- ② Install the paper roll, paying attention to the thermal coating direction of the roll;
- ③ Pull out a piece of paper out from device, and close the cover.

* If it is a new paper roll, it must be pulled out more than one circle of paper that exceeds the adhesive on the ticket paper to avoid printing defect.

Paper roll installation steps: a b c d



Remark: After the roll paper installation, cover clamshell tightly, to avoid malfunction.

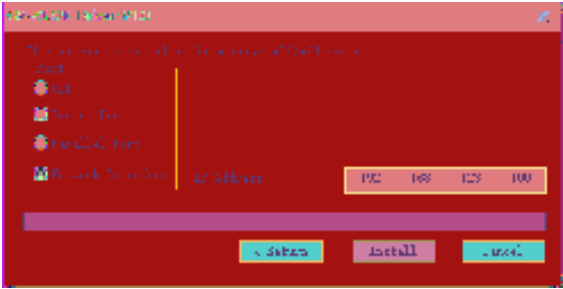
The specifications, accessories, components and programs are subject to change without prior notice.

WiFi Parameters Reset Method

Function	Operating Instructions
Print WIFI information	When printer is turned on,press and hold the paper feed button for about 6 seconds, and release the button after the buzzer beeps once.
Reset WIFI	When printer is turned on, press and hold the paper feed button for about 20 seconds, and release the button after the buzzer beeps once.

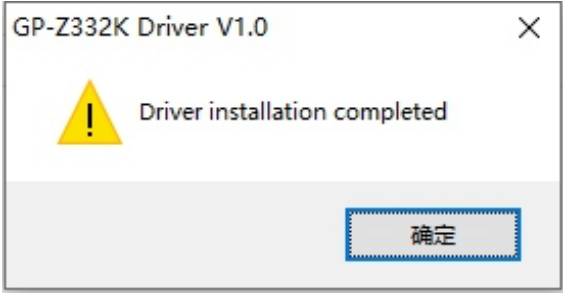


- ⑥ Select the appropriate printer port and click Install;



- ⑦ USB ⑦ Serial Port ⑦ Parallel Port ⑦ Network Interface

- ⑦ Driver installation completed.



Section 5 /
Driver Installation

- ① Double-click to open the compressed folder through the downloaded driver, and open the printer driver, select GP-Z332K, click Next;

FCC Statement

This equipment has been tested and found to comply with the limits for a Class B digital device, pursuant to part 15 of the FCC Rules. These limits are designed to provide reasonable protection against harmful interference in a residential installation. This equipment generates, uses and can radiate radio frequency energy and, if not installed and used in accordance with the instructions, may cause harmful interference to radio communications. However, there is no guarantee that interference will not occur in a particular installation. If this equipment does cause harmful interference to radio or television reception, which can be determined by turning the equipment off and on, the user is encouraged to try to correct the interference by one or more of the following measures:

- ⊙ Reorient or relocate the receiving antenna.
- ⊙ Increase the separation between the equipment and receiver.
- ⊙ Connect the equipment into an outlet on a circuit different from that to which the receiver is connected.
- ⊙ Consult the dealer or an experienced radio/TV technician for help.

Caution: Any changes or modifications to this device not explicitly approved by manufacturer could void your authority to operate this equipment.

This device complies with part 15 of the FCC Rules. Operation is subject to the following two conditions:

- (1) This device may not cause harmful interference, and
- (2) this device must accept any interference received, including interference that may cause undesired operation.

RF Exposure Information

This equipment complies with FCC radiation exposure limits set forth for an uncontrolled environment. This equipment should be installed and operated with minimum distance 20cm between the radiator and your body.