



October 14, 2014

TUV SUD Zacta Ltd.

5-4149-7, Hachimanpara, Yonezawa-shi

Yamagata, 992-1128 Japan

DECLARATION OF IDENTITY

The KYY09 is the changed configuration model KYY08.

The changed parts are as follows,

1. Dimensions, Metal parts, Receiver.

Additionally, differences of KYY08 / KYY09 is added to next page.

Sincerely

Responsible Name:

Yoshikazu Yamamoto

Title:

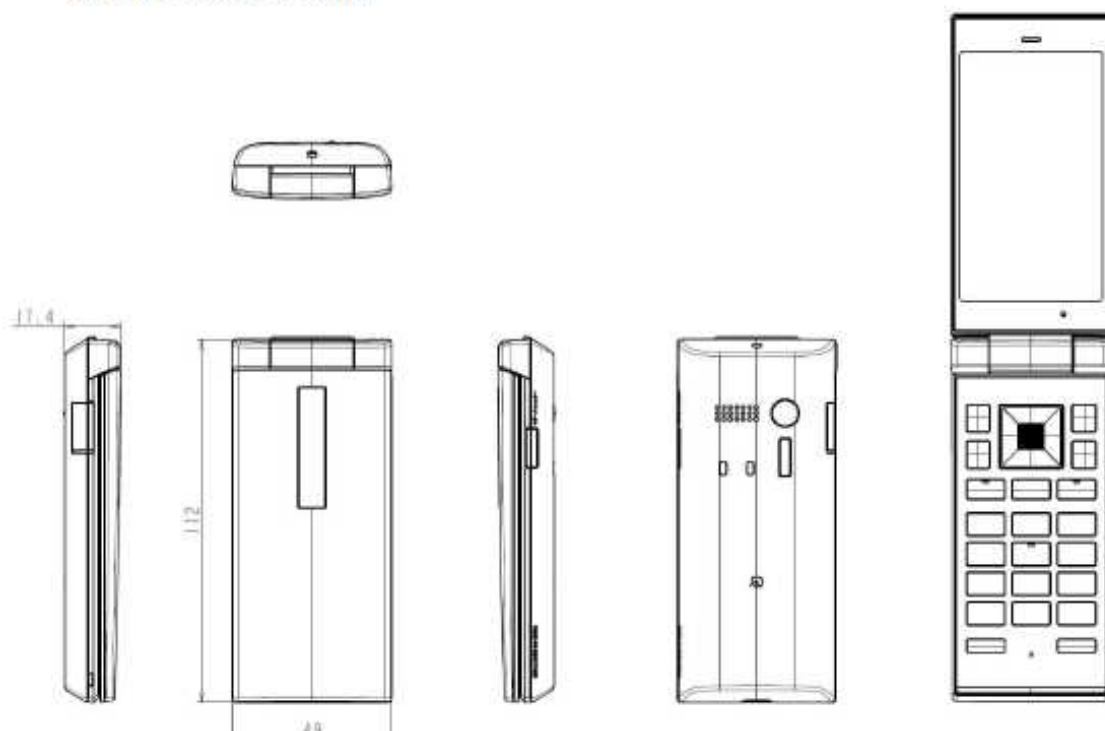
Manager of Quality Assurance Dept.

The differences between KYY08(FCC ID: JOYKYY08) and similarity model: KYY09

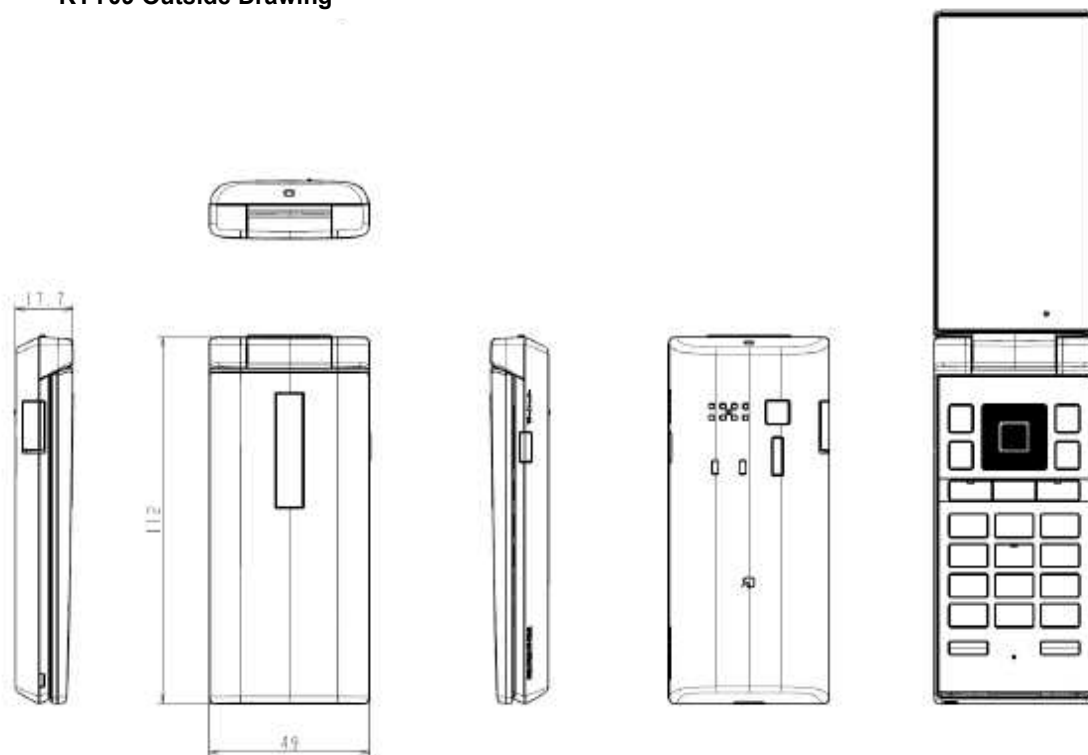
Item	KYY08(base model)	KYY09	Supported docs
Dimensions / Appearance	49 x 112 x 17.4mm	49 x 112 x 17.7mm Some shape was changed (Minor changes)	See the out view drawings. <KYY08_outside_drawing.pdf> <KYYXX_outside_drawing.pdf>
FRAME AXIS LCD	-	Added	See the drawing. <frame axis lcd.pdf>
Block diagram	Receiver	Changed to Piezo receiver with SPAMP	See the drawings. <KYY08_Block diagram.pdf> <KYYXX_Block diagram.pdf>
Receiver	Hosiden HDR2218-010121 32ohms / 6x14x1.5mm	Kyocera SRKC12 1.21uF / 3.3x23.2x1.18mm	See the speaker drawings. <HDR2218-010121 for KYY08.pdf> <SKRC12 for KYYXX.pdf>
LCD PCB Placement	-	<ul style="list-style-type: none"> ● Receiver connector was changed due to Piezo receiver ● SPAMP(IC2M04) was added due to Piezo receiver ● Shield shape was changed due to SPAMP ● LCD PCB shape was changed due to above 3 items 	See the drawings. <KYY08_LCD_PCB Placement.pdf> <KYYXX_LCD_PCB Placement.pdf>

*: Except for LCD PCB(Printed Circuit Board) and Receiver, all PCB and installed components are completely same with KYY08.

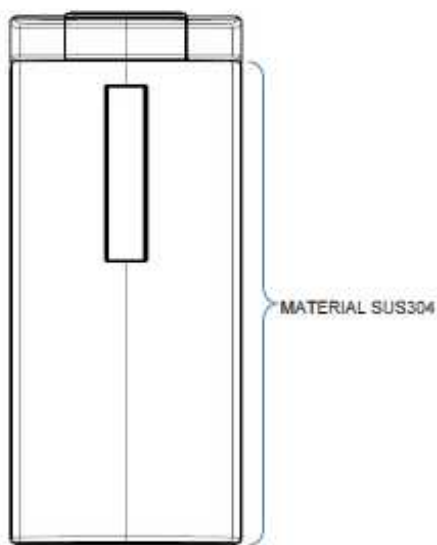
KYY08 Outside Drawing



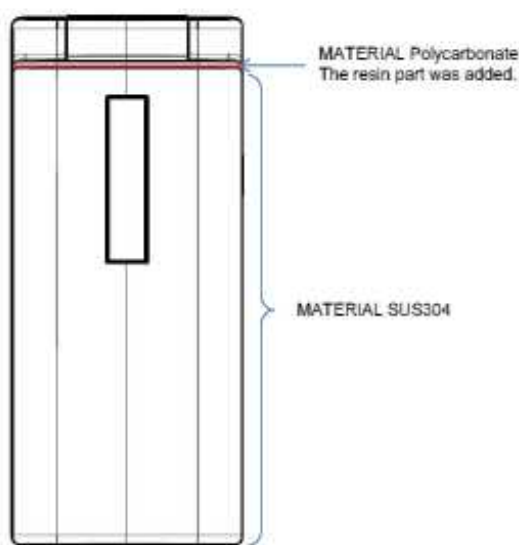
KYY09 Outside Drawing



Frame axis lcd part

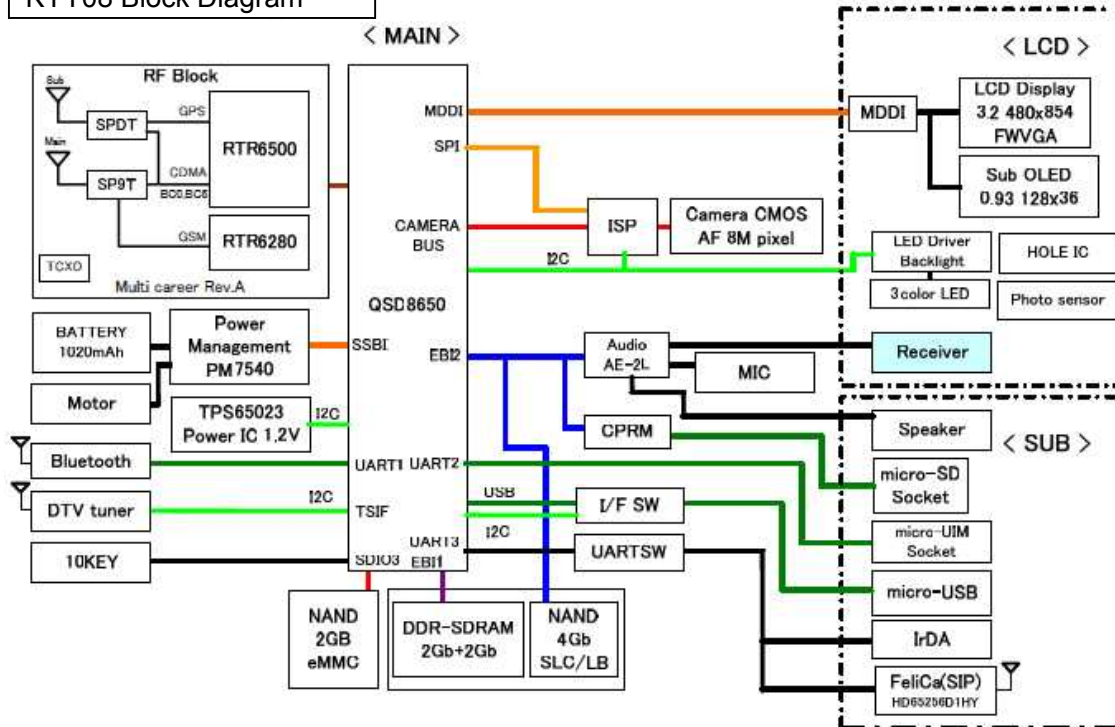


KYY08

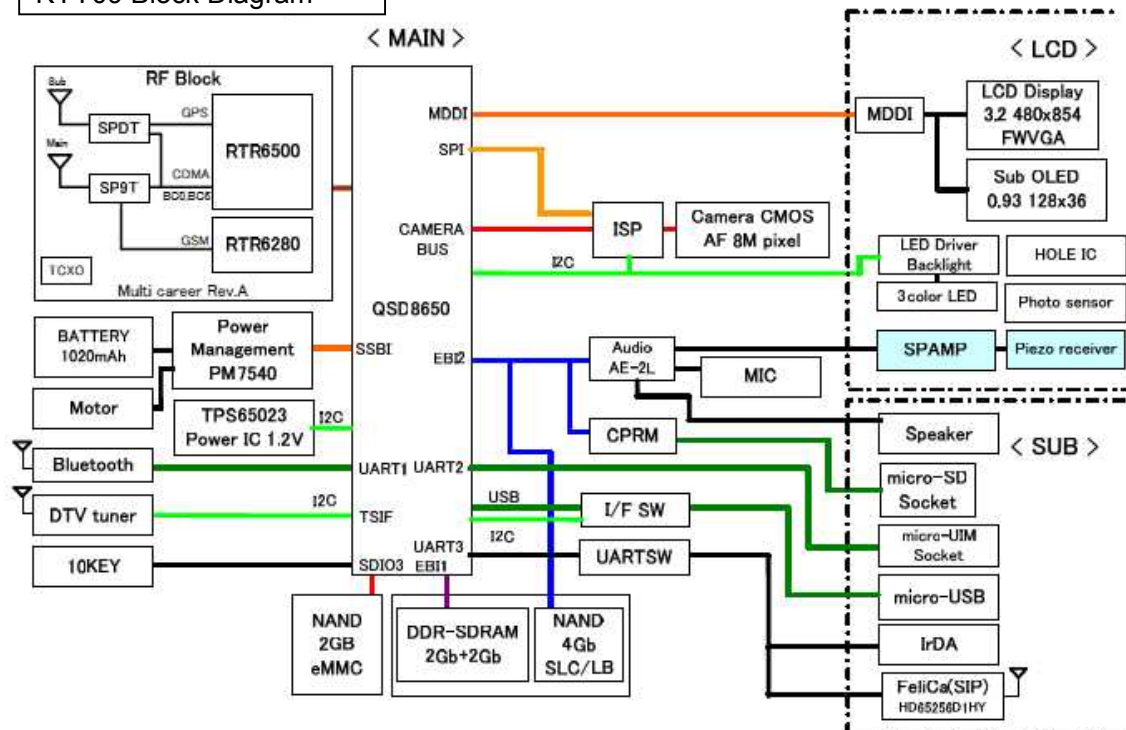


KYY09

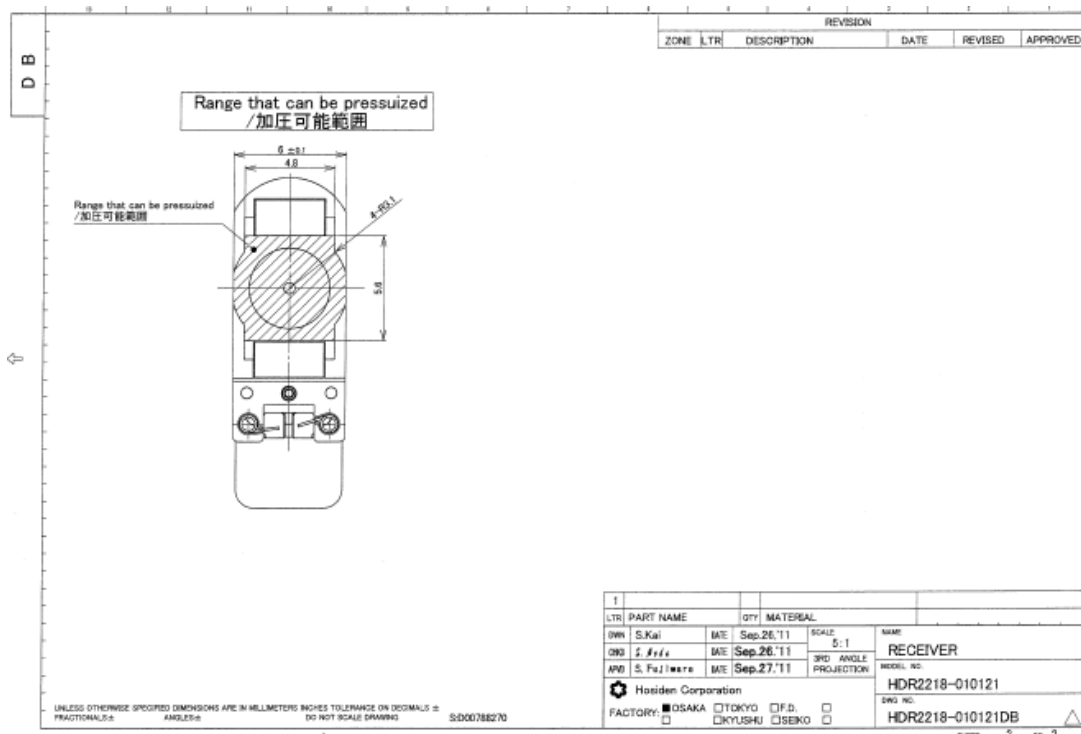
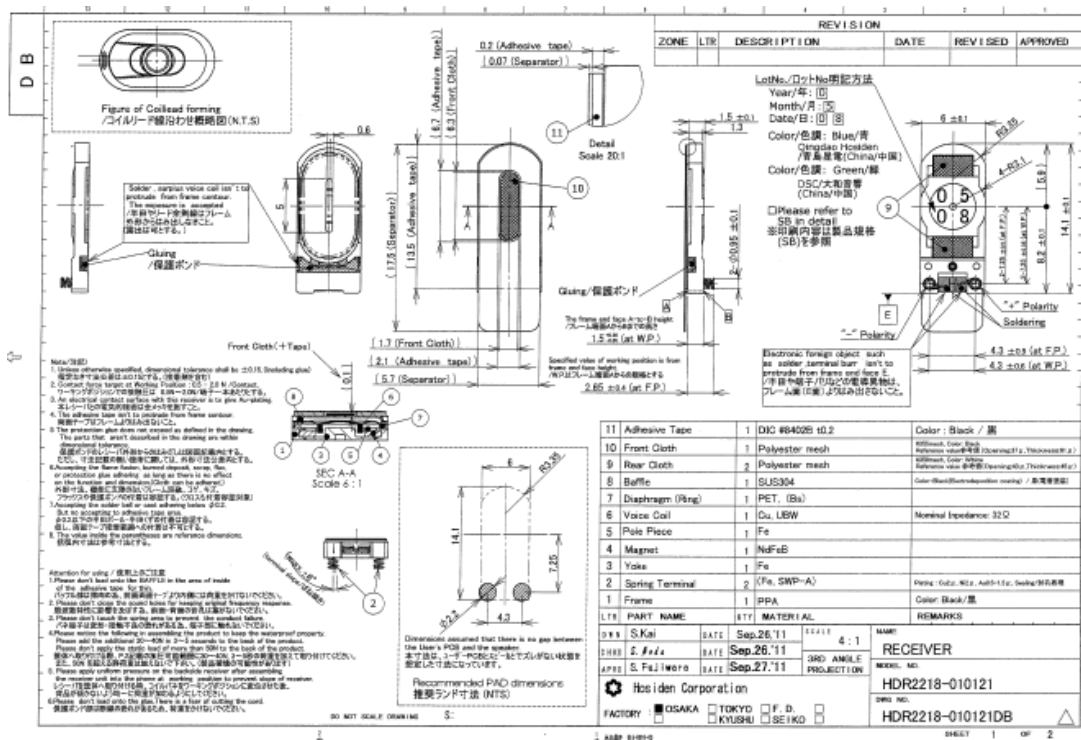
KYY08 Block Diagram



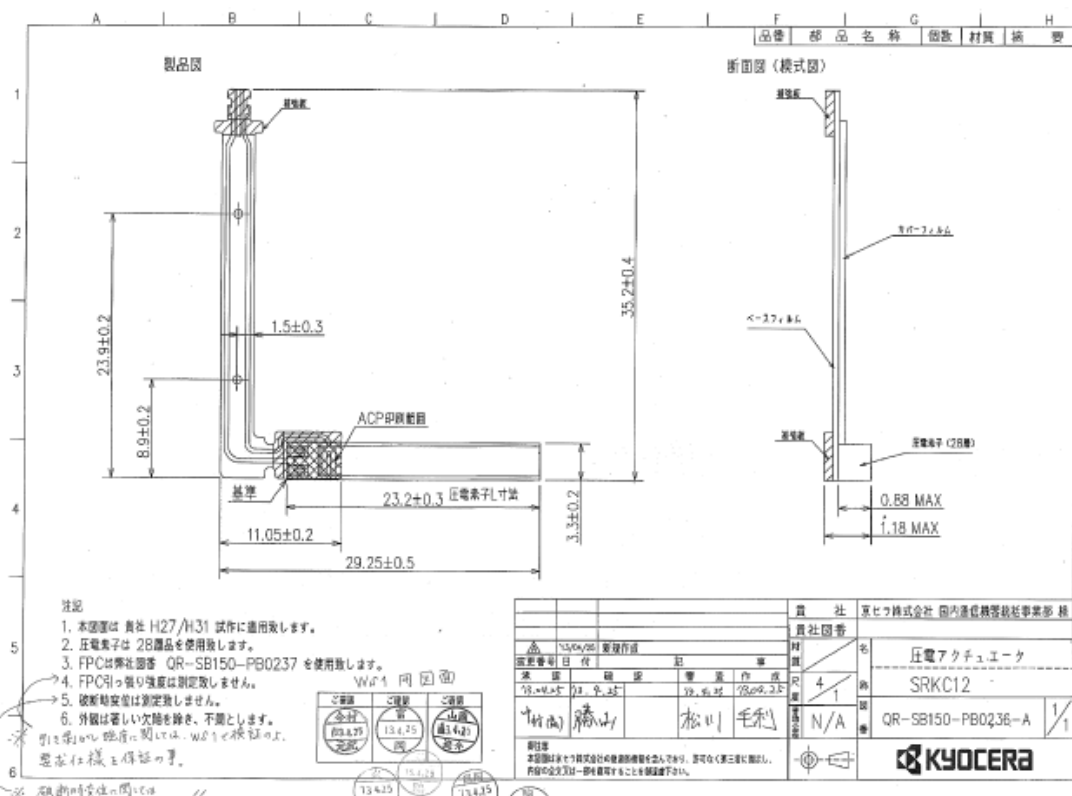
KYY09 Block Diagram

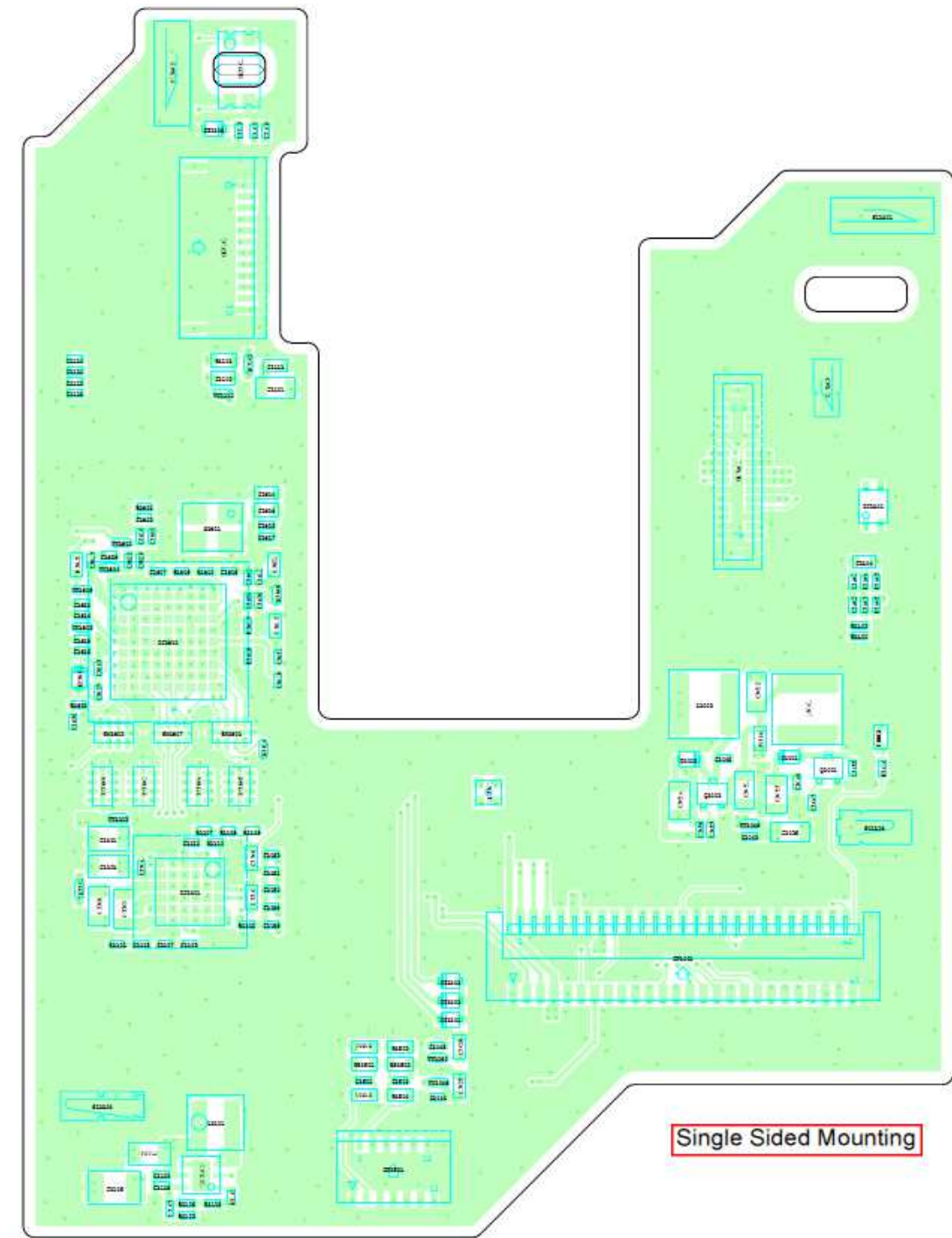


KYY08 Receiver



KYY09 Receiver





Single Sided Mounting

KYY08 LCD BOARD

KYY09 LCD BOARD

