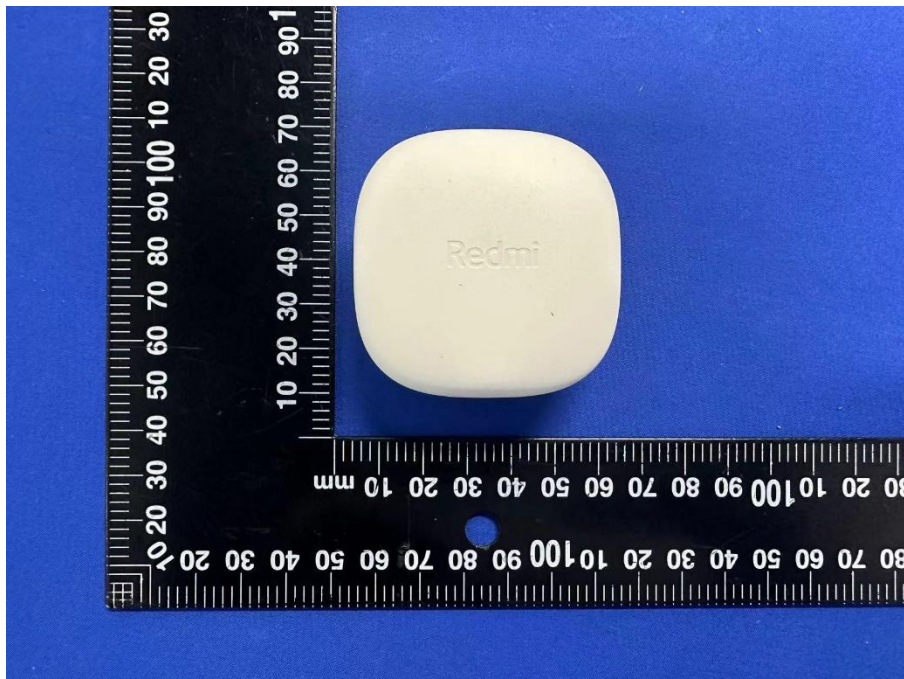


EUT EXTERNAL PHOTOS

Box:

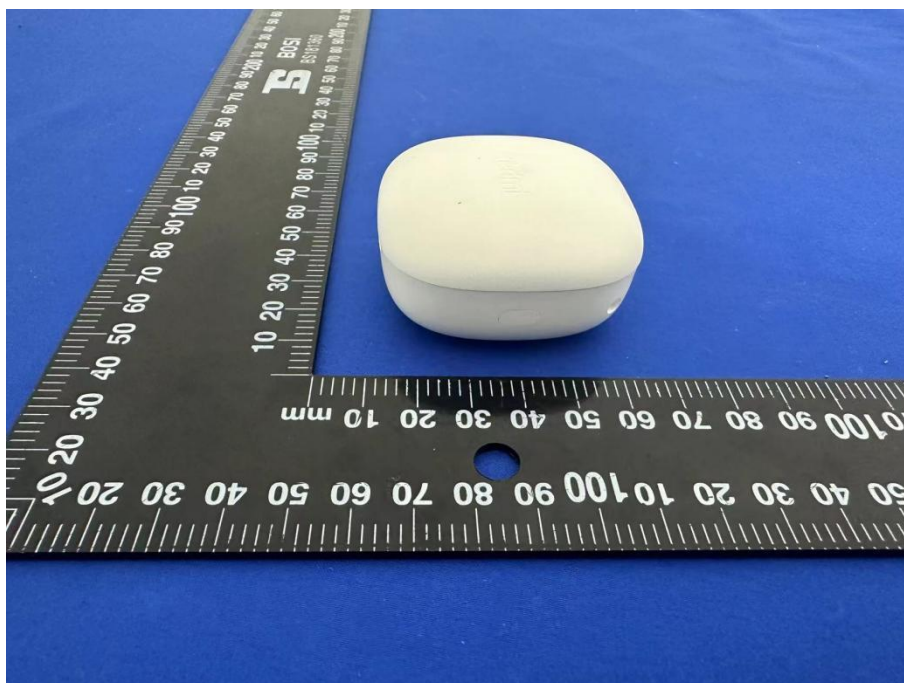
FRONT VIEW OF EUT



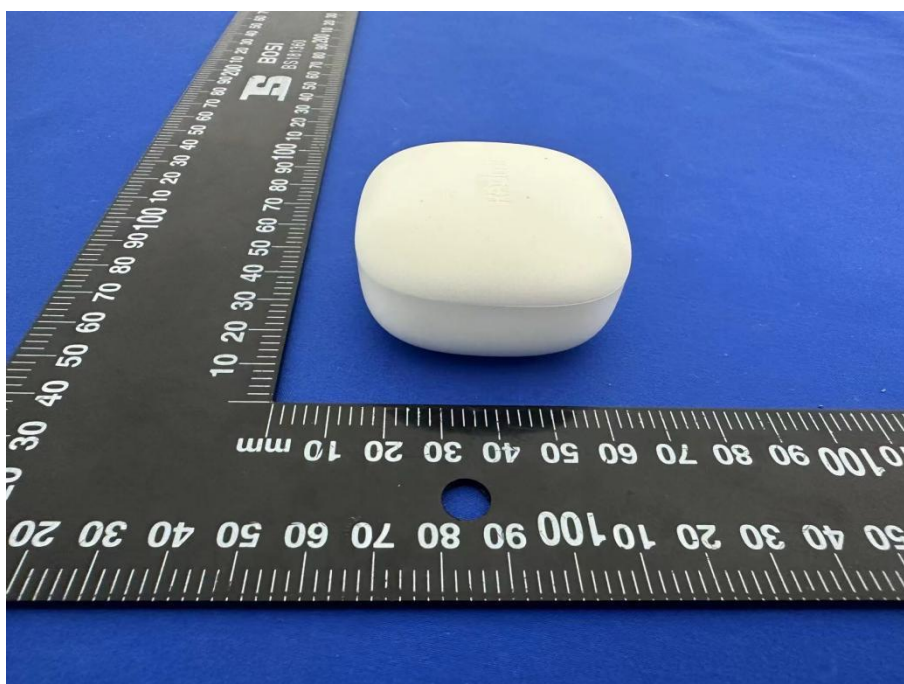
REAR VIEW OF EUT



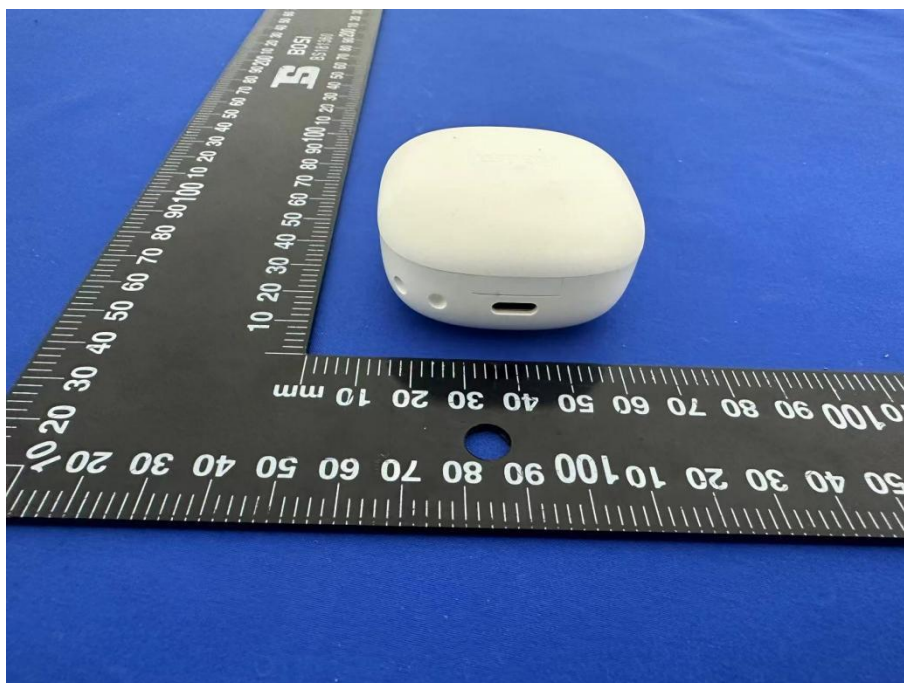
LEFT VIEW OF EUT



RIGHT VIEW OF EUT



TOP VIEW OF EUT



BOTTOM VIEW OF EUT

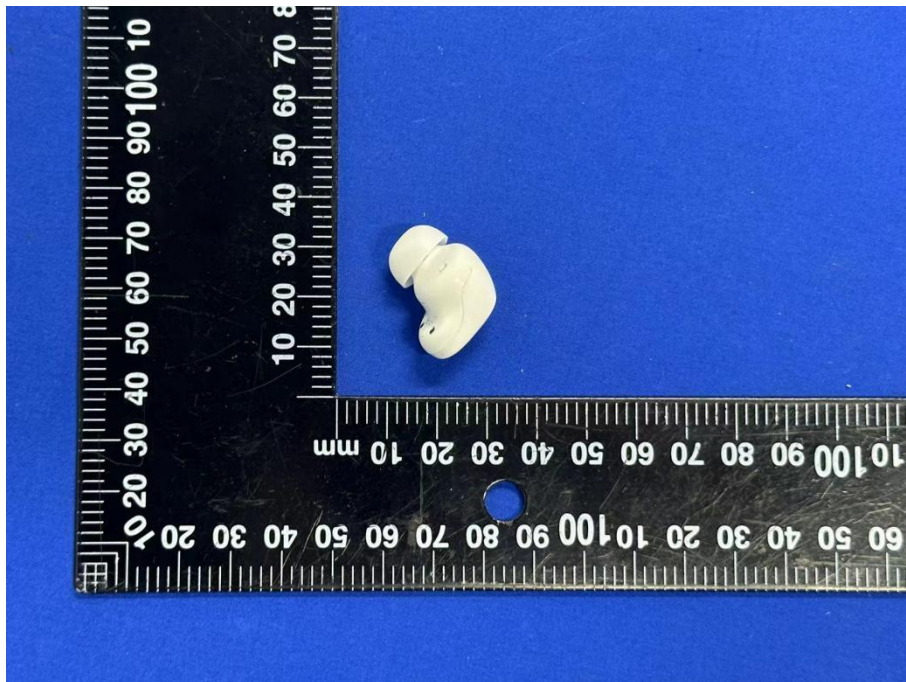


Earphone: Left ear

FRONT VIEW OF EUT



REAR VIEW OF EUT



LEFT VIEW OF EUT



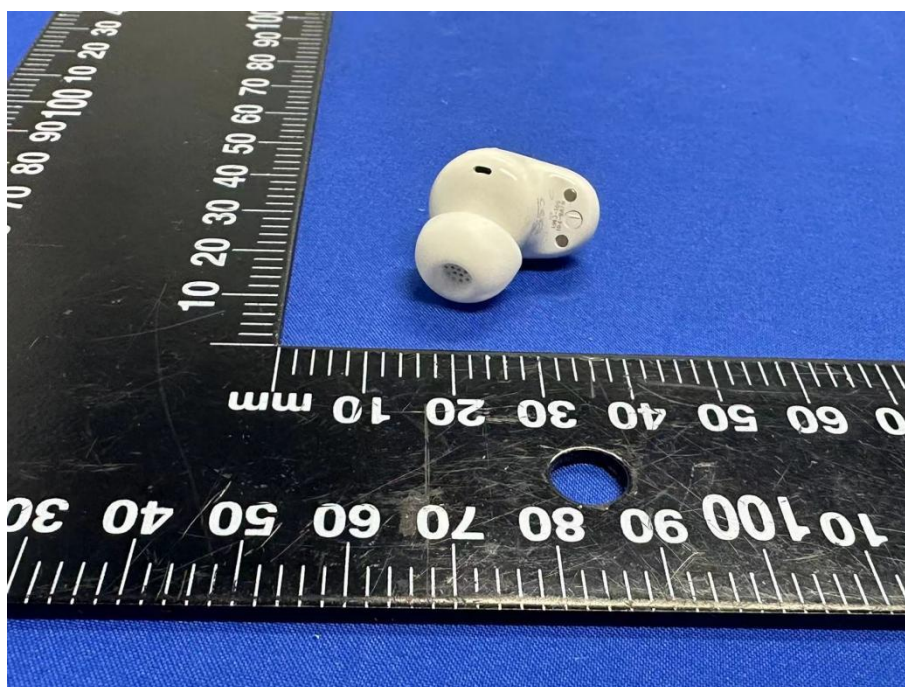
RIGHT VIEW OF EUT



TOP VIEW OF EUT



BOTTOM VIEW OF EUT



Earphone: Right ear

FRONT VIEW OF EUT



REAR VIEW OF EUT



LEFT VIEW OF EUT



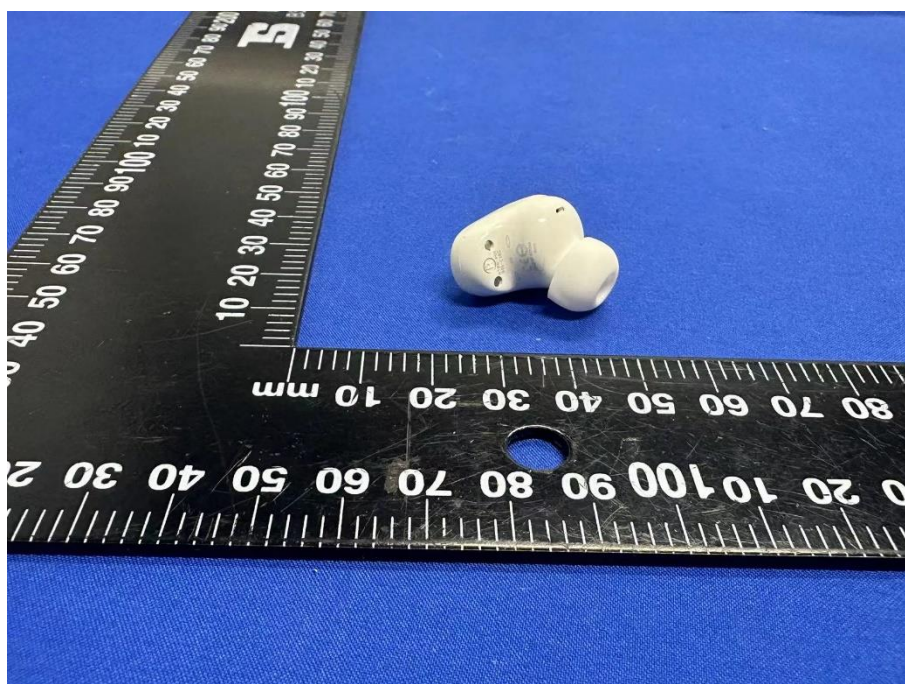
RIGHT VIEW OF EUT



TOP VIEW OF EUT



BOTTOM VIEW OF EUT



Ancillary Equipment

Ancillary Equipment 1	Li-Polymer Battery 1 (earphones)	
	Brand Name	MI
	Model No.	1154A
	Serial No.	N/A
	Capacitance	Typical: 57mAh
	Rated Voltage	3.85Vdc
	Limited Voltage	4.40Vdc
	Manufacturer	Dongguan Perfect Amperex Technology Limited
Ancillary Equipment 2	Li-Polymer Battery (alternative) 2 (earphones)	
	Brand Name	MI
	Model No.	HT1158HA
	Serial No.	N/A
	Capacitance	Typical: 57mAh
	Rated Voltage	3.85Vdc
	Limited Voltage	4.40Vdc
	Manufacturer	Huizhou Everpower Technology Co., Ltd.
Ancillary Equipment 3	Li-Polymer Battery (alternative) 3 (Charging case)	
	Brand Name	MI
	Model No.	HT782039
	Serial No.	N/A
	Capacitance	Typical: 600mAh
	Rated Voltage	3.70Vdc
	Limited Voltage	4.20Vdc
	Manufacturer	Huizhou Everpower Technology Co., Ltd.
Ancillary Equipment 4	Li-Polymer Battery (alternative) 4 (earphones)	
	Brand Name	MI
	Model No.	YD1154
	Serial No.	N/A
	Capacitance	Typical: 57mAh
	Rated Voltage	3.85Vdc
	Limited Voltage	4.40Vdc
	Manufacturer	Hunan Yideng New Energy Co., Ltd.
Ancillary Equipment 5	Li-Polymer Battery (alternative) 5 (Charging case)	
	Brand Name	MI
	Model No.	802040
	Serial No.	N/A
	Capacitance	Typical: 600mAh
	Rated Voltage	3.70Vdc
	Limited Voltage	4.20Vdc

	Manufacturer	Hunan Yideng New Energy Co., Ltd.
<p>Note 1: Both the earphones and the charging case have built-in batteries, which come in three configurations. Configuration 1: 1154A + 802040; Configuration 2: HT1158HA + HT782039; Configuration 3: YD1154 + 802040.</p> <p>Note 2: All battery combination tests have been considered, and the report only shows the data of the worst combination YD1154 + 802040.</p>		

--BLANK BELOW--