

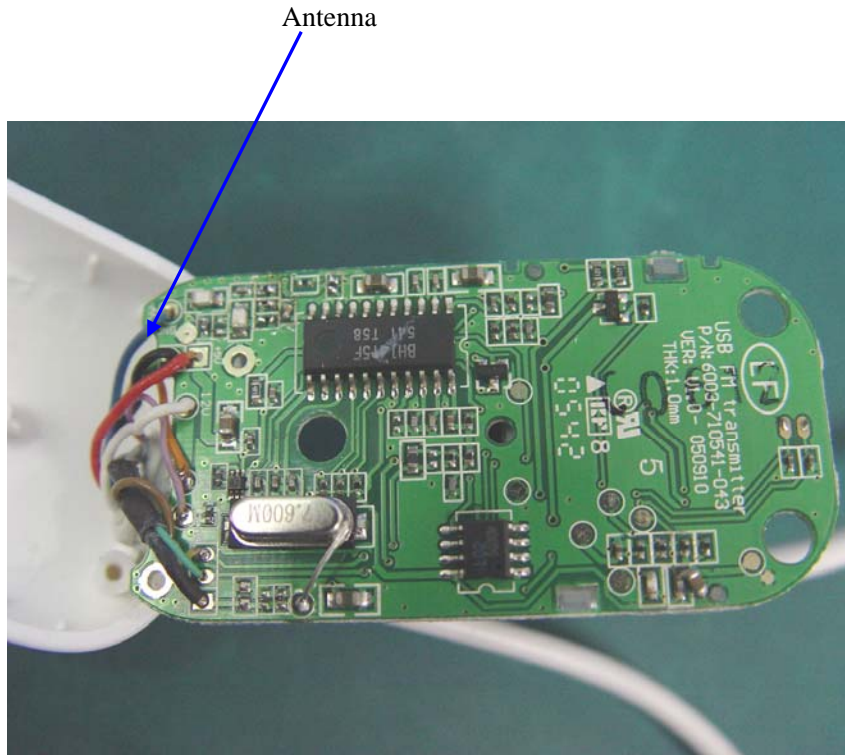
1) How does this device operate?

Please see the file(Operation description-new.pdf).

2) Provide information on the device and its antenna.

This product is designed to power, charge, and transmit audio from your iPod to your car stereo.

The transmitter utilize dipole antenna. The antenna was solder to PCB.



3) How is it installed?

The transmitter is fed by 12v car power supply. It can connected to the car power outlet only.

4) What test procedure was used?

ANSI C63.4. the test was performed in the chamber.

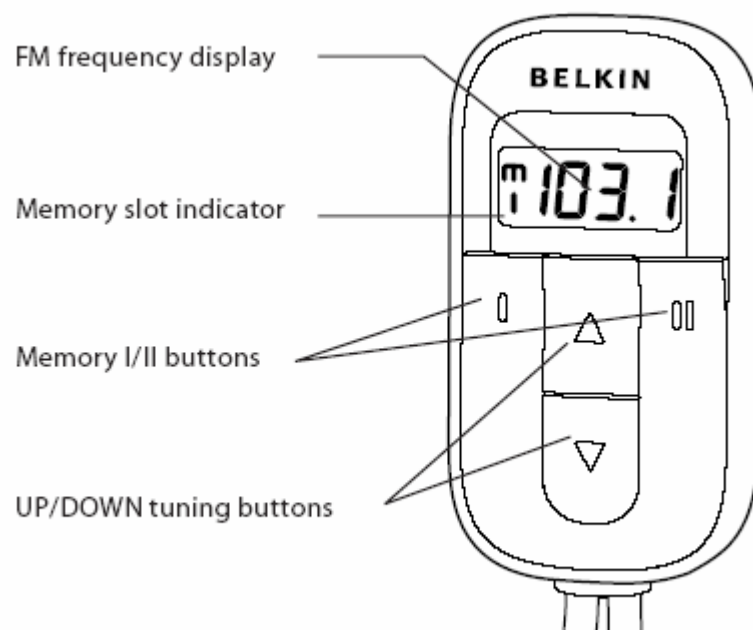
5) If tested in a car, how was it configured/tested?

the test was performed in the chamber.

6) Was the tuning range properly verified? The test lab should indicate in the report that the tuning controls were manually adjusted to verify maximum tuning range.

The FM transmitter is a FM stereo transmitting configuration, which radiates FM wave on the air by modulating the any required signal to the carrier signal. The transmission frequency is set from 88.1 to 107.9MHz.

We selected the low(88.1MHz) mid(98MHz) and High(107.9MHz) working frequency to measure the frequency. Press the \uparrow or \downarrow button on the TuneCast Auto to select the transmission frequency .



7) Was the bandwidth properly tested with maximum audio input?

The test was performed with the maximum audio input. And play MP3.