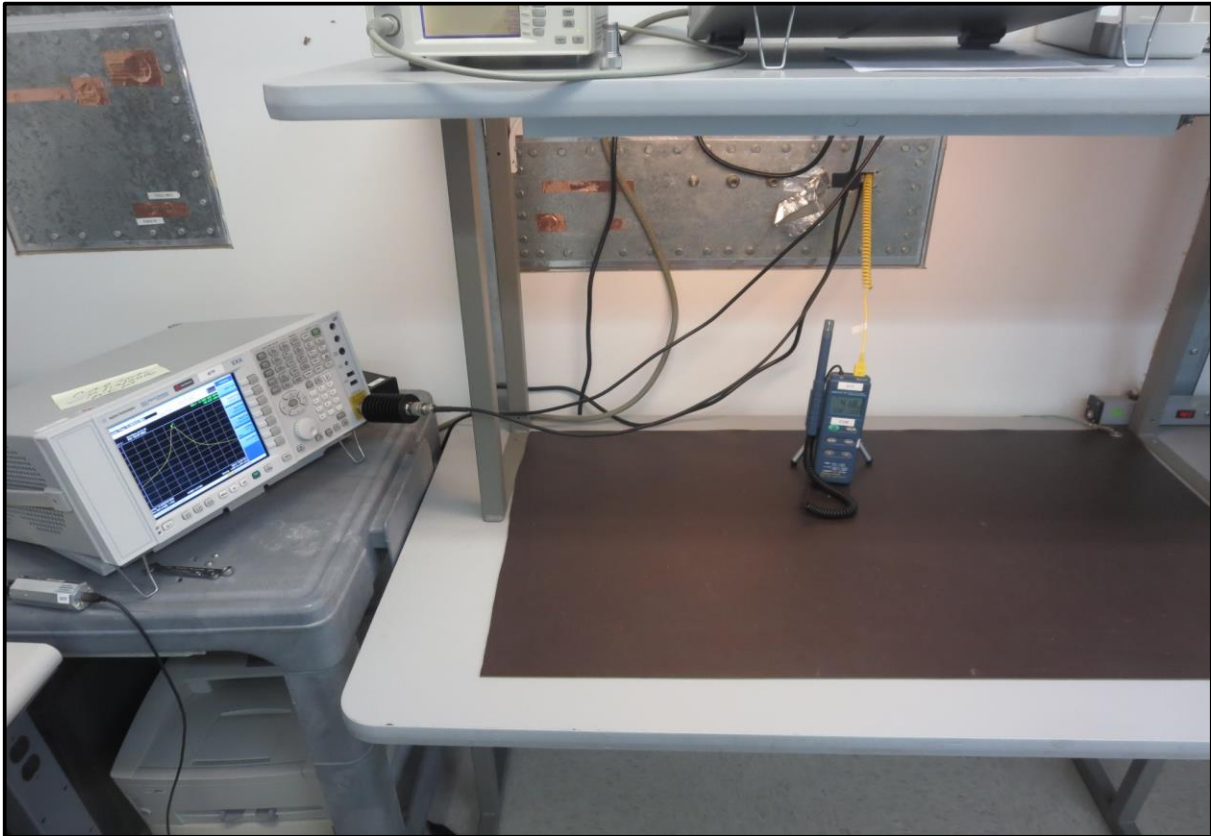


# FREQUENCY STABILITY

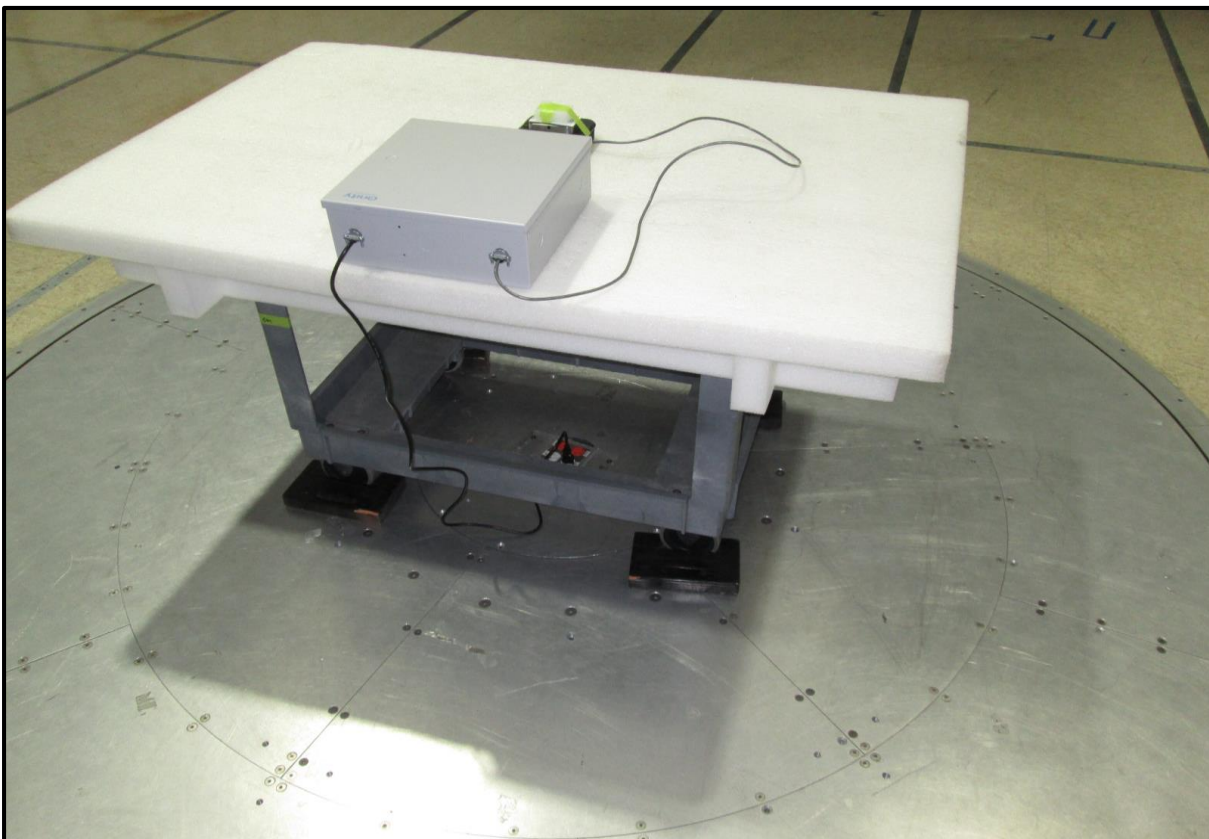
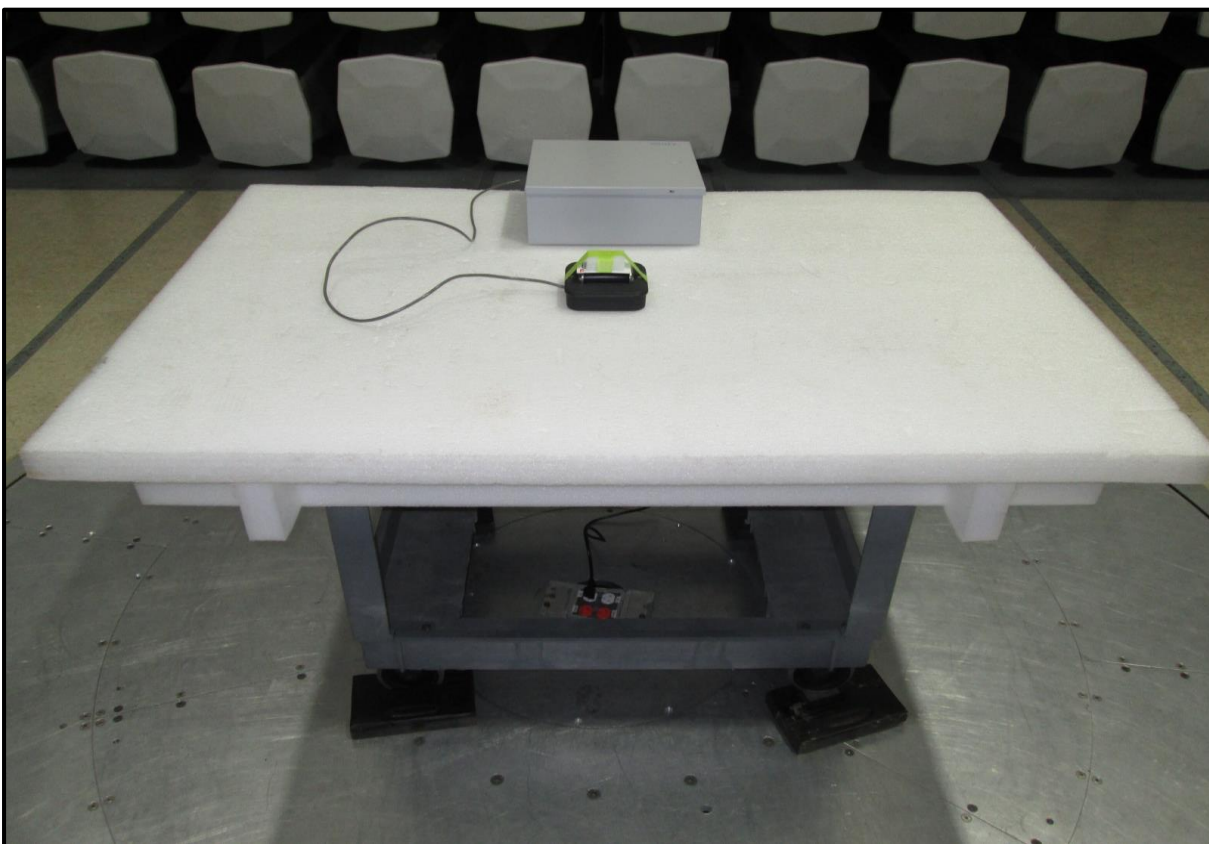


# FREQUENCY STABILITY

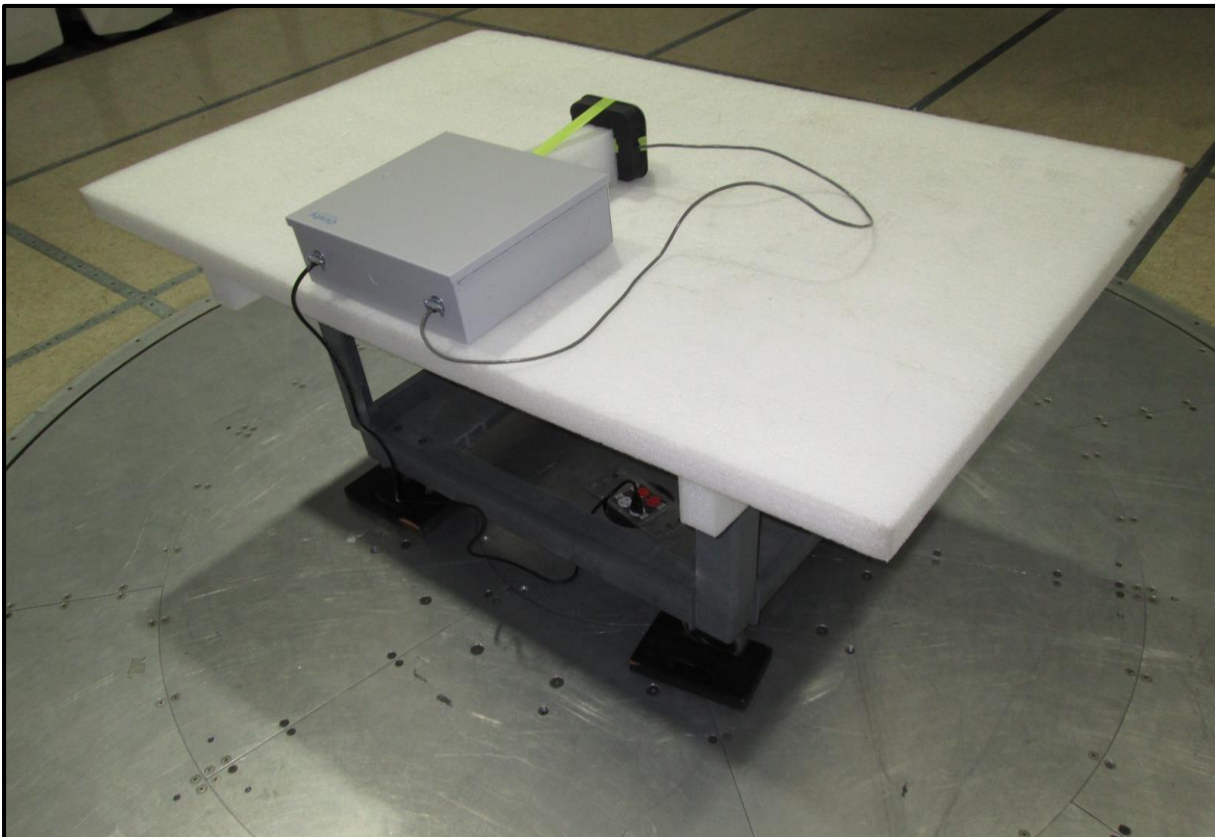
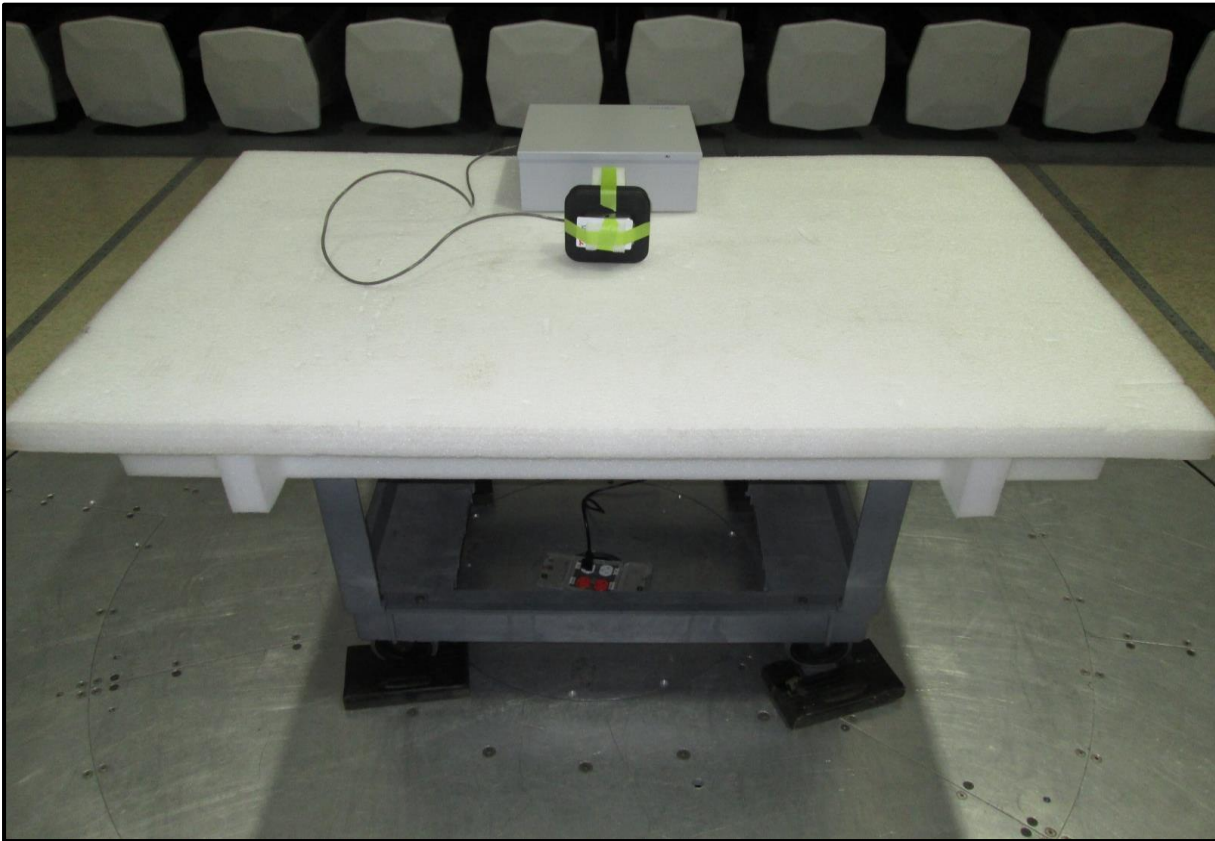




## FIELD STRENGTH OF FUNDAMENTAL

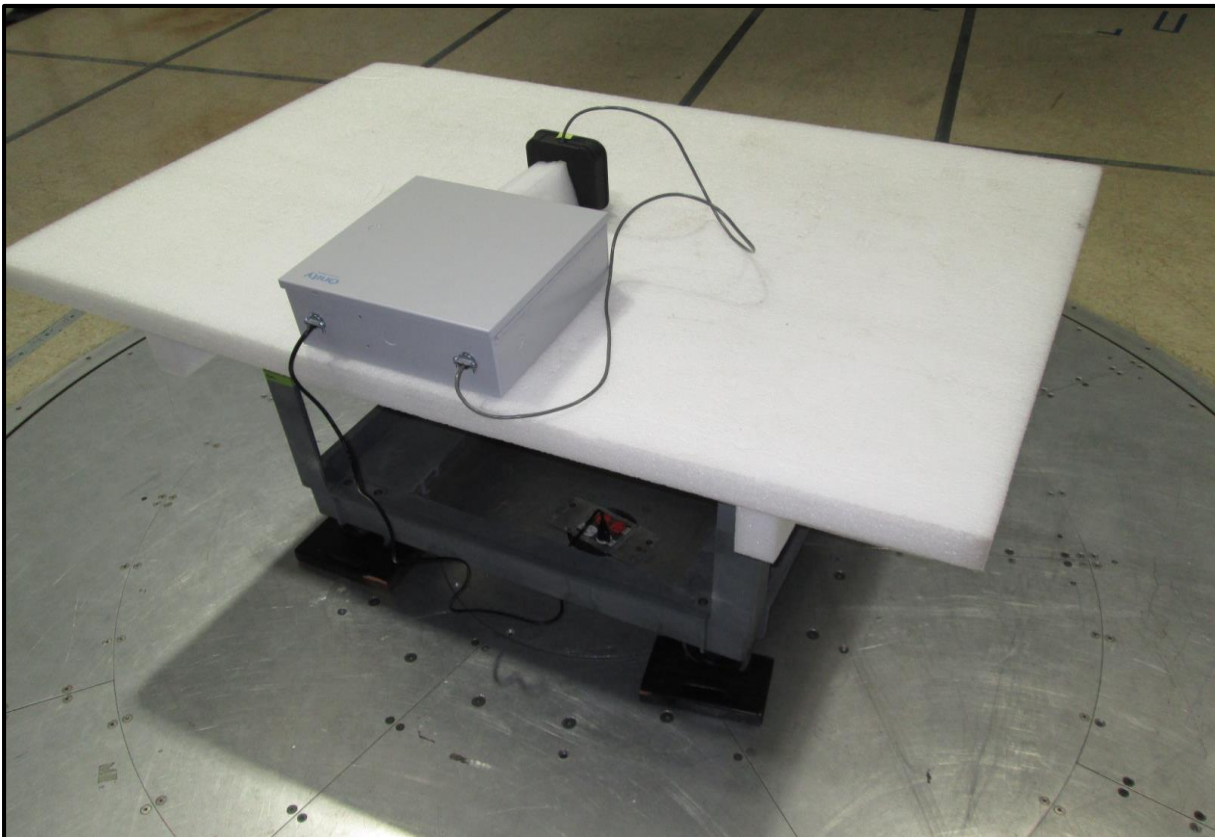


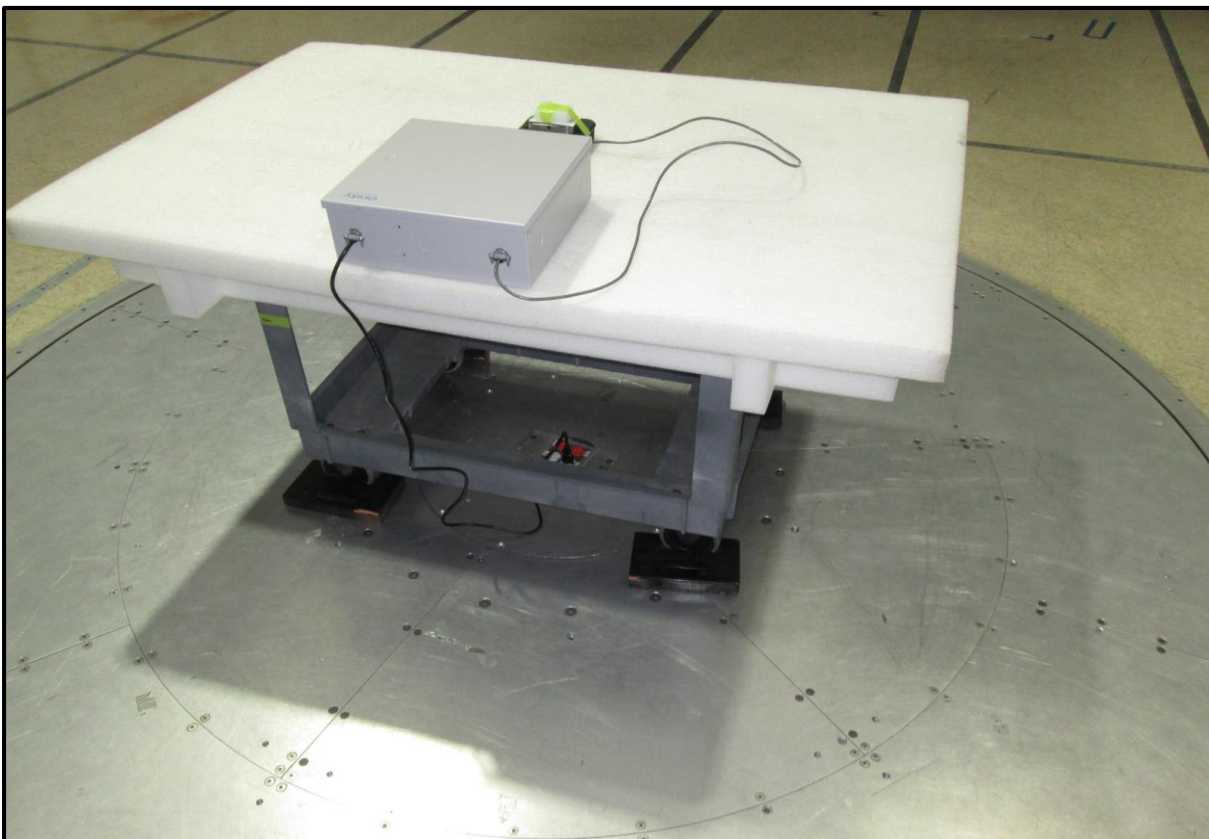
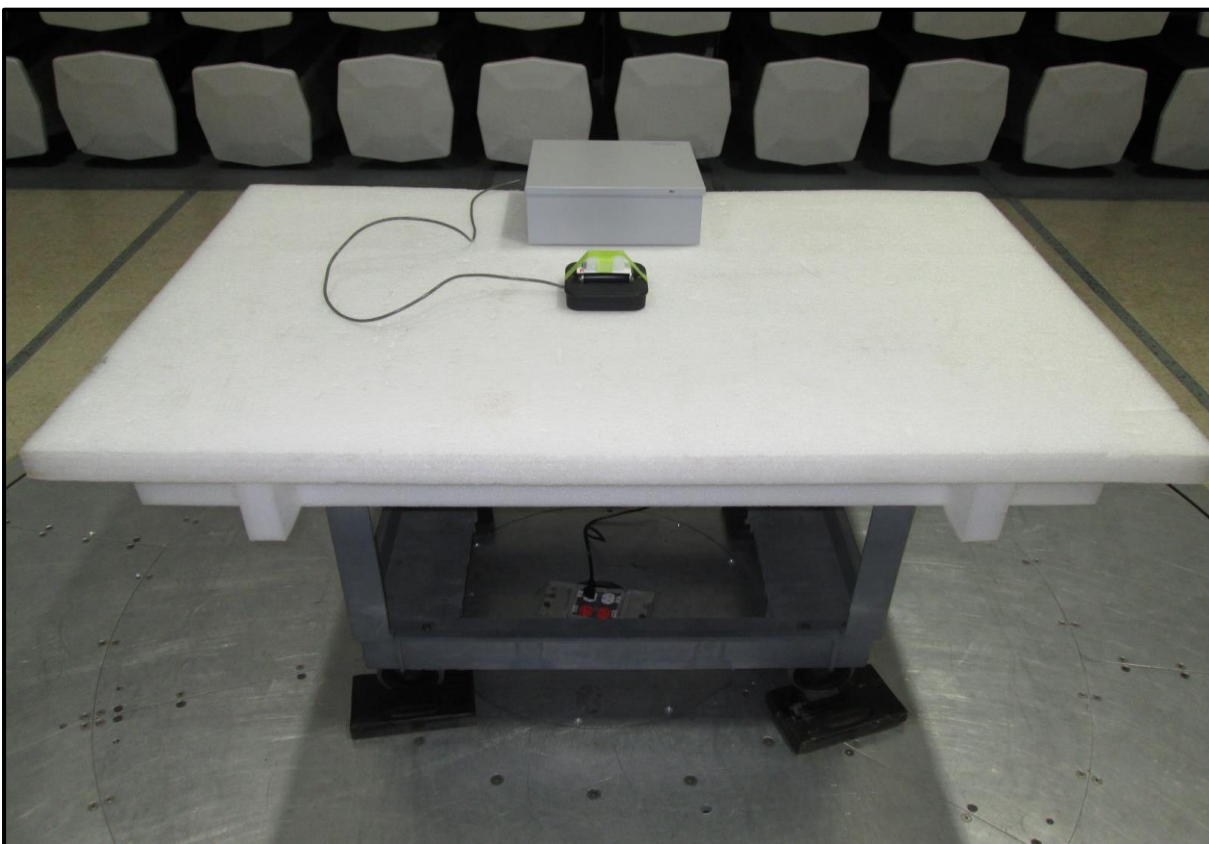
## FIELD STRENGTH OF FUNDAMENTAL



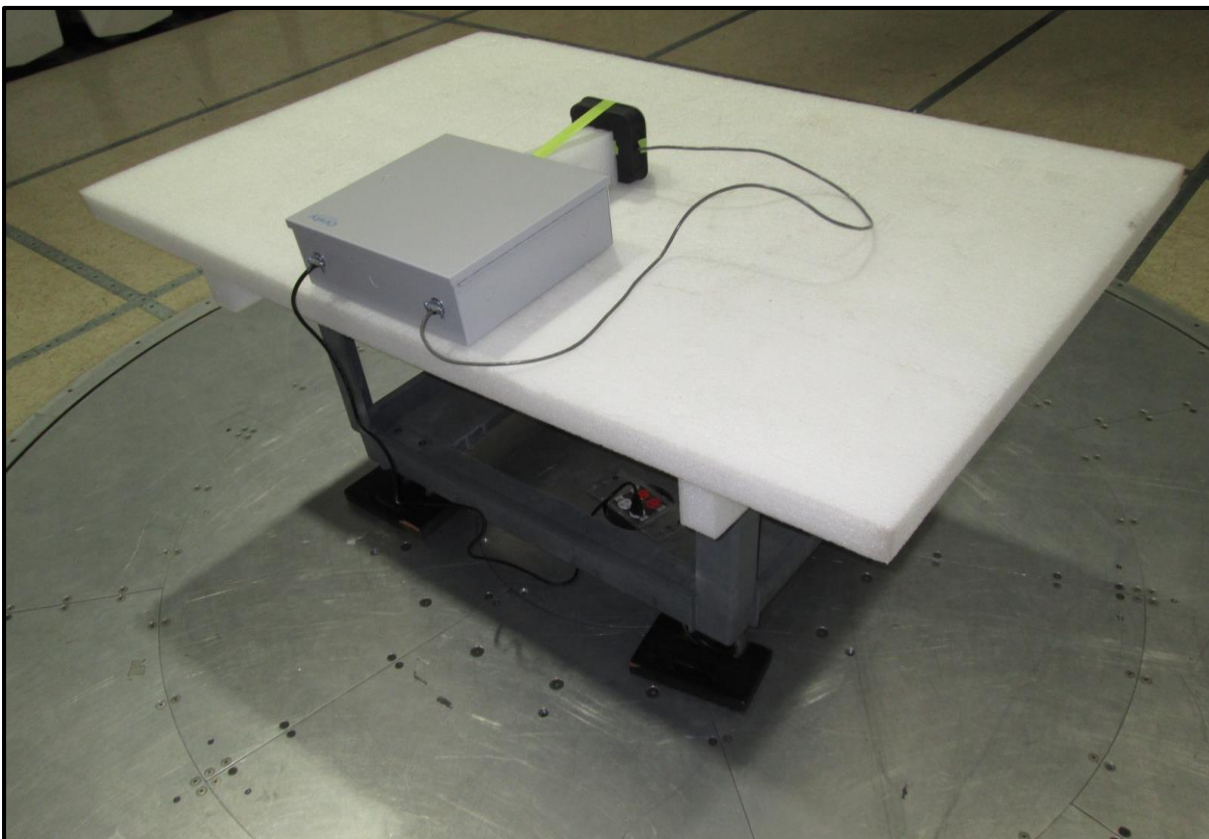
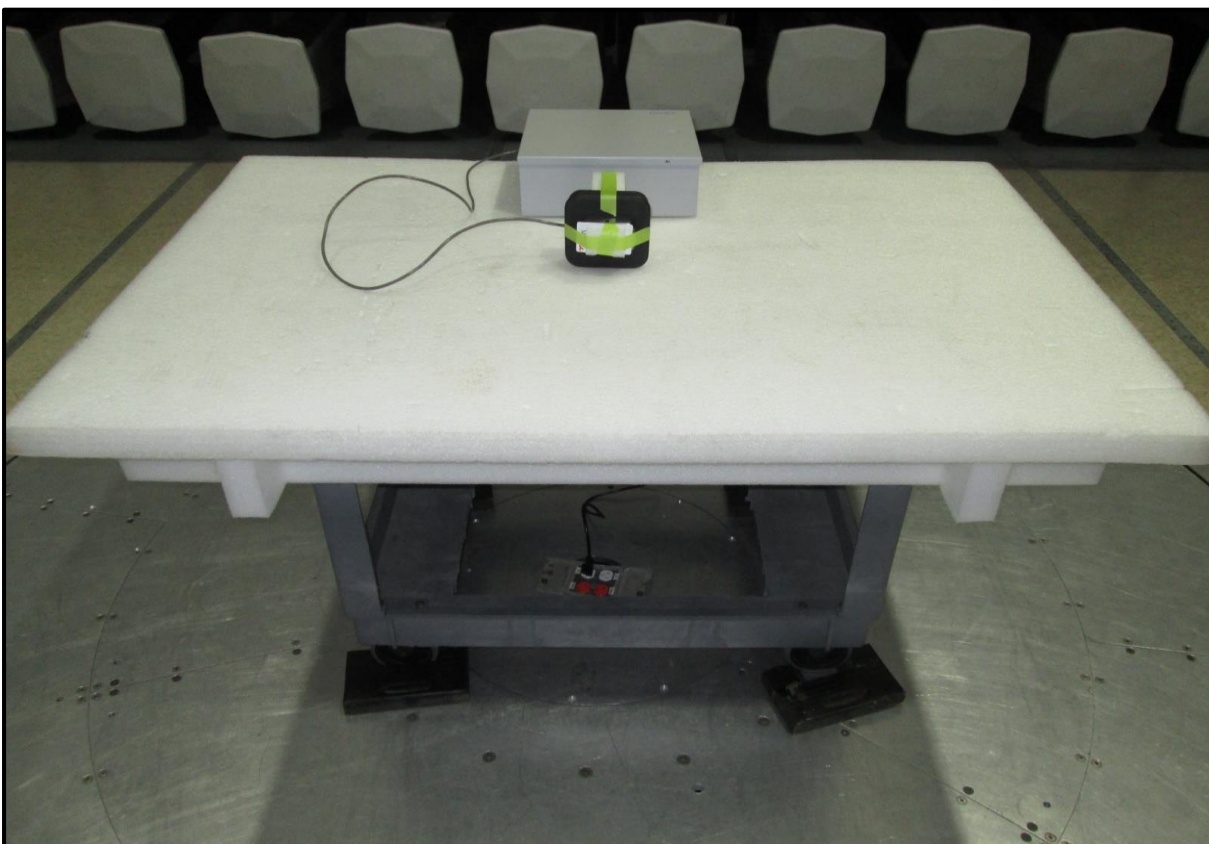


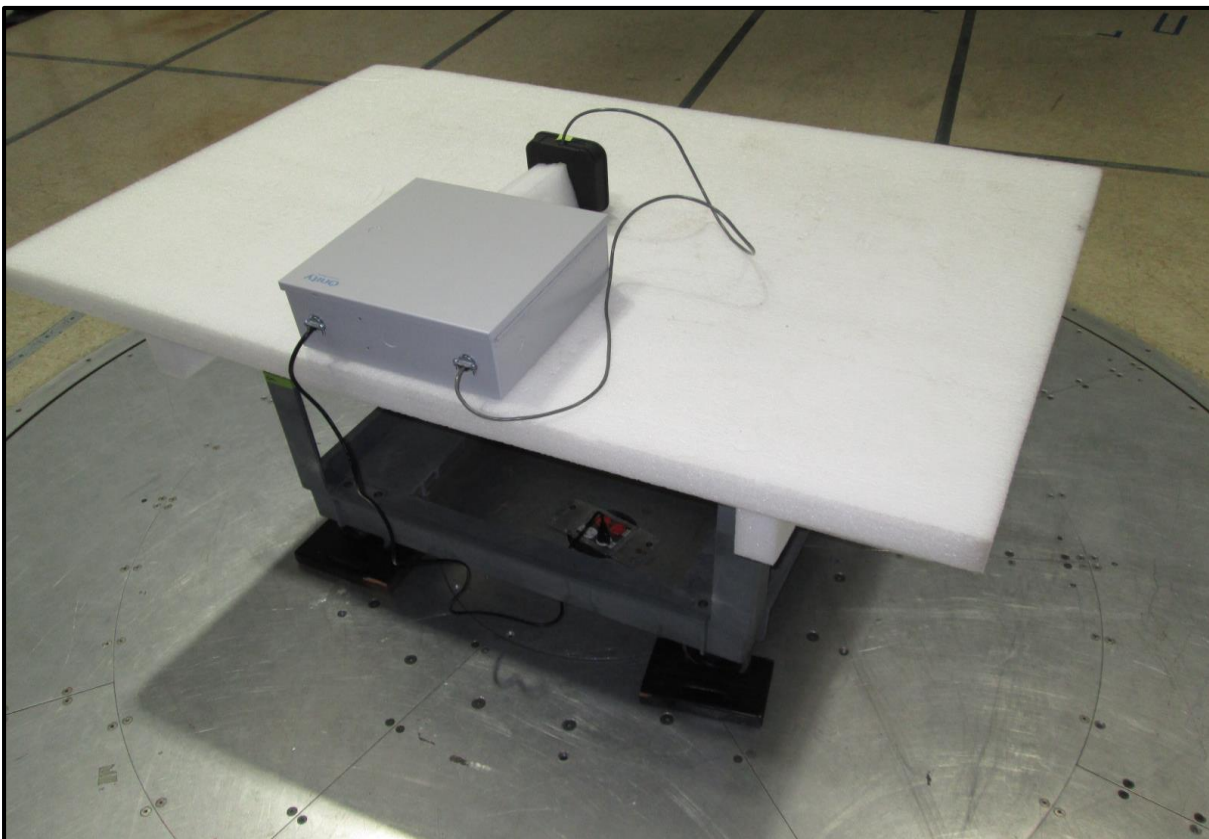
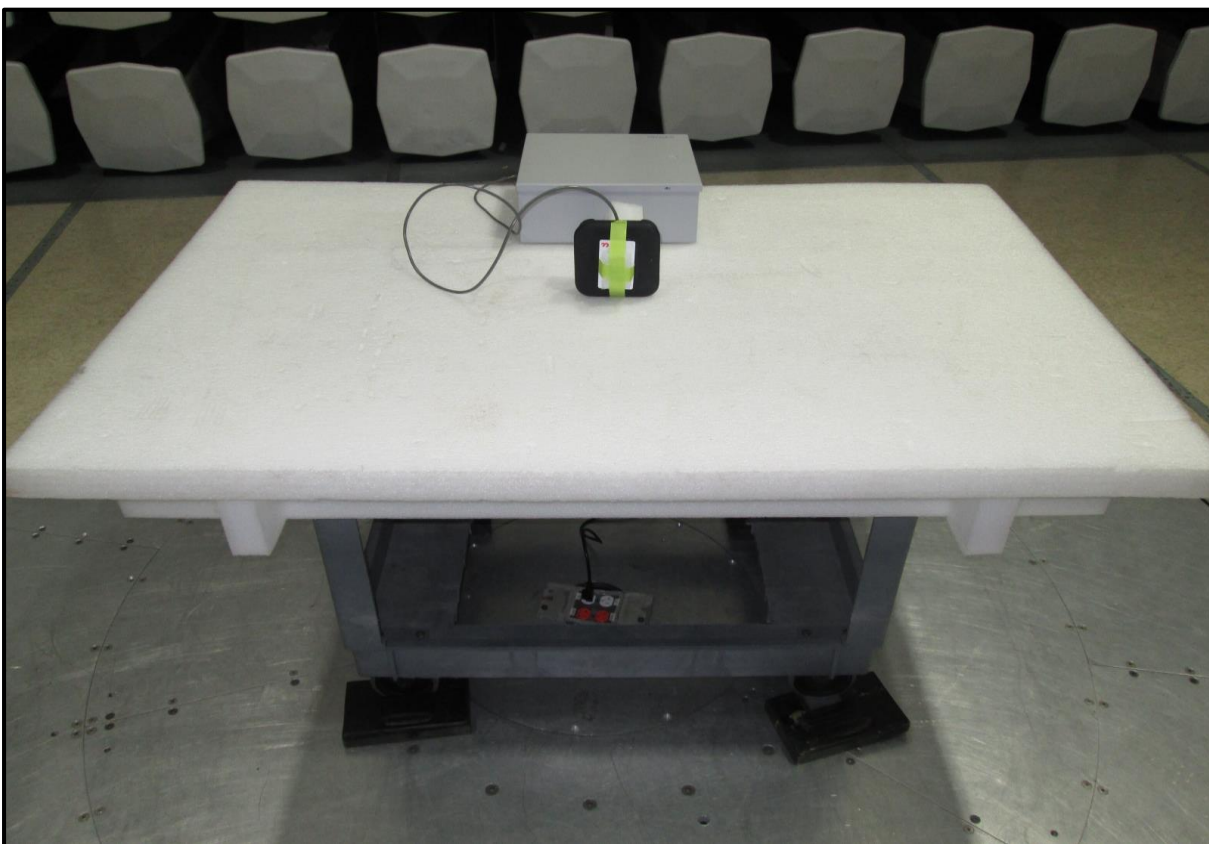
## FIELD STRENGTH OF FUNDAMENTAL





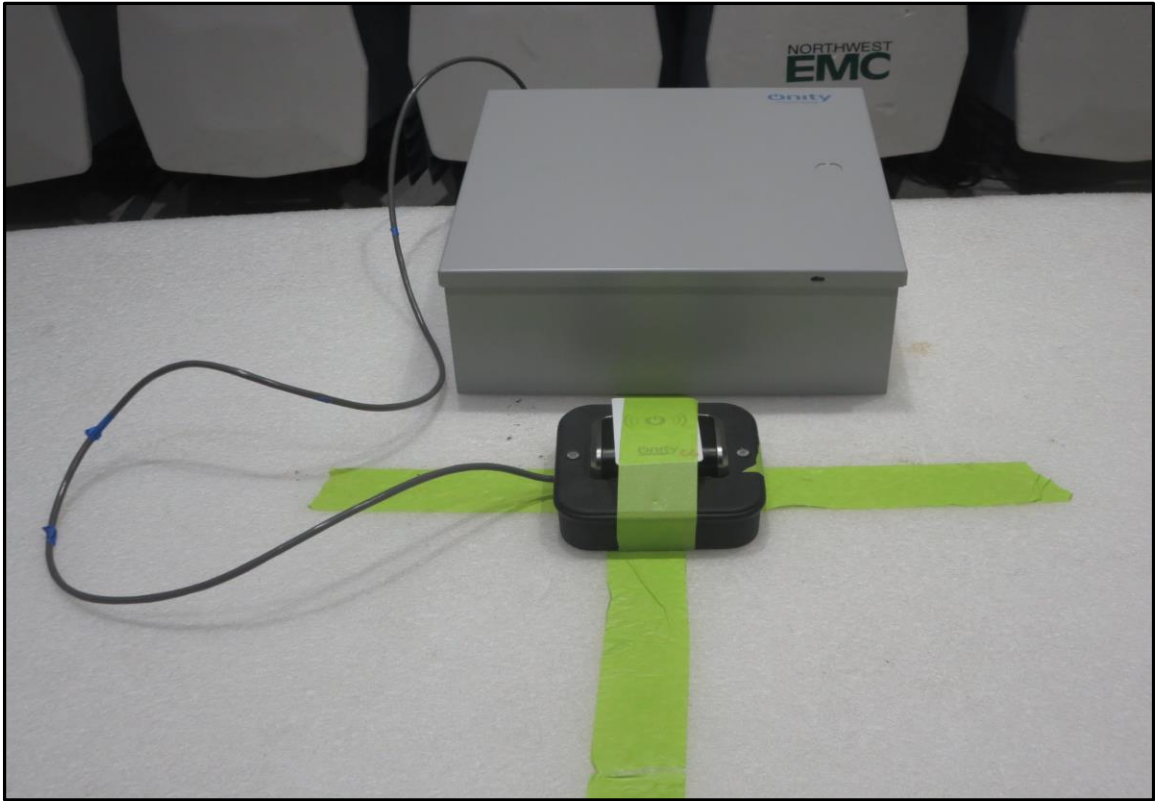
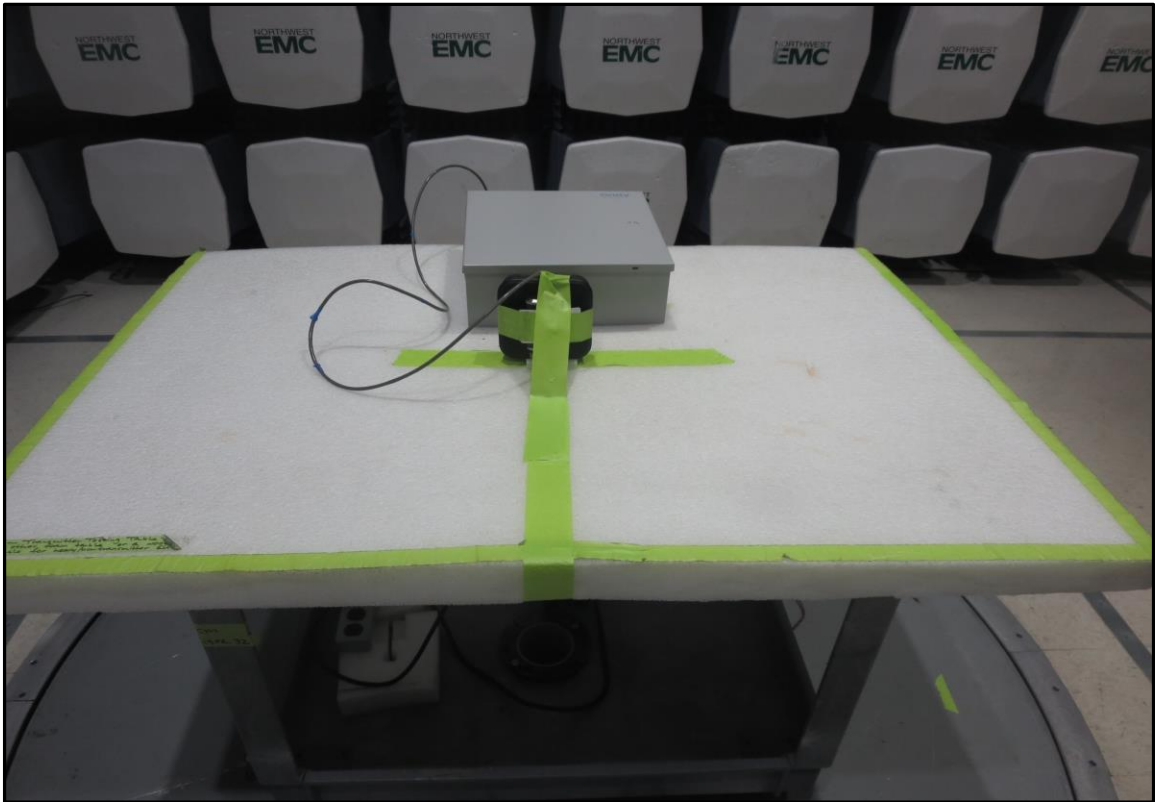




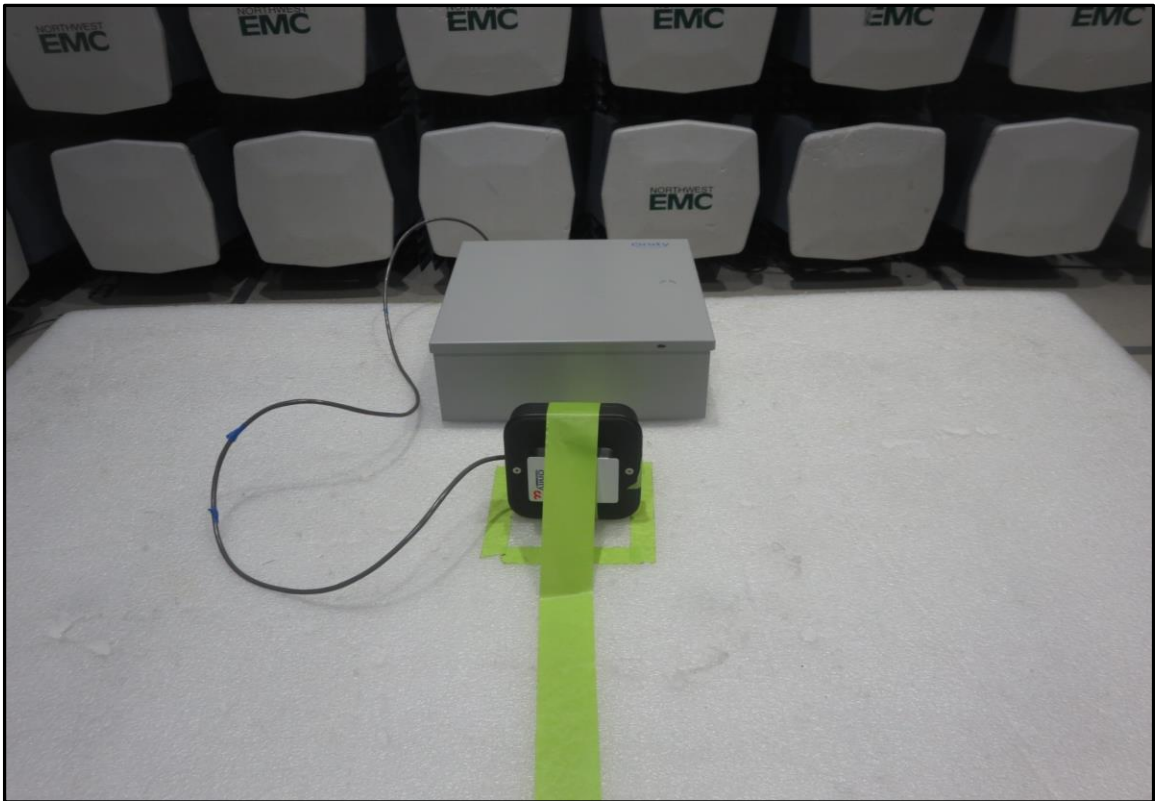
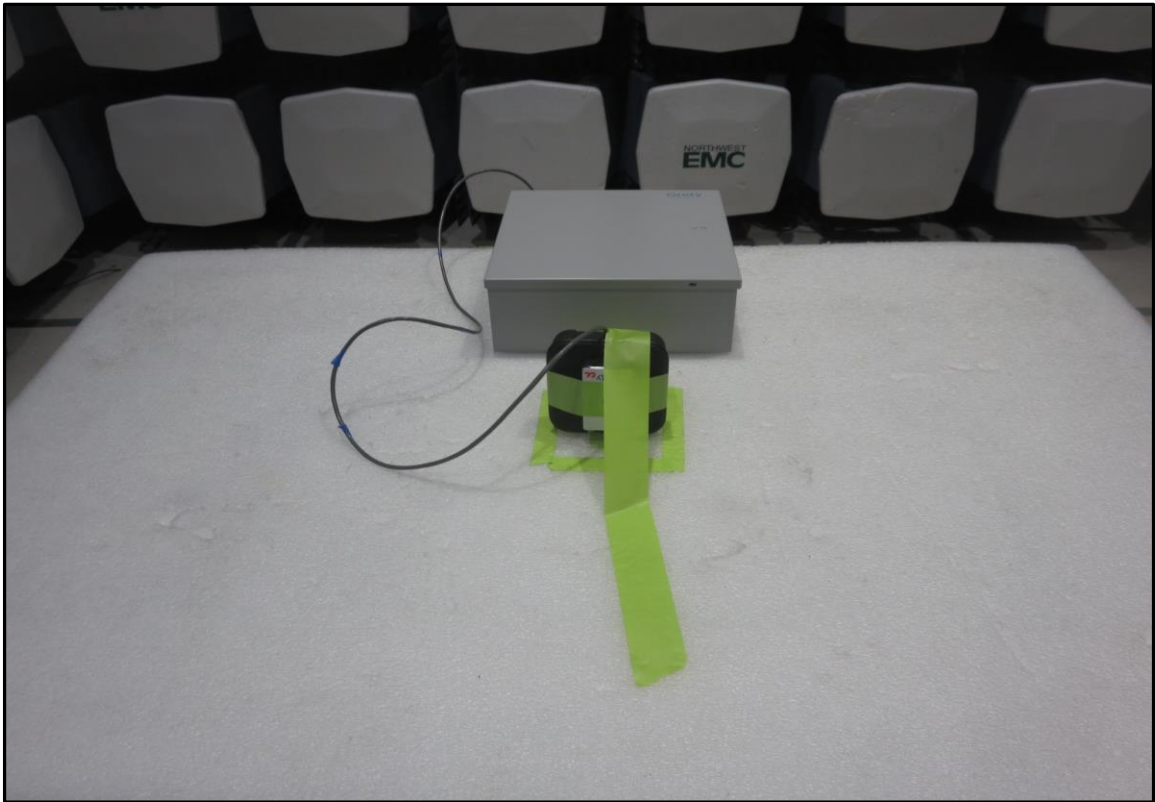




**FIELD STRENGTH OF SPURIOUS  
EMISSIONS GREATER THAN 30MHz**

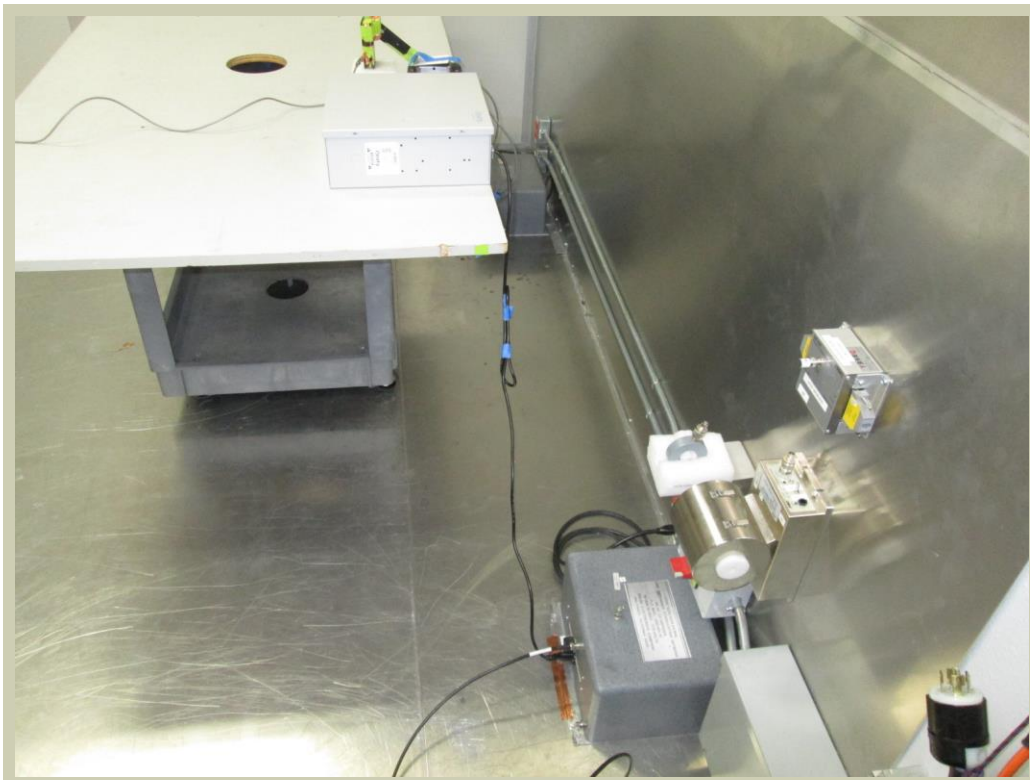
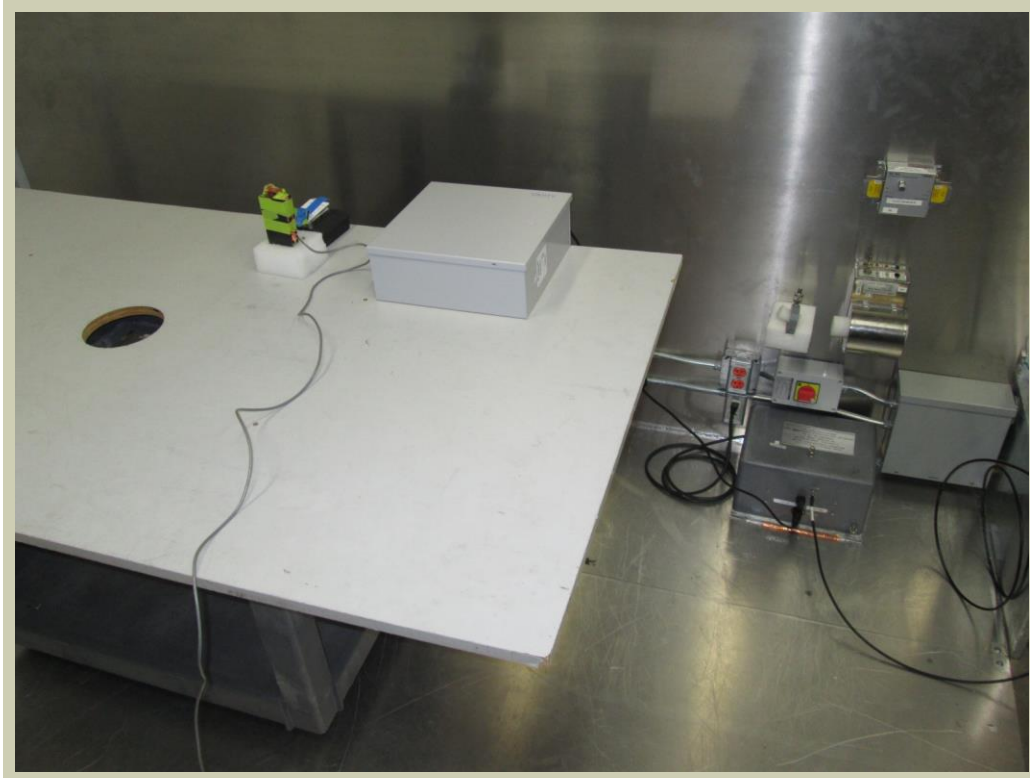


**FIELD STRENGTH OF SPURIOUS  
EMISSIONS GREATER THAN 30MHz**





# AC – POWERLINE CONDUCTED EMISSIONS



# AC – POWERLINE CONDUCTED EMISSIONS

