

Internal Photos

Photo 1



Photo 2

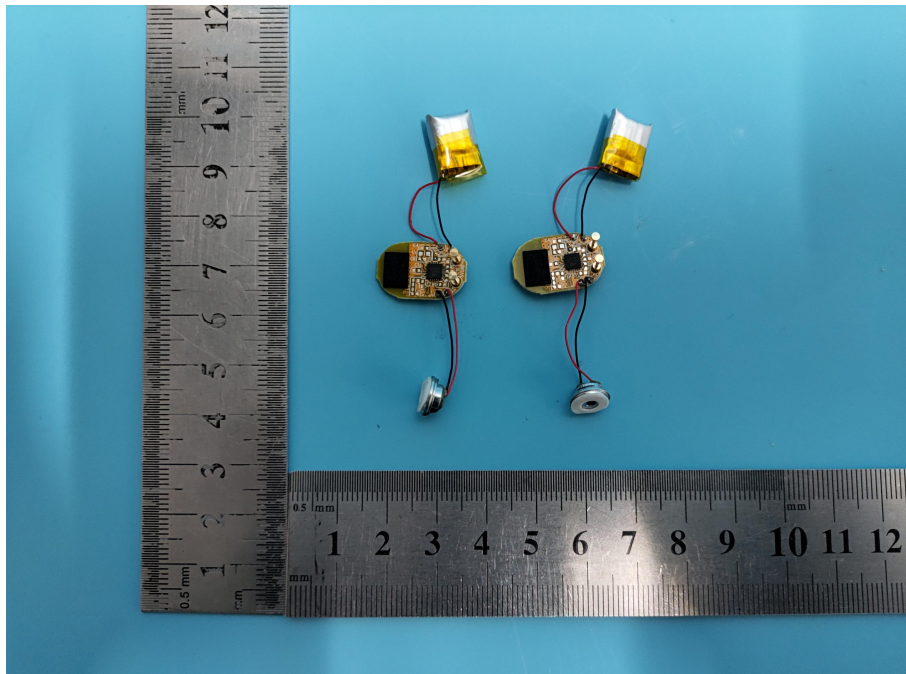


Photo 3

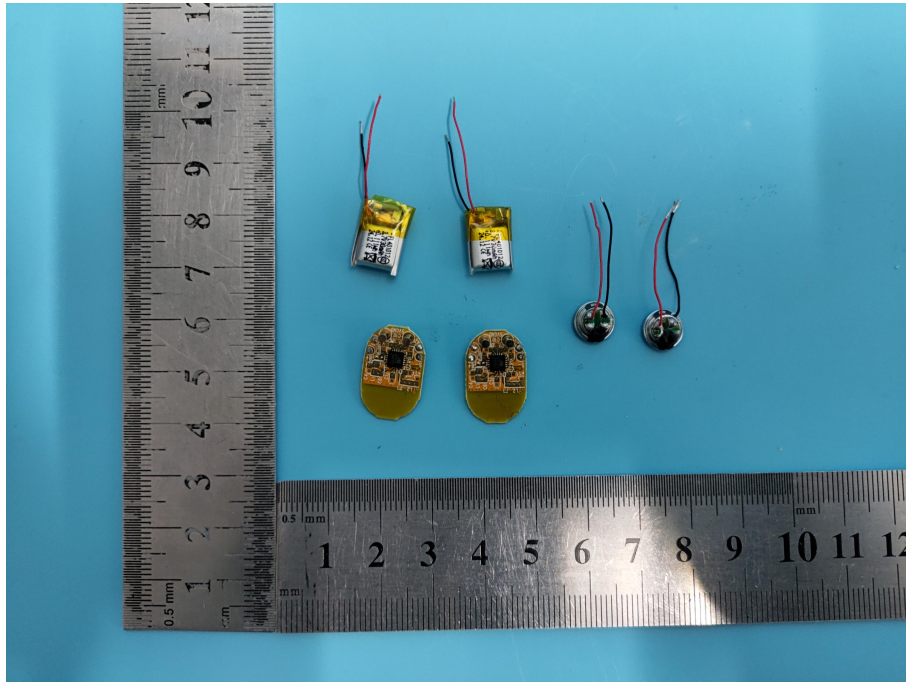


Photo 4

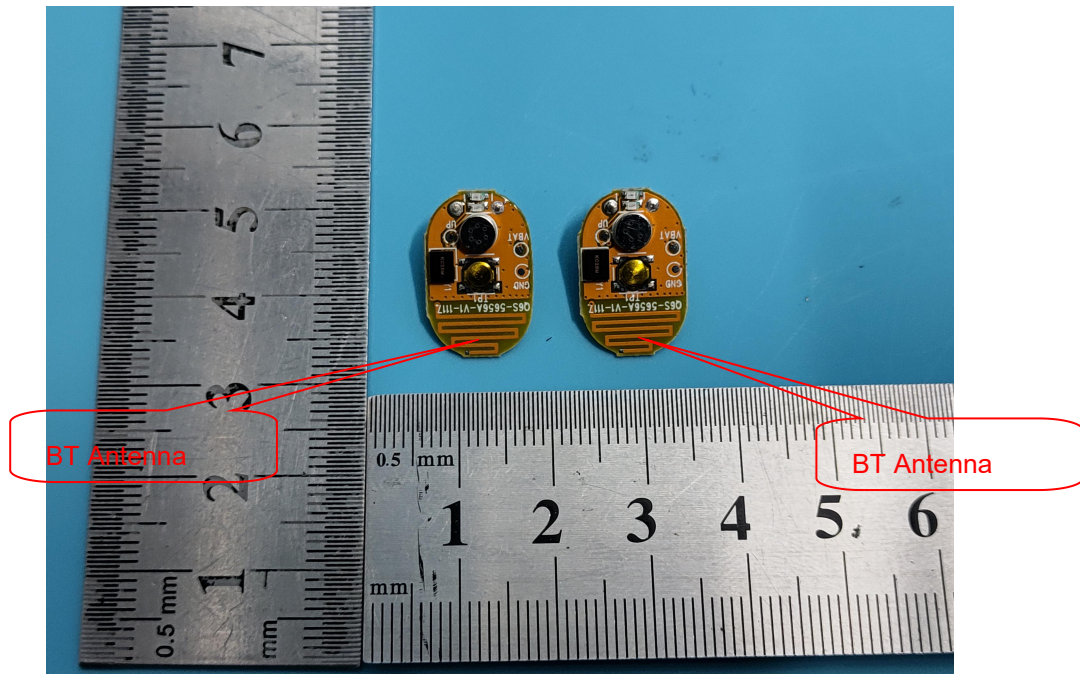


Photo 5

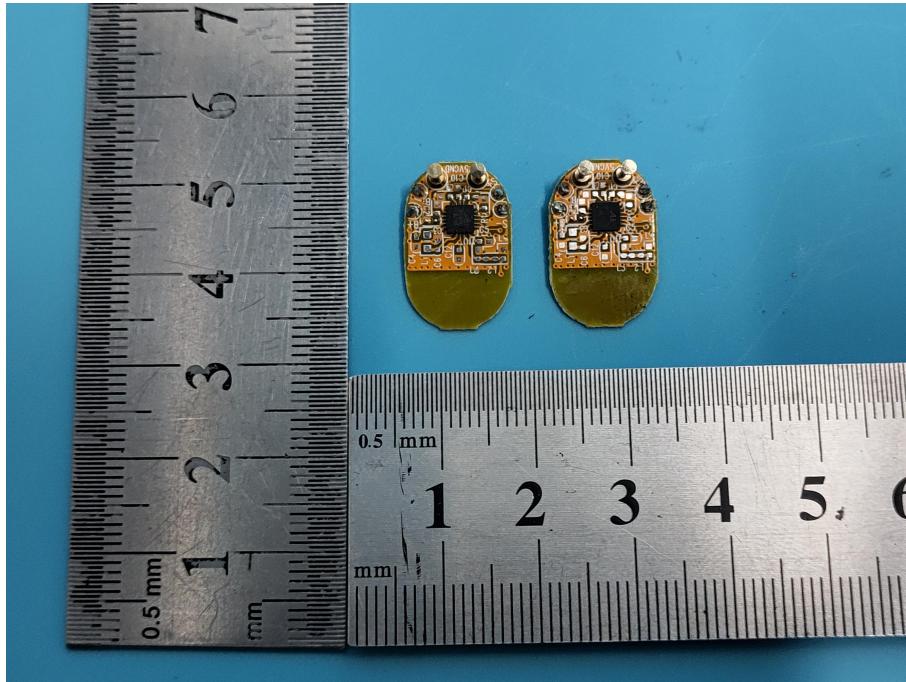
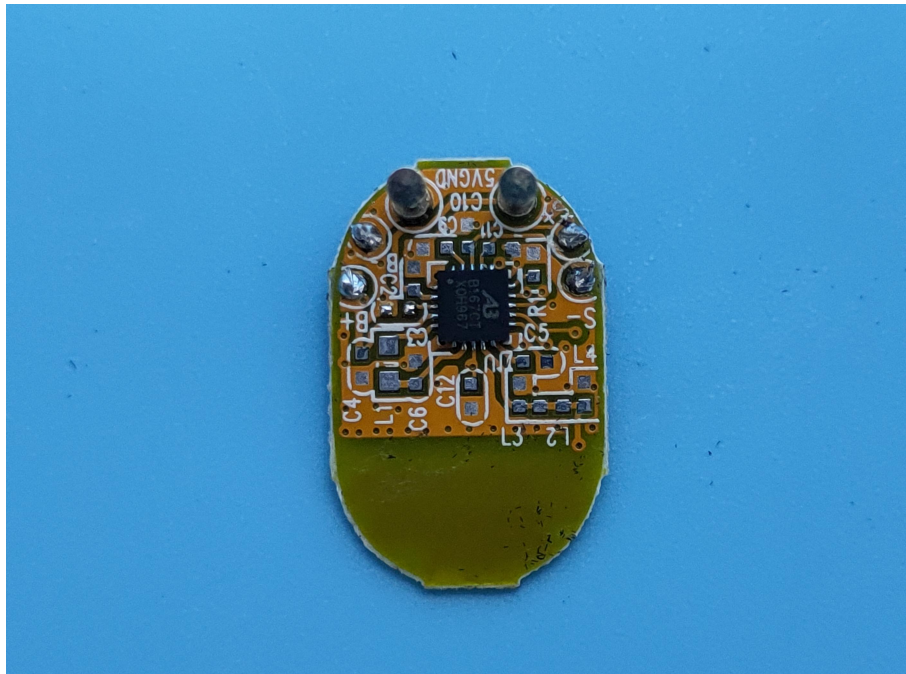


Photo 6



A photograph of a small, oval-shaped electronic component, likely a microcontroller or sensor module, mounted on a blue surface. The component has a gold-colored base with a central black chip and various surface components like capacitors and resistors. Two large, dark, cylindrical components are visible on the left side.

Photo 9



Photo 10

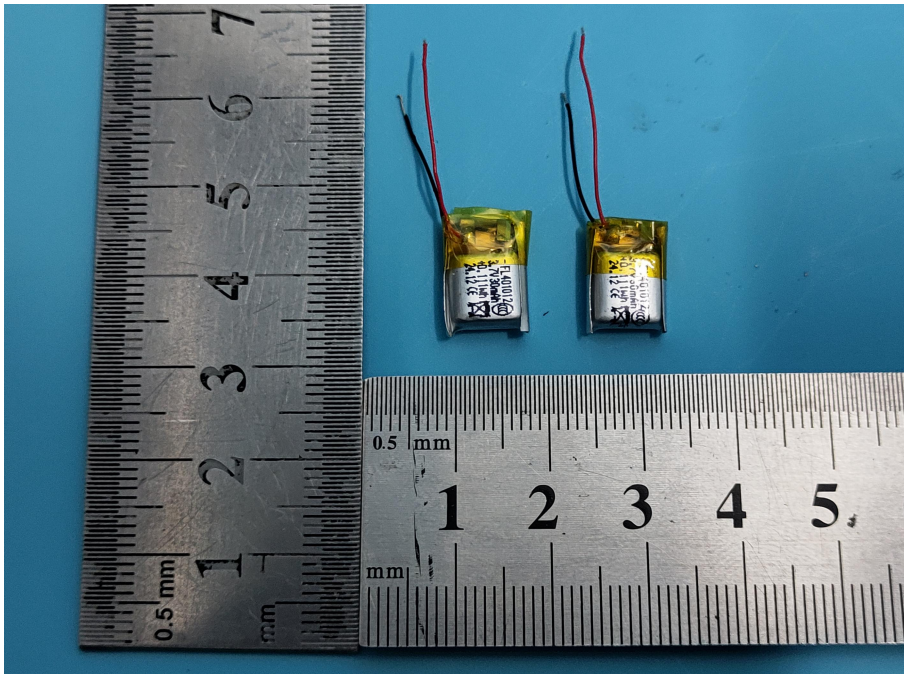
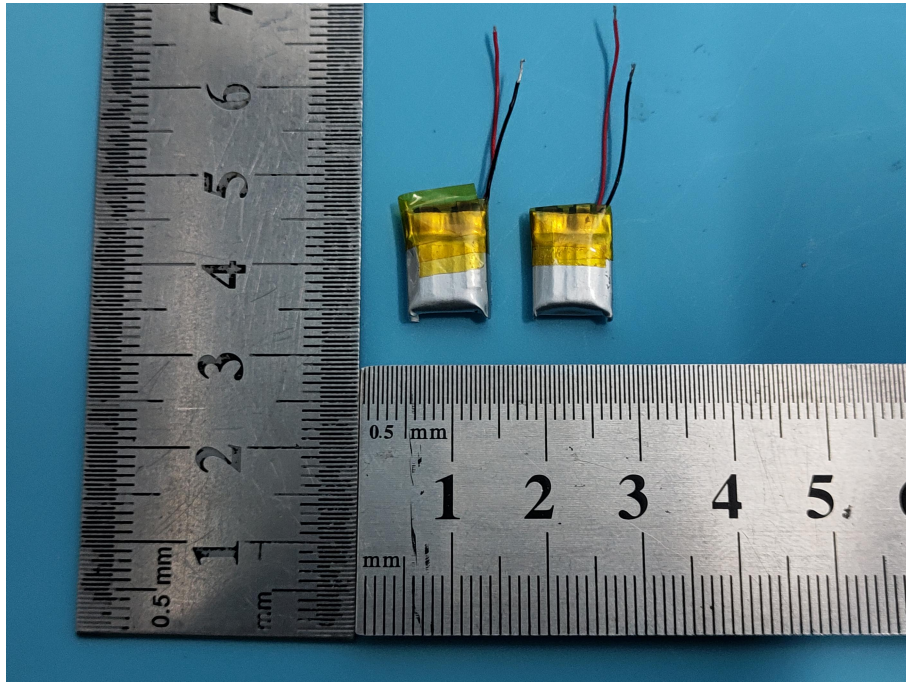


Photo 11



-----End-----