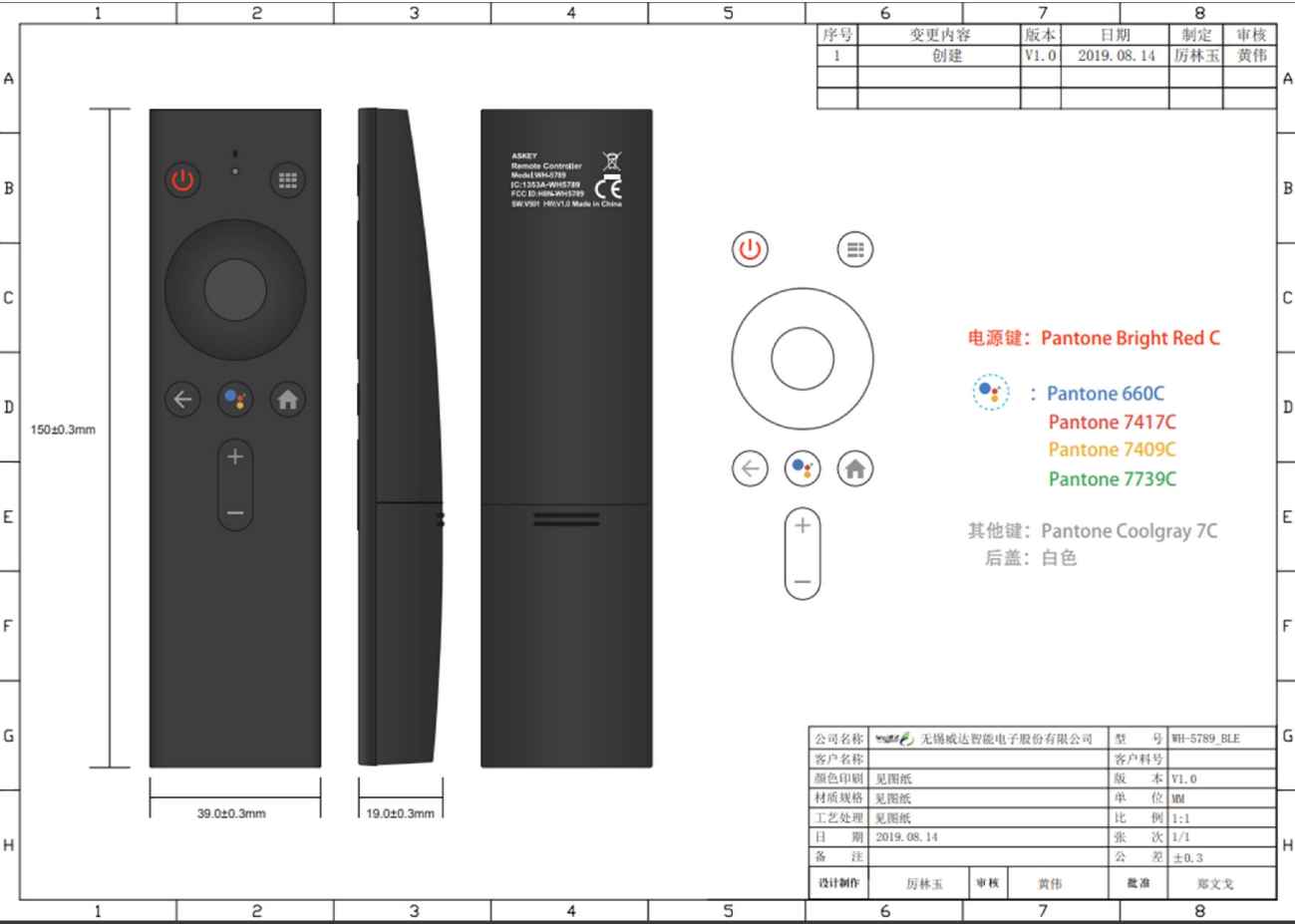


User manual
Remote Controller
WH-5789







RCU picture



RCU sticker



Button description

| Serial number | button | | Features |
|---------------|---|-------|--|
| 1 |  | POWER | Perform sleep/wake on the box |
| 2 | | APPS | APPS |
| 3 | | UP | Move focus/volume up + |
| 4 | | DOWN | Move focus/volume down - |
| 5 | | LEFT | Move focus to / left / rewind / switch to previous channel |
| 6 | | RIGHT | Move focus / fast forward / switch to the next channel |
| 7 | | ENTER | Enter the currently selected focus page / pause play / execute button prompt command |
| 8 |  | BACK | Return to the previous or previous page |
| 9 |  | HOME | Return to the system level home page on any interface |
| 10 |  | VOICE | (It works only after Bluetooth pairing is connected) |
| 11 |  | VOL+ | Increase the volume (global applies, this button has only one operation) |
| 12 |  | VOL- | Decrease the volume (global applies, this button has only one operation) |

| | Usage Page | Usage ID | 备注 |
|----------------|------------|----------|----|
| Power | 0x07 | 0x0066 | |
| Back | 0x0C | 0x0224 | |
| Home | 0x0C | 0x0223 | |
| Voice search | 0x0C | 0x0221 | |
| enter (select) | 0x0C | 0x0041 | |
| Up | 0x0C | 0x0042 | |
| Down | 0x0C | 0x0043 | |
| Left | 0x0C | 0x0044 | |
| Right | 0x0C | 0x0045 | |
| Voice+ | 0x07 | 0x0080 | |
| Voice- | 0x07 | 0x0081 | |
| apps | 0x07 | 0x0076 | |

1. Special requirements for remote control

1) When connected to Bluetooth, the remote control sends the Bluetooth key value;

2) Indicator light: red, each time the button is pressed, the indicator light flashes

Low voltage reminder: When the battery is low, the indicator light flashes quickly. As long as it is still in operation, it will remain in the flashing state. When it is no longer operated by the remote controller, it will flash 5 times or flash 3 seconds, then stop and go out.

3) Support Bluetooth remote control online upgrade, and can trigger upgrade through HOST, the upgrade time is less than 30s

4) Pairing method:

a) Press and hold the "HOME"+"BACK" button for 3 seconds at the same time, the indicator light will flash, and the pairing success indicator will be on for 3 seconds and then off.

b) If the pairing is not successful, if you still press the "HOME"+"BACK" button, the pairing broadcast will be sent all the time so that the user can pair.

c) Press the "HOME" + "BACK" button once to match successfully. Do not clear the pairing and then pair again. After a key pairing is successful, the pairing broadcast can no longer be sent until the next time the button is pressed.

Connection interval<12ms

5) Remote control distance: ≥10m

6) Bluetooth device name: RemoteBO6

7) The remote control's power-on lamp is on for 1 second.

8) The Bluetooth discovery mode has a duration of 2 minutes and the LED flashes at a flashing frequency of 2 Hz (500 ms period)

9) When the voice search is ready, the LED lights up after the ACK is sent from the host. The LED goes out after the host detects the end of the voice, or the LED goes out after the 15 second timeout.

10) GATT battery service

| 电池电压 (伏特) | 百分比(%) |
|-----------|--------|
| >= 3.2 | 100 |
| 3.1 | 97 |
| 3.0 | 95 |
| 2.9 | 92 |
| 2.8 | 81 |
| 2.7 | 66 |
| 2.6 | 50 |
| 2.5 | 42 |
| 2.4 | 27 |
| 2.37 | 20 |
| 2.35 | 15 |
| 2.3 | 7 |
| 2.2 | 0 |
| <2.2 | 0 |

Battery notifications are sent in % (%): 2.2V: 0% 3.2V: 100%

The battery notification is sent only when the battery voltage changes or POR.

2, remote control other requirements

- 1) Matching function requirements: There must be no problem of scanning the Bluetooth device or not matching (including pressing the pairing button continuously for a short time), please verify 50 times to ensure no problem;
- 2) Reconnection function requirements: There must be no problems with the connection failure, including the power failure of the box, the remote control power failure, and the static connection for 2 hours. Please verify 50 times to ensure no problem;
- 3) Anti-interference function requirements: There must be no problem that affects the throughput of the host WIFI. Please ensure that the WIFI throughput of the host is normal when the remote controller is connected.
- 4) Performance requirements: Requires support $\leq 10\text{m}$, there must be no problems with voice calls, loss, and button presses, lost codes or keys on the remote control;
- 5) Power consumption requirements: The remote control can be used for at least 6 months.

Voice: 16Khz voice sample with 16-bit sampling, press the voice button (color button) to start recording. The remote controller stops recording after receiving the stop recording command from the voice engine.

The box software can control the MIC to be turned on and off.

Support remote control MIC and other MIC (such as the recording button on the phone apk) alternate, switch voice input.

FCC Compliance statement

This equipment has been tested and found to comply with the limits for a Class B digital device pursuant to Part 15 of the FCC Rules. These limits are designed to provide reasonable protection against harmful Interference in residential installations. This equipment generates, uses, and can radiate radio frequency energy and, if not installed and used in accordance with the instructions, may cause harmful interference to radio communications. However, there is no guarantee that a particular disturbance will not occur. If this equipment does cause harmful interference to radio or television reception, this can be determined by turning the equipment off and on. Encourage the user to attempt to correct the interference by one or more of the following:

- Readjust or place the receiving antenna.
- Increase the distance between the device and the receiver.
- Connect the device to a socket on a different circuit than the receiver.
- Consult the dealer or an experienced radio/TV technician for help.

This device complies with Part 15 of the FCC Rules. The operation meets the following two conditions:

- 1) This device does not cause harmful interference.
- 2) This device must accept any interference received, including undesired operation that may cause interference.

Any changes or modifications not expressly approved by the party responsible for compliance may void the user's authority to operate the equipment.

Note: The manufacturer is not responsible for modifying this device for any unauthorized radio or television interference. These modifications may void the user's authority to operate the device.

FCC RF radiation exposure statement

This device complies with FCC RF radiation exposure limits for uncontrolled environments.

This device and its antenna must not be placed or operated with any other antenna.

Canadian Compliance Statement

This device complies with Industry Canada license-free RSS. The operation is subject to the following two restrictions:

- (1) This device does not cause interference;
- (2) This device must accept any interference, including interference that may cause undesired operation.

Le présent appareil est conforme aux CNR d'Industrie Canada applicables aux appareils radio exempts de licence. L'exploitation est autorisée aux deux conditions suivantes:

- (1) l'appareil ne doit pas produire de brouillage;
- (2) l'utilisateur de l'appareil doit accepter tout brouillage radioélectrique subi, même si le brouillage est susceptible d'en compromettre le fonctionnement.

Radiation exposure statement:

This device complies with IC radiation exposure limits established for uncontrolled environments.

Déclaration d'exposition aux radiations:

Cet équipement est conforme aux limites d'exposition aux rayonnements IC établies pour un environnement non contrôlé.