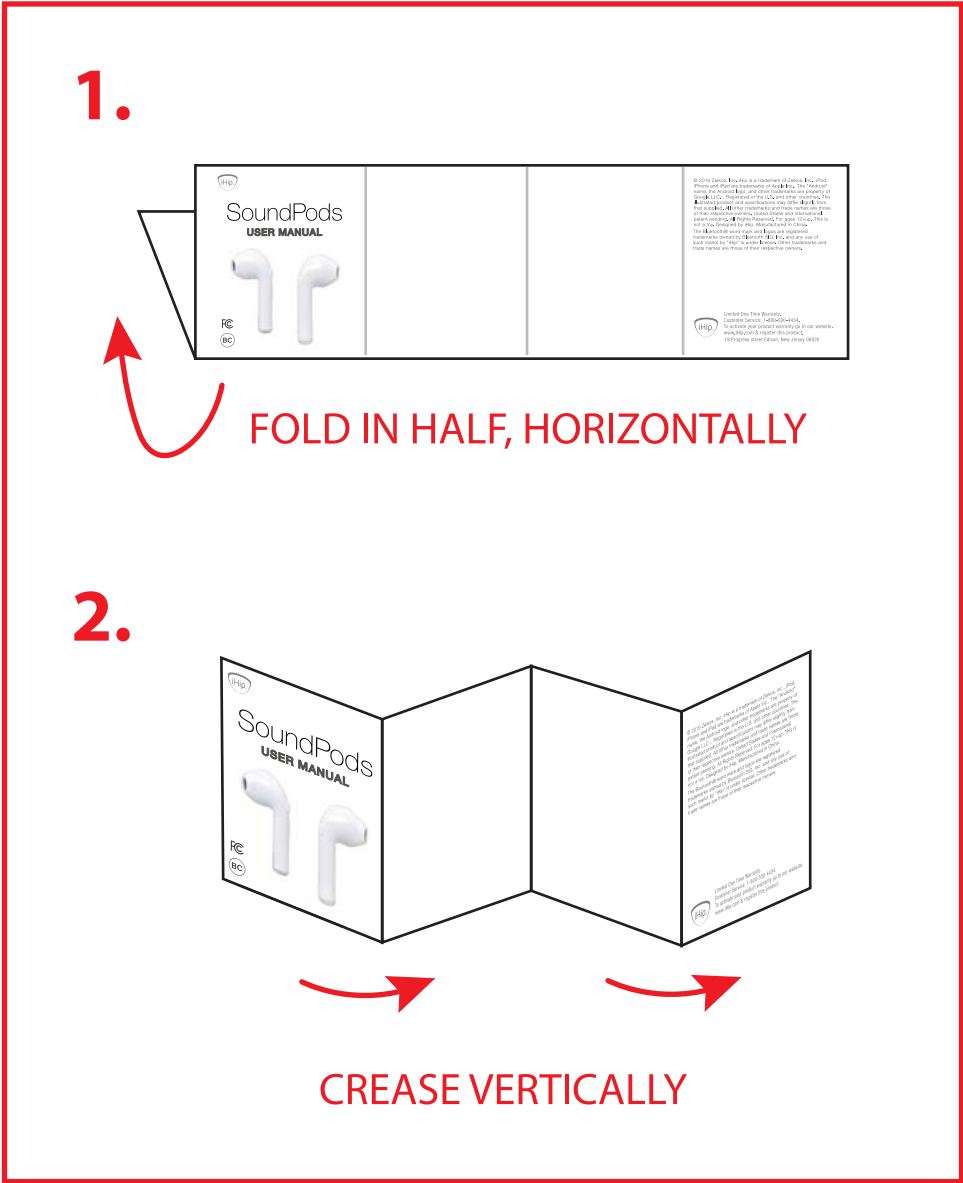


SOUNDPODS INSTRUCTION MANUAL

DO NOT PRINT THIS LAYER

PRINT BACK TO BACK

FOLDING INSTRUCTIONS



INSIDE

PAIRING BOTH EARBUDS

1 Turn on both earbuds

Take both earbuds out of the case. The earbuds will turn on and pair to each other automatically.

2 Pair the earbuds with your device

Turn on Bluetooth on your device and choose "SOUNDPODS" from your list to connect. When the LED slowly flashes blue, they are paired successfully. There will be a reminding voice saying "connected."

Bluetooth usage:

1. Making phone calls:
Be sure the earbuds are connected with your mobile phone. Once connected you can make phone calls. When making calls, both earbuds will be working if you're using both earbuds.
To answer a call: short press the power button one time.
To reject calls: long press the power button two seconds.
Dial the last number by a quick press to the Power button twice when the earbuds are in music mode.

2. Listening to music:
Be sure the earbuds are connected with your mobile phone. You can listen to music on your music list.
Short press the Power button to stop the music; to replay press again.

3. Power off:
Long press the Power button until the LED red light is no longer red, then the Bluetooth device is turned off. The earbuds turn off automatically when earbud is away from Bluetooth device for a duration of over 5 minutes.

4. Low battery
When battery is low, there will be a reminding voice saying "Battery Low"

Important information

The earbud(s) will automatically power on when taken out from the charging case.

Both earbuds will automatically pair to each other when turned on.

The earbuds will power off if they don't connect to any device within 5 minutes. If the earbuds turn off, turn the earbud(s) on again by:

a) putting the earbuds back into the charging case and then take it out to power on.

b) manually turn it on by long pressing the multi-function button on the earbuds.

PAIRING ONE EARBUD

1 Turn on the earbud

Take one earbud out of the case. The earbud will turn on automatically.

2 Pair the earbud with your device

Turn on Bluetooth on your device and choose "SOUNDPODS" from your list to connect. When the LED slowly flashes blue, it's paired successfully. There will be a reminding voice saying "connected."

Charging:

1. Charge your SoundPods case:

- Plug in the charging case using the Micro USB cable included.
- While the case battery is charging, the case LED indicator will be flashing red.
- When the case is fully charged, the light then will change to solid red.

2. Charge your SoundPods:

- Unplug the charging case from the micro USB cable.
- Place the earbuds inside of the charged case.
- Turn on the charging case by pressing the case power button once. The LED indicator will be solid blue.
- A solid red light on the earbuds will indicate that the earbuds are charging.
- A solid blue light on the earbuds will indicate that the earbuds are fully charged.

NOTE: The case must be charged in order to charge the earbuds. The earbuds will not charge while the case is charging. The earbuds and case do not charge simultaneously.

OUTSIDE

Front

iHip

SoundPods

USER MANUAL

FC

BC

Specifications:

Bluetooth version: V5.0
Bluetooth range: 10 meters
Bluetooth frequency: 2.4GHz
Battery Capacity:
Earbud: 40mAh rechargeable Li-ion battery
Charging dock: 400mAh rechargeable Li-ion battery
Standby time: up to 24 hours
USB cable Length: 50cm

Charging Case Included

LED Indicator

Power Button

Attention:

1. Handle with care. Do not throw, sit on, or store the SoundPods under heavy objects. Keep away from high temperatures and environments with high humidity. Store in an environment with a temperature between -10°C ~ 60°C.

2. Keep away from high frequency transmitting equipment such as WIFI routers which may cause sound interference or disconnection.

3. Please keep the earbuds within a 10m (33 ft) range of the connected device.

4. This product is a compatible with both iOS® and Android™ devices.

FCC Statement:

This equipment has been tested and found to comply with the limits for a Class B digital device, pursuant to part 15 of the FCC Rules. These limits are designed to provide reasonable protection against harmful interference in a residential installation. This equipment generates, uses and can radiate radio frequency energy and, if not installed and used in accordance with the instructions, may cause harmful interference to radio communications. However, there is no guarantee that interference will not occur in a particular installation. If this equipment does cause harmful interference to radio or television reception, which can be determined by turning the equipment off and on, the user is encouraged to try to correct the interference by one or more of the following measures:

- Reorient or relocate the receiving antenna.
- Increase the separation between the equipment and receiver.

Back

1 Dust Net

2 Multi-Function Button

3 LED Indicator

4 Charging Port

• built-in microphone
• high-quality sound with extra bass
• 2 hours of listening on a one-time charge
• connect wirelessly to iOS & Android devices
• ergonomic design for a comfortable fit in your ear

Caution: Any changes or modifications to this device not explicitly approved by manufacturer could void your authority to operate this equipment.

This device complies with part 15 of the FCC Rules. Operation is subject to the following two conditions: (1) This device may not cause harmful interference, and (2) this device must accept any interference received, including interference that may cause undesired operation.

The device has been evaluated to meet general RF exposure requirement. The device can be used in portable exposure condition without restriction.

© 2019 Zeikos, Inc. iHip is a trademark of Zeikos, Inc., iPod, iPhone and iPad are trademarks of Apple Inc., The "Android" name, the Android logo, and other trademarks are property of Google LLC. Registered in the U.S. and other countries. The illustrated product and specifications may differ slightly from that supplied. All other trademarks and trade names are those of their respective owners. United States and international patent pending. All Rights Reserved. For ages 12+ up. This is not a toy. Designed by iHip. Manufactured in China.

The Bluetooth® word mark and logos are registered trademarks owned by Bluetooth SIG, Inc. and any use of such marks by "iHip" is under license. Other trademarks and trade names are those of their respective owners.

Limited One Time Warranty.
To activate your product warranty go to our website, www.iHip.com & register this product.

19 Progress St
Edison, NJ 08820
www.iHip.com

Find us on Facebook.
Keyword: iHip: Portable Entertainment

SOUND of your Life™