

System Check_H3500

Frequency: 3500 MHz; Duty Cycle: 1:1; Room Ambient Temperature: 23.0°C; Liquid Temperature: 22.0°C

Medium parameters used: $f = 3500$ MHz; $\sigma = 2.833$ S/m; $\epsilon_r = 36.494$; $\rho = 1000$ kg/m³

DASY5 Configuration:

- Area Scan Setting: Find Secondary Maximum Within: 2.0 dB and with a peak SAR value greater than 0.0012W/kg
- Electronics: DAE4 Sn1289; Calibrated: 2023/6/16
- Probe: EX3DV4 - SN7678; ConvF(7.45, 7.15, 7.14) @ 3500 MHz; Calibrated: 2023/8/17
- Sensor-Surface: 1.4mm (Mechanical Surface Detection (Locations From Previous Scan Used)), Sensor-Surface: 1.4mm (Mechanical Surface Detection)
- Phantom: ELI V8.0 (20deg probe tilt); Type: QD OVA 004 Ax; Serial: 2149

Configuration/Pin=100mW/Area Scan (10x10x1):

Measurement grid: dx=10mm, dy=10mm

Maximum value of SAR (measured) = 11.8 W/kg

Configuration/Pin=100mW/Zoom Scan (7x7x12)/Cube 0:

Measurement grid: dx=4mm, dy=4mm, dz=2mm

Reference Value = 58.35 V/m; Power Drift = 0.07 dB

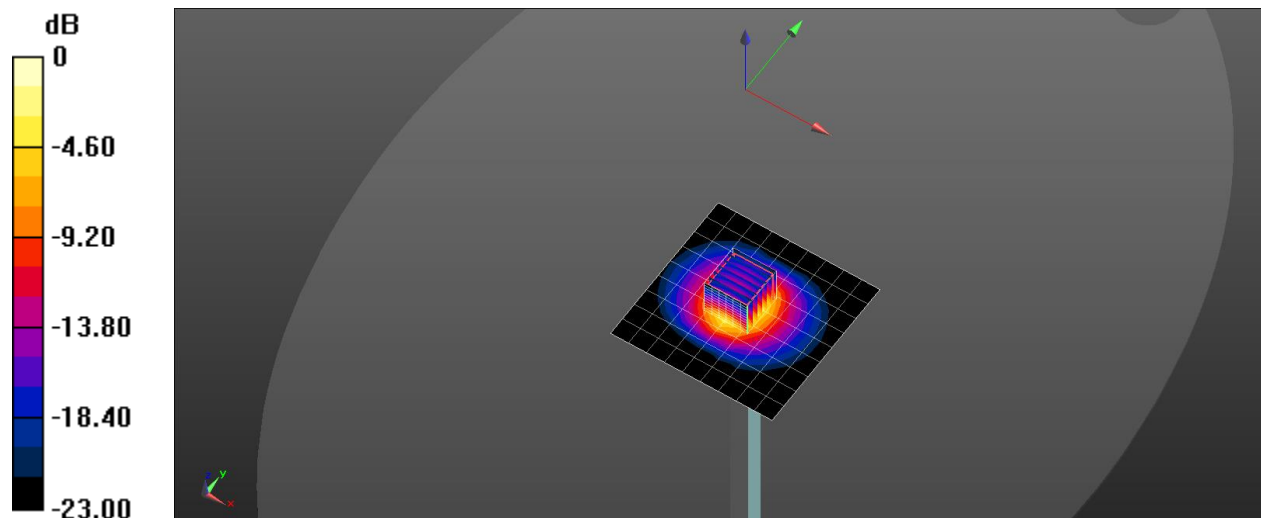
Peak SAR (extrapolated) = 16.3 W/kg

SAR(1 g) = 6.45 W/kg; SAR(10 g) = 2.48 W/kg

Smallest distance from peaks to all points 3 dB below = 8.6 mm

Ratio of SAR at M2 to SAR at M1 = 68.1%

Maximum value of SAR (measured) = 12.4 W/kg



0 dB = 12.4 W/kg = 10.93 dBW/kg

System Check_H3700

Frequency: 3700 MHz; Duty Cycle: 1:1; Room Ambient Temperature: 23.0°C; Liquid Temperature: 22.0°C

Medium parameters used: $f = 3700$ MHz; $\sigma = 3.063$ S/m; $\epsilon_r = 35.901$; $\rho = 1000$ kg/m³

DASY5 Configuration:

- Area Scan Setting: Find Secondary Maximum Within: 2.0 dB and with a peak SAR value greater than 0.0012W/kg
- Electronics: DAE4 Sn1289; Calibrated: 2023/6/16
- Probe: EX3DV4 - SN7678; ConvF(7.58, 7.25, 7.22) @ 3700 MHz; Calibrated: 2023/8/17
- Sensor-Surface: 1.4mm (Mechanical Surface Detection (Locations From Previous Scan Used)), Sensor-Surface: 1.4mm (Mechanical Surface Detection)
- Phantom: ELI V8.0 (20deg probe tilt); Type: QD OVA 004 Ax; Serial: 2149

Configuration/Pin=100mW/Area Scan (10x10x1):

Measurement grid: dx=10mm, dy=10mm

Maximum value of SAR (measured) = 12.6 W/kg

Configuration/Pin=100mW/Zoom Scan (7x7x12)/Cube 0:

Measurement grid: dx=4mm, dy=4mm, dz=2mm

Reference Value = 57.99 V/m; Power Drift = 0.08 dB

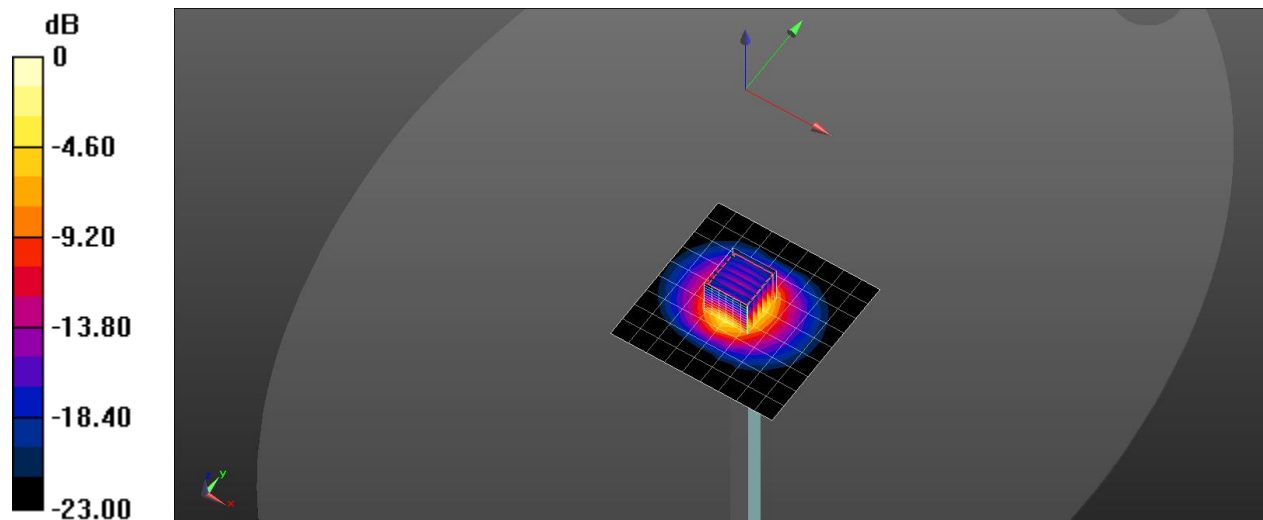
Peak SAR (extrapolated) = 17.4 W/kg

SAR(1 g) = 6.89 W/kg; SAR(10 g) = 2.65 W/kg

Smallest distance from peaks to all points 3 dB below = 8.6 mm

Ratio of SAR at M2 to SAR at M1 = 68.1%

Maximum value of SAR (measured) = 13.3 W/kg



0 dB = 13.3 W/kg = 11.24 dBW/kg