

尺寸:55*70mm
材质:80g 书写纸
印艺:双面印刷/ 单色印刷 /风琴折页
公差:±1mm
印刷偏差:≤0.5mm
套印偏差:≤0.35mm
符合ROHS标准

封面

TECNO

DEEP BASS
ENJOYMENT

User Manual | Model: **BD04 Air**

TWS Earphone
Model: BD04 Air
Hereby, TECNO MOBILE LIMITED
declares that this TWS Earphone is in compliance with the
essential requirements and other relevant provisions of
directive 2014/53/EU.

PACKAGE CONTENT
2* Buds 4 Air Bluetooth earphones
1* Buds 4 Air charging case
1* Charging cable
1* User Manual
2* Large ear tip
2* Medium ear tip (In the charging case)
2* Small ear tip

S
M
L

Ear Tip

Bluetooth Earphones

Charging Case

User Manual

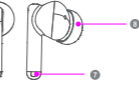
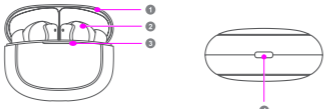
Charging cable

Ear Tip

— 1 —

PRODUCT OVERVIEW

1. Charging case
2. Earphones
3. Charging case indicator light
4. Charging port
5. Earphone indicator light
6. Earphone touch area
7. Earphone charging contacts
8. Ear tip



— 2 —

BASIC FEATURES OF PRODUCT

Product Name	TECNO Buds 4 Air
Charging Cable	Type-C
Earphone battery capacity	35mAh*2
Charging box battery capacity	320mAh
Charging Voltage/Current	5V/1A 5V/0.1A
Music Playing Time	6H+16H
Standby Time	Approx 70H
Transmission range	≥ 10m
Bluetooth Name	TECNO Buds 4 Air
Operating Temperature	0℃-45℃
Storage Temperature	-20℃ ~ 60℃
Time for full Charging the Earbuds	1.5h
Time for full Charging the Case	Approx 2h

EARPHONE INDICATOR LIGHT

Earphone Status	Indicator light status
Power On	White light on for 1S
Power Off	Blue light on for 1S
Charging box low battery	The white light of the charging case flashes quickly for about 4 times while put the earphones back to case.

— 3 —

CHARGE



POWER ON/OFF

Power on

The earphones will be power on automatically while being taken out



Power off

The earphones will be power off automatically while put the earphones into the charging case.



— 4 —

CONNECT WITH SMART DEVICES
Connect smart devices in dual earphones mode

- When first using,open the charging case and take out earphones, the earphones will enter into TWS pairing mode(when power on, the white light flashes 1S and then flash quickly on both earphones)
- The L & R earphones will connect with each other successfully in 3S, then enter into pairing mode, the master earphone flashes blue and white light alternatively, and the slave earphone light goes off.
- Please search and connect with the " TECNO Buds 4 Air " , and both of the earphones light will go off when pairing successfully



— 5 —

Download the Welife App
for More Features

Scan the QR code to quickly download the Welife app for preferred sound effects, artistic connection pop-ups, customer support, and more smart audio features to discover. Turn on the earbuds, then open the app and tap "Add Device" to add the earbuds.

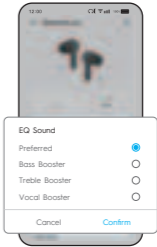


Multiple Sound Effects to Enjoy

Support Bass Booster, Treble Booster, Vocal Booster, etc. Choose the one that suits you best.

Quick Connection Pop-up:

It supports auto pop-ups for earbuds connection reminder, and also custom pop-up themes. It is supported by multiple phone brands. For TECNO phones, customization of pop-up themes is available for HiOS14+ devices.



— 6 —

WARRANTY TERMS&CONDITIONS

Please feel free to contact us if you run into any problems. This warranty covers only original TECNO products. It does not apply to normal wear and tear, or any effects or damage caused by misuse of the product. The warranty is for primary products only. Additional or free of cost products are not covered under warranty.

TECNO MOBILE LIMITED

TM and Copyright © 2010-2022 TECNO Corporation. All rights reserved. Other product and company names mentioned herein may be trademarks or trade names of their respective owners. Specifications are subject to change without notice. Model names and the availability of particular products may vary by region.

www.tecno-mobile.com
service.us@tecno-mobile.com



More Products Multiple Language Download Welife App
Customize Your Earbuds Preferred Sounds Effects
FCC ID: 2ADYY-BD04 Air
MADE IN CHINA

CUSTOMER SERVICE



Caricare provides service
WARRANTY CERTIFICATE

Name:	
Address:	
Telephone number:	
Date of purchase: (dd/mm/yy)	
Store name:	
S/N:	

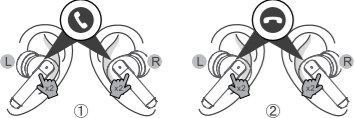
— 14 —

TOUCH BUTTON OPERATION

Long Press Tap

CALL MODE

L/R earphone operation



VOLUME+/VOLUME-

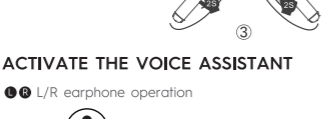
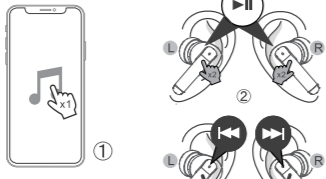
L/R earphone operation



— 7 —

MUSIC MODE

L/R earphone operation



ACTIVATE THE VOICE ASSISTANT

L/R earphone operation



— 8 —

FCC Caution

Labeling requirements.

This device complies with Part 15 of the FCC Rules. Operation is subject to the following two conditions:
(1) This device may not cause harmful interference.
(2) This device must accept any interference received, including interference that may cause undesired operation.

Information to user.

Any changes or modifications not expressly approved by the party responsible for compliance could void the user's authority to operate the equipment.

Information to the user.

Note: This equipment has been tested and found to comply with the limits for a Class B digital device, pursuant to Part 15 of the FCC Rules. These limits are designed to provide reasonable protection against harmful interference in a residential installation. This equipment generates uses and can radiate radio frequency energy and, if not installed and used in accordance with the instructions, may cause harmful interference to radio communications. However, there is no guarantee that interference will not occur in a particular installation.

If this equipment does cause harmful interference to radio or television reception, which can be determined by turning the equipment off and on, the user is encouraged to try to correct the interference by one or more of the following measures:

- Reorient or relocate the receiving antenna.
- Increase the separation between the equipment and receiver.
- Connect the equipment into an outlet on a circuit different from that to which the receiver is connected.
- Consult the dealer or an experienced radio/TV technician for help.

Note: This device and its antenna(s) must not be co-located or operation in conjunction with any other antenna or transmitter.
RF Exposure Statement
The device has been evaluated to meet general RF exposure requirement. The device can be used in portable exposure condition without restriction.

— 9 —

EU DECLARATION OF CONFORMITY

in accordance with

Annex VI of Directive 2014/53/EU of the European Parliament and of the Council

1.For the following Radio equipment:

Model: **BD04 Air**

Product: TWS Earphone

Trade name or Brand: TECNO

Software / Hardware number: V1.0

2. Name and address of the manufacturer or his authorized representative:

Manufacturer: TECNO MOBILE LIMITED

Address: FLAT N 16/F BLOCK B UNIVERSAL INDUSTRIAL CENTRE

19-25 SHAN MEI STREET FOTAN NT HONGKONG

3. This declaration of conformity is issued under the sole responsibility of the Manufacturer.

4. Object of the declaration (identification of the radio equipment allowing traceability; it may include a colour image of sufficient clarity where necessary for the identification of the radio equipment):

5. The object of the declaration described above is in conformity with the relevant Union harmonization legislation: Directive 2014/53/EU (RED)

6.References to the relevant harmonised standards used or references to the other technical specifications in relation to which conformity is declared:

Article 3.1a Health:

EN 62479: 2010

EN 50665: 2017

Article 3.1a Electrical Safety:

EN62368-1: 2014+A11:2017

EN IEC 62368-1: 2020+A11:2020

— 10 —

Article 3.1b:
ETSI EN 301 489-1 V22.3 (2019-11)
ETSI EN 301 489-17 V32.4 (2020-09)

Article 3.2:
ETSI EN 300 328 V22.2 (2019-07)

7. Notified Body Name: Eurofins Electrical and Electronic Testing

NA, Inc.

Notified Body Number: 0980

Notified Body Assessment Performed: Module B/C on Article 3.1a,

3.1b, 3.2

Technical File Identification Number: N/A

8. Where applicable, description of accessories and components, including software, which allow the radio equipment to operate as intended and covered by the EU declaration of conformity: User instructions are provided in the User Manual. The Software and Hardware versions are specified above.

9. Additional information:
Referring to Article 10.2 of the Directive, this equipment is so constructed that it can be operated in all Member States, without infringing applicable requirements on the use of radio spectrum. Referring to Article 10.10 of the Directive, there are no restrictions on putting this equipment into service or of requirements for authorisation of use. Please refer to the User Manual for details.

On behalf of:

Manufacturer: TECNO MOBILE LIMITED

Address: FLAT N 16/F BLOCK B UNIVERSAL INDUSTRIAL CENTRE

19-25 SHAN MEI STREET FOTAN NT HONGKONG

— 11 —

(place and date of issue): Shenzhen, 2024-08-30
(name, function): YangDaozhuang/ Manager

(signature):
(Name and signature of person responsible)

CAUTION:

- 1.Risk of explosion if battery is replaced by an incorrect type, dispose of used batteries according to the instructions.
- disposal of a battery into fire or a hot oven, or mechanically crushing or cutting of a battery, that can result in an explosion;
- leaving a battery in an extremely high temperature surrounding environment that can result in an explosion or the leakage of flammable liquid or gas;
- a battery subjected to extremely low air pressure that may result in an explosion or the leakage of flammable liquid or gas.

2.EUT Temperature: -10℃ ~ -60℃ (Standalone), 0℃ ~ -40℃ (with adapter).

3.



High sound pressure with hearing damage risk.
Do not listen at high volume levels for long periods

— 12 —

The full text of the EU declaration of conformity is available at the following internet address:
<https://www.tecno-mobile.com/declaration/#/>

Frequency Range(RF):

BT: 2400-2483.5MHz(TX/RX)

Max. Of Transmit power (only for CE):

BT(EDR): 9.92dBm

BLE5.04: dBm

TWS Earphone

Model: BD04 Air

Hereby, TECNO MOBILE LIMITED

declares that this TWS Earphone is in compliance with the essential

requirements and other relevant provisions of directive 2014/53/EU.

— 13 —