

PCS 1900 RF Interference Potential Test Report

Hardware Setup

| | |
|--------------------------|----------------------------------|
| Probe Calibration Date | EF3DV3 - SN4041 March 11, 2024 |
| DAE Calibration Date | DAE4 Sn1798 May 22, 2024 |
| Software Version | 1.2.6.2199 |

Communication Systems

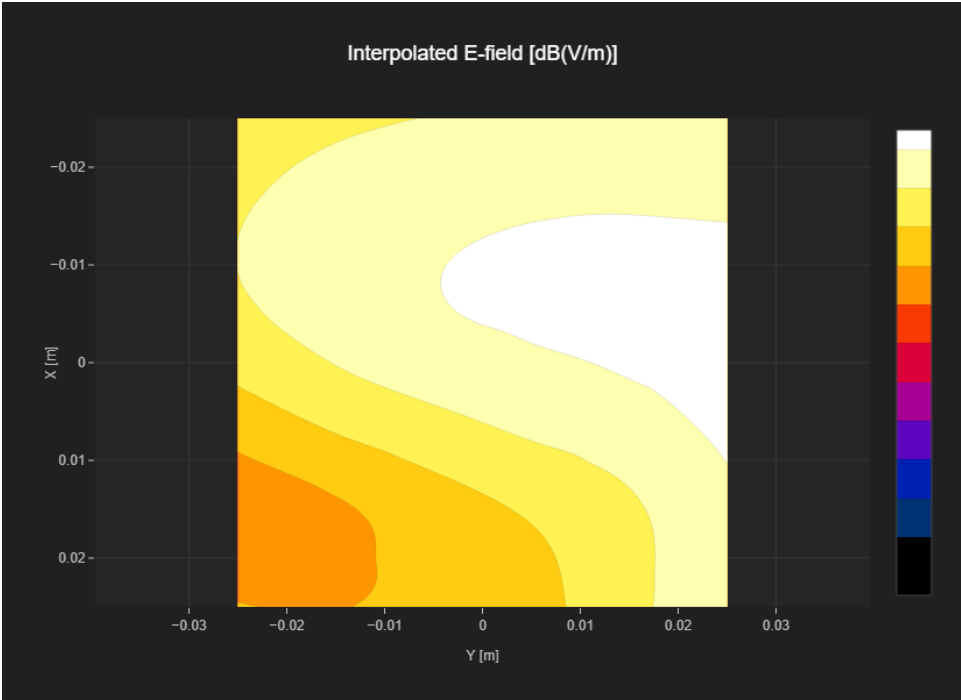
| | |
|-----------------------------|-----------------------------|
| MIF | 3.8 |
| Channel Frequency [MHz] | 512 1850.2 |
| Communication Systems' Name | GPRS-FDD (TDMA, GMSK, TN 0) |

Grid Settings

| | | | |
|---------------|------|-------------|------|
| Extent X [mm] | 50.0 | Step X [mm] | 10.0 |
| Extent Y [mm] | 50.0 | Step Y [mm] | 10.0 |
| Distance [mm] | 15.0 | | |

Results

| | | | |
|--------------|-------|------------------------|-------|
| Emax [dBV/m] | 23.5 | Eavg 50x50 Max [dBV/m] | 21.27 |
| Drift [dB] | -0.03 | RFail [dBV/m] | 25.07 |



PCS 1900 RF Interference Potential Test Report

Hardware Setup

Probe | Calibration Date

EF3DV3 - SN4041 | March 11, 2024

DAE | Calibration Date

DAE4 Sn1798 | May 22, 2024

Software Version

1.2.6.2199

Communication Systems

MIF

3.8

Channel | Frequency [MHz]

661 | 1880.0

Communication Systems' Name

GPRS-FDD (TDMA, GMSK, TN 0)

Grid Settings

Extent X [mm]

50.0

Step X [mm]

10.0

Extent Y [mm]

50.0

Step Y [mm]

10.0

Distance [mm]

15.0

Results

Emax [dBV/m]

23.0

Eavg 50x50 Max [dBV/m]

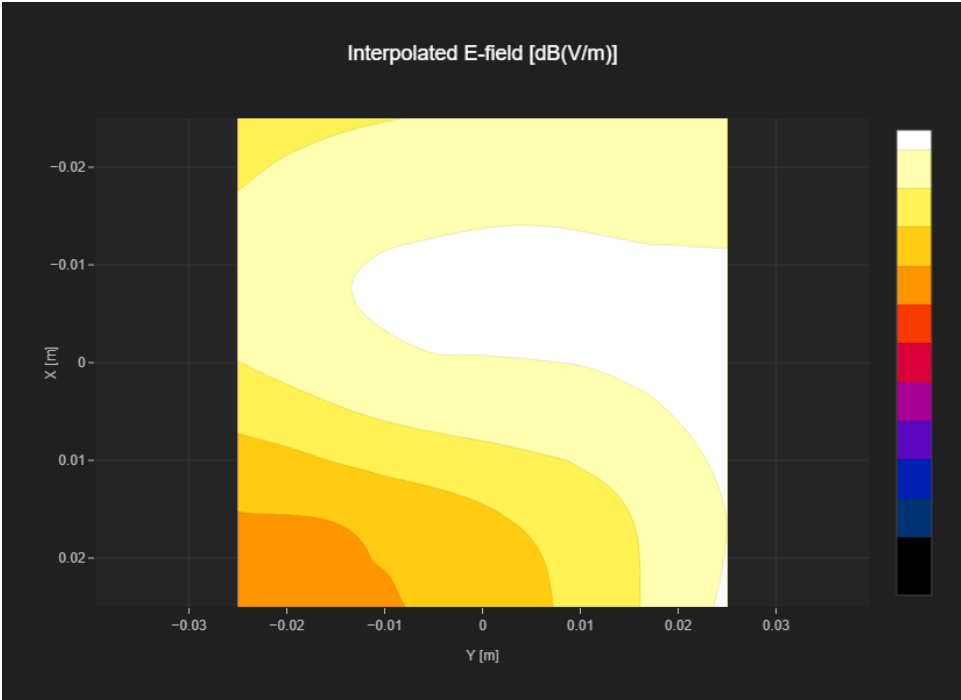
21.33

Drift [dB]

0.12

RFail [dBV/m]

25.13



PCS 1900 RF Interference Potential Test Report

Hardware Setup

| | |
|--------------------------|----------------------------------|
| Probe Calibration Date | EF3DV3 - SN4041 March 11, 2024 |
| DAE Calibration Date | DAE4 Sn1798 May 22, 2024 |
| Software Version | 1.2.6.2199 |

Communication Systems

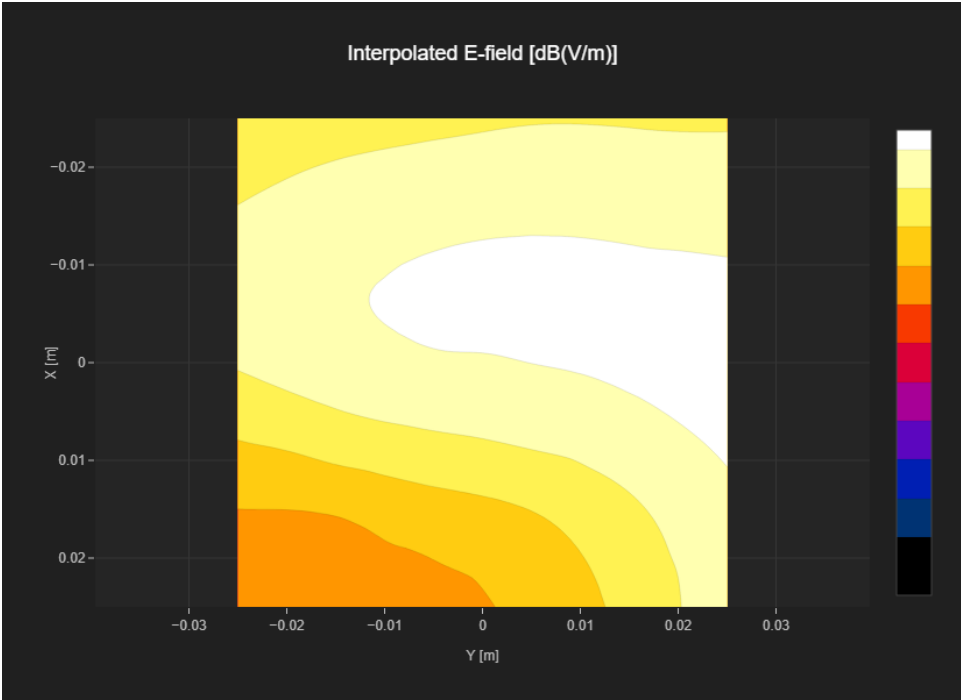
| | |
|-----------------------------|-----------------------------|
| MIF | 3.8 |
| Channel Frequency [MHz] | 810 1909.8 |
| Communication Systems' Name | GPRS-FDD (TDMA, GMSK, TN 0) |

Grid Settings

| | | | |
|---------------|------|-------------|------|
| Extent X [mm] | 50.0 | Step X [mm] | 10.0 |
| Extent Y [mm] | 50.0 | Step Y [mm] | 10.0 |
| Distance [mm] | 15.0 | | |

Results

| | | | |
|--------------|-------|------------------------|-------|
| Emax [dBV/m] | 23.53 | Eavg 50x50 Max [dBV/m] | 21.35 |
| Drift [dB] | 0.11 | RFail [dBV/m] | 25.15 |



PCS 1900 RF Interference Potential Test Report

Hardware Setup

| | |
|--------------------------|----------------------------------|
| Probe Calibration Date | EF3DV3 - SN4041 March 11, 2024 |
| DAE Calibration Date | DAE4 Sn1798 May 22, 2024 |
| Software Version | 1.2.6.2199 |

Communication Systems

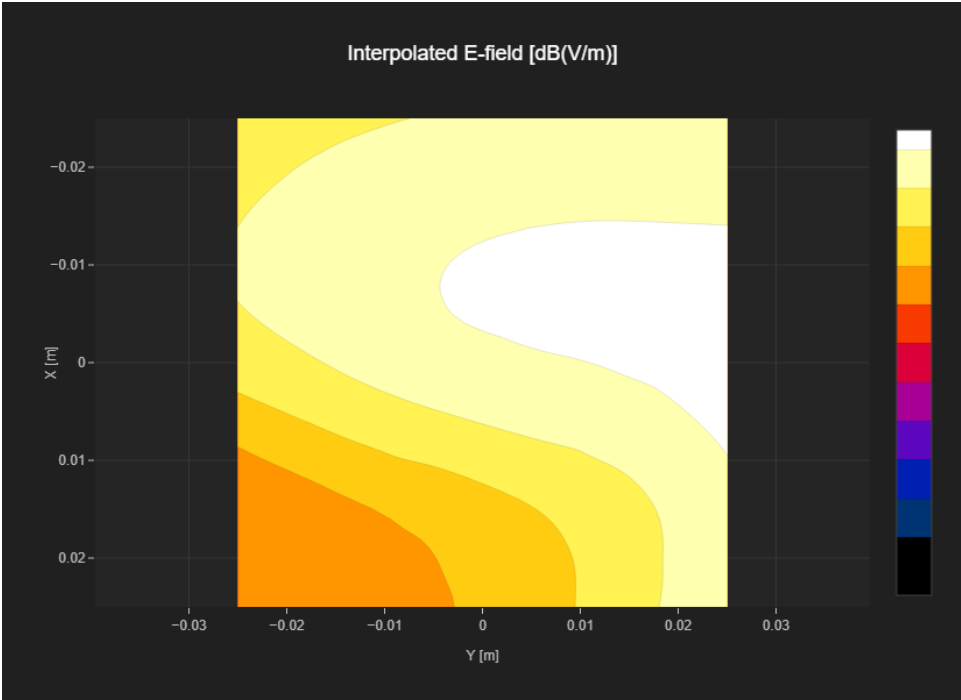
| | |
|-----------------------------|-------------------------------|
| MIF | 1.15 |
| Channel Frequency [MHz] | 512 1850.2 |
| Communication Systems' Name | GPRS-FDD (TDMA, GMSK, TN 0-1) |

Grid Settings

| | | | |
|---------------|------|-------------|------|
| Extent X [mm] | 50.0 | Step X [mm] | 10.0 |
| Extent Y [mm] | 50.0 | Step Y [mm] | 10.0 |
| Distance [mm] | 15.0 | | |

Results

| | | | |
|--------------|-------|------------------------|-------|
| Emax [dBV/m] | 25.68 | Eavg 50x50 Max [dBV/m] | 23.38 |
| Drift [dB] | 0.08 | RFail [dBV/m] | 24.53 |



PCS 1900 RF Interference Potential Test Report

Hardware Setup

| | |
|--------------------------|----------------------------------|
| Probe Calibration Date | EF3DV3 - SN4041 March 11, 2024 |
| DAE Calibration Date | DAE4 Sn1798 May 22, 2024 |
| Software Version | 1.2.6.2199 |

Communication Systems

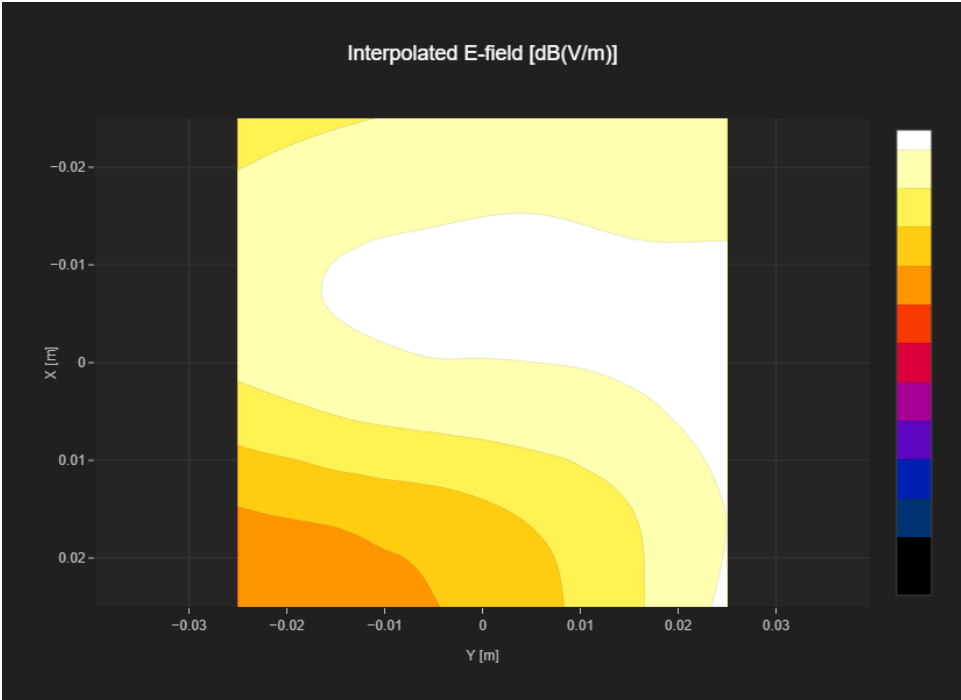
| | |
|-----------------------------|-------------------------------|
| MIF | 1.15 |
| Channel Frequency [MHz] | 661 1880.0 |
| Communication Systems' Name | GPRS-FDD (TDMA, GMSK, TN 0-1) |

Grid Settings

| | | | |
|---------------|------|-------------|------|
| Extent X [mm] | 50.0 | Step X [mm] | 10.0 |
| Extent Y [mm] | 50.0 | Step Y [mm] | 10.0 |
| Distance [mm] | 15.0 | | |

Results

| | | | |
|--------------|-------|------------------------|-------|
| Emax [dBV/m] | 24.98 | Eavg 50x50 Max [dBV/m] | 23.29 |
| Drift [dB] | 0.06 | RFail [dBV/m] | 24.44 |



PCS 1900 RF Interference Potential Test Report

Hardware Setup

| | |
|--------------------------|----------------------------------|
| Probe Calibration Date | EF3DV3 - SN4041 March 11, 2024 |
| DAE Calibration Date | DAE4 Sn1798 May 22, 2024 |
| Software Version | 1.2.6.2199 |

Communication Systems

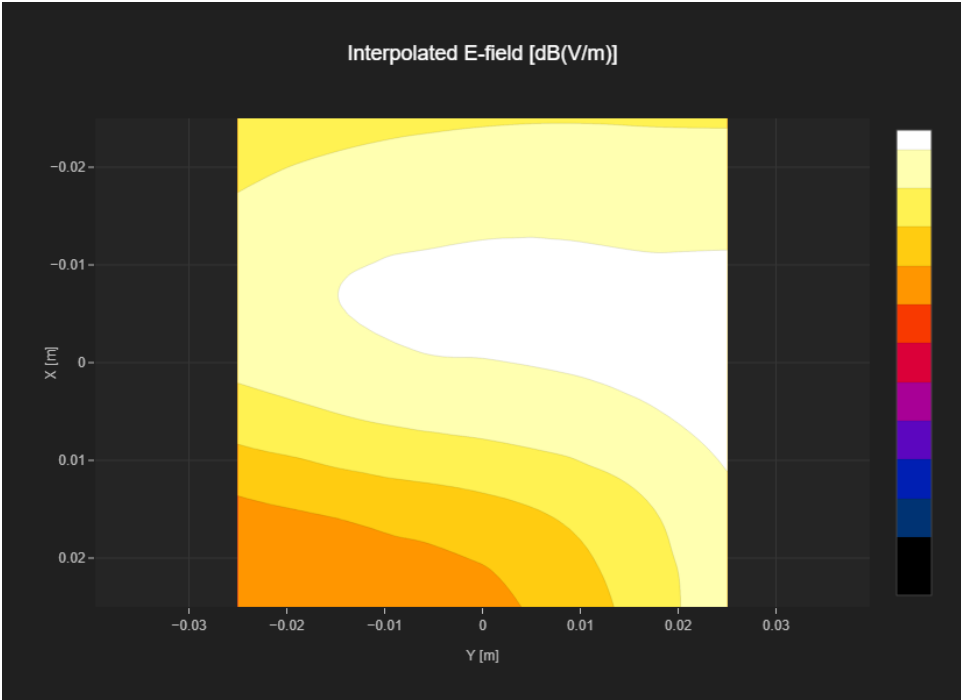
| | |
|-----------------------------|-------------------------------|
| MIF | 1.15 |
| Channel Frequency [MHz] | 810 1909.8 |
| Communication Systems' Name | GPRS-FDD (TDMA, GMSK, TN 0-1) |

Grid Settings

| | | | |
|---------------|------|-------------|------|
| Extent X [mm] | 50.0 | Step X [mm] | 10.0 |
| Extent Y [mm] | 50.0 | Step Y [mm] | 10.0 |
| Distance [mm] | 15.0 | | |

Results

| | | | |
|--------------|-------|------------------------|-------|
| Emax [dBV/m] | 25.41 | Eavg 50x50 Max [dBV/m] | 23.26 |
| Drift [dB] | -0.0 | RFail [dBV/m] | 24.41 |



PCS 1900 RF Interference Potential Test Report

Hardware Setup

| | |
|--------------------------|----------------------------------|
| Probe Calibration Date | EF3DV3 - SN4041 March 11, 2024 |
| DAE Calibration Date | DAE4 Sn1798 May 22, 2024 |
| Software Version | 1.2.6.2199 |

Communication Systems

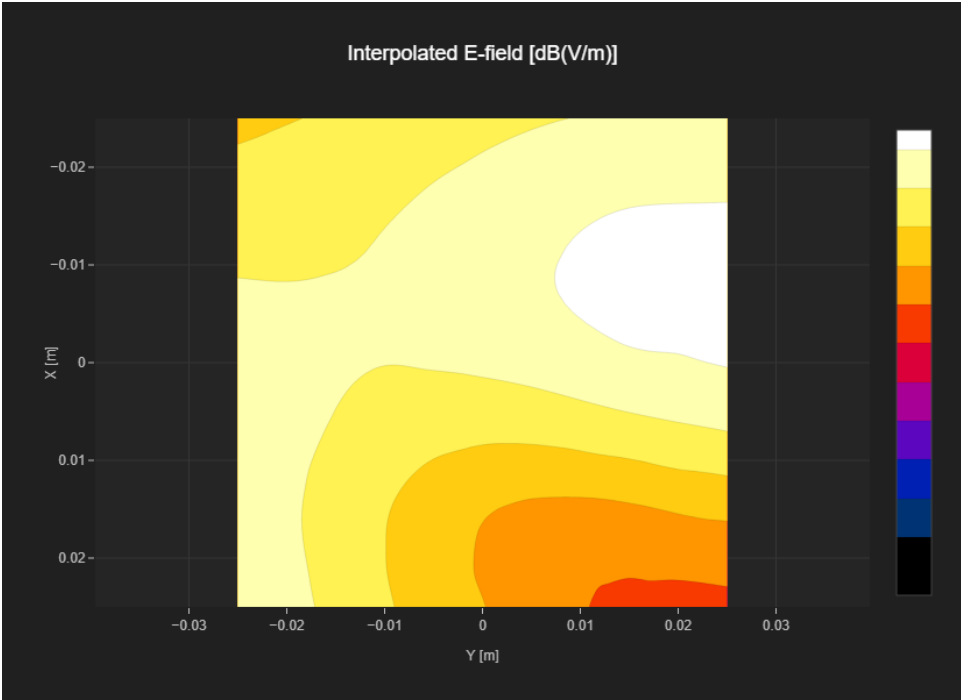
| | |
|-----------------------------|-----------------------------|
| MIF | 3.8 |
| Channel Frequency [MHz] | 512 1850.2 |
| Communication Systems' Name | GPRS-FDD (TDMA, GMSK, TN 0) |

Grid Settings

| | | | |
|---------------|------|-------------|------|
| Extent X [mm] | 50.0 | Step X [mm] | 10.0 |
| Extent Y [mm] | 50.0 | Step Y [mm] | 10.0 |
| Distance [mm] | 15.0 | | |

Results

| | | | |
|--------------|------|------------------------|-------|
| Emax [dBV/m] | 27.4 | Eavg 50x50 Max [dBV/m] | 24.64 |
| Drift [dB] | 0.0 | RFail [dBV/m] | 28.44 |



PCS 1900 RF Interference Potential Test Report

Hardware Setup

| | |
|--------------------------|----------------------------------|
| Probe Calibration Date | EF3DV3 - SN4041 March 11, 2024 |
| DAE Calibration Date | DAE4 Sn1798 May 22, 2024 |
| Software Version | 1.2.6.2199 |

Communication Systems

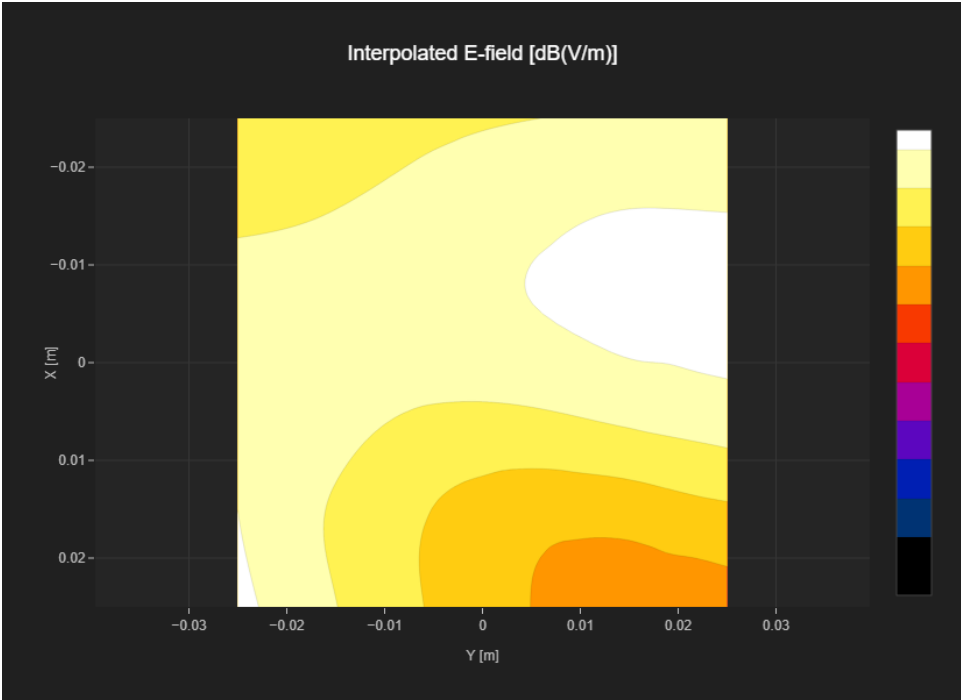
| | |
|-----------------------------|-----------------------------|
| MIF | 3.8 |
| Channel Frequency [MHz] | 661 1880.0 |
| Communication Systems' Name | GPRS-FDD (TDMA, GMSK, TN 0) |

Grid Settings

| | | | |
|---------------|------|-------------|------|
| Extent X [mm] | 50.0 | Step X [mm] | 10.0 |
| Extent Y [mm] | 50.0 | Step Y [mm] | 10.0 |
| Distance [mm] | 15.0 | | |

Results

| | | | |
|--------------|-------|------------------------|-------|
| Emax [dBV/m] | 26.97 | Eavg 50x50 Max [dBV/m] | 24.65 |
| Drift [dB] | 0.05 | RFail [dBV/m] | 28.45 |



PCS 1900 RF Interference Potential Test Report

Hardware Setup

| | |
|--------------------------|----------------------------------|
| Probe Calibration Date | EF3DV3 - SN4041 March 11, 2024 |
| DAE Calibration Date | DAE4 Sn1798 May 22, 2024 |
| Software Version | 1.2.6.2199 |

Communication Systems

| | |
|-----------------------------|-----------------------------|
| MIF | 3.8 |
| Channel Frequency [MHz] | 810 1909.8 |
| Communication Systems' Name | GPRS-FDD (TDMA, GMSK, TN 0) |

Grid Settings

| | | | |
|---------------|------|-------------|------|
| Extent X [mm] | 50.0 | Step X [mm] | 10.0 |
| Extent Y [mm] | 50.0 | Step Y [mm] | 10.0 |
| Distance [mm] | 15.0 | | |

Results

| | | | |
|--------------|-------|------------------------|-------|
| Emax [dBV/m] | 26.87 | Eavg 50x50 Max [dBV/m] | 24.31 |
| Drift [dB] | 0.02 | RFail [dBV/m] | 28.11 |

