



KYOCERA WIRELESS CORP.
10300 CAMPUS POINT DRIVE
SAN DIEGO, CA 92121

Kyocera Wireless Corp.
10300 Campus Point Drive
San Diego, CA 92121

858 882 2100

July 10, 2002

Federal Communications Commission,
Authorization & Evaluation Division,
7435 Oakland Mills Road
Columbia, MD. 21046

We hereby certify that the that handset FCC ID: OVFKWC-3245 complies with
ANSI/IEEE C95.1-1992 Standard for Safety Level with Respect to Human
Exposure to Radio Frequency Electromagnetic Fields, 3 kHz to 300 GHz.

Compliance was determined by testing appropriate parameters according to
standard.

Kyocera Wireless Corp.

A handwritten signature in cursive script, appearing to read "Allen Tran".

Allen Tran

Director, Engineering

Disposal of Lithium Ion (Lilon) Batteries

For safe disposal options of your Lilon batteries, contact your nearest Sprint PCS-authorized service center.

Special Note: Be sure to dispose of your battery properly. In some areas, the disposal of batteries in household or business trash may be prohibited.

Note: For safety, do not handle a damaged or leaking Lilon battery.

Acknowledging Special Precautions and the FCC Notice

FCC Notice

The phone may cause TV or radio interference if used in close proximity to receiving equipment. The FCC can require you to stop using the phone if such interference cannot be eliminated.

Vehicles using liquefied petroleum gas (such as propane or butane) must comply with the National Fire Protection Standard (NFPA-58). For a copy of this standard, contact the National Fire Protection Association, One Batterymarch Park, Quincy, MA 02269, Attn: Publication Sales Division.

Cautions

Any changes or modifications to your phone not expressly approved in this document could void your warranty for this equipment, and void your authority to operate this equipment. Only use approved batteries, antennas and chargers. The use of any unauthorized accessories may be dangerous and void the phone warranty if said accessories cause damage or a defect to the phone.

Although your phone is quite sturdy, it is a complex piece of equipment and can be broken. Avoid dropping, hitting, bending or sitting on it.

Body-Worn Operation

To maintain compliance with FCC RF exposure guidelines, if you wear a handset on your body, use the Kyocera Wireless Corp. (KWC) supplied or approved carrying case, holster or other body-worn accessory. If you do not use a body-worn accessory, ensure that the separation from the

closest point of the handset to the body (include antenna) is at least 22.5mm when transmitting. Use of non-KWC approved accessories may violate FCC RF exposure guidelines.

For more information about RF exposure, please visit the FCC Web site at www.fcc.gov.

Specific Absorption Rates (SAR) for Wireless Phones

The SAR is a value that corresponds to the relative amount of RF energy absorbed in the head of a user of a wireless handset.

The SAR value of a phone is the result of an extensive testing, measuring and calculation process. It does not represent how much RF the phone emits. All phone models are tested at their highest value in strict laboratory settings. But when in operation, the SAR of a phone can be substantially less than the level reported to the FCC. This is because of a variety of factors including its proximity to a base station antenna, phone design and other factors. What is important to remember is that each phone meets strict federal guidelines. Variations in SARs do not represent a variation in safety.

All phones must meet the federal standard, which incorporates a substantial margin of safety. As stated above, variations in SAR values between different model phones do not mean variations in safety. SAR values at or below the federal standard of 1.6 W/kg are considered safe for use by the public.

The highest reported SAR values of the 3245 are:

AMPS mode (Part 22)

Head: 1.27 W/kg; Body-worn (with KWC accessory): 0.441 W/kg

PCS mode (Part 24)

Head: 1.19 W/kg; Body-worn (with KWC accessory): 0.222 W/kg

FCC Radio Frequency Emission

This phone meets the FCC Radio Frequency Emission Guidelines.

FCC ID number: OVFKWC-3245. More information on the phone's SAR can be found from the following FCC Web site:

<http://www.fcc.gov/oet/fccid>.

**Kyocera Wireless Corp.
KWC 3245**

**SPECIFIC ABSORPTION RATE (SAR)
REPORT**

Company Kyocera Wireless Corp.		Document No.	
KWC-3245 SAR REPORT		Issue No:	Date July 2002
FCC ID OVFKWC-3245		Page Number 2	

CONTENT

1	INTRODUCTION	3
2	SAR TEST RESULT SUMMARY	4
2.1	MAXIMUM RESULTS FOUND DURING SAR EVALUATION	4
2.1.1	Head Configuration	4
3	DESCRIPTION OF TESTED DEVICE	5
4	TEST CONDITIONS	7
4.1	AMBIENT CONDITIONS	7
4.2	RF CHARACTERISTICS OF THE TEST SITE	7
4.3	TEST SIGNAL, FREQUENCIES AND OUTPUT POWER	7
5	DESCRIPTION OF THE TEST EQUIPMENT	8
5.1	SYSTEM VALIDATION	8
5.2	TISSUE STIMULANTS	9
5.2.1	Head Tissue Stimulant	9
5.2.2	Muscle Tissue Stimulant	10
5.3	PHANTOMS	10
5.4	ISOTROPIC E-FIELD PROBE ET3DV6	11
6	DESCRIPTION OF THE TEST PROCEDURE	12
6.1	TEST POSITIONS	12
6.1.1	Against Phantom Head	13
6.1.2	Body Worn Configuration	15
6.2	SCAN PROCEDURES	15
6.3	SAR AVERAGING METHODS	15
7	MEASUREMENT UNCERTAINTY	16
8	TEST DATA	16
8.1	HEAD SAR TEST RESULTS	17
8.2	BODY WORN SAR TEST RESULT	18
9	TEST SYSTEM PHOTOS	19
	APPENDIX A: VALIDATION TEST PRINTOUT	21
	APPENDIX B: SAR DISTRIBUTION PRINTOUT	22
	APPENDIX C: PROBE CALIBRATION CERTIFICATE	23

Company Kyocera Wireless Corp.		Document No.	
KWC-3245 SAR REPORT		Issue No:	Date July 2002
		Page Number 3	
FCC ID OVFKWC-3245			

1 INTRODUCTION

This test report describes an environmental evaluation measurement of specific absorption rate (SAR) distribution in simulated human head tissues exposed to radio frequency (RF) radiation from a wireless portable device manufactured by Kyocera Wireless Corp. (KWC). These measurements were performed for compliance with the rules and regulations of the U.S. Federal Communications Commission (FCC). The testing was performed in July 2002 in the KWC SAR Test Facility. The wireless device is described as follows;

EUT Type: *Trimode, CDMA(PCS), CDMA and Analog (Cellular) Phone*
 Trade Name: *Kyocera Wireless Corp.*
 Model: *KWC-3245*
 Tx Frequency : *824.04 – 848.97 and 1851.25 – 1908.75 MHz*
 Modulation: *CDMA and Analog*
 Antenna: *Retracting whip w/ helix*
 FCC Classification: *Non-Broadcast Transmitter Held to Ear*
 Application Type: *Certification*
 Serial Number : *3T-X---02THCZ*
 FCC ID: *OVFKWC-3245*
 Place of Test: *KWC, 10300 Campus Point Drive, Lab AA-136, San Diego, CA, USA*
 Date of Test: *July 1-10, 2002*
 FCC Rule Part: *47 CFR 2.1093; OET Bulletin 65, Sup. C; 47 CFR 22; 47 CFR 24*

Testing has been carried out in accordance with:
IEEE P1528-200X Draft 6.4

Company Kyocera Wireless Corp.	Document No.	
KWC-3245 SAR REPORT	Issue No:	Date July 2002
FCC ID OVFKWC-3245	Page Number 4	

2 SAR TEST RESULT SUMMARY

This device has been tested for localised specific absorption rate (SAR) for uncontrolled environment/general population exposure limits specified in ANSI/IEEE Std. C95.1 ~ 1992 and has been tested in accordance with the measurement procedures specified in IEEE P1528-200X Draft 6.4. Normal antenna operating positions were incorporated, with the device transmitting at frequencies consistent with normal usage of the device. The device has been shown to be capable of compliance for localised specific absorption rate (SAR) for uncontrolled environment/general population exposure limits specified in ANSI/IEEE std. C95.1-1992

2.1 Maximum Results Found during SAR Evaluation

The equipment is deemed to fulfil the requirements if the measured values are less than or equal to the limit.

2.1.1 Head Configuration

Mode/Ch/f(MHz)	Conducted Power	Antenna Position	Device Position	Limit (mW/g)	Measured (mW/g)	Result
FM/991/824.04	25.45 dBm	Extended	Left Tilt	1.6	1.27	PASSED
PCS/600/1880	21.97 dBm	Retracted	Right Cheek	1.6	1.19	PASSED

2.1.2 Body Worn Configuration (with KWC body worn accessories)

Mode/Ch/f(MHz)	Conducted Power	Antenna Position	Device Position	Limit (mW/g)	Measured (mW/g)	Result
FM/383/836.49	25.56 dBm	Retracted	Waist level	1.6	0.441	PASSED
PCS/25/1851.25	22.15 dBm	Retracted	Waist level	1.6	0.222	PASSED

2.1.3 Measurement Uncertainty

Combined Uncertainty (Assessment & Source)	± 10.32 %
Extended Uncertainty (k=2)	± 20.6 %

Company		Document No.	
Kyocera Wireless Corp.			
KWC-3245 SAR REPORT		Issue No:	Date
		July 2002	
FCC ID OVFKWC-3245		Page Number	
		5	

3 DESCRIPTION OF TESTED DEVICE

The test sample consisted of a KWC 3245. This model will operate in CDMA PCS, CDMA and analog cellular mode. The CDMA PCS mode is designed to transmit in the 1851.25 – 1908.75 MHz band. The cellular FM AMPS mode is designed to transmit in the 824.04 – 848.97 MHz. The cellular CDMA mode is designed to transmit in the 824.04 – 848.97 MHz band.

The KWC-3245 is a tri-mode and dual band cellular/PCS phone. The antenna is a standard retracting whip antenna tuned for dual frequency, with a helix antenna that is at the base of the whip which gets activated when the whip is retracted. See pictures below. Since either position is possible during use, both retracted and extended were tested, at the low, mid, and high frequencies of each band.



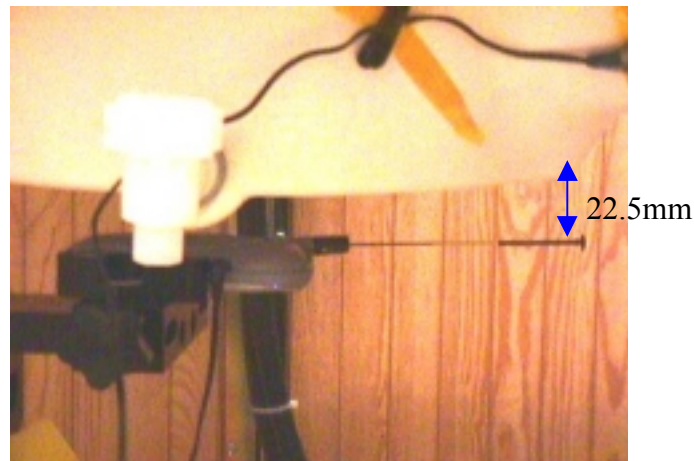
There is only one battery option available to operate KWC-3245. All measurements were done with production batteries.

Company		Document No.	
Kyocera Wireless Corp.			
KWC-3245 SAR REPORT		Issue No:	Date
		July 2002	
FCC ID OVFKWC-3245		Page Number	
		6	

The KWC-3245 has provision for headset to allow hands-free operation. The following body worn accessories are available for KWC-3245. SAR measurements for hands-free operating condition were done at the low, mid, and high frequencies of each band.



The SAR levels were also tested with 22.5mm air space in all modes for the hands-free application with other body-worn holster that contains no metal and provides at least 22.5mm separation from the closest point of the handset (included the antenna) to the body.



Company Kyocera Wireless Corp.		Document No.	
KWC-3245 SAR REPORT		Issue No:	Date July 2002
FCC ID OVFKWC-3245		Page Number 7	

4 TEST CONDITIONS

4.1 Ambient Conditions

All tests were performed under the following environmental conditions:

Ambient Temperature:	22 ± 1 Degrees C
Tissue simulating liquid temperature:	22 ± 1 Degrees C
Humidity:	38 %
Pressure:	1015 mB

4.2 RF characteristics of the test site

All KWC dosimetry equipment is operated within a shielded screen room manufactured by Lindgren RF Enclosures to provide isolation from external EM fields.

The E-field probes of the DASY 3 system are capable of detecting signals as low as 5µW/g in the liquid dielectric, and so external fields are minimised by the screen room, leaving the phone as the dominate radiation source. The floor of the screen room is reflective, so 2 two-foot square ferrite panels are placed beneath the phantom area of the DASY system to minimise reflected energy that would otherwise re-enter the phantom and combine constructively or destructively with the desired fields. These ferrite panels provide roughly 12 to 13 dB of attenuation in the frequency range of 900 MHz, and 7 to 8 dB of attenuation in the frequency range of 1.9 GHz.

4.3 Test Signal, Frequencies and Output Power

The device was controlled by using Kyocera Wireless Phone Support Toolkit, Test Code Controller.

In all operating bands, the measurements were performed on low, mid and high channels.

The phone was set to nominal maximum power level during all tests and at the beginning of the each test the battery was fully charged. Radiated power output was measured in KWC antenna range, fully an-echoic chamber from the same unit that was used in SAR testing.

Company Kyocera Wireless Corp.	Document No.	
KWC-3245 SAR REPORT	Issue No:	Date July 2002
FCC ID OVFKWC-3245	Page Number 8	

DASY3 system measures power drift during SAR testing by comparing E-field in the same location at the beginning and at the end of measurement. These records were used to monitor stability of power output.

5 DESCRIPTION OF THE TEST EQUIPMENT

The measurements were performed with an automated near-field scanning system, DASY3, manufactured by Schmid & Partner Engineering AG (SPEAG) of Zurich, Switzerland.

Test Equipment	Serial Number	Due date
DASY3 DAE3 Version 1	494	01-21-03
E-field Probe ET3DV6	1663	02-21-03
Dipole Validation kit, D835V2	453	02-11-04
Dipole Validation kit, D1900V2	5D005	02-20-04

The calibration records of E-field probe are attached in Appendix C.

Additional equipment needed in validation

Test Equipment	Due date
Signal Generator, HP E4421B	02-26-03
Power meter, Giga-tronics 8541C	03-19-03
Power Sensor, Giga-tronics	01-31-03
Vector Network Analyzer, Agilent 8753ES	02-11-03
HP 85070B Dielectric Probe	--
Thermometer	--

5.1 System Validation

The probes are calibrated annually by the manufacturer. Dielectric parameters of the stimulating liquids are measured with an automated Hewlett Packard 85070B dielectric probe in conjunction with an Agilent 8753ES network analyser.

The SAR measurements of the device were done within 24 hours of system accuracy verification, which was done using the dipole validation kit. Power level of 10dBm was supplied to a dipole antenna placed under the flat section of SAM phantom. The validation results are in the table below and printouts of the validation test are attached in Appendix A. All the measured parameters were within the specification.

Company Kyocera Wireless Corp.			Document No.	
KWC-3245 SAR REPORT			Issue No:	Date July 2002
FCC ID OVFKWC-3245			Page Number 9	

Note since the validation reference in muscle liquid is not available, the system validation with head tissues was done for the device testing in muscle. Based on OET 65 Supplement C EAB Part 22/24 SAR review Reminder Sheet 01/2002, this is a valid test.

Tissue	F (MHz)	Description	Validation SAR (mW/g), 1g	Dielectric Parameters		Temp (°C)	Test date	Comments Validation testing -
				ϵ_r	σ (S/m)			
Head	835	Measured	0.103	41.5	0.90	22	07-03-02	for device testing in head liquid
		Measured	0.104	41.4	0.90	22	07-05-02	for continuing testing in head liquid
		Measured	0.104	41.6	0.89	22	07-08-02	For device testing in muscle
		SPEAG Reference	0.104	41.9	0.89	--	02-11-02	
		FCC Reference	--	41.5	0.90	20-26	--	
Head	1900	Measured	0.448	40.3	1.43	22	07-02-02	for device testing in head liquid and for device testing in muscle
		SPEAG Reference	0.456	39.1	1.47	--	02-20-02	
		FCC Reference	--	40.0	1.40	20-26	--	
Muscle	835	Measured	--	56.03	0.94	22	07-08-02	for device testing in muscle
		FCC Reference	--	55.2	0.97	--	--	
Muscle	1900	Measured	--	54.0	1.47	22	07-02-02	for device testing in muscle
		FCC Reference	--	53.3	1.52	20-26	--	

FCC reference values are adopted from OET Bulletin 65 (97-01) Supplement C (01-01).

5.2 Tissue Stimulants

All dielectric parameters of tissue stimulants were measured within 24 hours of SAR measurements. The depth of the tissue stimulant in the ear reference point and flat reference point of the phantom were at least 15cm during all the tests.

5.2.1 Head Tissue Stimulant

The composition of the head tissue simulating liquid for 835MHz is

51.07%	Water
0.23%	Cellulose
47.31%	Sugar
0.24%	Preventol
1.15%	Salt

and for 1900MHz is

Company		Document No.	
Kyocera Wireless Corp.			
KWC-3245 SAR REPORT		Issue No:	Date
		July 2002	
FCC ID OVFKWC-3245		Page Number	
		10	

54% Water
44.91% Glycol monobutyl
0.21% Salt

The ingredients above are adopted from Application Note: Recipes for Head Tissue Simulating Liquid by SPEAG.

5.2.2 Muscle Tissue Stimulant

The composition of the muscle tissue simulating liquid for 835MHz is

65.45% Water
34.31% Sugar
0.1% Preventol
0.62% Salt

and for 1900MHz is

69.91% Water
29.96% Glycol monobutyl
0.13% Salt

The ingredients above are adopted from Application Note: Recipes for Muscle Tissue Simulating Liquid by SPEAG.

5.3 Phantoms

SAM v4.0 phantom, manufactured by SPEAG, was used during the measurement. It has fiberglass shell integrated in a wooden table. The shape of the shell corresponds to the phantom defined by IEEE SCC34-SC2. It enables the dosimetric evaluation of left and right hand phone usage as well as body mounted usage at the flat phantom region. Reference markings on the phantom allow the complete set-up of all predefined phantom positions and measurement grids by manually teaching three points in the robot.

The thickness of phantom shell is 2mm except for the ear, where an integrated ear spacer provides a 6mm spacing from the tissue boundary. Manufacturer reports tolerance in shell thickness to be $\pm 0.1\text{mm}$.

Company		Document No.	
Kyocera Wireless Corp.			
KWC-3245 SAR REPORT		Issue No:	Date
			July 2002
FCC ID		Page Number	
OVFKWC-3245		11	

5.4 Isotropic E-Field Probe ET3DV6

Construction	Symmetrical design with triangular core Built-in optical fiber for surface detection system Built-in shielding against static charges PEEK enclosure material (resistant to organic solvents, e.g., glycol)
Calibration	Calibration certificate in Appendix C
Frequency	10MHz to 3GHz (dosimetry); Linearity: $\pm 0.2\text{dB}$ (30MHz to 3GHz)
Optical Surface	$\pm 0.2\text{mm}$ repeatability in air and clear liquid over diffuse reflecting
Detection	surface
Directivity	$\pm 0.2\text{dB}$ in HSL (rotation around probe axis) $\pm 0.4\text{dB}$ in HSL (rotation normal to probe axis)
Dynamic Range	5 $\mu\text{W/g}$ to $> 100 \text{ mW/g}$; Linearity: $\pm 0.2\text{dB}$
Dimensions	Overall length: 330mm Tip length: 16mm Body diameter: 12mm Tip diameter: 6.8mm Distance from probe tip to dipole centers: 2.7mm
Application	General dosimetry up to 3GHz Compliance tests of mobile phones Fast automatic scanning in arbitrary phantoms.



Company Kyocera Wireless Corp.	Document No.	
KWC-3245 SAR REPORT	Issue No:	Date July 2002
FCC ID OVFKWC-3245	Page Number 12	

6 DESCRIPTION OF THE TEST PROCEDURE

6.1 Test Positions

The device was placed in the holder. The bottom of the device aligns with the bottom of the holder clamp to provide a standard positioning and ensure enough free space for antenna. See picture.



Device holder was provided by SPEAG together with DASY3.



Company Kyocera Wireless Corp.		Document No.	
KWC-3245 SAR REPORT		Issue No:	Date July 2002
FCC ID OVFKWC-3245		Page Number 13	

6.1.1 Against Phantom Head

Measurements were made on both left hand side and right hand side of the phantom.

The device was position against phantom according to OET Bulletin 65 (97-01) Supplement C (01-01). Definitions of terms used in aligning the device to a head phantom are available in IEEE Draft Standard P1528-2001 "Recommended Practice for Determining the Spatial-Peak Specific Absorption Rate (SAR) in the Human Body Due to Wireless Communications Devices: Experimental Techniques"

6.1.1.1 Initial Ear Position

The device was initially positioned with the earpiece region pressed against the ear spacer of a head phantom parallel to the "Neck-Front" line defined along the base of the ear spacer that contains the "ear reference point". The "test device reference point" is aligned to the "ear reference point" on the head phantom and the "vertical centerline" is aligned to the "phantom reference plane".

6.1.1.2 Cheek Position

"Initial ear position" alignments are maintained and the device is brought toward the mouth of the head phantom by pivoting along the "Neck-Front" line until any point on the display, keypad or mouthpiece portions of the handset is in contact with the phantom or when any portion of a foldout, sliding or similar keypad cover opened to its intended self-adjusting normal use position is in contact with the cheek or mouth of the phantom.



Company Kyocera Wireless Corp.		Document No.	
KWC-3245 SAR REPORT		Issue No:	Date July 2002
FCC ID OVFKWC-3245		Page Number 14	

6.1.1.3 *Tilt Position*

In the “cheek position”, if the earpiece of the device is not in full contact with the phantom’s ear spacer and the peak SAR location for the “cheek position” is located at the ear spacer region or corresponds to the earpiece region of the handset, the device is returned to the “initial ear position” by rotating it away from the mouth until the earpiece is in full contact with the ear spacer. Otherwise, the device is moved away from the cheek perpendicular to the line passes through both “ear reference points” for approximate 2-3cm. While it is in this position, the device is tilted away from the mouth with respect to the “test device reference point” by 15°. After the tilt, it is then moved back toward the head perpendicular to the line passes through both “ear reference point” until the device touches the phantom or the ear spacer. If the antenna touches the head first, the positioning process is repeated with a tilt angle less than 15° so that the device and its antenna would touch the phantom simultaneously.



Company		Document No.	
Kyocera Wireless Corp.			
KWC-3245 SAR REPORT		Issue No:	Date
		July 2002	
FCC ID OVFKWC-3245		Page Number	
		15	

6.1.2 Body Worn Configuration

KWC body worn accessories were tested for the FCC RF exposure compliance. The phone was positioned into the carrying case and placed below the flat phantom. Headset was connected during measurements.



The SAR levels were also measured with 22.5mm air space for the hands-free application, which allow user can use other body-worn holster that contains no metal and provides at least 22.5mm separation from the closest point of the handset to the body.

6.2 Scan Procedures

First coarse scans are used for quick determination of the field distribution. Next a cube scan, 7x7x7 points; spacing between each point 5x5x5mm, is performed around the highest E-field value to determine the averaged SAR-distribution over 1g.

6.3 SAR Averaging Methods

The maximum SAR value is average over its volume using interpolation and extrapolation.

The interpolation of the points is done with a 3d-Spline. The 3d-Spline is composed of three one-dimensional splines with the “Not a knot” –condition [W. Gander, Computermathematik, p. 141-150] (x, y and z – directions) [numerical Recipes in C, Second Edition, p 123].

The extrapolation is based on least square algorithm [W. Gander, Computermathematik, p. 168-180]. Through the points in the first 30mm in all z-axis, polynomials of order four are

Company Kyocera Wireless Corp.			Document No.	
KWC-3245 SAR REPORT			Issue No:	Date July 2002
FCC ID OVFKWC-3245			Page Number 16	

calculated. This polynomial is then used to evaluate the points between the surface and the probe tip. The points, calculated from the surface, have a distance of 1mm from one another.

7 MEASUREMENT UNCERTAINTY

Description of individual measurement uncertainty

Uncert. description	Uncert. Value %	Probability distribution	Divisor	C_i^1 1g	Stand. Uncert (1g) %	V_i^2 or V_{eff}
Measurement system						
Probe calibration	± 4.4	normal	1	1	± 4.4	∞
Axial isotropy of the probe	± 4.7	rectangular	$\sqrt{3}$	$(1-C_p)^{1/2}$	± 1.9	∞
Sph. Isotropy of the probe	± 9.6	rectangular	$\sqrt{3}$	$(C_p)^{1/2}$	± 3.9	∞
Spatial resolution	± 0.0	rectangular	$\sqrt{3}$	1	± 0.0	∞
Boundary effects	± 5.5	rectangular	$\sqrt{3}$	1	± 3.2	∞
Probe linearity	± 4.7	rectangular	$\sqrt{3}$	1	± 2.7	∞
Detection limit	± 1.0	rectangular	$\sqrt{3}$	1	± 0.6	∞
Readout electronics	± 1.0	normal	1	1	± 1.0	∞
Response time	± 0.8	rectangular	$\sqrt{3}$	1	± 0.5	∞
Integration time	± 1.4	rectangular	$\sqrt{3}$	1	± 0.8	∞
RF ambient conditions	± 3.0	rectangular	$\sqrt{3}$	1	± 1.7	∞
Mech. Constrains of robot	± 0.4	rectangular	$\sqrt{3}$	1	± 0.2	∞
Probe positioning	± 2.9	rectangular	$\sqrt{3}$	1	± 1.7	∞
Extrap. and integration	± 3.9	rectangular	$\sqrt{3}$	1	± 2.3	∞
Test Sample Related						
Device positioning	± 3.0	normal	$\sqrt{3}$	1	± 1.7	∞
Power drift	± 5.0	normal	$\sqrt{3}$	1	± 2.9	∞
Phantom and setup						
Phantom uncertainty	± 4.0	rectangular	1	1	± 2.3	∞
Liquid conductivity (target)	± 5.0	rectangular	$\sqrt{3}$	0.6	± 1.7	∞
Liquid conductivity (meas.)	± 10.0	rectangular	$\sqrt{3}$	0.6	± 3.5	∞
Liquid permittivity (target)	± 5.0	rectangular	$\sqrt{3}$	0.6	± 1.7	∞
Liquid permittivity (meas.)	± 5.0	rectangular	$\sqrt{3}$	0.6	± 1.7	∞
Combined Standard Uncertainty					± 10.32	
Extended Standard Uncertainty (k=2)					± 20.6	

8 TEST DATA

For each mode, corresponding SAR distribution printouts of maximum results in every device position (Cheek or Tilt), every antenna position (Extended or Retracted) are shown in Appendix

File Ref:

Company Kyocera Wireless Corp.			Document No.	
KWC-3245 SAR REPORT			Issue No:	Date July 2002
FCC ID OVFKWC-3245			Page Number 17	

B. The rest of SAR distributions is substantially similar or equivalent to the plots submitted regardless of used channel.

8.1 Head SAR Test Results

The Appendix B includes the SAR distribution plots for all data in bold blue color in the following tables.

Left Head SAR

Mode	Channel # / Frequency (MHz)	Conducted Power (dBm)	SAR, Average over 1g (mW/g)			
			Cheek Position		Tilted Position	
			Antenna Retracted	Antenna Extended	Antenna Retracted	Antenna Extended
FM 835	991/824.04	25.45	0.685	1.02	0.536	1.27
	383/836.49	25.56	0.974	0.854	0.804	1.01
	799/848.97	25.56	0.992	0.855	0.691	1.06
Cellular CDMA 835	1013/824.70	24.53	0.610	0.891	0.468	1.04
	383/836.49	24.53	1.02	0.668	0.729	0.802
	777/848.31	24.53	0.855	0.650	0.636	0.858
PCS CDMA 1900	25/1851.25	22.15	0.930	0.816	0.931	0.812
	600/1880	21.97	1.11	0.933	1.03	0.927
	1175/1908.75	22.14	0.944	0.801	0.912	0.791

Right Head SAR

Mode	Channel # / Frequency (MHz)	Conducted Power (dBm)	SAR, Average over 1g (mW/g)			
			Cheek Position		Tilted Position	
			Antenna Retracted	Antenna Extended	Antenna Retracted	Antenna Extended
FM 835	991/824.04	25.45	0.538	0.893	0.451	1.14
	383/836.49	25.56	0.972	0.698	0.775	0.835
	799/848.97	25.56	0.780	0.694	0.558	0.879
Cellular CDMA 835	1013/824.70	24.53	0.423	0.705	0.388	0.941
	383/836.49	24.53	0.776	0.544	0.634	0.659
	777/848.31	24.53	0.679	0.560	0.508	0.693
PCS CDMA 1900	25/1851.25	22.15	1.03	0.936	0.925	0.850
	600/1880	21.97	1.19	1.02	1.04	0.925
	1175/1908.75	22.14	1.10	0.966	0.953	0.855

The highest measured SAR (at head) in the cellular band is 1.27mW/g. The highest measured SAR (at head) in PCS band is 1.19mW/g.

Company Kyocera Wireless Corp.		Document No.	
KWC-3245 SAR REPORT		Issue No:	Date July 2002
FCC ID OVFKWC-3245		Page Number 18	

8.2 Body Worn SAR Test Result

The Appendix B includes the SAR distribution plots for all data in bold blue color in the following tables.

Waist Level SAR with KWC Body Worn Accessories

Mode	Channel # / Frequency (MHz)	Conducted Power Before Test (dBm)	SAR, Average over 1g (mW/g)	
			Antenna Retracted	Antenna Extended
FM 835	991/824.04	25.45	0.266	0.417
	383/836.49	25.56	0.441	0.281
	799/848.97	25.56	0.387	0.314
Cellular CDMA 835	1013/824.70	24.53	0.220	0.325
	383/836.49	24.53	0.385	0.234
	777/848.31	24.53	0.301	0.210
PCS CDMA 1900	25/1851.25	22.15	0.222	0.204
	600/1880	21.97	0.212	0.192
	1175/1908.75	22.14	0.175	0.154

Waist Level SAR with 22.5mm Air Separation

Mode	Channel # / Frequency (MHz)	Conducted Power Before Test (dBm)	SAR, Average over 1g (mW/g)	
			Antenna Retracted	Antenna Extended
FM 835	991/824.04	25.45	0.203	0.394
	383/836.49	25.56	0.380	0.247
	799/848.97	25.56	0.352	0.271
Cellular CDMA 835	1013/824.70	24.53	0.142	0.257
	383/836.49	24.53	0.265	0.159
	777/848.31	24.53	0.252	0.190
PCS CDMA 1900	25/1851.25	22.15	0.204	0.180
	600/1880	21.97	0.212	0.178
	1175/1908.75	22.14	0.240	0.186

With KWC body worn accessories, the highest measured SAR in the cellular band is 0.441mW/g, in PCS band is 0.222 mW/g.

Company	Kyocera Wireless Corp.		Document No.
KWC-3245 SAR REPORT	Issue No:	Date	July 2002
FCC ID OVFKWC-3245	Page Number 19		

9 TEST SYSTEM PHOTOS

DASY 3 System



Company	Kyocera Wireless Corp.		Document No.
KWC-3245 SAR REPORT		Issue No:	Date July 2002
FCC ID OVFKWC-3245	Page Number		20

SAM Phantom



Company Kyocera Wireless Corp.	Document No.	
KWC-3245 SAR REPORT	Issue No:	Date July 2002
FCC ID OVFKWC-3245	Page Number 21	

APPENDIX A: VALIDATION TEST PRINTOUT

Validation 1900MHz, Head, 07-02-02, Target Value = 0.456 mW/g

Dipole 1900 MHz

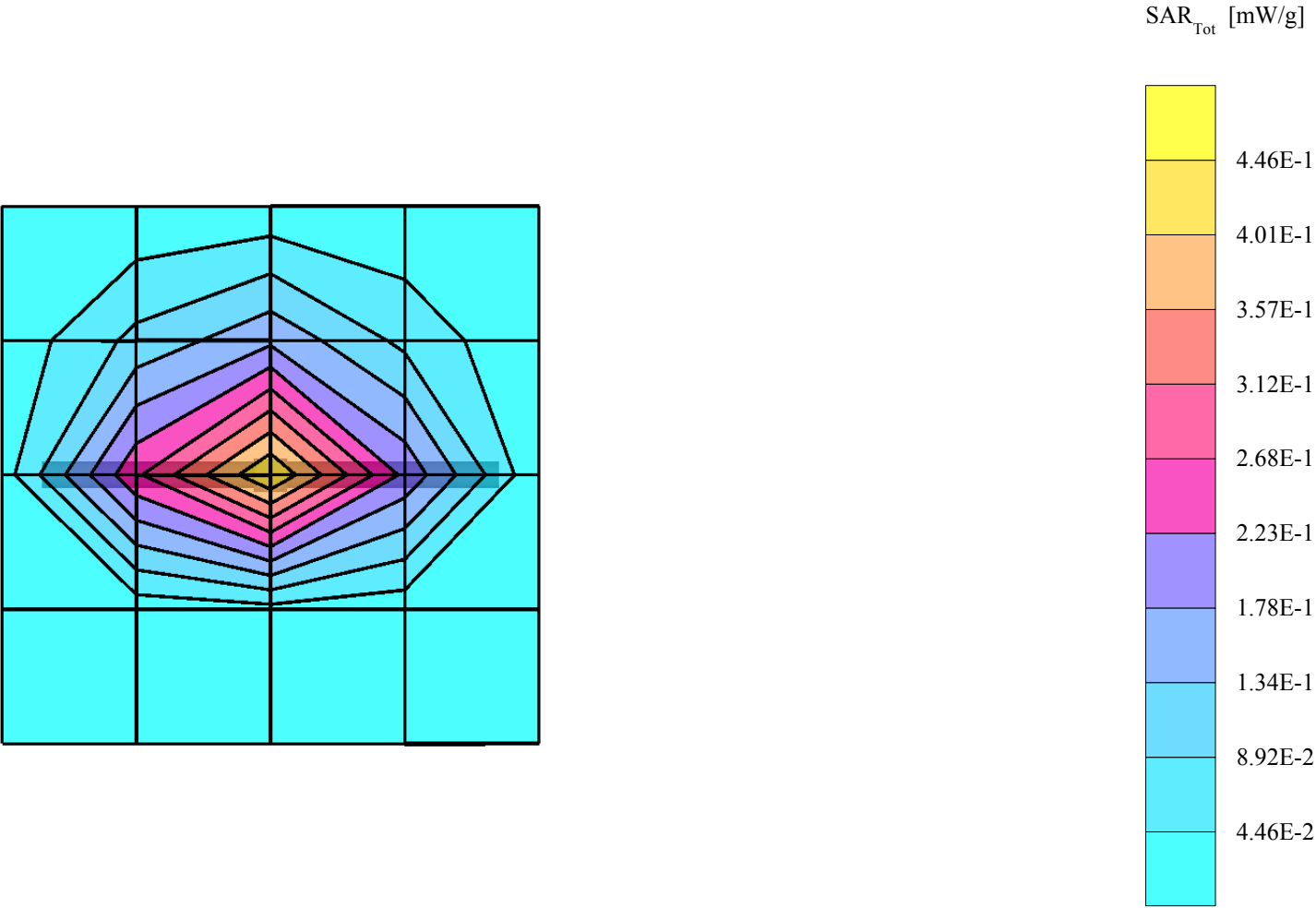
SAM Phantom; Flat Section; Position: (90°,90°); Frequency: 1900 MHz

Probe: ET3DV6 - SN1663; ConvF(5.30,5.30,5.30); Crest factor: 1.0; Head 1900 MHz: $\sigma = 1.43 \text{ mho/m}$ $\epsilon_r = 40.3$ $\rho = 1.00 \text{ g/cm}^3$

Cubes (2): SAR (1g): 0.448 mW/g $\pm 0.04 \text{ dB}$, SAR (10g): 0.231 mW/g $\pm 0.01 \text{ dB}$, (Worst-case extrapolation)

Coarse: Dx = 20.0, Dy = 20.0, Dz = 10.0

Powerdrift: -0.01 dB



Validation 835MHz, Head, 07-03-02, Target Value = 0.104 mW/g

Dipole 835 MHz

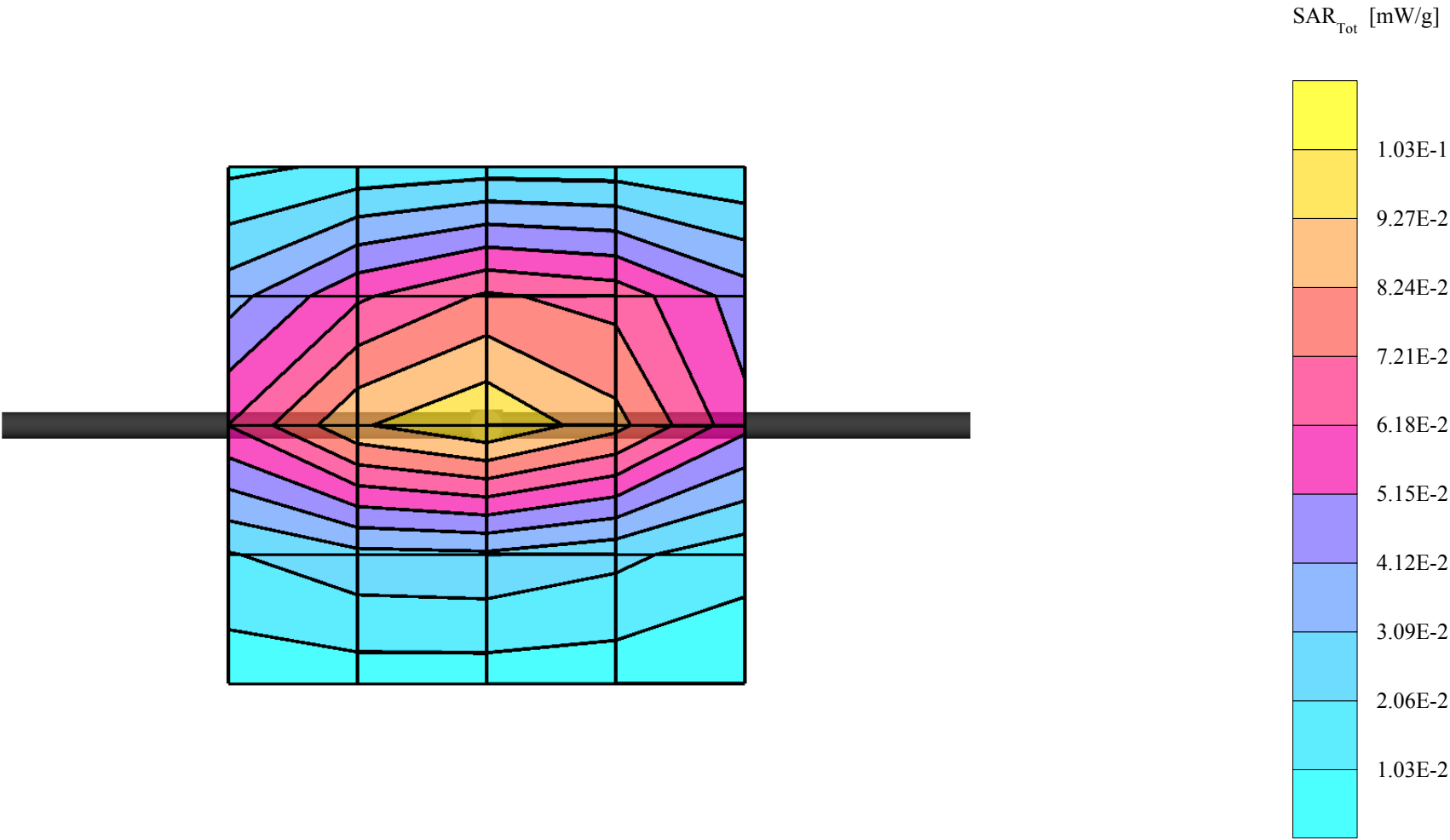
SAM Phantom; Flat Section; Position: (90°,90°); Frequency: 835 MHz

Probe: ET3DV6 - SN1663; ConvF(6.70,6.70,6.70); Crest factor: 1.0; Head 835 MHz: $\sigma = 0.90$ mho/m $\epsilon_r = 41.5$ $\rho = 1.00$ g/cm³

Cubes (2): SAR (1g): 0.103 mW/g \pm 0.03 dB, SAR (10g): 0.0654 mW/g \pm 0.02 dB, (Worst-case extrapolation)

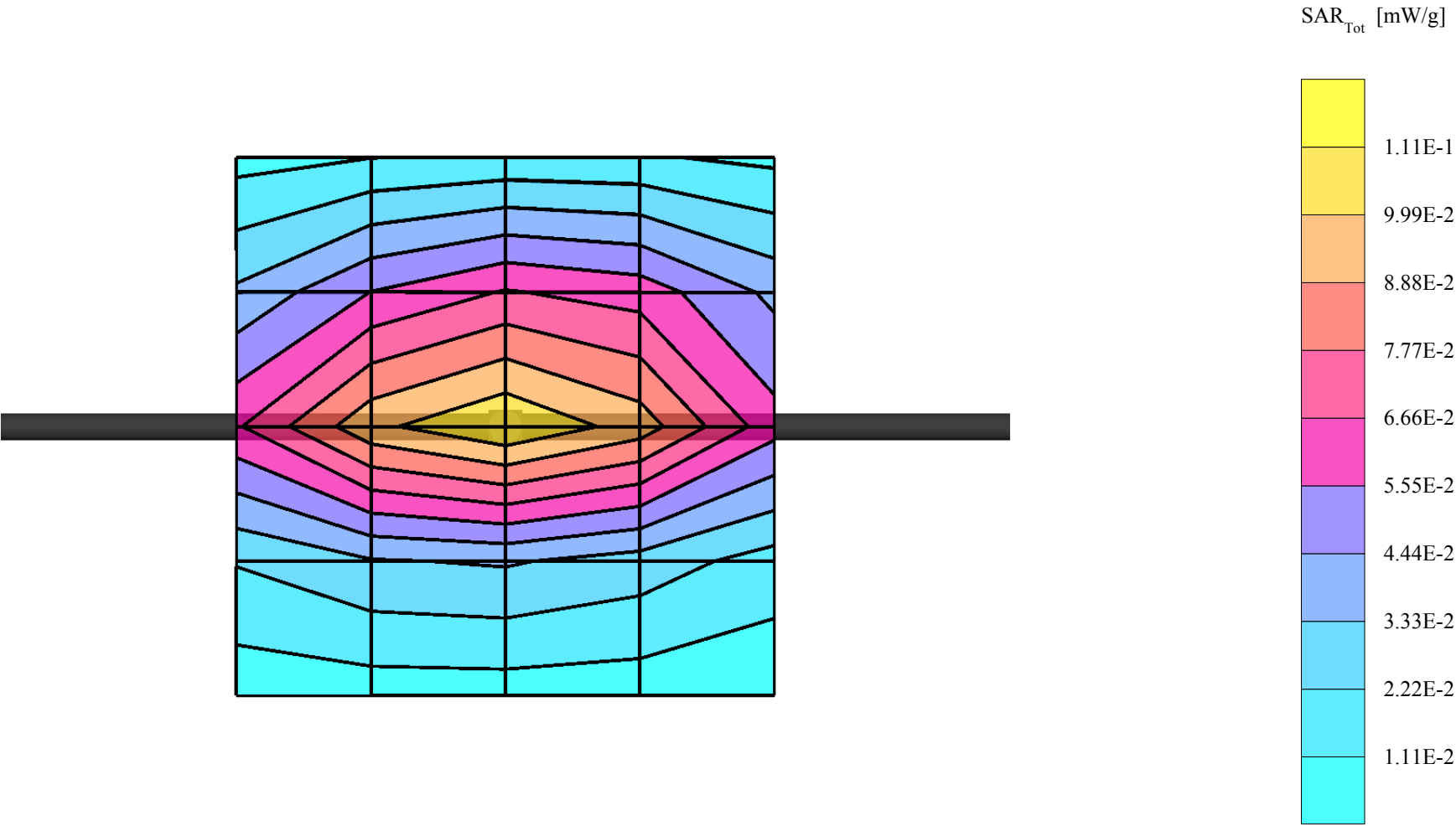
Coarse: Dx = 20.0, Dy = 20.0, Dz = 10.0

Powerdrift: -0.04 dB



Validation 835MHz, Head, 07-05-02, Target Value = 0.104 mW/g

Dipole 835 MHz
SAM Phantom; Flat Section; Position: (90°,90°); Frequency: 835 MHz
Probe: ET3DV6 - SN1663; ConvF(6.70,6.70,6.70); Crest factor: 1.0; Head 835 MHz: $\sigma = 0.90$ mho/m $\epsilon_r = 41.4$ $\rho = 1.00$ g/cm³
Cubes (2): SAR (1g): 0.104 mW/g \pm 0.02 dB, SAR (10g): 0.0666 mW/g \pm 0.02 dB, (Worst-case extrapolation)
Coarse: Dx = 20.0, Dy = 20.0, Dz = 10.0
Powerdrift: -0.08 dB



Validation 835MHz, Head, 07-08-02, Target Value = 0.104 mW/g

Dipole 835 MHz

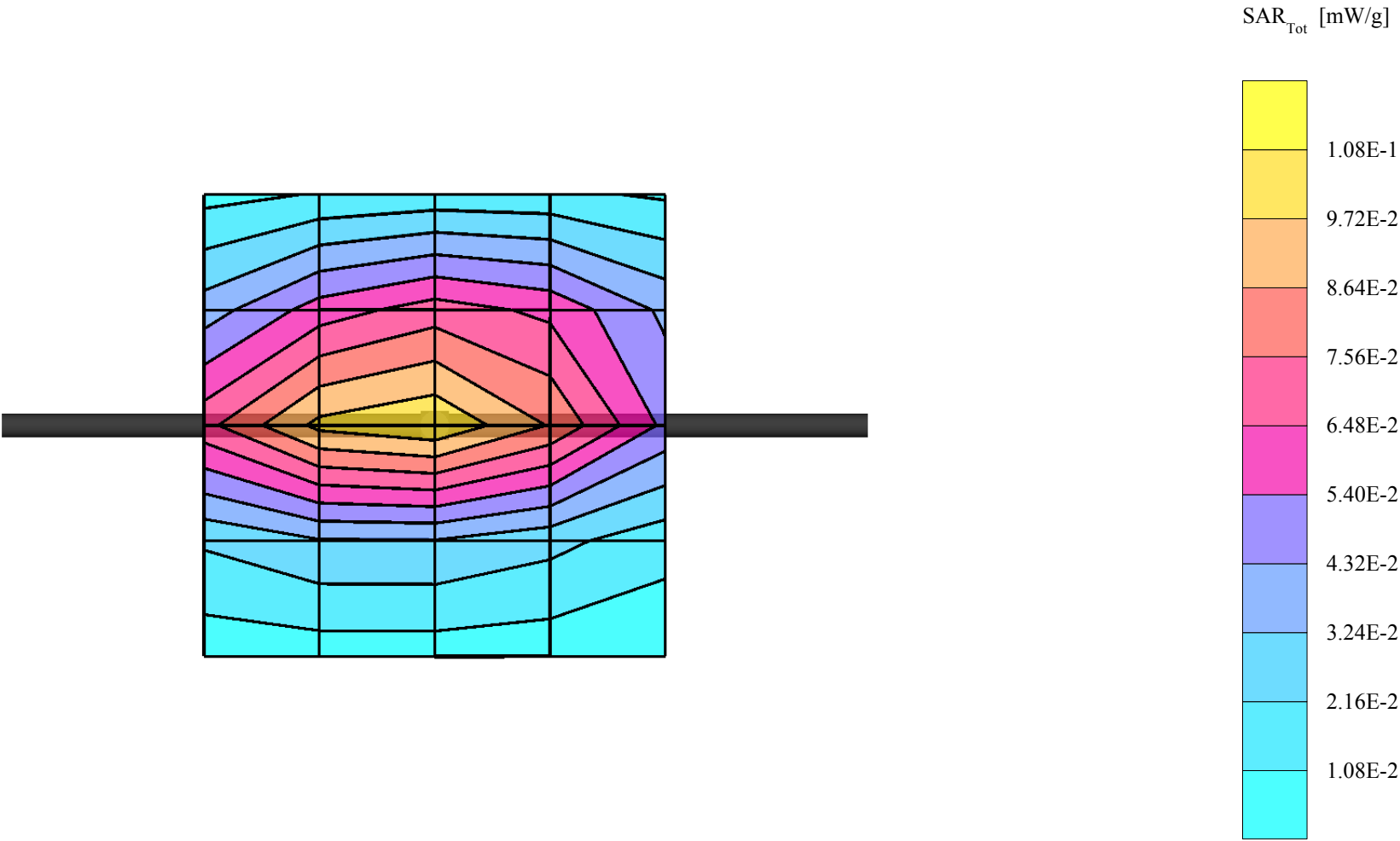
SAM Phantom; Flat Section; Position: (90°,90°); Frequency: 835 MHz

Probe: ET3DV6 - SN1663; ConvF(6.70,6.70,6.70); Crest factor: 1.0; Head 835 MHz: $\sigma = 0.89$ mho/m $\epsilon_r = 41.6$ $\rho = 1.00$ g/cm³

Cubes (2): SAR (1g): 0.104 mW/g \pm 0.00 dB, SAR (10g): 0.0666 mW/g \pm 0.00 dB, (Worst-case extrapolation)

Coarse: Dx = 20.0, Dy = 20.0, Dz = 10.0

Powerdrift: -0.01 dB



Schmid & Partner Engineering AG

Zeughausstrasse 43, 8004 Zurich, Switzerland, Phone +41 1 245 97 00, Fax +41 1 245 97 79

Calibration Certificate

835 MHz System Validation Dipole

Type:

D835V2

Serial Number:

453

Place of Calibration:

Zurich

Date of Calibration:

February 11, 2002

Calibration Interval:

24 months

asset #
039931

Schmid & Partner Engineering AG hereby certifies, that this device has been calibrated on the date indicated above. The calibration was performed in accordance with specifications and procedures of Schmid & Partner Engineering AG.

Wherever applicable, the standards used in the calibration process are traceable to international standards. In all other cases the standards of the Laboratory for EMF and Microwave Electronics at the Swiss Federal Institute of Technology (ETH) in Zurich, Switzerland have been applied.

Calibrated by:

Mary Kaya

Approved by:

[Signature]

DASY

Dipole Validation Kit

Type: D835V2

Serial: 453

Manufactured: January 31, 2002
Calibrated: February 11, 2002

1. Measurement Conditions

The measurements were performed in the flat section of the SAM twin phantom filled with head simulating solution of the following electrical parameters at 835 MHz:

Relative Dielectricity	41.9	$\pm 5\%$
Conductivity	0.89 mho/m	$\pm 5\%$

The DASY3 System (Software version 3.1c) with a dosimetric E-field probe ET3DV6 (SN:1507, Conversion factor 6.5 at 900 MHz) was used for the measurements.

The dipole was mounted on the small tripod so that the dipole feedpoint was positioned below the center marking of the flat phantom section and the dipole was oriented parallel to the body axis (the long side of the phantom). The standard measuring distance was 15mm from dipole center to the solution surface. The included distance holder was used during measurements for accurate distance positioning.

The coarse grid with a grid spacing of 20mm was aligned with the dipole. The 5x5x7 fine cube was chosen for cube integration. Probe isotropy errors were cancelled by measuring the SAR with normal and 90° turned probe orientations and averaging.

The dipole input power (forward power) was 250mW $\pm 3\%$. The results are normalized to 1W input power.

2. SAR Measurement

Standard SAR-measurements were performed with the phantom according to the measurement conditions described in section 1. The results have been normalized to a dipole input power of 1W (forward power). The resulting averaged SAR-values are:

averaged over 1 cm ³ (1 g) of tissue:	10.4 mW/g
averaged over 10 cm ³ (10 g) of tissue:	6.64 mW/g

Note: If the liquid parameters for validation are slightly different from the ones used for initial calibration, the SAR-values will be different as well.

3. Dipole Impedance and Return Loss

The impedance was measured at the SMA-connector with a network analyzer and numerically transformed to the dipole feedpoint. The transformation parameters from the SMA-connector to the dipole feedpoint are:

Electrical delay:	1.375 ns	(one direction)
Transmission factor:	0.987	(voltage transmission, one direction)

The dipole was positioned at the flat phantom sections according to section 1 and the distance holder was in place during impedance measurements.

Feedpoint impedance at 835 MHz:	$\text{Re}\{Z\} = $ 49.4 Ω
---------------------------------	---

	$\text{Im}\{Z\} = $ -3.8 Ω
--	---

Return Loss at 835 MHz	-28.4 dB
------------------------	-----------------

4. Handling

Do not apply excessive force to the dipole arms, because they might bend. Bending of the dipole arms stresses the soldered connections near the feedpoint leading to a damage of the dipole.

5. Design

The dipole is made of standard semirigid coaxial cable. The center conductor of the feeding line is directly connected to the second arm of the dipole. The antenna is therefore short-circuited for DC-signals.

6. Power Test

After long term use with 100W radiated power, only a slight warming of the dipole near the feedpoint can be measured.

Validation Dipole D835V2 SN:453, d = 15 mm

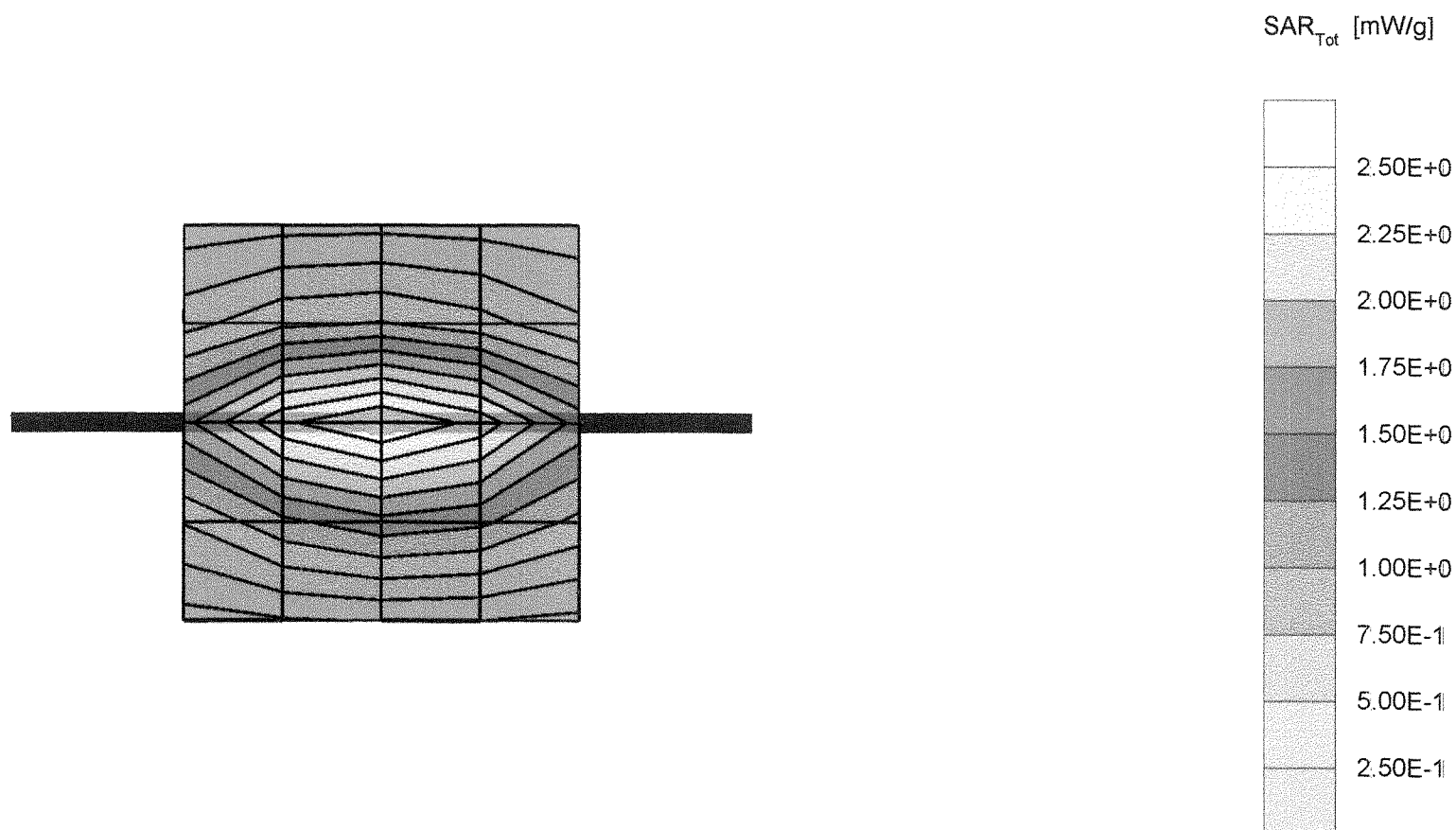
Frequency: 835 MHz; Antenna Input Power: 250 [mW]

Phantom: M Phantom; Flat Section; Grid Spacing: Dx = 20.0, Dy = 20.0, Dz = 10.0

Probe: ET3DV6 - SN1507; ConvF(6.50,6.50,6.50) at 900 MHz; IEEE1528 835 MHz; $\sigma = 0.89$ mho/m $\epsilon_r = 41.9$ $\rho = 1.00$ g/cm³Results (2): Peak: 4.16 mW/g ± 0.00 dB, SAR (1g): 2.60 mW/g ± 0.01 dB, SAR (10g): 1.66 mW/g ± 0.02 dB, (Worst-case extrapolation)

Penetration depth: 12.0 (10.6, 13.8) [mm]

Frequency drift: -0.00 dB



5 Feb 2002 17:15:07

CH1 S11 1 U FS

1: 49.424 \angle -3.8203 \angle 49.892 pF

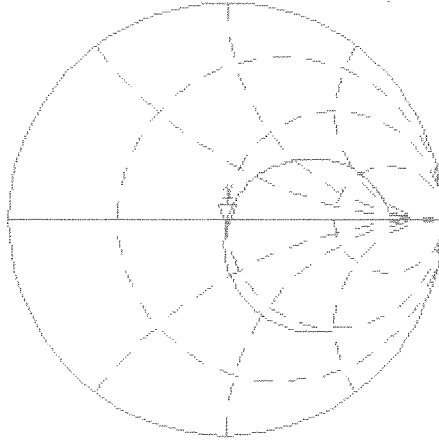
835.000 000 MHz

Del

Cor

Avg
15

↑

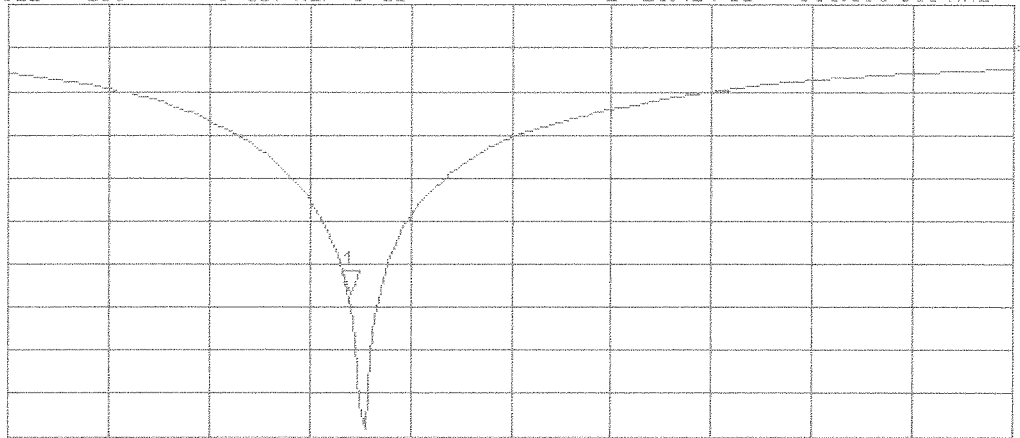


CH2 S11 LOG 5 dB/REF 0 dB

1: -28.414 dB 835.000 000 MHz

Cor

↑



START 700.000 000 MHz

STOP 1 100.000 000 MHz

Schmid & Partner Engineering AG

Zeughausstrasse 43, 8004 Zurich, Switzerland, Phone +41 1 245 97 00, Fax +41 1 245 97 79

Calibration Certificate

1900 MHz System Validation Dipole

Type:

D1900V2

Serial Number:

5d005

Place of Calibration:

Zurich

Date of Calibration:

February 20, 2002

959e11#
039930

Calibration Interval:

24 months

Schmid & Partner Engineering AG hereby certifies, that this device has been calibrated on the date indicated above. The calibration was performed in accordance with specifications and procedures of Schmid & Partner Engineering AG.

Wherever applicable, the standards used in the calibration process are traceable to international standards. In all other cases the standards of the Laboratory for EMF and Microwave Electronics at the Swiss Federal Institute of Technology (ETH) in Zurich, Switzerland have been applied.

Calibrated by:

Vitali Nico

Approved by:

Walter Kitz

DASY3

Dipole Validation Kit

Type: D1900V2

Serial: 5d005

Manufactured: February 14, 2002

Calibrated: February 20, 2002

1. Measurement Conditions

The measurements were performed in the flat section of the new generic twin phantom filled with brain simulating sugar solution of the following electrical parameters at 1900 MHz:

Relative permittivity	39.1	$\pm 5\%$
Conductivity	1.47 mho/m	$\pm 10\%$

The DASY3 System (Software version 3.1d) with a dosimetric E-field probe ET3DV6 (SN:1507, conversion factor 5.3) was used for the measurements.

The dipole feedpoint was positioned below the center marking and oriented parallel to the body axis (the long side of the phantom). The standard measuring distance was 10mm from dipole center to the solution surface. The included distance holder was used during measurements for accurate distance positioning.

The coarse grid with a grid spacing of 20mm was aligned with the dipole. The 5x5x7 fine cube was chosen for cube integration. Probe isotropy errors were cancelled by measuring the SAR with normal and 90° turned probe orientations and averaging.

The dipole input power (forward power) was 250mW $\pm 3\%$. The results are normalized to 1W input power.

2. SAR Measurement

Standard SAR-measurements were performed with the head phantom according to the measurement conditions described in section 1. The results (see figure) have been normalized to a dipole input power of 1W (forward power). The resulting averaged SAR-values are:

averaged over 1 cm³ (1 g) of tissue: **45.6 mW/g**

averaged over 10 cm³ (10 g) of tissue: **23.1 mW/g**

Note: If the liquid parameters for validation are slightly different from the ones used for initial calibration, the SAR-values will be different as well. The estimated sensitivities of SAR-values and penetration depths to the liquid parameters are listed in the DASY Application Note 4: 'SAR Sensitivities'.

3. Dipole Impedance and Return Loss

The impedance was measured at the SMA-connector with a network analyzer and numerically transformed to the dipole feedpoint. The transformation parameters from the SMA-connector to the dipole feedpoint are:

Electrical delay:	1.182 ns	(one direction)
Transmission factor:	0.996	(voltage transmission, one direction)

The dipole was positioned at the flat phantom sections according to section 1 and the distance holder was in place during impedance measurements.

Feedpoint impedance at 1900 MHz:	$\text{Re}\{Z\} = $ 50.9 Ω
----------------------------------	---

	$\text{Im}\{Z\} = $ 2.4 Ω
--	--

Return Loss at 1900 MHz	- 32.0 dB
-------------------------	------------------

4. Handling

Do not apply excessive force to the dipole arms, because they might bend. Bending of the dipole arms stresses the soldered connections near the feedpoint leading to a damage of the dipole.

Small end caps have been added to the dipole arms in order to improve matching when loaded according to the position as explained in Section 1. The SAR data are not affected by this change. The overall dipole length is still according to the Standard.

5. Design

The dipole is made of standard semirigid coaxial cable. The center conductor of the feeding line is directly connected to the second arm of the dipole. The antenna is therefore short-circuited for DC-signals.

6. Power Test

After long term use with 40W radiated power, only a slight warming of the dipole near the feedpoint can be measured.

Validation Dipole D1900V2 SN:5d005, d = 10 mm

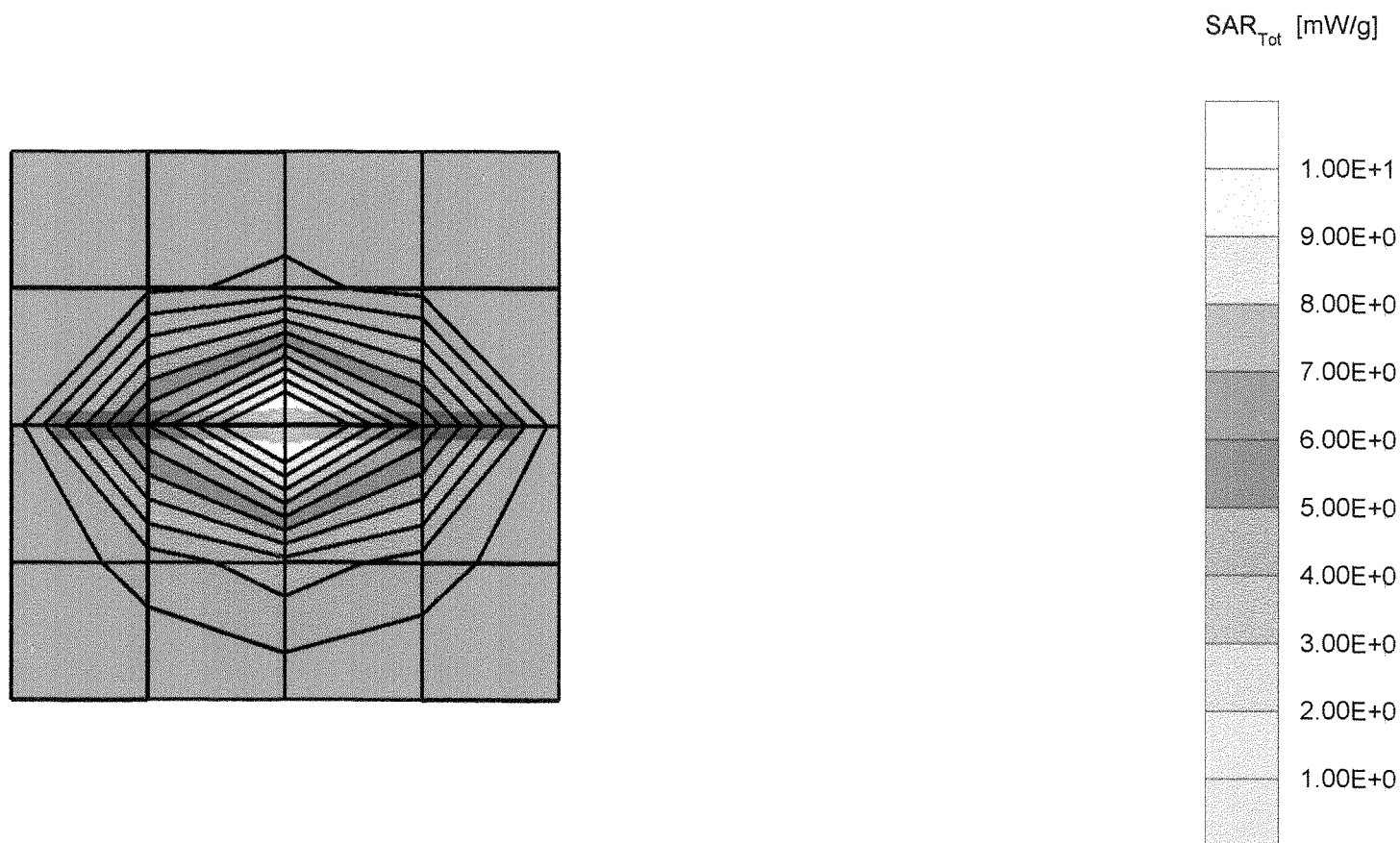
Frequency: 1900 MHz; Antenna Input Power: 250 [mW]

Model: IIR Phantom; Flat Section; Grid Spacing: Dx = 20.0, Dy = 20.0, Dz = 10.0

Subject: ET3DV6 - SN1507; ConvF(5.30,5.30,5.30) at 1800 MHz; IEEE1528 1900 MHz; $\sigma = 1.47$ mho/m $\epsilon_r = 39.1$ $\rho = 1.00$ g/cm³Results (2): Peak: 21.9 mW/g ± 0.03 dB, SAR (1g): 11.4 mW/g ± 0.03 dB, SAR (10g): 5.78 mW/g ± 0.02 dB, (Worst-case extrapolation)

Penetration depth: 7.8 (7.4, 8.7) [mm]

Frequency drift: -0.02 dB



20 Feb 2002 17:43:08

CHI S11 1 U FS

1: 50.867 Ω 2.3691 Ω 198.45 μH

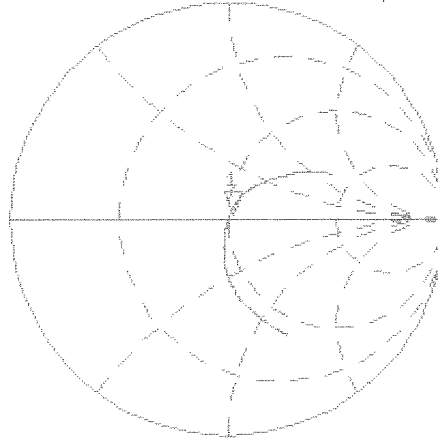
1 900.000 000 MHz

Del

Cor

Avg
16

↑

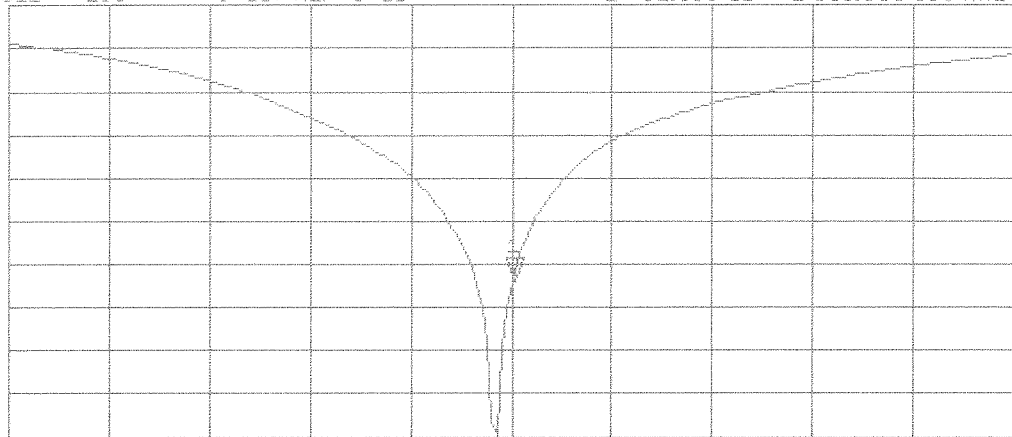


CH2 S11 LOG 5 dB/REF 0 dB 1:-32.035 dB 1 900.000 000 MHz

Cor

Avg
16

↑



START 1 600.000 000 MHz

STOP 2 200.000 000 MHz