

Go to www.vtechphones.com to register your product for enhanced warranty support and the latest VTech product news.



vttech®

Quick start guide



The *Heart Beat* sound file was created by Zarabadeu, and is used under the Creative Commons license. The *Chickens At Night* sound file was created by Mike Koenig, and is used under the Creative Commons license. The *Stream Noise* sound file was created by Caroline Ford, and is used under the Creative Commons license. The *Background Noise* sound file was created by Caroline Ford, and is used under the Creative Commons license.

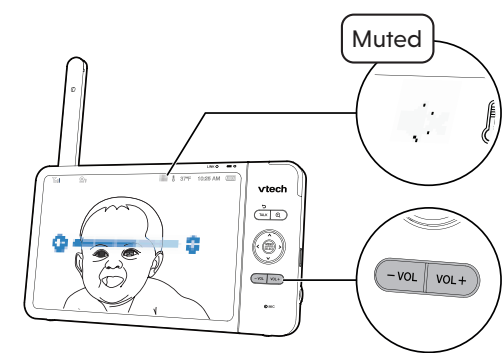
Power requirements	
Parent unit: 3.7V 5000mAh, 18.5Wh Lithium-ion battery	Parent unit power adapter: Output: 5V DC @ 2A
Nominal effective range	
Maximum power allowed by FCC and IC. Actual operating range may vary according to environmental conditions at the time of use.	
LCD	7" Color LCD (IPS 1200x800 pixels)
Channels	24
Transmit frequency	Baby unit: 2400-2475MHz
Frequency control	Crystal controlled PLL synthesizer

TECHNICAL SPECIFICATIONS

BASIC OPERATION - PARENT UNIT

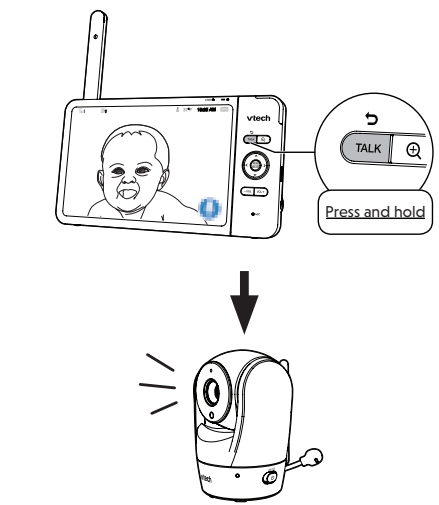
Adjust speaker volume

Press **-VOL / VOL+** to adjust your parent unit speaker volume. It determines the volume of sound transmitted from your baby unit.



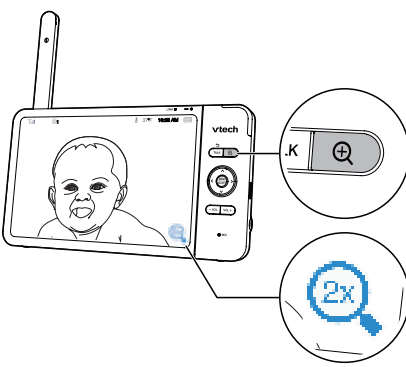
Talk to your baby via the baby unit

- Press and hold the **TALK** key.
- When the **TALK** icon displays on screen, speak to your parent unit. Your voice is transmitted to the baby unit.
- When finish talking, release the **TALK** key and hear your baby again.



Zoom

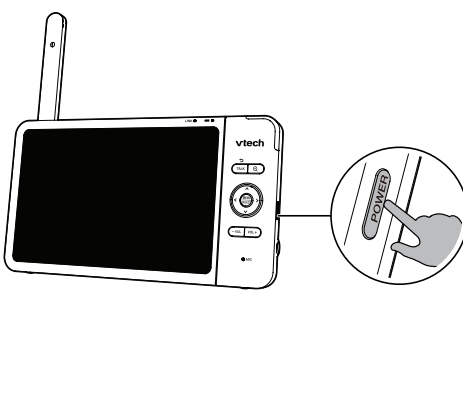
Press **Q** to zoom in or out.



Turn on/off the parent unit screen

You can turn on or off the parent unit screen without powering off the parent unit. You can still hear sound from the baby unit.

- Press **POWER** on the parent unit to turn off the screen.
- Press any keys on the parent unit to turn on the screen again.



IMPORTANT SAFETY INSTRUCTIONS

The applied nameplate is located at the bottom of the baby unit's base.

When using your equipment, basic safety precautions should always be followed to reduce the risk of fire, electric shock and injury, including the following:

- Follow all warnings and instructions marked on the product.
- Adult setup is required.
- CAUTION:** Do not install the baby unit at a height above 2 meters.
- This product is intended as an aid. It is not a substitute for responsible and proper adult supervision and should not be used as such.
- This product is not intended for use as a medical monitor.
- Do not use this product near water. For example, do not use it next to a bath tub, wash bowl, kitchen sink, laundry tub or swimming pool, or in a wet basement or shower.
- CAUTION:** Use only the battery provided. There may be a risk of explosion if a wrong type of battery is used for the parent unit. The battery cannot be subjected to high or low extreme temperature and low air pressure at high altitude during use, storage or transportation. Disposal of battery into fire or a hot oven, or mechanically crushing or cutting or the battery can result in an explosion. Leaving the battery in an extremely high temperature surrounding environment can result in an explosion or the leakage of flammable liquid or gas. Battery subjected to extremely low air pressure may result in an explosion or the leakage of flammable liquid or gas. Dispose of used battery according to the information in **The RRC seal**.
- Use only the adapters included with this product. Incorrect adapter polarity or voltage can seriously damage the product.



Power adapter information:

Baby Unit Output: 5V DC 1A
VTech Telecommunications Ltd.
Model: VT05EU05100
Parent Unit Output: 5V DC 2A
VTech Telecommunications Ltd.
Model: VT07EU05200



Rechargeable battery information:

3.7V 5000mAh, 18.5Wh Lithium-ion Battery
Zhuhai Great Power Energy Co., Ltd.
Model: GSP806090-5Ah-3.7V-1S1P

- The power adapter is intended to be correctly oriented in a vertical or floor mount position. The prongs are not designed to hold the plug in place if it is plugged into a ceiling, under-the-table or cabinet outlet.
- For pluggable equipment, the socket-outlet (power adapter) shall be installed near the equipment and shall be easily accessible.
- Unplug this product from the wall outlet before cleaning. Do not use liquid or aerosol cleaners. Use a damp cloth for cleaning.
- Do not cut off the power adapters to replace them with other plugs, as this causes a hazardous situation.
- Do not allow anything to rest on the power cords. Do not install this product where the cords may be walked on or crimped.
- This product should be operated only from the type of power source indicated on the marking label. If you are not sure of the type of power supply in your home, consult your dealer or local power company.
- The equipment is to be supplied from an identified USB port complying with the requirements of Limited Power Source.
- Do not overload wall outlets or use an extension cord.
- Do not place this product on an unstable table, shelf, stand or other unstable surfaces.
- This product should not be placed in any area where proper ventilation is not provided. Slots and openings in the back or bottom of this product are provided for ventilation. To protect them from overheating, these openings must not be blocked by placing the product on a soft surface such as a bed, sofa or rug. This product should never be placed near or over a

radiator or heat register.

- Never push objects of any kind into this product through the slots because they may touch dangerous voltage points or create a short circuit. Never spill liquid of any kind on the product.
- To reduce the risk of electric shock, do not disassemble this product, but take it to an authorized service facility. Opening or removing parts of the product other than specified access doors may expose you to dangerous voltages or other risks. Incorrect reassembling can cause electric shock when the product is subsequently used.
- You should test the sound reception every time you turn on the units or move one of the components.
- Periodically examine all components for damage.
- There is a very low risk of privacy loss when using certain electronic devices, such as baby monitors, cordless telephones, etc. To protect your privacy, make sure the product has never been used before purchase, reset the baby monitor periodically by powering off and then powering on the units, and power off the baby monitor if you will not use it for some time.
- Children should be supervised to ensure that they do not play with the product.
- The small parts of this monitor can be swallowed by babies or small children. Keep these parts out of reach of children.
- The product is not intended for use by persons (including children) with reduced physical, sensory or mental capabilities, or lack of experience and knowledge, unless they have been given supervision or instruction concerning use of the appliance by a person responsible for their safety.

SAVE THESE INSTRUCTIONS

Cautions

- Use and store the product at a temperature between 32°F and 104°F.
- Burn hazard, fire hazard, explosion hazard associated with mishandling of the battery.
- Do not expose the product to extreme cold, heat or direct sunlight. Do not put the product close to a heating source.



Warning—Strangulation Hazard—Children have STRANGLED in cords. Keep this cord out of the reach of children (more than 3 ft (0.9m) away). Do not remove this tag.

- Never place the camera unit(s) inside the baby's crib or playpen. Never cover the camera unit(s) or parent unit with anything such as a towel or a blanket.
- Other electronic products may cause interference with your camera unit. Try installing your camera unit as far away from these electronic devices as possible: wireless routers, radios, cellular telephones, intercoms, room monitors, televisions, personal computers, kitchen appliances and cordless telephones.

Precautions for users of implanted cardiac pacemakers

Cardiac pacemakers (applies only to digital cordless devices): Wireless Technology Research, LLC (WTR), an independent research entity, led a multidisciplinary evaluation of the interference between portable wireless devices and implanted cardiac pacemakers. Supported by the U.S. Food and Drug Administration, WTR recommends to physicians that:

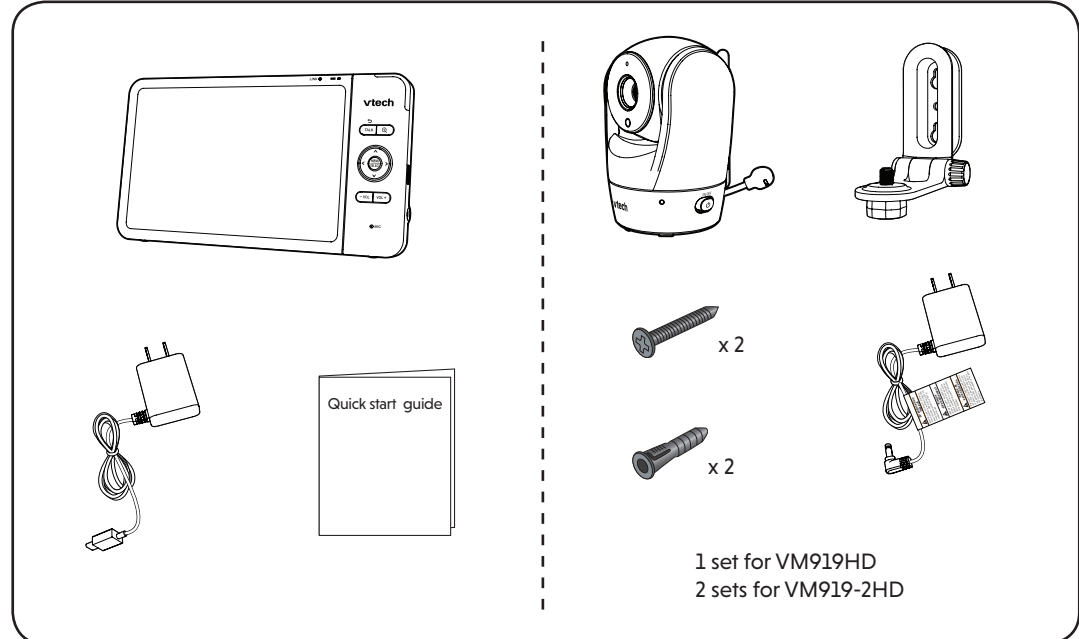
- Should keep wireless devices at least six inches from the pacemaker.
- Should NOT place wireless devices directly over the pacemaker, such as in a breast pocket, when it is turned ON.

WTR's evaluation did not identify any risk to bystanders with pacemakers from other persons using wireless devices.

Electromagnetic fields (EMF)

This VTech product complies with all standards regarding electromagnetic fields (EMF), if handled properly and according to the instructions in this user's manual, the product is safe to be used based on scientific evidence available today.

WHAT'S IN THE BOX



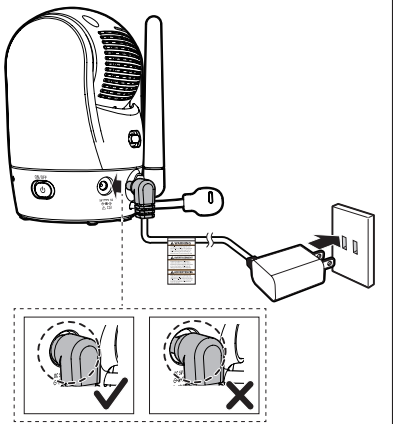
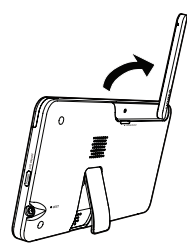
1 set for VM919HD
2 sets for VM919-2HD

1 CONNECT THE BABY MONITOR

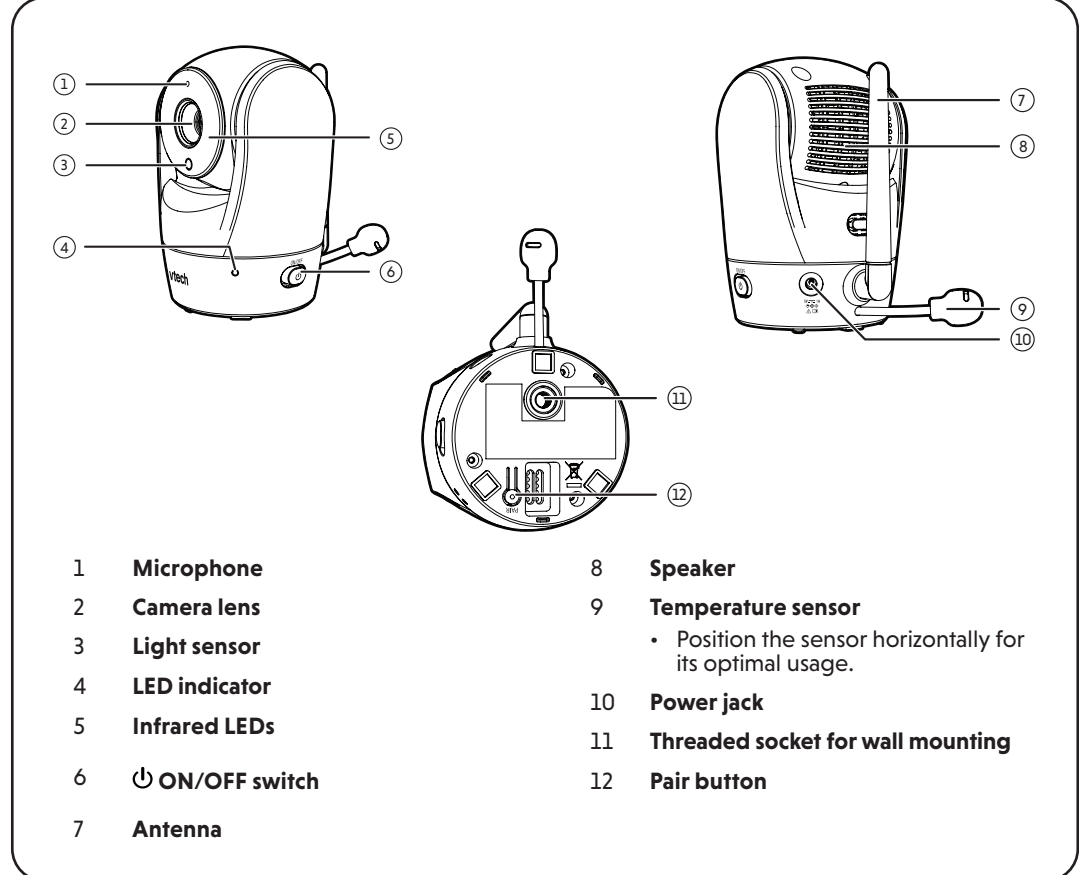
NOTES

- The rechargeable battery in the parent unit is built-in.
- Use only the power adapters supplied with this product.
- Make sure the parent unit and the baby unit are not connected to the switch controlled electric outlets.
- Connect the power adapters in a vertical or floor mount position only. The adapters' prongs are not designed to hold the weight of the parent unit and the baby unit, so do not connect them to any ceiling, under-the-table, or cabinet outlets. Otherwise, the adapters may not properly connect to the outlets.
- Make sure the parent unit, the baby unit and the power adapter cords are out of reach of children.
- To maintain compliance with the FCC's RF exposure guidelines, place the baby unit at least 20cm from nearby persons.

Raise the parent unit antenna for better reception



OVERVIEW - BABY UNIT



- | | |
|-----------------|---|
| 1 Microphone | 8 Speaker |
| 2 Camera lens | 9 Temperature sensor |
| 3 Light sensor | • Position the sensor horizontally for its optimal usage. |
| 4 LED indicator | 10 Power jack |
| 5 Infrared LEDs | 11 Threaded socket for wall mounting |
| 6 ON/OFF switch | 12 Pair button |
| 7 Antenna | |

NEED HELP?

For operations and guides to help you using your video monitor, and for latest information and supports, go and check the online help topics and online FAQs.

Use your smartphone or mobile device to access our online help.

- Go to <https://help.vtechphones.com/vm919hd> or <https://help.vtechphones.com/vm919-2hd>; OR
- Scan the QR code on the right. Launch the camera app or QR code scanner app on your smartphone or tablet. Hold the device's camera up to the QR code and frame it. Tap the notification to trigger the redirection of the online help.
- If the QR code is not clearly displayed, adjust your camera's focus by moving your device closer or further away until it is clear.

You can also call our Customer Support at 1 (800) 595-9511 [in US] or 1 (800) 267-7377 [in Canada] for help.



1 CONNECT THE BABY MONITOR (CONT'D)

Charge the parent unit battery before use

When you have connected and turned on the parent unit, the battery will be charged automatically.

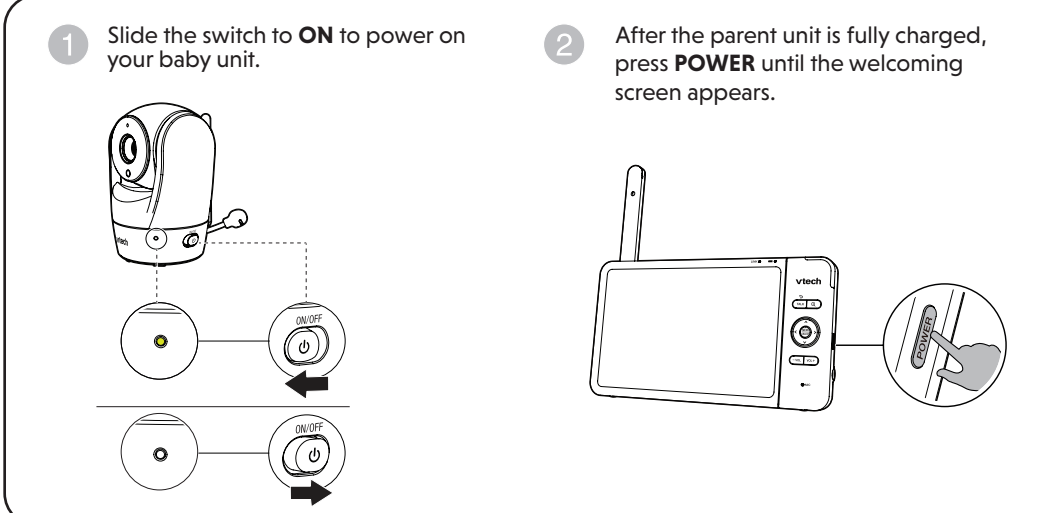
NOTES

- Before using the baby monitor for the first time, charge the parent unit battery for 12 hours. When the parent unit battery is fully charged, the battery icon becomes solid
- It takes longer to charge the battery when the parent unit is turned on. To shorten the charging time, turn the parent unit off while charging.
- The standby time varies depending on the sensitivity level you set, your actual use and the age of the battery.

The battery icon indicates the battery status (see the following table).

BATTERY INDICATORS	BATTERY STATUS	ACTION
The screen displays light flashes.	The battery has very little charge and may be used for only a short time.	Charge without interruption (about 30 minutes).
The battery icon becomes solid	The battery is fully charged.	To keep the battery charged, connect it to AC power when not in use.

2 POWER ON OR OFF THE BABY MONITOR



PARENT UNIT ICONS

Main menu icons

Main menu

Monitoring mode (For VM919-2HD only)

- Baby unit 1 in Single mode**
- Baby unit 2 in Single mode**
- Patrol mode**
- Split mode**

Melodies and soothing sounds

- Melodies and Soothing Sounds**
- Select play all melodies, or play one of the five melodies and four soothing sounds.

Timer

- Timer**
- You can also set the timer to stop playing after 15, 30 or 60 minutes, or playing non-stop.

Alerts - Sound, motion and temperature

- Sound**
- Select sound **Sensitivity** level.
- Turn on/off **Sound Detection Alert**.
- Turn on/off **Auto Wake Up** function. (See **Sound Detection and Auto Wake Up** section)
- Motion**
- Turn on/off **Motion Alert**.
- Select motion **Sensitivity** level. (See **Motion Detection** section)

Main menu

- Temperature**
- Turn on/off **Temperature Alert**. Set the parent unit to beep whenever the room temperature detected by the baby unit falls outside of the set temperature range.
- Select **Minimum** temperature for alert range.
- Select **Maximum** temperature for alert range.
- Select temperature **Format**. Set temperature display in Fahrenheit (°F) or Celsius (°C).

Parent unit settings

- Parent unit settings**
- Adjust parent unit screen **Brightness**.
- Turn on/off **Dim Mode**.

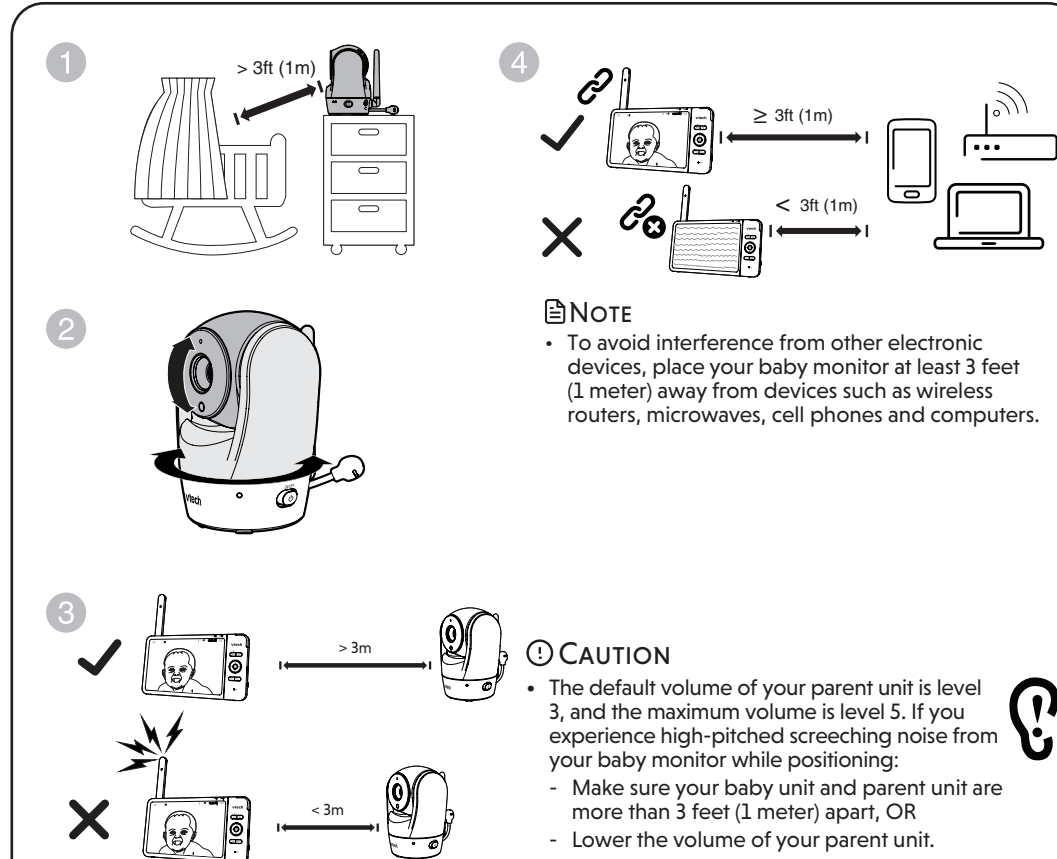
Baby unit settings

- Baby unit settings**
- Turn on/off baby unit's **Status LED**.
- Select **Field of View**. Choose Wide angle or Standard .
- Adjust baby unit's speaker **Volume**.

General settings

- General settings**
- Turn on/off **Low Battery Alert Tone**. Set the parent unit to beep when the battery is low.
- Turn on/off **No Link Alert Tone**. Set the parent unit to beep when the link between the parent unit and the baby unit is lost.

3 POSITIONING THE BABY MONITOR



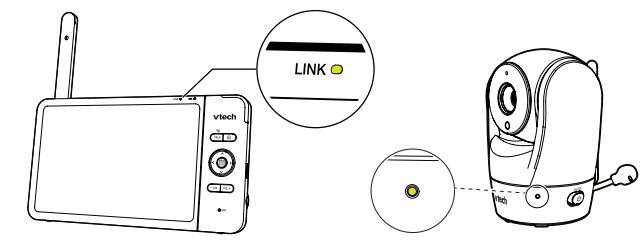
NOTE

- To avoid interference from other electronic devices, place your baby monitor at least 3 feet (1 meter) away from devices such as wireless routers, microwaves, cell phones and computers.

4 STATUS CHECK

Once you power on both your baby unit and parent unit, your parent unit displays image from the baby unit, and the **LINK** LED light turns on.

The green LED light of the baby unit turns on.



Status icons

- Current view status**
- The baby unit number that is being viewed when in:
 - Single CAM** mode.
 - Patrol** mode (* For **VM919-2HD** only).
 - Split** mode (* For **VM919-2HD** only).
- Split mode** (* For **VM919-2HD** only)
- Patrol mode** (* For **VM919-2HD** only)
- Night vision feature is activated automatically.
- Motion alert is turned on.
- Sound detection alert is turned on.
- Melodies or soothing sound are turned on.
- Parent unit speaker is muted.
- Temperature alert is turned on.

Alert icons

- Displays when parent unit's battery is low and needs charging.
- Displays when motion is detected at a baby unit.
- Displays when sound is detected at a baby unit.
- Baby unit detects temperature exceeds the set maximum.
- Baby unit detects temperature is lower than the set minimum.